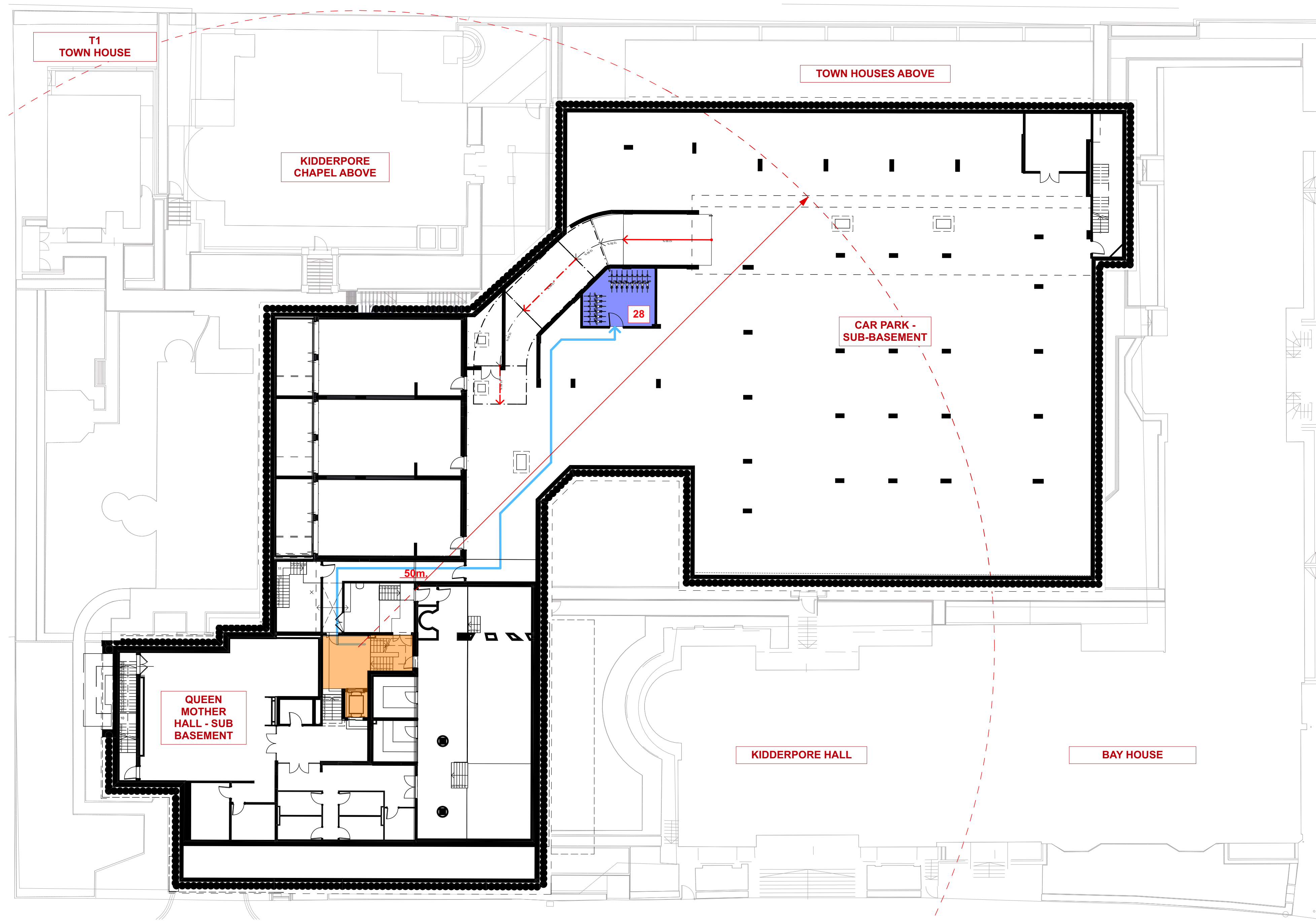


Basement Plan



Sub Basement Plan

0 2m 10m 20m
 DIMENSION AT ORIGINAL SHEET SIZE - A0
 Construction shall be in accordance with the British Standards and to be worked from. Discrepancies shall be reported to the Architect before proceeding. © The Drawing & Copyright

KEY PLAN

NOTE:
 ALL INFORMATION SHOWN ON THIS DRAWINGS IS SUBJECT TO DESIGN DEVELOPMENT

Key:

- ▲ Residential Entrance
- Routes to cycle storage
- Access to cycle storage in the basements
- Cycle storage locations
- Short stay visitor cycle storage
- 28 Cycle storage count per location

PLANNING

REVISION	DATE	DRN	CHKD
1	06/09/2017	MJR	HC
2	06/09/2017	MJR	HC

A&Q
 PARTNERSHIP

CLIENT
 MOUNT ANVIL LTD

PROJECT
 KIDDERPORE AVENUE

DRAWING
 General Notes
 Cycle Storage Strategy - Basement and Sub
 Basement Levels

SCALE 1:200 @ A0 DATE

DRAWING No. 15 230 DRAWN BY MRJ
 9000-DRG-20YY-VL004 REV PJ

A & Q PARTNERSHIP (LONDON) LTD
 THE LUX BUILDING, 3-4 HOXTON SQUARE, LONDON N1 6NU
 Tel: 020 7613 2244 Fax: 020 7613 2642 Email: london@a&q.co.uk
 ARCHITECTURE DESIGN MASTERPLANNING INTERIORS