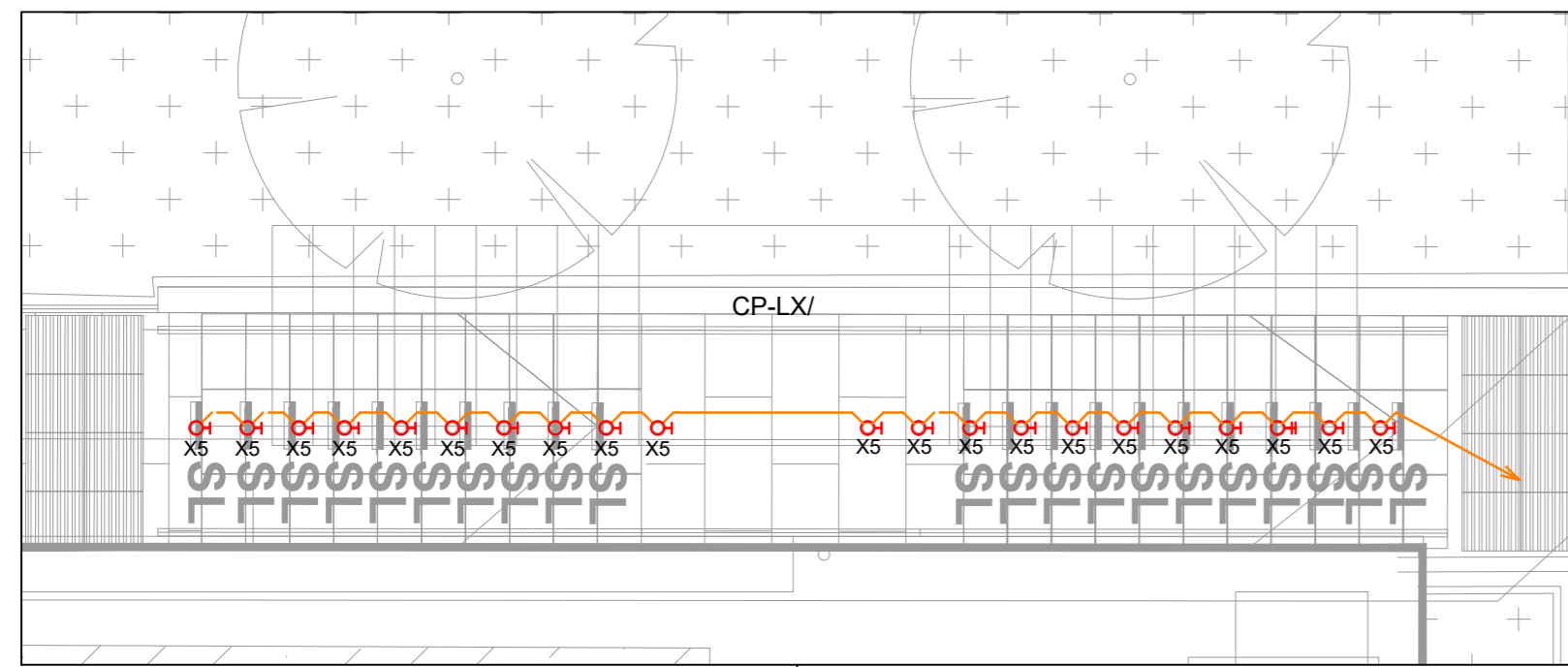
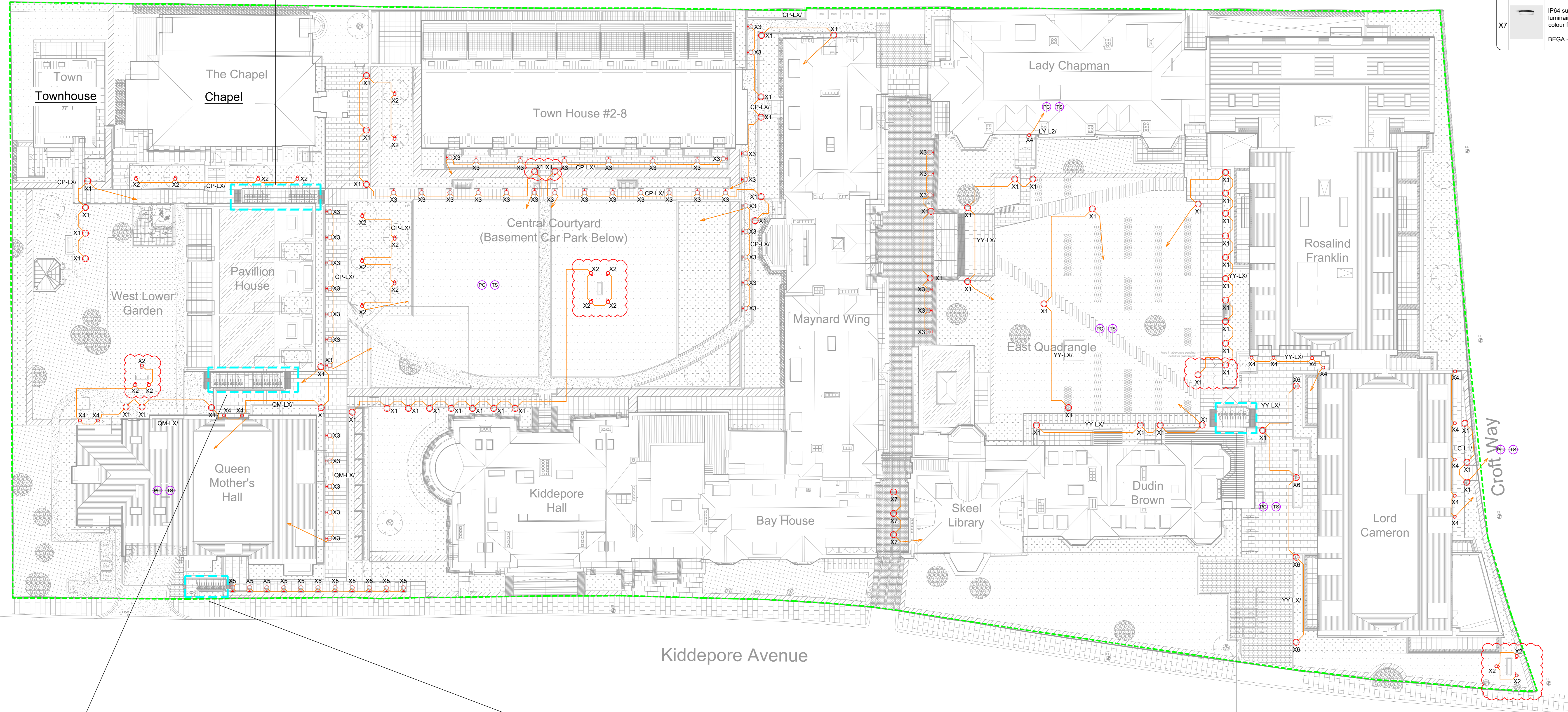


Scale 1:50



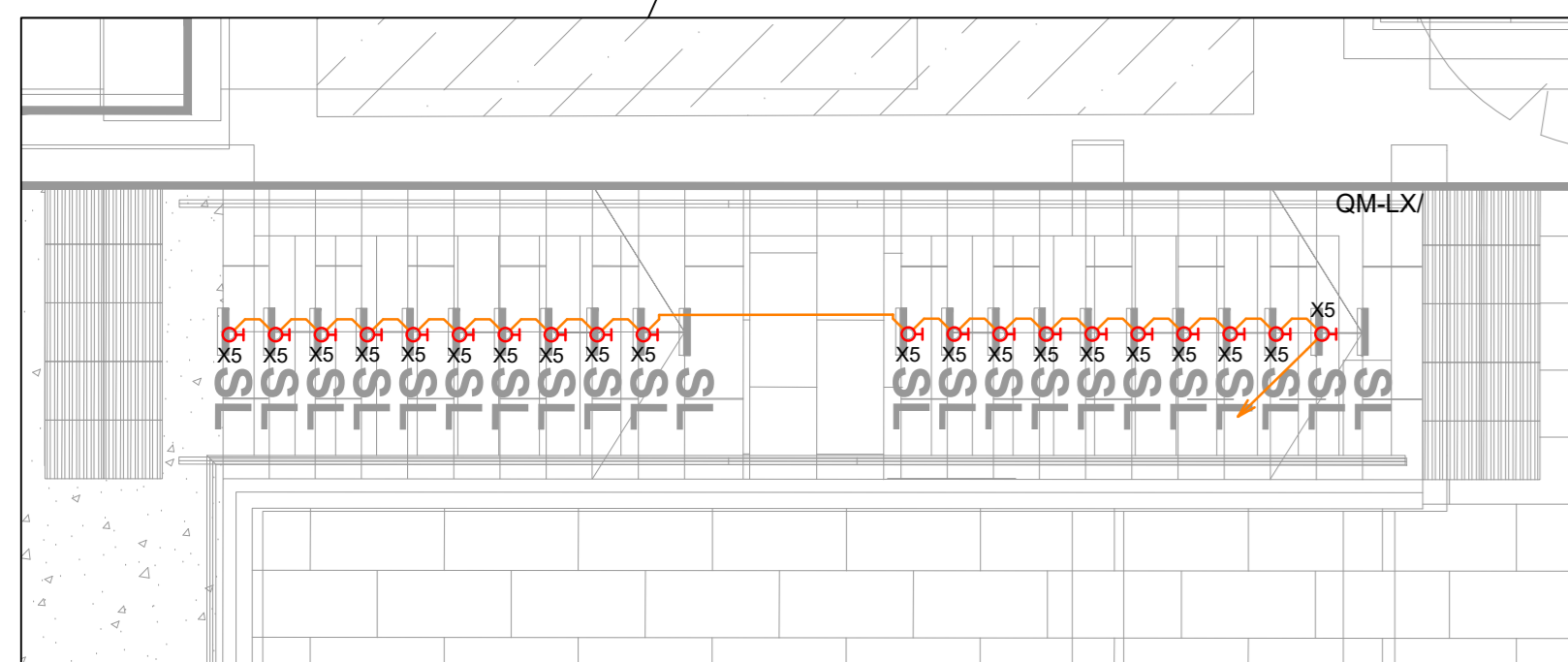
Tennis Courts

Reservoir

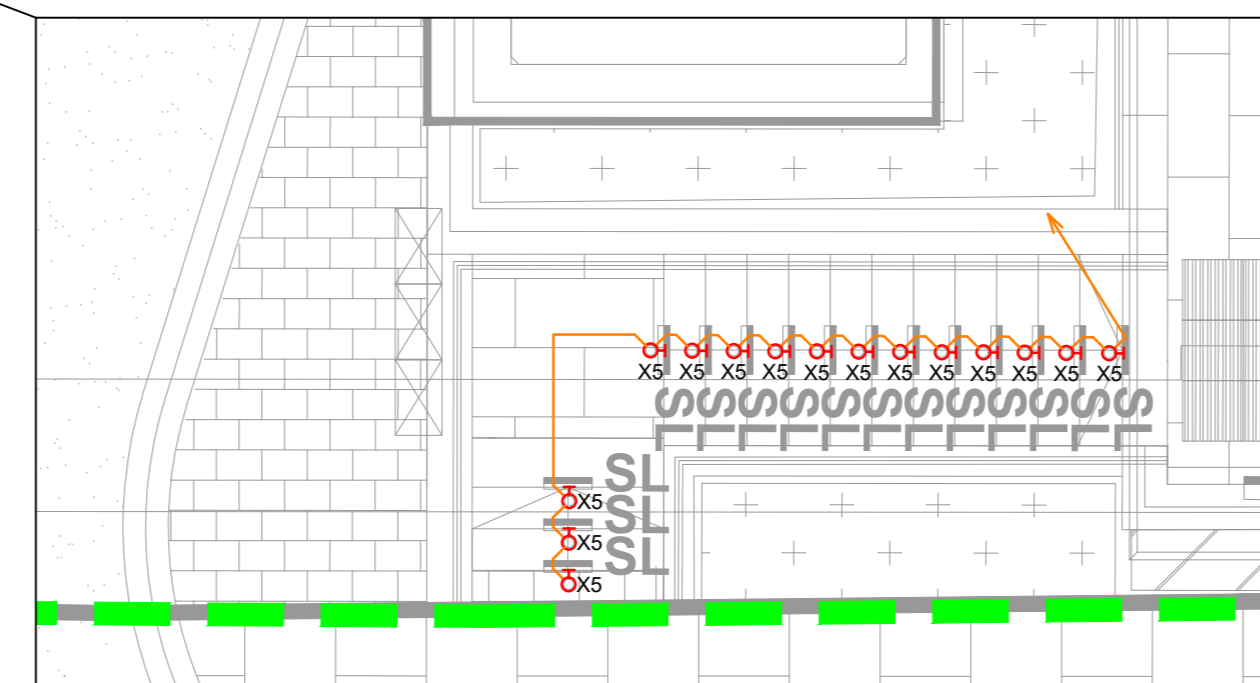


Kiddepore Avenue

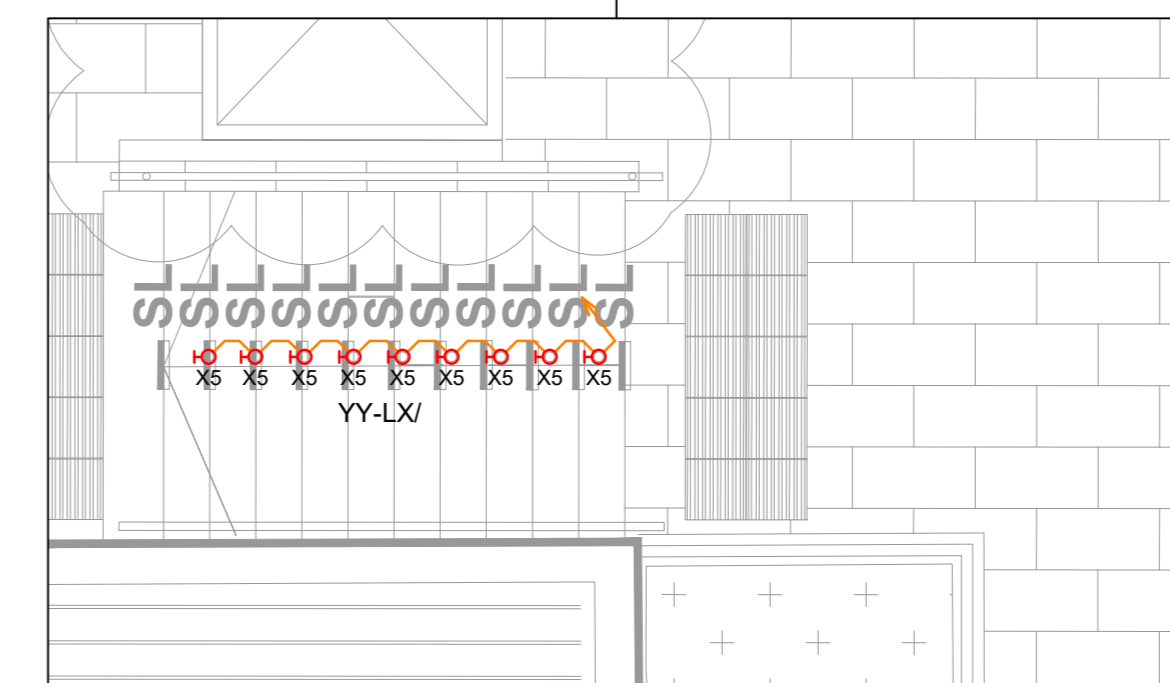
Scale 1:50



Scale 1:50



Scale 1:50



Luminaire Schedule

X1	700mm ground mounted bollard, IP65, LED light engine cast aluminium & stainless steel, black finish, integral control gear, 250lm, 3000K BEGA 77239/ 77249
X2	Spike mounted tree floodlight, IP65, LED light engine, cast aluminium & stainless steel construction, black finish, safety glass, remote driver, 525lm, 3000K BEGA - 77326
X3	Recessed wall mounted floor washer, IP65, LED light engine, cast aluminium & stainless steel construction, black finish, textured glass, 515lm 3000K BEGA - 33172
X4	Recessed in ground uplighter, IP68, LED light engine or HID lamp, cast aluminium & stainless steel construction, stainless steel finish, safety glass, 790lm, 3000K BEGA - 77163
X5	Recessed step mounted floor washer, IP65, LED light engine, cast aluminium & stainless steel construction, black finish, opal glass, 565lm, 3000K BEGA - 33054
X6	IP66 pole mounted luminaire, LED light engine, die cast aluminium construction, black finish, 2580lm, 3000K. To be installed on 4m column Iguzzini - BP69
X7	IP64 surface mounted shallow circular luminaire, die cast aluminium, graphite colour finish, 1900lm, 3000K BEGA - 33680

Copyright - This drawing and the designs it represents are the property of MKP Consultants Ltd and shall not be copied, circulated or issued other than as necessary to fulfil contractual requirements of the project.

DO NOT scale from this drawing - site measure only.

- Notes**
- This drawing shall be read in conjunction with all other mechanical, electrical, public health, architectural and structural drawings and specifications for this project.
 - The works comprise the design, manufacturing, factory testing, supply, delivering to site, manoeuvring into position, erection, connecting up, testing, commissioning, performance testing and handing over in working order the complete electrical installation.
 - Carry out the complete design of all electrical services to meet the Employers Requirements, specifications, schedules, drawings and other related documents and information provided.
 - All design work shall be carried out by suitably qualified and experienced personnel. Submit as part of the tender return the names, qualifications and experience of the personnel who will carryout the design.
 - Produce drawings, calculations and documentation to form a comprehensive design information package. This design information package shall be submitted to the Engineer for comment and approval prior to commencement of ordering materials or starting work on site.
 - Submit to the local Authority drawings and other information as required in order to obtain all necessary approvals. Submit to the Engineer copies of the letters of approval received from each Authority.
 - Ensure the completed installation meets the specified and/or implied performance for the installation.
 - Include all items of either a temporary or permanent nature which may or may not be detailed or shown on the drawings but which are by implication associated with the works or by generally accepted standards of good practice necessary and/or essential to render the installation complete and safe in operation.
 - Carry out the works and complete the works in every respect to the reasonable satisfaction of the Engineer and in conformity with the reasonable directions and requirements of the Engineer.
 - The works shall be carried out in accordance with the 17th edition of the IEE Wiring Regulations BS7671: 2008 including all amendments to No. 3: 2015 and in accordance with all other relevant British Standards, Codes of Practice etc.
 - Fully coordinate all aspects of the works with themselves, the structure, the architecture and systems, equipment & services installed by Others.
 - All redundant materials shall be disposed of by an approved contractor in accordance with WEEE regulations.
 - Provide a complete system of labelling, indexing, colour coding and notices to clearly identify each item of equipment, its location and function as well as providing warning of hazard and danger and identifying procedures for safe operation and emergency action.
 - The positioning of all ducts, cables and luminaires shall be coordinated with both the hard and soft landscaping.

- Legend**
- Ground recessed up light type as schedule
 - Ground mounted directional spot light
 - Ground mounted bollard
 - Wall light
 - Lighting switch line, n denotes type:
2 = 2 way
X = Intermediate
 - Photocell
 - Time switch with manual override
 - Denotes extent of works

Rev	Date	Description
T4	Apr'17	Tender Issue
T3	Sep'16	Tender Issue
T2	Aug'16	Tender Issue
T1	May'16	Tender Issue



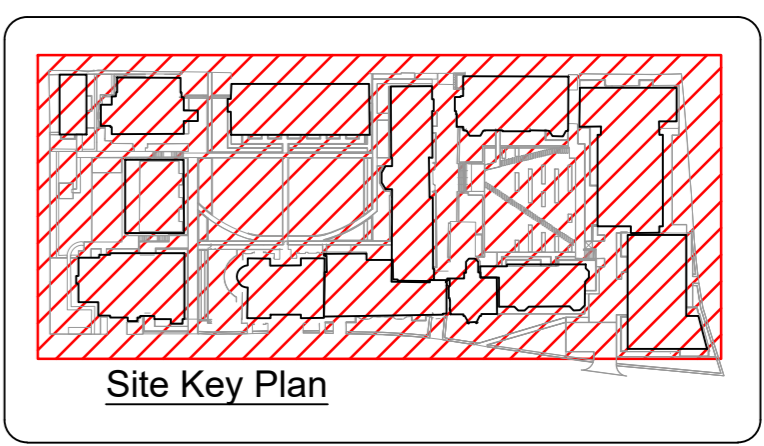
Project Title
KIDDEPORE AVENUE LONDON

Drawing Title
EXTERNAL LIGHTING LAYOUT

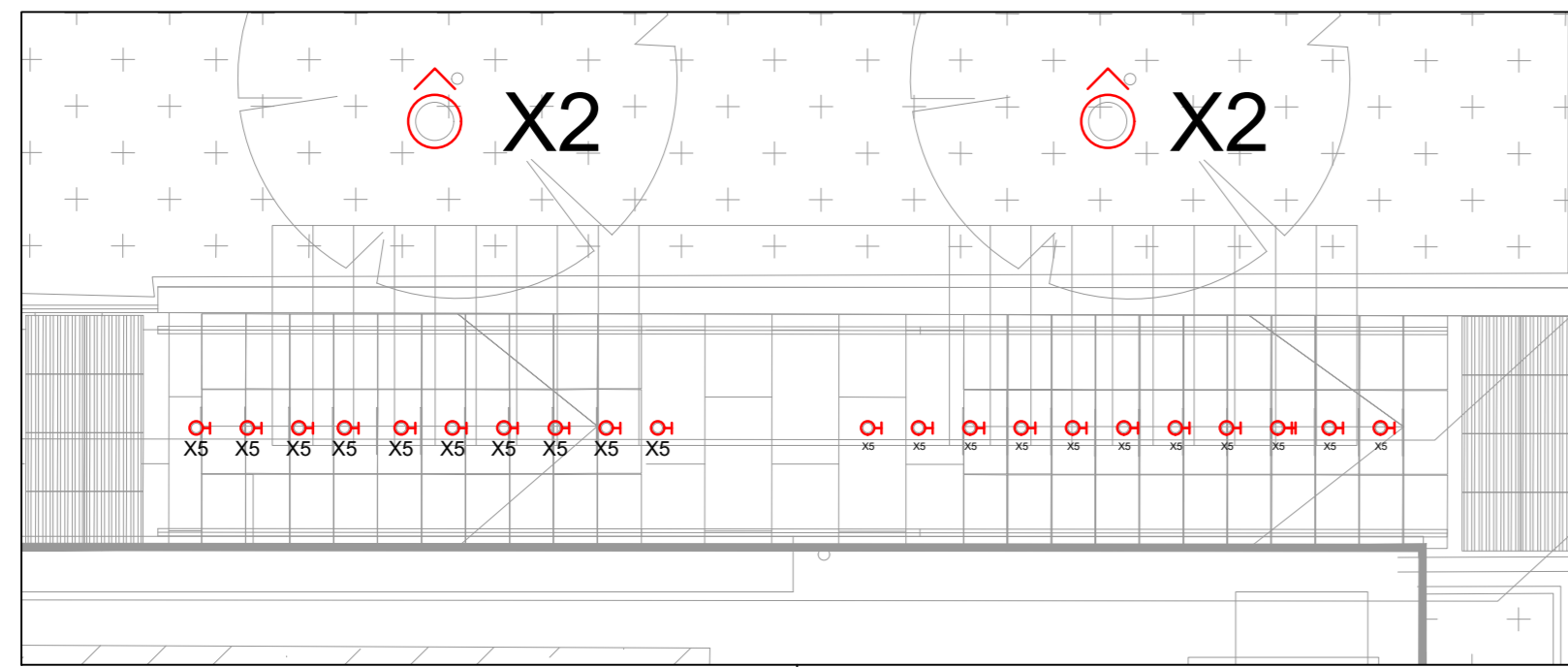
MKP CONSULTANTS
ENGINEERING EXCELLENCE
Warren Farm Barn, Andover Road,
Micheldever Station, Winchester, SO21 3FL
Tel. 01962 774665, www.mkpg.com

Drawn	Date	Checked	Approved
DB	APR'16	DHB	PK
Scale	Size	Issue	
1:200	A4 A3 A1 A0	Preliminary Construction	Tender
Dwg. No.	9200-DRG-19YY-00011		Rev
			T4

Drawing based on Fabrik drawing no. D2280-L-100 - Rev D



Scale 1:50



Tennis Courts

Reservoir

Luminaire Schedule	
X1	700mm ground mounted bollard, IP65, LED light engine cast aluminium & stainless steel, black finish, integral control gear, 250lm, 3000K BEGA 77239/ 77249
X2	Spike mounted tree floodlight, IP65, LED light engine, cast aluminium & stainless steel construction, black finish, safety glass, remote driver, 525lm, 3000K BEGA - 77326
X3	Recessed wall mounted floor washer, IP65, LED light engine, cast aluminium & stainless steel construction, black finish, textured glass, 515lm 3000K BEGA - 33172
X4	Recessed in ground uplighter, IP68, LED light engine or HID lamp, cast aluminium & stainless steel construction, stainless steel finish, safety glass, 790lm, 3000K BEGA - 77163
X5	Recessed step mounted floor washer, IP65, LED light engine, cast aluminium & stainless steel construction, black finish, opal glass, 565lm, 3000K BEGA - 33054
X6	IP66 pole mounted luminaire, LED light engine, die cast aluminium construction, black finish, 2580lm, 3000K. To be installed on 4m column Igzuzini - BP69
X7	IP64 surface mounted shallow circular luminaire, die cast aluminium, graphite colour finish, 1900lm, 3000K BEGA - 33680

Copyright - This drawing and the designs it represents are the property of MKP Consultants Ltd and shall not be copied, circulated or issued other than as necessary to fulfil contractual requirements of the project.
DO NOT scale from this drawing - site measure only.

- ### Notes
- This drawing shall be read in conjunction with all other mechanical, electrical, public health, architectural and structural drawings and specifications for this project.
 - The works comprise the design, manufacturing, factory testing, supply, delivering to site, manoeuvring into position, erection, connecting up, testing, commissioning, performance testing and handing over in working order the complete electrical installation.
 - Carry out the complete design of all electrical services to meet the Employers Requirements, specifications, schedules, drawings and other related documents and information provided.
 - All design work shall be carried out by suitably qualified and experienced personnel. Submit as part of the tender return the names, qualifications and experience of the personnel who will carryout the design.
 - Produce drawings, calculations and documentation to form a comprehensive design information package. This design information package shall be submitted to the Engineer for comment and approval prior to commencement of ordering materials or starting work on site.
 - Submit to the local Authority drawings and other information as required in order to obtain all necessary approvals. Submit to the Engineer copies of the letters of approval received from each Authority.
 - Ensure the completed installation meets the specified and/or implied performance for the installation.
 - Include all items of either a temporary or permanent nature which may or may not be detailed or shown on the drawings but which are by implication associated with the works or by generally accepted standards of good practice necessary and/or essential to render the installation complete and safe in operation.
 - Carry out the works and complete the works in every respect to the reasonable satisfaction of the Engineer and in conformity with the reasonable directions and requirements of the Engineer.
 - The works shall be carried out in accordance with the 17th edition of the IEE Wiring Regulations BS7671:2008 including all amendments to No. 3: 2015 and in accordance with all other relevant British Standards, Codes of Practice etc.
 - Fully coordinate all aspects of the works with themselves, the structure, the architecture and systems, equipment & services installed by Others.
 - All redundant materials shall be disposed of by an approved contractor in accordance with WEEE regulations.
 - Provide a complete system of labelling, indexing, colour coding and notices to clearly identify each item of equipment, its location and function as well as providing warning of hazard and danger and identifying procedures for safe operation and emergency action.
 - The positioning of all ducts, cables and luminaires shall be coordinated with both the hard and soft landscaping.

Isolines	
0.5 lx	
2.5 lx	
4.5 lx	
6.5 lx	
8.5 lx	
10.5 lx	
12.5 lx	
14.5 lx	
16.5 lx	
18.5 lx	
20.5 lx	
22.5 lx	
24.5 lx	
26.5 lx	
28.5 lx	
30.0 lx	

- ### Legend
- Ground recessed up light type as schedule
 - Ground mounted directional spot light
 - Ground mounted bollard
 - Wall light
 - Lighting switch line, n denotes type:
2 = 2 way
X = Intermediate
 - Photocell
 - Time switch with manual override
 - Denotes extent of works

Rev	Date	Description
T2	Apr'17	Tender Issue
T1	May'16	Tender Issue



Project Title
KIDDERPORE AVENUE LONDON

Drawing Title
EXTERNAL LIGHTING ISOLINE PLANNING LAYOUT

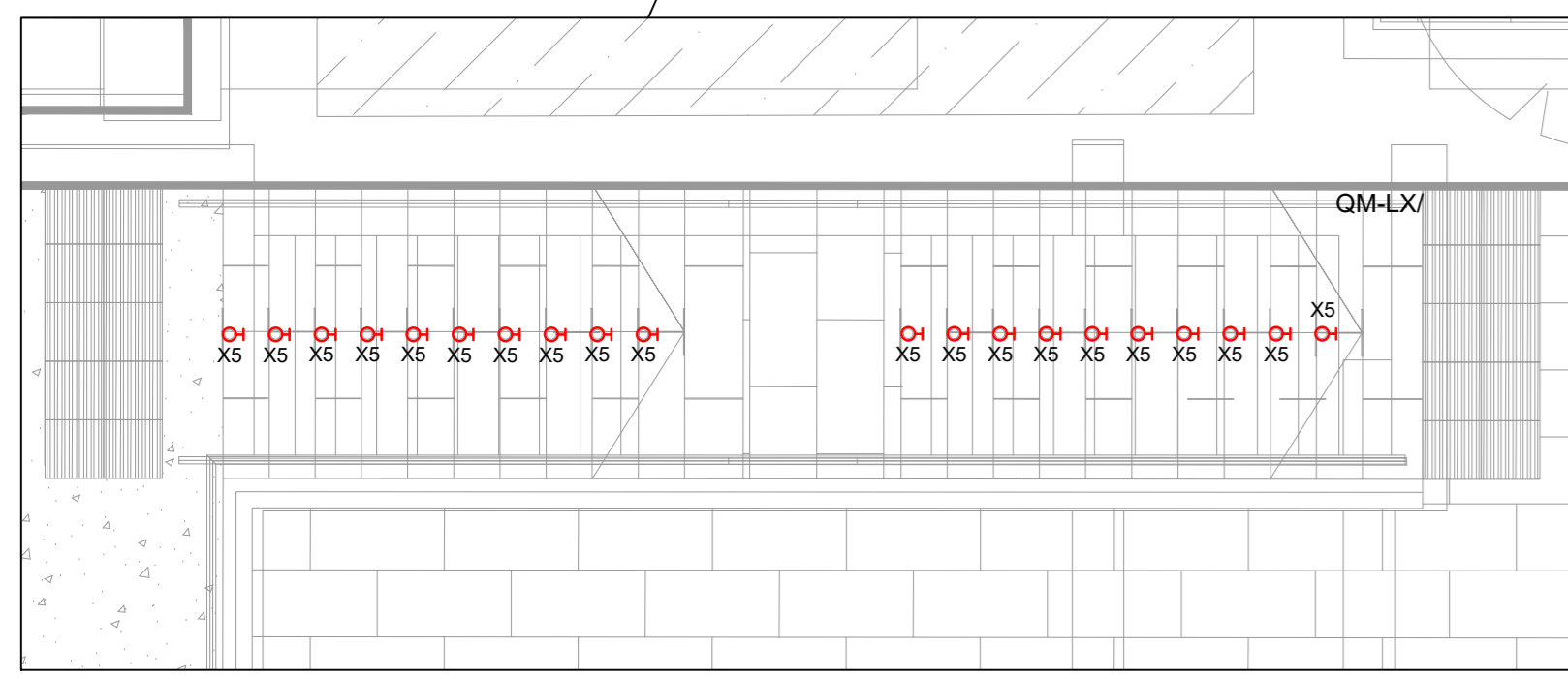
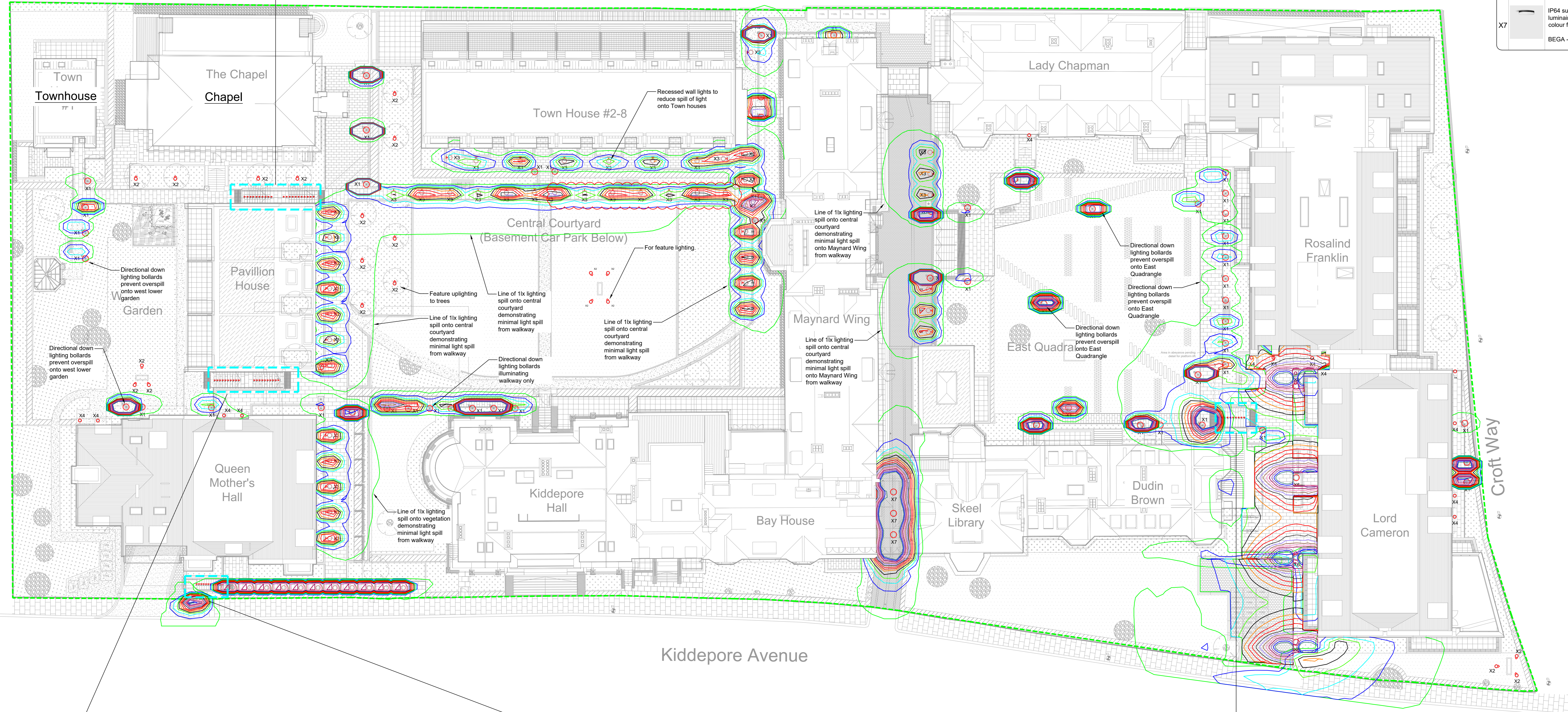
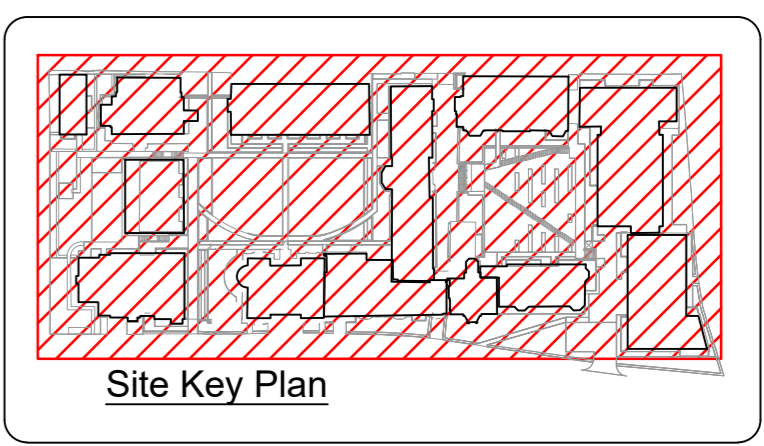
MKP CONSULTANTS
ENGINEERING EXCELLENCE
Warren Farm Barn, Andover Road,
Micheldever Station, Winchester, SO21 3FL
Tel. 01962 774665, www.mkpg.com

Drawn	Date	Checked	Approved
DB	APR'16	DHB	PK

Scale	Size	Issue
1:200	A4	Preliminary
	A3	Tender
	A1	Construction
	A0	

Drg. No.	Rev
9200-DRG-SK-00011	T2

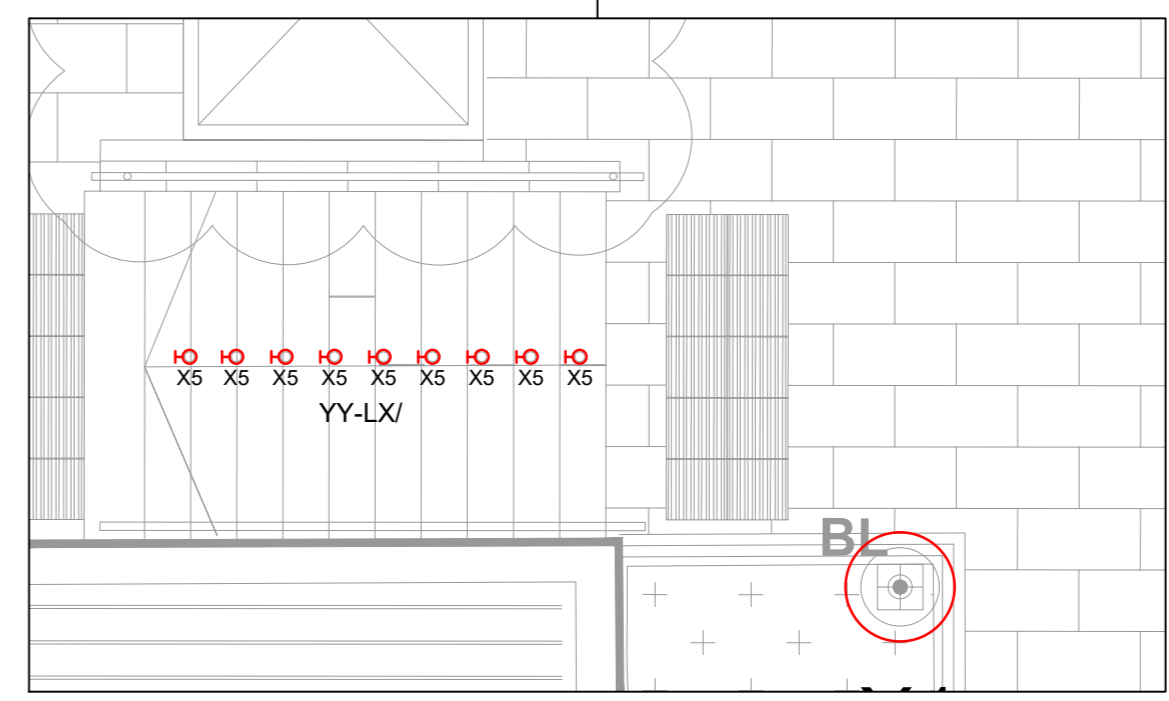
Drawing based on Fabrik drawing no. D2280-L-100 - Rev D



Scale 1:50



Scale 1:50



Scale 1:50