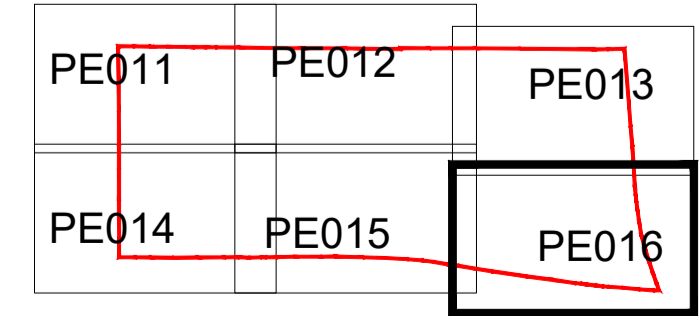


Notes
 1. This drawing is the property of fabrik ltd. It must not be copied or reproduced without written consent.
 2. Only figured dimensions are to be taken from this drawing. All contractors must visit site and be responsible for taking and checking all dimensions related to the works shown on the drawing.

fabrik
 Lenton House
 16 Lenton Street
 Alton
 Hampshire
 GU34 1HG
 T: 01420 593250
 E: alton@fabrikuk.com
 W: www.fabrikuk.com



MOUNT ANVIL	
NO COMMENT	A STATUS A
MINOR COMMENTS	B STATUS B
REVISED DRAWING TO FOLLOW	C STATUS C- REJECTED
DATE:	
REVIEWED BY:	

No.	Date	Reason	MF	NB
T5	17.05.2017	Addition of gravel margin to boundary. Cycle stand relocated. Issued for Tender	NB	JR
T4	25.04.2017	Minor updates to design coordination. Issued for Tender	NB	JR
T3	03.03.2017	Sheet updated. Issued for Tender	HvK	NB
T2	25.11.2016	Minor layout amendments	HvK	NB
T1	03.10.2016	Issued for Tender	HvK	NB
P04	15.07.2016	Work in Progress Issued for Information	HvK	NB
P03	22.06.2016	Work in Progress Issued for Information	HvK	NB
P02	10.06.2016	Work in Progress Issued for Information	HvK	NB
P01	26.04.2016	Work in Progress Issued for Information	HvK	NB

External References:

- fabrikWorkingAutoCAD\2280 working 100.dwg
- Tree Survey\recvd-15-04-08\09166 Draft Impact Assessment rev 5fab.dwg
- fabrikWorkingAutoCAD\ref bases\2280 roofs xref.dwg
- Architect\Recvd-14-11-26\157780 OS map.dwg

Project
Kidderpore Avenue, Hampstead for Mount Anvil

Drawing
Hard Landscape General Arrangement Sheet 6 of 6

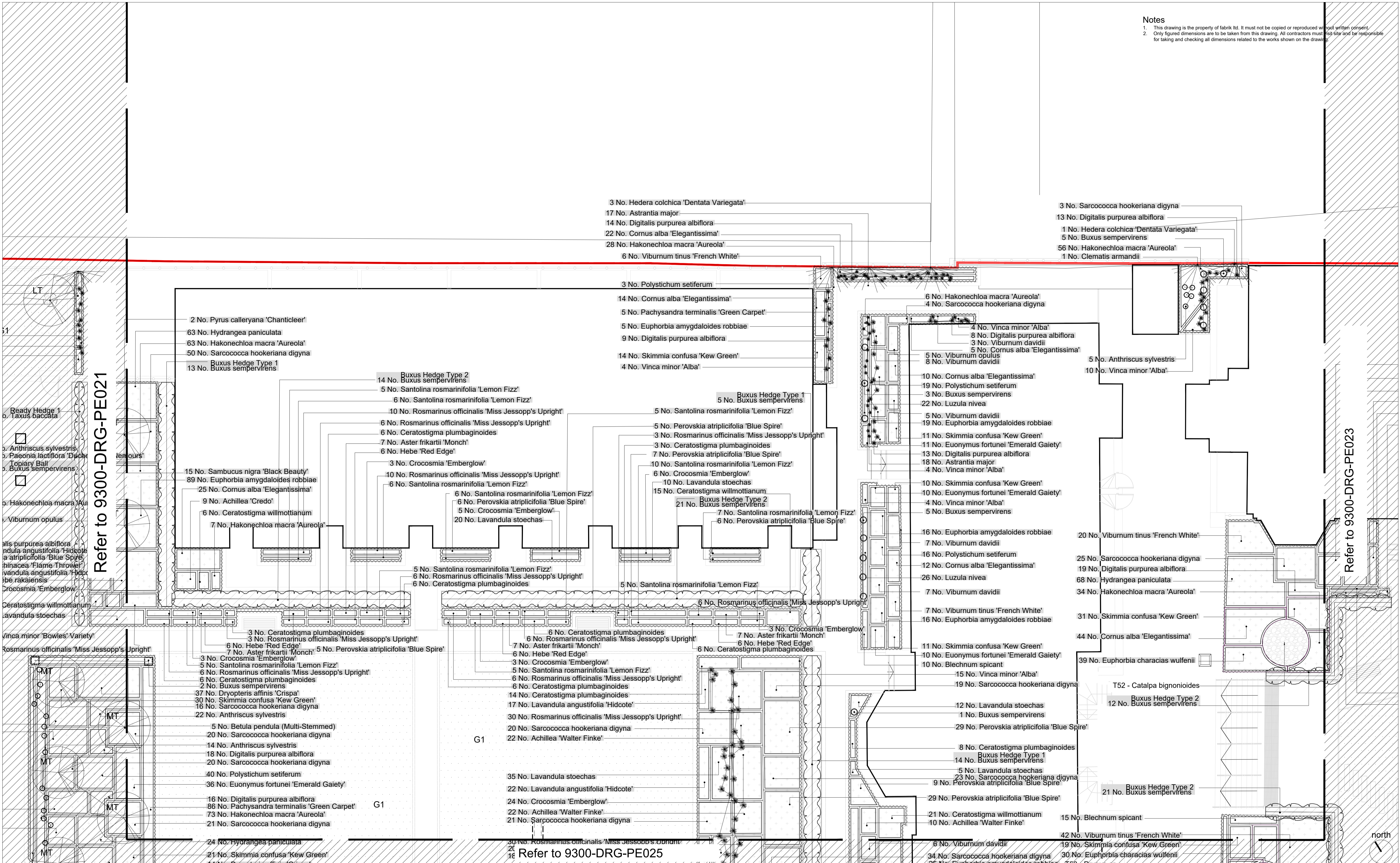
Scale	Date	Checked	Drawn
1:100 @ A1	Mar '16	NB	HvK
Drawing No.	9300-DRG-PE016		Revision
			T5

<input type="checkbox"/> Preliminary	<input type="checkbox"/> Issued for Design/Information
<input type="checkbox"/> Issued for Planning Approval	<input checked="" type="checkbox"/> Issued for Tender
<input type="checkbox"/> Issued for Construction	<input type="checkbox"/> As Built

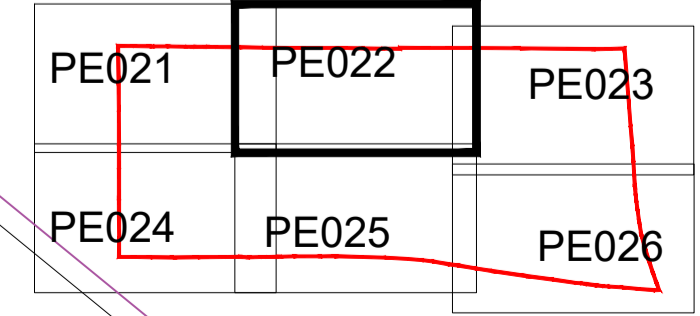
Drawing sheet size - A1 Copyright Reserved ©

Notes: To be read in conjunction with 9300-DRG-GN005 Landscape Legend

Notes
 1. This drawing is the property of fabrik ltd. It must not be copied or reproduced without written consent.
 2. Only figured dimensions are to be taken from this drawing. All contractors must visit site and be responsible for taking and checking all dimensions related to the works shown on the drawing.



fabrik
 Lenten House
 15 Lenten Street
 Alton
 Hampshire
 GU34 1HG
 T: 01420 593250
 E: alton@fabrikuk.com
 W: www.fabrikuk.com



MOUNT ANVIL	
NO COMMENT	A STATUS A
MINOR CHANGES	B STATUS B
REVISED DRAWING TO FOLLOW	C STATUS C- REJECTED
DATE:	
REVIEWED BY:	

T5	16.06.2017	Minor updates to hedge types and cycle store area. Issued for Tender	AT	JR
T4	25.04.2017	Minor updates to design coordination. Issued for Tender	AT	JR
T3	10.03.2017	Sheet updated. Issued for Tender	AT	JR
T2	25.11.2016	Minor amends to layout	HVK	NB
T1	03.10.2016	Issued for Tender	HVK	NB
P02	15.07.2016	Work in Progress Issued for Information	HVK	NB
P01	25.04.2016	Work in Progress Issued for Information	HVK	NB
No.	Date	Reason	Drawn	Checked

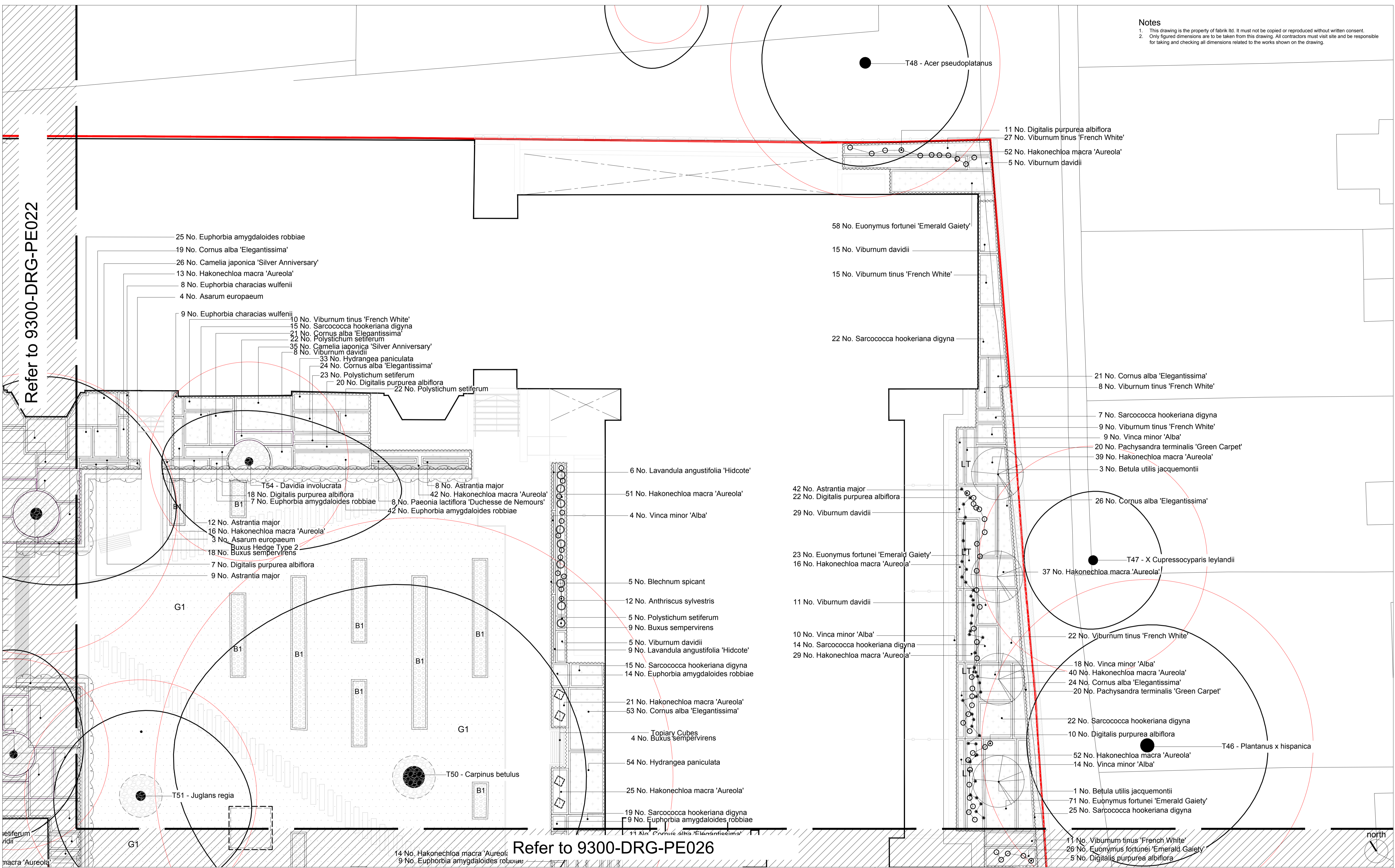
External References:
 • fabrik\Working\AutoCAD\D2280 working 100.dwg
 • Tree Survey\recvd-15-04-08\09166 Draft Impact Assessment rev 5fab.dwg
 • fabrik\Working\AutoCAD\ref bases\D2280 roofs xref.dwg
 • Architect\recvd-14-11-26\157780 OS map.dwg

Project
 Kiddepore Avenue, Hampstead
 for Mount Anvil

Drawing
 Soft Landscape General Arrangement Plan
 Sheet 2 of 6

Scale	Date	Checked	Drawn
1:100 @ A1	Mar '16	NB	HvK
Drawing No.	Revision		
9300-DRG-PE022	T5		
<input type="checkbox"/> Preliminary	<input type="checkbox"/> Issued for Design/Information		
<input type="checkbox"/> Issued for Planning Approval	<input checked="" type="checkbox"/> Issued for Tender		
<input type="checkbox"/> Issued for Construction	<input type="checkbox"/> As Built		
Drawing sheet size - A1	Copyright Reserved ©		

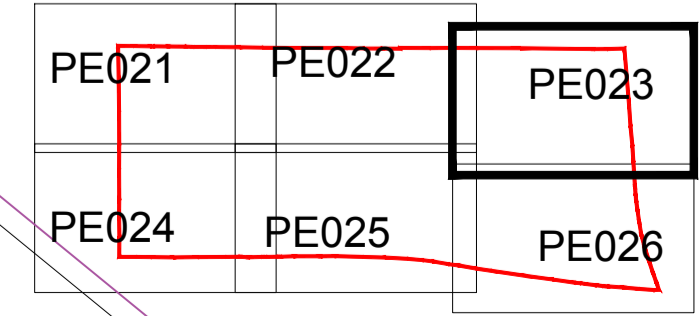
Notes
 1. This drawing is the property of fabrik ltd. It must not be copied or reproduced without written consent.
 2. Only figured dimensions are to be taken from this drawing. All contractors must visit site and be responsible for taking and checking all dimensions related to the works shown on the drawing.



Refer to 9300-DRG-PE022

Refer to 9300-DRG-PE026

fabrik
 Lenten House
 16 Lenten Street
 Alton
 Hampshire
 GU34 1HG
 T: 01420 593250
 E: alton@fabrikuk.com
 W: www.fabrikuk.com



MOUNT ANVIL	
NO COMMENT	A STATUS A
MINOR COMMENTS	B STATUS B
REVISED DRAWING TO FOLLOW	C STATUS C- REJECTED
DATE:	
REVIEWED BY:	

No.	Date	Reason	MF	NB	AT	JR	AT	JR	HvK	NB	HvK	NB	Drawn	Checked
T5	17.05.2017	Minor updates to boundary following comments. Issued for Tender												
T4	25.04.2017	Minor updates to design coordination. Issued for Tender												
T3	10.03.2017	Sheet updated. Issued for Tender												
T2	25.11.2016	Minor amendments to layout												
T1	03.10.2016	Issued for Tender												
P02	15.07.2016	Work in Progress Issued for Information												
P01	25.04.2016	Work in Progress Issued for Information												

External References:
 • fabrik\Working\AutoCAD\2280 working 100.dwg
 • Tree Survey\recvd-15-04-08\09166 Draft Impact Assessment rev 5fab.dwg
 • fabrik\Working\AutoCAD\ref bases\2280 roofs xref.dwg
 • Architect\Recvd-14-11-26\157780 OS map.dwg

Project
 Kiddepore Avenue, Hampstead
 for Mount Anvil

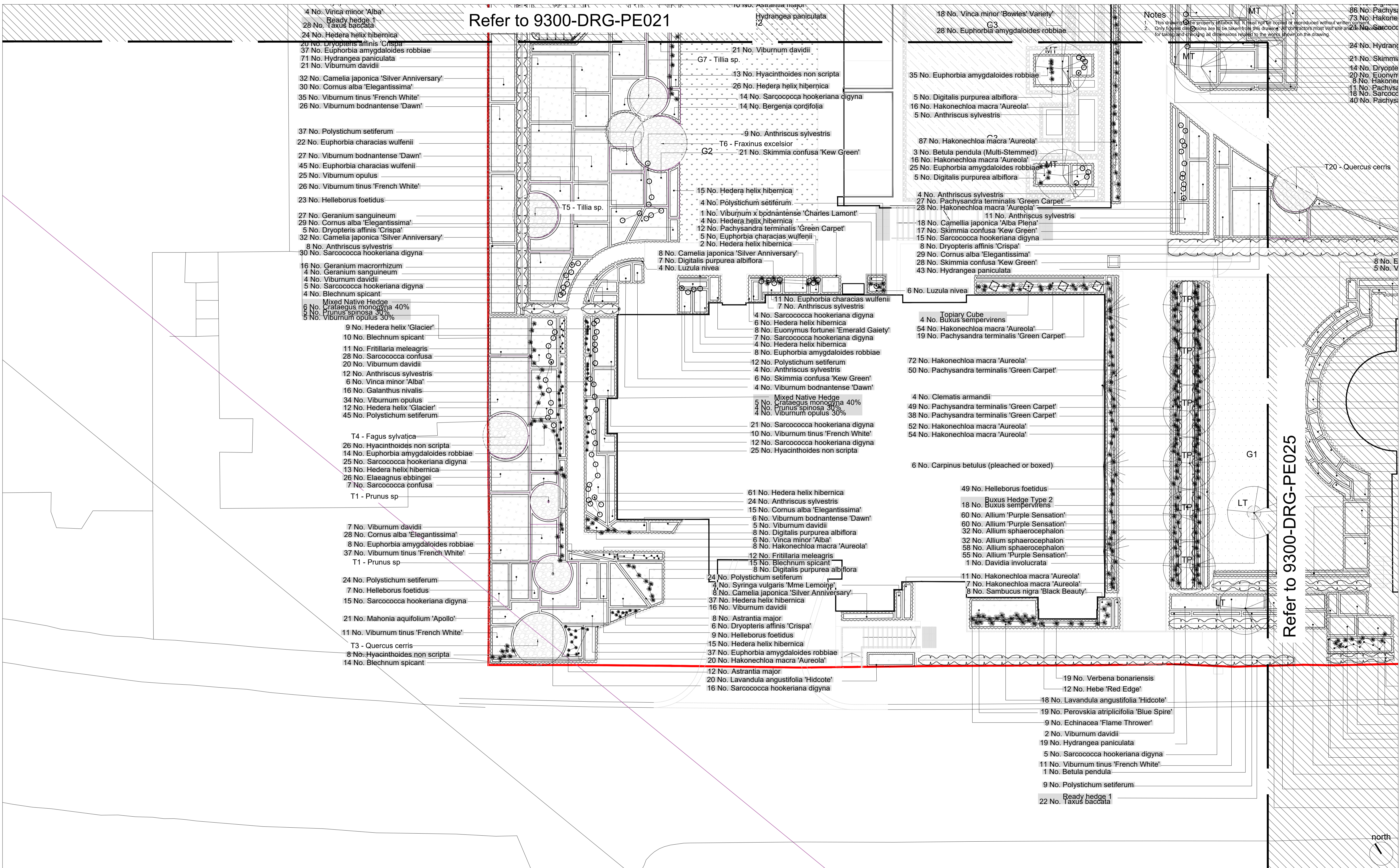
Drawing
 Soft Landscape General Arrangement Plan
 Sheet 3 of 6

Scale	Date	Checked	Drawn
1:100 @ A1	Mar '16	NB	HvK
Drawing No.			
9300-DRG-PE023			
Revision			
T5			

<input type="checkbox"/> Preliminary	<input type="checkbox"/> Issued for Design/Information
<input type="checkbox"/> Issued for Planning Approval	<input checked="" type="checkbox"/> Issued for Tender
<input type="checkbox"/> Issued for Construction	<input type="checkbox"/> As Built

Drawing sheet size - A1
 Copyright Reserved ©

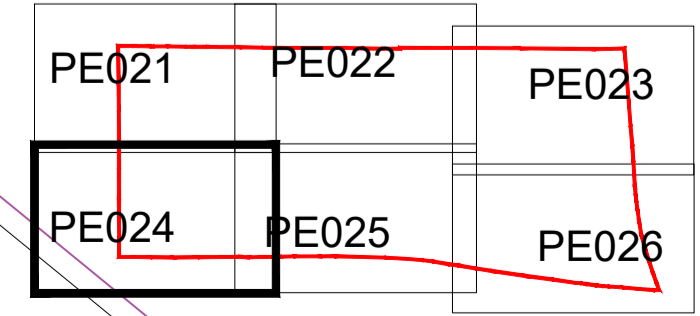
Notes: To be read in conjunction with 9300-DRG-GN005 Landscape Legend, 9300-DRG-GN006 Planting Schedule.



Refer to 9300-DRG-PE021

Refer to 9300-DRG-PE025

fabrik
 16 Lenton Street
 Alton
 Hampshire
 GU34 1HG
 T: 01420 593250
 E: alton@fabrikuk.com
 W: www.fabrikuk.com



MOUNT ANVIL	
NO COMMENT	A STATUS A
MINOR COMMENTS	B STATUS B
REVISED DRAWING TO FOLLOW	C STATUS C-REJECTED
DATE:	
REVIEWED BY:	

No.	Date	Reason	Drawn	Checked
T6	16.06.2017	Mixed native hedge species. Rear of pavilion planter box. Issued for Tender	ST	NB
T5	17.05.2017	Addition of raised planter and associated planting. Issued for Tender	MF	NB
T4	25.04.2017	Minor updates to design coordination. Issued for Tender	AT	JR
T3	10.03.2017	Sheet updated. Issued for Tender	AT	JR
T2	25.11.2016	Minor amends to layout	HvK	NB
T1	03.10.2016	Issued for Tender	HvK	NB
P02	15.07.2016	Work in Progress Issued for Information	HvK	NB
P01	25.04.2016	Work in Progress Issued for Information	HvK	NB
No.	Date	Reason	Drawn	Checked

External References:

- fabrik\Working\AutoCAD\D2280 working 100.dwg
- Tree Survey\recvd-15-04-08\09166 Draft Impact Assessment rev 5fab.dwg
- fabrik\Working\AutoCAD\ref bases\D2280 roofs xref.dwg
- Architect\recvd-14-11-26\157780 OS map.dwg

Project
 Kiddepore Avenue, Hampstead
 for Mount Anvil

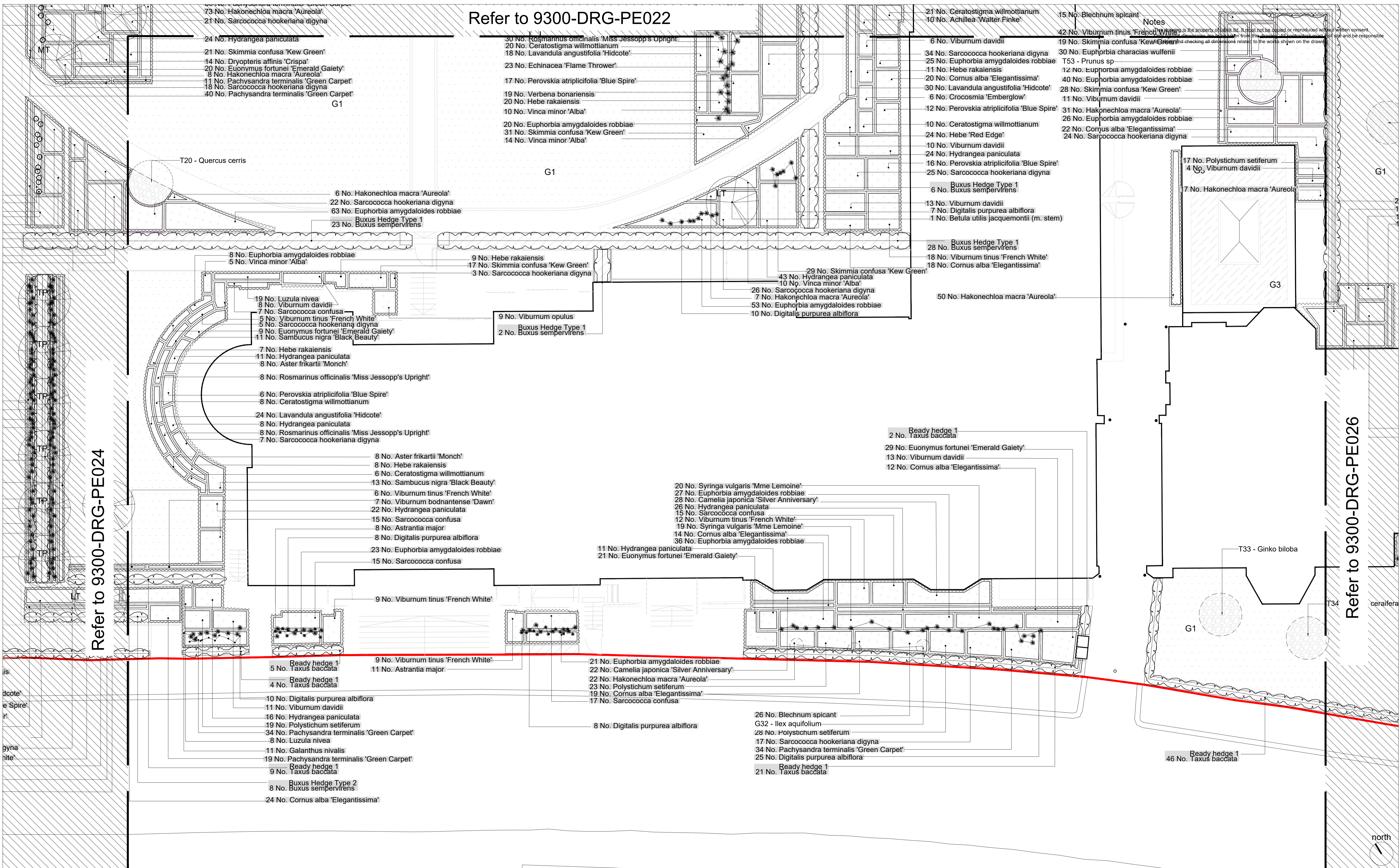
Drawing
 Soft Landscape General Arrangement Plan
 Sheet 4 of 6

Scale	Date	Checked	Drawn
1:100 @ A1	Mar '16	NB	HvK
Drawing No. 9300-DRG-PE024			
Revision T6			

Legend	Legend
<input type="checkbox"/> Preliminary	<input type="checkbox"/> Issued for Design/Information
<input type="checkbox"/> Issued for Planning Approval	<input checked="" type="checkbox"/> Issued for Tender
<input type="checkbox"/> Issued for Construction	<input type="checkbox"/> As Built

Drawing sheet size - A1
 Copyright Reserved ©

Notes: To be read in conjunction with 9300-DRG-GN005 Landscape Legend, 9300-DRG-GN006 Planting Schedule.



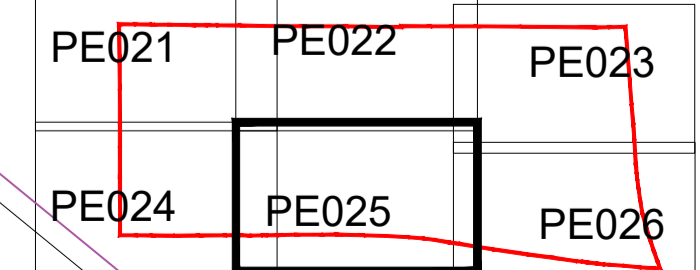
Refer to 9300-DRG-PE022

Refer to 9300-DRG-PE024

Refer to 9300-DRG-PE026

Notes
 This drawing is the property of Fabrik Ltd. It must not be copied or reproduced without written consent. Fabrik Ltd. shall not be held responsible for any errors or omissions. The user shall be responsible for checking all dimensions related to the works shown on the drawing.

fabrik
 15 Lantem Street
 Alton
 Hampshire
 GU34 1HG
 T: 01420 593250
 E: alton@fabrikuk.com
 W: www.fabrikuk.com



MOUNT ANVIL	
NO COMMENT	A STATUS A
MINOR COMMENTS	B STATUS B
REVISED DRAWING TO FOLLOW	C STATUS C- REJECTED
DATE:	
REVIEWED BY:	

T5	16.06.2017	Minor updates, box hedge type corrected. Issued for Tender	ST	NB
T4	25.04.2017	Minor updates to design coordination. Issued for Tender	AT	JR
T3	10.03.2017	Sheet updated. Issued for Tender	AT	JR
T2	25.11.2016	Minor amends to layout	HvK	NB
T1	03.10.2016	Issued for Tender	HvK	NB
P02	15.07.2016	Work in Progress Issued for Information	HvK	NB
P01	25.04.2016	Work in Progress Issued for Information	HvK	NB
No.	Date	Reason	Drawn	Checked

External References:

- fabrikWorking\AutoCAD\2280 working 100.dwg
- Tree Survey\recvd-15-04-0809166 Draft Impact Assessment rev 5fab.dwg
- fabrikWorking\AutoCAD\ref bases\2280 roofs xref.dwg
- Architect\Recvd-14-11-26157780 OS map.dwg

Project
 Kiddepore Avenue, Hampstead
 for Mount Anvil

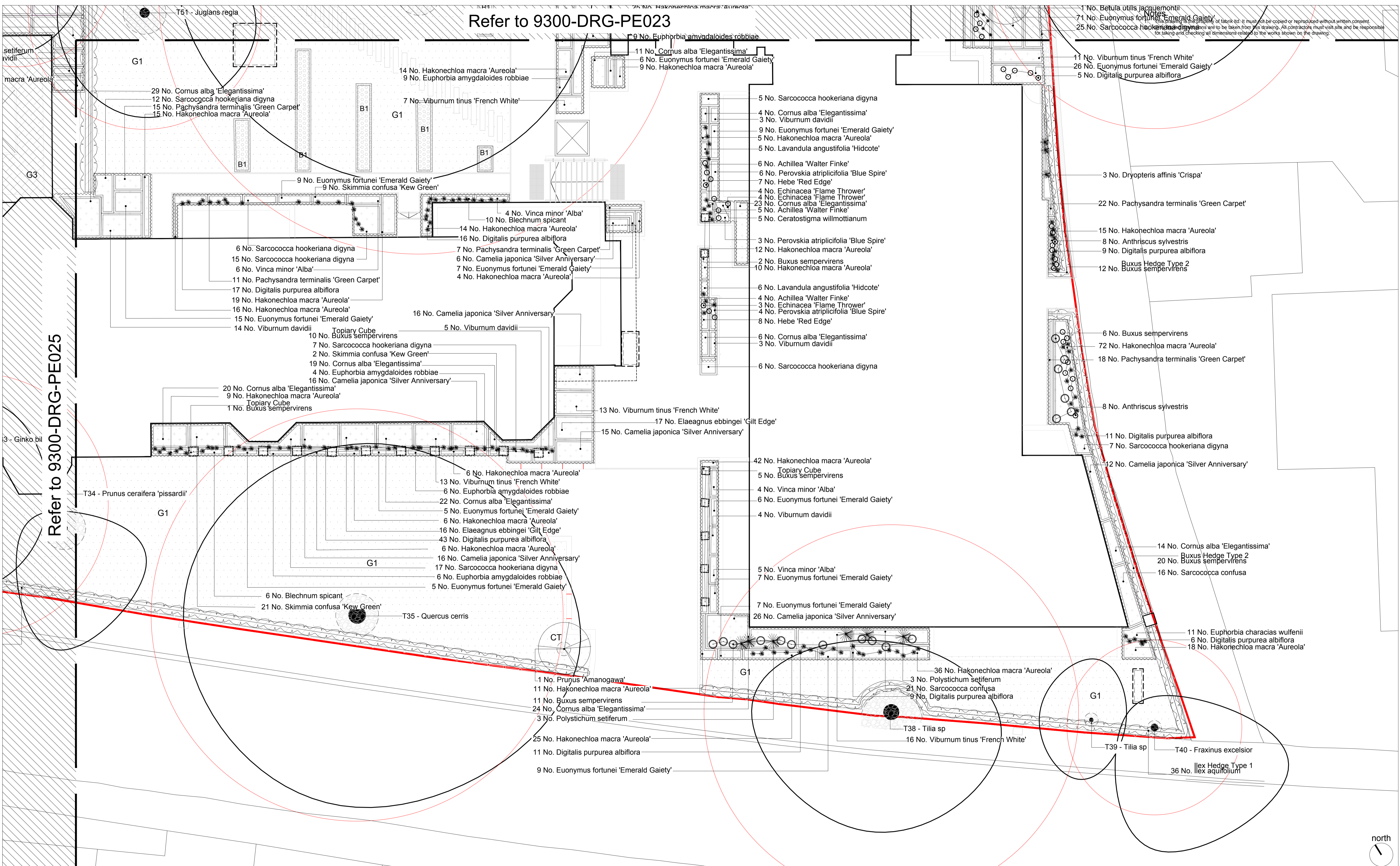
Drawing
 Soft Landscape General Arrangement Plan
 Sheet 5 of 6

Scale	1:100 @ A1	Date	Mar '16	Checked	NB	Drawn	HvK
Drawing No.	9300-DRG-PE025	Revision	T5				
<input type="checkbox"/> Preliminary <input type="checkbox"/> Issued for Planning Approval <input type="checkbox"/> Issued for Construction		<input type="checkbox"/> Issued for Design/Information <input checked="" type="checkbox"/> Issued for Tender <input type="checkbox"/> As Built					
Drawing sheet size - A1		Copyright Reserved ©					

Notes: To be read in conjunction with 9300-DRG-GN005 Landscape Legend, 9300-DRG-GN006 Planting Schedule.

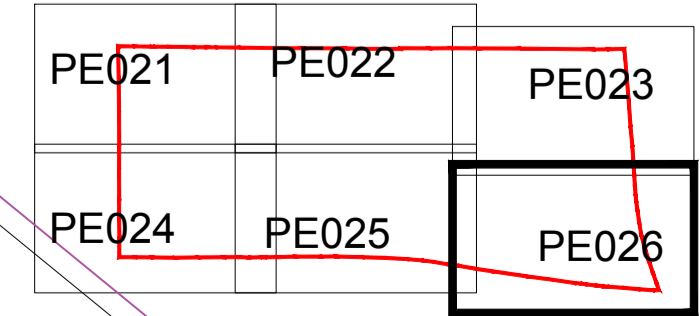
Refer to 9300-DRG-PE023

Notes:
 This drawing is the property of Fabrik Ltd. It must not be copied or reproduced without written consent.
 All dimensions are to be taken from this drawing. All contractors must visit site and be responsible for taking and checking all dimensions related to the works shown on the drawing.



Refer to 9300-DRG-PE025

fabrik
 Lenten House
 16 Lenten Street
 Alton
 Hampshire
 GU34 1HG
 T: 01420 593250
 E: alton@fabrikuk.com
 W: www.fabrikuk.com



MOUNT ANVIL	
NO COMMENT	A STATUS A
MINOR COMMENTS	B STATUS B
REVISED DRAWING TO FOLLOW	C STATUS C-REJECTED
DATE:	
REVIEWED BY:	

- T5 17.05.2017 Minor updates to boundary following comments. Issued for Tender
 T4 25.04.2017 Minor updates to design coordination. Issued for Tender
 T3 10.03.2017 Sheet updated. Issued for Tender
 T2 25.11.2016 Minor amends to layout
 T1 03.10.2016 Issued for Tender
 P02 15.07.2016 Work in Progress Issued for Information
 P01 25.04.2016 Work in Progress Issued for Information
- Revisions:
 External References:
 • fabrik\Working\AutoCAD\2280 working 100.dwg
 • Tree Survey\recvd-15-04-08\09166 Draft Impact Assessment rev 5fab.dwg
 • fabrik\Working\AutoCAD\ref bases\2280 roofs xref.dwg
 • Architect\Recvd-14-11-26\157780 OS map.dwg

MF	NB
AT	JR
AT	JR
HVK	NB
HVK	NB
HVK	NB
HVK	NB
HVK	NB
HVK	NB
HVK	NB

Project
 Kiddepore Avenue, Hampstead
 for Mount Anvil

Drawing
 Soft Landscape General Arrangement Plan
 Sheet 6 of 6

Scale	Date	Checked	Drawn
1:100 @ A1	Mar '16	NB	HvK
Drawing No.		Revision	
9300-DRG-PE026		T5	
<input type="checkbox"/> Preliminary	<input type="checkbox"/> Issued for Design/Information	<input type="checkbox"/> Issued for Planning Approval	<input type="checkbox"/> Issued for Tender
<input type="checkbox"/> Issued for Construction	<input type="checkbox"/> As Built		

Drawing sheet size - A1
 Copyright Reserved ©