

Notes
 1. This drawing is the property of fabrik ltd. It must not be copied or reproduced without written consent.
 2. Only figured dimensions are to be taken from this drawing. All contractors must visit site and be responsible for taking and checking all dimensions related to the works shown on the drawing.

General

- Site Boundary**
- Detail Reference Callout**
- Extent of Basement**

Pavement Finishes

- Paving Type 1** Proposed Tarmac Surface Refer to Engineer's Specification
- Paving Type 2** Proposed Scoutmoor Yorkstone Sett Paving 240x160x100 mm Refer to dwg DE001/01-02 & Landscape Specification Section Q25/330
- Paving Type 3** Proposed Resin Bound Gravel 6mm, Pearl Grey. Refer to dwg DE001/03-05 & Landscape Specification Section Q23/225A
- Paving Type 4** Existing Heritage Granite Stone Sett Paving To be lifted, cleaned and re-sett to Heritage consultants direction.
- Paving Type 5** Proposed Scoutmoor Yorkstone Flag Paving 900x450x50 mm Refer to dwg DE001/06-08 & Landscape Specification Section Q25/310A
- Paving Type 5a** Proposed Greenmoor Rustic Yorkstone Flag Paving 900x450x50 mm Refer to dwg DE001/06-08 & Landscape Specification Section Q25/310B
- Paving Type 5b** Proposed Scoutmoor Yorkstone Flag Paving - trafficked 900x450x63 mm Refer to dwg DE002/01-02 & Landscape Specification Section Q25/310G
- Paving Type 5c** Proposed Greenmoor Rustic Yorkstone Flag Paving to Private Terraces 600x300x50 mm (relates with PT7 pedestal paving in some sunken terraces areas) Refer to dwg DE002/09 & Landscape Specification Section Q25/310H and Q25/127
- Paving Type 6** Proposed Scoutmoor Yorkstone Paving 600x300x50 mm Refer to dwg DE00/03-05 & Landscape Specification Section Q25/310C
- Paving Type 6a** Proposed Greenmoor Rustic Yorkstone Paving 600x300x50 mm Refer to dwg DE002/03-05 & Landscape Specification Section Q25/310D
- Paving Type 6b** Proposed Scoutmoor Yorkstone Paving 600x300x50 mm (on pedestal system in sunken terrace at apartment BH-01) Detail similar as for PT7
- Paving Type 7** Proposed Limestone Flag Stones 600x600x50 mm (on pedestal system in sunken terrace areas) Refer to dwg DE002/08-09 & Landscape Specification Section Q25/310F
- Paving Type 7** Proposed Limestone Flag Stones 600x600x50 mm (rigid lay on mortar bedding) Refer to dwg DE002/06-08 & Landscape Specification Section Q25/310F and Q25/127
- Paving Type 8** Proposed Greenmoor Rustic Yorkstone Paving Stepping Stone Refer to dwg DE003/01-03 & Landscape Specification Section Q25/310E
- Paving Type 10** Existing Retained/Reused Yorkstone Paving
- Paving Type 11** Proposed Ornamental Loose Pebble Trim Refer to dwg DE004/01 & Landscape Specification Section Q25/340
- Paving Type 12** Proposed Permeable Resin Bound Gravel Rustic Tweed Refer to dwg DE003/07-08 & Landscape Specification Section Q23/225
- Paving Type 13** Timber Decking to Roof Terraces 32mm thk Balau Refer to Architect's details

Note:
 For floor finishes to balconies and roof terraces refer to Architect's details

Boundaries

- Boundary Type 1** Proposed 1100mm high Black Metal Railing Refer to dwg DE006/01-02 & Landscape Specification Section Q40/340A
- Boundary Type 2** Proposed Brick Faced Retaining Wall with 1.1m high black metal plain style balustrade Refer to dwg DE007/07-08 & Landscape Specification Section F21/110A and L37/160A
- Boundary Type 2a** Proposed Brick Faced Retaining Wall with 1.1m high black metal heritage style balustrade Refer to dwg DE006/03-04 & Landscape Specification Section F21/110A and L37/160A
- Boundary Type 3** Proposed Hand/Guardrail at Steps 900mm from apex of Steps Refer to dwg DE031/01 & Landscape Specification Section L37/150
- Boundary Type 4** Proposed 1.8m high Close Board Timber Fence Refer to dwg DE006/07-08 & Landscape Specification Section Q40/310A
- Boundary Type 5** Existing Heritage Boundary Wall to be Removed and Rebuilt in accordance with Architect's specification and details.
- Boundary Type 6** Existing Heritage Railings to be Refurbished and Retained Refer to Architect's specification.
- Boundary Type 6a** Proposed Brick Retaining Wall with Replica Heritage Railings Refer to Architect's specification.
- Boundary Type 7** Proposed Limestone Clad Walls Various height with 1.1m high Glass Balustrade Refer to dwg DE007/01-02 & Landscape Specification Sections F21/110B, 110C & L37/160
- Boundary Type 7a** Proposed Limestone Clad Walls Various height with offset BT16 1.1m high Strained Wire Fence Refer to Refer to dwg SE004 & Landscape Specification Section F21/110B & Q40/140B
- Boundary Type 8** Existing Brick Retaining Wall with Concrete Coping Approx 1m high from paving level, to be retained with addition of railing element to provide Part K compliance Refer to dwg DE007/03-04
- Boundary Type 9** Wall with Silver Granite Coping & 1100mm High Glass Balustrade Refer to Architect's details
- Boundary Type 10** Proposed Retaining Wall Various height with Silver granite coping & 1100mm high Black Metal Heritage Style Balustrade Refer to dwg DE007/05-06 & Landscape Specification Section F10/110B
- Boundary Type 11** Proposed Retaining Wall Various height with Silver granite coping & 1100mm high Black Metal Plain Style Balustrade Refer to dwg DE007/07-08 & Landscape Specification Section F10/110B and L37/160C
- Boundary Type 11a** Proposed Retaining Wall Various height with Silver granite coping & 1100mm high Black Metal Heritage Style Balustrade Refer to Specification Section F10/110B
- Boundary Type 11b** Proposed Retaining Wall Various height with Silver granite coping Refer to Specification Section F10/110B
- Boundary Type 12** Proposed 2000mm high Rendered Wall Refer to dwg DE032/01 To Architect's Details
- Boundary Type 13** Proposed 1800mm high Glazed Privacy Screen To Architect's Details
- Boundary Type 14** 1.1m high Guard Rail to Pond Limestone Clad Upstand with Balustrade of Mild Steel Posts/Frame with Stainless Steel Vertical Tension Wire Infill. Refer to dwg DE032/02-03 & Landscape Specification Section F21/110B & L37/160D
- Boundary Type 16** Proposed 1100mm high Post & Wire Fence Refer to dwg DE032/04 & Landscape Specification Section Q40/140B

Gates

- Gate Type 1** Gate to Match with Associated Boundary Type Refer to boundary details
- Gate Type 2** Metal Gate with Custom Requirements (width, height, style) Refer to Architect's details
- Gate Type 3** New or Conservation Metal Gate to Match with Associated Architectural Metalwork Details Refer to Architect's details

Kerbs and Edges

- Edge Type 1** Proposed Limestone Kerb Nom. 250mm high, Honed, Diefurt Beige Refer to dwg DE008/01-02 & Landscape Specification Section Q10/120A
- Edge Type 2** Proposed Limestone Clad Planter Nom. 450mm high, Honed finish coping & split face finish to cladding. Refer to dwg DE008/03-05, DE009/07-08 & Landscape Specification Section F21/110B
- Edge Type 3** Proposed Limestone Clad Planter Nom. 600mm high, honed finish coping & Split Face Cladding Refer to dwg DE008/06-08 & Landscape Specification Section F21/110B
- Edge Type 4** Yorkstone Flush Edge 50x150x600mm Refer to dwg DE009/01-02 & Landscape Specification Section Q10/120B
- Edge Type 5** Granite Road Kerb to Marry into Existing 300x200x600mm Refer to dwg DE009/03 & Landscape Specification Section Q10/120C
- Edge Type 6** Aluminium Edging Refer to dwg DE009/04-05 & Landscape Specification Section Q10/200 and Q30/567
- Edge Type 7** Timber Edging Refer to dwg DE004/01 & Landscape Specification Section Q10/210A

Steps

- Proposed Landscape Steps** Refer to details & Landscape Specification Sections L37/110A, 110B, 110C, 110D, 110E, 110F, 110G, 110H
- Existing Retained Steps** Refer to Architect's specification
- Proposed Architectural Steps** Refer to Architect's details

Street Furniture

- Proposed Cycle Stands** Product: Sheffield Cycle Stand Refer to dwg DE031/02 & Landscape Specification Section Q50/210
- Proposed Benches** Product: Hurlingham Bench (allow for 3no.) Refer to dwg DE031/03 & Landscape Specification Section Q50/220
- Proposed Sculpture Locations** Sculpture Display Positions. Number positions provided as detailed. Refer to dwg DE014 & Landscape Specification F21/110C
- Proposed Removable Bollard** Product: Vekso Classic 86 removable Cast Iron Bollard Refer to dwg DE031/04 & Landscape Specification Section Q50/196
- Existing Heritage Cast Iron Bollard** Refurbished In Accordance with Architect's Conservation Specification
- Proposed Freestanding Planter Box** Product: Timber Prestige Contemporary Planter raised planter or similar and approved Refer to Landscape Specification Q31 292

Soft Landscape

- Existing tree - retained** Note: Refer to Crown Arboricultural Consultants drawings for further information
- Existing tree - Root Protection Area** Note: Refer to Crown Arboricultural Consultants drawings for further information
- Existing tree planting removed** Note: Refer to Refer to Crown Arboricultural Consultants drawings for further information
- Proposed Large Tree Planting** Product: Standard Tree with 2.5m clear stem Size/Spec: Refer to plant schedule for details Note: All trees are to be tagged by landscape architect prior to delivery. Refer to Specification Section Q31
- Proposed Pleached Tree Planting** Product: Pleach trained Tree with 2m clear stem Size/Spec: Refer to plant schedule for details Note: All trees are to be tagged by landscape architect prior to delivery. Refer to Specification Section Q31
- Proposed Multi-Stem Tree Planting** Product: Multi Stem Tree Size/Spec: Refer to plant schedule for details Note: All trees are to be tagged by landscape architect prior to delivery. Refer to Specification Section Q31
- Proposed Columnar Tree Planting** Product: Columnar Tree Size/Spec: Refer to plant schedule for details Note: All trees are to be tagged by landscape architect prior to delivery. Refer to Specification Section Q31
- Proposed Shrub & Groundcover Planting** Refer to Planting Plans & Schedules Refer to Specification Section Q31
- Proposed Ornamental Hedge Planting** Refer to Planting Plans & Schedules Refer to Specification Section Q31
- Proposed Bulb Drift Planting** Refer to Planting Plans & Schedules Refer to Specification Section Q31
- Proposed Marginal/Aquatic Planting** Refer to dwg 9300-DRG-DE033 Pond Planting Plan & Planting Schedule Refer to Specification Section Q31
- Proposed Grass** Daisy Lawn Turf as specified Refer to Specification Section Q30/400
- Proposed Shade Tolerant Wild Flower Grass** Product: EW1 Woodland Wildflower Grass seed mixture Supplier: Emorsgate or similar and approved. Refer to dwg DE016 & Landscape Specification Section Q30/312
- Proposed Biodiverse Roof Planting** Bauder roof system and Flora 3 and Flora 5 wildflower seed as specified Refer to dwg DE016 & Landscape Specification Section Q30/312A and Q37/130A
- Proposed Bark Mulch Collar Around Base of Tree** Refer to Specification Section Q28/845

Drainage and Services

- For location reference only. Features may not be limited to locations shown on landscape plans; eg gully points beneath pedestal suspended pavement. Refer to appropriate Architectural and Engineering drawings.
- Dry Riser Location** Refer to Engineer's Details. Refer to Architect's Details.
- Drainage Gully - In Hard Landscape** Refer to Engineer's Details
- Drainage Channel** Brick Slot with Recessed Access Cover or Grated Channel Refer to Engineer's Details
- CCTV Post** PTZ CCTV Camera, Post Mounted Refer to Engineer's Details

Levels

- Existing Spot Elevation**
- Proposed Spot Elevation**
- Proposed Gradient/Cross Fall**

Lighting

- For location purposes only. Refer to Engineer's Specification & Details** Existing Lamp Posts and Street Lighting Columns to be Retained Refer to dwg DE018/06
- Existing Street Lighting Column to be Relocated Refer to dwg DE018/07 Refer to Engineer's details
- Proposed Tree Up-Lighter Refer to dwg DE029/01
- Proposed 600mm High Bollard Light Refer to dwg DE02905-06
- Proposed Ground Recessed Uplight Refer to dwg DE029/02
- Proposed Wall Recessed Light Refer to dwg DE029/02-03
- Proposed Recessed Step Light Refer to dwg DE013/02
- Proposed 4m high Column Light Refer to dwg DE029/07

fabrik

Lenten House
 16 Lenten Street
 Alton
 Hampshire
 GU34 1HG
 T: 01420 593250
 E: alton@fabrikuk.com
 W: www.fabrikuk.com

MOUNT ANVIL	
NO COMMENT	A STATUS A
MINOR COMMENTS	B STATUS B
REVISED DRAWING TO FOLLOW	C STATUS C- REJECTED
DATE:	
REVIEWED BY:	

T5	17.05.2017	Addition of Planter Box. Amendment of notes to Boundary types 9 to 11b.	MF	NB
T4	13.04.2017	Addition of paving PT6b. Issued for Tender	NB	JR
T3	16.03.2017	Specification notes for G1 and G3 updated. Issued for Tender	NB	JR
T2	25.11.2016	Sheet updated. Issued for Tender	HvK	NB
T1	03.10.2016	Minor amends Issued for Tender	HvK	NB
P02	15.07.2016	Work in Progress Issued for Information	HvK	NB
P01	26.04.2016	Work in Progress Issued for Information	HvK	NB
No.	Date	Reason	HvK	NB
Revisions				
External References:				
• -				

Project
Kidderpore Avenue, Hampstead for Mount Anvil

Drawing
Landscape Legend

Scale
1:100 @ A1

Date
Mar '16

Checked
NB

Drawn
HvK

Drawing No.
9300-DRG-GN005

Revision
T5

- Preliminary
- Issued for Planning Approval
- Issued for Construction
- Issued for Design/Information
- Issued for Tender
- As Built

Drawing sheet size - A1 Copyright Reserved ©

Notes
 1. This drawing is the property of fabrik ltd. It must not be copied or reproduced without written consent.
 2. Only figured dimensions are to be taken from this drawing. All contractors must visit site and be responsible for taking and checking all dimensions related to the works shown on the drawing.

TREES	Number	Species	Girth	Height	Specification	Density
	2 No.	Amelanchier lamarckii		3.5-4.0m	Multi-Stemmed :7 brks :RB	Counted
	1 No.	Betula pendula	20-25cm	350-425cm	3x :RB :Clear Stem 175-200 :5 brks	Counted
	8 No.	Betula pendula (Multi-Stemmed)	20-25cm	250-300cm	Multi-Stemmed :7 brks :RB	Counted
	4 No.	Betula utilis jacquemontii	20-25cm	350-425cm	RB :Clear Stem min. 200	Counted
	1 No.	Betula utilis jacquemontii (m. stem)		350-400cm	Multi-Stemmed :RB	Counted
	6 No.	Carpinus betulus (pleached or boxed)	20-25cm	450-625cm	Pleached :RB :Clear Stem min. 200	Counted
	1 No.	Davidia involuocrata	20-25cm	5.0-6.0m	Semi-Mature :Clear Stem min. 200 :RB	Counted
	1 No.	Prunus 'Amanogawa'		2.5-3.0m	Standard	Counted
	4 No.	Pyrus calleryana 'Capital'	20-25cm	450-625cm	Semi-Mature :Clear Stem min. 200 :RB	Counted
	2 No.	Pyrus calleryana 'Chanticleer'	20-25cm	450-625cm	Semi-Mature :Clear Stem min. 200 :RB	Counted
Total :30 No.						

SHRUBS	Number	Species	Height	Pot Size	Specification	Density
	49 No.	Buxus sempervirens	60-80cm	25L	Bushy :C: Topiary Ball	Counted
	31 No.	Buxus sempervirens	60-80cm	15L	Bushy :C: Topiary Cube	Counted
	310 No.	Camellia japonica 'Silver Anniversary'	40-60cm	10L	Bushy :8/9 brks :C	5/m ²
	18 No.	Camellia japonica 'Alba Plena'	40-60cm	10L	Bushy :8/9 brks :C	5/m ²
	64 No.	Ceratostigma plumbaginoides	40-60cm	5L	Bushy :5/7 brks :C	7/m ²
	97 No.	Ceratostigma willmottianum	40-60cm	5L	Bushy :5/7 brks :C	7/m ²
	759 No.	Cornus alba 'Elegantissima'	80-100cm		Branched :5/7 brks :RB	7/m ²
	1 No.	Corylus avellana 'Cortorta'	175-200cm	As Supplied	Containerised:Multistem : 500L	Counted
	26 No.	Elaeagnus ebbingei	60-80cm	5-7.5L	Branched :5/7 brks :C	5/m ²
	33 No.	Elaeagnus ebbingei 'Gilt Edge'	60-80cm	5-7.5L	Branched :5/7 brks :C	5/m ²
	417 No.	Euonymus fortunei 'Emerald Gaiety'	30-40cm (D)	5-7.5L	Bushy :8/9 brks :C	7/m ²
	75 No.	Hebe 'Red Edge'	30-40cm (D)	5-7.5L	Bushy :7 brks :C	7/m ²
	170 No.	Hebe rakaiensis	30-40cm	5-7.5L	Bushy :7 brks :C	7/m ²
	638 No.	Hydrangea paniculata	60-80cm	10L	Branched :7 brks :C	7/m ²
	247 No.	Lavandula angustifolia 'Hidcote'	40-50cm	10L	Bushy :8/9 brks :C	9/m ²
	112 No.	Lavandula stoechas	40-60cm	10L	Bushy :8/9 brks :C	9/m ²
	21 No.	Mahonia aquifolium 'Apollo'	45-60cm	10L	Branched :C	7/m ²
	537 No.	Pachysandra terminalis 'Green Carpet'	30-40cm	3L	Several shoots :6/9 brks :C	9/m ²
	211 No.	Paroskia atriplicifolia 'Blue Spire'	20-30cm	2L	Bushy :3 brks :C	4/m ²
	152 No.	Rosmarinus officinalis 'Miss Jessopp's Upright'	40-60cm	3L	C :Bushy	7/m ²
	47 No.	Sambucus nigra 'Black Beauty'	40-60cm	3L	Bushy :C	5/m ²
	81 No.	Santolina rosmarinifolia 'Lemon Fizz'	30-40cm	5-7.5L	Bushy :7 brks :C	6/m ²
	183 No.	Sarcococca confusa	30-40cm	5-7.5L	Bushy :5/7 brks :C	5/m ²
	935 No.	Sarcococca hookeriana digyna	30-40cm	5-7.5L	Bushy :5/7 brks :C	5/m ²
	404 No.	Skimmia confusa 'Kew Green'	30-40cm	3L	Bushy :3 brks :C	7/m ²
	71 No.	Syringa vulgaris 'Mme Lemoine'	40-60cm	5L	Bushy :5/7 brks :C	5/m ²
	91 No.	Viburnum bodnantense 'Dawn'	40-60cm	10L	Bushy :7 brks :C	4/m ²
	359 No.	Viburnum davidii	40-60cm	10L	Bushy :7 brks :C	4/m ²
	108 No.	Viburnum opulus	40-60cm	10L	Bushy :7 brks :C	4/m ²
	438 No.	Viburnum tinus 'French White'	40-60cm	10L	Bushy :7 brks :C	4/m ²
	1 No.	Viburnum x bodnantense 'Charles Lamont'	175-200cm	35L	Free Form	Counted
	190 No.	Vinca minor 'Alba'	20-30cm	5-7.5L	Bushy :C	5/m ²
	67 No.	Vinca minor 'Bowles' Variety'	20-30cm	5-7.5L	Bushy :C	5/m ²
Total :6943 No.						

HEDGING	Number	Species	Height	Pot Size	Specification	Density
	91 No.	Buxus sempervirens	90-120cm		BUXUS READY HEDGE TYPE 1 :Containerised : Finished height 120cm Flat top	1/m
	144 No.	Buxus sempervirens	30-40cm		BUXUS READY HEDGE TYPE 2 : trough 1100 x H 90-40 W 15-18cm. Finished height 75cm flat top	1/m
	11 No.	Crataegus monogyna	120-150	BR		6/m
	68 No.	Ilex aquifolium	120-150		ILEX READY HEDGE TYPE 1 :finished height 160cm flat top	1/m
	9 No.	Prunus spinosa	120-150	BR		6/m
	154 No.	Taxus baccata	90-120cm		TAXUS READY HEDGE TYPE 1 : 1m trough:Finished height 160cm chamfered top.	1/m
	9 No.	Viburnum opulus	120-150	BR		6/m
Total :486 No.						

HERBACEOUS	Number	Species	Pot Size	Specification	Density
	20 No.	Achillea 'Credo'	2L	C :Full Pot	6/m ²
	15 No.	Achillea 'Walter Finke'	2L	C :Full Pot	Counted
	54 No.	Achillea 'Walter Finke'	2L	C :Full Pot	6/m ²
	203 No.	Allium 'Purple Sensation'	2L	C :Full Pot	Counted
	186 No.	Allium sphaerocephalon	2L	C :Full Pot	Counted
	188 No.	Anthriscus sylvestris	2L	C :Full Pot	Counted
	31 No.	Anthriscus sylvestris	2L	C :Full Pot	7/m ²
	7 No.	Asarum europaeum	2L	C :Full Pot	9/m ²
	44 No.	Aster frikartii 'Monch'	2L	C :Full Pot	9/m ²
	29 No.	Astrantia major	2L	C :Full Pot	9/m ²
	158 No.	Astrantia major	2L	C :Full Pot	Counted
	14 No.	Bergenia cordifolia	3L	C :Full Pot	9/m ²
	57 No.	Crocus 'Emberglow'	2L	C :Full Pot	4/m ²
	402 No.	Digitalis purpurea albiflora	2L	C :Full Pot	Counted
	98 No.	Digitalis purpurea albiflora	2L	C :Full Pot	9/m ²
	85 No.	Echinacea 'Flame Thrower'	3L	C :Full Pot	Counted
	982 No.	Euphorbia amygdaloides robbiae	5L	C:Full Pot	9/m ²
	180 No.	Euphorbia characias wulfenii	2L	C :Full Pot	9/m ²
	16 No.	Geranium macrorrhizum	3L	C :Full Pot	7/m ²
	31 No.	Geranium sanguineum	3L	C :Full Pot	7/m ²
	88 No.	Helleborus foetidus	3L	C :Full Pot	7/m ²
	22 No.	Paeonia lactiflora 'Duchesse de Nemours'	3L	3 Buds :C :Full Pot	9/m ²
	79 No.	Verbena bonariensis	3L	C :Full Pot	Counted
Total :2989 No.					

CLIMBERS	Number	Species	Height	Pot Size	Specification	Density
	7 No.	Clematis armandi	100-150cm	15-20L	Several Shoots :5 brks : 3 x tr. :Framed	Counted
	4 No.	Hedera colchica 'Dentata Variegata'	150-200cm	15-20L	Several Shoots :5 brks :Caned; 3 x tr.:Tripod	Counted
	38 No.	Hedera helix 'Glacier'	150-200cm	15-20L	Several Shoots :5 brks :Caned:Tripod	8/m ²
	272 No.	Hedera helix hibernica	150-200cm	15-20L	Several Shoots :5 brks :Caned:Tripod	8/m ²
Total :321 No.						

BULBS	Number	Species	Specification	Density
	55 No.	Anemone nemorosa	Grade 6/7	16/m ²
	201 No.	Crocus mix	Grade 6/7	16/m ²
	23 No.	Fritillaria meleagris	Grade 5/6	Counted
	250 No.	Galanthus nivalis	Grade 6/7	16/m ²
	27 No.	Galanthus nivalis	Grade 5/6	Counted
	201 No.	Hyacinthoides non scripta	Grade 6/7	16/m ²
	91 No.	Hyacinthoides non scripta	Grade 5/6	Counted
	150 No.	Narcissus 'February Gold'	Grade 6/7	16/m ²
	150 No.	Narcissus 'Tete a Tete'	Grade 6/7	16/m ²
Total :1148 No.				

FERNS	Number	Species	Pot Size	Specification	Density
	135 No.	Blechnum spicant	5-7.5L	C :Full Pot	9/m ²
	126 No.	Dryopteris affinis 'Crispa'	5-7.5L	Full Pot	5/m ²
	3 No.	Dryopteris affinis 'Crispa'	10L	Full Pot	Counted
	4 No.	Polystichum setiferum	5-7.5L	C :Full Pot	Counted
	461 No.	Polystichum setiferum	5-7.5L	C :Full Pot	9/m ²
	6 No.	Polystichum setiferum	10L	Full Pot	Counted
Total :735 No.					

GRASSES	Number	Species	Pot Size	Specification	Density
	1725 No.	Hakonechloa macra 'Aureola'	2L	C :Full Pot	9/m ²
	146 No.	Luzula nivea	2L	C :Full Pot	9/m ²
Total :1871 No.					

G1 DAISY LAWN GRASS SPECIES MIX (WFT26)

Achillea millefolium	Yarrow
Trifolium pratense	Wild Red Clover
Origanum vulgare	Wild Marjoram
Clinopodium vulgare	Wild Basil
Trifolium dubium	Suckling Clover
Trifolium repens	White Clover
Campanula rotundifolia	Harebell
Sanguisorba minor	Salad Burnet
Galium verum	Lady's Bedstraw
Ranunculus acris	Meadow Buttercup
Lathyrus pratensis	Meadow Vetchling
Prunella vulgaris	Selfheal
Galium mollugo	Smooth bedstraw
Medicago lupulina	Black medick
Centaura nigra	Common Knapweed
Lotus corniculatus	Birdsfoot Trefoil
Lolium perenne	Dwarf cultivar
Anthoxanthum odoratum	Sweet vernal grass
Festuca rubra subsp. commutata	Chewing's Fescue
Festuca rubra trichophylla	Slender creeping red fescue
Phleum bertolonii	Smaller Cat's Tail
Poa pratensis	Common Meadow grass
Stachys officinalis	Betony
Bellis perennis	Daisy

G2 WOODLAND WILDFLOWER LAWN (EW1) WILD FLOWERS

%	Latin name	Common name
3	Alliaria petiolata	Garlic Mustard
1	Allium ursinum	Ramsons
1.2	Betonica officinalis	Betony
1	Digitalis purpurea	Foxglove
2	Filipendula ulmaria	Meadowsweet
1	Galium album	Hedge Bedstraw
3	Geum urbanum	Wood Avens
2.6	Hyacinthoides non-scripta	Bluebell
0.4	Hypericum hirsutum	Hairy St John's-wort
0.2	Primula vulgaris	Primrose
1	Prunella vulgaris	Selfheal
1.4	Silene dioica	Red Campion
0.2	Silene flos-cuculi	Ragged Robin
1	Stachys sylvatica	Hedge Woundwort
1	Teucrium scorodonia	Wood Sage
20		

%	Latin name	Common name
10	Agrostis capillaris	Common Bent (w)
2	Anthoxanthum odoratum	Sweet Vernal-grass (w)
7	Brachypodium sylvaticum	False Brome (w)
28	Cynosurus cristatus	Crested Dogtail
1	Deschampsia cespitosa	Tufted Hair-grass (w)
20	Festuca rubra	Slender-creeping Red-fescue
12	Poa nemoralis	Wood Meadow-grass

G3 BIODIVERSE ROOF SEED MIXES

Pavilion House - Bauder Flora 5 Seed Mix, refer to Landscape Specification.
 Skeel Library - Bauder Flora 3 Seed Mix, refer to Landscape Specification.

POND PLANTING - REFER TO DWG 9300 - DRG-DE033 POND PLANTING PLAN.

SHRUBS	Species	Height	Pot Size	Specification	Density	Number
	Cornus alba 'Sibirica'	40-60cm	5L	C :Branched	5/m ²	11 No.

FERNS	Species	Pot Size	Specification	Density	Number
	Polystichum setiferum	10L	Full Pot	3/m ²	5 No.

MARGINAL / AQUATICS	Species	Pot Size	Specification	Density	Number
Nymphaea peltata	2L	Well Rooted		Counted	3 No.
Nymphaea alba	2L	Well Rooted		Counted	5 No.
Myosotis scorpioides	2L	Well Rooted		7/m ²	9 No.
Iris pseudacorus	3-3.5L	Well Rooted		5/m ²	11 No.
Geum rivale	2L	Well Rooted		7/m ²	8 No.
Calla palustris	2L	Bunched and Weighted	:Well Rooted	7/m ²	11 No.
Filipendula ulmaria	3-3.5L	Well Rooted		7/m ²	12 No.
Lythrum salicaria	3-3.5L	Well Rooted		7/m ²	8 No.

fabrik

Lenten House
 16 Lenten Street
 Alton
 Hampshire
 GU34 1HG
 T : 01420 593250
 E : alton@fabrikuk.com
 W : www.fabrikuk.com

MOUNT ANVIL

NO COMMENT	A	STATUS A
MINOR COMMENTS	B	STATUS B
REVISED DRAWING TO FOLLOW	C	STATUS C- REJECTED

DATE: _____
 REVIEWED BY: _____

T6	16.06.2017	Planting updated in line with revised plans. Issued for Tender.	ST	NB
T5	17.05.2017	Planting updated in line with revised plans. Issued for Tender.	MF	NB
T4	25.04.2017	Minor updates according with revised plans. Issued for Tender.	ST	NB
T3	10.03.2017	Drawing updated. Issued for Tender.	ST	JR
T2	25.11.2016	Updated schedule minor amends Hedge schedule added	HVK	NB
T1	03.10.2016	Issued for Tender	HVK	NB
P02	15.07.2016	Work in Progress issued for Information	HVK	NB
P01	25.04.2016	Work in Progress issued for Information	HVK	NB
No.	Date	Reason	Drawn	Checked

Revisions: _____
 External References: _____

Project
Kidderpore Avenue, Hampstead for Mount Anvil

Drawing
Planting Schedule

Scale	Date	Checked	Drawn
NTS @ A1	April '16	NB	HvK
Drawing No.	Revision		
9300-DRG-GN006	T6		

Drawing sheet size - A1 Copyright Reserved ©

<input type="checkbox"/> Preliminary	<input type="checkbox"/> Issued for Design/Information
<input type="checkbox"/> Issued for Planning Approval	<input checked="" type="checkbox"/> Issued for Tender
<input type="checkbox"/> Issued for Construction	<input type="checkbox"/> As Built

Notes: To be read in conjunction with 9300-DRG-GN005 Landscape Legend, 9300-DRG-PE021-026 Soft Landscape General Arrangement Plans, 9300-DRG-DE033 Pond Planting Plan



fabrik

Lenten House
16 Lenten Street
Alton
Hampshire
GU34 1HG

T: 01420 593250
E: alton@fabrikuk.com
W: www.fabrikuk.com

MOUNT ANVIL	
NO COMMENT	A STATUS A
MINOR COMMENTS	B STATUS B
REVISED DRAWING TO FOLLOW	C STATUS C- REJECTED
DATE:	
REVIEWED BY:	

T2	10.03.17	Updated for information to accompany tender pack
T1	03.10.16	Issued for Tender
No.	Date	Reason
Revisions		

External References:

NY JR
HvK NB
Drawn Checked

Project
Kidderpore Avenue, Hampstead
for Mount Anvil

Drawing
Illustrative Landscape Masterplan

Scale
1:250 @ A1

Date
Apr '16

Checked
NB

Drawn
HvK

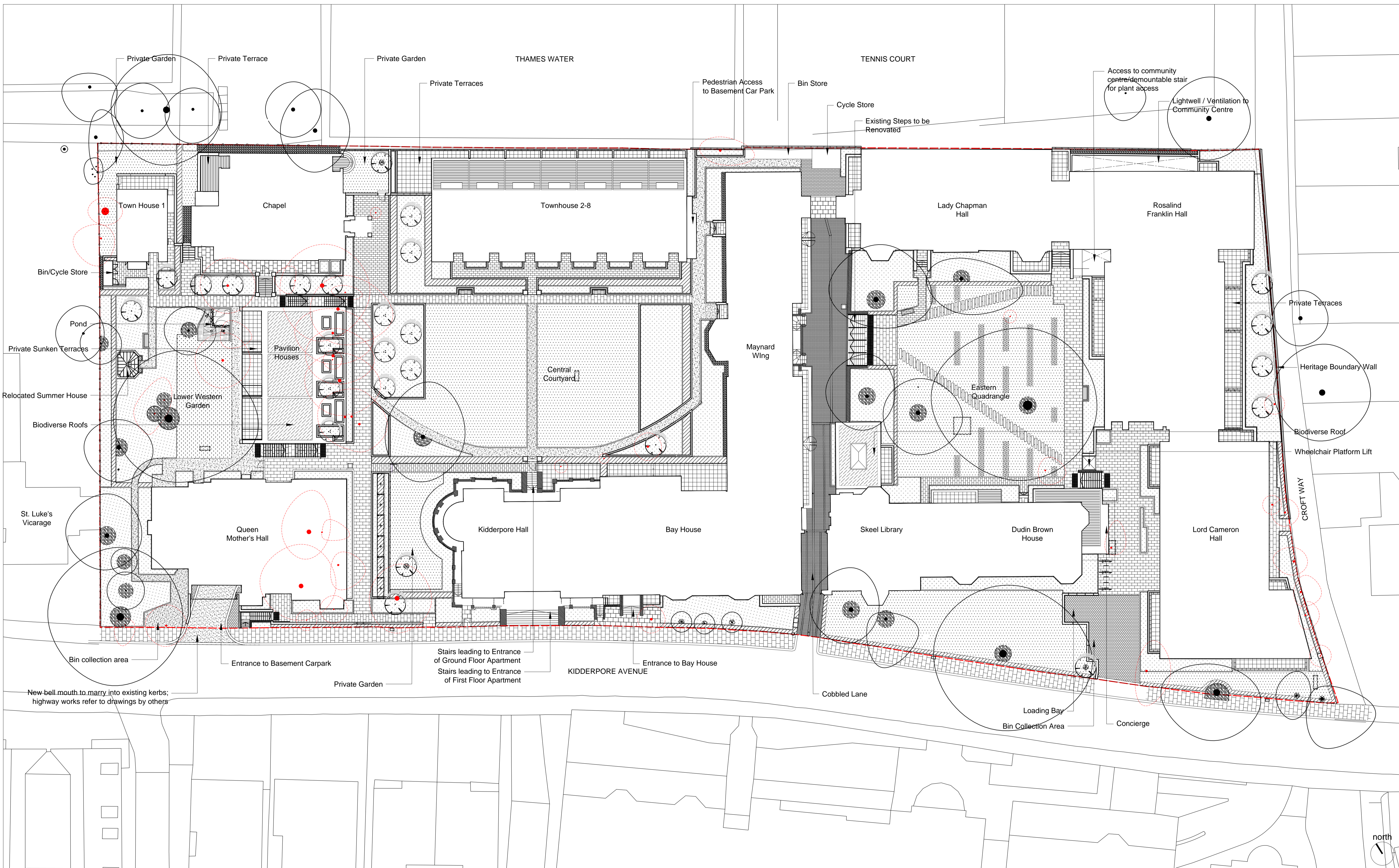
Drawing No.
9300-DRG-PE001

Revision
T2

- | | |
|---|---|
| <input type="checkbox"/> Preliminary | <input checked="" type="checkbox"/> Issued for Design/Information |
| <input type="checkbox"/> Issued for Planning Approval | <input type="checkbox"/> Issued for Tender |
| <input type="checkbox"/> Issued for Construction | <input type="checkbox"/> As Built |

Drawing sheet size - A1

Copyright Reserved ©



fabrik

Lenten House
16 Lenten Street
Alton
Hampshire
GU34 1HG

T: 01420 593250
E: alton@fabrikuk.com
W: www.fabrikuk.com

MOUNT ANVIL

NO COMMENT	A	STATUS A
MINOR COMMENTS	B	STATUS B
REVISED DRAWING TO FOLLOW	C	STATUS C-REJECTED

DATE:
REVIEWED BY:

T3	25.04.17	Minor updates to site layout; sculpture locations, QMH ramp. Issued for Tender	NB	JR
T2	10.03.17	Sheet updated. Issued for Tender	NB	JR
T1	03.10.16	Issued for Tender	HvK	NB
No.	Date	Reason	Drawn	Checked

Revisions

External References:

- fabrik\Working\Auto-CAD\2280 working 100.dwg
- Tree Survey\recvd-15-04-08\09186 Draft Impact Assessment rev 5fab.dwg
- Architect\Recvd-14-11-26\157780 OS map.dwg

Project
**Kidderpore Avenue, Hampstead
for Mount Anvil**

Drawing
Landscape Site Plan

Scale
1:250 @ A1

Date
Apr '16

Checked
NB

Drawn
HvK

Drawing No.
9300-DRG-PE002

Revision
T3

<input type="checkbox"/> Preliminary	<input type="checkbox"/> Issued for Design/Information
<input type="checkbox"/> Issued for Planning Approval	<input type="checkbox"/> Issued for Tender
<input type="checkbox"/> Issued for Construction	<input type="checkbox"/> As Built

Drawing sheet size - A1
Copyright Reserved ©