



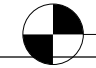

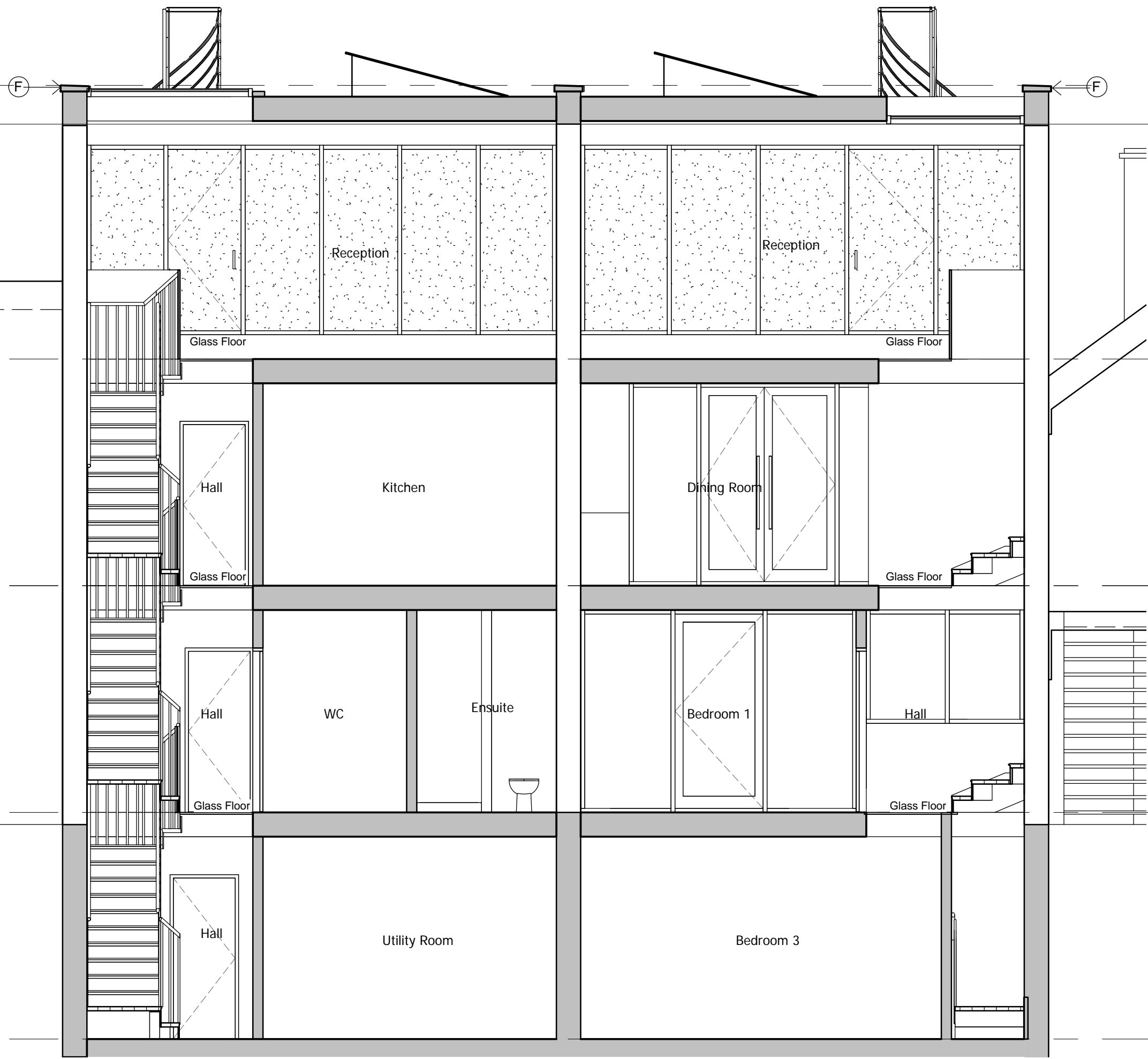


-  Parapet
30280
-  Roof
30140
-  Level 02
26900
-  Level 01
24100
-  Level 00
21300
-  Level B1
18500



- ### Materials List
- A Brickwork
 - B Flat Metal Panel
 - C Stainless Steel Woven Mesh Panel
 - D Stainless Steel Woven Mesh Gates
 - E Aluminium PPC Framed Windows
 - F Precast Concrete Coping
 - G Aluminium PPC fascia
 - H Stainless Steel Tubular Handrail
 - J -
 - K Galv Access Stair
 - L Aluminium PPC framed Windows Obscure Glazed
 - M Aluminium Framed patent Roof Glazing

Rev	Description	Date
P2	Updates following Local Authority comments	10/01/2013
P1	Planning Application	13/11/2012



BUCHANAN ASSOCIATES
 ARCHITECTS • INTERIOR DESIGNERS

13 Grosvenor Gardens
 London SW1W 0RD
 T: 020 7592 7347
 F: 020 7828 5663
 email: mail@buchananarchitects.co.uk

Client
Queens Gate Holdings Ltd

Project
**23-24 King's Mews
 London
 WC1N 2JB**

Title
Proposed Section DD - No 23 & 24

Scale
 1 : 50 @ A3

Date
 23/10/2012

Project No
 0645

Drawing No
 L(PL) 022

Rev
 P2

