

No 24 King's Mews

No 23 King's Mews

The glass in the panels at top level will be provided with a ceramic tint to limit light transmittance to a maximum of 50%

© Buchanan Associates Architects Ltd.  
The information contained in this drawing is the copyright of Buchanan Associates Architects Ltd. and must not be used in whole or in part without the express written approval of Buchanan Associates Architects Ltd.

Materials List

- A Brickwork
- B Flat Metal Panel
- C Stainless Steel Woven Mesh Panel
- D Stainless Steel Woven Mesh Gates
- E Aluminium PPC Framed Windows
- F Precast Concrete Coping
- G Aluminium PPC fascia
- H Stainless Steel Tubular Handrail
- J -
- K Galv Access Stair
- L Aluminum PPC framed Windows Obscure Glazed
- M Aluminium Framed patent Roof Glazing

Parapet 30280

Roof 30140

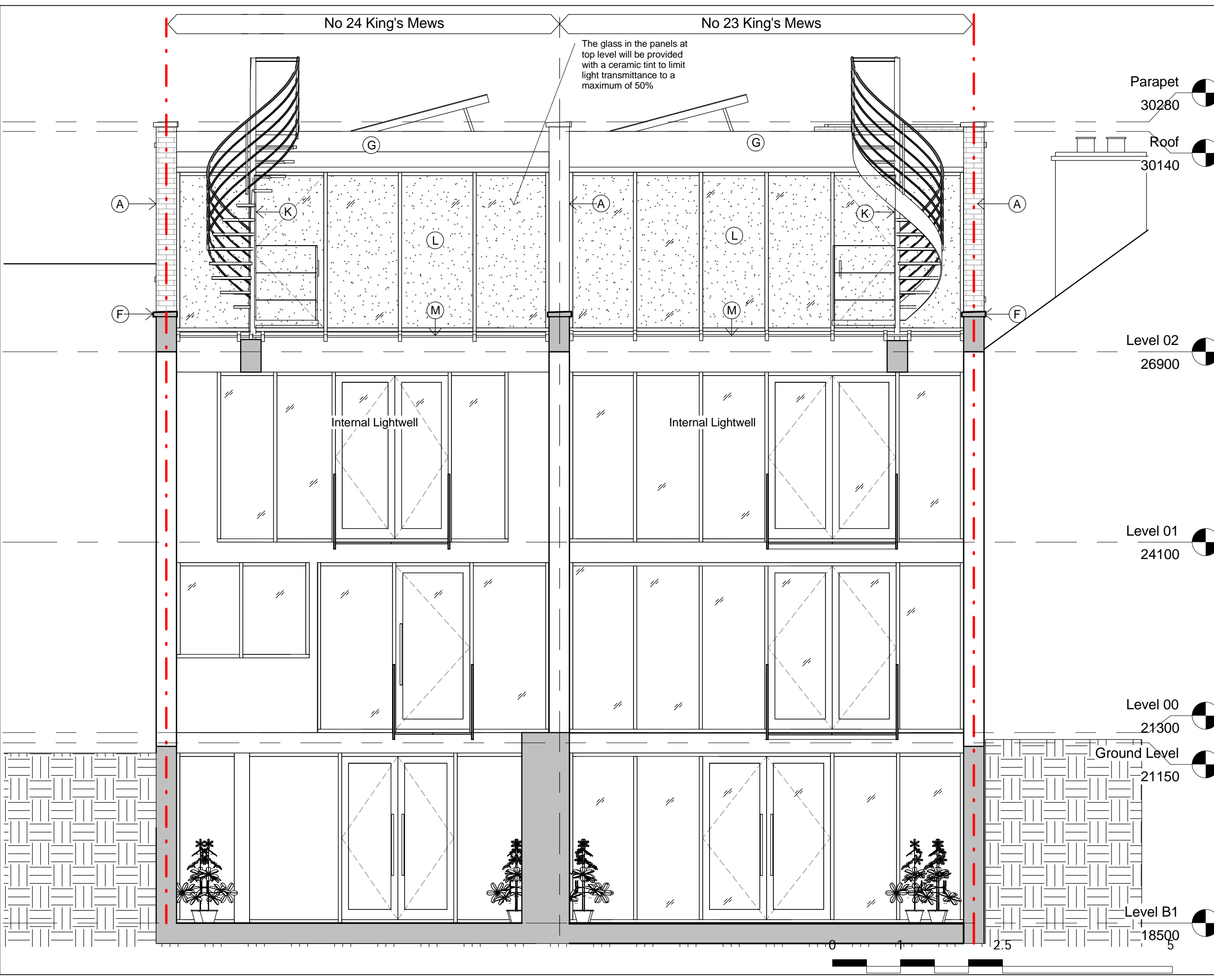
Level 02 26900

Level 01 24100

Level 00 21300

Ground Level 21150

Level B1 18500



P2	Updates following Local Authority comments	10/01/2013
P1	Planning Application	13/11/2012
Rev	Description	Date

**BUCHANAN ASSOCIATES**  
ARCHITECTS • INTERIOR DESIGNERS

13 Grosvenor Gardens  
London SW1W 0RD  
T: 020 7592 7347  
F: 020 7828 5663  
email: mail@buchananarchitects.co.uk

Client  
Queens Gate Holdings Ltd

Project  
23-24 King's Mews  
London  
WC1N 2JB

Title  
Proposed East Elevation

Scale  
1 : 50 @ A3

Date  
23/10/2012

Project No 0645 Drawing No L(PL) 011 Rev P2