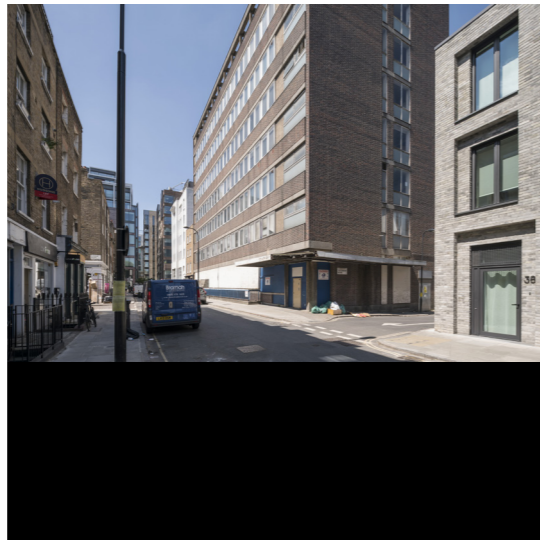


---

# COMPOSITE

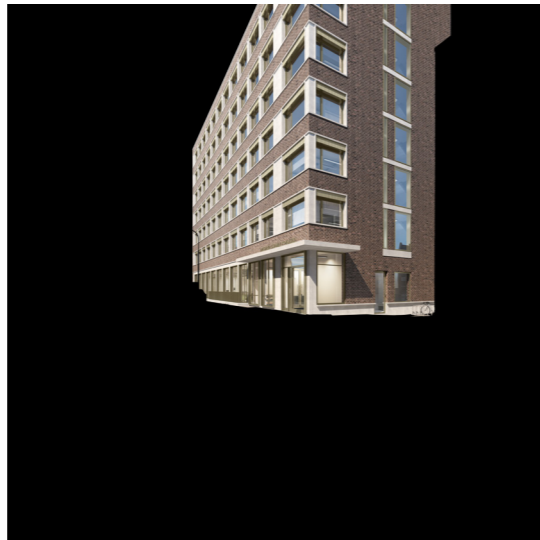
## Compositing The Scene



01. BACKGROUND PHOTOGRAPHY - BASIS FOR COMPOSITE



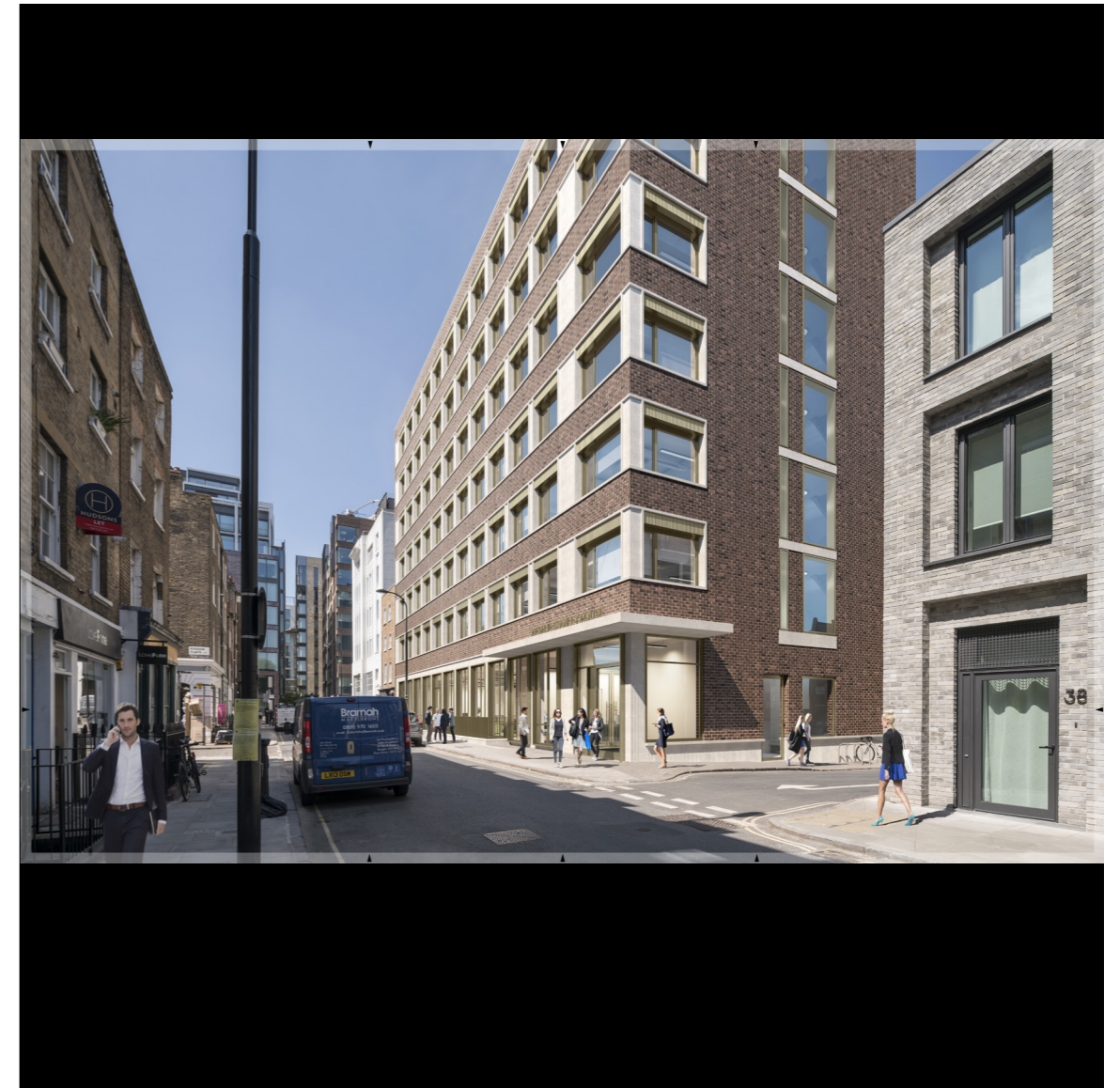
02. OCCLUDING OBJECTS ISOLATED



03. BASE RENDER OF CANDIDATE SCHEME



04. BASE RENDER OF CANDIDATE SCHEME INTEGRATED



05. COMPLETED IMAGE

The final stage of the verified image process is the composite.

This is where the scheme is integrated into the photography to the desired level of detail.

With AVR Types 1 and 2, the identification of any object/building occluding the mass and then indication of the mass itself.

For AVR Types 3 and 4, where the scheme needs to be considered in detail, more complex rendering techniques are employed.

In the case of the photorealistic AVR, textures are applied to represent the finished materials and the lighting is carefully matched to create a 'photoreal' finish. The photographer's notes from the shoot day are used to support this.

Further detail may be added to a photorealistic AVR such as the addition of people and trees.

INK

WEAREINK LTD 190A NEW NORTH ROAD LONDON N1 7BJ  
E.HELLO@WORKWITHINK.CO.UK T. 020 7193 5300

COMPANY REG NO. 9473109 VAT NO. GB 985 1916 77