

EXTENT OF EXISTING BUILDING      EXTENT OF NEW BUILD

EIGHTH FLOOR  
FFL = +54,950 AOD

SEVENTH FLOOR  
FFL = +50,960 AOD

SIXTH FLOOR  
FFL = +47,810 AOD

FIFTH FLOOR  
FFL = +44,360 AOD

FOURTH FLOOR  
FFL = +41,220 AOD

THIRD FLOOR  
FFL = +8,030 AOD

SECOND FLOOR  
FFL = +38,820 AOD

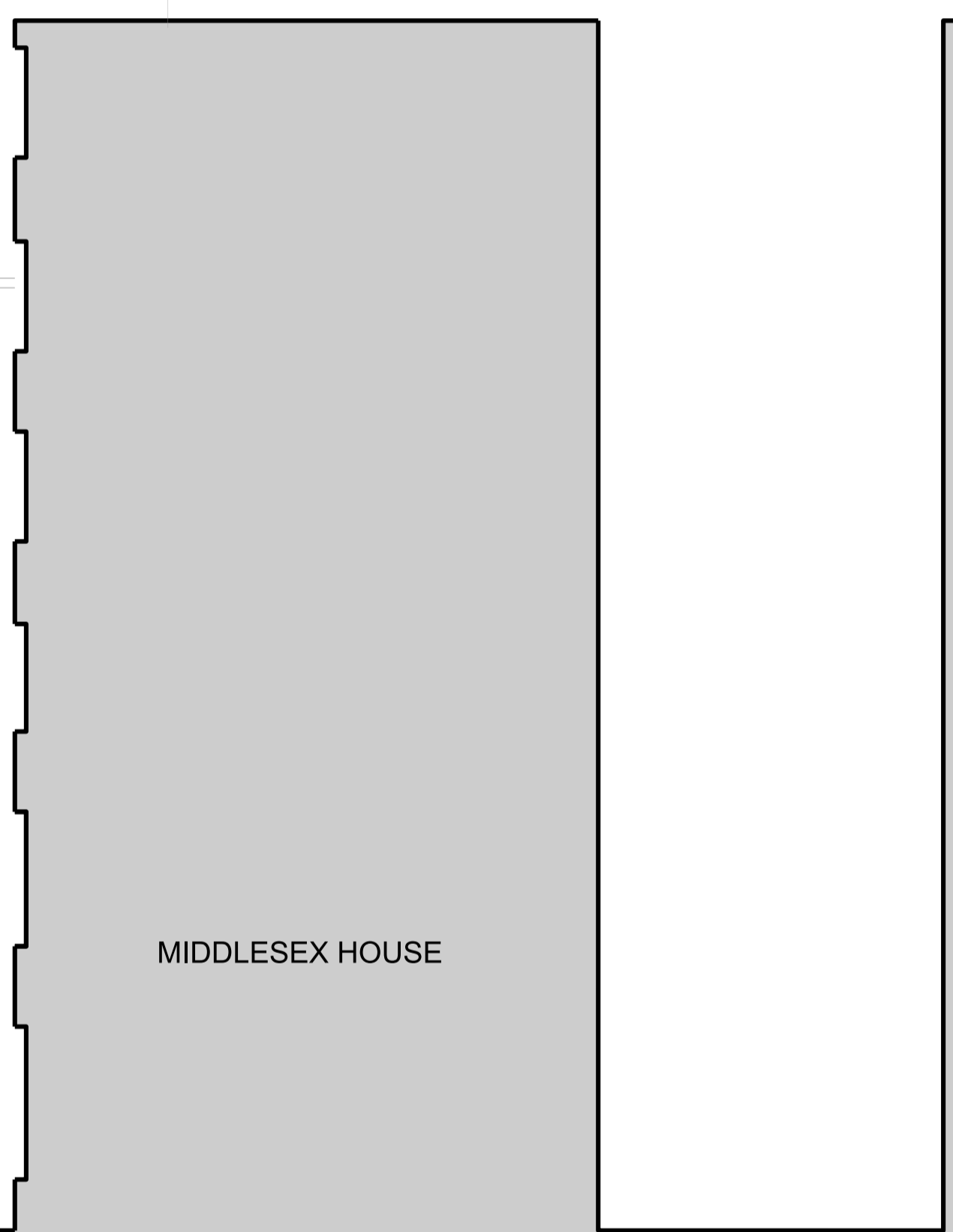
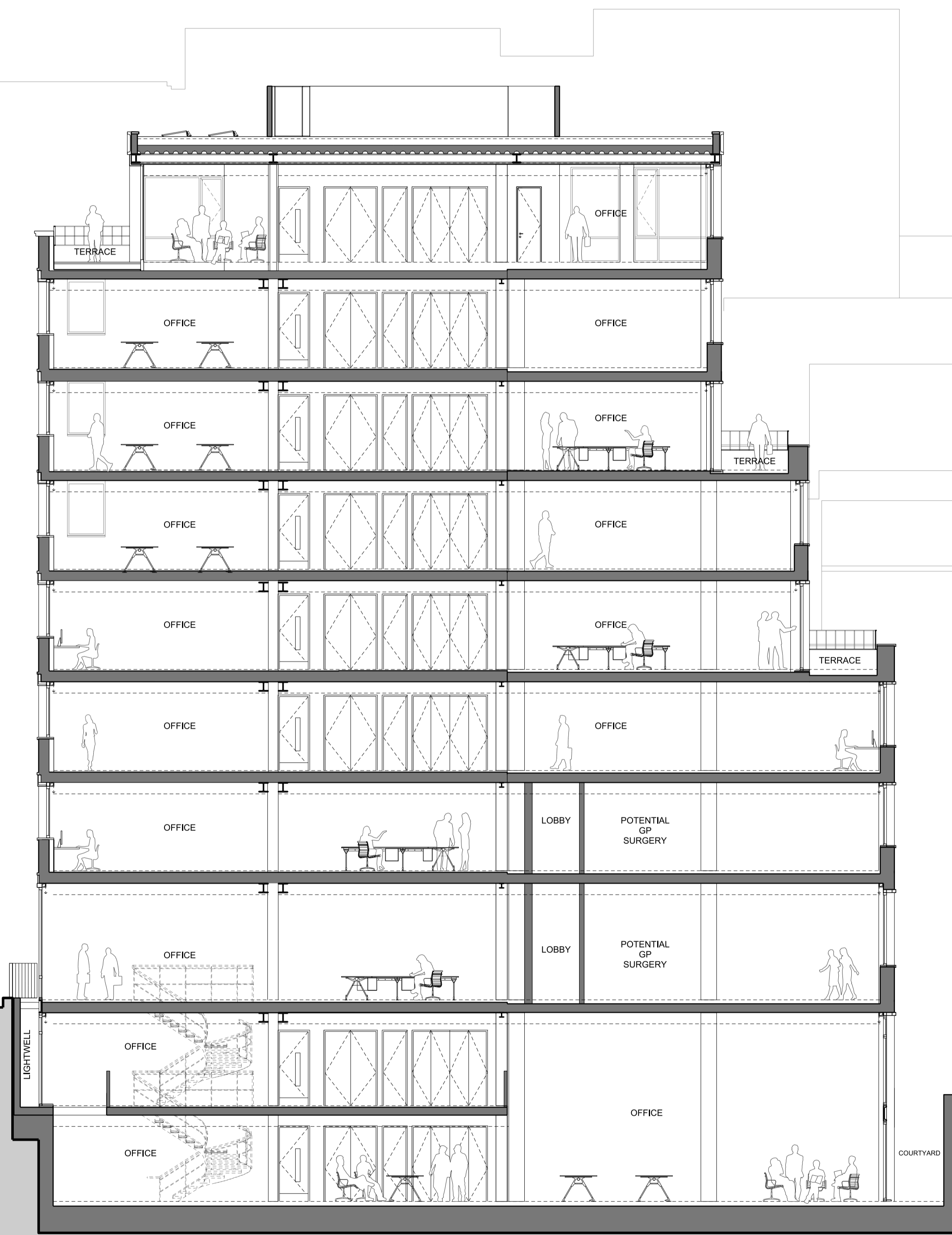
FIRST FLOOR  
FFL = +31,840 AOD

TOTTENHAM STREET

GROUND FLOOR  
FFL = +27,540 AOD

BASEMENT  
FFL = +24,180 AOD

LOWER BASEMENT  
FFL = +21,140 AOD



KEY

	Proposed
	Existing

REV DATE

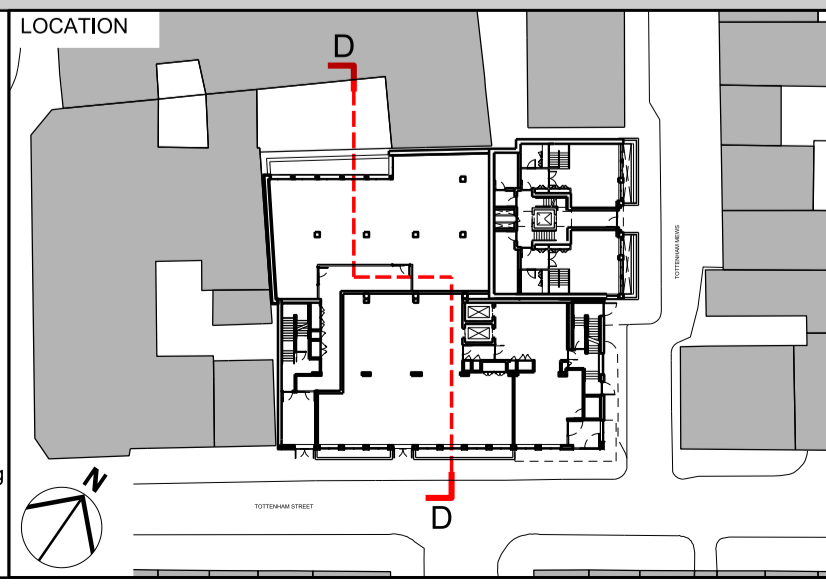
P01	21/07/17	Issue for Planning
-----	----------	--------------------

CONSULTANTS

CLIENT:	WESTBROOK PARTNERS
CONTRACTOR:	-
STRUCTURAL ENGINEER:	HEYNE TILLET STEEL
MECHANICAL ENGINEER:	GREEN BUILD DESIGN
COST CONSULTANT:	CORE FIVE
PROJECT MANAGER:	HUSH PROJECT MANAGEMENT&CONSULTING
FIRE ENGINEER:	FIRE RISK SOLUTIONS
APPROVED INSPECTOR:	BRCS
PLANNING CONSULTANT:	DP9

NOTE

1. Do not scale from this drawing.
2. All dimensions to be checked on site by the contractor and such dimensions to be his responsibility.
3. Report all drawing errors, omissions and discrepancies to the architect.
4. This document may be issued in an uncontrolled CAD format to enable others to use it as background information to make alterations and/or additions. In that instance the file will be accompanied by a PDF version. It is for those making such alterations and additions to ensure that they make use of current background information. AHMM Ltd accepts no liability for any such alterations or additions to the background information or arising out of changes to background information which occur prior to alterations of additions being made.



**ALLFORD HALL MONAGHAN MORRIS**  
ARCHITECTS Ltd  
MORELANDS, 5-23 OLD STREET LONDON EC1V 9HL  
TEL 020 7251 5281 FAX 020 7251 5123 WEB WWW.AHMM.CO.UK

job title  
**ARTHUR STANLEY HOUSE**

drawing title / location  
**PROPOSED GA SECTION SECTION D-D**

drawn by LV	checked GH	scale 1:100@A1; 1:200@A3	status PLANNING
project 15068	zone	source	classification (00)_P302 P01