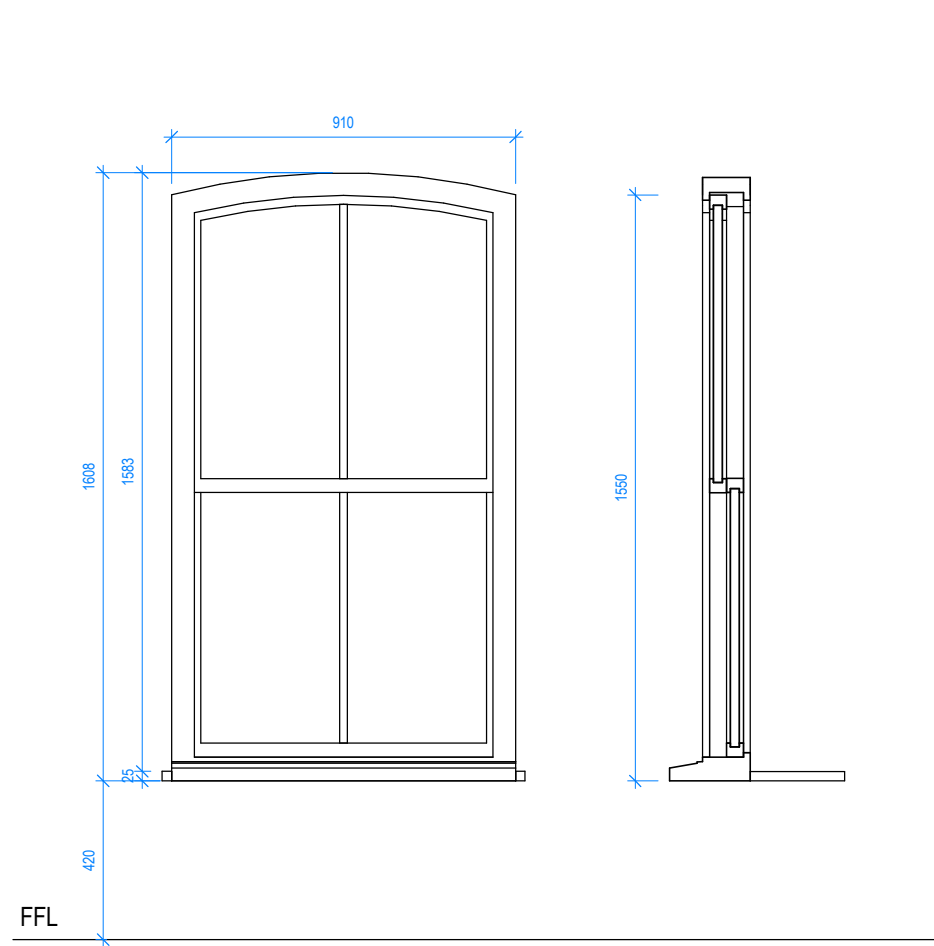
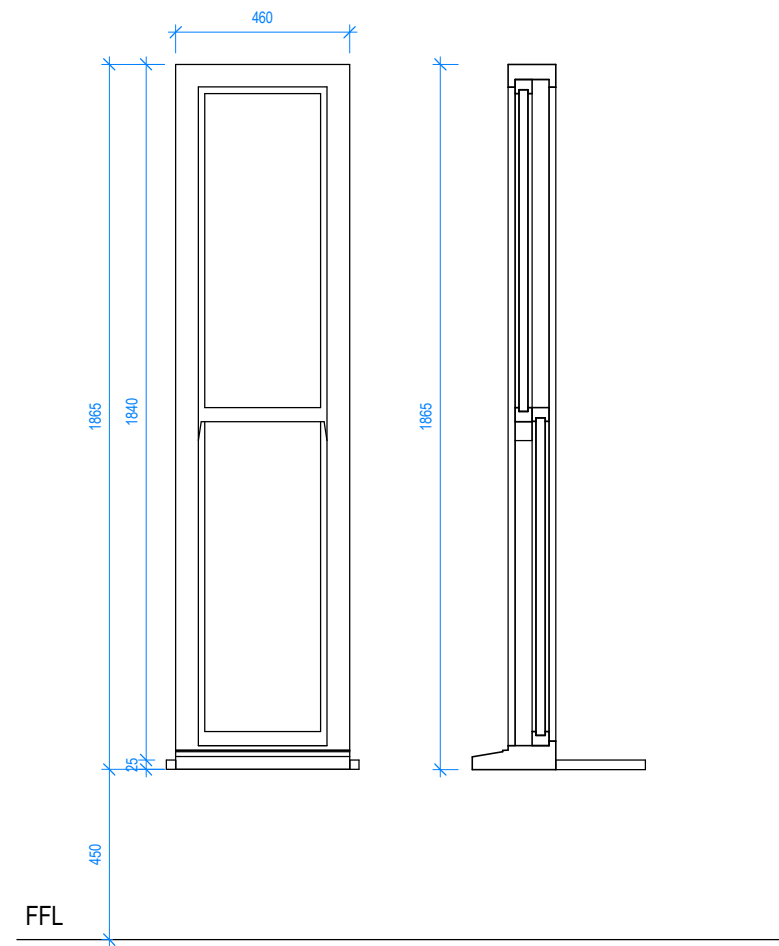


**NOTES**  
 DO NOT SCALE DIMENSIONS OFF THIS DRAWING  
 CHECK ALL DIMENSIONS ON SITE BEFORE FABRICATION  
 REPORT ALL ERRORS OR OMISSIONS TO SPRUNT LIMITED  
 ANY DISCREPANCY TO BE VERIFIED WITH SPRUNT LIMITED BEFORE  
 PROCEEDING WITH THE WORKS  
 THIS DRAWING IS PROTECTED UNDER COPYRIGHT AND  
 SHALL NOT BE REPRODUCED IN PART OR WHOLE WITHOUT PRIOR  
 EXPRESSED PERMISSION OF SPRUNT LIMITED

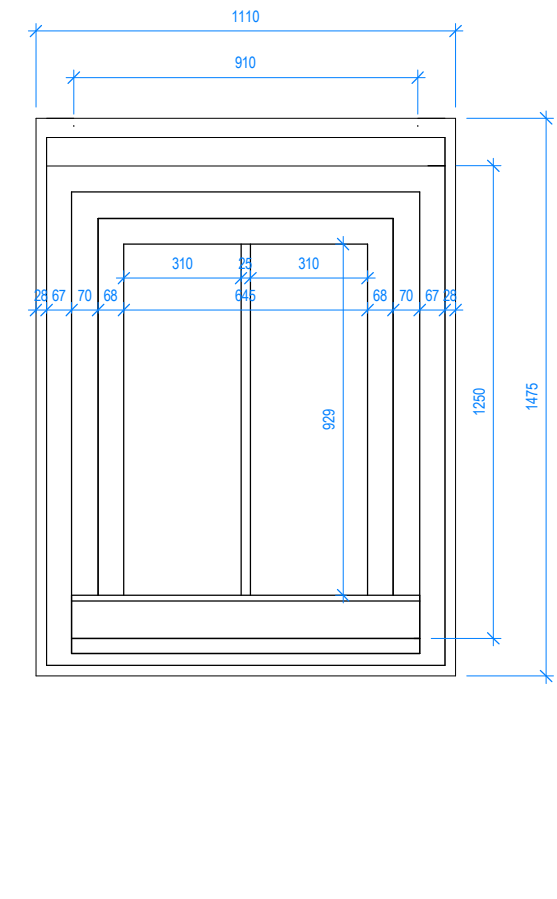
CDM 2015  
 ALL CURRENT DRAWINGS AND SPECIFICATIONS FOR THE  
 PROJECT MUST BE READ IN CONJUNCTION WITH THE  
 DESIGNER'S HAZARD AND ENVIRONMENT ASSESSMENT  
 RECORD



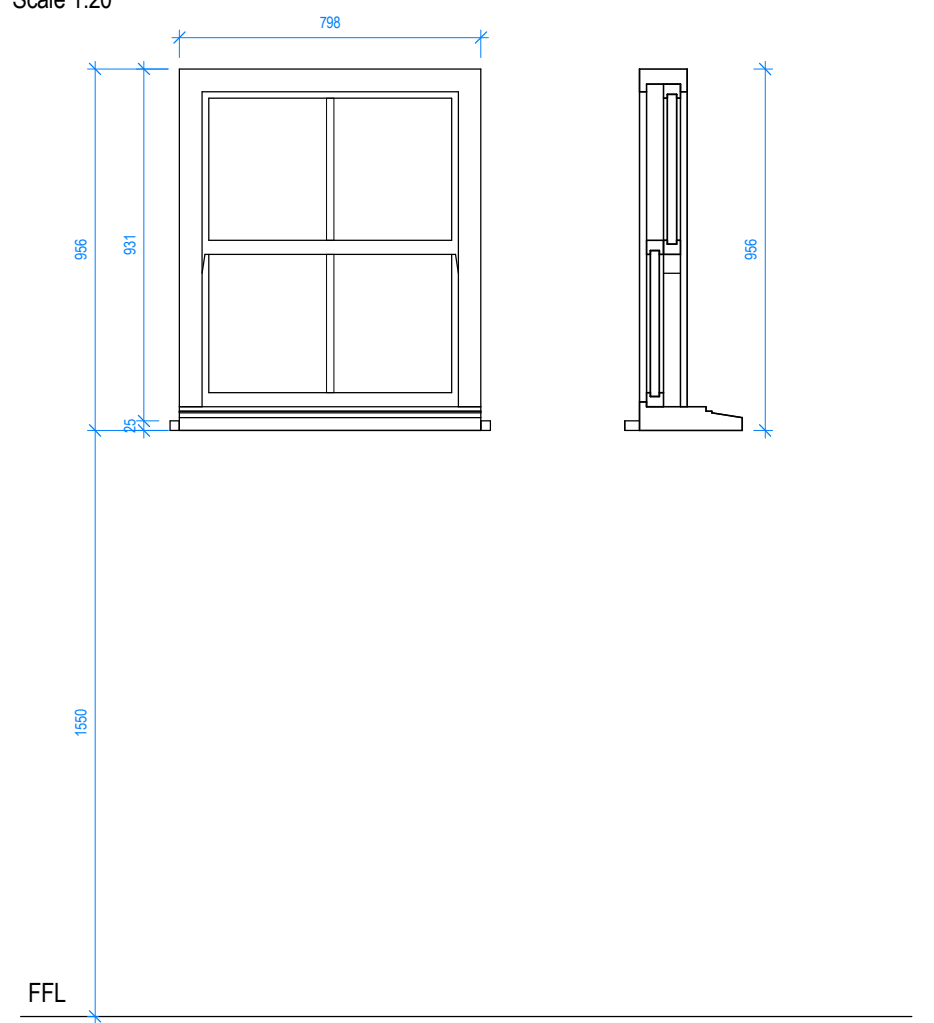
**Window Type 07** - 910 x 1550 mm  
 Scale 1:20



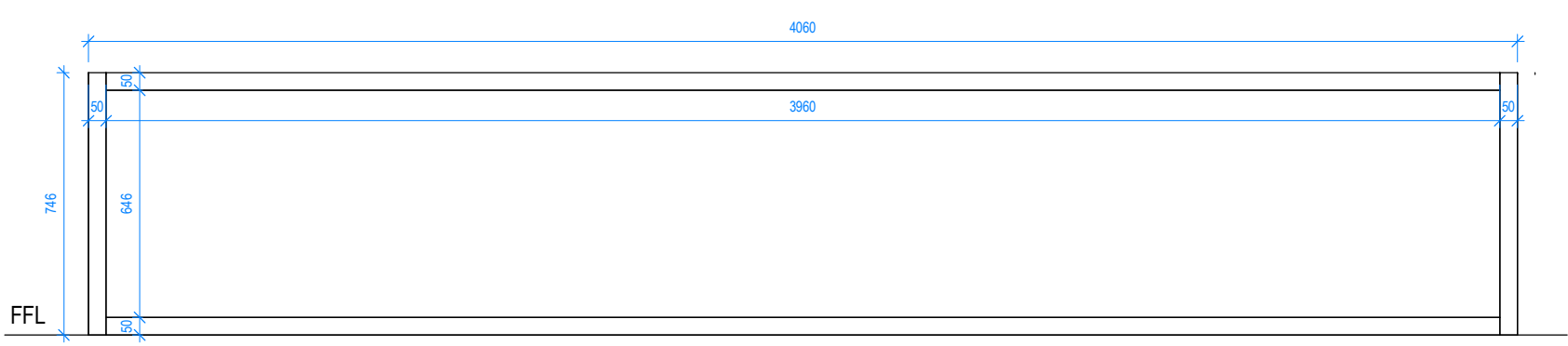
**Window Type 08** - 460 x 1865 mm  
 Scale 1:20



**Window Type 09 (Roof Light)** - 910 x 1210 mm  
 Scale 1:20



**Window Type 10 (Dormer)** - 797.5 x 956 mm  
 Scale 1:20



**Window Type 11** - 4060 x 746 mm  
 Scale 1:20

Window Mark	Width (mm)	Height (mm)	Count	Window Type	Frame Material	Sill Height (mm)
W-01	685	1990	4	Sash Window	Timber	1200
W-02	630	1700	2	Sash Window	Timber	500
W-03	910	1865	6	Sash Window	Timber	420
W-04	1325	1990	2	Sash Window	Timber	1200
W-05	1067	1810	4	Sash Window	Timber	775
W-06	685	1865	2	Sash Window	Timber	420
W-07	910	1550	4	Sash Window	Timber	420
W-08	460	1865	3	Sash Window	Timber	500
W-09	910	1210	1	Roof Light	Aluminium	-
W-10	797.5	956	4	Sash Window (Dormer)	Timber	-

REV	BY	DATE	DESCRIPTION
4_2	LS	31.07.17	Window detail for planning
4_1	LB	01.02.17	First Tender Issue

STATUS

**Stage 4**

CONTRACTOR

**MASRO**

PROJECT

**12516 - FALKLAND ROAD**

CLIENT

**Soul Space 2**

DRAWING TITLE

**Window Shedule 3/3**

DATE CREATED	DATE AMENDED	SCALE
01.02.17	31.07.17	As indicated@A3
DRAWN BY LB	AMENDED BY LS	CHECKED JK

DRAWING NO & REVISION  
**12516-SPR-XX-AR-50-04-4\_2**

First Floor, 20 Northdown Street  
 London N1 9BG  
 T +44 (0)20 7833 3555  
 F +44 (0)20 7837 0296  
 www.sprunt.net

