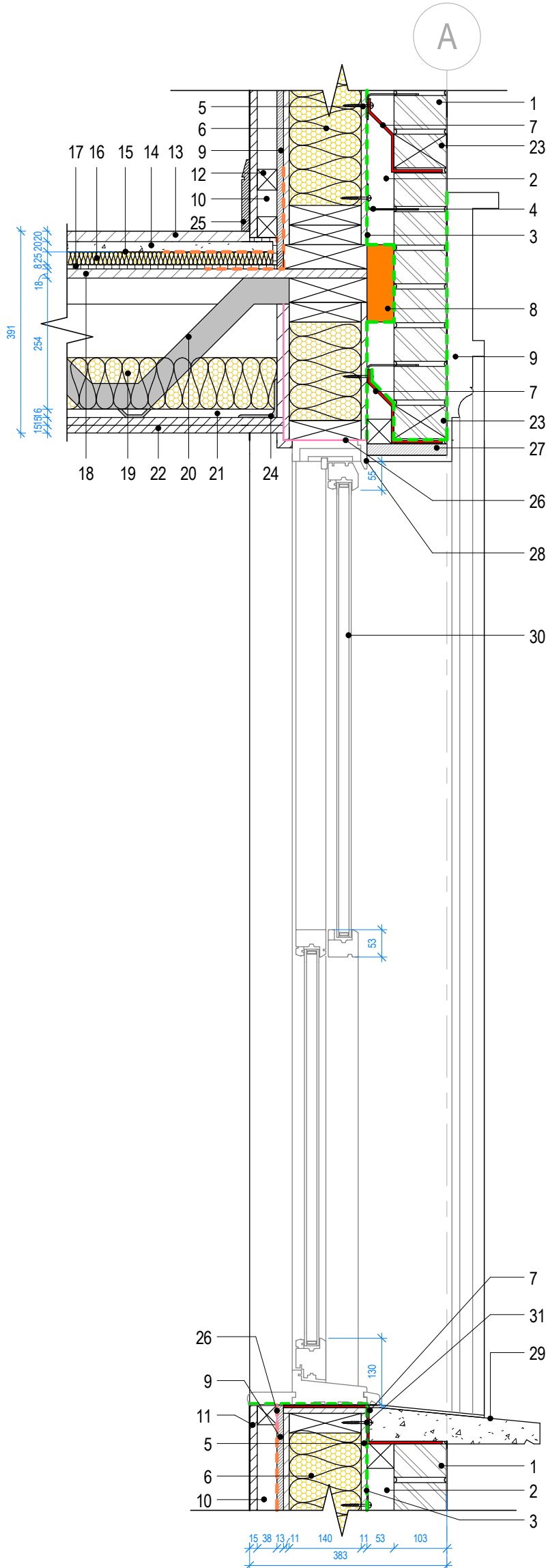


NOTES
 DO NOT SCALE DIMENSIONS OFF THIS DRAWING
 CHECK ALL DIMENSIONS ON SITE BEFORE FABRICATION
 REPORT ALL ERRORS OR OMISSIONS TO SPRUNT LIMITED
 ANY DISCREPANCY TO BE VERIFIED WITH SPRUNT LIMITED BEFORE
 PROCEEDING WITH THE WORKS
 THIS DRAWING IS PROTECTED UNDER COPYRIGHT AND
 SHALL NOT BE REPRODUCED IN PART OR WHOLE WITHOUT PRIOR
 EXPRESSED PERMISSION OF SPRUNT LIMITED

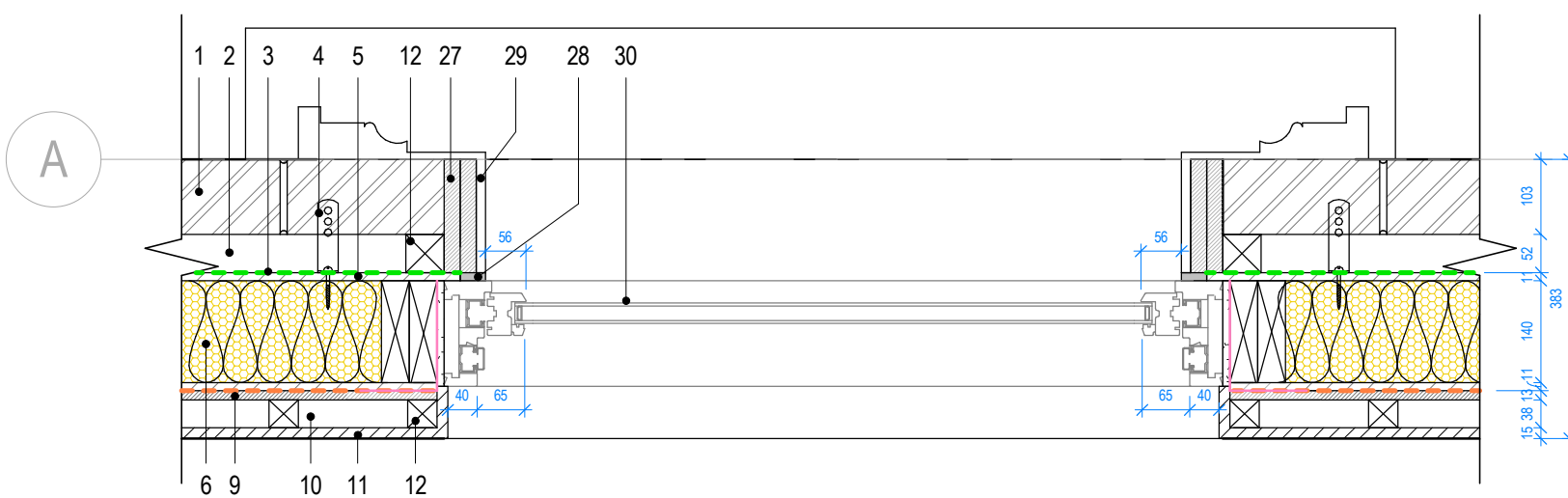
CDM 2015
 ALL CURRENT DRAWINGS AND SPECIFICATIONS FOR THE
 PROJECT MUST BE READ IN CONJUNCTION WITH THE
 DESIGNER'S HAZARD AND ENVIRONMENT ASSESSMENT
 RECORD

KEY LEGEND

1. 102.5mm Facing Brickwork as spec. F10
2. 52.5mm Cavity
3. Breather Membrane as spec. P10
4. Brick Tie with Stainless Steel Screw as spec. F30.
5. 11mm OSB Board as Innovare Design and Spec.
6. 140mm SIP Panel as Innovare Design and Spec.
7. DPC as spec. F30.
8. Fire Break Barrier as spec. P10.
9. MGO Board as Innovare Design and Spec.
10. 38mm service void with 38x50mm timber battens.
11. 15mm Plasterboard as spec. K10
12. Timber Fixing Battens as spec. K10.
13. 20mm Timber Floor as spec. K10.
14. 20mm Screed Board as spec. K21.
15. VCL (Vapour Control Layer) as spec. P10.
16. 25mm UFH Insulation with in built low-profile diffuser panels as spec P10.
17. 8mm Resilient layer as spec K11.
18. 18mm OSB Board as Innovare spec.
19. 100mm acoustic insulation between joists as spec P10.
20. 254mm timber joists system with metal web brackets as Innovare spec.
21. 16mm resilient layer bar as spec K10.
22. 2x15mm layers of plasterboard as spec K10.
23. 102.5mm Air Brick as spec. F10.
24. 75x75mm Steel Angle Fixed to SIP Panel as spec Z11.
25. Timber skirting as spec.
26. EDPM as Window Manufacturer spec.
27. 22mm Plywood Board.
28. Sealant.
29. Glass Fibre Cement (Bespoke Moulding) as per Manufacturer's spec.
30. Timber sash window as per spec L10 and Manufacturer's details.
31. Ajustable Slotted Anchor



Sash Window Section
1 : 10



Sash Window Plan
1 : 10

4.1	LS	31.07.17	Window detail for planning
REV	BY	DATE	DESCRIPTION
STATUS			
Stage 4			
CONTRACTOR			
MASRO			
PROJECT			
12516 - FALKLAND ROAD			
CLIENT			
Soul Space 2			
DRAWING TITLE			
Sash Window Detail			
DATE CREATED	DATE AMENDED	SCALE	
28.03.17	31.07.17	1 : 10@A3	
DRAWN BY	AMENDED BY	CHECKED	
LB	LS	JK	
DRAWING NO & REVISION			
12516-SPR-XX-AR-48-07-4_1			
First Floor, 20 Northdown Street London N1 9BG			
T +44 (0)20 7833 3555 F +44 (0)20 7837 0296 www.sprunt.net			
			sprunt. ver 3.Br