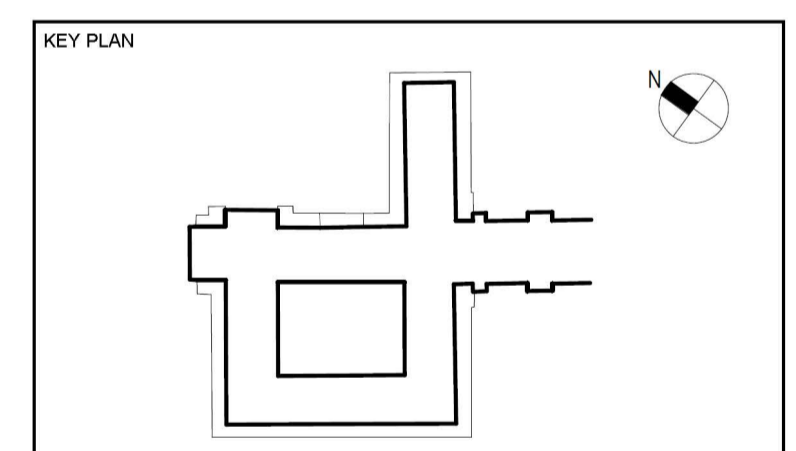


Floor Cut Key:

Oak T&G Flooring Boards:	
Herringbone Parquet:	
Polished Oak T&G Boards:	
Travertine Panels:	
Non-listed Flooring:	
Raised Access Flooring:	



PROJECT STATUS
AFTERCARE

COMPANY
GRAHAM CONSTRUCTION LTD



PROJECT TITLE
**SOAS NORTH BLOCK
MALET STREET
LONDON
WC1E 7HU**

DRAWING TITLE
**SOAS LTHW PIPEWORK REPLACEMENT
WORKS
FLOOR CUT PLAN - THIRD FLOOR**

PROJECT CODE AN14	DRAWN BY CW	DATE 07/07/2017
	CHECKED BY	DATE

DRAWING NUMBER
SOAS - LTHW - 03 - 006

SCALE 1 : 100 @A1	PAGE 1 of 1
-----------------------------	-----------------------