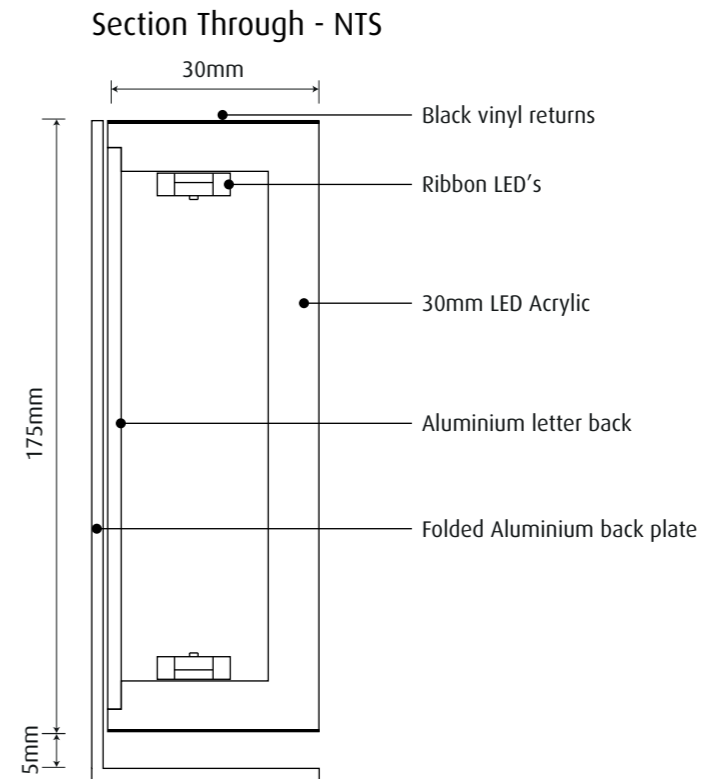
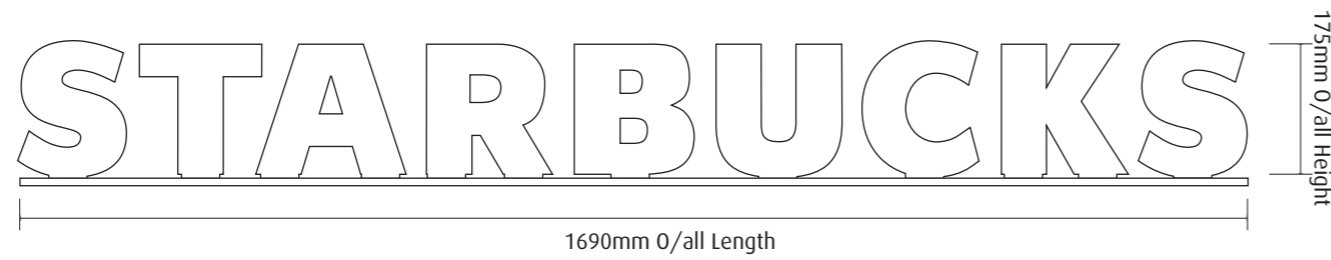
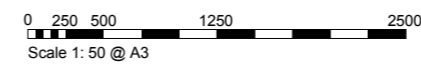
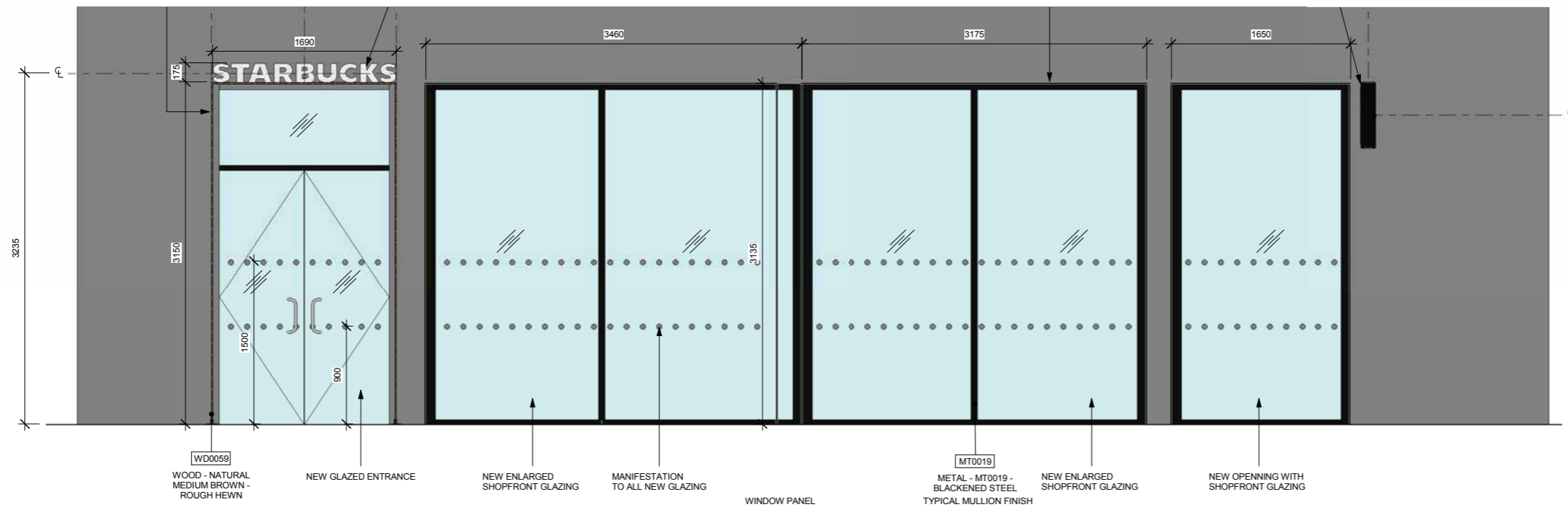


### 1 Off LED Illuminated Letters - 1:10

30mm deep Internally illuminated LED Wordmark consisting of acrylic letters with black vinyl returns, mounted to folded aluminium back plates and fixed to the top of the metal box framework.



### Front Elevation - 1:50



**1 Off 605mm LED Projecting Sign - 1:5**

Signs comprising 605mm diameter aluminium sign carcass with 2no. 40x40 aluminium box section arms welded to internal vertical plates within carcass and 460mm x 100mm x 5mm thick aluminium wall plate, all finished powdercoated satin black externally.

Sign to have 2no. 3mm thick 050 opal acrylic faces with face applied 2330-78 green translucent siren vinyls and black jewelrite trim around perimeter.

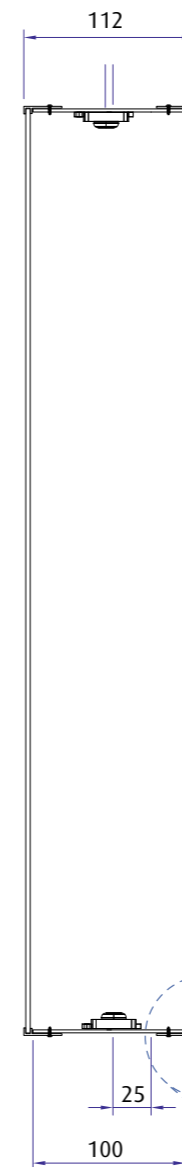
Sign to be illuminated by Chiplite LEDs mounted to internal returns of sign carcass, 12v feed into sign through one of the 40mm box section arms fed through fascia into building. 12v cable connected to Transformer in access hatch which is to be provided by MC within 1000mm of each sign position and to have fused switched spur on dedicated sign circuit from MDB. Electrical contractor to run all mains cabling, installed fused switched spurs and make final connections.

Signs fitted to building with suitable toggle bolts or rawbolts (subject to site survey/ at fitters discretion)

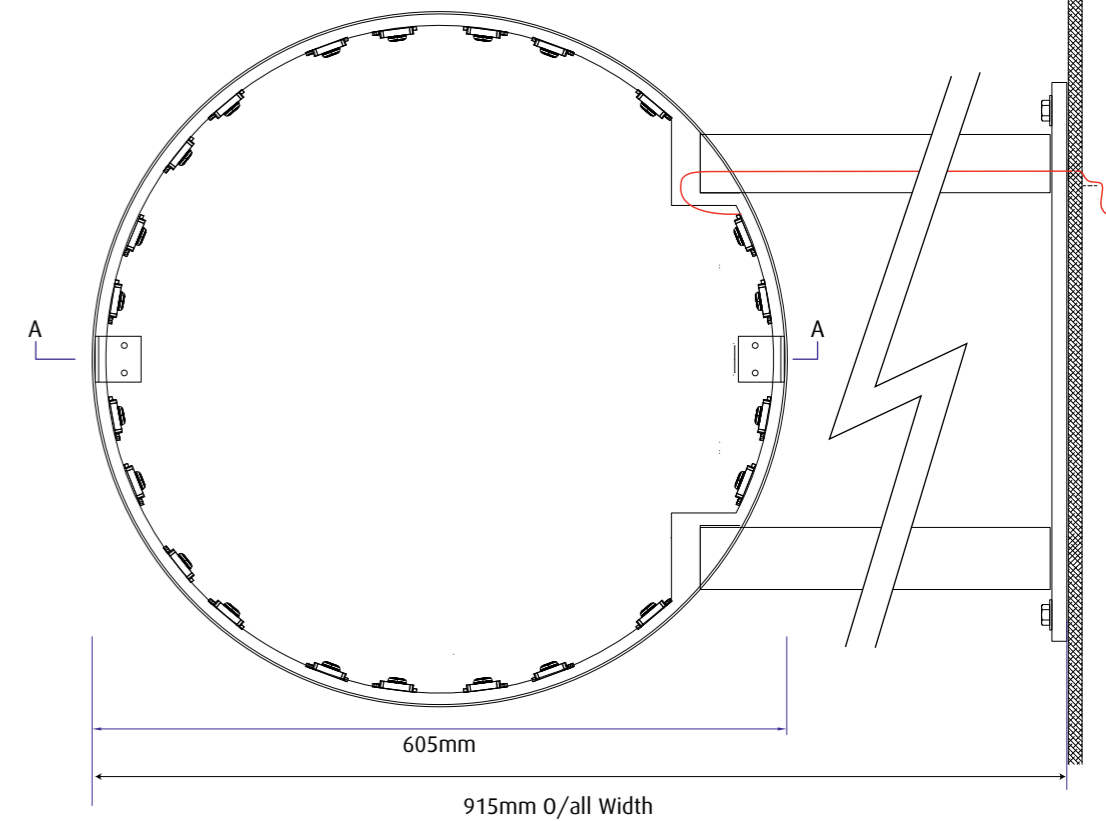
Front Elevation - 1:5



Section A-A



Section Detail - NTS



Scale 1:1