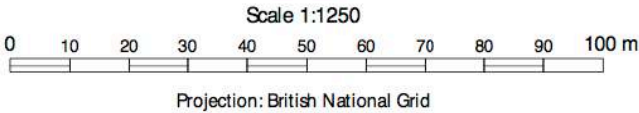


64/66 Charlotte St Location Plan



Planning Application 4B



**Roland Cowan Architects**  
99 Westbourne Park Villas London W2 5ED  
T 0207 229 5599 E info@rca.uk.com  
F 0207 229 5566 W www.rca.uk.com

Project 1329: 64/66 CHARLOTTE STREET LONDON W1T 4QD			
Drawing Title <b>LOCATION PLAN</b>			
Dwg No. 1329-PA-4B-001		Revision	
Scale <b>1:1250 @ A3</b>	Date <b>MAY 2017</b>	Drawn by <b>P</b>	

DO NOT SCALE FROM THIS DRAWING. USE FIGURED DIMENSIONS ONLY. ANY DISCREPANCIES ARE TO BE REPORTED TO RCA IMMEDIATELY. PRIOR TO THE EXECUTION OF THE WORKS ON SITE ALL DIMENSIONS TO BE VERIFIED ON SITE BEFORE ANY WORK IS PUT IN HAND.





Planning Application 4 B


<div>12</div> <div>Roland Cowan Architects</div> <div>99 Westbourne Park Villas London W2 5ED</div> <div>T 0207 229 5599 E info@rca.uk.com</div> <div>F 0207 229 5566 W www.rca.uk.com</div> <div>DO NOT SCALE FROM THIS DRAWING. USE FIGURED DIMENSIONS ONLY. ANY DISCREPANCIES ARE TO BE REPORTED TO RCA IMMEDIATELY. PRIOR TO THE EXECUTION OF THE WORKS ON SITE ALL DIMENSIONS TO BE VERIFIED ON SITE BEFORE ANY WORK IS PUT IN HAND.</div>	Project 1329: 64/66 CHARLOTTE STREET LONDON W1T 4QD		
	Drawing Title EXISTING FRONT AND REAR ELEVATION		
	Dwg No. 1329-PA- 4B-002	Revision	
	Scale 1:100 @ A3	Date MAY 2017	Drawn by P

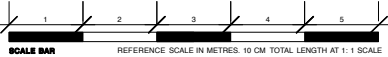
B. NO MANSARD BUT NEW ROOF TO MATCH  
NEIGHBOURING PROPERTIES . LIFT SHAFT IN ROOF.  
POSSIBLE DORMER TO REAR.( see PA-021)

OPTION A MANSARD AT 66.



Planning Application 4 B

 Roland Cowan Architects 99 Westbourne Park Villas London W2 5ED T 0207 229 5599 E info@rca.uk.com F 0207 229 5566 W www.rca.uk.com	Project 1329: 64/66 CHARLOTTE STREET LONDON W1T 4QD		
	Drawing Title <b>PROPOSED FRONT / REAR ELEVATION</b>		
	Dwg No.	1329-PA- 4B-004	Revision
	Scale	1:100 @ A3	Date MAY 2017
			Drawn by P

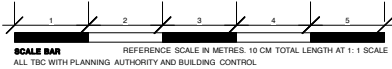



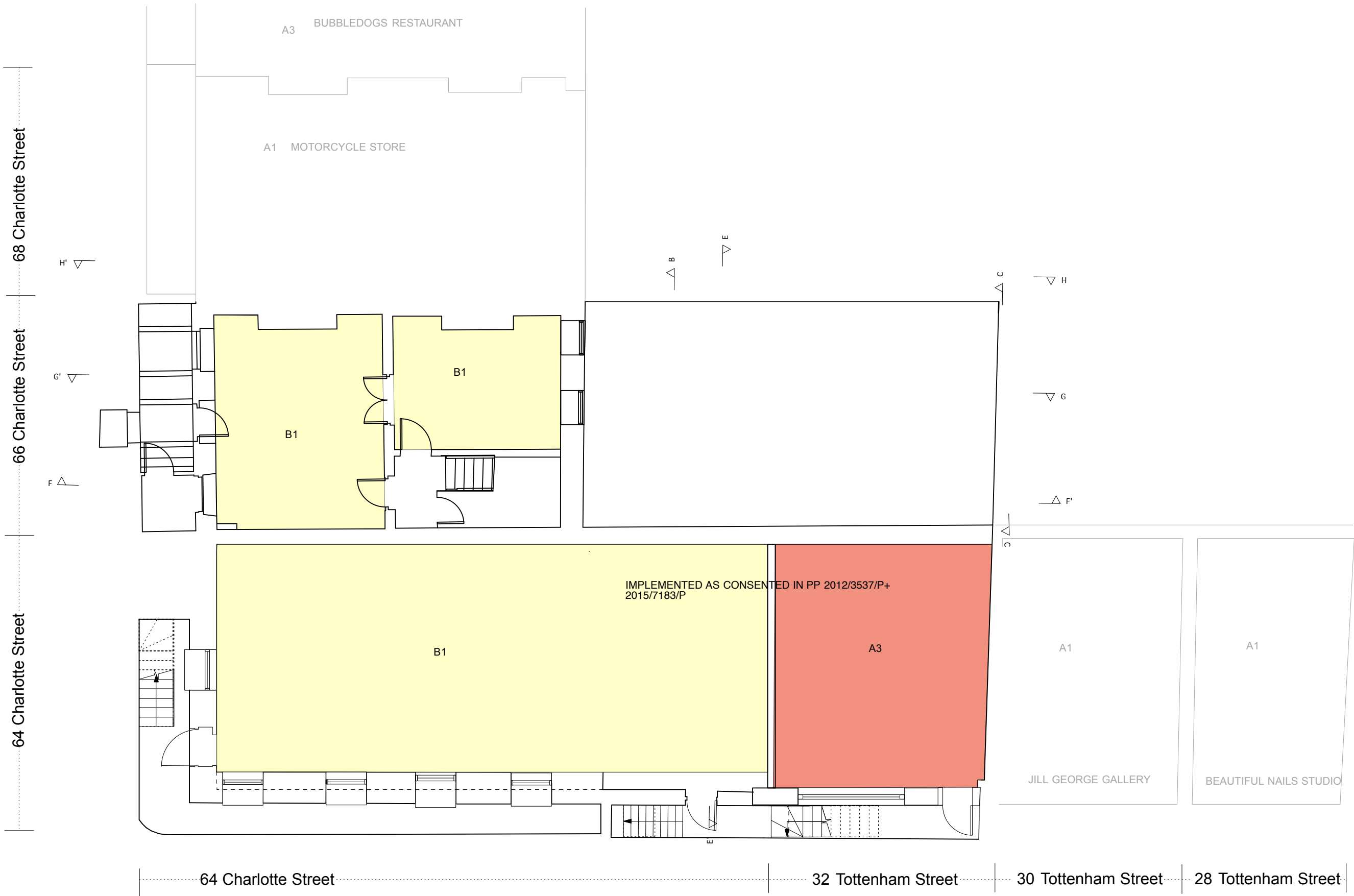
SCALE BAR  
REFERENCE: SCALE IN METRES. 10 CM TOTAL LENGTH AT 1:1 SCALE  
ALL TBC WITH PLANNING AUTHORITY AND BUILDING CONTROL.

DO NOT SCALE FROM THIS DRAWING. USE FIGURED DIMENSIONS ONLY. ANY DISCREPANCIES ARE TO BE REPORTED TO RCA IMMEDIATELY. PRIOR TO THE EXECUTION OF THE WORKS ON SITE ALL DIMENSIONS TO BE VERIFIED ON SITE BEFORE ANY WORK IS PUT IN HAND.



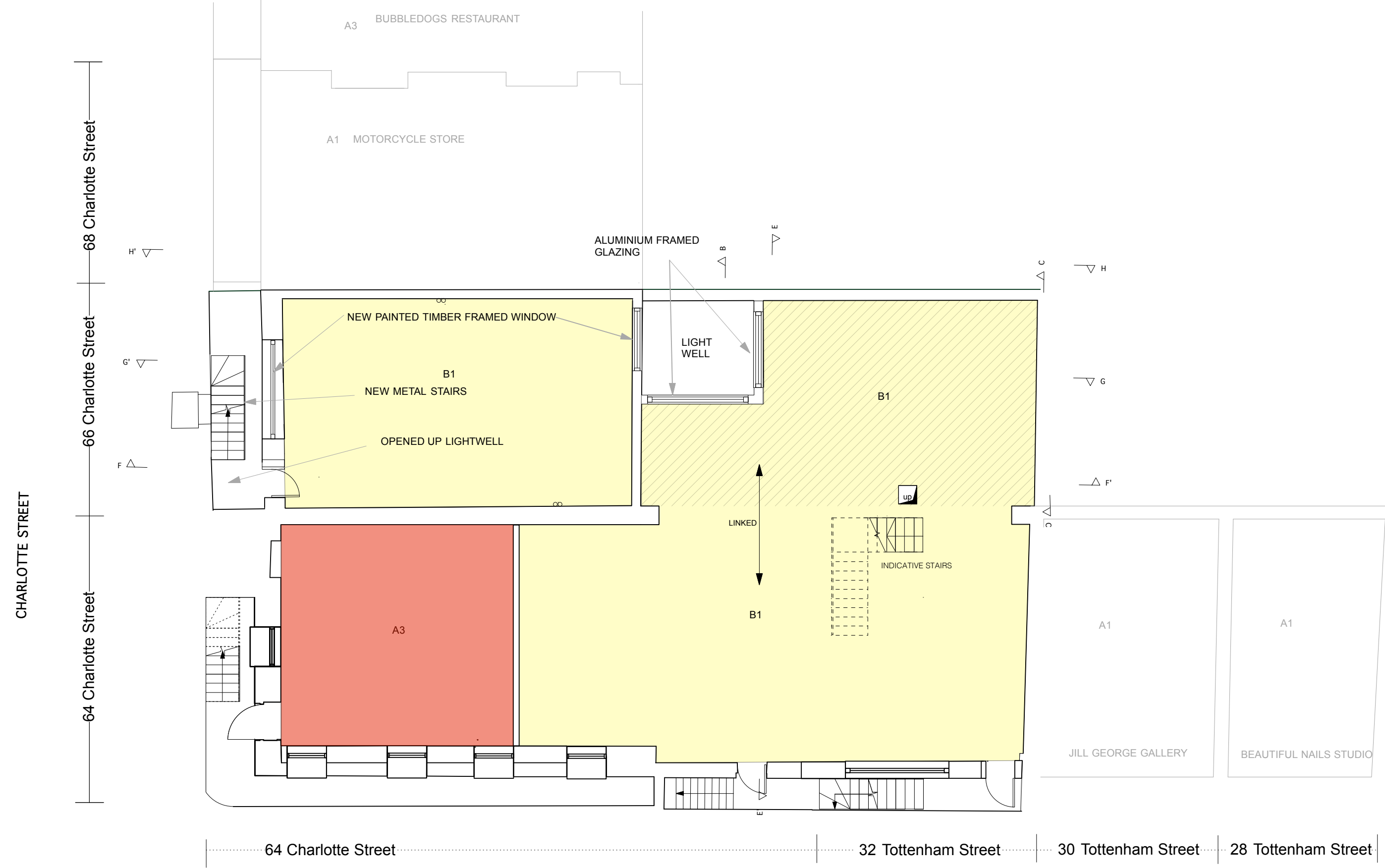
Planning Application 4 B

	 <p>Roland Cowan Architects 99 Westbourne Park Villas London W2 5ED T 0207 229 5599 E info@rca.uk.com F 0207 229 5566 W www.rca.uk.com</p> <p>DO NOT SCALE FROM THIS DRAWING. USE FIGURED DIMENSIONS ONLY. ANY DISCREPANCIES ARE TO BE REPORTED TO RCA IMMEDIATELY. PRIOR TO THE EXECUTION OF THE WORKS ON SITE ALL DIMENSIONS TO BE VERIFIED ON SITE BEFORE ANY WORK IS PUT IN HAND.</p>	Project 1329: 64/66 CHARLOTTE STREET LONDON W1T 4QD		
		Drawing Title <b>EXISTING SIDE ELEVATION</b>		
		Dwg No. 1329-PA- 4B-006		Revision
		Scale <b>1:100 @ A3</b>	Date <b>MAY 2017</b>	Drawn by <b>P</b>



Planning Application 4 B

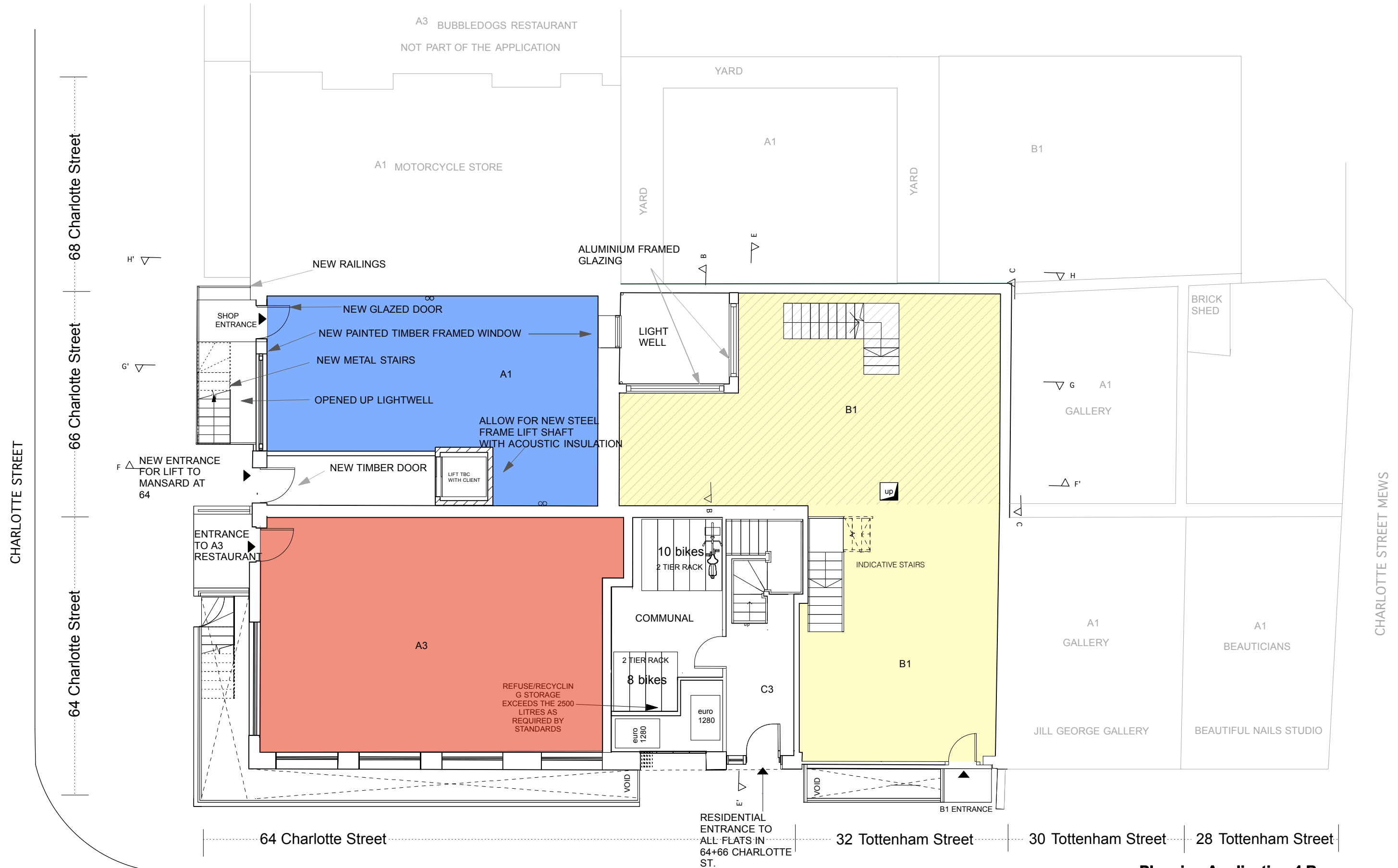
<div><div><div>A1 SHOP</div><div>A3 FOOD AND DRINK</div><div>B1 OFFICE</div><div>C3 DWELLING</div></div><div><div>NEW BUILD</div></div></div> <div><div>SCALE BAR</div><div>REFERENCE SCALE IN METRES: 10 CM TOTAL LENGTH AT 1:1 SCALE</div><div>ALL TBC WITH PLANNING AUTHORITY AND BUILDING CONTROL.</div></div> <div><div><div><div></div><div>INDICATIVE</div></div><div><div>Roland Cowan Architects</div><div>99 Westbourne Park Villas London W2 5ED</div><div>T 0207 229 5599 E info@rca.uk.com</div><div>F 0207 229 5566 W www.rca.uk.com</div></div></div></div> <table><tr><td colspan="3">Project1329: 64/66 CHARLOTTE STREET LONDON W1T 4QD</td></tr><tr><td colspan="3">Drawing TitleEXISTING BASEMENT FLOOR PLAN</td></tr><tr><td>Dwg No.1329-PA-4B-007</td><td colspan="2">Revision</td></tr><tr><td>Scale1:100 @ A3</td><td>DateMAY 2017</td><td>Drawn byP</td></tr><tr><td colspan="3">DO NOT SCALE FROM THIS DRAWING. USE FIGURED DIMENSIONS ONLY. ANY DISCREPANCIES ARE TO BE REPORTED TO RCA IMMEDIATELY. PRIOR TO THE EXECUTION OF THE WORKS ON SITE ALL DIMENSIONS TO BE VERIFIED ON SITE BEFORE ANY WORK IS PUT IN HAND.</td></tr></table>	Project1329: 64/66 CHARLOTTE STREET LONDON W1T 4QD			Drawing TitleEXISTING BASEMENT FLOOR PLAN			Dwg No.1329-PA-4B-007	Revision		Scale1:100 @ A3	DateMAY 2017	Drawn byP	DO NOT SCALE FROM THIS DRAWING. USE FIGURED DIMENSIONS ONLY. ANY DISCREPANCIES ARE TO BE REPORTED TO RCA IMMEDIATELY. PRIOR TO THE EXECUTION OF THE WORKS ON SITE ALL DIMENSIONS TO BE VERIFIED ON SITE BEFORE ANY WORK IS PUT IN HAND.		
Project1329: 64/66 CHARLOTTE STREET LONDON W1T 4QD															
Drawing TitleEXISTING BASEMENT FLOOR PLAN															
Dwg No.1329-PA-4B-007	Revision														
Scale1:100 @ A3	DateMAY 2017	Drawn byP													
DO NOT SCALE FROM THIS DRAWING. USE FIGURED DIMENSIONS ONLY. ANY DISCREPANCIES ARE TO BE REPORTED TO RCA IMMEDIATELY. PRIOR TO THE EXECUTION OF THE WORKS ON SITE ALL DIMENSIONS TO BE VERIFIED ON SITE BEFORE ANY WORK IS PUT IN HAND.															



**Planning Application 4 B**

<div><div><div>A1 SHOP</div><div>A3 FOOD AND DRINK</div><div>B1 OFFICE</div><div>C3 DWELLING</div></div><div><div>NEW BUILD</div></div></div> <div><div>SCALE BAR</div><div>REFERENCE SCALE IN METRES. 10 CM TOTAL LENGTH AT 1:1 SCALE.</div><div>ALL TBC WITH PLANNING AUTHORITY AND BUILDING CONTROL.</div></div> <div><div>INDICATIVE</div></div>	<div><div><div><div></div><div>Roland Cowan Architects</div><div>99 Westbourne Park Villas London W2 5ED</div><div>T 0207 229 5599 E info@rca.uk.com</div><div>F 0207 229 5566 W www.rca.uk.com</div></div><div><div>DO NOT SCALE FROM THIS DRAWING. USE FIGURED DIMENSIONS ONLY. ANY DISCREPANCIES ARE TO BE REPORTED TO RCA IMMEDIATELY. PRIOR TO THE EXECUTION OF THE WORKS ON SITE ALL DIMENSIONS TO BE VERIFIED ON SITE BEFORE ANY WORK IS PUT IN HAND.</div></div></div></div> <tr><td colspan="3">Project 1329: 64/66 CHARLOTTE STREET LONDON W1T 4QD</td></tr> <tr><td colspan="3">Drawing Title <b>PROPOSED BASEMENT FLOOR PLAN</b></td></tr> <tr><td>Dwg No. 1329-PA- 4B-008</td><td colspan="2">Revision</td></tr> <tr><td>Scale 1:100 @ A3</td><td>Date MAY 2017</td><td>Drawn by P</td></tr>	Project 1329: 64/66 CHARLOTTE STREET LONDON W1T 4QD			Drawing Title <b>PROPOSED BASEMENT FLOOR PLAN</b>			Dwg No. 1329-PA- 4B-008	Revision		Scale 1:100 @ A3	Date MAY 2017	Drawn by P
	Project 1329: 64/66 CHARLOTTE STREET LONDON W1T 4QD												
	Drawing Title <b>PROPOSED BASEMENT FLOOR PLAN</b>												
	Dwg No. 1329-PA- 4B-008	Revision											
Scale 1:100 @ A3	Date MAY 2017	Drawn by P											

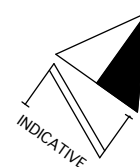
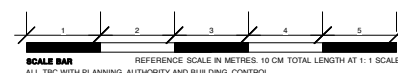




Planning Application 4 B

- A1 SHOP
- A3 FOOD AND DRINK
- B1 OFFICE
- C3 DWELLING

NEW BUILD



Roland Cowan Architects

99 Westbourne Park Villas London W2 5ED

T 0207 229 5599 E info@rca.uk.com

F 0207 229 5566 W www.rca.uk.com

DO NOT SCALE FROM THIS DRAWING. USE FIGURED DIMENSIONS ONLY. ANY DISCREPANCIES ARE TO BE REPORTED TO RCA IMMEDIATELY. PRIOR TO THE EXECUTION OF THE WORKS ON SITE ALL DIMENSIONS TO BE VERIFIED ON SITE BEFORE ANY WORK IS PUT IN HAND.

Project 1329: 64/66 CHARLOTTE STREET LONDON W1T 4QD

Drawing Title

PROPOSED GROUND FLOOR PLAN

Dwg No. 1329-PA- 4B-010

Revision

Scale 1:100 @ A3

Date MAY 2017

Drawn by P



CHARLOTTE STREET

68 Charlotte Street

66 Charlotte Street

64 Charlotte Street

H'

G'

F

64 Charlotte Street

32 Tottenham Street

30 Tottenham Street

28 Tottenham Street

CHARLOTTE STREET MEWS

C3  
C3

ROOF

B1

B1

B1

YARD

ROOF

ROOF

YARD

ROOF

G

F'

C3

C3

IMPLEMENTED AS CONSENTED IN PP 2012/3537/P

C3

NO CHANGES 64 ACCOMODATION DOES NOT FORM PART OF THIS APPLICATION

E'

**Planning Application 4 B**

- A1 SHOP
- A3 FOOD AND DRINK
- B1 OFFICE
- C3 DWELLING

NEW BUILD



Roland Cowan Architects  
99 Westbourne Park Villas London W2 5ED  
T 0207 229 5599 E info@rca.uk.com  
F 0207 229 5566 W www.rca.uk.com

DO NOT SCALE FROM THIS DRAWING. USE FIGURED DIMENSIONS ONLY. ANY DISCREPANCIES ARE TO BE REPORTED TO RCA IMMEDIATELY. PRIOR TO THE EXECUTION OF THE WORKS ON SITE ALL DIMENSIONS TO BE VERIFIED ON SITE BEFORE ANY WORK IS PUT IN HAND.

Project 1329: 64/66 CHARLOTTE STREET LONDON W1T 4QD

Drawing Title  
**EXISTING FIRST FLOOR PLAN**

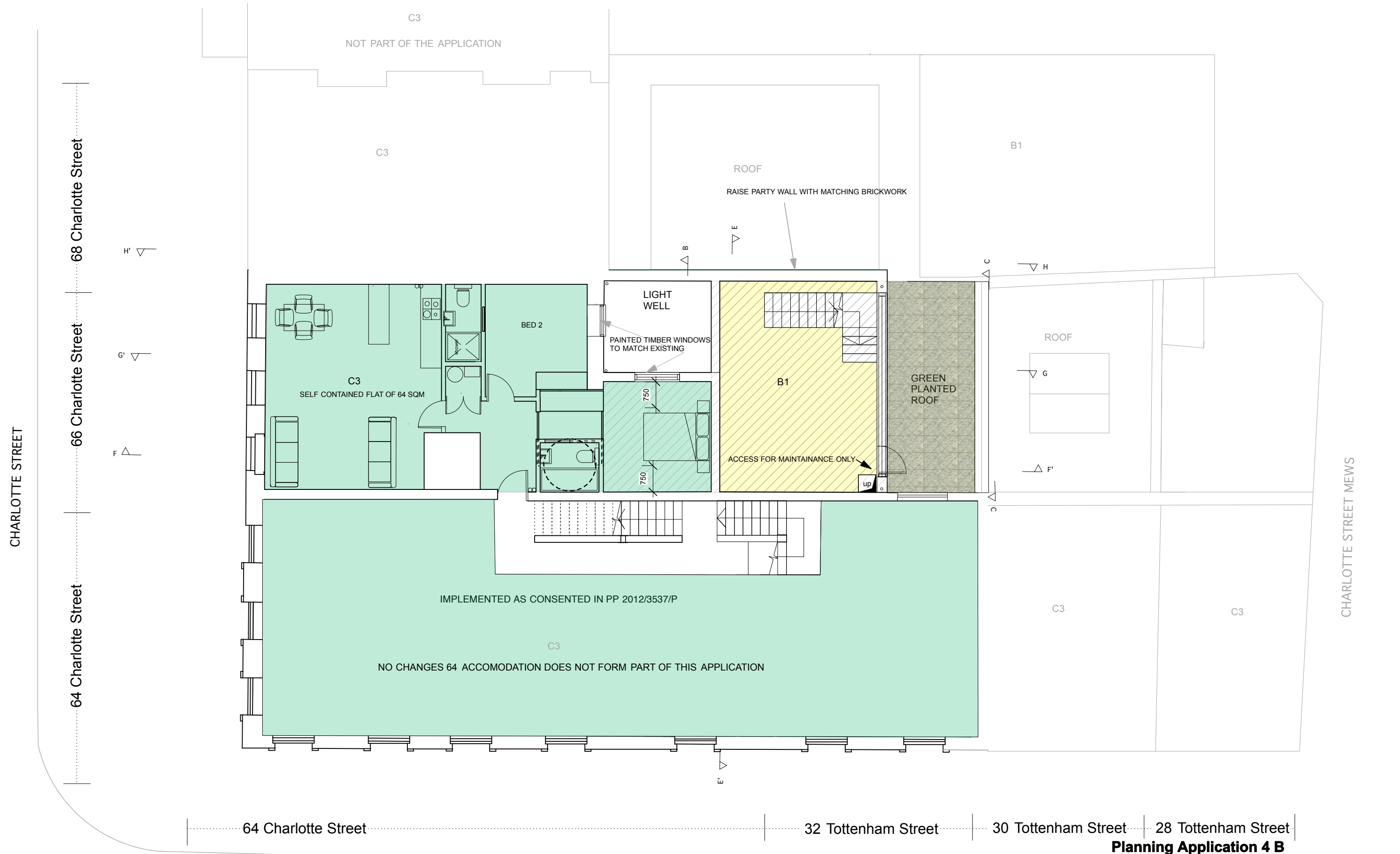
Dwg No. 1329-PA- 4B-011

Revision

Scale 1:100 @ A3

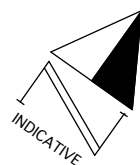
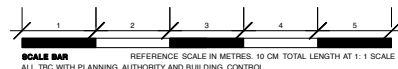
Date MAY 2017

Drawn by P



- A1 SHOP
- A3 FOOD AND DRINK
- B1 OFFICE
- C3 DWELLING

NEW BUILD



Roland Cowan Architects

99 Westbourne Park Villas London W2 5ED

T 0207 229 5599 E info@rca.uk.com

F 0207 229 5566 W www.rca.uk.com

DO NOT SCALE FROM THIS DRAWING. USE FIGURED DIMENSIONS ONLY. ANY DISCREPANCIES ARE TO BE REPORTED TO RCA IMMEDIATELY. PRIOR TO THE EXECUTION OF THE WORKS ON SITE ALL DIMENSIONS TO BE VERIFIED ON SITE BEFORE ANY WORK IS PUT IN HAND.

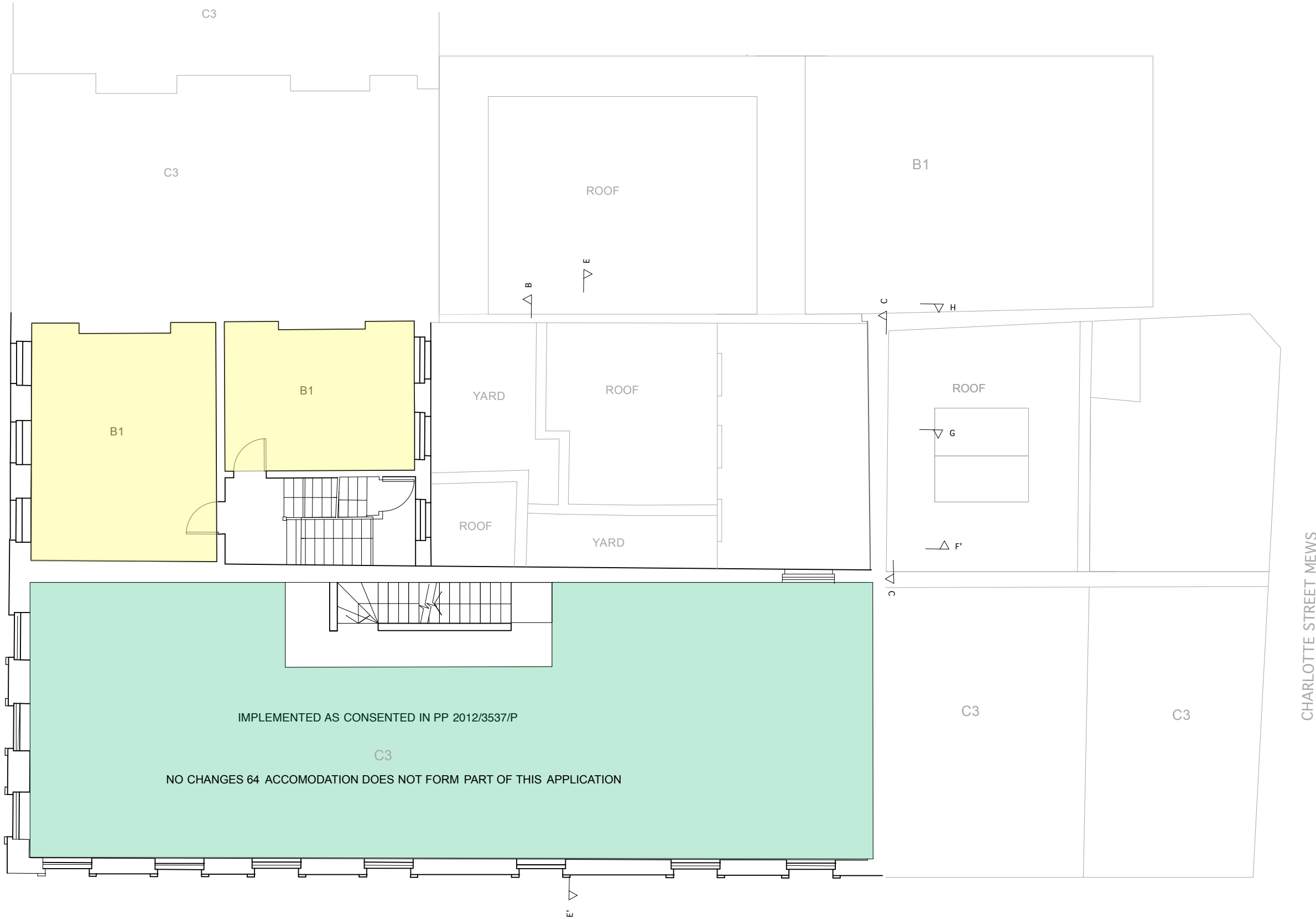
Project 1329: 64/66 CHARLOTTE STREET LONDON W1T 4QD		
Drawing Title <b>PROPOSED FIRST FLOOR PLAN</b>		
Dwg No. 1329-PA- 4B-012	Revision	
Scale 1:100 @ A3	Date MAY 2017	Drawn by P

CHARLOTTE STREET

68 Charlotte Street

66 Charlotte Street

64 Charlotte Street



64 Charlotte Street

32 Tottenham Street

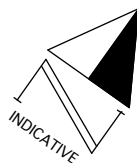
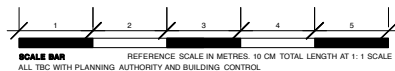
30 Tottenham Street

28 Tottenham Street

**Planning Application 4 B**

- A1 SHOP
- A3 FOOD AND DRINK
- B1 OFFICE
- C3 DWELLING

NEW BUILD



Roland Cowan Architects

99 Westbourne Park Villas London W2 5ED

T 0207 229 5599 E info@rca.uk.com

F 0207 229 5566 W www.rca.uk.com

DO NOT SCALE FROM THIS DRAWING. USE FIGURED DIMENSIONS ONLY. ANY DISCREPANCIES ARE TO BE REPORTED TO RCA IMMEDIATELY. PRIOR TO THE EXECUTION OF THE WORKS ON SITE ALL DIMENSIONS TO BE VERIFIED ON SITE BEFORE ANY WORK IS PUT IN HAND.

Project 1329: 64/66 CHARLOTTE STREET LONDON W1T 4QD		
Drawing Title <b>EXISTING SECOND FLOOR PLAN</b>		
Dwg No. 1329-PA- 4B-013	Revision	
Scale 1:100 @ A3	Date MAY 2017	Drawn by P









Planning Application 4 B

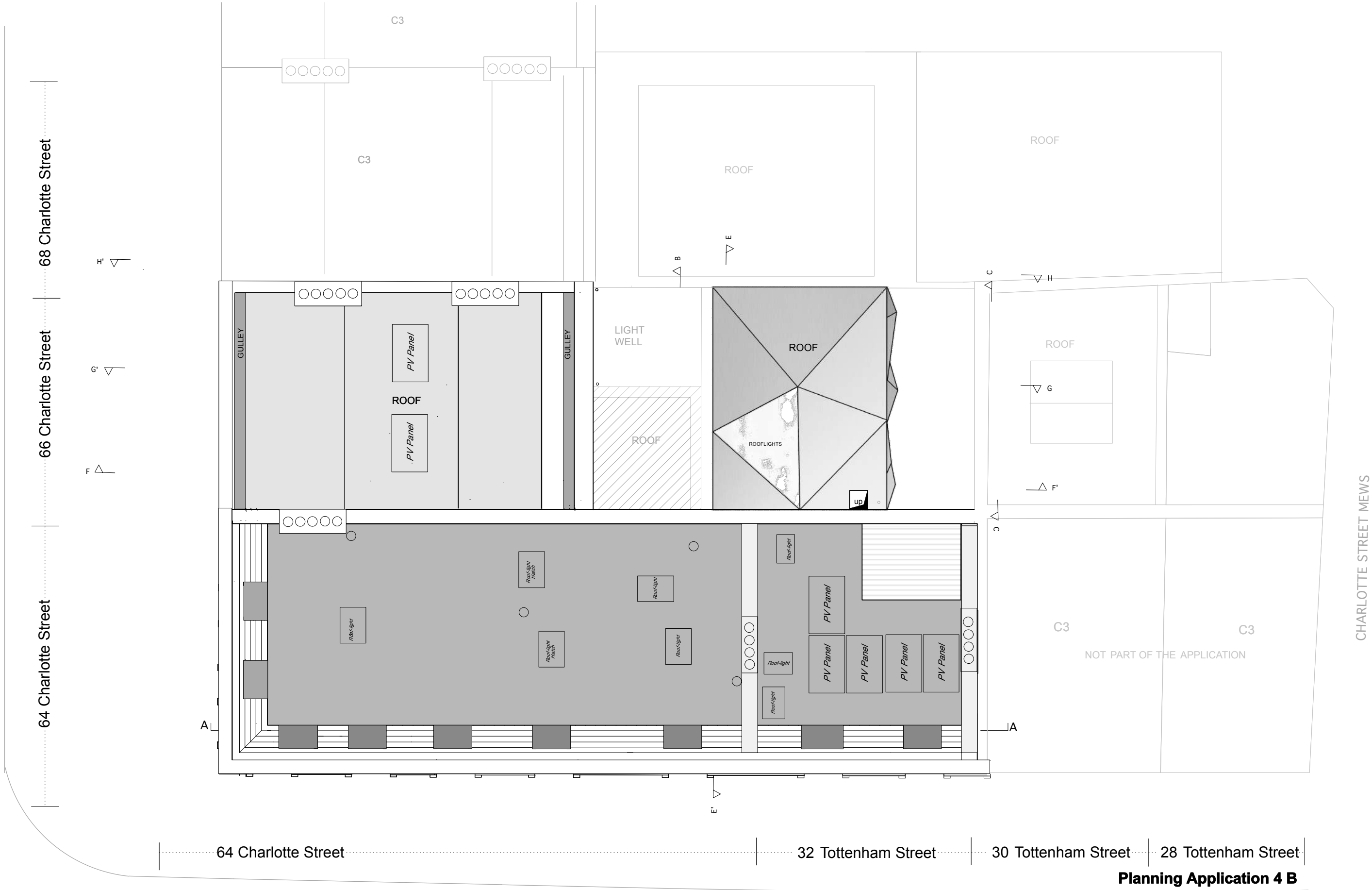
<div><div></div>A1 SHOP</div> <div><div></div>A3 FOOD AND DRINK</div> <div><div></div>B1 OFFICE</div> <div><div></div>C3 DWELLING</div>	<div><div></div>NEW BUILD</div>	<div><div></div>INDICATIVE</div> <div><div>1 2 3 4 5</div><div>SCALE BAR</div><div>REFERENCE SCALE IN METRES, 10 CM TOTAL LENGTH AT 1:1 SCALE</div><div>ALL TBC WITH PLANNING AUTHORITY AND BUILDING CONTROL</div></div>	<div><div><div></div></div><div>Roland Cowan Architects</div><div>99 Westbourne Park Villas London W2 5ED</div><div>T 0207 229 5599 E info@rca.uk.com</div><div>F 0207 229 5566 W www.rca.uk.com</div><div>DO NOT SCALE FROM THIS DRAWING. USE FIGURED DIMENSIONS ONLY. ANY DISCREPANCIES ARE TO BE REPORTED TO RCA IMMEDIATELY. PRIOR TO THE EXECUTION OF THE WORKS ON SITE ALL DIMENSIONS TO BE VERIFIED ON SITE BEFORE ANY WORK IS PUT IN HAND.</div></div>	<div><div>Project</div>1329: 64/66 CHARLOTTE STREET LONDON W1T 4QD</div> <div><div>Drawing Title</div><div>PROPOSED THIRD FLOOR PLAN</div></div> <div><div>Dwg No.</div>1329-PA- 4B-016</div> <div><div>Revision</div></div> <div><div>Scale</div>1:100 @ A3</div> <div><div>Date</div>MAY 2017</div> <div><div>Drawn by</div>P</div>
---	---------------------------------	--	--	---





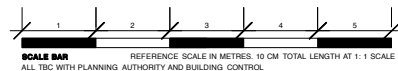
Planning Application 4 B

<div><div></div>A1 SHOP</div> <div><div></div>A3 FOOD AND DRINK</div> <div><div></div>B1 OFFICE</div> <div><div></div>C3 DWELLING</div>	<div><div></div>NEW BUILD</div>	<div><div></div>INDICATIVE</div>	<div><div></div><div>Roland Cowan Architects</div><div>99 Westbourne Park Villas London W2 5ED</div><div>T 0207 229 5599 E info@rca.uk.com</div><div>F 0207 229 5566 W www.rca.uk.com</div><div>DO NOT SCALE FROM THIS DRAWING. USE FIGURED DIMENSIONS ONLY. ANY DISCREPANCIES ARE TO BE REPORTED TO RCA IMMEDIATELY. PRIOR TO THE EXECUTION OF THE WORKS ON SITE ALL DIMENSIONS TO BE VERIFIED ON SITE BEFORE ANY WORK IS PUT IN HAND.</div></div>	<table><tr><td colspan="3">Project 1329: 64/66 CHARLOTTE STREET LONDON W1T 4QD</td></tr><tr><td colspan="3">Drawing Title</td></tr><tr><td colspan="3">EXISTING 66 ROOF PLAN</td></tr><tr><td>Dwg No.</td><td>1329-PA- 4B-020</td><td>Revision</td></tr><tr><td>Scale</td><td>1:100 @ A3</td><td>Date MAY 2017</td></tr><tr><td></td><td></td><td>Drawn by P</td></tr></table>	Project 1329: 64/66 CHARLOTTE STREET LONDON W1T 4QD			Drawing Title			EXISTING 66 ROOF PLAN			Dwg No.	1329-PA- 4B-020	Revision	Scale	1:100 @ A3	Date MAY 2017			Drawn by P
Project 1329: 64/66 CHARLOTTE STREET LONDON W1T 4QD																						
Drawing Title																						
EXISTING 66 ROOF PLAN																						
Dwg No.	1329-PA- 4B-020	Revision																				
Scale	1:100 @ A3	Date MAY 2017																				
		Drawn by P																				



- A1 SHOP
- A3 FOOD AND DRINK
- B1 OFFICE
- C3 DWELLING

NEW BUILD



Roland Cowan Architects

99 Westbourne Park Villas London W2 5ED

T 0207 229 5599 E info@rca.uk.com

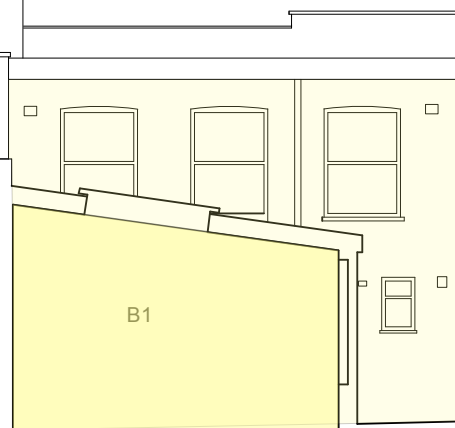
F 0207 229 5566 W www.rca.uk.com

DO NOT SCALE FROM THIS DRAWING. USE FIGURED DIMENSIONS ONLY. ANY DISCREPANCIES ARE TO BE REPORTED TO RCA IMMEDIATELY. PRIOR TO THE EXECUTION OF THE WORKS ON SITE ALL DIMENSIONS TO BE VERIFIED ON SITE BEFORE ANY WORK IS PUT IN HAND.

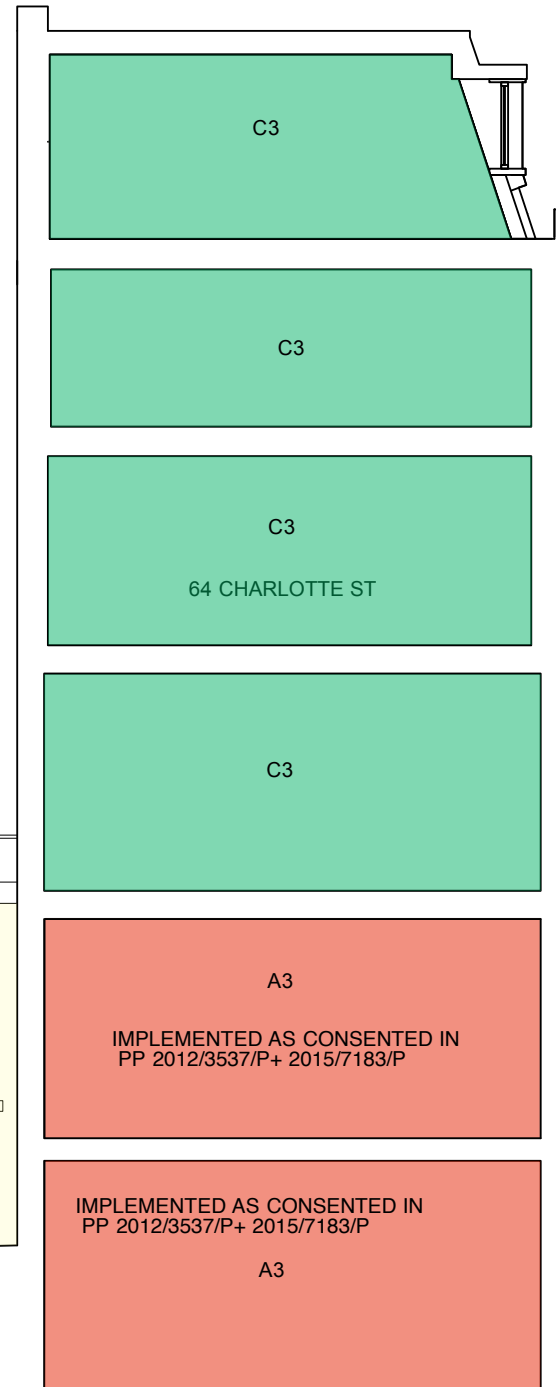
Project 1329: 64/66 CHARLOTTE STREET LONDON W1T 4QD		
Drawing Title		
PROPOSED ROOF PLAN		
Dwg No.	1329-PA- 4B-022	Revision
Scale	1:100 @ A3	Date MAY 2017
		Drawn by P



3 Charlotte Mews  
(rear )



B1



C3

C3

C3

64 CHARLOTTE ST

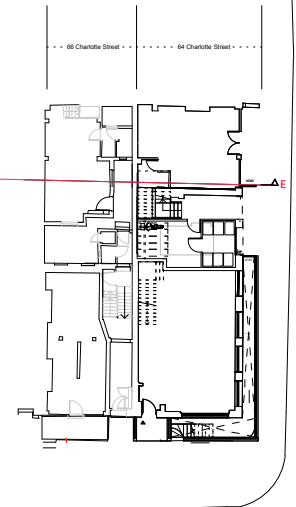
C3

A3

IMPLEMENTED AS CONSENTED IN  
PP 2012/3537/P+ 2015/7183/P

A3

IMPLEMENTED AS CONSENTED IN  
PP 2012/3537/P+ 2015/7183/P



TOTTENHAM STREET

68 Charlotte Street

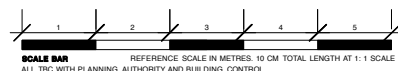
66 Charlotte Street

64 Charlotte Street

**Planning Application 4 B**

- A1 SHOP
- A3 FOOD AND DRINK
- B1 OFFICE
- C3 DWELLING

NEW BUILD



Roland Cowan Architects

99 Westbourne Park Villas London W2 5ED

T 0207 229 5599 E info@rca.uk.com

F 0207 229 5566 W www.rca.uk.com

DO NOT SCALE FROM THIS DRAWING. USE FIGURED DIMENSIONS ONLY. ANY DISCREPANCIES ARE TO BE REPORTED TO RCA IMMEDIATELY. PRIOR TO THE EXECUTION OF THE WORKS ON SITE ALL DIMENSIONS TO BE VERIFIED ON SITE BEFORE ANY WORK IS PUT IN HAND.

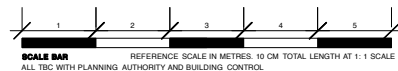
Project 1329: 64/66 CHARLOTTE STREET LONDON W1T 4QD		
Drawing Title <b>EXISTING SECTION E</b>		
Dwg No. 1329-PA- 4B-023	Revision	
Scale <b>1:100 @ A3</b>	Date <b>MAY 2017</b>	Drawn by <b>P</b>





- A1 SHOP
- A3 FOOD AND DRINK
- B1 OFFICE
- C3 DWELLING

NEW BUILD



Roland Cowan Architects

99 Westbourne Park Villas London W2 5ED

T 0207 229 5599 E info@rca.uk.com

F 0207 229 5566 W www.rca.uk.com

Project 1329: 64/66 CHARLOTTE STREET LONDON W1T 4QD

Drawing Title

PROPOSED SECTION E

Dwg No. 1329-PA- 4B-024

Revision

Scale 1:100 @ A3

Date MAY 2017

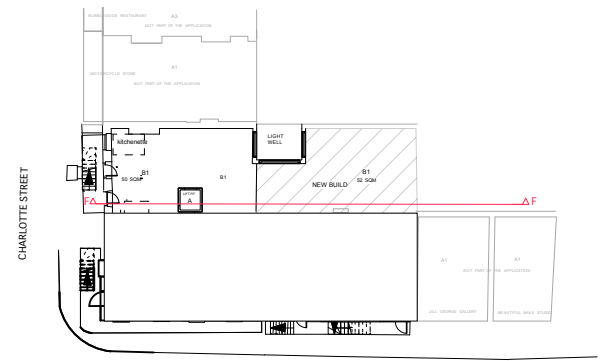
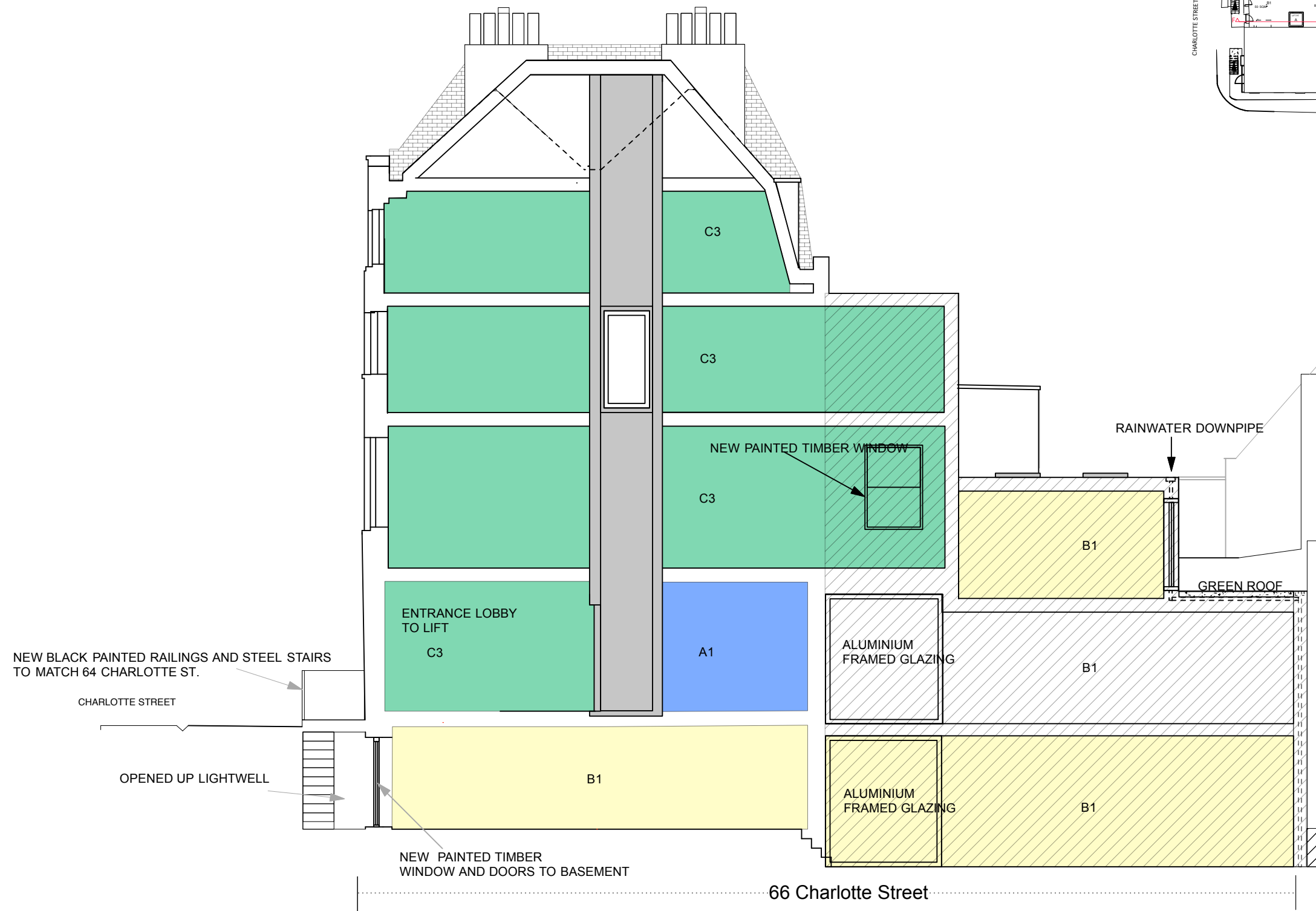
Drawn by P

DO NOT SCALE FROM THIS DRAWING. USE FIGURED DIMENSIONS ONLY. ANY DISCREPANCIES ARE TO BE REPORTED TO RCA IMMEDIATELY. PRIOR TO THE EXECUTION OF THE WORKS ON SITE ALL DIMENSIONS TO BE VERIFIED ON SITE BEFORE ANY WORK IS PUT IN HAND.



Planning Application 4 B

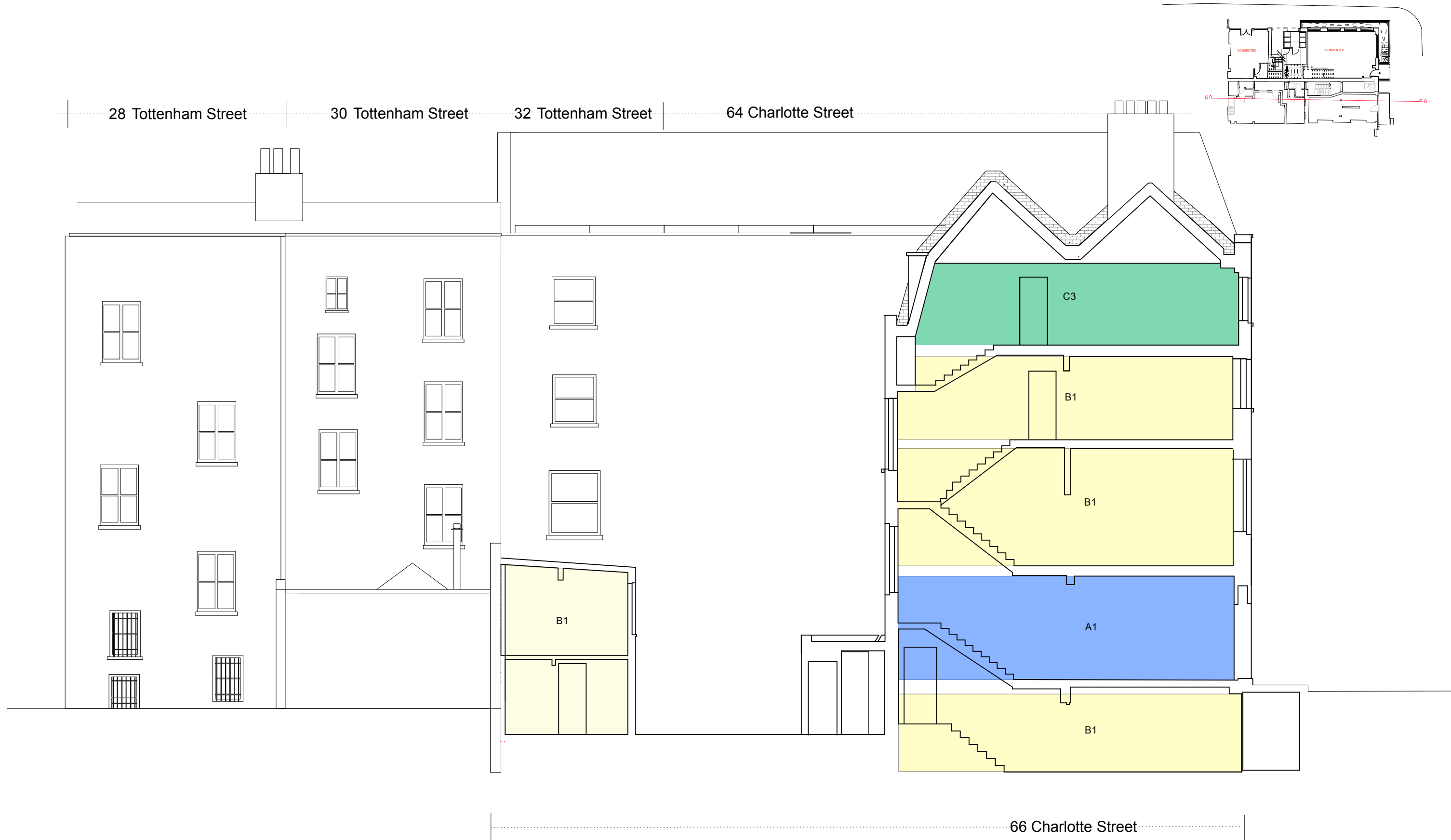
<div><div><div></div><div>A1 SHOP</div></div><div><div></div><div>A3 FOOD AND DRINK</div></div><div><div></div><div>B1 OFFICE</div></div><div><div></div><div>C3 DWELLING</div></div></div> <td data-cs="2" data-kind="parent"><div><div></div><div>NEW BUILD</div></div></td> <td data-cs="2" data-kind="parent"><div><div><div></div><div>1</div></div><div><div></div><div>2</div></div><div><div></div><div>3</div></div><div><div></div><div>4</div></div><div><div></div><div>5</div></div></div><div><div>SCALE BAR</div><div>REFERENCE SCALE IN METRES: 10 CM TOTAL LENGTH AT 1:1 SCALE</div><div>ALL TBC WITH PLANNING AUTHORITY AND BUILDING CONTROL.</div></div></td> <td data-cs="2" data-kind="parent"><div><div><div></div><div>Roland Cowan Architects</div><div>99 Westbourne Park Villas London W2 5ED</div><div>T 0207 229 5599 E info@rca.uk.com</div><div>F 0207 229 5566 W www.rca.uk.com</div></div><div><div>DO NOT SCALE FROM THIS DRAWING. USE FIGURED DIMENSIONS ONLY. ANY DISCREPANCIES ARE TO BE REPORTED TO RCA IMMEDIATELY. PRIOR TO THE EXECUTION OF THE WORKS ON SITE ALL DIMENSIONS TO BE VERIFIED ON SITE BEFORE ANY WORK IS PUT IN HAND.</div></div></div></td> <td data-cs="3" data-kind="parent"><div><div><div>Project</div><div>1329: 64/66 CHARLOTTE STREET LONDON W1T 4QD</div></div><div><div>Drawing Title</div><div>EXISTING SECTION F</div></div><div><div><div>Dwg No.</div><div>1329-PA- 4B-025</div></div><div><div>Revision</div><div></div></div></div><div><div><div>Scale</div><div>1:100 @ A3</div></div><div><div>Date</div><div>MAY 2017</div></div><div><div>Drawn by</div><div>P</div></div></div></div></td>	<div><div></div><div>NEW BUILD</div></div>	<div><div><div></div><div>1</div></div><div><div></div><div>2</div></div><div><div></div><div>3</div></div><div><div></div><div>4</div></div><div><div></div><div>5</div></div></div> <div><div>SCALE BAR</div><div>REFERENCE SCALE IN METRES: 10 CM TOTAL LENGTH AT 1:1 SCALE</div><div>ALL TBC WITH PLANNING AUTHORITY AND BUILDING CONTROL.</div></div>	<div><div><div></div><div>Roland Cowan Architects</div><div>99 Westbourne Park Villas London W2 5ED</div><div>T 0207 229 5599 E info@rca.uk.com</div><div>F 0207 229 5566 W www.rca.uk.com</div></div><div><div>DO NOT SCALE FROM THIS DRAWING. USE FIGURED DIMENSIONS ONLY. ANY DISCREPANCIES ARE TO BE REPORTED TO RCA IMMEDIATELY. PRIOR TO THE EXECUTION OF THE WORKS ON SITE ALL DIMENSIONS TO BE VERIFIED ON SITE BEFORE ANY WORK IS PUT IN HAND.</div></div></div>	<div><div><div>Project</div><div>1329: 64/66 CHARLOTTE STREET LONDON W1T 4QD</div></div><div><div>Drawing Title</div><div>EXISTING SECTION F</div></div><div><div><div>Dwg No.</div><div>1329-PA- 4B-025</div></div><div><div>Revision</div><div></div></div></div><div><div><div>Scale</div><div>1:100 @ A3</div></div><div><div>Date</div><div>MAY 2017</div></div><div><div>Drawn by</div><div>P</div></div></div></div>
--	--	--	---	---



Planning Application 4 B

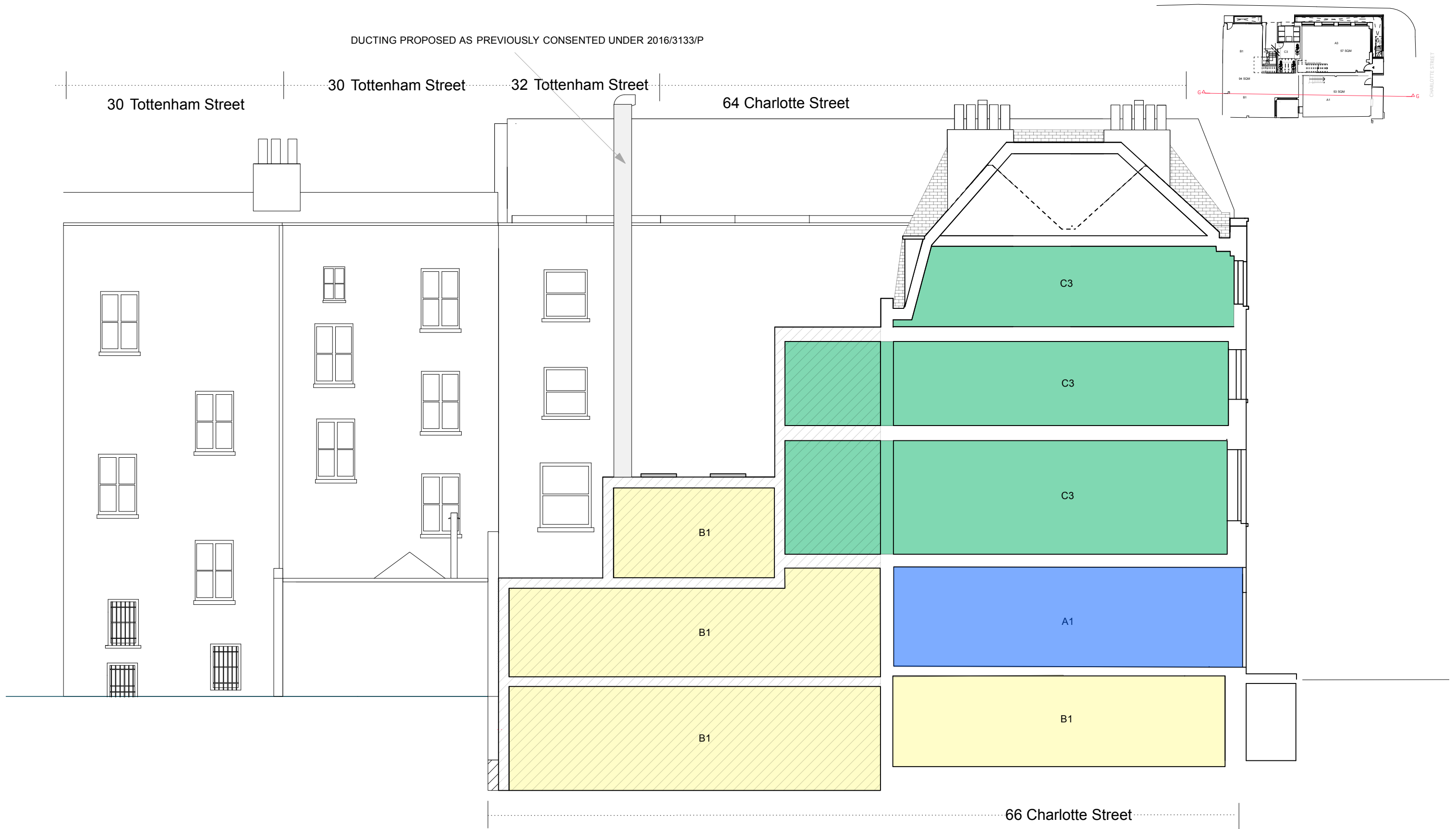
<div><div><div>A1 SHOP</div><div>A3 FOOD AND DRINK</div><div>B1 OFFICE</div><div>C3 DWELLING</div></div><div><div>NEW BUILD</div></div></div> <div><div>SCALE BAR</div><div>REFERENCE SCALE IN METRES: 10 CM TOTAL LENGTH AT 1:1 SCALE</div><div>ALL TBC WITH PLANNING AUTHORITY AND BUILDING CONTROL</div></div>	<div><div><div>Roland Cowan Architects</div><div>99 Westbourne Park Villas London W2 5ED</div><div>T 0207 229 5599 E info@rca.uk.com</div><div>F 0207 229 5566 W www.rca.uk.com</div></div><div>DO NOT SCALE FROM THIS DRAWING. USE FIGURED DIMENSIONS ONLY. ANY DISCREPANCIES ARE TO BE REPORTED TO RCA IMMEDIATELY. PRIOR TO THE EXECUTION OF THE WORKS ON SITE ALL DIMENSIONS TO BE VERIFIED ON SITE BEFORE ANY WORK IS PUT IN HAND.</div></div>	Project 1329: 64/66 CHARLOTTE STREET LONDON W1T 4QD		
		Drawing Title <b>PROPOSED SECTION F</b>		
		Dwg No. 1329-PA- 4B-026		Revision
		Scale <b>1:100 @ A3</b>	Date <b>MAY 2017</b>	Drawn by <b>P</b>





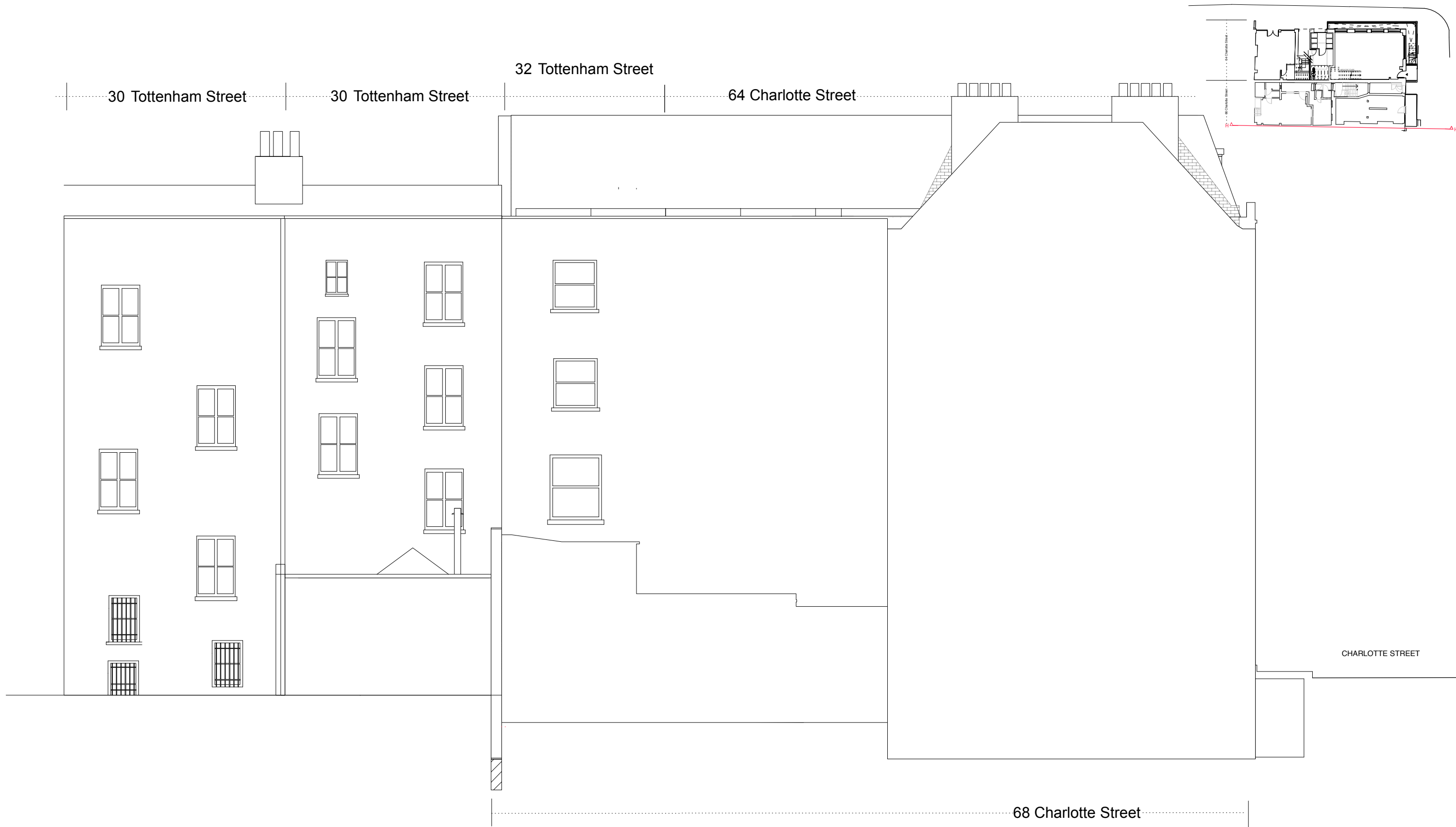
Planning Application 4 B

<div><div><div></div><div>A1 SHOP</div></div><div><div></div><div>A3 FOOD AND DRINK</div></div><div><div></div><div>B1 OFFICE</div></div><div><div></div><div>C3 DWELLING</div></div></div> <td data-cs="2" data-kind="parent"><div><div></div><div>NEW BUILD</div></div></td> <td data-cs="2" data-kind="parent"><div><div><div></div><div>1</div></div><div><div></div><div>2</div></div><div><div></div><div>3</div></div><div><div></div><div>4</div></div><div><div></div><div>5</div></div></div><div><div>SCALE BAR</div><div>REFERENCE SCALE IN METRES: 10 CM TOTAL LENGTH AT 1:1 SCALE</div><div>ALL TBC WITH PLANNING AUTHORITY AND BUILDING CONTROL.</div></div></td> <td data-cs="2" data-kind="parent"><div><div><div></div><div>Roland Cowan Architects</div><div>99 Westbourne Park Villas London W2 5ED</div><div>T 0207 229 5599 E info@rca.uk.com</div><div>F 0207 229 5566 W www.rca.uk.com</div></div><div><div>DO NOT SCALE FROM THIS DRAWING. USE FIGURED DIMENSIONS ONLY. ANY DISCREPANCIES ARE TO BE REPORTED TO RCA IMMEDIATELY. PRIOR TO THE EXECUTION OF THE WORKS ON SITE ALL DIMENSIONS TO BE VERIFIED ON SITE BEFORE ANY WORK IS PUT IN HAND.</div></div></div></td> <td data-cs="3" data-kind="parent"><div><div><div>Project</div><div>1329: 64/66 CHARLOTTE STREET LONDON W1T 4QD</div></div><div><div>Drawing Title</div><div>EXISTING SECTION G</div></div><div><div><div>Dwg No.</div><div>1329-PA- 4B-027</div></div><div><div>Revision</div><div></div></div></div><div><div><div>Scale</div><div>1:100 @ A3</div></div><div><div>Date</div><div>MAY 2017</div></div><div><div>Drawn by</div><div>P</div></div></div></div></td>	<div><div></div><div>NEW BUILD</div></div>	<div><div><div></div><div>1</div></div><div><div></div><div>2</div></div><div><div></div><div>3</div></div><div><div></div><div>4</div></div><div><div></div><div>5</div></div></div> <div><div>SCALE BAR</div><div>REFERENCE SCALE IN METRES: 10 CM TOTAL LENGTH AT 1:1 SCALE</div><div>ALL TBC WITH PLANNING AUTHORITY AND BUILDING CONTROL.</div></div>	<div><div><div></div><div>Roland Cowan Architects</div><div>99 Westbourne Park Villas London W2 5ED</div><div>T 0207 229 5599 E info@rca.uk.com</div><div>F 0207 229 5566 W www.rca.uk.com</div></div><div><div>DO NOT SCALE FROM THIS DRAWING. USE FIGURED DIMENSIONS ONLY. ANY DISCREPANCIES ARE TO BE REPORTED TO RCA IMMEDIATELY. PRIOR TO THE EXECUTION OF THE WORKS ON SITE ALL DIMENSIONS TO BE VERIFIED ON SITE BEFORE ANY WORK IS PUT IN HAND.</div></div></div>	<div><div><div>Project</div><div>1329: 64/66 CHARLOTTE STREET LONDON W1T 4QD</div></div><div><div>Drawing Title</div><div>EXISTING SECTION G</div></div><div><div><div>Dwg No.</div><div>1329-PA- 4B-027</div></div><div><div>Revision</div><div></div></div></div><div><div><div>Scale</div><div>1:100 @ A3</div></div><div><div>Date</div><div>MAY 2017</div></div><div><div>Drawn by</div><div>P</div></div></div></div>
--	--	--	---	---



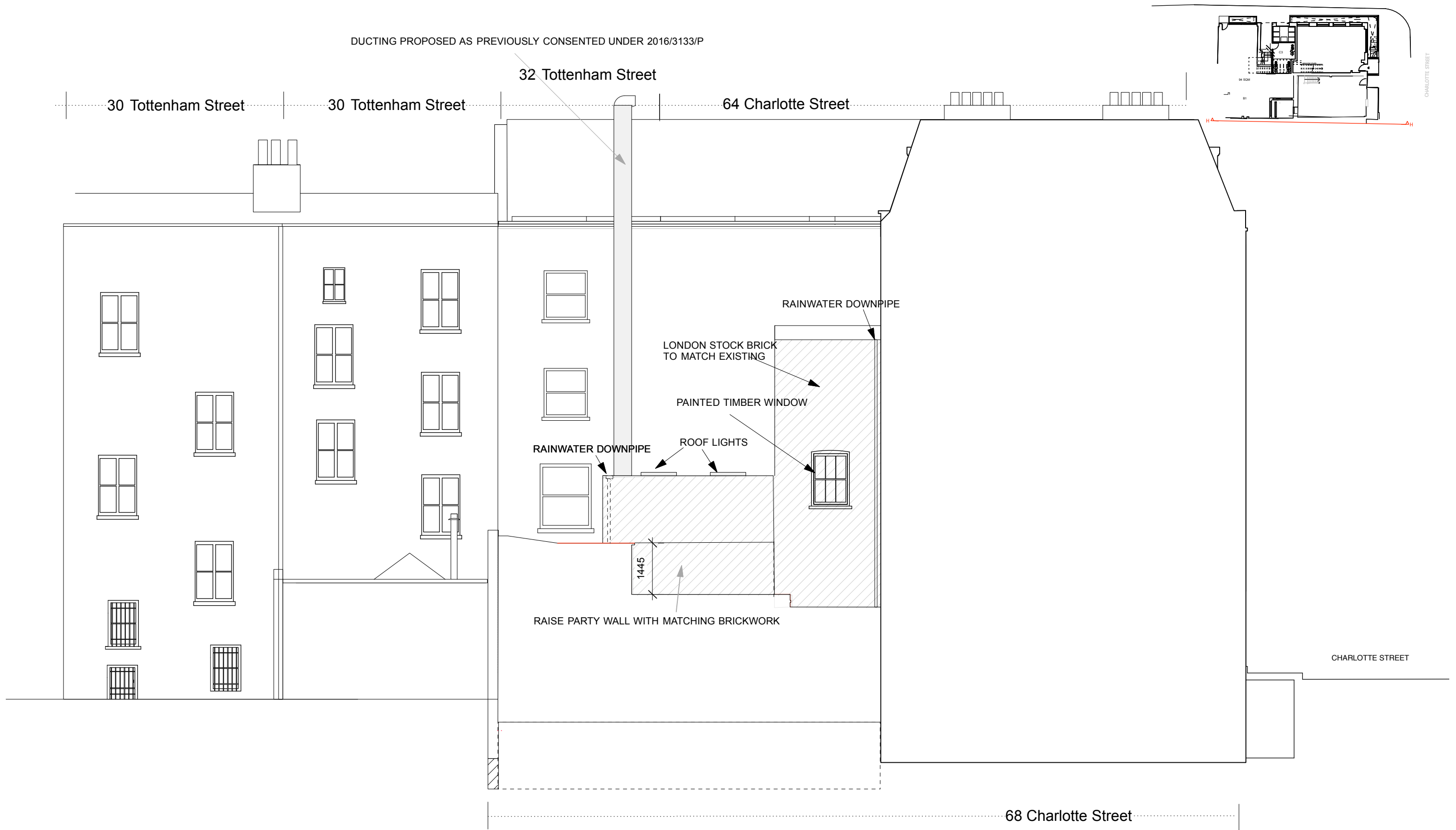
Planning Application 4 B

<div><div><div></div><div>A1 SHOP</div></div><div><div></div><div>A3 FOOD AND DRINK</div></div><div><div></div><div>B1 OFFICE</div></div><div><div></div><div>C3 DWELLING</div></div></div> <div><div></div><div>NEW BUILD</div></div>		<div><div><div></div><div>1</div><div>2</div><div>3</div><div>4</div><div>5</div></div><div>SCALE BAR</div><div>REFERENCE SCALE IN METRES: 10 CM TOTAL LENGTH AT 1:1 SCALE</div><div>ALL TBC WITH PLANNING AUTHORITY AND BUILDING CONTROL.</div></div>		<div><div><div></div><div></div></div><div>Roland Cowan Architects</div><div>99 Westbourne Park Villas London W2 5ED</div><div>T 0207 229 5599 E info@rca.uk.com</div><div>F 0207 229 5566 W www.rca.uk.com</div><div>DO NOT SCALE FROM THIS DRAWING. USE FIGURED DIMENSIONS ONLY. ANY DISCREPANCIES ARE TO BE REPORTED TO RCA IMMEDIATELY. PRIOR TO THE EXECUTION OF THE WORKS ON SITE ALL DIMENSIONS TO BE VERIFIED ON SITE BEFORE ANY WORK IS PUT IN HAND.</div></div>		<div><div><div>Project</div><div>1329: 64/66 CHARLOTTE STREET LONDON W1T 4QD</div></div><div><div>Drawing Title</div><div>PROPOSED SECTION G</div></div><div><div><div>Dwg No.</div><div>1329-PA- 4B-028</div></div><div><div>Scale</div><div>1:100 @ A3</div></div></div><div><div><div>Revision</div><div></div></div><div><div>Date</div><div>MAY 2017</div></div><div><div>Drawn by</div><div>P</div></div></div></div>
--	--	--	--	---	--	---



Planning Application 4 B

<div><div></div>A1 SHOP</div> <div><div></div>A3 FOOD AND DRINK</div> <div><div></div>B1 OFFICE</div> <div><div></div>C3 DWELLING</div>	<div><div></div>NEW BUILD</div>	<div><div></div><div>12</div><div>18</div><div>24</div><div>30</div><div>36</div><div>42</div><div>48</div><div>54</div><div>60</div><div>66</div><div>72</div><div>78</div><div>84</div><div>90</div><div>96</div><div>102</div><div>108</div><div>114</div><div>120</div><div>126</div><div>132</div><div>138</div><div>144</div><div>150</div><div>156</div><div>162</div><div>168</div><div>174</div><div>180</div><div>186</div><div>192</div><div>198</div><div>204</div><div>210</div><div>216</div><div>222</div><div>228</div><div>234</div><div>240</div><div>246</div><div>252</div><div>258</div><div>264</div><div>270</div><div>276</div><div>282</div><div>288</div><div>294</div><div>300</div><div>306</div><div>312</div><div>318</div><div>324</div><div>330</div><div>336</div><div>342</div><div>348</div><div>354</div><div>360</div><div>366</div><div>372</div><div>378</div><div>384</div><div>390</div><div>396</div><div>402</div><div>408</div><div>414</div><div>420</div><div>426</div><div>432</div><div>438</div><div>444</div><div>450</div><div>456</div><div>462</div><div>468</div><div>474</div><div>480</div><div>486</div><div>492</div><div>498</div><div>504</div><div>510</div><div>516</div><div>522</div><div>528</div><div>534</div><div>540</div><div>546</div><div>552</div><div>558</div><div>564</div><div>570</div><div>576</div><div>582</div><div>588</div><div>594</div><div>600</div><div>606</div><div>612</div><div>618</div><div>624</div><div>630</div><div>636</div><div>642</div><div>648</div><div>654</div><div>660</div><div>666</div><div>672</div><div>678</div><div>684</div><div>690</div><div>696</div><div>702</div><div>708</div><div>714</div><div>720</div><div>726</div><div>732</div><div>738</div><div>744</div><div>750</div><div>756</div><div>762</div><div>768</div><div>774</div><div>780</div><div>786</div><div>792</div><div>798</div><div>804</div><div>810</div><div>816</div><div>822</div><div>828</div><div>834</div><div>840</div><div>846</div><div>852</div><div>858</div><div>864</div><div>870</div><div>876</div><div>882</div><div>888</div><div>894</div><div>900</div><div>906</div><div>912</div><div>918</div><div>924</div><div>930</div><div>936</div><div>942</div><div>948</div><div>954</div><div>960</div><div>966</div><div>972</div><div>978</div><div>984</div><div>990</div><div>996</div><div>1000</div><div>1006</div><div>1012</div><div>1018</div><div>1024</div><div>1030</div><div>1036</div><div>1042</div><div>1048</div><div>1054</div><div>1060</div><div>1066</div><div>1072</div><div>1078</div><div>1084</div><div>1090</div><div>1096</div><div>1102</div><div>1108</div><div>1114</div><div>1120</div><div>1126</div><div>1132</div><div>1138</div><div>1144</div><div>1150</div><div>1156</div><div>1162</div><div>1168</div><div>1174</div><div>1180</div><div>1186</div><div>1192</div><div>1198</div><div>1204</div><div>1210</div><div>1216</div><div>1222</div><div>1228</div><div>1234</div><div>1240</div><div>1246</div><div>1252</div><div>1258</div><div>1264</div><div>1270</div><div>1276</div><div>1282</div><div>1288</div><div>1294</div><div>1300</div><div>1306</div><div>1312</div><div>1318</div><div>1324</div><div>1330</div><div>1336</div><div>1342</div><div>1348</div><div>1354</div><div>1360</div><div>1366</div><div>1372</div><div>1378</div><div>1384</div><div>1390</div><div>1396</div><div>1402</div><div>1408</div><div>1414</div><div>1420</div><div>1426</div><div>1432</div><div>1438</div><div>1444</div><div>1450</div><div>1456</div><div>1462</div><div>1468</div><div>1474</div><div>1480</div><div>1486</div><div>1492</div><div>1498</div><div>1504</div><div>1510</div><div>1516</div><div>1522</div><div>1528</div><div>1534</div><div>1540</div><div>1546</div><div>1552</div><div>1558</div><div>1564</div><div>1570</div><div>1576</div><div>1582</div><div>1588</div><div>1594</div><div>1600</div><div>1606</div><div>1612</div><div>1618</div><div>1624</div><div>1630</div><div>1636</div><div>1642</div><div>1648</div><div>1654</div><div>1660</div><div>1666</div><div>1672</div><div>1678</div><div>1684</div><div>1690</div><div>1696</div><div>1702</div><div>1708</div><div>1714</div><div>1720</div><div>1726</div><div>1732</div><div>1738</div><div>1744</div><div>1750</div><div>1756</div><div>1762</div><div>1768</div><div>1774</div><div>1780</div><div>1786</div><div>1792</div><div>1798</div><div>1804</div><div>1810</div><div>1816</div><div>1822</div><div>1828</div><div>1834</div><div>1840</div><div>1846</div><div>1852</div><div>1858</div><div>1864</div><div>1870</div><div>1876</div><div>1882</div><div>1888</div><div>1894</div><div>1900</div><div>1906</div><div>1912</div><div>1918</div><div>1924</div><div>1930</div><div>1936</div><div>1942</div><div>1948</div><div>1954</div><div>1960</div><div>1966</div><div>1972</div><div>1978</div><div>1984</div><div>1990</div><div>1996</div><div>2000</div><div>2006</div><div>2012</div><div>2018</div><div>2024</div><div>2030</div><div>2036</div><div>2042</div><div>2048</div><div>2054</div><div>2060</div><div>2066</div><div>2072</div><div>2078</div><div>2084</div><div>2090</div><div>2096</div><div>2102</div><div>2108</div><div>2114</div><div>2120</div><div>2126</div><div>2132</div><div>2138</div><div>2144</div><div>2150</div><div>2156</div><div>2162</div><div>2168</div><div>2174</div><div>2180</div><div>2186</div><div>2192</div><div>2198</div><div>2204</div><div>2210</div><div>2216</div><div>2222</div><div>2228</div><div>2234</div><div>2240</div><div>2246</div><div>2252</div><div>2258</div><div>2264</div><div>2270</div><div>2276</div><div>2282</div><div>2288</div><div>2294</div><div>2300</div><div>2306</div><div>2312</div><div>2318</div><div>2324</div><div>2330</div><div>2336</div><div>2342</div><div>2348</div><div>2354</div><div>2360</div><div>2366</div><div>2372</div><div>2378</div><div>2384</div><div>2390</div><div>2396</div><div>2402</div><div>2408</div><div>2414</div><div>2420</div><div>2426</div><div>2432</div><div>2438</div><div>2444</div><div>2450</div><div>2456</div><div>2462</div><div>2468</div><div>2474</div><div>2480</div><div>2486</div><div>2492</div><div>2498</div><div>2504</div><div>2510</div><div>2516</div><div>2522</div><div>2528</div><div>2534</div><div>2540</div><div>2546</div><div>2552</div><div>2558</div><div>2564</div><div>2570</div><div>2576</div><div>2582</div><div>2588</div><div>2594</div><div>2600</div><div>2606</div><div>2612</div><div>2618</div><div>2624</div><div>2630</div><div>2636</div><div>2642</div><div>2648</div><div>2654</div><div>2660</div><div>2666</div><div>2672</div><div>2678</div><div>2684</div><div>2690</div><div>2696</div><div>2702</div><div>2708</div><div>2714</div><div>2720</div><div>2726</div><div>2732</div><div>2738</div><div>2744</div><div>2750</div><div>2756</div><div>2762</div><div>2768</div><div>2774</div><div>2780</div><div>2786</div><div>2792</div><div>2798</div><div>2804</div><div>2810</div><div>2816</div><div>2822</div><div>2828</div><div>2834</div><div>2840</div><div>2846</div><div>2852</div><div>2858</div><div>2864</div><div>2870</div><div>2876</div><div>2882</div><div>2888</div><div>2894</div><div>2900</div><div>2906</div><div>2912</div><div>2918</div><div>2924</div><div>2930</div><div>2936</div><div>2942</div><div>2948</div><div>2954</div><div>2960</div><div>2966</div><div>2972</div><div>2978</div><div>2984</div><div>2990</div><div>2996</div><div>3000</div><div>3006</div><div>3012</div><div>3018</div><div>3024</div><div>3030</div><div>3036</div><div>3042</div><div>3048</div><div>3054</div><div>3060</div><div>3066</div><div>3072</div><div>3078</div><div>3084</div><div>3090</div><div>3096</div><div>3102</div><div>3108</div><div>3114</div><div>3120</div><div>3126</div><div>3132</div><div>3138</div><div>3144</div><div>3150</div><div>3156</div><div>3162</div><div>3168</div><div>3174</div><div>3180</div><div>3186</div><div>3192</div><div>3198</div><div>3204</div><div>3210</div><div>3216</div><div>3222</div><div>3228</div><div>3234</div><div>3240</div><div>3246</div><div>3252</div><div>3258</div><div>3264</div><div>3270</div><div>3276</div><div>3282</div><div>3288</div><div>3294</div><div>3300</div><div>3306</div><div>3312</div><div>3318</div><div>3324</div><div>3330</div><div>3336</div><div>3342</div><div>3348</div><div>3354</div><div>3360</div><div>3366</div><div>3372</div><div>3378</div><div>3384</div><div>3390</div><div>3396</div><div>3402</div><div>3408</div><div>3414</div><div>3420</div><div>3426</div><div>3432</div><div>3438</div><div>3444</div><div>3450</div><div>3456</div><div>3462</div><div>3468</div><div>3474</div><div>3480</div><div>3486</div><div>3492</div><div>3498</div><div>3504</div><div>3510</div><div>3516</div><div>3522</div><div>3528</div><div>3534</div><div>3540</div><div>3546</div><div>3552</div><div>3558</div><div>3564</div><div>3570</div><div>3576</div><div>3582</div><div>3588</div><div>3594</div><div>3600</div><div>3606</div><div>3612</div><div>3618</div><div>3624</div><div>3630</div><div>3636</div><div>3642</div><div>3648</div><div>3654</div><div>3660</div><div>3666</div><div>3672</div><div>3678</div><div>3684</div><div>3690</div><div>3696</div><div>3702</div><div>3708</div><div>3714</div><div>3720</div><div>3726</div><div>3732</div><div>3738</div><div>3744</div><div>3750</div><div>3756</div><div>3762</div><div>3768</div><div>3774</div><div>3780</div><div>3786</div><div>3792</div><div>3798</div><div>3804</div><div>3810</div><div>3816</div><div>3822</div><div>3828</div><div>3834</div><div>3840</div><div>3846</div><div>3852</div><div>3858</div><div>3864</div><div>3870</div><div>3876</div><div>3882</div><div>3888</div><div>3894</div><div>3900</div><div>3906</div><div>3912</div><div>3918</div><div>3924</div><div>3930</div><div>3936</div><div>3942</div><div>3948</div><div>3954</div><div>3960</div><div>3966</div><div>3972</div><div>3978</div><div>3984</div><div>3990</div><div>3996</div><div>4000</div><div>4006</div><div>4012</div><div>4018</div><div>4024</div><div>4030</div><div>4036</div><div>4042</div><div>4048</div><div>4054</div><div>4060</div><div>4066</div><div>4072</div><div>4078</div><div>4084</div><div>4090</div><div>4096</div><div>4102</div><div>4108</div><div>4114</div><div>4120</div><div>4126</div><div>4132</div><div>4138</div><div>4144</div><div>4150</div><div>4156</div><div>4162</div><div>4168</div><div>4174</div><div>4180</div><div>4186</div><div>4192</div><div>4198</div><div>4204</div><div>4210</div><div>4216</div><div>4222</div><div>4228</div><div>4234</div><div>4240</div><div>4246</div><div>4252</div><div>4258</div><div>4264</div><div>4270</div><div>4276</div><div>4282</div><div>4288</div><div>4294</div><div>4300</div><div>4306</div><div>4312</div><div>4318</div><div>4324</div><div>4330</div><div>4336</div><div>4342</div><div>4348</div><div>4354</div><div>4360</div><div>4366</div><div>4372</div><div>4378</div><div>4384</div><div>4390</div><div>4396</div><div>4402</div><div>4408</div><div>4414</div><div>4420</div><div>4426</div><div>4432</div><div>4438</div><div>4444</div><div>4450</div><div>4456</div><div>4462</div><div>4468</div><div>4474</div><div>4480</div><div>4486</div><div>4492</div><div>4498</div><div>4504</div><div>4510</div><div>4516</div><div>4522</div><div>4528</div><div>4534</div><div>4540</div><div>4546</div><div>4552</div><div>4558</div><div>4564</div><div>4570</div><div>4576</div><div>4582</div><div>4588</div><div>4594</div><div>4600</div><div>4606</div><div>4612</div><div>4618</div><div>4624</div><div>4630</div><div>4636</div><div>4642</div><div>4648</div><div>4654</div><div>4660</div><div>4666</div><div>4672</div><div>4678</div><div>4684</div><div>4690</div><div>4696</div><div>4702</div><div>4708</div><div>4714</div><div>4720</div><div>4726</div><div>4732</div><div>4738</div><div>4744</div><div>4750</div><div>4756</div><div>4762</div><div>4768</div><div>4774</div><div>4780</div><div>4786</div><div>4792</div><div>4798</div><div>4804</div><div>4810</div><div>4816</div><div>4822</div><div>4828</div><div>4834</div><div>4840</div><div>4846</div><div>4852</div><div>4858</div><div>4864</div><div>4870</div><div>4876</div><div>4882</div><div>4888</div><div>4894</div><div>4900</div><div>4906</div><div>4912</div><div>4918</div><div>4924</div><div>4930</div><div>4936</div><div>4942</div><div>4948</div><div>4954</div><div>4960</div><div>4966</div><div>4972</div><div>4978</div><div>4984</div><div>4990</div><div>4996</div><div>5000</div><div>5006</div><div>5012</div><div>5018</div><div>5024</div><div>5030</div><div>5036</div><div>5042</div><div>5048</div><div>5054</div><div>5060</div><div>5066</div><div>5072</div><div>5078</div><div>5084</div><div>5090</div><div>5096</div><div>5102</div><div>5108</div><div>5114</div><div>5120</div><div>5126</div><div>5132</div><div>5138</div><div>5144</div><div>5150</div><div>5156</div><div>5162</div><div>5168</div><div>5174</div><div>5180</div><div>5186</div><div>5192</div><div>5198</div><div>5204</div><div>5210</div><div>5216</div><div>5222</div><div>5228</div><div>5234</div><div>5240</div><div>5246</div><div>5252</div><div>5258</div><div>5264</div><div>5270</div><div>5276</div><div>5282</div><div>5288</div><div>5294</div><div>5300</div><div>5306</div><div>5312</div><div>5318</div><div>5324</div><div>5330</div><div>5336</div><div>5342</div><div>5348</div><div>5354</div><div>5360</div><div>5366</div><div>5372</div><div>5378</div><div>5384</div><div>5390</div><div>5396</div><div>5402</div><div>5408</div><div>5414</div><div>5420</div><div>5426</div><div>5432</div><div>5438</div><div>5444</div><div>5450</div><div>5456</div><div>5462</div><div>5468</div><div>5474</div><div>5480</div><div>5486</div><div>5492</div><div>5498</div><div>5504</div><div>5510</div><div>5516</div><div>5522</div><div>5528</div><div>5534</div><div>5540</div><div>5546</div><div>5552</div><div>5558</div><div>5564</div><div>5570</div><div>5576</div><div>5582</div><div>5588</div><div>5594</div><div>5600</div><div>5606</div><div>5612</div><div>5618</div><div>5624</div><div>5630</div><div>5636</div><div>5642</div><div>5648</div><div>5654</div><div>5660</div><div>5666</div><div>5672</div><div>5678</div><div>5684</div><div>5690</div><div>5696</div><div>5702</div><div>5708</div><div>5714</div><div>5720</div><div>5726</div><div>5732</div><div>5738</div><div>5744</div><div>5750</div><div>5756</div><div>5762</div><div>5768</div><div>5774</div><div>5780</div><div>5786</div><div>5792</div><div>5798</div><div>5804</div><div>5810</div><div>5816</div><div>5822</div><div>5828</div><div>5834</div><div>5840</div><div>5846</div><div>5852</div><div>5858</div><div>5864</div><div>5870</div><div>5876</div><div>5882</div><div>5888</div><div>5894</div><div>5900</div><div>5906</div><div>5912</div><div>5918</div><div>5924</div><div>5930</div><div>5936</div><div>5942</div><div>5948</div><div>5954</div><div>5960</div><div>5966</div><div>5972</div><div>5978</div><div>5984</div><div>5990</div><div>5996</div><div>6000</div><div>6006</div><div>6012</div><div>6018</div><div>6024</div><div>6030</div><div>6036</div><div>6042</div><div>6048</div><div>6054</div><div>6060</div><div>6066</div><div>6072</div><div>6078</div><div>6084</div><div>6090</div><div>6096</div><div>6102</div><div>6108</div><div>6114</div><div>6120</div><div>6126</div><div>6132</div><div>6138</div><div>6144</div><div>6150</div><div>6156</div><div>6162</div><div>6168</div><div>6174</div><div>6180</div><div>6186</div><div>6192</div><div>6198</div><div>6204</div><div>6210</div><div>6216</div><div>6222</div><div>6228</div><div>6234</div><div>6240</div><div>6246</div><div>6252</div><div>6258</div><div>6264</div><div>6270</div><div>6276</div><div>6282</div><div>6288</div><div>6294</div><div>6300</div><div>6306</div><div>6312</div><div>6318</div><div>6324</div><div>6330</div><div>6336</div><div>6342</div><div>6348</div><div>6354</div><div>6360</div><div>6366</div><div>6372</div><div>6378</div><div>6384</div><div>6390</div><div>6396</div><div>6402</div><div>6408</div><div>6414</div><div>6420</div><div>6426</div><div>6432</div><div>6438</div><div>6444</div><div>6450</div><div>6456</div><div>6462</div><div>6468</div><div>6474</div><div>6480</div><div>6486</div><div>6492</div><div>6498</div><div>6504</div><div>6510</div><div>6516</div><div>6522</div><div>6528</div><div>6534</div><div>6540</div><div>6546</div><div>6552</div><div>6558</div><div>6564</div><div>6570</div><div>6576</div><div>6582</div><div>6588</div><div>6594</div><div>6600</div><div>6606</div><div>6612</div><div>6618</div><div>6624</div><div>6630</div><div>6636</div><div>6642</div><div>6648</div><div>6654</div><div>6660</div><div>6666</div><div>6672</div><div>6678</div><div>6684</div><div>6690</div><div>6696</div><div>6702</div><div>6708</div><div>6714</div><div>6720</div><div>6726</div><div>6732</div><div>6738</div><div>6744</div><div>6750</div><div>6756</div><div>6762</div><div>6768</div><div>6774</div><div>6780</div><div>6786</div><div>6792</div><div>6798</div><div>6804</div><div>6810</div><div>6816</div><div>6822</div><div>6828</div><div>6834</div><div>6840</div><div>6846</div><div>6852</div><div>6858</div><div>6864</div><div>6870</div><div>6876</div><div>6882</div><div>6888</div><div>6894</div><div>6900</div><div>6906</div><div>6912</div><div>6918</div><div>6924</div><div>6930</div><div>6936</div><div>6942</div><div>6948</div><div>6954</div><div>6960</div><div>6966</div><div>6972</div><div>6978</div><div>6984</div><div>6990</div><div>6996</div><div>7000</div><div>7006</div><div>7012</div><div>7018</div><div>7024</div><div>7030</div><div>7036</div><div>7042</div><div>7048</div><div>7054</div><div>7060</div><div>7066</div><div>7072</div><div>7078</div><div>7084</div><div>7090</div><div>7096</div><div>7102</div><div>7108</div><div>7114</div><div>7120</div><div>7126</div><div>7132</div><div>7138</div><div>7144</div><div>7150</div><div>7156</div><div>7162</div><div>7168</div><div>7174</div><div>7180</div><div>7186</div><div>7192</div><div>7198</div><div>7204</div><div>7210</div><div>7216</div><div>7222</div><div>7228</div><div>7234</div><div>7240</div><div>7246</div><div>7252</div><div>7258</div><div>7264</div><div>7270</div><div>7276</div><div>7282</div><div>7288</div><div>7294</div><div>7300</div><div>7306</div><div>7312</div><div>7318</div><div>7324</div><div>7330</div><div>7336</div><div>7342</div><div>7348</div><div>7354</div><div>7360</div><div>7366</div><div>7372</div><div>7378</div><div>7384</div><div>7390</div><div>7396</div><div>7402</div><div>7408</div><div>7414</div><div>7420</div><div>7426</div><div>7432</div><div>7438</div><div>7444</div><div>7450</div><div>7456</div><div>7462</div><div>7468</div><div>7474</div><div>7480</div><div>7486</div><div>7492</div><div>7498</div><div>7504</div><div>7510</div><div>7516</div><div>7522</div><div>7528</div><div>7534</div><div>7540</div><div>7546</div><div>7552</div><div>7558</div><div>7564</div><div>7570</div><div>7576</div><div>7582</div><div>7588</div><div>7594</div><div>7600</div><div>7606</div><div>7612</div><div>7618</div><div>7624</div><div>7630</div><div>7636</div><div>7642</div><div>7648</div><div>7654</div><div>7660</div><div>7666</div><div>7672</div><div>7678</div><div>7684</div><div>7690</div><div>7696</div><div>7702</div><div>7708</div><div>7714</div><div>7720</div><div>7726</div><div>7732</div><div>7738</div><div>7744</div><div>7750</div><div>7756</div><div>7762</div><div>7768</div><div>7774</div><div>7780</div><div>7786</div><div>7792</div><div>7798</div><div>7804</div><div>7810</div><div>7816</div><div>7822</div><div>7828</div><div>7834</div><div>7840</div><div>7846</div><div>7852</div><div>7858</div><div>7864</div><div>7870</div><div>7876</div><div>7882</div><div>7888</div><div>7894</div><div>7900</div><div>7906</div><div>7912</div><div>7918</div><div>7924</div><div>7930</div><div>7936</div><div>7942</div><div>7948</div><div>7954</div><div>7960</div><div>7966</div><div>7972</div><div>7978</div><div>7984</div><div>7990</div><div>7996</div><div>8000</div><div>8006</div><div>8012</div><div>8018</div><div>8024</div><div>8030</div><div>8036</div><div>8042</div><div>8048</div><div>8054</div><div>8060</div><div>8066</div><div>8072</div><div>8078</div><div>8084</div><div>8090</div><div>8096</div><div>8102</div><div>8108</div><div>8114</div><div>8120</div><div>8126</div><div>8132</div><div>8138</div><div>8144</div><div>8150</div><div>8156</div><div>8162</div><div>8168&lt;/</div></div>
---	---------------------------------	--



Planning Application 4 B

<div><div></div>A1 SHOP</div> <div><div></div>A3 FOOD AND DRINK</div> <div><div></div>B1 OFFICE</div> <div><div></div>C3 DWELLING</div> <div><div></div>NEW BUILD</div>		<div><div></div></div> <div>Roland Cowan Architects</div> <div>99 Westbourne Park Villas London W2 5ED</div> <div>T 0207 229 5599 E info@rca.uk.com</div> <div>F 0207 229 5566 W www.rca.uk.com</div> <div>DO NOT SCALE FROM THIS DRAWING. USE FIGURED DIMENSIONS ONLY. ANY DISCREPANCIES ARE TO BE REPORTED TO RCA IMMEDIATELY. PRIOR TO THE EXECUTION OF THE WORKS ON SITE ALL DIMENSIONS TO BE VERIFIED ON SITE BEFORE ANY WORK IS PUT IN HAND.</div>		Project 1329: 64/66 CHARLOTTE STREET LONDON W1T 4QD	
		Drawing Title		PROPOSED SECTION H	
		Dwg No.		1329-PA- 4B-030	Revision
		Scale	1:100 @ A3	Date	MAY 2017
				Drawn by	P



Planning Application 4 B

A1 SHOP

A3 FOOD AND DRINK

B1 OFFICE

C3 DWELLING

NEW BUILD

1

2

3

4

5

SCALE BAR

REFERENCE: SCALE IN METRES, 10 CM TOTAL LENGTH AT 1:1 SCALE

ALL TBC WITH PLANNING AUTHORITY AND BUILDING CONTROL

Roland Cowan Architects

99 Westbourne Park Villas London W2 5ED

T 0207 229 5599 E info@rca.uk.com

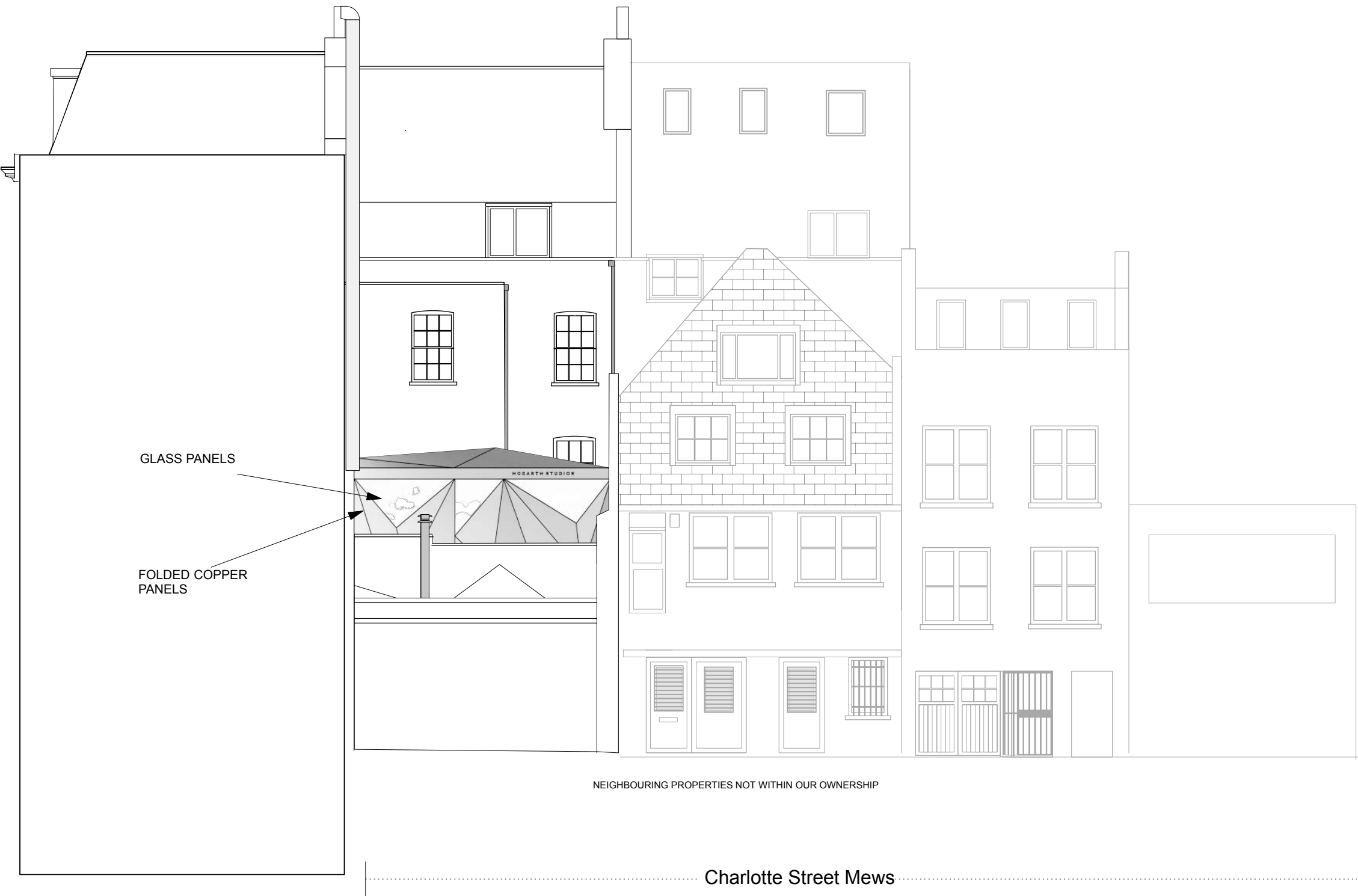
F 0207 229 5566 W www.rca.uk.com

DO NOT SCALE FROM THIS DRAWING. USE FIGURED DIMENSIONS ONLY. ANY DISCREPANCIES ARE TO BE REPORTED TO RCA IMMEDIATELY. PRIOR TO THE EXECUTION OF THE WORKS ON SITE ALL DIMENSIONS TO BE VERIFIED ON SITE BEFORE ANY WORK IS PUT IN HAND.

Project1329: 64/66 CHARLOTTE STREET LONDON W1T 4QD	
Drawing TitleEXISTING ELEVATION C	
Dwg No.1329-PA- 4B-031	Revision
Scale1:100 @ A3	DateMAY 2017
	Drawn byP

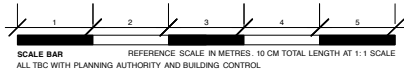


ALTERNATE ETCHING REFERENCING



Planning Application 4 B

 NEW BUILD



Roland Cowan Architects  
99 Westbourne Park Villas London W2 5ED  
T 0207 229 5599 E info@rca.uk.com  
F 0207 229 5566 W www.rca.uk.com

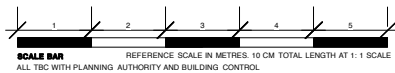
Project 1329: 64/66 CHARLOTTE STREET LONDON W1T 4QD		
Drawing Title <b>PROPOSED ELEVATION C</b>		
Dwg No. 1329-PA- 4B-034	Revision	
Scale 1:100 @ A3	Date MAY 2017	Drawn by P

DO NOT SCALE FROM THIS DRAWING. USE FIGURED DIMENSIONS ONLY. ANY DISCREPANCIES ARE TO BE REPORTED TO RCA IMMEDIATELY. PRIOR TO THE EXECUTION OF THE WORKS ON SITE ALL DIMENSIONS TO BE VERIFIED ON SITE BEFORE ANY WORK IS PUT IN HAND.





Planning Application 4 B



Roland Cowan Architects

99 Westbourne Park Villas London W2 5ED

T 0207 229 5599 E info@rca.uk.com

F 0207 229 5566 W www.rca.uk.com

DO NOT SCALE FROM THIS DRAWING. USE FIGURED DIMENSIONS ONLY. ANY DISCREPANCIES ARE TO BE REPORTED TO RCA IMMEDIATELY. PRIOR TO THE EXECUTION OF THE WORKS ON SITE ALL DIMENSIONS TO BE VERIFIED ON SITE BEFORE ANY WORK IS PUT IN HAND.

Project 1329: 64/66 CHARLOTTE STREET LONDON W1T 4QD

Drawing Title  
**REAR SITE PICTURES**

Dwg No. 1329-PA- 4B-037

Revision

Scale 1:100 @ A3

Date MAY 2017

Drawn by P