

LEGEND	
○	CONVENTIONAL SPINKLER HEADS
⊙	FALSE CEILING SPINKLER HEADS
●	RISE/DROP
→	DIRECTION OF DRAINAGE SLOPE
+	PIPE COUPLING/VICTAULIC

NOTES:

1. ALL PIPEWORK TO BE PAINTED WITH ONE COAT AFTER FABRICATION AND TOUCHED-UP AFTER INSTALLATION. COLOUR TO BE CONFIRMED.
2. ALL PIPEWORK TO BE AIR PRESSURE TESTED TO DETERMINE NO OPEN ENDS AND THEN HYDRAULICALLY TESTED TO 15 BAR FOR A PERIOD OF NOT LESS THAN 2 HOURS.
3. ALL HOLES THROUGH WALLS AND FLOOR SLAB TO BE SLEEVED AND SEALED.
4. ALL SPRINKLERS, PIPE JOINTS, HANGING MATERIALS ETC. TO BE LPC APPROVED.
5. ALL SPRINKLER PROTECTION SHALL CONFORM TO LPC REGULATIONS.
6. ALL PIPEWORK SIZES ON THIS DRAWING ARE INDICATIVE AND SHOULD BE CONFIRMED WITH FULL HYDRAULIC CALCULATIONS.
7. THE CONTRACTOR SHALL CARRY OUT A SITE SURVEY TO ESTABLISH THE REQUIRED LOCATIONS OF PIPE SUPPORTS, THE BRACKETS FOR WHICH SHALL BE INSTALLED.
8. SPRINKLER LAYOUT IS FOR INDICATIVE CO-ORDINATION PURPOSES, CONTRACTOR TO PROVIDE COMPLETE LPC APPROVED LAYOUTS AND OBTAIN ALL NECESSARY APPROVALS
9. THE CONTRACTOR SHALL ALLOW FOR CO-ORDINATION WITH ALL OTHER TRADES, IN PARTICULAR DUCTWORK AND ELECTRICAL CONTRACTORS.
10. THE TENANT INSTALLATION SHALL COMPLY WITH BS5306: PART 2 TOGETHER WITH ALL RELEVANT TECHNICAL BULLETINS OF THE LOSS PREVENTION COUNCIL (LPC).

Drawing/reference:  
FINKERNAGEL ROSS  
DRAWING No. VAP-LON4-100 REV P14

Architect/Client:

**VAPIANO®**

Project:  
VAPIANO CENTRE POINT  
(LONDON 4)

CAD Directory:

Drawing Size: A1

Scale: 1:50 @ A1

**BAILEYGOMM**

39 high street, ware, hertfordshire SG12 9BA  
t: +44 (0)1920 468951 f: +44 (0)1920 462135  
e: mail@baileygomm.co.uk  
shotton lane, windmill industrial estate, cramlington, NE23 3JU  
t: +44 (0)1670 593048 f: +44 (0)1670 593164  
e: northoffice@baileygomm.co.uk

Drawing Title:  
MECHANICAL SERVICES  
GROUND FLOOR  
SPRINKLER PROTECTION

Dwg No:  
8402 S101

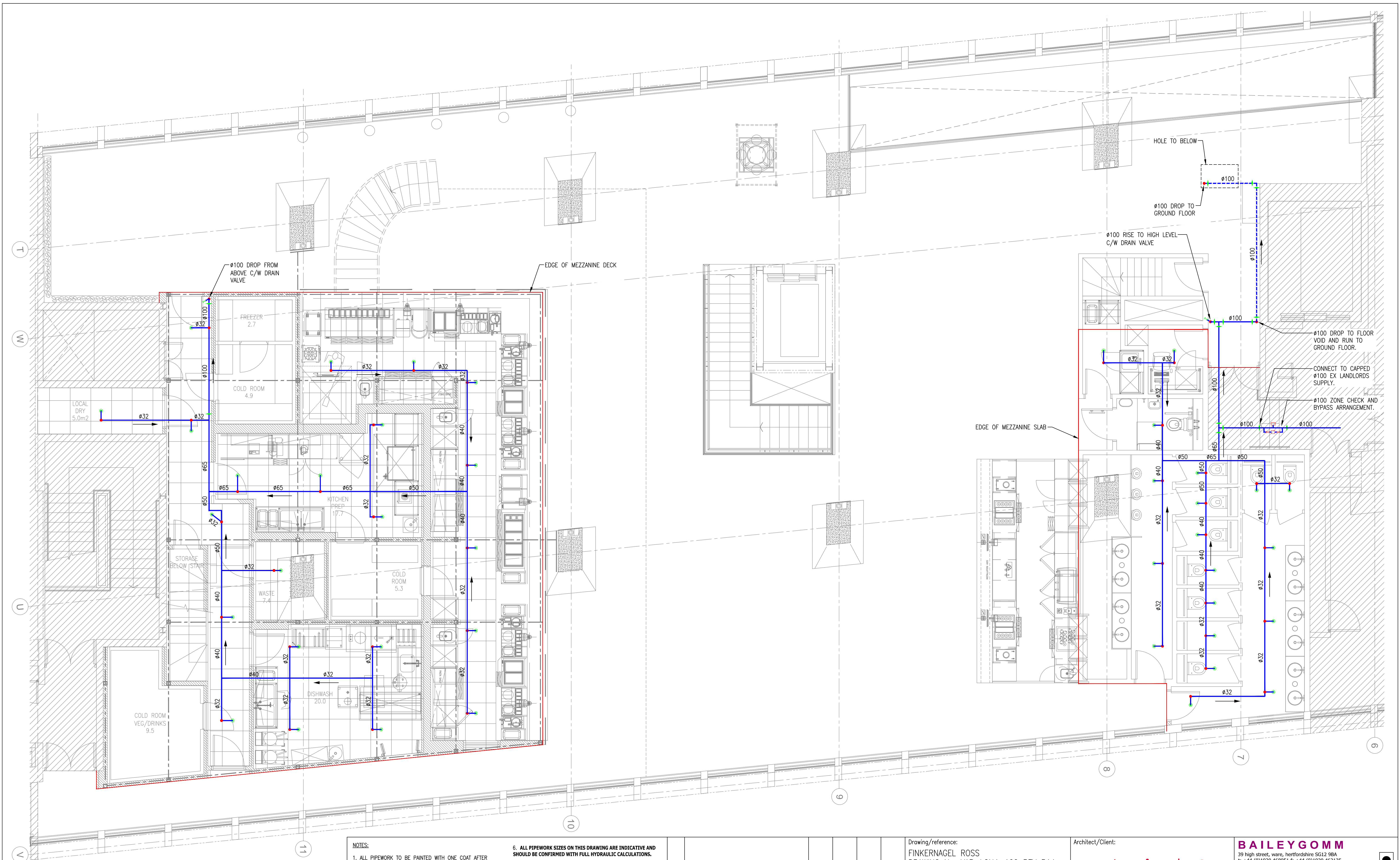
Rev:  
P2

©COPYRIGHT: ALL RIGHTS RESERVED. THIS DRAWING MUST NOT BE REPRODUCED WITHOUT PERMISSION.

DO NOT SCALE. THE CONTRACTOR IS RESPONSIBLE FOR CHECKING DIMENSIONS WHICH ARE IN MILLIMETRES UNLESS OTHERWISE STATED.

P2	RE-ISSUED WITH LOOSE FURNITURE REMOVED	SM	SM	RT	27.06.17
P1	FOR APPROVAL	SM	SM	RT	23.06.17
P	PRELIMINARY ISSUE	SM	SM	RT	02.06.17
Rev.	Description	Design	Drawn	Checked	Date





©COPYRIGHT: ALL RIGHTS RESERVED. THIS DRAWING MUST NOT BE REPRODUCED WITHOUT PERMISSION.

DO NOT SCALE. THE CONTRACTOR IS RESPONSIBLE FOR CHECKING DIMENSIONS WHICH ARE IN MILLIMETRES UNLESS OTHERWISE STATED.

LEGEND	
○	CONVENTIONAL SPRINKLER HEADS
●	FALSE CEILING SPRINKLER HEADS
●	RISE/DROP
→	DIRECTION OF DRAINAGE SLOPE
+	PIPE COUPLING/VICTAULIC

NOTES:

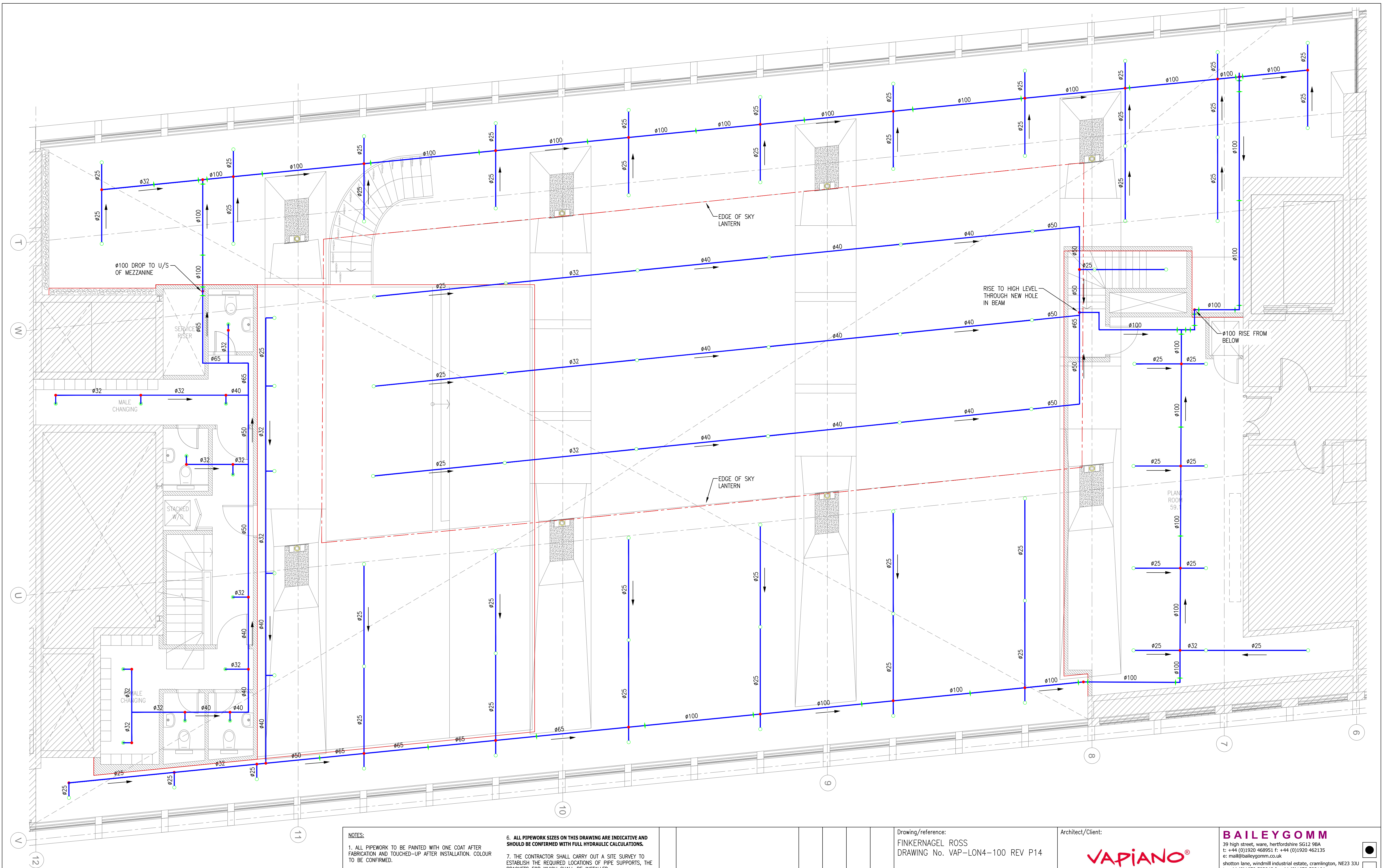
1. ALL PIPEWORK TO BE PAINTED WITH ONE COAT AFTER FABRICATION AND TOUCHED-UP AFTER INSTALLATION. COLOUR TO BE CONFIRMED.
2. ALL PIPEWORK TO BE AIR PRESSURE TESTED TO DETERMINE NO OPEN ENDS AND THEN HYDRAULICALLY TESTED TO 15 BAR FOR A PERIOD OF NOT LESS THAN 2 HOURS.
3. ALL HOLES THROUGH WALLS AND FLOOR SLAB TO BE SLEEVED AND SEALED.
4. ALL SPRINKLERS, PIPE JOINTS, HANGING MATERIALS ETC. TO BE LPC APPROVED.
5. ALL SPRINKLER PROTECTION SHALL CONFORM TO LPC REGULATIONS.
6. ALL PIPEWORK SIZES ON THIS DRAWING ARE INDICATIVE AND SHOULD BE CONFIRMED WITH FULL HYDRAULIC CALCULATIONS.
7. THE CONTRACTOR SHALL CARRY OUT A SITE SURVEY TO ESTABLISH THE REQUIRED LOCATIONS OF PIPE SUPPORTS, THE BRACKETS FOR WHICH SHALL BE INSTALLED.
8. SPRINKLER LAYOUT IS FOR INDICATIVE CO-ORDINATION PURPOSES, CONTRACTOR TO PROVIDE COMPLETE LPC APPROVED LAYOUTS AND OBTAIN ALL NECESSARY APPROVALS
9. THE CONTRACTOR SHALL ALLOW FOR CO-ORDINATION WITH ALL OTHER TRADES, IN PARTICULAR DUCTWORK AND ELECTRICAL CONTRACTORS.
10. THE TENANT INSTALLATION SHALL COMPLY WITH BS5306: PART 2 TOGETHER WITH ALL RELEVANT TECHNICAL BULLETINS OF THE LOSS PREVENTION COUNCIL (LPC).

P2	RE-ISSUED WITH LOOSE FURNITURE REMOVED	SM	SM	RT	27.06.17
P1	FOR APPROVAL	SM	SM	RT	23.06.17
P	PRELIMINARY ISSUE	SM	SM	RT	02.06.17
Rev.	Description	Design	Drawn	Checked	Date

Drawing/reference:  
FINKERNAGEL ROSS  
DRAWING No. VAP-LON4-100 REV P14

Architect/Client:  <b>VAPIANO®</b>		<b>BAILEYGOMM</b> 39 high street, ware, hertfordshire SG12 9BA t: +44 (0)1920 468951 f: +44 (0)1920 462135 e: mail@baileygomm.co.uk shotton lane, windmill industrial estate, cramlington, NE23 3JU t: +44 (0)1670 593048 f: +44 (0)1670 593164 e: northoffice@baileygomm.co.uk	
Project: VAPIANO CENTRE POINT (LONDON 4)		Drawing Title: MECHANICAL SERVICES FIRST FLOOR LOW LEVEL SPRINKLER PROTECTION	
CAD Directory:		Dwg No: 8402 S102	
Drawing Size: A1		Scale: 1:50 @ A1	
		Rev: P2	





©COPYRIGHT: ALL RIGHTS RESERVED. THIS DRAWING MUST NOT BE REPRODUCED WITHOUT PERMISSION.

DO NOT SCALE. THE CONTRACTOR IS RESPONSIBLE FOR CHECKING DIMENSIONS WHICH ARE IN MILLIMETRES UNLESS OTHERWISE STATED.

**LEGEND**

○	CONVENTIONAL SPINKLER HEADS
⊙	FALSE CEILING SPINKLER HEADS
●	RISE/DROP
→	DIRECTION OF DRAINAGE SLOPE
↑	PIPE COUPLING/VICTAULIC

- NOTES:**
1. ALL PIPEWORK TO BE PAINTED WITH ONE COAT AFTER FABRICATION AND TOUCHED-UP AFTER INSTALLATION. COLOUR TO BE CONFIRMED.
  2. ALL PIPEWORK TO BE AIR PRESSURE TESTED TO DETERMINE NO OPEN ENDS AND THEN HYDRAULICALLY TESTED TO 15 BAR FOR A PERIOD OF NOT LESS THAN 2 HOURS.
  3. ALL HOLES THROUGH WALLS AND FLOOR SLAB TO BE SLEEVED AND SEALED.
  4. ALL SPRINKLERS, PIPE JOINTS, HANGING MATERIALS ETC. TO BE LPC APPROVED.
  5. ALL SPRINKLER PROTECTION SHALL CONFORM TO LPC REGULATIONS.
  6. ALL PIPEWORK SIZES ON THIS DRAWING ARE INDICATIVE AND SHOULD BE CONFIRMED WITH FULL HYDRAULIC CALCULATIONS.
  7. THE CONTRACTOR SHALL CARRY OUT A SITE SURVEY TO ESTABLISH THE REQUIRED LOCATIONS OF PIPE SUPPORTS, THE BRACKETS FOR WHICH SHALL BE INSTALLED.
  8. SPRINKLER LAYOUT IS FOR INDICATIVE CO-ORDINATION PURPOSES, CONTRACTOR TO PROVIDE COMPLETE LPC APPROVED LAYOUTS AND OBTAIN ALL NECESSARY APPROVALS
  9. THE CONTRACTOR SHALL ALLOW FOR CO-ORDINATION WITH ALL OTHER TRADES, IN PARTICULAR DUCTWORK AND ELECTRICAL CONTRACTORS.
  10. THE TENANT INSTALLATION SHALL COMPLY WITH BS5306: PART 2 TOGETHER WITH ALL RELEVANT TECHNICAL BULLETINS OF THE LOSS PREVENTION COUNCIL (LPC).

P2	RE-ISSUED WITH LOOSE FURNITURE REMOVED	SM	SM	RT	27.06.17
P1	FOR APPROVAL	SM	SM	RT	23.06.17
P	PRELIMINARY ISSUE	SM	SM	RT	02.06.17
Rev.	Description	Design	Drawn	Checked	Date

Drawing/reference:  
FINKERNAGEL ROSS  
DRAWING No. VAP-LON4-100 REV P14

Architect/Client:  
**VAPIANO®**  
Project:  
VAPIANO CENTRE POINT  
(LONDON 4)  
CAD Directory:  
Drawing Size: A1

**BAILEYGOMM**  
39 high street, ware, hertfordshire SG12 9BA  
t: +44 (0)1920 468951 f: +44 (0)1920 462135  
e: mail@baileygomm.co.uk  
shotton lane, windmill industrial estate, cramlington, NE23 3JU  
t: +44 (0)1670 593048 f: +44 (0)1670 593164  
e: northoffice@baileygomm.co.uk  
Drawing Title:  
MECHANICAL SERVICES  
FIRST FLOOR HIGH LEVEL MEZZ  
SPRINKLER PROTECTION  
Dwg No:  
8402 S103  
Rev:  
P2