

Existing Ground Floor Plan
Scale 1:100 @ A3

PROGRESS

General Notes:
THIS DRAWING HAS BEEN PREPARED BY DS DESIGN SOLUTIONS AND THE DATA CONTAINED HEREIN MAY BE USED OR REPRODUCED ONLY WITH DS DESIGN SOLUTIONS' APPROVAL.

Rev.	Description	Date	Signed	Checked

Date	Signed	Checked

Scale	Date	Drawn by	Checked by
1:100 @ A3	16.10.2015	AL	DS

Drawing Title
Existing Ground Floor Plan

Project
Ornan Court, 2 Ornan Road
Hampstead, London NW3 4PT

DS
design solutions
www.DesignSolutionsUK.com

561 Finchley Road
London NW3 7BJ
Phone 020 7433 3939
Fax 020 7794 4279

Project no. 15/0159	Drawing no. 001	Revision 04
------------------------	--------------------	----------------



Existing Front Elevation
Scale 1:100 @ A3

5no. Existing Toast Rack Bicycle Storage Spaces to be replaced.

Horse Chestnut Tree to be removed;
Approved Planning Application Ref: 2017/2882/T

Haverstock Hill

Issued For **PROGRESS**

General Notes:
THIS DRAWING HAS BEEN PREPARED BY DS DESIGN SOLUTIONS AND THE DATA CONTAINED HEREIN MAY BE USED OR REPRODUCED ONLY WITH DS DESIGN SOLUTIONS' APPROVAL.

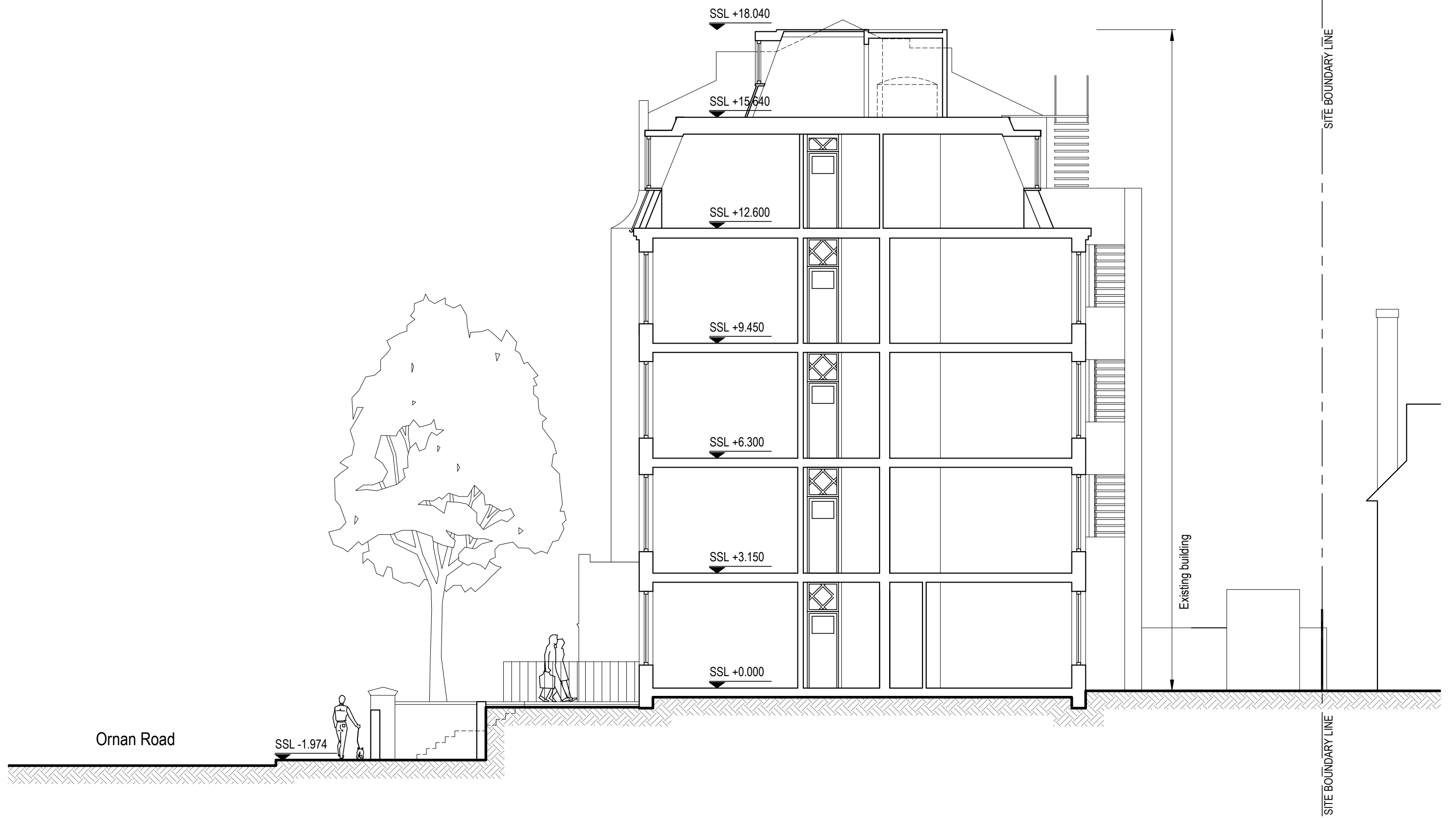
Rev.	Description	Date	Signed	Checked

Date	Signed	Checked

Scale	Date	Drawn by	Checked by
1:100 @ A3	16.10.2015	AL	DS

Project
Ornan Court, 2 Ornan Road Hampstead, London NW3 4PT

 design solutions www.DesignSolutionsUK.com	561 Finchley Road London NW3 7BJ Phone 020 7433 3939 Fax 020 7794 4279	
	Project no. 15/0159	Drawing no. 010



Existing Section AA
Scale 1:100 @ A3

Issued For **PROGRESS**

General Notes:
THIS DRAWING HAS BEEN PREPARED BY DS DESIGN SOLUTIONS AND THE DATA CONTAINED HEREIN MAY BE USED OR REPRODUCED ONLY WITH DS DESIGN SOLUTIONS' APPROVAL.

Rev.	Description	Date	Signed	Checked

--

--

Scale 1:100 @ A3	Date 16.10.2015	Drawn by AL	Checked by DS
Drawing Title Existing Section A-A			
Project Ornan Court, 2 Ornan Road Hampstead, London NW3 4PT			

 <p>561 Finchley Road London NW3 7BJ Phone 020 7433 3939 Fax 020 7794 4279 www.DesignSolutionsUK.com</p>	Project no. 15/0159	Drawing no. 020	Revision 00
---	------------------------	--------------------	----------------