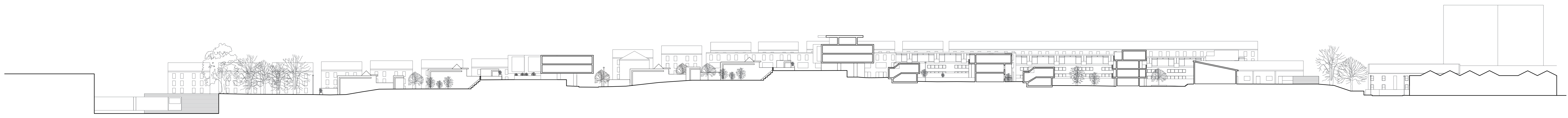


PROPOSED SITE SECTION D-D



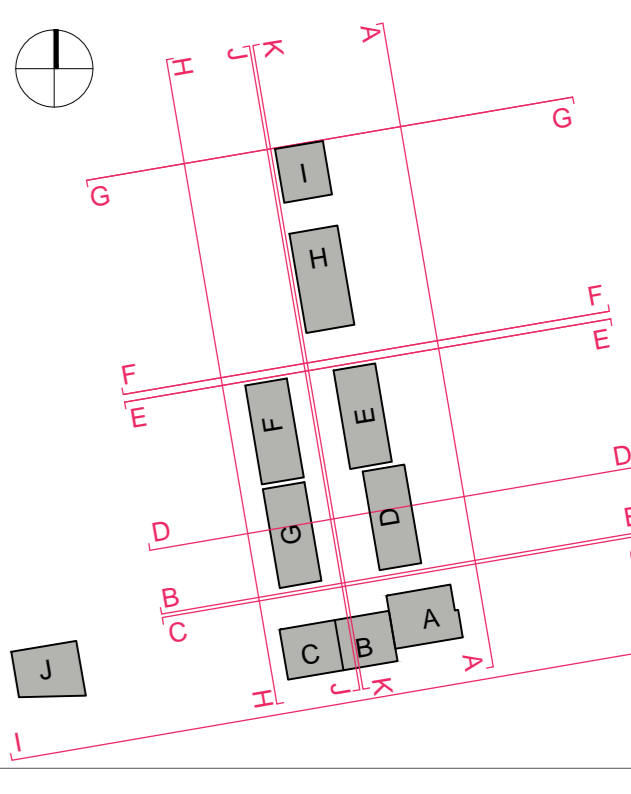
EXISTING SITE SECTION D-D

**notes**

- The contractor is responsible for checking dimensions, tolerances and references. Any discrepancy to be verified with the Architect before proceeding with the works.
- Where an item is covered by drawings to different scales the larger scale drawing is to be worked to.
- Do not scale drawing. Figured dimensions to be worked to in all cases.

**CDM Regulations 2007**

All current drawings and specifications for the project must be read in conjunction with the Designer's Hazard and Environmental Assessment Record.



date	rev	revision/author/checker
18 03 12	A	Based F.C. Elements added to approval set
14 07 2012	B	Updated to E13 submission

**purpose of issue**  
**Planning**

**project**  
**Maiden Lane Masterplan**

**drawing**  
**Existing and Proposed Site Section D-D**

<b>drawing no</b> AA1692-2-1-1013	<b>rev</b> B
<b>drawn</b> RFB	<b>checked</b> CC
<b>scale @ A0</b> 1:500	<b>date</b> 3 OCT 2012

PRP Architects ©  
 10 Ludlow Street  
 Salford  
 Greater Manchester M6 6PU  
 T +44 (0)161 763 1200  
 F +44 (0)161 763 1201  
 www.prparchitects.co.uk

