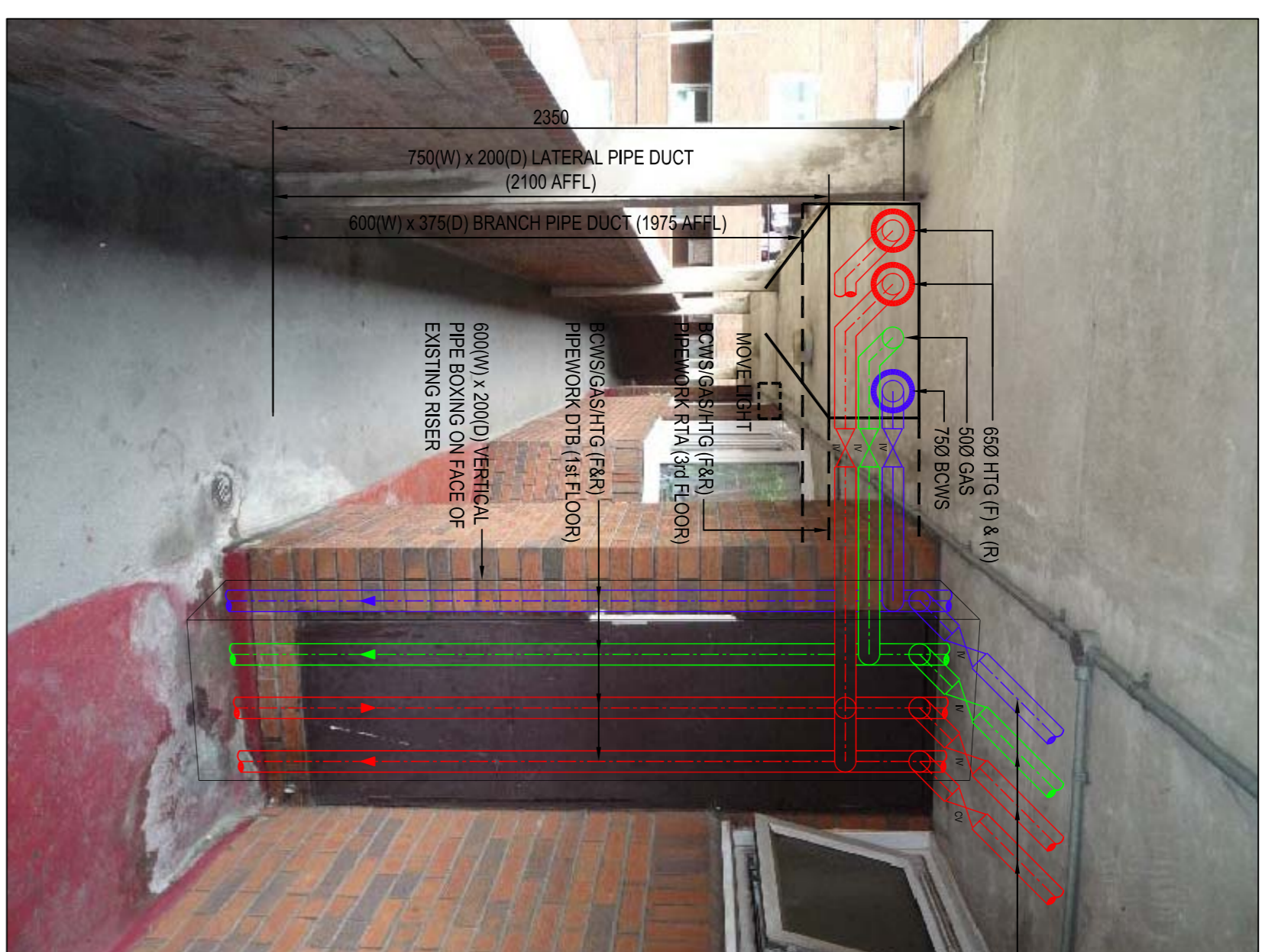


ALTERNATIVE DETAIL FOR REPLACEMENT HTG GAS & BOWS PIPES AVOIDING TRENCHING IN ENTRANCE AREA



ALTERNATIVE DETAIL FOR REPLACEMENT HTG GAS & BOWS PIPES AVOIDING TRENCHING IN ENTRANCE AREA



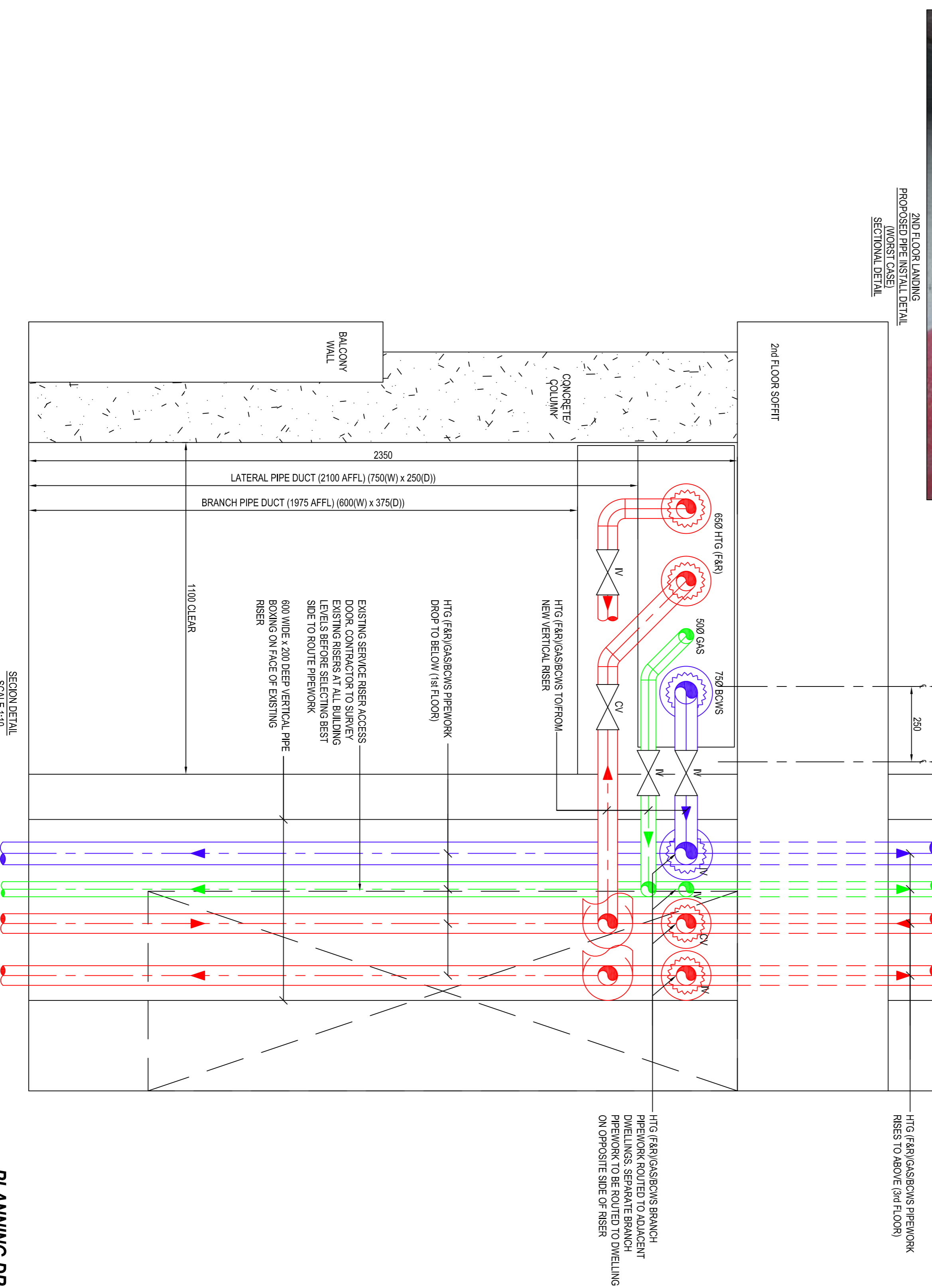
PROPOSED PIPE INSTALL DETAIL (WORST CASE) SECTIONAL DETAIL



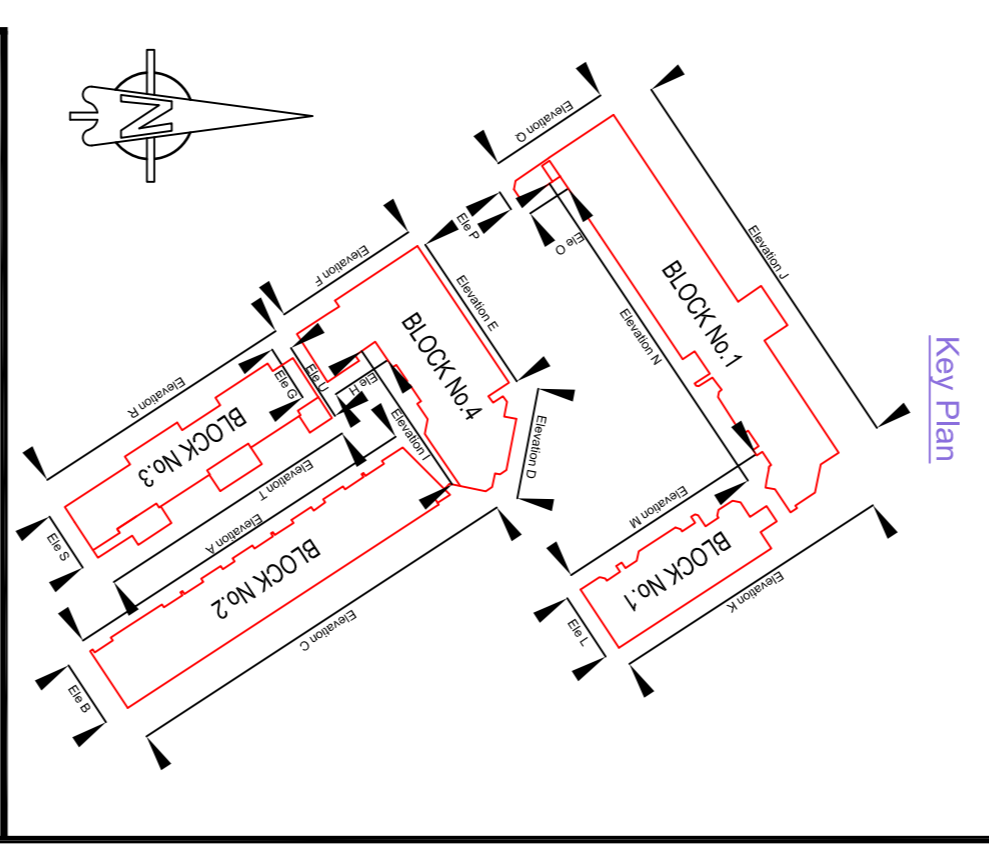
HTG (F&R)/GAS/BOWS BRANCH PIPERWORK ROUTED TO ADJACENT DWELLING. SEPARATE BRANCH PIPERWORK TO BE ROUTED TO DWELLING ON OPPOSITE SIDE OF RISER



EXISTING DHN PIPERWORK BELOW PODIUM DECK



PLANNING DRAWING



Client
ARGYLE STREET
LONDON
WC1H 8NJ
BYA BUTLER & YOUNG ASSOCIATES

Mechanical and Electrical Consulting Engineers
1st Floor, 54-52 Station Road East, Oxford, Surrey, GU9 0PG
Telephone 01883 717172 Fax 01883 717174
Website www.byac.co.uk Email eng@byac.co.uk

Project
**MONICA SHAW COURT
HEATING, GAS AND DOMESTIC WATER
SERVICES REFURBISHMENT**

Drawing Title
**PLANNING DRAWING
TYPICAL PIPE CONCEALMENT DETAILS (VARIOUS)**

Scales AS SHOWN	Xref A1	Dwg Sheet A1
Drawn NS	Checked FE	Date JULY 17
BYA Ref: 2395	Drawing Number: 2395-BYAM-001	REV: A