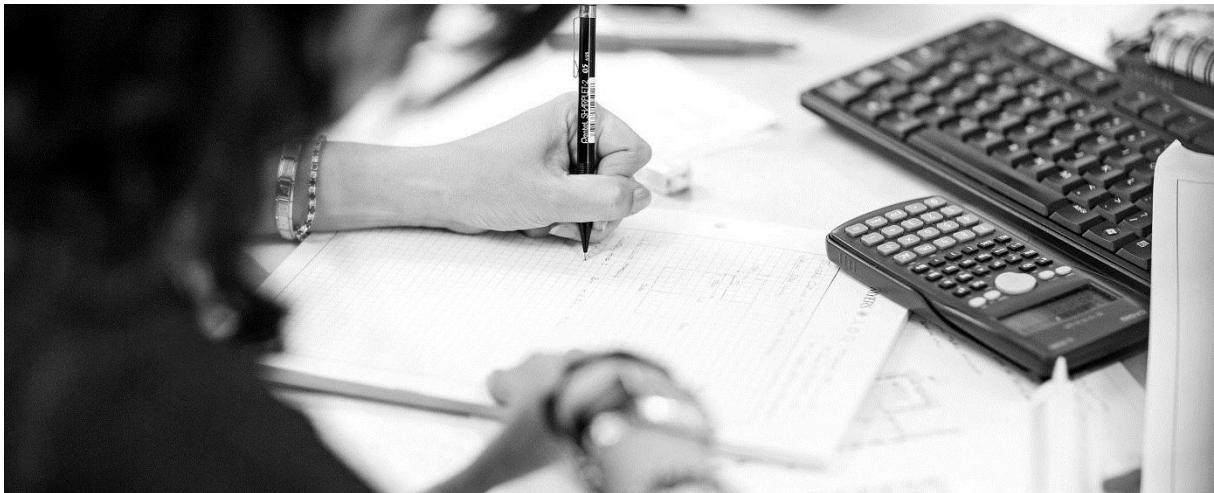


32 Ferncroft Avenue, London NW3

Structural Engineering Consultancy Services

July 2017





Price & Myers is a consulting civil and structural engineering practice established in London in 1978, with the aim of working with good imaginative architects, to make excellent buildings. In our first 39 years we have completed over 26,000 jobs, and won over 650 awards. We have offices in London, Nottingham, and Oxford, and currently employ about 185 people.

Our work covers an unusually wide range, both in size and type. Projects vary from minor alterations and extensions, to major new buildings and refurbishment projects, using the most recent developments in materials and construction techniques. We have advised on the repair and restoration of many historic buildings, and we have worked with some of the country's leading architects on the design of many outstanding modern buildings. Our diverse project portfolio allows us to find the right solution for every job.

We enjoy the technical, logical, engineering principles that underpin our profession; applying them creatively to help architects and clients bridge the gap between concept and reality, and meet our clients' individual needs.

All the Partners are actively involved in the design of our projects, and the office is characterised by an open, informal atmosphere in which discussions of job problems and successes are encouraged. Our experience of working in multi-disciplinary teams enables us to make a positive contribution at an early stage in the design of a project, when engineering input can often help to achieve an elegant and cost effective solution.

Price & Myers are consulting engineers; we have specialist teams supporting key aspects of building design.

STRUCTURES

The majority of our work at Price & Myers is the design of building structures. Our aim is to create simple and elegant structural engineering, minimising the complexities that can compromise aesthetics and function, slow construction, and escalate costs. Our job is to deliver good, clear drawings and concise and readable documents.

GEOMETRICS

Price & Myers Geometrics applies elements of form, structure, materials and manufacture to interpret unusual ideas and make them a reality. These projects often seem complex, but are built on tried and tested principles of geometry and engineering. We are involved from the initial modelling to the final fabrication.

SUSTAINABILITY

Working from the conceptual stage to BREEAM certification Price & Myers Sustainability offers technical support to clients & designers to improve the environmental performance of their buildings. Combining rigorous analysis with an imaginative approach enables us to find often unique but appropriate solutions.

INFRASTRUCTURE

Price & Myers Infrastructure provide a wide range of services to our clients: from civil and drainage engineering, to advising on the suitability of sites for development, and identifying restrictions that could adversely affect development proposals. Our clients range from private home owners to major developers and Local Authorities.



David Derby BSc ACGI CEng FStructE MICE

After graduating from Imperial College, London in 1980, David joined contractor George Wimpey plc to work in an oil rig fabrication yard at Nigg Bay, Scotland, and Alexandria dry dock, Egypt, before moving to their design office in London. He joined Price & Myers in 1986, becoming a Partner in 1998, and is responsible for legal and financial management.

Philip Hudson BSc CEng MIStructE MICE

Phil graduated from UMIIST in 1981. He spent five years with Knight & Piésold, working on hydroelectric and thermal power station projects in Africa, and two-years with CEGB on the UK-France power link. After a spell with Eastwood & Partners, Phil joined Price & Myers in 1988, and became a Partner in 2001. He is responsible for our IT and information management systems.

Ian Flewitt MEng MSc CEng MIStructE

Ian graduated from Leeds University in 1991, then spent five years with WSP including a secondment to Laing Civil Engineering on the Ashford International Station Project. He worked for two years in Australia, returned to WSP in 1999, joining Price & Myers in 2000. He became a Partner in 2004 and is responsible for our Sustainability team.

Paul Toplis MA CEng FStructE

After graduating from Downing College, Cambridge in 1981, Paul joined Ove Arup and Partners where his work included a high-rise building in Cairo, the Fenchurch Street Station Redevelopment, and a series of design studies with Renzo Pianos' Building Workshop. He joined Price & Myers in 1986, becoming a Partner in 2004. He has responsibility for our Health & Safety and Quality Management systems.

John Helyer BSc CEng MIStructE FICE

John graduated from The City University in 1989, then joined Scott-White and Hookins and worked on a variety of projects including a two-year period on site at Waterloo International Station. He joined Price & Myers in 1994 and became a Partner in 2005.

Andy Toohey BEng CEng MIStructE

Andy graduated from Southampton University in 1992, and worked for Alan Baxter & Associates for four years before joining Price & Myers in 1996. He spent a year with Ove Arup & Partners in New York, working on the Kingdom Centre in Saudi Arabia and the Lamont-Doherty Earth Observatory, New York with Rafael Vinoly, before returning to Price & Myers in 1998, becoming a Partner in 2006.

Paul Batty BSc CEng MICE MIStructE

Paul graduated from The University of Leeds in 1979, and joined Cementation International where his work included two years in Oman on the Sultan Qaboos University and 6 months on the Hyatt Hotel in Grand Cayman. He spent 6 years with YRM Anthony Hunt Associates before joining Price & Myers in 1993, becoming a Partner in 2006.

Steve Machin BSc CEng MIStructE

Steve graduated from the University of Lancaster in 1983. He worked for William Saunders and Partners and John Burrow and Partners then joined Price & Myers in Nottingham between 1989 and 1992, returning in 1995. He became a Partner in 2006.

Tim Lucas MEng CEng FStructE

Tim joined Price & Myers after graduating from Leeds University in 1996. He spent a year with Ove Arup & Partners in 2000, working on projects with Foster & Partners, Richard Rogers Partnership and Future Systems. He rejoined Price & Myers in 2001 to form the Geometrics team, specialising in structurally and geometrically advanced engineering projects and became a Partner in 2007.

David Lockett MEng CEng MIStructE

David graduated from Warwick University in 1999. He joined the Price & Myers Nottingham office the same year having already completed three summer placements with us. He became a Partner in 2012.

Peter Dash BEng CEng MIStructE

After graduating in 1994 from The University of Newcastle, Australia, Peter worked for Taylor Thomson Whitting in Sydney, Australia before moving to Hong Kong in 1999 where he worked for CM Wong & Associates on numerous residential and commercial towers. Peter joined Price & Myers in 2003 and became a Partner in 2012.



2017

Stirling Prize Shortlist

Command of the Oceans, Kent
 Photography Studio for Juergen Teller, London

RIBA Award

Caring Wood, Kent
 Leicester Cathedral's Richard III Project
 Liverpool Philharmonic Hall, Merseyside
 Warwick Hall Community Centre, Burford
 Command of the Oceans, Kent
 Vajrasana Buddhist Retreat Centre, Suffolk
 Stoller Hall, Chetham's School of Music, Manchester
 Photography Studio for Juergen Teller, London

RIBA East Award

Vajrasana Buddhist Retreat Centre, Suffolk
 Cowan Court, Churchill College, Cambridge

RIBA East Building of the Year Award

Vajrasana Buddhist Retreat Centre, Suffolk

RIBA East Midlands Award

Leicester Cathedral's Richard III Project

RIBA East Midlands Building of the Year Award

Leicester Cathedral's Richard III Project

RIBA East Midlands Project Architect of the Year Award

Leicester Cathedral's Richard III Project

RIBA London Award

5-7 St Helen's Place, The Leathersellers' Hall, London
 Photography Studio for Juergen Teller, London
 West Croydon Bus Station, London

RIBA London Building of the Year Award

Photography Studio for Juergen Teller, London

RIBA London Project Architect of the Year Award

West Croydon Bus Station, London

RIBA North West Award

Stoller Hall, Chetham's School of Music, Manchester
 Liverpool Philharmonic Hall, Liverpool

RIBA South Award

Private House, Oxfordshire
 Warwick Hall Community Centre, Burford

RIBA South Conservation Award

Warwick Hall Community Centre, Burford

RIBA South East Award

Command of the Oceans, Kent
 Caring Wood, Kent

RIBA South East Building of the Year Award

Command of the Oceans, Kent

RIBA South East Conservation Award

Command of the Oceans, Kent

RIBA South East Sustainability Award

Caring Wood, Kent

RIBA West Midlands Award

Alan Walters Building, The University of Birmingham

RIBA Yorkshire Award

York Theatre Royal, York

RIBA Yorkshire Client of the Year Award

York Theatre Royal, York

Civic Trust Award, Commendation

The Portland Collection, Worksop
 8 St James's Square, London

RICS South East Community Benefit Award, Highly Commended

Warwick Hall Community Centre, Burford

Housing Design Award, Special School Mention Award

St Paul's Way Trust School Expansion and Burdett Estate Regeneration, London

London Planning Awards, Best Town Centre Project

The Scene, London

Medway Design and Regeneration Award, Restoration Conservation

Command of the Oceans, Kent

New London Architecture Award, Mayor's Prize, Highly Commended

Central Somers Town Community Facilities, London

Sussex Heritage Trust, Small Scale Residential Award

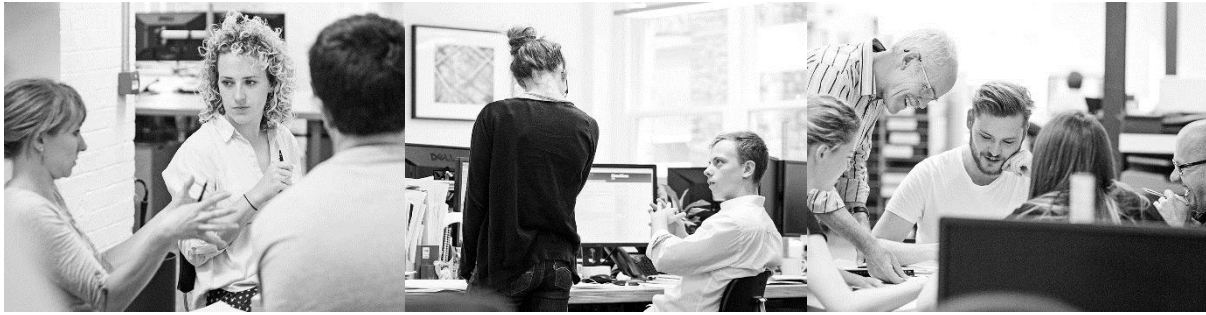
Brook House Studio, Lewes

Civic Voice Design Award, New Building

Warwick Hall Community Centre, Burford

Civic Voice Design Award, Special Conservation Area

Warwick Hall Community Centre, Burford



Practice structure

The practice operates in partner groups, with Partners taking an active role in all projects. The partner groups work in open-plan spaces, and all correspondence and design drawings are circulated within the group and discussed. This results in good communications and teamwork, with cross-fertilisation of ideas and experience. It also results in flexibility to cope with varying workload and holidays. Monthly programming meetings assess workload and plan adjustments to resources needed.

Drawing work is almost entirely on CAD; programmed weekly across the practice.

Presentations of projects by the designing group to the rest of the practice, independent Quality Assurance reviews of projects, and regular discussions of design and practical experience, all bring the expertise of the whole firm to support the design groups.

Staff

11 Partners, 6 Consultants, 26 Associates, 90 Engineers, 7 Sustainability Consultants, 29 CAD Technicians, 19 Administration.

All our Partners, Associates and engineers have engineering degrees, and over half of them are members of one or more of the professional institutions.

Information technology

A well specified IT and communications infrastructure runs throughout our offices. Our information system is robust and provides flexibility for future expansion and development.

We have developed our own project and information management system, and use the "Newforma" email management system, with the aim of making the office as paper-free as possible.

Accreditations

Our practice management systems achieve compliance with BS EN ISO9001, externally audited by QMS; our environmental management system is compliant with ISO14001, externally audited by QMS; and the Practice is registered as a Pre-qualified Designer by CHAS.

Philip Hudson

BSc(Eng) CEng MStructE MICE



Partner

Education

UMIST, University of Manchester

Special Focus

The use of BIM Technology
Cross-Laminated Timber
construction

Phil became an Associate in 1994 and Partner in 2001.

Member of the British Council of Offices since 2009.

Member of the Worshipful Company of Constructors since 2013.

IStructE number: 020245368
Grade: Member

After graduating from UMIST in 1981, Phil worked for Knight & Piesold Consultants. As a graduate engineer he worked on large hydro electric and thermal power station projects in Kenya, Zimbabwe, Zambia and Swaziland. His time with Knight & Piesold included a two year site secondment to the CEGB on the UK-France power link at the Sellindge Converter Station in Kent.

After a short spell with Eastwood & Partners, Phil joined Price & Myers in 1988. He has worked on a large range of projects since then with recent and current examples including: Chesham House retail and office block behind an existing façade on Regent Street with Squire and Partners for City Offices LLP & The Crown Estate (£23m, 2006); residential scheme at City Road Basin with Pollard Thomas and Edwards for Grove Manor Homes (£15m, 2007); International Children’s Eye Centre at Moorfields Eye Hospital with Penoyre and Prasad (£10.5m, 2007); Retail development at 499-517 Oxford Street with ORMS and for Redevco (£6m, 2007); residential development at Lett Road in Stratford with Procter Matthews Architects for Thornsett Homes and The Carpenters Company (£12m, 2010); new residential development at 30 Oval Road in Camden with Tate & Hindle Architects for London & Newcastle (£15m, 2010); alterations and refurbishment of the Great Room at the Royal Society of Art with Mellersh & Harding and Matthew Lloyd Architects (£1m, 2012); Stirling Prize shortlisted Bishop Edward King Chapel in Oxfordshire with Niall McLaughlin Architects (£2.1m, 2013); modernisation and extension of the Ditchling Museum in Sussex with Adam Richards Architects including the renovation of a listed barn (£3m, 2013); large residential development on Leyton Road with Pollard Thomas Edwards for East Thames Housing (£40m, 2014); the refurbishment and extension of 1-3 Regent Street with JM Architects for The Crown Estate (£10m, 2015); Victoria Square, the design of 152 new Private Rented Sector residential units, with Newground Architects (£23.5m, taken to tender 2015); and Caring Wood House, the design of a large private residence built using Cross-Laminated Timber, with Rural Office for Architecture and MacDonald Wright Architects (2017).

He is currently working on the first and second development sites of the Aylesbury Estate Masterplan in Southwark, led by HTA Design, Maccreeanor Lavington Architects, Hawkins\Brown and five other practices (£350m, on site); 8 Chesterfield Hill, London, the demolition of a 1980s office block and construction of an apartment building with a basement, with Squire and Partners (£10m, on site); Morley House on Regent Street, a large residential development behind a retained façade, with MSMR Architects for The Crown Estate (£40m in design); and Bat & Ball Centre, Kent, a RIBA competition winning design for a new community centre, with Theis & Khan Architects (£2.5m, in design).

Phil became an Associate in 1994 and Partner in 2001.

Sarah Pellereau

MEng CEng MIStructE



Associate

Education

University of Leeds

Other Professional Experience

RIBA/ARB Part 1, 2001

Special Focus

Cross-Laminated Timber construction

Member of the British Council of Offices.

IStructE number: 021074457

Grade: Member

Sarah started working at Price & Myers after graduating in Architectural Engineering from the University of Leeds in 2001. During the summer of 2000 she worked for two months for Laing Ltd on the site of the Basingstoke City Centre redevelopment.

Since joining Price & Myers Sarah's work has included small footbridges; a number of residential alterations and extensions; a new drama studio in Hampshire, and a few Sure Start nurseries around England. She also worked on the extension to the Senior Common Room at St John's College, Oxford with MJP Architects (£2m, RIBA Award 2006).

In 2006 she was seconded on site for six months working on the redevelopment of the St Pancras Station CTRL project. Following her secondment, Sarah worked on a number of office refurbishments up to £6.2m; a number of Health Centres including Akerman Road Health Centre with Henley Halebrown Rorrison (£12m, 2012, RIBA Award 2013); a new library and archive store for Douai Abbey with David Richmond & Partners (£1.5m, 2010, RIBA Award 2012); Middle Row Primary School, a new CLT primary school with a rooftop play area with Penoyre & Prasad (£15.6m, 2014); the addition of a light weight arched timber glue laminated structure to Peckham Mosque to form a new prayer room with Benedict O'Looney; a new ETFE roof at sixth floor to cover the internal courtyard of TUC Congress House (£1.1m, 2015); Torquay House, a 13-storey hostel block with MJP Architects (2015, Civic Trust Award, Commendation 2016); and an extension to the Tate Gallery in St Ives and refurbishment of the original building with Jamie Fobert Architects (£7.5m, on site).

She is currently working on the significant renovation works and the rebuilding of the pool, gym and dining areas at The Hurlingham Club, with Theis & Khan Architects (£12m, in design); a residential development in Mayfair, with Squires + Partners; a Missionary Church, with funding provided by the development of Cross-Laminated Timber constructed apartments in Bethnal Green, with Thornsett Group; Maitland Park, London, a new development of three residential blocks, with Cullinan Studio (£27m, in design); a new entrance lobby to the Savill Building for The Crown Estate; the extension to Holiday Inn Express in Colliers Wood, with Method Architects (due 2017); Bat & Ball Centre, Kent, a RIBA competition winning design for a new community centre, with Theis & Khan Architects (£2.5m, in design); and a number of private residences.

Sarah became an Associate in 2010.

Sophia Tibbo
MEng



Structural Engineer

Education

University of Leeds

Special Focus

Cross-Laminated Timber
construction

IStructE number: 078367591
Grade: Graduate

Sophia graduated from University of Leeds in 2010 with a degree in International Architecture Engineering. During her degree Sophia spent a year studying at Omaha University in Nebraska, USA.

After graduating Sophia joined Sail Loft Timber Frame Design where her work included producing working drawings including plans, sections and cutting lists for timber framed structures.

She joined Price & Myers in 2011 and has since worked on many award winning and interesting projects, including the 2013 Stephen Lawrence Prize winning Montpelier Community Nursery in London, with ay-architects (£400,000, 2012); the award winning modernisation and extension of the Ditchling Museum of Art + Craft in Sussex with Adam Richards Architects including the renovation of a listed barn (£1m, 2013); the refurbishment of St Peters C of E School in London, a Victorian school, with Phil Meadowcroft Architects (2013); an extension to Sacred Heart Primary School in Wandsworth, providing a Cross-Laminated Timber structure for KLH (2013); and The Fishing Hut, the 2015 Stephen Lawrence Prize winning boat store as part of the larger Keeper's Cottage project, with Niall McLaughlin Architects (£250,000, 2014).

Sophia is currently working on Keeper's Cottage, a large new private residence on the riverside in Alresford, with Niall McLaughlin Architects (£7m, due 2017); The Nazrin Shah Building, a new 160-seat lecture hall, seminar rooms and teaching facilities at Worcester College, with Niall McLaughlin Architects (due 2017); the extension to Holiday Inn Express in Swindon, with Nash Partnership Architects (due 2018); significant renovation works and the rebuilding of the pool, gym and dining areas at The Hurlingham Club, with Theis & Khan Architects (£12m, in design); and a basement extension and remodelling of a terraced house in Chelsea, with Rodic Davidson Architects (on site 2017).



Private Residence

Private Residence, London NW3

Extensive remodeling and extension of a large private home on the edge of Hampstead Heath, including a basement swimming pool. The project involved the retention of a small section of the original 1920s facade while construction of two stories of basement proceeded beneath it. Site access and temporary works were complicated by the steeply sloping site and the presence of protected trees along the perimeter of the site. The project also incorporates an elliptical stone cantilever staircase as a feature of the main entrance hall. Completed 2013.

Architect Charlton Brown Partnership



Templewood Avenue

Templewood Avenue, London NW3

A refurbishment of a Grade II listed early 20th Century detached house in Hampstead. The extension to the rear of the garden was cut into the sloping site to form a swimming pool house at the lower level, connecting to the basement of the house over which a family room and conservatory was built. A link to the rest of the house has been made at ground floor level. The concrete shell of the pool house used Calite additive to provide waterproofing. A steel-framed superstructure over the pool house was clad in stone and brickwork, and the pitched roof supported by traditional style oak scissor trusses, creating a visual feature of the functional structure. Completed 2005.

Architect Barrett Lloyd Davis Associates

Value £3.5m



Ingram Avenue

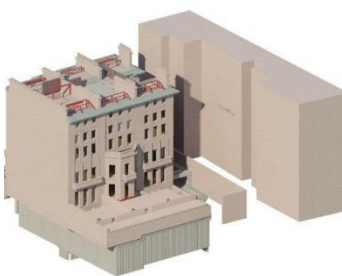
Two Houses, Ingram Avenue, London NW11

Two new build 2,400 sq m houses near Hampstead Heath. The two-storey houses are separate above ground but have a semi-detached two-level basement over the majority of the site with swimming pool and cinema facilities. Completed 2016.

Client G2 Development Management

Architect KSR Architects

Value £11m



13-15 Princes Gate

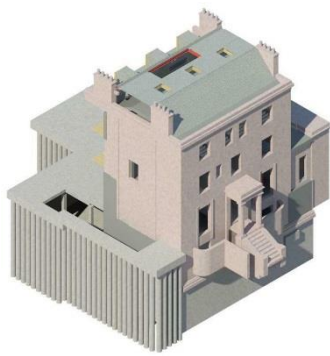
13-15 Princes Gate, London SW7

Princes Gate is a luxury residential project that will create two London townhouses. Number 13 was once home to the banker JP Morgan and US President John F Kennedy when his father Joseph Kennedy was the US Ambassador in the 1930s. Planning consent was granted for two houses of 30,000 sq ft and 11,000 sq ft overlooking Hyde Park. The houses will have roof terraces and private gardens to the rear plus underground parking via a car lift. The houses are listed and we have worked to integrate modern services within the historic fabric. Completed 2016.

Client Viridis Asset Management Ltd

Architect Darling Associates

Value £30m



68 Hamilton Terrace

68 Hamilton Terrace, London NW8

The refurbishment and extension of a private residence. A new second level of basement was added to the house which includes a swimming pool and gymnasium. Completed 2015.

Architect Wolff Architects
Value £5m



Queen's Ride

Queen's Ride, London SW13

Demolition of an existing property close to Barnes Common and the construction of a large detached three-storey property over a deep full footprint basement. The basement extends beyond the front of the building and a car lift allows several vehicles to be garaged beneath the driveway. The basement level swimming pool has a moveable base to allow the depth of the water to be adjusted, or when raised completely the space can be used for functions and parties. In addition, the scheme includes a grand staircase, a pool side bar, a catering kitchen and a roof to terrace. Completed 2014.

Architect Faithfull Architects



Private Residence

Private Residence, London SW1

Conversion of a seven-storey framed, stone clad office building with two levels of basement into a high quality single residential dwelling. The scheme involved construction of two additional levels of basement beneath the existing basements to house, amongst other things, a swimming pool. All existing hollow pot floors were replaced with new concrete decks capable of supporting the heavy marble finished required by the client. In addition, a subterranean car park was constructed adjacent to the building which is accessed via a car lift and linked to the residence via a tunnel. Completed 2014.

Architect SHH Architects



Upper Phillimore Gardens

Upper Phillimore Gardens, London W8

This project involved the demolition of the existing house and the construction of a new four-storey house over 2½ storeys of basement occupying the whole site. Within the basement is a 25m long swimming pool, a catering kitchen, staff accommodation, a cinema, fitness suite and treatment rooms. The garden was re-instated over the basement and the superstructure rebuilt to closely match the original house that was demolished. One of the most challenging aspects of the project was the proximity of the neighbouring buildings. Completed 2011.

Architect Barrett Lloyd Davis Associates



Palace Green

Palace Green, London W8

A large scale refurbishment of a Grade II listed house opposite Kensington Palace. The work includes the construction of a very complicated new basement for a swimming pool and leisure areas as well as car parking, which required complex phasing and temporary works to fit in with an unusually demanding programme. Completed 2012.

Architect Brooks/Murray Architects



St Petersburg Place

St Petersburg Place, London W2

Construction of a large basement space in the garden of a pair of late Victorian Town houses that involved careful detailing to retain the adjacent gardens. The two town houses have been completely rebuilt behind a retained façade to form one large house with high specification building services. A new mews building was built at the back of the site to include a 'Nanny flat' above a double garage. All the site access was from the narrow rear mews making co-operative teamwork essential to success of the work on site. Completed 2007.

Architect McDowell & Bennedetti
 Value £2.7m



Chepstow Villas

Chepstow Villas, London W11

Refurbishment and extension of a Grade II listed 19th Century end of terrace house near Portobello Road in London. This included a new sub-basement to the rear of the existing basement and the infilling of a rear yard. The basement was formed using a combination of deep underpinning and contiguous piled walls. Completed 2009.

Architect Darling Associates



Holland Park

Holland Park, London W8

Refurbishment and subterranean extension of a Grade II listed 1862 Stucco residential property in Holland Park. The double storey basement extension includes a three metre deep swimming pool where the floor can be moved to adjust the depth of the water. It can also be raised completely to turn the space into a function room. The basement also houses a Jacuzzi, gym and squash court under a landscaped garden. A glass bottomed stream within the garden allows natural daylight into the basement area below. Completed 2011.

Architect Giles Quarme & Associates



Grove End Road

Grove End Road, London NW8

Restoration of a Grade II listed house on a large plot in the middle of St John's Wood. The house was owned and extensively altered by the well-known Victorian artist Sir Lawrence Alma-Tadema. The scheme includes a new three storey basement for swimming pools, a gym, a guest house, plus the addition of a new curved conservatory as well as internal alterations including a cantilevered stone staircase. Completed 2011.

Architect Timothy Hatton Architects