

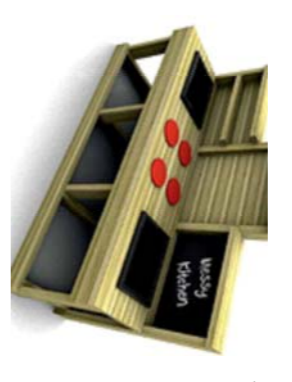
Wicksteed playscapes 'Freddie Frog'

Wicksteed playscapes 'Tony Turtle'

Wicksteed playscapes 'Bee Seat'



Wicksteed playscapes 'Messy Kitchen'



Wicksteed playscapes 'RainWheel'



Wicksteed playscapes 'Talking Flowers'



Wicksteed playscapes 'Gwydyr'



Wicksteed playscapes 'Copse'



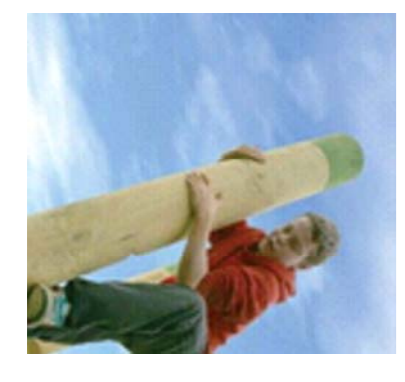
Wicksteed playscapes '2 seat log swing'



Wicksteed playscapes 'Springboard Seesaw'



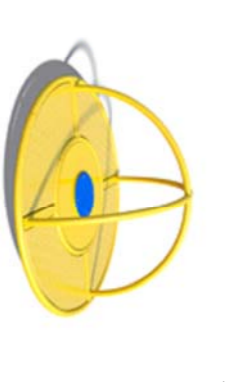
Wicksteed playscapes 'Stills'



Wicksteed playscapes 'Hammock'



Wicksteed playscapes 'Junior Comet'



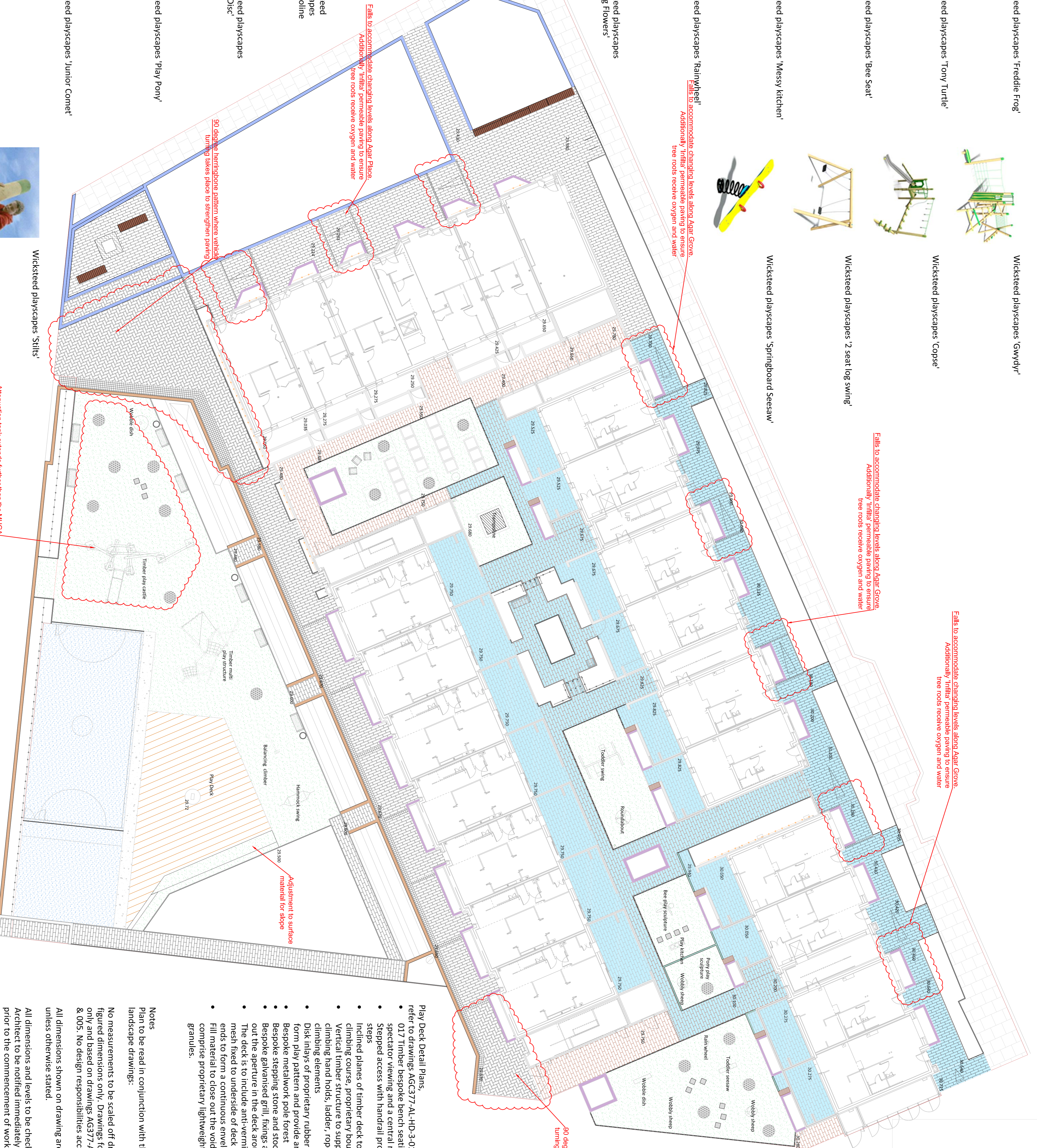
Wicksteed playscapes 'Play Pony'



Wicksteed playscapes 'Dizzy Disc'



Wicksteed playscapes 'Trampoline'



LEGEND (HARD WORKS)

- Make good stopping up to match existing paving and kerbs
- Permeable Charcon Andover
- Textured Infiltra range, colour Silver Fleck, 100mmW x 200mmL x 80mmD, staggered bond, sub-base to Engineer's recommendation for pedestrian traffic
- Charcon Andover 'Textured' range, colour 'Silver Fleck', 100mmW x 200mmL x 80mmD, staggered bond, sub-base to Engineer's recommendation for pedestrian traffic
- Charcon Andover 'Textured' range, colour 'Silver Fleck', 100mmW x 300mmL x 80mmD, staggered bond, sub-base to Engineer's recommendation for pedestrian traffic
- Charcon Andover 'Textured' range, colour 'Silver Fleck', 100mmW x 300mmL x 90mmD, 90° herringbone pattern, sub-base to Engineer's recommendation for vehicular traffic
- Charcon Andover 'Textured' range, colour 'Silver Fleck', 100mmW x 300mmL x 80mmD, staggered bond pattern, sub-base to Engineer's recommendation for vehicular traffic
- Charcon ECO CSK edging 125mmW x 255mmD x 914mm L, laid with upstand
- Charcon Flat Top edging 59mmW x 519mmD x 914mm L, laid flush
- Charcon ECO CSK edging 125mmW x 255mmD x 914mm L, laid flush
- Garden walls designed by others
- Reinforcing wall - to engineer's specification
- Right hand wall to be cast in situ concrete flag paving Series 200mm x 400mm x 40mm, with coping stone
- Marsfield GFA 917, 300mm W x 75mm D assorted lengths to fit, silver grey granite, diamond sawn finish
- Prefabricated plant containers - cast stone, light grey, 116 x 116 x 90mm high
- Raised brick plant containers - brick, bond and joints to match architectural brickwork of associated plot
- Natural stone coping - Marshfield GFA 917 300mm W x 75mm D assorted lengths to fit, silver grey granite, diamond sawn finish
- Sheffield Cycle Stand - Anthracite Grey 10L, 7016
- Timber decking - refer to drawing ref: ACG377-AL-HD-3-016
- MUGA - 3.0m high ball stop fence with 2 no. single gate access, proprietary porous coloured basketball hoops, line markings for informal games use for basketball and 5-a-side football
- Playtop safety surfacing, porous rubber crumb, sub-base to Engineer's recommendation
- Rainbow Green
- In situ concrete retaining walls and seating to MUGA and supporting fence to MUGA, detailing to engineer's specification
- Charcon ECO CSK 914mm x 290mm x 100mm SQ laid with upstand, or Charcon ECO CSK 914mm x 290mm x 200mm SQ laid flush
- Jones of Oswestry Arbor-Stat recessed tree surround - Product code: DPA/6/SP/1060/15/105/84/M2, 2000 x 2000mm overall with 1060mm square aperture for tree
- Edging to tree planting pit - Steel edge 200mm high with welded flanges for fixing, to form 1200mm diameter circular form to tree surround within soft play area.
- Escotek, Benco Kiwi bench, 1800mm L x 610mm W x 830mmH or 600L x 610W x 830 with backrest/450 to seat 1H mm.
- Bespoke seating built into planters - natural Bolonjo timber, planed sanded seat and back, 30 x 30mm section x 1120 and 1200mm lengths, refer to drawing ref: ACG377-AL-HD-3-003
- Timberplay Moon timber bench, 1100 1800L x 770mmW x 400mmH and 1100 3000L x 740mmW x 400mmH with backrest and 210 3000L x 740mmW x 400mmH without backrest
- Timber Cube Seat, Terence Whewell solid oak cube seat 450L x 450W x 350mmH
- Metal trellis bespoke - refer to drawing ref: Anthracite Grey, ACG377-AL-HD-3-013
- Pergola metalwork bespoke - refer to drawing ref: Anthracite Grey, ACG377-AL-HD-3-014
- Steel rope trellis system - Jakon Inox system, stainless steel rope wire, 4mm diameter.
- Horizontal wires fixed at 300mm vertical centres from ground level up to 2500mm
- Bin - Aeca Circular Litter Bin / ARC5 GPPC, 50L capacity

Fails to accommodate changing levels along Agar Grove. Additionally 'Infiltra' permeable paving to ensure tree roots receive oxygen and water

Fails to accommodate changing levels along Agar Grove. Additionally 'Infiltra' permeable paving to ensure tree roots receive oxygen and water

Fails to accommodate changing levels along Agar Grove. Additionally 'Infiltra' permeable paving to ensure tree roots receive oxygen and water

Fails to accommodate changing levels along Agar Plaza. Additionally 'Infiltra' permeable paving to ensure tree roots receive oxygen and water

90 degree herringbone pattern where vehicle turning takes place to strengthen paving

Adjustment to surface material for slope

90 degree herringbone pattern where vehicle turning takes place to strengthen paving

Attenuation tank extends further than the MUGA and would conflict with tree roots so play equipment and trees have been moved. There are still the same amount of trees and play equipment being specified

- Play Deck Detail Plans,** refer to drawings ACG377-AL-HD-3-016 & 017 Timber bespoke bench seating for MUGA spectator viewing and a central raised blinth to deck
- Stepped access with handrail provision and seating steps
 - Inclined planes of timber deck to take proprietary rope climbing course, proprietary bouldering hand holds
 - Vertical timber structure to support proprietary climbing hand holds, ladder, rope climb and hoop climbing elements
 - Disk inlays of proprietary rubber compound material to form play pattern and provide anti-slip surfaces.
 - Bespoke metalwork pole forest
 - Bespoke stepping stone and stool seating play element
 - Bespoke galvanised grill, fixings and supports to close out the aperture in the deck around the existing tree. The deck is to include anti-vermin galvanised steel mesh fixed to underside of deck boards with buried ends to form a continuous envelope below the deck. Fill material to close out the void below the deck to comprise proprietary lightweight expanded clay granules.

Notes
Plan to be read in conjunction with the engineer and landscape drawings:

- No measurements to be scaled off drawing. Worked from figured dimensions only. Drawings for planning purposes only and based on drawings AG377-AL-HD-1-002, 003, 004 & 005. No design responsibilities accepted.
- All dimensions shown on drawing are shown in millimetres unless otherwise stated.
- All dimensions and levels to be checked on site. Landscape Architect to be notified immediately of any discrepancies prior to the commencement of works.

JO WILD LANDSCAPES

Landscape Architect
Tel: 07867 336 117
Email: jfwild@btinternet.com