

PHASE A NORTHERN GARDEN AREA

Trees (n = native, w = wildlife friendly)			
Name	Girth	Root condition	Habit
Pyrus calleryana 'Chanticleer' (w)	20-25cm	Bare root	Conical with white spring flowers and small fruits up to 8cm
Malus sylvestris (n)	10-12cm	Bare root	Small native crab apple tree up to 12m
Sorbus aucuparia (n)	10-12cm	Bare root	Malive tree to 12m red berries in autumn
Quercus robur 'Fastigata' (w)	12-14cm	Bare root	15m English specimen tree with upright habit

Specimen shrubs (n = native, w = wildlife friendly)			
Name	Pot Size	Height	Habit
Hemerocis x intermedia 'Arnolds Promise' (w)	15l	180-200cm	up to 4m high with good autumn colour and yellow winter flowers
Hemerocis x intermedia 'Orange Beauty' (w)	15l	180-200cm	up to 4m high with good autumn colour and orange winter flowers

Shrubs and Perennials (n = native, w = wildlife friendly BR = bare rooted)			
Name	Pot Size	Height	Habit
Alchemilla mollis (w)	21	20-30cm	Native purple leaved ground cover with blue flowers summer 30cm
Alchemilla mollis (w)	21	20-30cm	Perennial with pale green flowers up to 30cm
Anemone hepatica 'September Charm' (w)	21	20-30cm	Late summer pink flowers 50cm
Anemone nemorosa (n)	21	20-30cm	Woodland white or blue spring flower 30cm
Carex pendula (n)	31	20-40cm	Pendulous sedge up to 1.5m
Cornus sanguinea (n)	BR	20-40cm	Winter red stems native plant
Dryopteris filix-mas (n)	51	30-40cm	Semi evergreen native fern 150cm
Galium odoratum (n)	21	20-30cm	Spreading herbaceous perennial with white spring flowers up to 50cm
Geranium phaeum 'Album' (w)	21	20-30cm	Summer flowers white - clump forming 50cm
Heleborus x hybridus 'Gladys Burrow' (w)	31	20-30cm	Deciduous perennial with late winter spring dark pink flowers up to 50cm
Heleborus x hybridus 'Helena Hall' (w)	31	20-30cm	Deciduous perennial with late winter spring white to pink flowers up to 50cm
Luzula nivea (n)	21	40cm	Evergreen perennial with glossy pale green leaves and white flowers up to 1m
Luzula sylvatica (n)	21	40cm	Evergreen perennial with glossy pale green leaves up to 1m
Polystichum aculeatum (n)	21	30-40cm	Evergreen native fern Shield fern up to 1m
Polystichum aculeatum (n)	31	30-40cm	Evergreen native fern Shield fern up to 1m
Ribes sanguinea (n)	BR	40-60cm	Native current flowers in spring 2.5m
Rosa canina (n)	BR	40-60cm	Native climbing rose
Sambucus nigra (n)	BR	40-60cm	Native shrub with white berries and yellow flowers
Viburnum opulus (n)	BR	40-60cm	Native shrub with white flowers colour in autumn up to 150cm

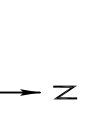
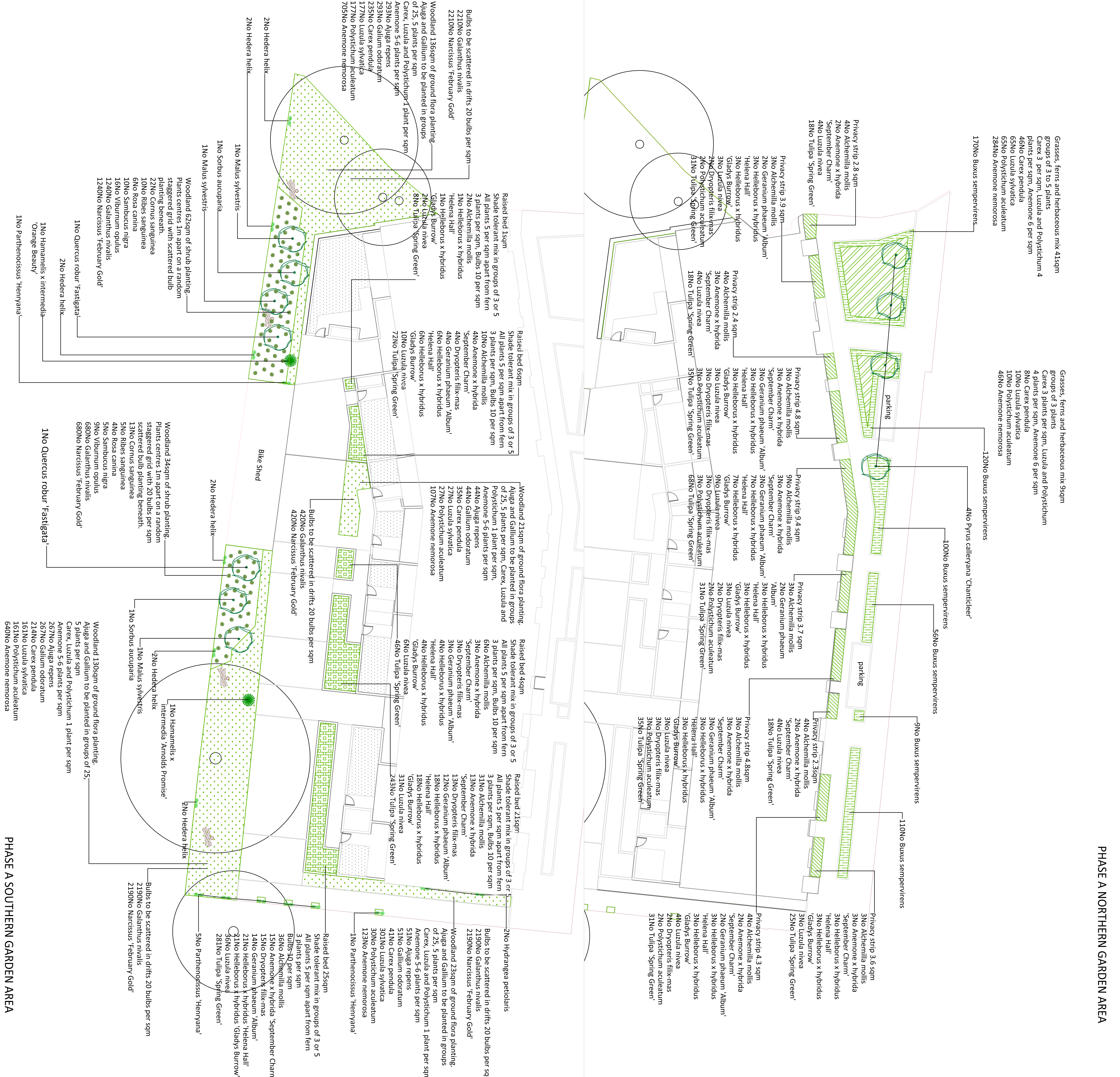
Hedging plants (n = native, w = wildlife friendly)			
Name	Pot Size	Height	Habit
Buxus sempervirens (w)	5l	60cm	Ever green shrub

Climbers (n = native, w = wildlife friendly)			
Name	Pot Size	Height	Habit
Parthenocissus 'Hemenna' (w)	10l	60cm	Deciduous red to silver/green climber up to 12m
Hedera helix (n)	10l	60cm	Variegated large leaved Ivy up to 3m
Hydrangea petalalis (w)	10l	60cm	Deciduous self supporting climber with white flowers good in shade

Bulbs (n = native, w = wildlife friendly)			
Name	Pot Size	Mature Height	Habit
Galanthus nivalis (n)	loose bulb	15cm	Early spring white flowers
Narcissus 'February Gold' (w)	loose bulb	50cm	Pale yellow in spring
Tulipa 'Spring Green' (w)	loose bulb	50cm	Spring white flower



- The planting shall be carried out in the first planting (seeding) season following completion of the development (between December and March inclusive).
- All plant stock, plant handling and planting to be undertaken in accordance with the following British Standard Specifications and Code of Practice:
- BS 3936:1992 Part 1 Nursery Stock - Specification for trees and shrubs;
  - BS 3936:1998 Part 10 Nursery Stock - Specification for ground cover plants;
  - BS 4428:1989 - Code of Practice for General Landscaping Operators (excluding hard surfaces);
  - BS 8545:2014 Trees from Nursery to Independence in the Landscape;
  - The Code of Practice for Plant Handling 2002 (Horticultural Trades Association).

- LEGEND (SOFT WORKS)**
- Retained tree
  - Heavy standard or semi mature tree
  - Multistemmed shrub
  - Woodland shrub
  - Grasses, ferns and herbaceous mix
  - Hedging
  - Privacy strips
  - Raised beds
  - Woodland shrubs
  - Woodland ground flora
  - Climber
  - Ornamental Lawn Turf - Arena Bargold
  - Log pile refugia - site won't timber as hibernacular

**Notes**

Drawing for planning purposes

Plan to be read in conjunction with the engineer and landscape drawings:

No measurements to be scaled off drawing. Worked from figured dimensions only.

All dimensions shown on drawing are shown in millimetres unless otherwise stated.

All dimensions and levels to be checked on site. Landscape Architect to be notified immediately of any discrepancies prior to the commencement of works.

**JO WILD LANDSCAPES**

Landscape Architect  
 Tel: 07867 336 117  
 Email: jimwild@btinternet.com

Client: Hill Partnerships Ltd  
 Project: Agri Grow - Phase 1A  
 Drawing Title: Soft works  
 Scale: 1:200 @ A2  
 Date: August 2016  
 Drawing Number: 1042-01  
 Revision Number: C