

CONSULTANCY, SITE INVESTIGATION  
CONSTRUCTION MATERIALS TESTING,  
CONTAMINATED LAND SURVEYS, DESK  
STUDIES, RISK ASSESSMENT.



DESK STUDY & STAGE I RISK ASSESSMENT APPENDIX D  
FOR  
97 CAMDEN MEWS,  
LONDON,  
NW1 9BU.

DATE: July 2017

REPORT NO: 171581/DS



60 Station Road, Chingford, London E4 7BE Tel: 020 8559 3134 Fax: 020 8559 3135

Email: [mail@mrhgeotechnical.com](mailto:mail@mrhgeotechnical.com) Website: [www.mrhgeotechnical.co.uk](http://www.mrhgeotechnical.co.uk)

Director: S.J. Hudson BSc Associates: S. Corrigan BSc MSc DIC FGS S Brooks BEng (Hons)

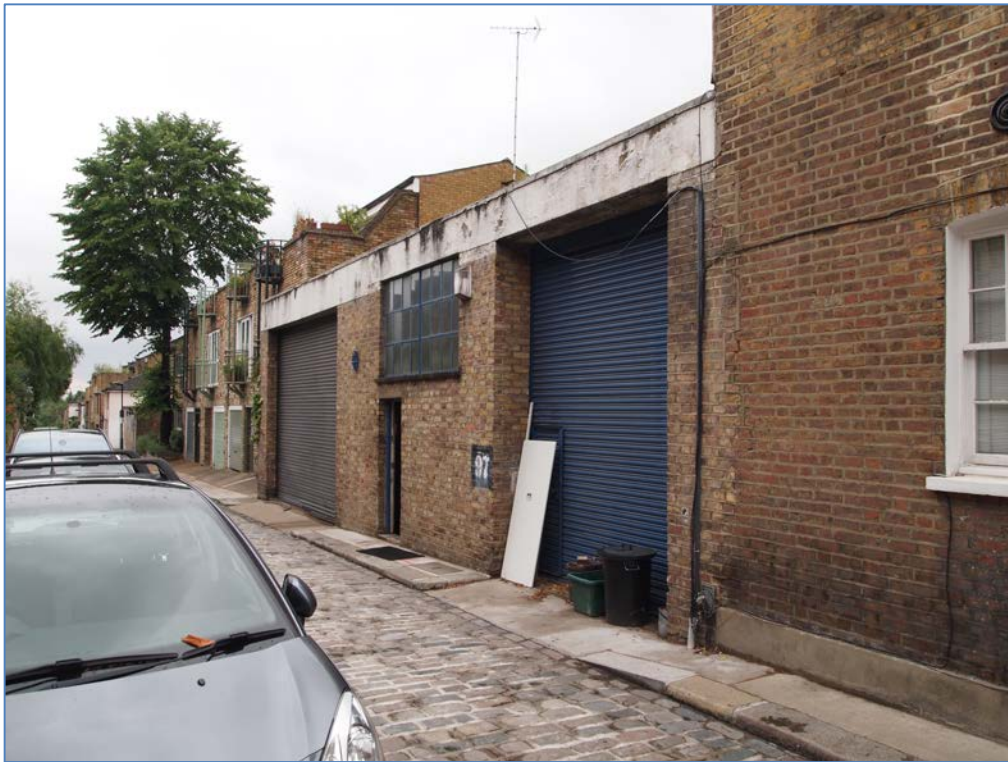
Consultants: E.J. Murray BSc, PhD, CEng, FICE, CGeol, FGS, MaPS D.W.Rix BSc, MSc, CEng, MICE A.W. Hutchings MIAT



**APPENDIX D**  
**PHOTOGRAPHS**



Site Frontage from Camden Mews.



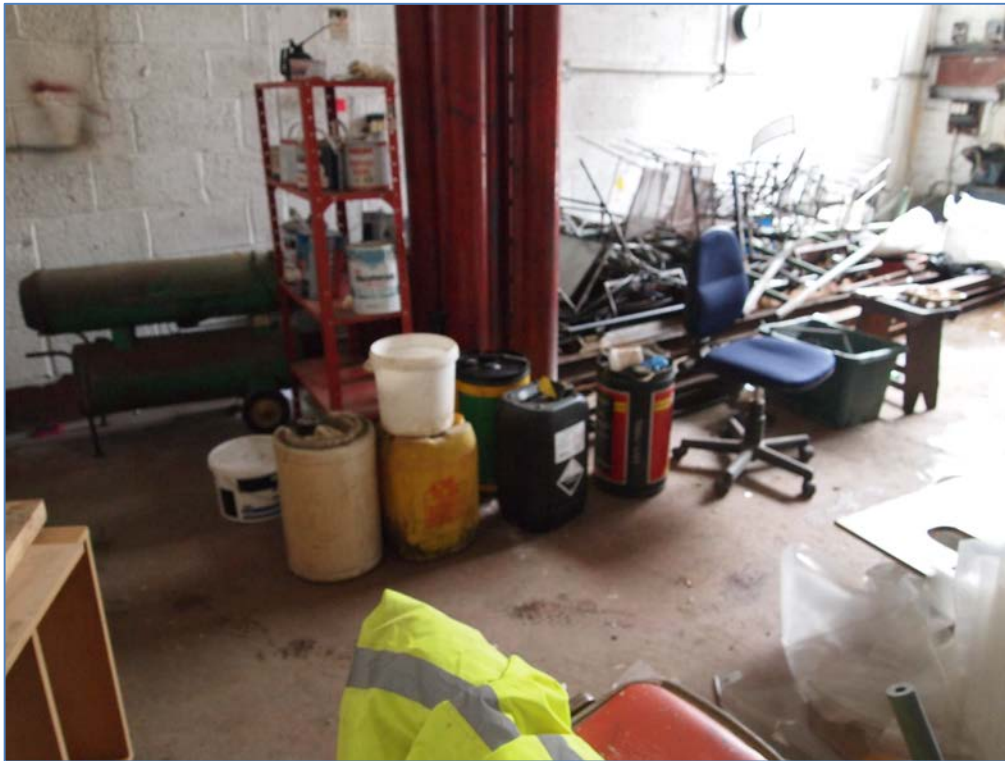
Site Frontage from Camden Mews.



Main Workshop.



South-western wall of Main Workshop.



Drums and Scrap Metal in Main Workshop.



Waste Oil Tank against south-western boundary wall.



Existing Inspection Chamber in Main Workshop.



Trial Pits in Main Workshop.



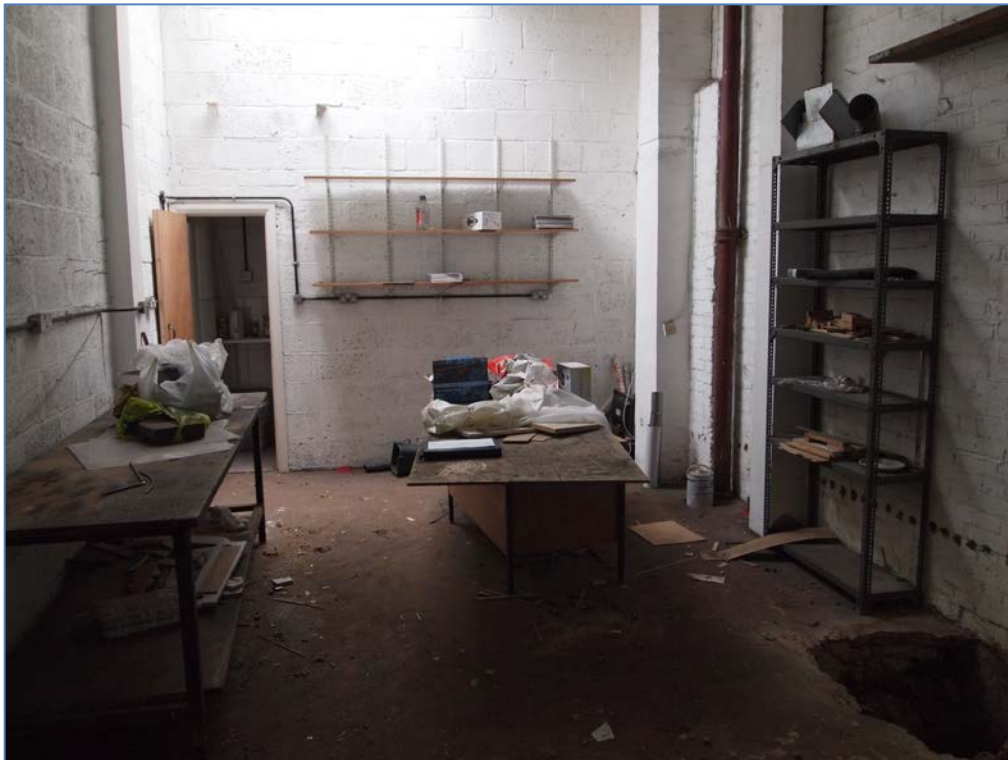
Trial Pit in Main Workshop.



Trial Pit in Main Workshop.



Smaller Workshop.



Smaller Workshop.





Inspection Chamber in Smaller Workshop.



Trial Pit in Smaller Workshop.

