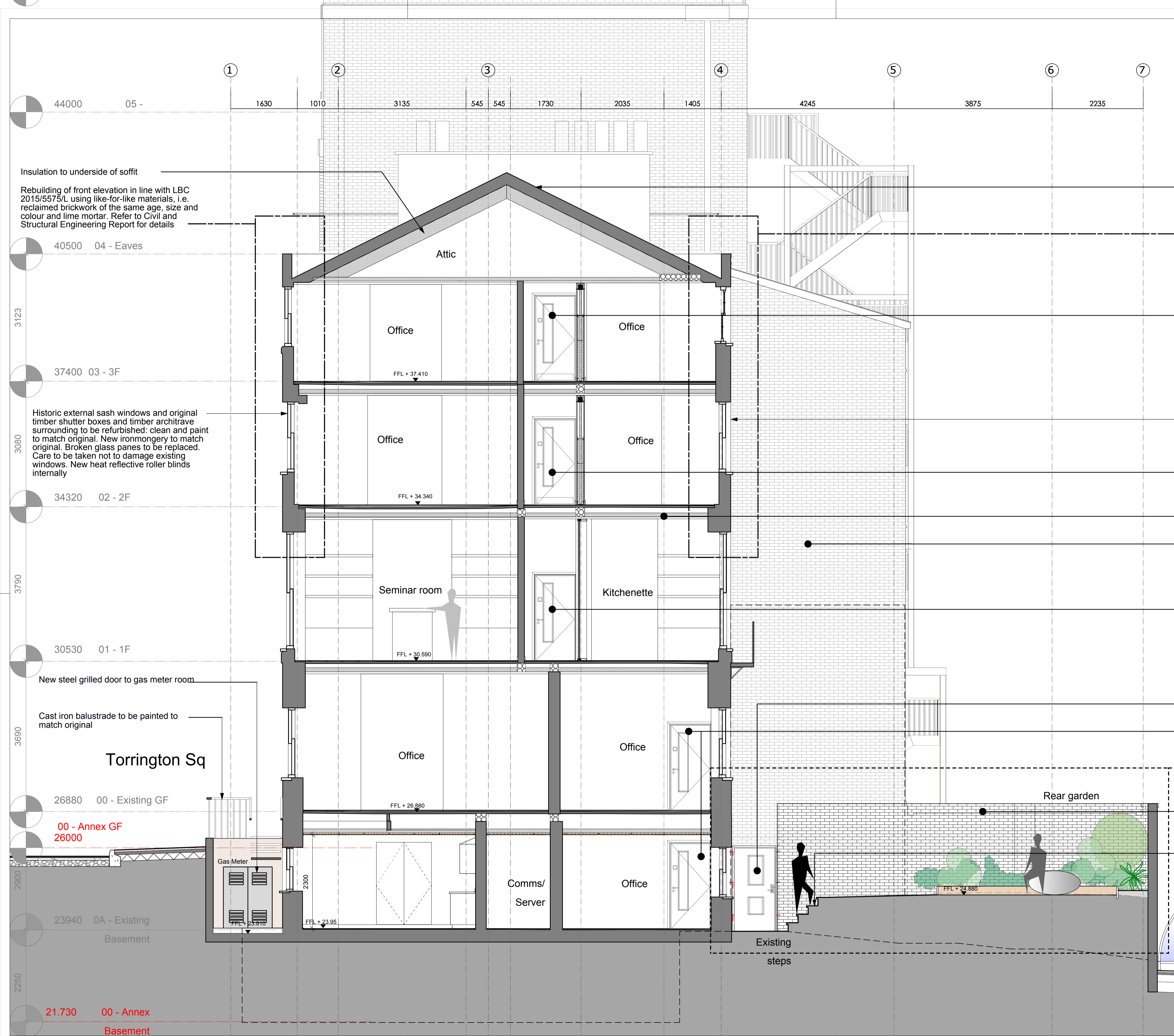
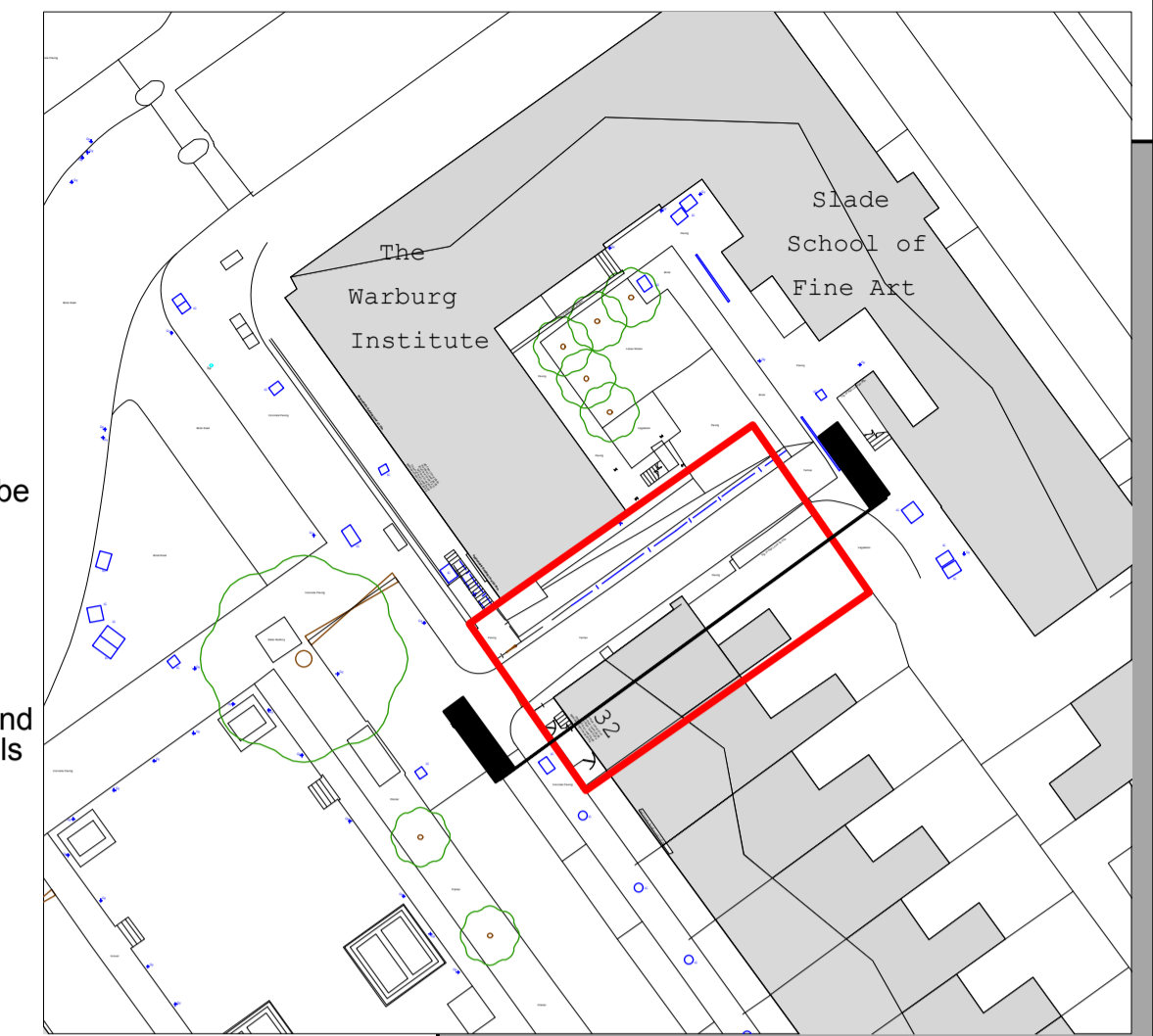


NOTE
Refer to Floor Finishes Plan
Reflected Ceiling Plans for
finishes



Existing coping to be made good where necessary. Broken roof tiles to be replaced by reclaimed tiles to match existing.

Rebuilding of front elevation using like-for-like materials, i.e. reclaimed brickwork of the same age, size and colour and lime mortar. Refer to Civil and Structural Engineering Report for details

New doors and architraves between Nos. 32 and Annex to be contemporary to show the historic from the modern. Finish TBC

Historic external sash windows and original timber shutter boxes and timber architrave surrounding to be refurbished: clean and paint to match original. New ironmongery to match original. Broken glass panes to be replaced. Care to be taken not to damage existing windows. New heat reflective roller blinds internally

New doors and architraves between Nos. 32 and Annex to be contemporary to show the historic from the modern. Finish TBC

Acoustic insulation in between existing floor boards. Refer to Structure Engineers report for floor make up.

Metal facade system. Proteus HR Zinc EI Zinc Rainbow Red finish.

New doors and architraves between Nos. 32 and Annex to be contemporary to show the historic from the modern. Finish TBC

New door to rear garden to be powdercoated aluminum framed glazed door. RAL color 7011

New doors and architraves between Nos. 32 and Annex to be contemporary to show the historic from the modern. Finish TBC

Refer to Wilder Associates landscape design for planting details

Wall to be rebuilt in same brick bond as existing using existing brick and lime mortar. Where brickwork is broken suitable reclaimed replacement bricks will be used matching the color, age and size as the existing.

Reconstructed stone stairs to be rebuilt with cast iron balustrade painted black to match existing

Broxap Galvanized steel sheffield cycle shelter

6no. Galvanized steel Sheffield cycle stands root base fixing 950x750

Proposed Section DD
1:50

Suitability	Revision	Date	Comments
SO	P1.0	[DD/MM/YYYY]	[e.g. Issue for review to Lead Designer]

A1

© copyright BISSET ADAMS

Notes
No dimensions are to be scaled from this drawing. The contractor / manufacturer is responsible for checking all dimensions and querying any discrepancies.
This drawing is the property of Bisset Adams Ltd.
Copyright is reserved by Bisset Adams Ltd. and the drawing is issued on condition that it is not copied, reproduced, retained or disclosed to any unauthorised person, either wholly or in part, without written consent.

Project: CBCD Toddler Laboratory
Logo: Birkbeck UNIVERSITY OF LONDON

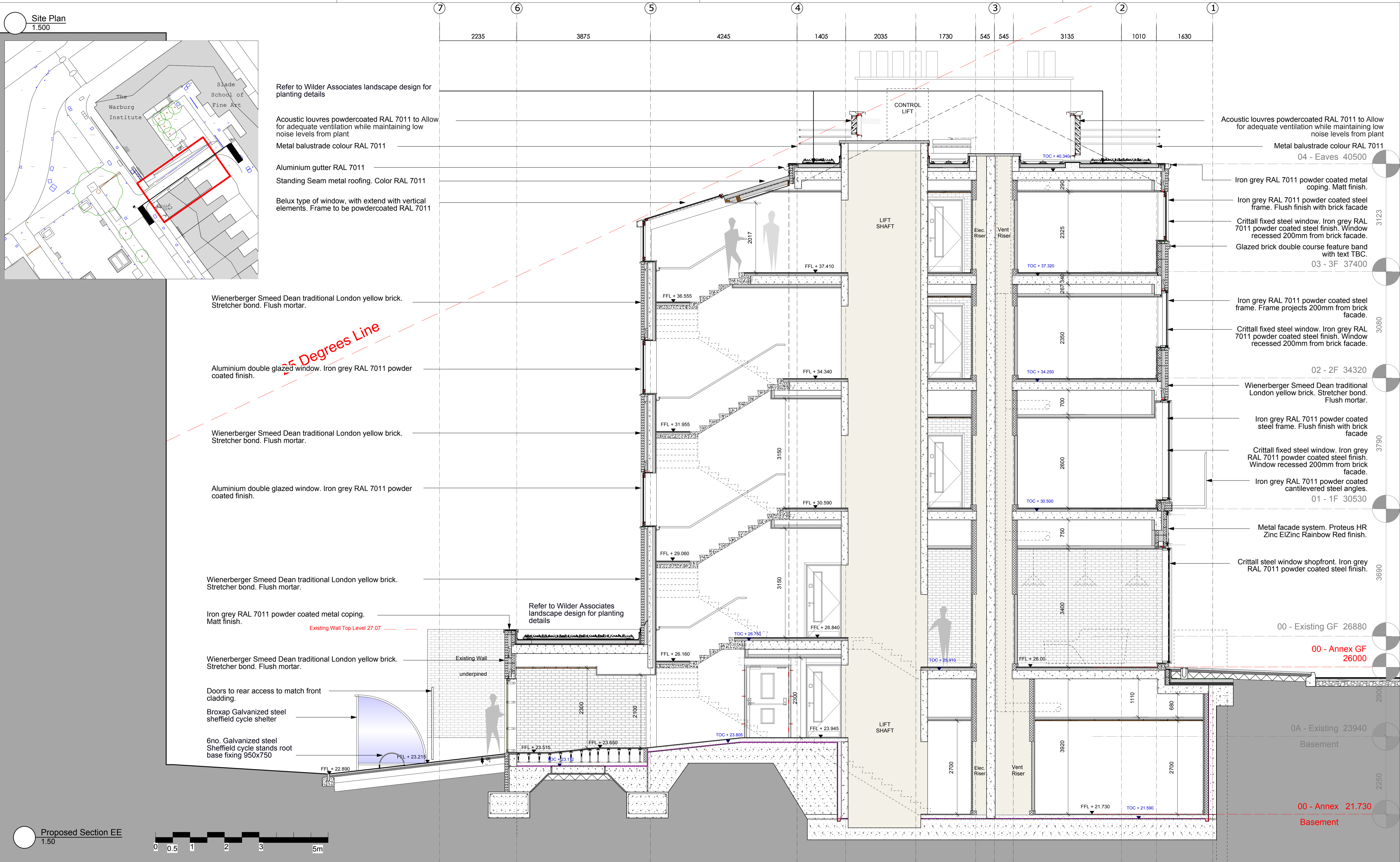
Key: 32 Torrington Square
Bloomsbury
London
WC1E7HX
Birkbeck University of London

Information Title: Proposed - Section DD

Date	17.01.17	Drawn	RP	Checked	IJ	Scale	1:50
Project No.	BB029	Originator	BA	Zone	00	Level	00
Type	DR	Role	A	Number	3104	Suitability	S0
Revision	P1						

The Cube Building, 17 -21 Wenlock Road, London N1 7GT, United Kingdom
T +44 (0)20 7250 0440 | E info@bissetadams.com | www.bissetadams.com

BISSET ADAMS



Suitability	Revision	Date	Comments
SO	P1.0	[DD/MM/YYYY]	[e.g. Issue for review to Lead Designer]

A1

© copyright BISSET ADAMS

Notes

No dimensions are to be scaled from this drawing. The contractor / manufacturer is responsible for checking all dimensions and querying any discrepancies.

This drawing is the property of Bisset Adams Ltd.

Copyright is reserved by Bisset Adams Ltd. and the drawing is issued on condition that it is not copied, reproduced, retained or disclosed to any unauthorised person, either wholly or in part, without written consent.

Project: CBCD Toddler Laboratory

Logo

32 Torrington Square
Bloomsbury
London
WC1E7HX
Birkbeck University of London

Information Title: Proposed - Section EE

Date: 17.01.17

Drawn: RP

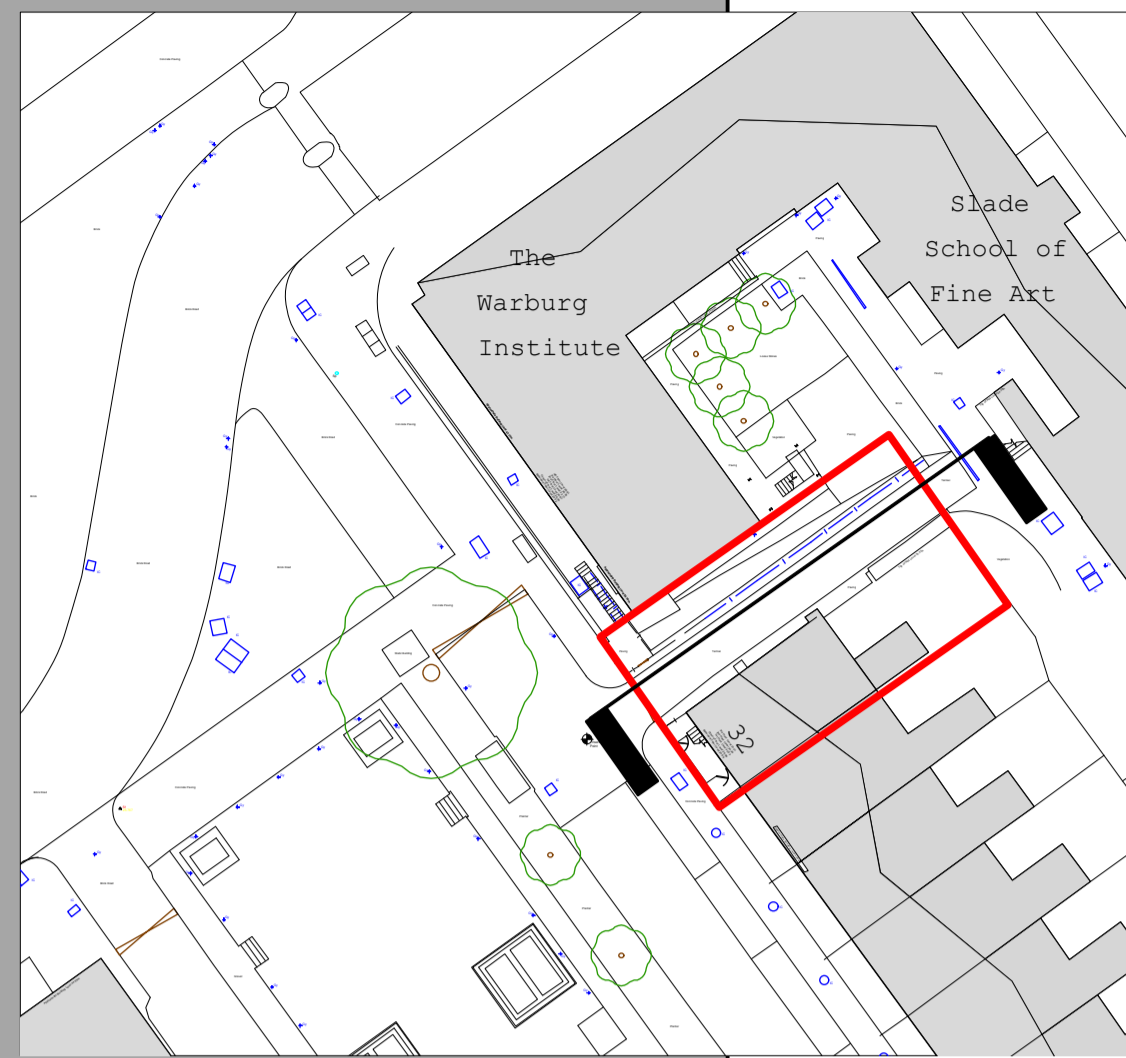
Checked: IJ

Scale: 1:50

Project No.	Originator	Zone	Level	Type	Role	Number	Suitability	Revision
BB029	BA	00	00	DR	A	3105	SO	P1

The Cube Building, 17 -21 Wenlock Road, London N1 7GT, United Kingdom
T +44 (0)20 7250 0440 | E info@bissetadams.com | www.bissetadams.com

Site Plan
1:500



Refer to Wilder Associates landscape design for planting details

Acoustic louvres powdercoated RAL 7011 to Allow for adequate ventilation while maintaining low noise levels from plant

Metal balustrade colour RAL 7011

Aluminium gutter RAL 7011

Standing Seam metal roofing. Color RAL 7011

Belux type of window, with extend with vertical elements. Frame to be powdercoated RAL 7011

Wienerberger Smeed Dean traditional London yellow brick. Stretcher bond. Flush mortar.

Aluminium double glazed window. Iron grey RAL 7011 powder coated finish.

Wienerberger Smeed Dean traditional London yellow brick. Stretcher bond. Flush mortar.

Aluminium double glazed window. Iron grey RAL 7011 powder coated finish.

Wienerberger Smeed Dean traditional London yellow brick. Stretcher bond. Flush mortar.

Iron grey RAL 7011 powder coated metal coping. Matt finish.

Wienerberger Smeed Dean traditional London yellow brick. Stretcher bond. Flush mortar.

Doors to rear access to match front cladding.

Broxap Galvanized steel sheffield cycle shelter

6no. Galvanized steel Sheffield cycle stands root base fixing 950x750

Refer to Wilder Associates landscape design for planting details

25 Degrees Line

Proposed Section FF
1:50



Suitability	Revision	Date	Comments
SO	P1.0	[DD/MM/YYYY]	[e.g. Issue for review to Lead Designer]

A1

© copyright BISSET ADAMS

Notes
No dimensions are to be scaled from this drawing. The contractor / manufacturer is responsible for checking all dimensions and querying any discrepancies.
This drawing is the property of Bisset Adams Ltd.
Copyright is reserved by Bisset Adams Ltd. and the drawing is issued on condition that it is not copied, reproduced, retained or disclosed to any unauthorised person, either wholly or in part, without written consent.

Project
CBCD Toddler Laboratory
Key
32 Torrington Square
Bloomsbury
London
WC1E7HX
Birkbeck University of London



Information Title									
Proposed - Section FF									
Date	Drawn	Checked	Scale						
17.01.17	RP	IJ	1:50						
Project No.	Originator	Zone	Level	Type	Role	Number	Suitability	Revision	
BB029	BA	00	00	DR	A	3106	SO	P1	
The Cube Building, 17 -21 Wenlock Road, London N1 7GT, United Kingdom T +44 (0)20 7250 0440 E info@bissetadams.com www.bissetadams.com									

