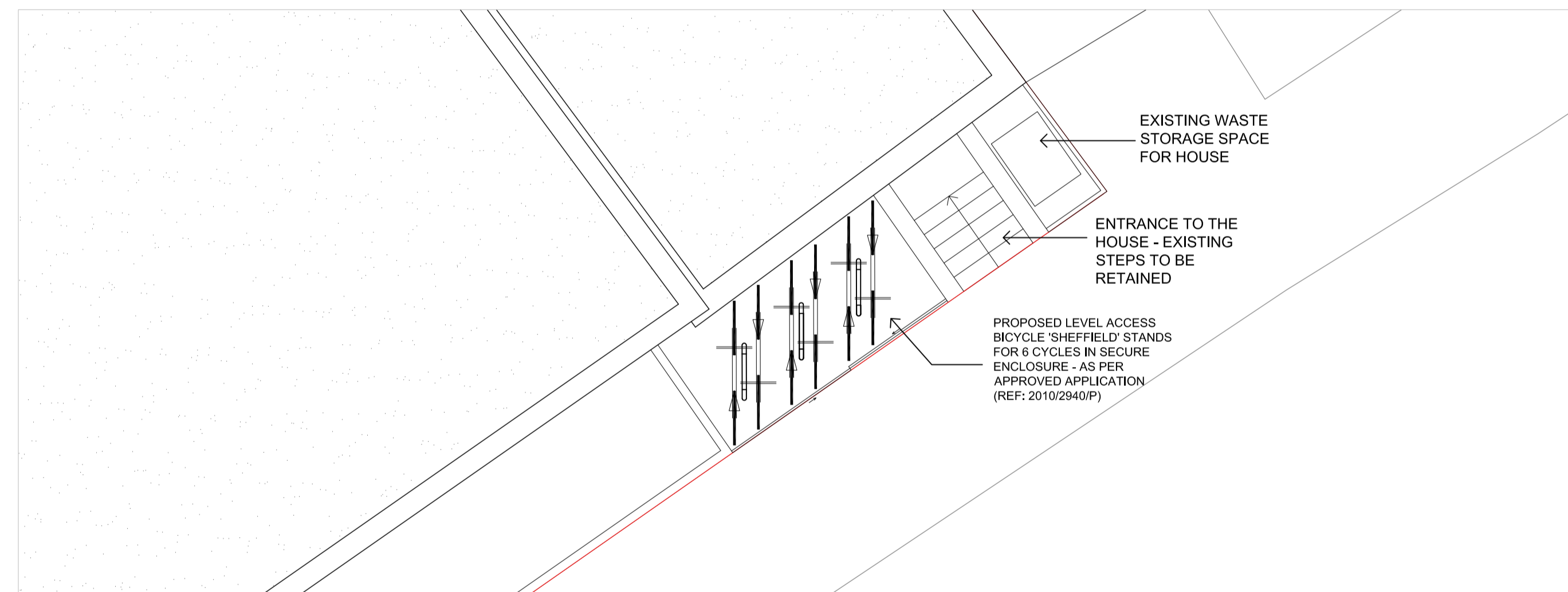


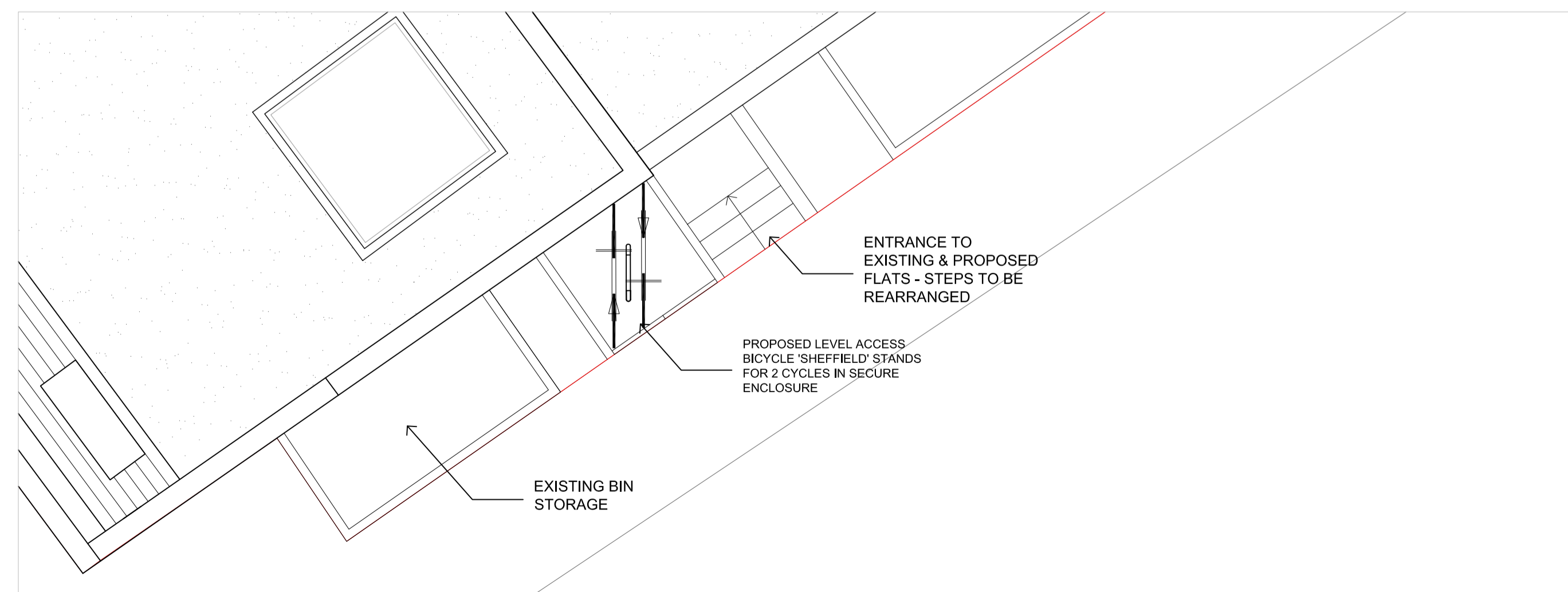
PREVIOUSLY APPROVED SITE PLAN
SCALE 1:100



PREVIOUSLY APPROVED ELEVATION - CYCLE PARKING
SCALE 1:50



PREVIOUSLY APPROVED - CYCLE PARKING
SCALE 1:50



PREVIOUSLY APPROVED PLAN - CYCLE PARKING
SCALE 1:50

PREVIOUSLY APPROVED APPLICATION - REFERENCE: 2015/4296/P

Rev.	Date	Description	Init.
-	-	-	-

Client
TRANSEUR PROPERTIES LTD.

Project Title
PROPOSED THIRD FLOOR EXTENSION

34-38 EVERS HOLT STREET, LONDON, NW1 1DA

Drawing Title
PREVIOUSLY APPROVED BLOCK PLAN - CYCLE STORAGE (REF: 2015/4296/P)

Rev.	Date	Description	Init.
-	-	-	-

Project No. 1528
Drawing No. P103
Revision -

SCP ARCHITECTS LTD
ARVYLE HOUSE,
JOEL STREET,
NORTHWOOD HILLS,
MIDDLESEX, HA6 1NW.
telephone : 01923 840077
fax : 01923 840078

This drawing is property of SCP Architects Ltd © and must not be copied or otherwise reproduced. All dimensions must be checked on site before commencing work. No dimensions must be scaled from this drawing. This drawing was produced using AutoCad 2006.

PLANNING ISSUE