

Heritage, Design & Access Statement addendum regarding gates Grove End House

This document describes the historical research and design development work that has been carried out in response to a request from the Heritage and Conservation Officer (HCO). The HCO asked the applicant (email dated 19.07.17) to rework the design of the new gates and the windows / glazed doors between the master bedroom and the belvedere terrace.

New gates

The previous design for the gates was based on an analysis of architectural metalwork in the local area and was described in the Heritage Design & Access Statement. There is a late C19th / early C20th photograph showing gates on Grove End House (see figures 1 & 2).



Figure 1: Grove End House in late C19th / early C20th



Figure 2: Detail of gates

These gates were previously thought to be a Victorian addition and were consequently not taken as the starting point for the design of the new gates. Cross-referencing to source books on Georgian architecture, the applicant is now convinced that the gates in the photographs are the originals. By counting the uprights, aligning with the grooves in the gate piers and following historical guidance on dimensions, a faithful reproduction of the original is possible. The main sources for the details have been measurements from existing railings in Grove Terrace (figures 3 & 4) and a document titled 'Railings in Westminster – A Guide to their Design, Repair and Maintenance' published by the City of Westminster.



Figure 3: Grove Terrace railing head

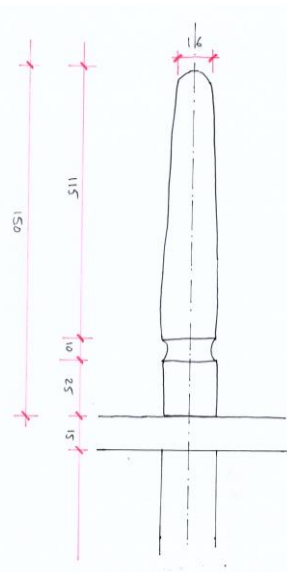


Figure 4: Dimensioned sketch of railing head

Heritage, Design & Access Statement addendum regarding gates Grove End House

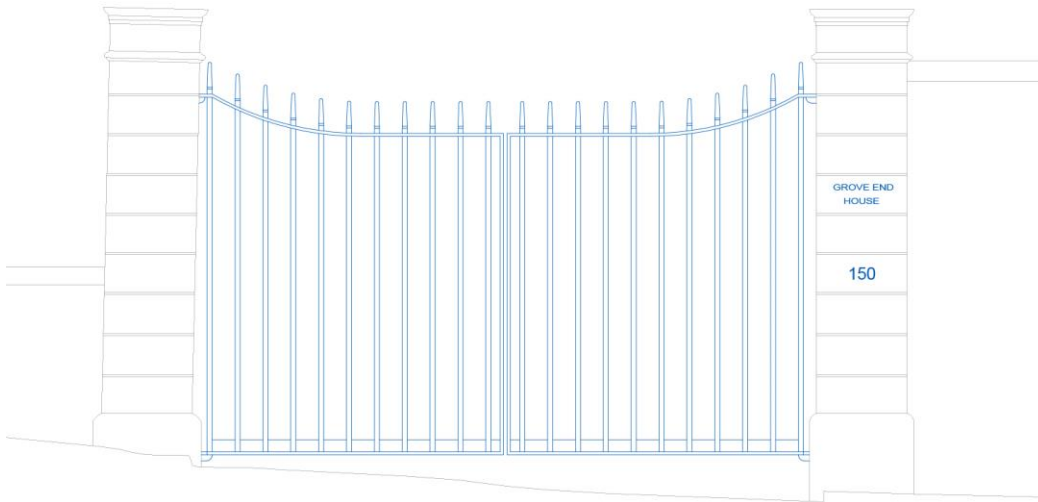


Figure 5: Revised design for gates based on photographic records and measured historical details

Master bedroom window

The HCO requested the applicant to rework the design of the master bedroom windows / glazed doors so that it would have a more traditional appearance due to this element being visible from certain viewpoints. The applicant explored a number of options including the following:

1. Applying the same arrangement of glazing bars as the other second floor windows (which in turn had been based on the existing 'six-over-six' windows below)
2. Applying the same arrangement of glazing bars as the windows on the belvedere and the ground floor French windows which feature slightly larger panes than the 'six-over-six' windows

Option 1 resulted in a 'busy' appearance of glazing bars that was felt to be less consistent than the Option 2 in terms of how the new glazed doors related to the other door-sized elements of existing glazing. Option 2 is shown in figure 6 below.

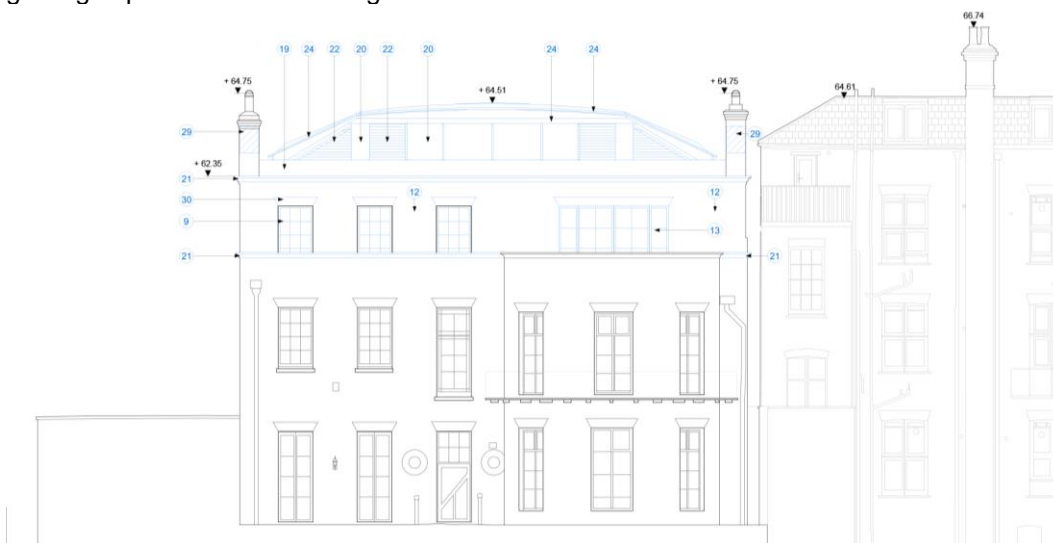


Figure 6: Revised design for master bedroom windows Option 2

Heritage, Design & Access Statement addendum regarding gates Grove End House

A further refinement was explored which involved subdividing the glazed element into a main, central opening containing the glazed doors with smaller windows either side (separated from the glazed doors with brickwork). This is shown in figure 7 below.



Figure 7: Revised design for master bedroom windows Option 3

This use of a central window with smaller windows either side features in a number of Georgian buildings and is often used to reinforce lines of symmetry and to 'tune' the proportions of a facade in order to arrive at the right balance between walls and windows (see figures 8 & 9 below).

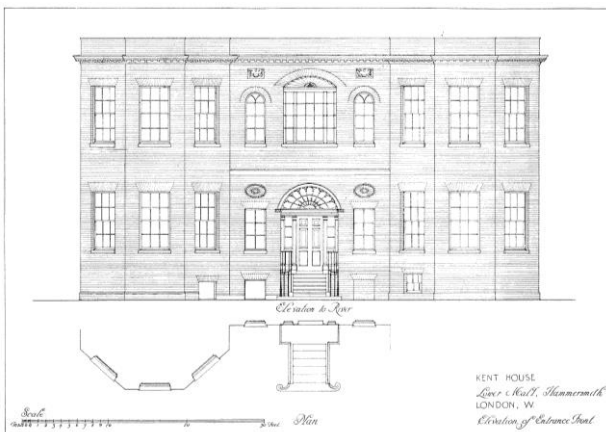


Figure 8: Kent House, London



Figure 9: Linden House, London

The applicant considers Option 3, with the subdivided windows, to be the most successful for Grove End House because it establishes a more satisfactory formal relationship with the belvedere windows below, it reinforces the symmetry of the belvedere and it avoids the large areas of blank brickwork that can be seen in Option 2 either side of the window.