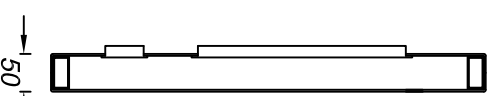
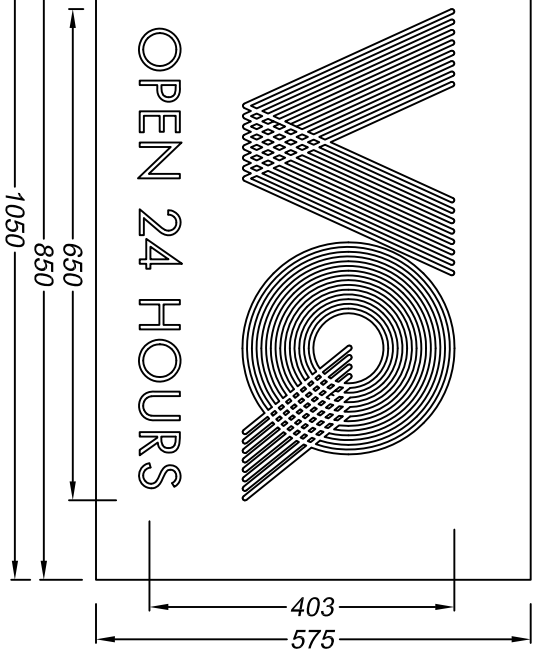
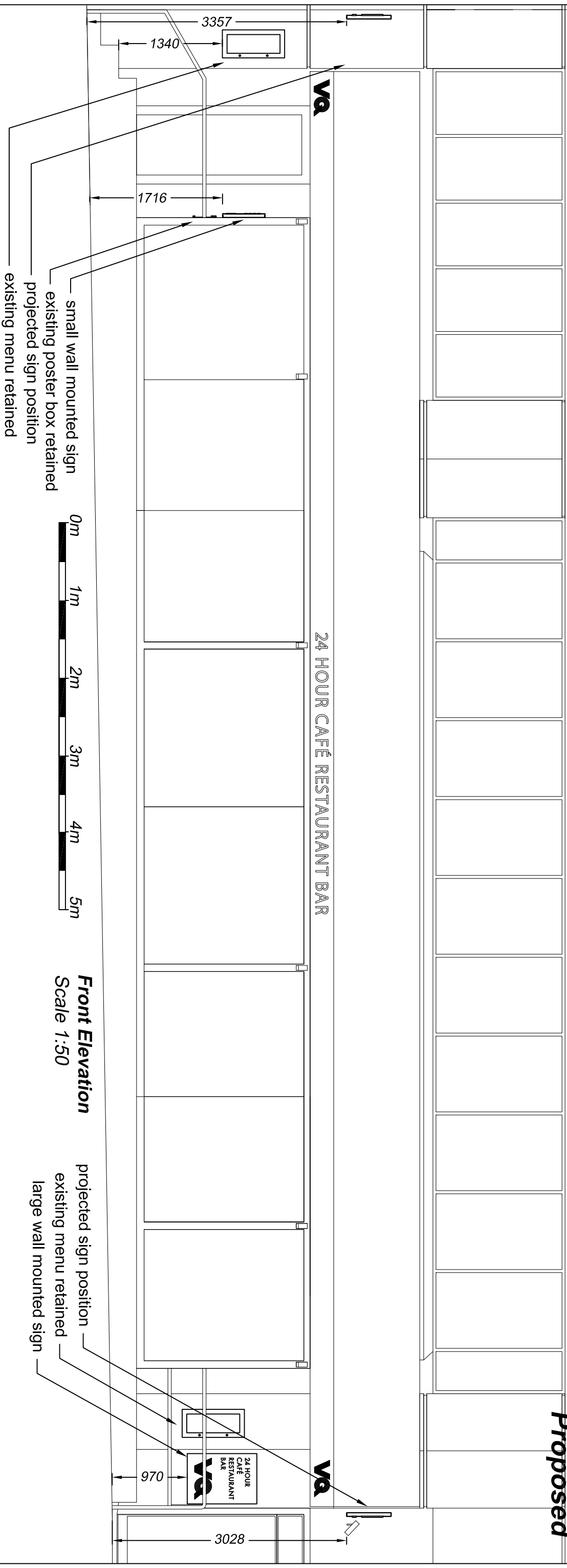


**Proposed**



Projected sign - 2 off  
Scale 1:10

Folded and welded 2.5mm aluminium outer panels are finished black. 'VQ' text has multiple parallel lines fret cut into one of the panel faces and this is fitted with 15mm red acrylic.

'OPEN 24 HOURS' text is also fret cut into the panel face and is fitted with 15mm opal acrylic.

Panels fit around a steel inner frame and the fixing arms are covered by a folded and welded 2.5mm aluminium shroud finished black.


Fixing plate has four M10 bolt fixings into the wall.

Side without text is obscured by the awning.

Letters are internally illuminated by low energy white LEDs.



B	Menu shown Projecting signs moved	18/07/17
A	Menu shown, proj sign raised, page number reallocated	12/07/17

		<b>Technical Signs</b> Floor 1 - Unit 3 Hillie Business Centre 132 St Albans Road Watford, Herts, WD24 4AE Tel: 01923 811999 Fax: 01923 811998 E-mail: <a href="mailto:info@technicalsigns.co.uk">info@technicalsigns.co.uk</a>	
<b>Client</b> VQ		<b>Address/Job details</b> 111a Great Russell St Fitzrovia WC1B 3NQ	
<b>Proposed Signs</b>		<b>Job No</b> _____ <b>Drawing No</b> _____ <b>Date</b> 15/06/17	
<b>Scale</b> As specified (A3)		<b>Drawing No</b> 595762-3 <b>Rev</b> B	