

5.8 Landscaping
Soft Landscape Strategy: Planting

9.1

Planting Characters

- Woodland Understorey character
- Ornamental Planting reflecting native meadow character
- Ornamental Planting of evergreen shrubs and perennials reflecting a gardenesque character
- Clipped evergreen hedge (Taxus baccata - Yew)
- Grass Lawn
- Biodiverse / Brown Roof
- Sedum Green Roof
- Climbers, shade tolerant combination of evergreen and deciduous species

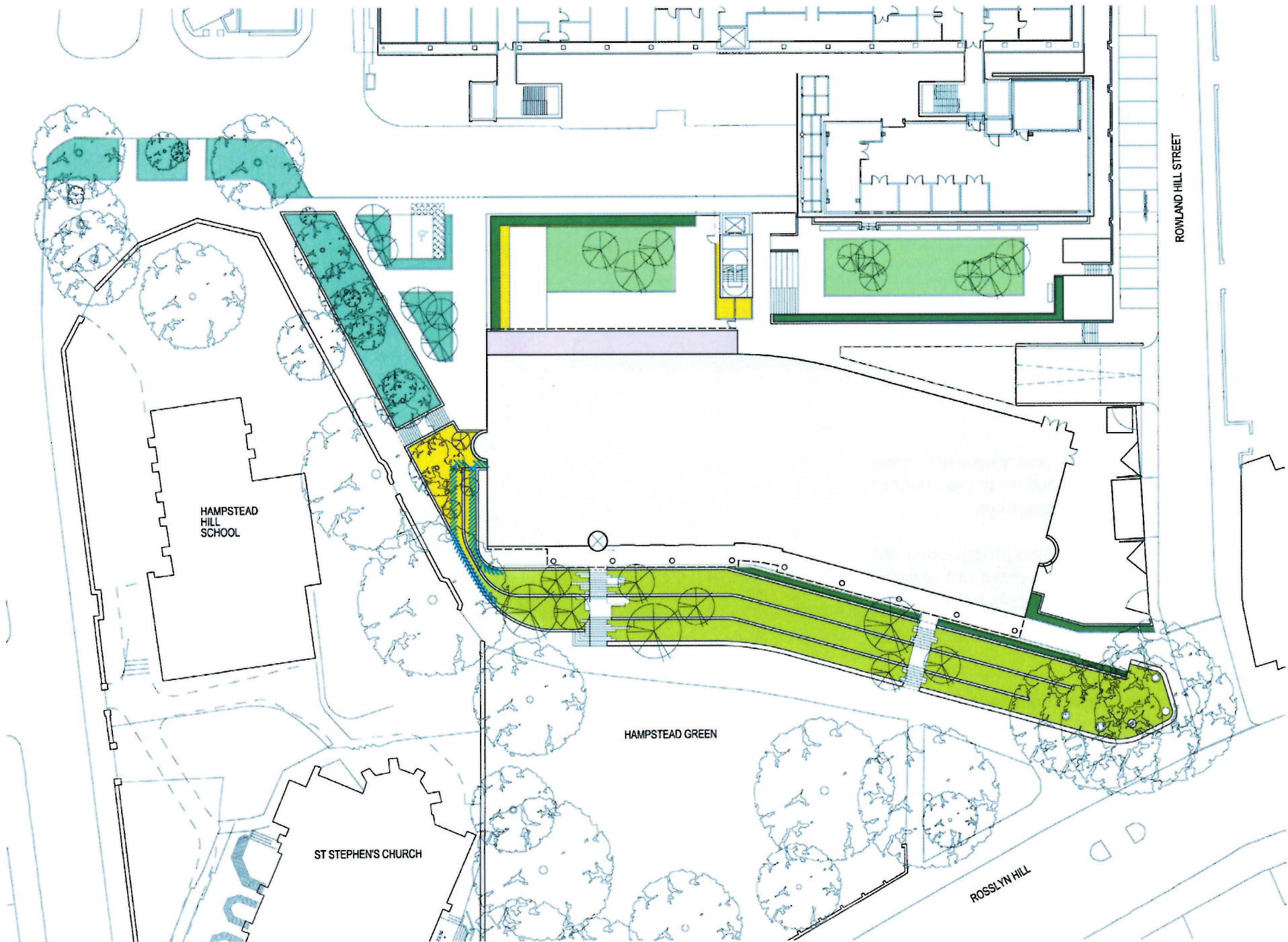
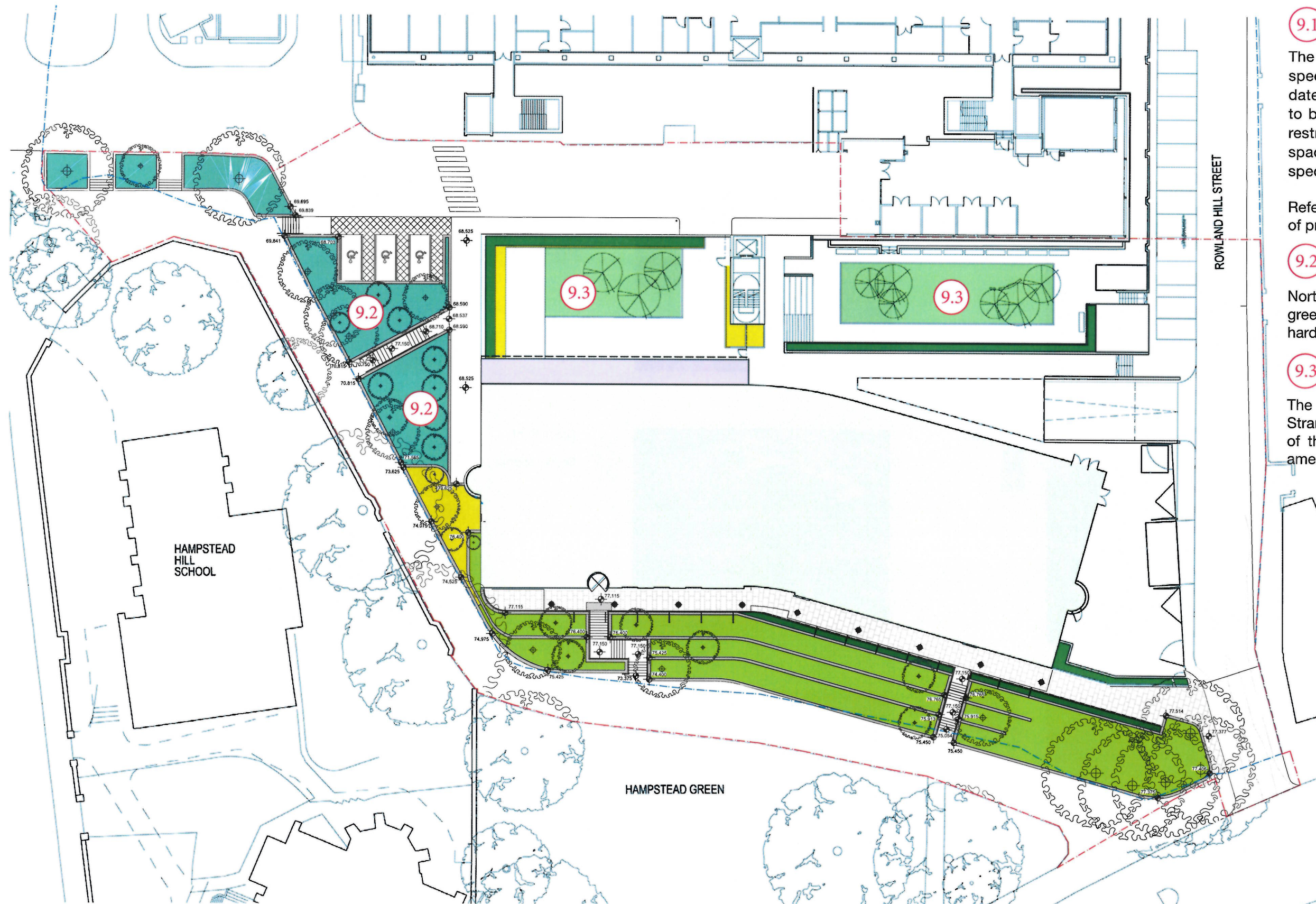


Fig 20: Extract of Section 5.8 of the originally submitted Design and Access Statement - Soft Landscape Strategy: Planting



9.1

The detailed proposals for planting species to be submitted at a later date. Consented scheme concept to be followed, unless dimensional restrictions of available green space require changes to proposed species.

Refer to key on next page for overview of proposed species.

9.2

North-Courtyard revised with 'soft green landscaping' increased and hard surfaces reduced.

9.3

The UCL Garden and the Heath Strange Garden spaces to the east of the building are not part of this amendment.

Fig 21: Proposed Amendment - Soft Landscape Strategy: Planting

09 Soft Landscape Strategy: Planting

50

Hopkins Architects

A_RFMR_9253_C - Planning, Design and Access Statement

Pears Building

5.8 Landscaping

Soft Landscape Strategy: Planting continued



Fig 22: Extract of Section 5.8 of the originally submitted Design and Access Statement - Soft Landscape Strategy: Planting

10 Soft Landscape Strategy: Trees

5.8 Landscaping
Soft Landscape Strategy: Trees

10.1

- Terraces
 - Quercus palustris (Pin Oak)
35-40cm girth semi mature
2.5m clear stem
 - Amalanchier lamarckii (June Berry)
20-25cm semi mature
2m clear stem
- Birch Copse in North Courtyard
 - Betula utilis 'Jacquemontii' (Himalayan Birch)
25-30cm girth semi mature
multi stem
 - Betula pendula (Silver Birch)
30-35cm girth semi mature
2.5m clear stem
- Ornamental Garden Trees
 - Prunus 'Accolade'
20-25cm semi mature
2m clear stem
 - Cornus kousa (Dogwood)
130L pot, 3m height
 - Acer palmatum 'Atropurpureum' (Japanese Maple)
10-12cm RB

10.3

- Memorial Trees
 - These replace the four existing trees, like for like in Heath Strange Garden. They are:
 - Liquidambar styraciflua (Sweet Gum)
30-35cm girth semi mature, 2m clear stem
 - Prunus avium (Wild Cherry)
30-35cm girth semi mature, 2m clear stem
 - Sorbus aucuparia (Rowan)
30-35cm girth semi mature, 2m clear stem
 - Morus nigra (Black Mulberry)
30-35cm girth semi mature, 2m clear stem

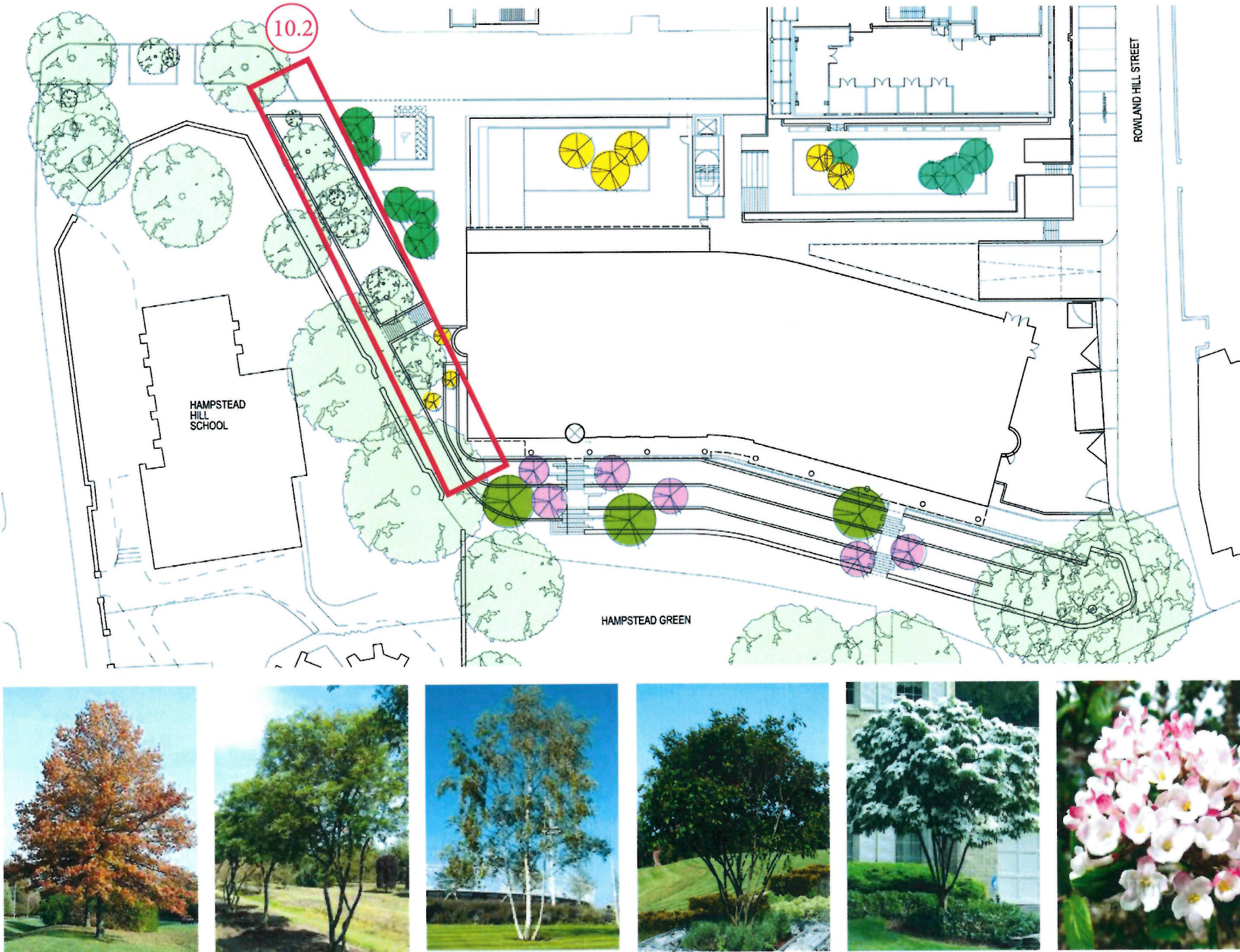


Fig 23 Extract of Section 5.8 of the originally submitted Design and Access Statement - Soft Landscape Strategy: Trees