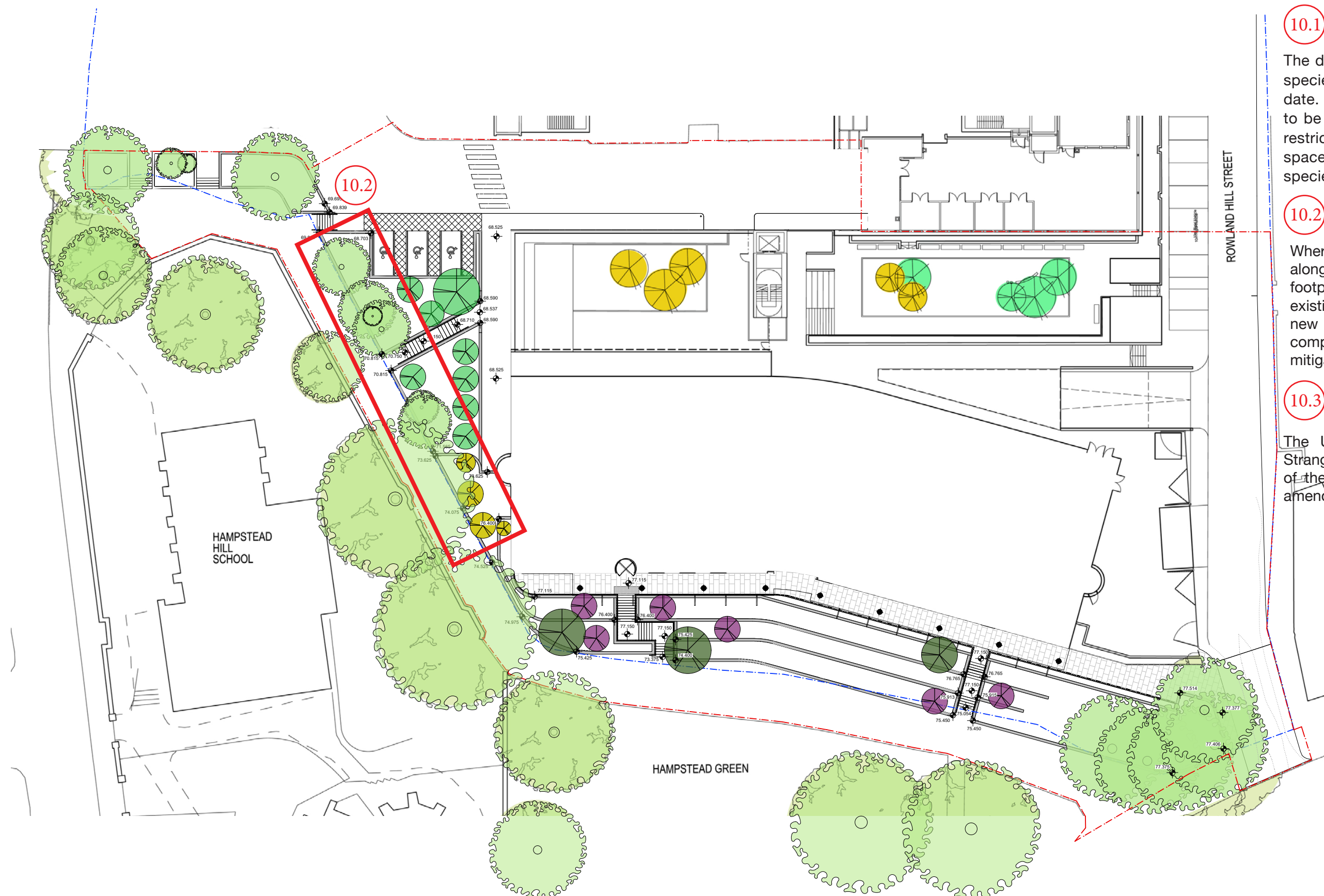


10 Soft Landscape Strategy: Trees: Amendment Response



10.1

The detailed proposals for planting species to be submitted at a later date. Consented scheme concept to be followed, unless dimensional restrictions of available green space require changes to proposed species.

10.2

Where possible the existing trees along School boundary and public footpath will be retained. Where existing trees require removal, new trees will be planted upon completion of the building works to mitigate the loss.

10.3

The UCL Garden and the Heath Strange Garden spaces to the east of the building are not part of this amendment.

Fig 24 Proposed Amendment Soft Landscape Strategy: Trees

11 Soft Landscape Strategy: Trees Retained and Removed

5.8 Landscaping
Soft Landscape Strategy: Trees Retained and Removed



Fig 25 Extract of Section 5.8 of the originally submitted Design and Access Statement - Landscape Strategy: Trees Retained and Removed

11 Soft Landscape Strategy: Trees Retained and Removed: Amendment Response



Where possible the existing trees along School boundary and public footpath will be retained. Where existing trees require removal, new trees will be planted upon completion of the building works to mitigate the loss.

The amended Tree Strategy shows the following:

1. Removal of Tree 15 (part of group G3) due to the height of the retaining wall. The tree is a category B (moderate quality and value). The loss of this tree will be mitigated via the planting of new trees in the area previously occupied by the North Courtyard.
2. Removal of one further tree part of group G3 due to the altered stair location to line up with the entrance to the Charity Offices. The G3 group of trees is a category B2 with some of the trees categorised as C (Low quality and value). The loss of this tree will be mitigated via the planting of new trees in the area previously occupied by the North Courtyard.
3. Removal of the small bush adjacent to Tree 20 due to the altered location of the stair to align with the car parking spaces. It is not deemed that this removal will cause an adverse effect on the existing setting.

It should be noted that while, the proposed amendment requires some further removal of existing trees, it has been ensured that new trees are identified in the scheme as a way of mitigating this loss. In addition, the North Courtyard hard paving has been replaced by soft green landscaping to further promote the greenery onto the new site.

The consented scheme already provides an increased number of trees along the North and the West frontages of the building when compared with the existing conditions. The proposed amendment does not take away from this concept as any trees proposed for removal have been allocated a replacement as an addition to the new trees already proposed.

Fig 26 Proposed Amendment - Landscape Strategy: Trees Retained and Removed