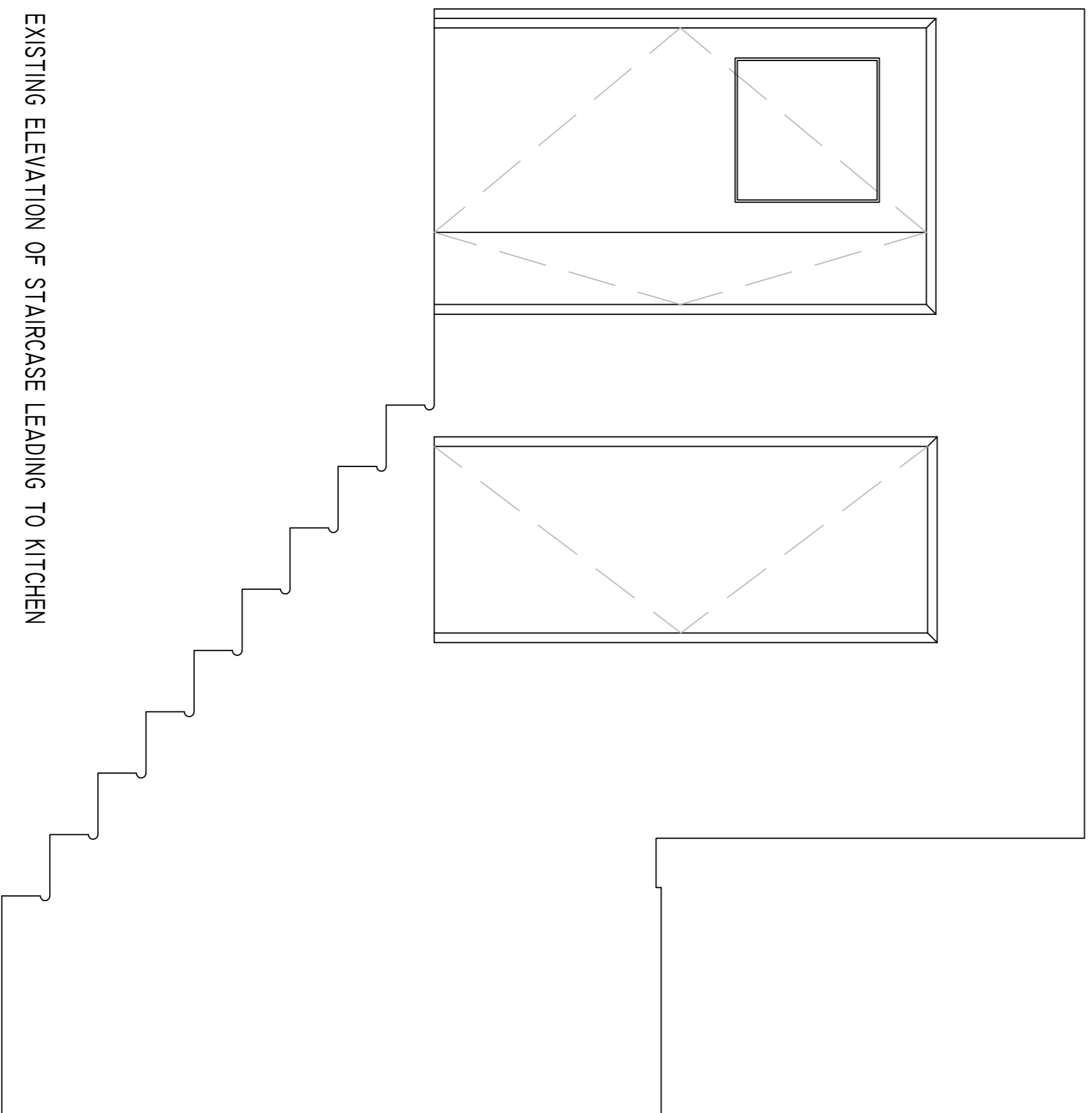
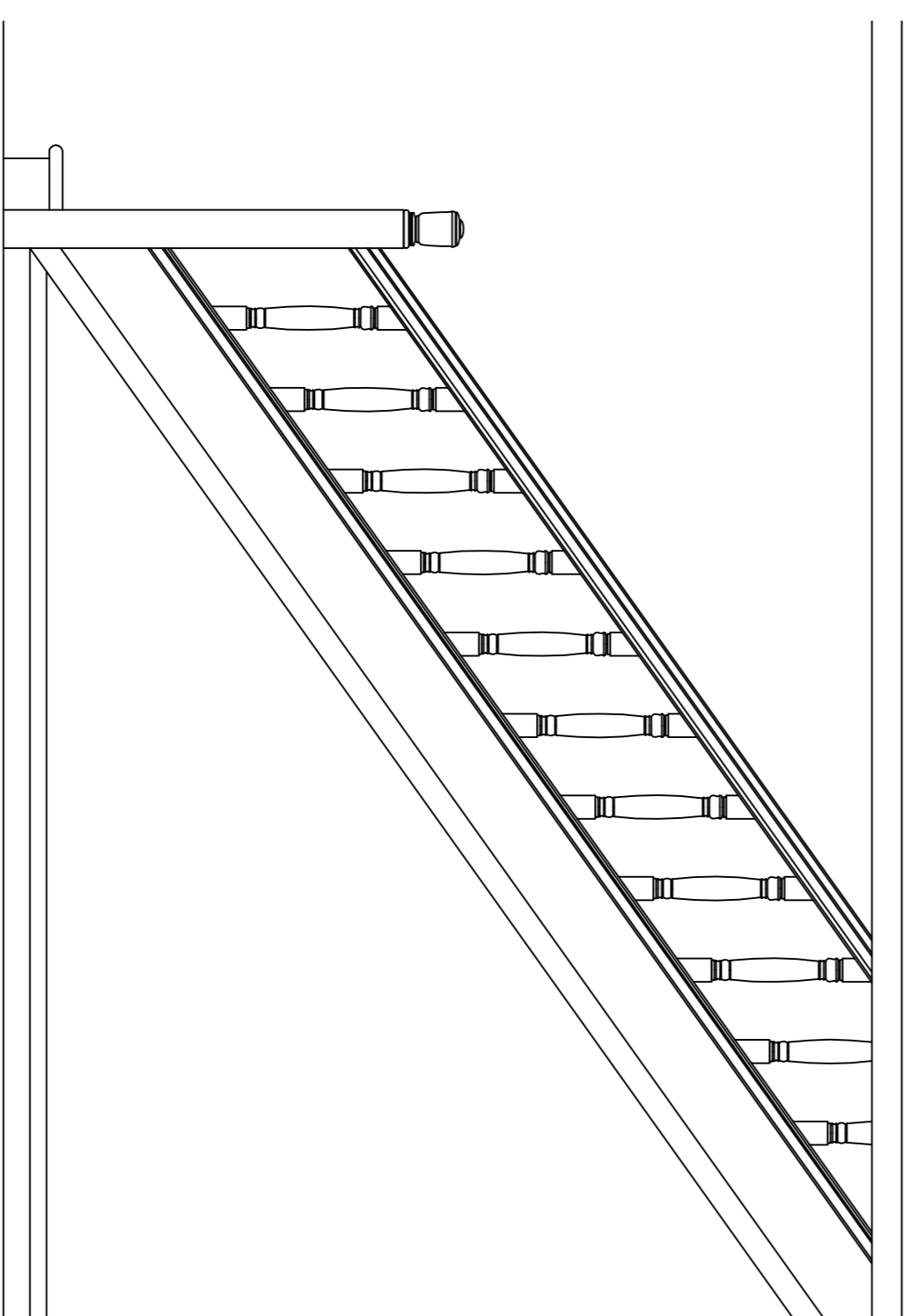


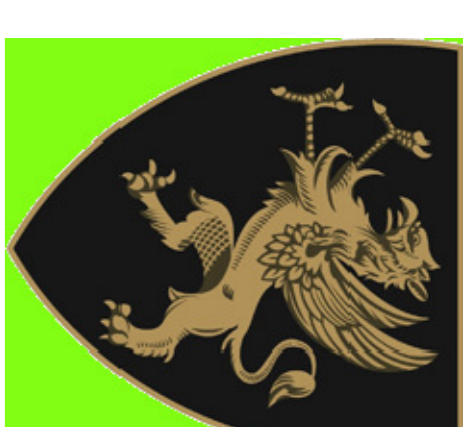
PARTIAL EXISTING PLAN



EXISTING ELEVATION OF STAIRCASE LEADING TO KITCHEN



EXISTING ELEVATION OF STAIRCASE LEADING TO DINING HALL



The Honourable  
Society of Gray's Inn  
8 South Square,  
London,  
WC1R 5ET  
Telephone:  
020 7458 7800

|   |             |            |
|---|-------------|------------|
| A | Final Issue | 23/06/2017 |
|---|-------------|------------|

|          |                         |               |
|----------|-------------------------|---------------|
| Revision | INN/1064/PL/06/17/003/A | File No. 1064 |
|----------|-------------------------|---------------|

**Notes**

Do not scale this drawing, use figured dimensions only.  
Mark Snook Planning accepts no responsibility for any errors made by others in scaling from this drawing.  
Copyright © Mark Snook Planning 2017.  
This drawing is Copyright and must not be reproduced, lent, or otherwise disclosed to any third party without the written consent of the owners of the Copyright.

**Mark Snook Planning**  
*Town Planning Consultants.*



The Pike House,  
Kingshill Road,  
Dursley, Glos.  
GL11 4BU  
Telephone:  
01453 549336  
Email:  
marksnookplanning@hotmail.com

**Title:-**

Works to doorway at 8 South Square, The Honourable Society of Gray's Inn, London, WC1R 5ET

**Client:-**

The Honourable Society of Gray's Inn

**Drawing:-**

New door to understairs cupboard - Existing plan & elevations

|               |                |                |
|---------------|----------------|----------------|
| <b>Date:-</b> | <b>Scale:-</b> | <b>Drawn:-</b> |
| 23/06/2017    | 1:100 @ A1     | MS             |