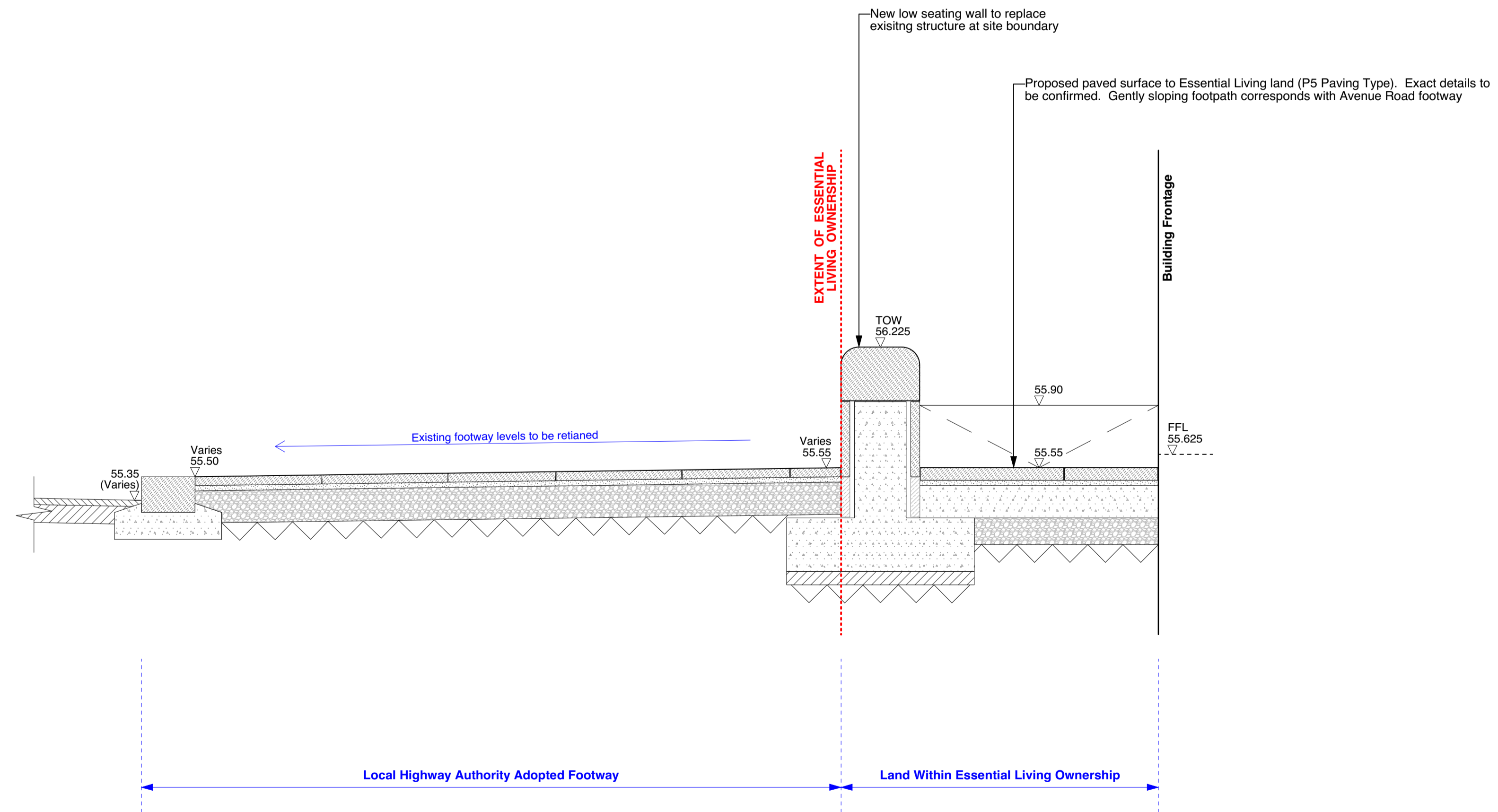


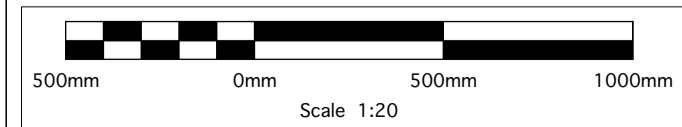


Existing ground levels to Avenue Road
Adopted Footway to be retained

Proposed ground levels within development
boundary to correspond with Adopted Footway



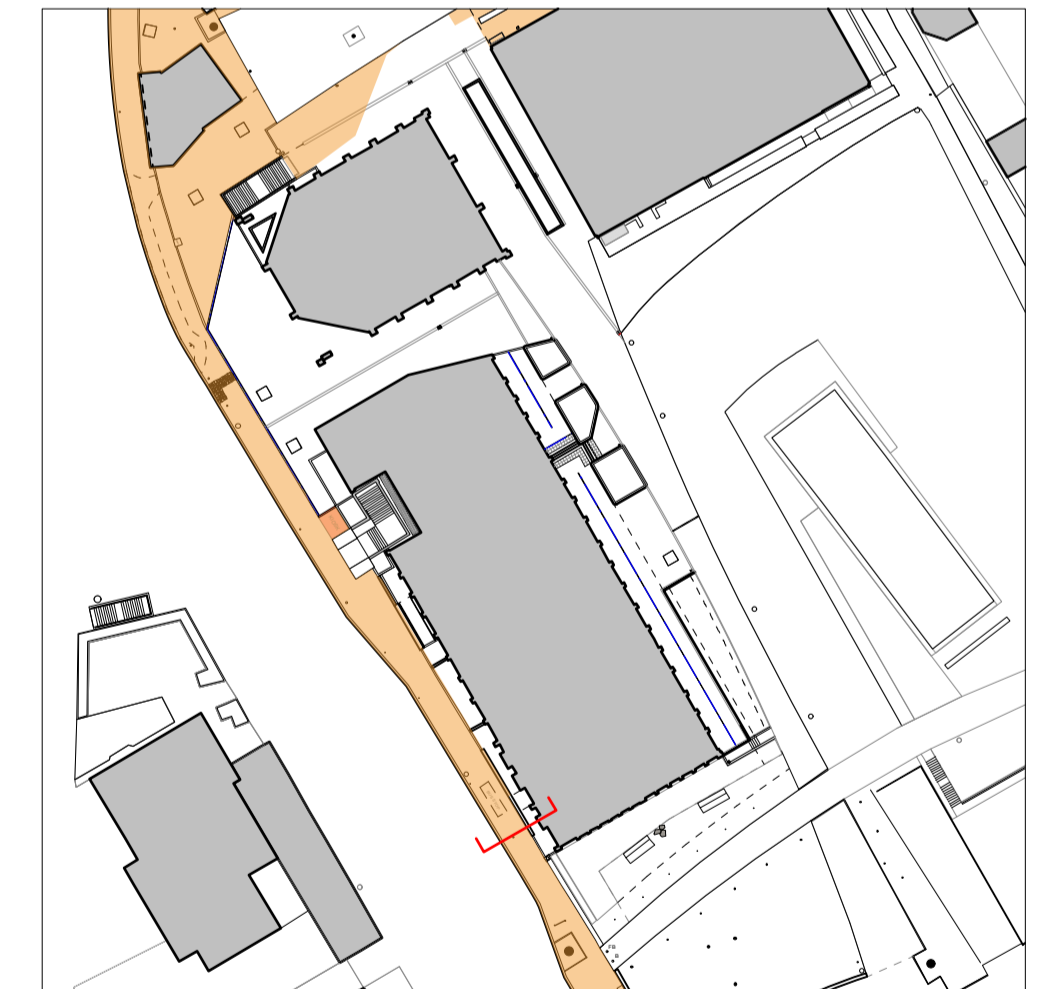
Section Through Proposed Interface With Avenue Road Footway
Scale: 1:20 at A1



Camlins Ref: LONDON-GENERAL-LL43 SWISS COTTAGE Camlins Work Drawings LL43-150 PLANNING CONDITION DISCHARGE

- NOTES**
1. All dimensions in millimetres unless otherwise shown.
 2. All levels in metres above Ordnance Datum (m AOD) unless reported to Employer before pricing / work starts.
 3. All dimensions to be checked on site and any discrepancies reported to Employer before pricing / work starts.
 4. Any ambiguities or discrepancies within this drawing and any other information given elsewhere must be reported to Camlins and the Employer for clarification before pricing work proceeds.
 5. All drawings to be read in conjunction with other Camlins drawings and specification information as appropriate.
 6. Refer to relevant Engineer's and Architect's information as appropriate for confirmation of all engineering and architectural details.
 7. All works to be carried out in accordance with the latest British Standards and appropriate codes of practice as a minimum.

LOCAL HIGHWAY AUTHORITY APPROVAL
Exact details of reinstatement to Avenue Road Adopted Highway Footway where affected by the works to be agreed with Local Highway Authority and Transport For London.



Rev.	Date	Description	Revised by	Checked by

Camlins
New Dolanog House, Severn Road,
Welshpool, Powys, SY21 7AR
01938 554896
www.camlins.com

100 Avenue Road, London
Essential Living

Section A - Condition 4 Levels At Highway Boundary

Status Planning	Drawn by JS	Checked by DWJ
Drawing Number LL443-150-0023	Revision -	Scale 1:20@A1
	Date 21.07.2017	