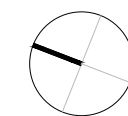


Notes:

1. Consented Cleveland Street secondary entrance doors. Colour: Dark grey, RAL: 7043 (Ref: 2016/7076/P).
2. Consented metal framed glazed facade. Colour: Dark grey, RAL: 7043 (Ref: 2016/7076/P).
3. Consented Cleveland Street main entrance. Metal framed glazed swing doors. Colour: Dark grey, Ral: 7043 (Ref: 2016/7076/P).
4. Consented canopy with integrated lighting above (Ref: 2016/7076/P).
5. Consented Tottenham Street entrance doors. Colour: Dark grey, RAL: 7043 (Ref: 2016/7076/P).
6. Consented metal grille above pavement vaults (Ref: 2016/7076/P).
7. Consented glass pavement light (Ref: 2016/7076/P).
8. Existing glass block pavement lights cleaned and repaired.
9. Consented metal balustrade. Colour: Dark grey, RAL: 7043 (Ref: 2016/7076/P).
10. Existing metal framed glazed doors. Consented framing spray painted. Colour: Dark grey, RAL: 7043 (Ref: 2016/7076/P).
11. Existing metal framed window. Consented framing spray painted. Colour: Dark grey, RAL: 7043 (Ref: 2016/7076/P).
12. Consented existing concrete upstands painted. Colour: Dark grey, RAL: 7043 (Ref: 2016/7076/P).
13. 1100 litre Eurobin for recycling refuse.
14. 1100 litre Eurobin for waste refuse.

Layout as per prior approval for building extension and refurbishment works. Application Ref: 2016/7076/P.



**For Planning**

Rev.	Description.	By	Date
P1	Issued for Planning. ----	TM	21.07.17

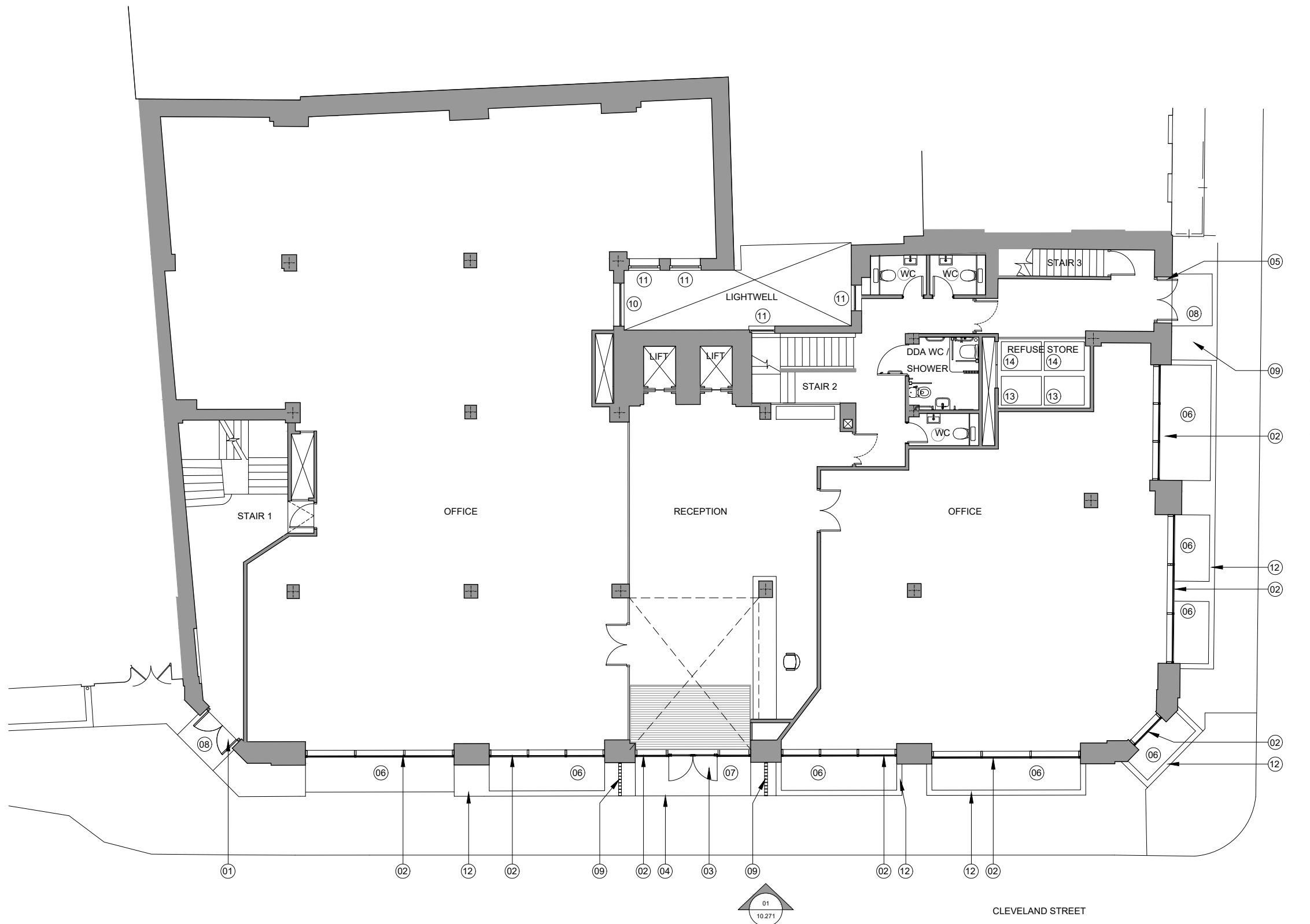
Client  
**BC Noho Limited**

Project  
**30 Cleveland Street**

Title  
**Existing Ground Floor Plan**

Project No.	Drawing No.	Rev.
<b>1621.1</b>	<b>10.201</b>	<b>P1</b>
<b>Scale</b>	1:75 @ A1	1:150 @ A3
<b>Drawn</b>	<b>Checked</b>	<b>Date</b>
TM	TL	07.07.17

Do not scale from this drawing. The Contractor is to take and check all dimensions on site before work commences. Discrepancies must be reported to the Architect. Subcontractors must verify all dimensions on site before making a shop drawing or commencing manufacturing. This drawing is copyright. ©



01 Existing Ground Floor Plan  
Scale 1:150 @ A3

Notes:

1. Consented Cleveland Street secondary entrance doors. Colour: Dark grey, RAL: 7043 (Ref: 2016/7076/P).
2. Consented metal framed glazed facade. Colour: Dark grey, RAL: 7043 (Ref: 2016/7076/P).
3. Consented Cleveland Street main entrance. Metal framed glazed swing doors. Colour: Dark grey, RAL: 7043 (Ref: 2016/7076/P).
4. Consented canopy with integrated lighting (Ref: 2016/7076/P).
5. Consented metal balustrade. Colour: Dark grey, RAL: 7043 (Ref: 2016/7076/P).
6. Existing metal framed window. Consented spray paint finish to framing. Colour: Dark grey, RAL: 7043 (Ref: 2016/7076/P).
7. Consented roof parapet with PPC metal capping. Colour: Light grey, RAL: 9006 (Ref: 2016/7076/P).
8. Existing louvered grille. Consented spray paint finish to match door (Ref: 2016/7076/P).
9. Consented PPC metal clad overhanging roof. Colour: Light grey, RAL: 9006 (Ref: 2016/7076/P).
10. Consented repair and redecoration to existing white render (Ref: 2016/7076/P).
11. -
12. Consented redecoration to existing brick plinth. Colour: White (Ref: 2016/7076/P).
13. Lighting shown indicatively. Uplight to 'eyebrow' detail (Ref: 2016/7076/P).
14. -
15. Consented ductwork wrapped with matt vinyl. Colour: Light grey, RAL: 9006 to match roof finish (Ref: 2016/7076/P).
16. Signage shown indicatively. Individually fixed PPC metal letters. Colour: Dark grey, RAL: 7043 (Ref: 2016/7076/P).
17. Consented s/s access control (Ref: 2016/7076/P).
18. Existing No. 52 Tottenham Street brick chimney.
19. Consented redecoration of existing concrete upstands. Colour: Dark grey, RAL: 7043 (Ref: 2016/7076/P).
20. Consented repairs and redecoration to existing 'eyebrow' canopy. Colour: White (Ref: 2016/7076/P).
21. Consented repairs and redecoration to rendered parapet and coping stone cleaned (Ref: 2016/7076/P).

Layout as per prior approval for building extension and refurbishment works. Application Ref: 2016/7076/P.



## For Planning

Rev.	Description	By	Date
P1	Issued for Planning. ----	TM	21.07.17

Client  
**BC Noho Limited**

Project  
**30 Cleveland Street**

Title  
**Existing Cleveland Street Elevation**

Project No.	Drawing No.	Rev.	
<b>1621.1</b>	<b>10.271</b>	<b>P1</b>	
Scale	Drawn	Checked	Date
1:75 @ A1	TM	TL	10.07.17

Do not scale from this drawing. The Contractor is to take and check all dimensions on site before work commences. Discrepancies must be reported to the Architect. Subcontractors must verify all dimensions on site before making a shop drawing or commencing manufacturing. This drawing is copyright. ©

© Copyright Barr Gazetas Ltd.  
19 Heddon Street, London. W1B 4BG  
Phone: 020 7636 5581  
www.barrgazetas.com



01 Existing Cleveland Street Elevation  
Scale 1:150 @ A3



**Notes:**

1. Consented metal framed glazed facade. Colour: Dark grey, RAL: 7043 (Ref: 2016/7076/P).
2. Existing metal framed window. Consented spray paint finish to existing framing . Colour: Dark grey, RAL: 7043 (Ref: 2016/7076/P).
3. Consented PPC Solid sandwich panel. Colour: Dark grey, RAL: 7043 (Ref: 2016/7076/P).
4. Consented metal framed glazed swing doors. Colour: Dark grey, RAL: 7043 (Ref: 2016/7076/P).
5. Consented metal framed glazed bi-folding sliding doors. Colour: Dark grey, RAL: 7043 (Ref: 2016/7076/P).
6. Consented Tottenham Street secondary entrance doors. Spray painted. Colour: Dark grey, RAL: 7043 (Ref: 2016/7076/P).
7. Consented redecoration to existing concrete upstand. Colour: Dark grey, RAL: 7043 (Ref: 2016/7076/P).
8. Consented repair and redecoration to existing white rendering. Color: White (Ref: 2016/7076/P).
9. Consented redecoration to existing brick plinth redecored. Colour: White (Ref: 2016/7076/P).
10. -
11. Consented metal balustrade. Colour: Dark grey, RAL: 7043 (Ref: 2016/7076/P).
12. -
13. Consented PPC metal clad overhanging roof. Colour: Light grey, RAL: 9006 (Ref: 2016/7076/P).
14. Consented roof parapet with PPC metal capping. Colour: Light grey, RAL: 9006 (Ref: 2016/7076/P).
15. Consented ductwork wrapped with matt vinyl. Colour: Light grey, RAL: 9006 (Ref: 2016/7076/P).
16. Consented repair and redecoration to existing 'eyebrow' canopy repaired and redecored. Colour: White (Ref: 2016/7076/P).
17. Existing No. 52 Tottenham Street brick chimney.
18. Consented canopy with integrated lighting (Ref: 2016/7076/P).
19. Lighting shown indicatively. Uplight to 'eyebrow' detail (Ref: 2016/7076/P).

Layout as per prior approval for building extension and refurbishment works. Application Ref: 2016/7076/P.



**For Planning**

Rev.	Description.	By	Date
P1	Issued for Planning. ----	TM	21.07.17

Client  
**BC Noho Limited**

Project  
**30 Cleveland Street**

Title  
**Existing Tottenham Street Elevation**

Project No.	Drawing No.	Rev.
<b>1621.1</b>	<b>10.272</b>	<b>P1</b>
<b>Scale</b>	1:75 @ A1	1:150 @ A3
<b>Drawn</b>	<b>Checked</b>	<b>Date</b>
TM	TL	10.07.17

Do not scale from this drawing. The Contractor is to take and check all dimensions on site before work commences. Discrepancies must be reported to the Architect. Subcontractors must verify all dimensions on site before making a shop drawing or commencing manufacturing. This drawing is copyright. ©

01 Existing Tottenham Street Elevation  
10.272 Scale 1:150 @ A3