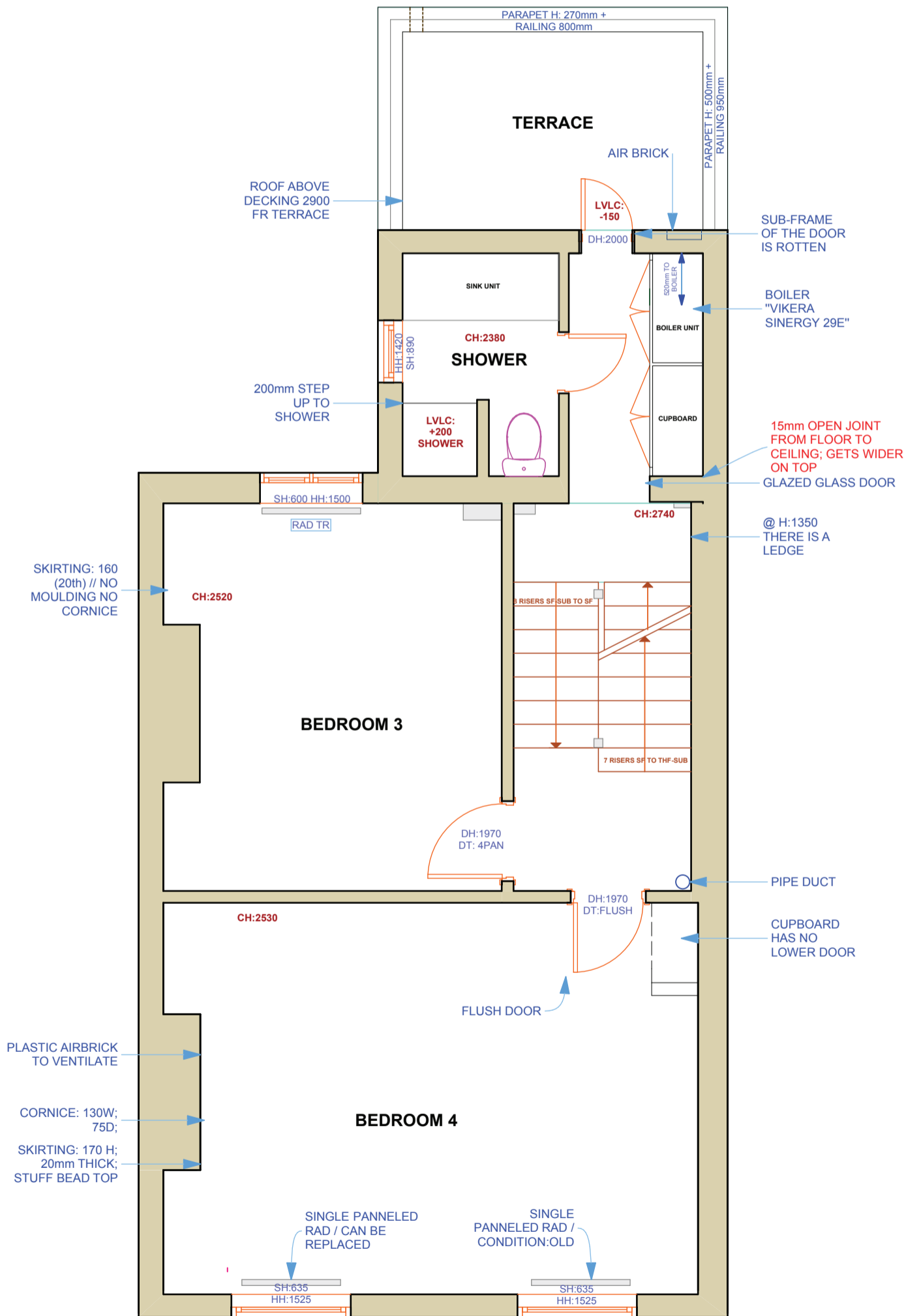


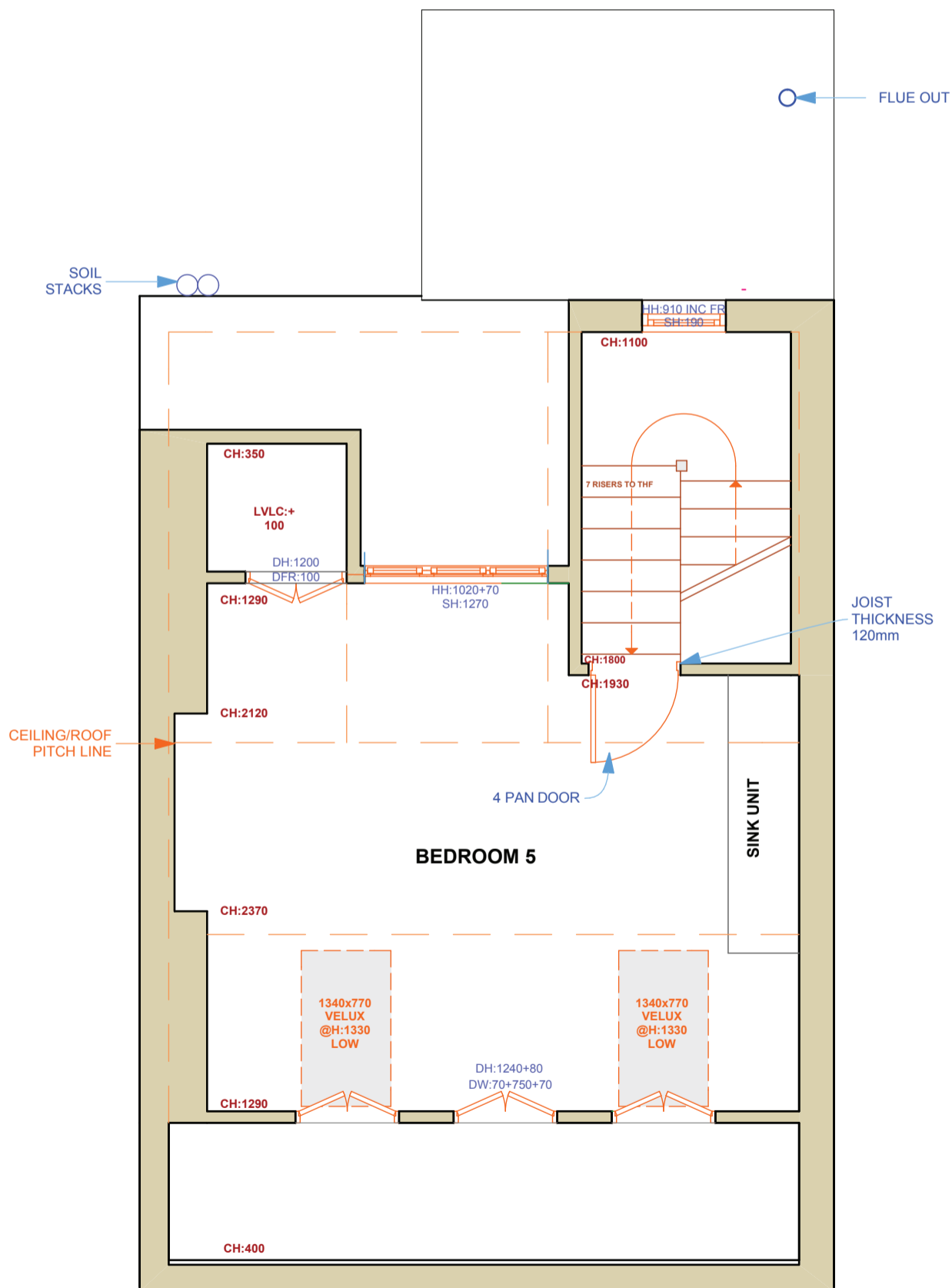
**MARIUS BARRAN ARCHITECTS** RIBA  
 1 St. Paul's Studios, 135 Talgarth Road London W14 9DA  
 0208 741 5275  
 Project: London NW3 2NL  
**Alterations to 36 Roderick Road**  
 Drawing: EXISTING PLAN | FIRST FLOOR

Scale: 1:50 drg. no. RR/EP-2  
 Date: April 2017 rev. 1



**MARIUS BARRAN ARCHITECTS** RIBA  
 1 St. Paul's Studios, 135 Talgarth Road London W14 9DA  
 0208 741 5275  
 Project: London NW3 2NL  
**Alterations to 36 Roderick Road**  
 Drawing: EXISTING PLAN | SECOND FLOOR

Scale: 1:50 drg. no. RR/EP-3  
 Date: April 2017 rev. 1



**MARIUS BARRAN ARCHITECTS** RIBA

1 St. Paul's Studios, 135 Talgarth Road London W14 9DA  
0208 741 5275

Project: London NW3 2NL

Alterations to 36 Roderick Road

Drawing: EXISTING PLAN | THIRD FLOOR

Scale: 1:50 drg. no. RR/EP-4  
Date: April 2017 rev. 1