

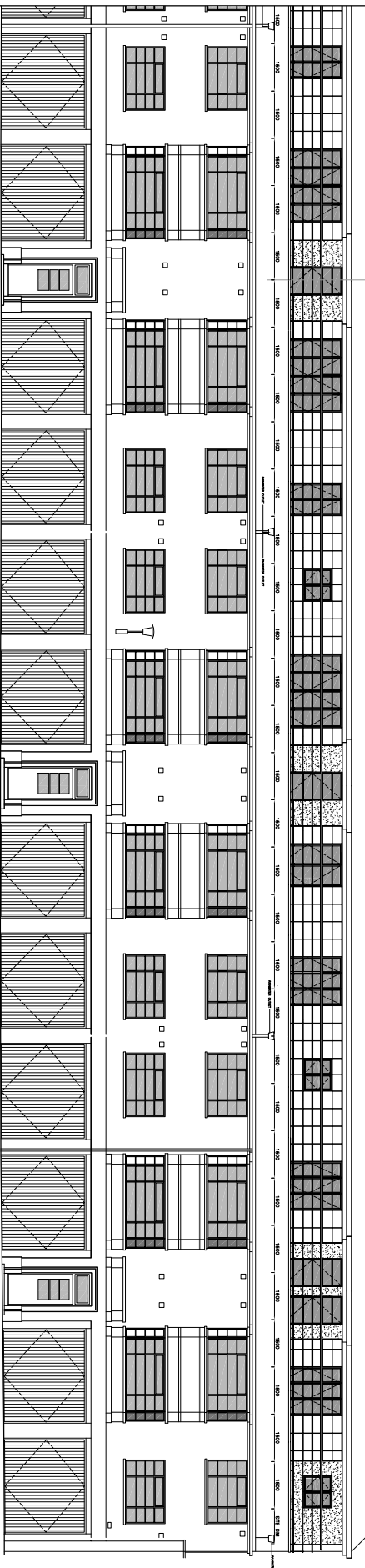
1 BEDROOM FLAT (FLAT No 7)
831VALP07 & 831VALE07

2 BEDROOM FLAT (FLAT No 6)
831VALP06 & 831VALE06

2 BEDROOM FLAT (FLAT No 5)
831VALP05 & 831VALE05

3 BEDROOM FLAT (FLAT No 4)
831VALP04 & 831VALE04

KEY REAR ELEVATION
EAST



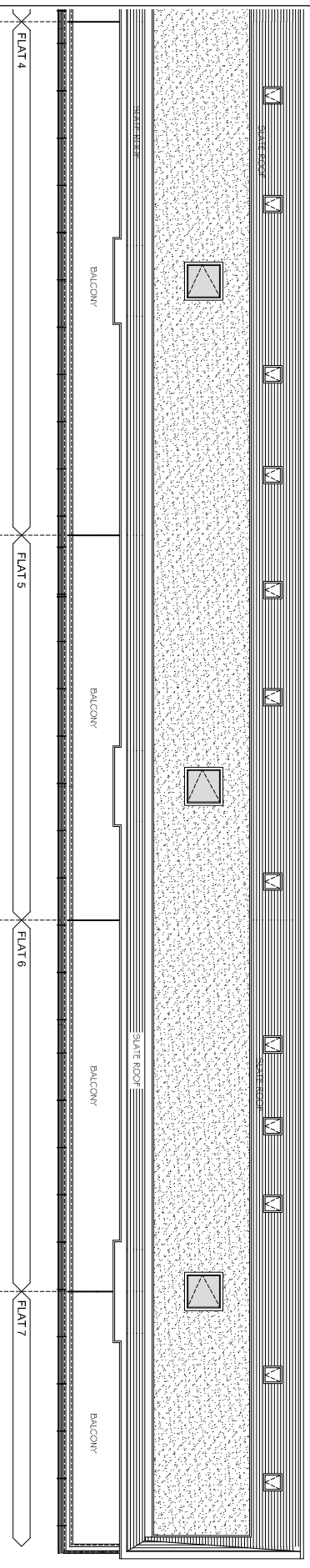
3 BEDROOM FLAT (FLAT No 4)
831VALP04 & 831VALE04

2 BEDROOM FLAT (FLAT No 5)
831VALP05 & 831VALE05

2 BEDROOM FLAT (FLAT No 6)
831VALP06 & 831VALE06

1 BEDROOM FLAT (FLAT No 7)
831VALP07 & 831VALE07

KEY FRONT ELEVATION
EAST



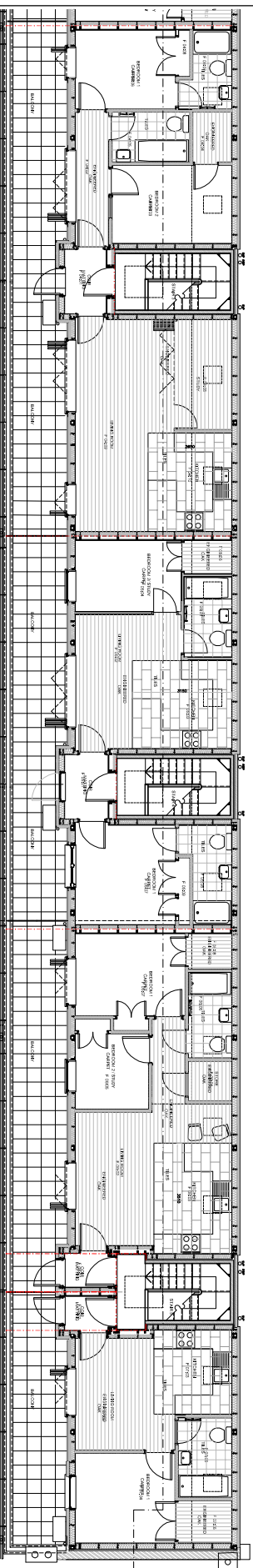
FLAT 4

FLAT 5

FLAT 6

FLAT 7

KEY ROOF PLAN
EAST



3 BEDROOM FLAT (FLAT No 4)
831VALP04 & 831VALE04

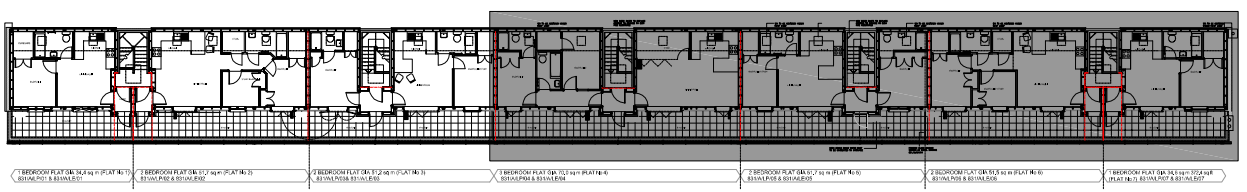
2 BEDROOM FLAT (FLAT No 5)
831VALP05 & 831VALE05

2 BEDROOM FLAT (FLAT No 6)
831VALP06 & 831VALE06

1 BEDROOM FLAT (FLAT No 7)
831VALP07 & 831VALE07

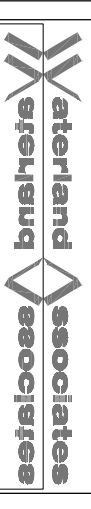
KEY THIRD FLOOR
PLAN EAST

NOTES:



KEY PLAN

STATUS - CONSTRUCTION



PROJECT: GOWER MEWS MANSIONS - WINDOWS
 PROPOSED - KEY PLANS EAST
 SCALE: 1:100 @A1
 DATE: JULY 17 / 2024
 DRAWING NO: 1030 A/LP/00 / KEY-2

WATERLAND HOUSE, WEST STREET, OUNDLE, PE8 4EJ,
 T: 01832 270123, F: 01832 270345, E: arch@waterland.co.uk
 ARCHITECTS WATERLAND ASSOCIATES
 W W W . W A T E R L A N D . C O . U K