

3 BEDROOM FLAT (FLAT No 4)
831/AL/P04 & 831/AL/E04

2 BEDROOM FLAT (FLAT No 3)
831/AL/P03& 831/AL/E03

2 BEDROOM FLAT (FLAT No 2)
831/AL/P02 & 831/AL/E02

1 BEDROOM FLAT (FLAT No 1)
831/AL/P01 & 831/AL/E01

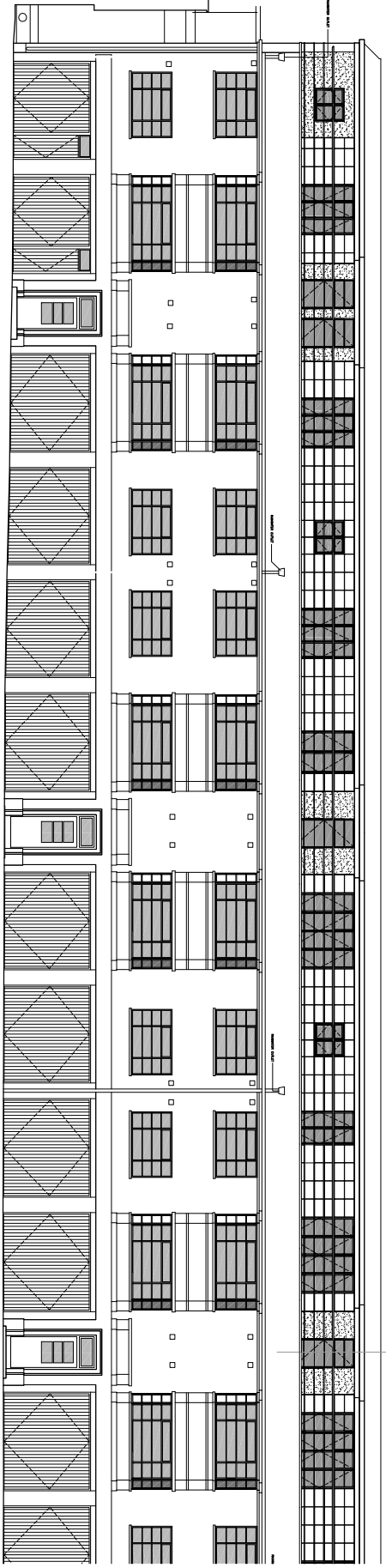
1 BEDROOM FLAT (FLAT No 1)
831/AL/P01 & 831/AL/E01

2 BEDROOM FLAT (FLAT No 2)
831/AL/P02 & 831/AL/E02

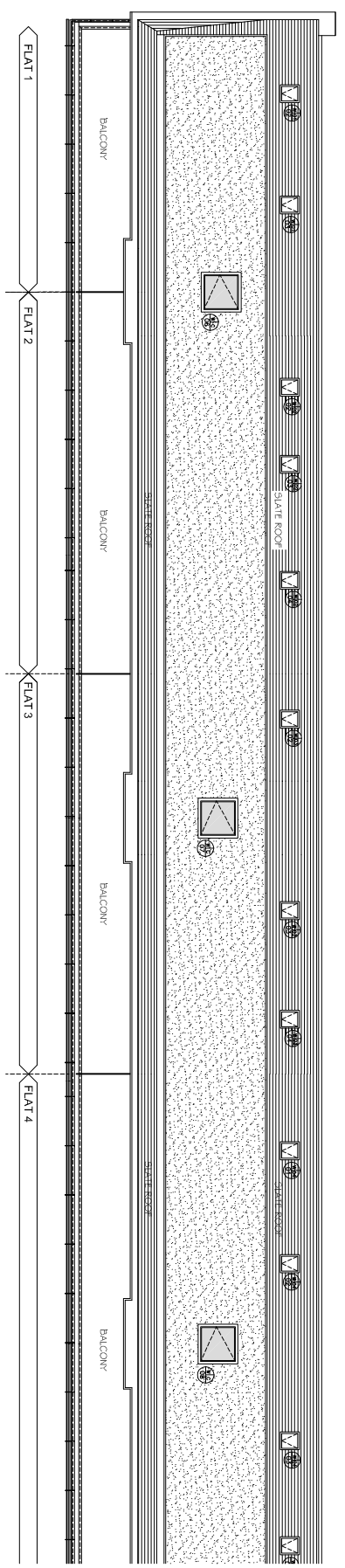
2 BEDROOM FLAT (FLAT No 3)
831/AL/P03& 831/AL/E03

3 BEDROOM FLAT (FLAT No 4)
831/AL/P04 & 831/AL/E04

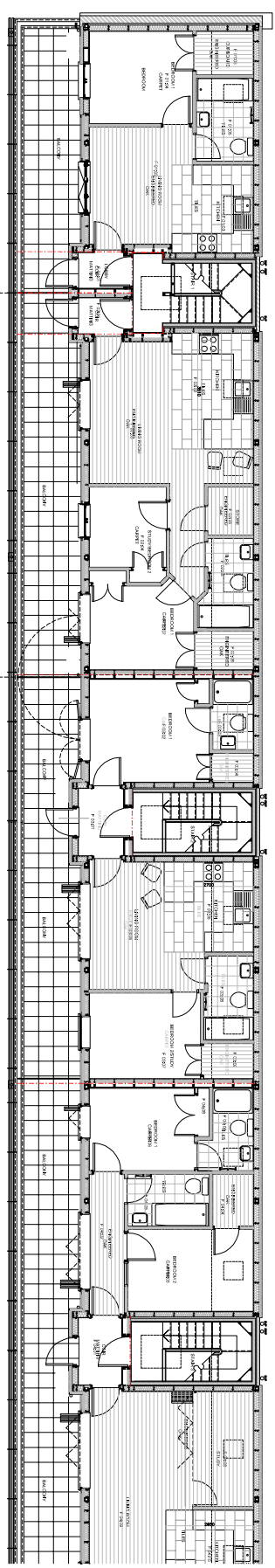
KEY REAR ELEVATION
WEST



KEY FRONT ELEVATION
WEST

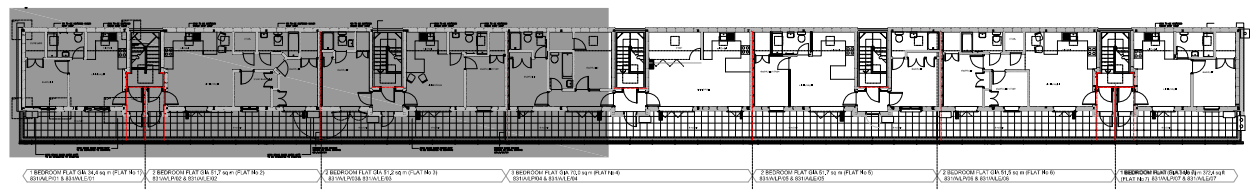


KEY ROOF PLAN
WEST



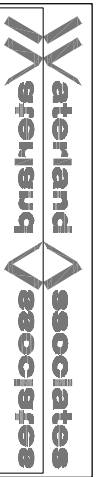
KEY FLOOR PLAN
WEST

NOTES:



KEY PLAN

STATUS - CONSTRUCTION



PROJECT: GOWER MEWS MANSIONS - WINDOWS
 DRAWING: PROPOSED - KEY PLANS WEST
 SCALE: 1:100 @A1
 DATE: JULY 17 17/18
 DRAWN BY: 1030 A/L P/00
 CHECKED BY: /KEY-1
 NOTE: DO NOT SCALE OFF THIS DRAWING. PLANNING PERMISSION HAS BEEN OBTAINED FROM THE LOCAL AUTHORITY. SEE ONLY DIMENSIONS SHOWN.
 NOTE: IF DRAWING PRINTED @ A3, SCALE TO BE: 1:200

WATERLAND HOUSE, WEST STREET, OUNDLE, PER8 4EJ,
 T-01832 270123, F-01832 270345, E-architect@waterland.co.uk
 ARCHITECTS W W W WATERLAND.CO.UK