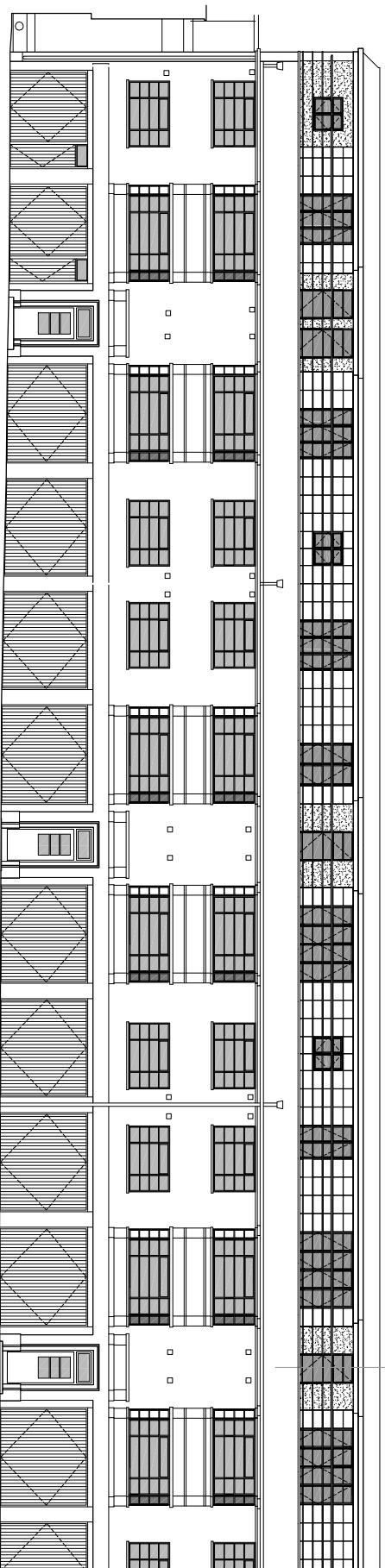
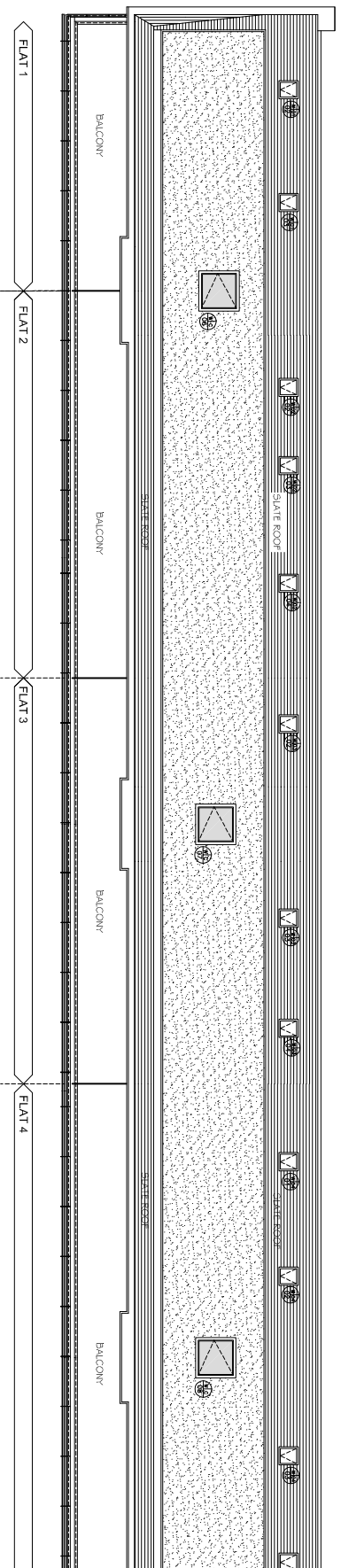


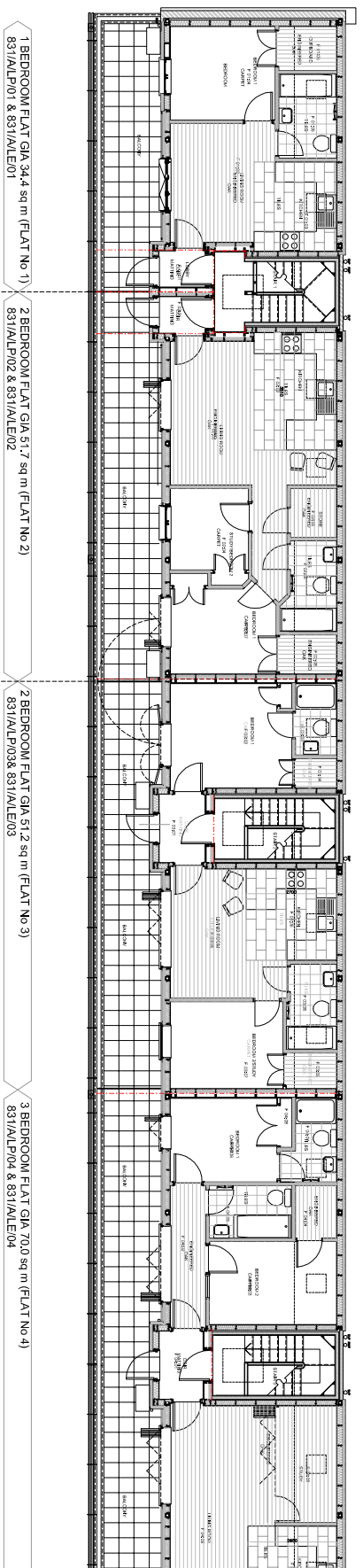
KEY REAR ELEVATION  
WEST



KEY FRONT ELEVATION  
WEST

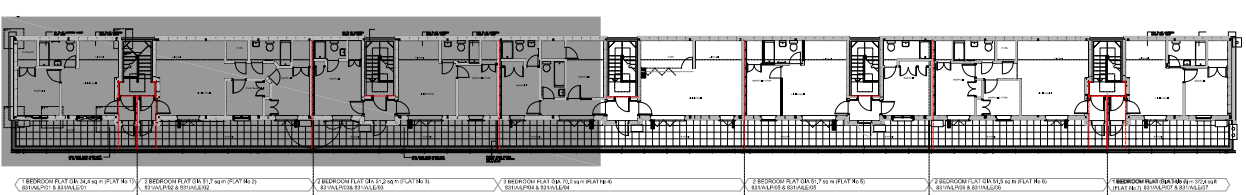


KEY ROOF PLAN  
WEST



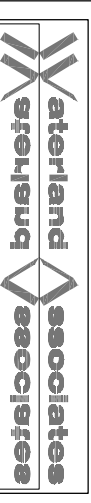
KEY FLOOR PLAN  
WEST

NOTES:



KEY PLAN

STATUS - CONSTRUCTION



PROJECT: GOWER MEWS MANSIONS - WINDOWS

SCALE: 1:100 @A1

DATE: JULY 17 2024

SCALE: X/L/P/00

NOTE: IF DRAWING PRINTED @ A3, SCALE TO BE: 1:200



WATERLAND HOUSE, WEST STREET, OUNDLE, PE8 4EJ,  
T-01832 270123, F-01832 270345, E-architect@waterland.co.uk  
ARCHITECTS W W W WATERLAND.CO.UK