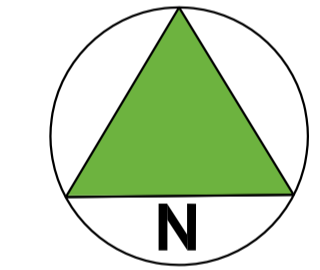
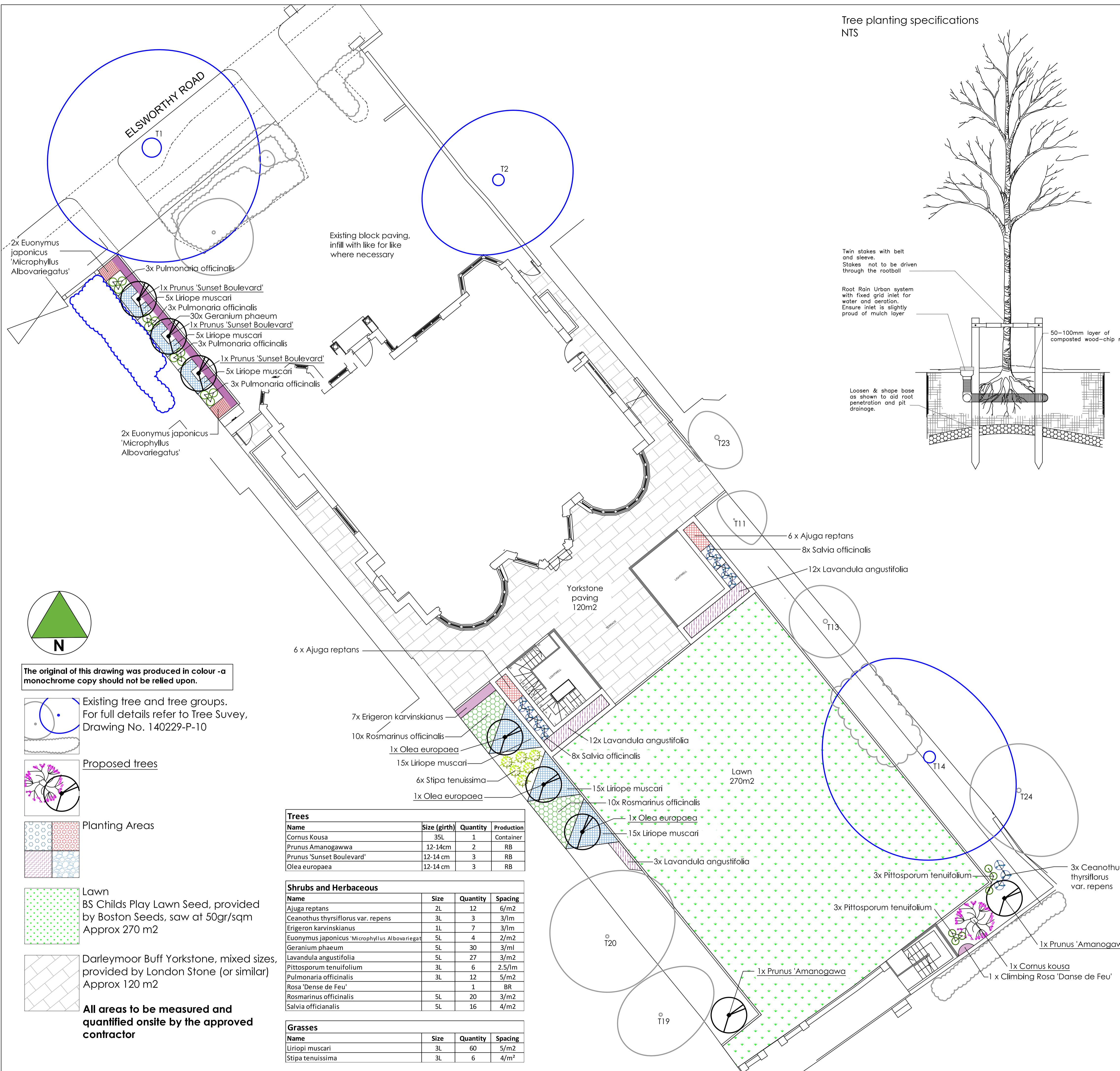
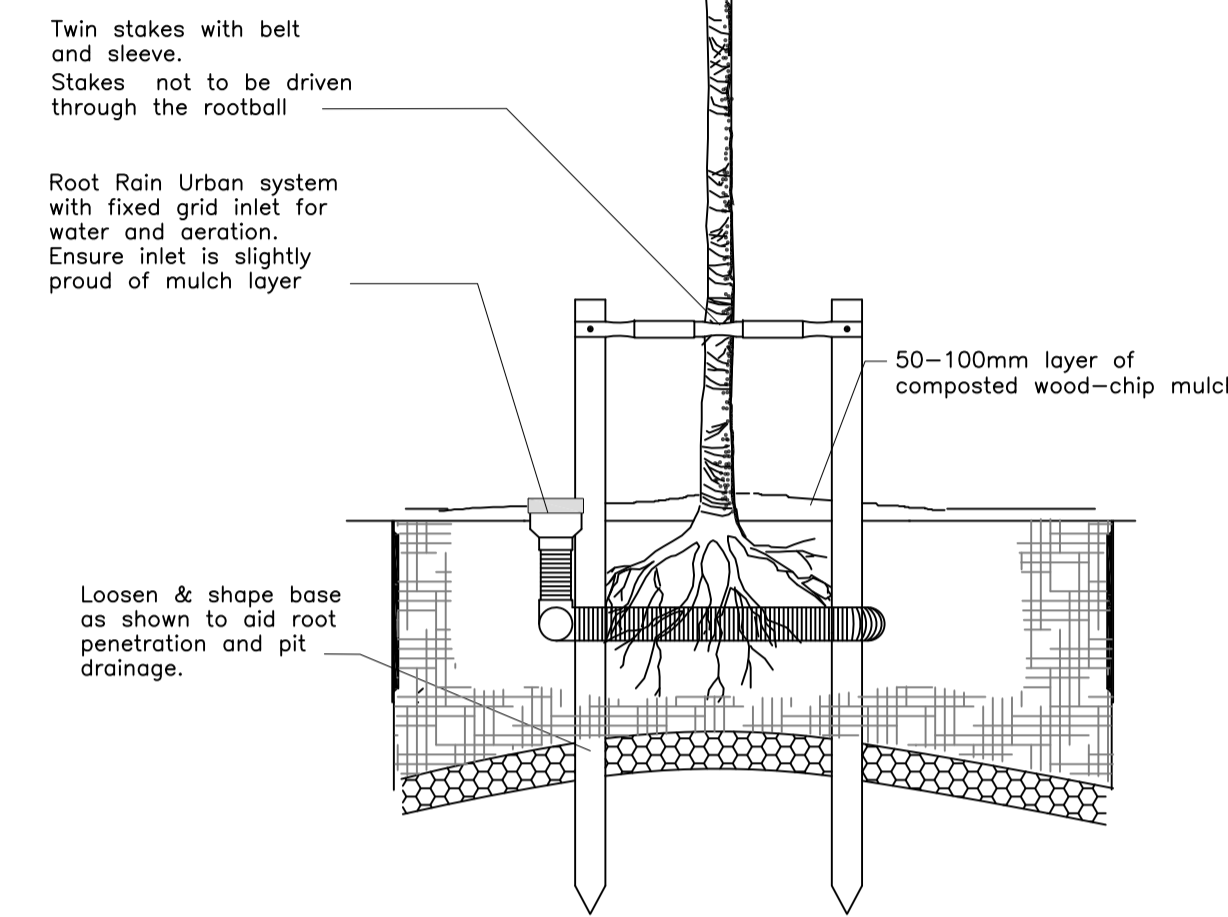


Tree planting specifications
NTS

Refer to:

- British Standard 4043: Recommendations for Transplanting root balled trees (1989)
- British Standard 3936: Nursery stock (various parts) (1992)
- HTA National Plant Specification
- British Standard 5837: Trees in relation to design, demolition and construction - Recommendations (2012)
- British Standard 8545: Trees: from nursery to independence in the landscape- Recommendations (2014)

- 1.1 Planting will be carried out in the next available planting season. This usually runs from October to March but is dependent on weather conditions. Container grown plants can be planted outside of this time providing adequate aftercare is available.
- 1.2 Excavations for tree pits will be square in shape and at least twice the diameter of the root spread and 1.5 times the depth of the roots of the stock to be planted.
- 1.3 The bottom and sides of the pit will be broken up to allow deep root penetration and so as not to create a sump effect in the hole.
- 1.4 Following pit excavation, the plants will be carefully placed into the hole with all roots spread out and any damaged roots pruned back to sound growth (if bare root). Container grown plants will be carefully removed from the pots and the roots gently teased out by hand to ensure no circling roots remain.
- 1.5 The plant will be placed into the pit ensuring roots of adjacent trees are retained during the process.
- 1.6 The plant will be carefully held upright in the middle of the pit whilst the excavated soil is put back over the roots in thin layers.
- 1.7 The plant will be shaken gently up and down, so that when backfilling the soil gets between and around the roots. The soil will be firmed down.
- 1.8 The plant will be planted ensuring that the nursery mark on the stem is level with the final level of the backfilled soil.
- 1.9 The final backfill layer will sit slightly proud of the existing surrounding soil levels.
- 1.10 All trees planted will be staked using the method shown on the landscape master plan.
- 1.11 Following planting trees will be watered thoroughly (approximately 20litres per tree). Half should be applied via the irrigation tube and the remaining half should be over the surface of the pit area.
- 1.12 Following thorough watering, an area with a minimum radius of 500mm from the stem of the tree will be covered with 75mm of composted wood chip mulch.



The original of this drawing was produced in colour - a monochrome copy should not be relied upon.

Existing tree and tree groups. For full details refer to Tree Survey, Drawing No. 140229-P-10

Proposed trees

Planting Areas

Lawn
BS Childs Play Lawn Seed, provided by Boston Seeds, saw at 50gr/sqm
Approx 270 m2

Darley Moor Buff Yorkstone, mixed sizes, provided by London Stone (or similar)
Approx 120 m2

All areas to be measured and quantified onsite by the approved contractor

Trees			
Name	Size (girth)	Quantity	Production
Cornus Kousa	35L	1	Container
Prunus Amanogawwa	12-14cm	2	RB
Prunus 'Sunset Boulevard'	12-14 cm	3	RB
Olea europaea	12-14 cm	3	RB

Shrubs and Herbaceous			
Name	Size	Quantity	Spacing
Ajuga reptans	2L	12	6/m2
Ceanothus thyrsiflorus var. repens	3L	3	3/1m
Erigeron karvinskianus	1L	7	3/1m
Euonymus japonicus 'Microphyllus Albovariegatus'	5L	4	2/m2
Geranium phaeum	5L	30	3/1m
Lavandula angustifolia	5L	27	3/m2
Pittosporum tenuifolium	3L	6	2.5/1m
Pulmonaria officinalis	3L	12	5/m2
Rosa 'Dense de Feu'		1	BR
Rosmarinus officinalis	5L	20	3/m2
Salvia officinalis	5L	16	4/m2

Grasses			
Name	Size	Quantity	Spacing
Liriope muscari	3L	60	5/m2
Stipa tenuissima	3L	6	4/m2

5 Year Maintenance Schedule				
Action	Season			
	Spring	Summer	Autumn	Winter
Check for plant survival and replace if necessary	X	X	X	
Check mulching depth and reapply to a depth of 75mm				X
*Irrigation	X	X	X	
Formative Pruning		X		X
Check tree stakes and ties			X	

*Water requirement will be dependent on species, soil types and weather conditions, however newly planted standard trees up to 18-20cm in girth will require approximately 30litres per day from april-september. This can be reduced in prolonged wet spells. Irrigation will be carried out for the first three growing seasons to ensure good root establishment.

Revisions	
17.06.21	a Update to number of trees
Base Drawing	
17.05.31	1574 EXTERNAL WORKS PLAN 450-453



Title
Landscape Plan- Trees and hard surfaces

Client
Shore Securities Ltd

Project
35 Elsworthy Road NW3 3BT

Date
June 2017

Drawn by
RG

Drawing No
140229-L-10-01

Rev
a

Scale
1:100@A1

DO NOT SCALE Use only figured dimensions

TIM MOYA ASSOCIATES
ARBORICULTURE • LANDSCAPE • ECOLOGY

The Barn, Fellimores Park
Harlow
Essex CM17 0PF

Tel: 0845 094 3268

www.timmoyaassociates.co.uk

