




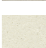
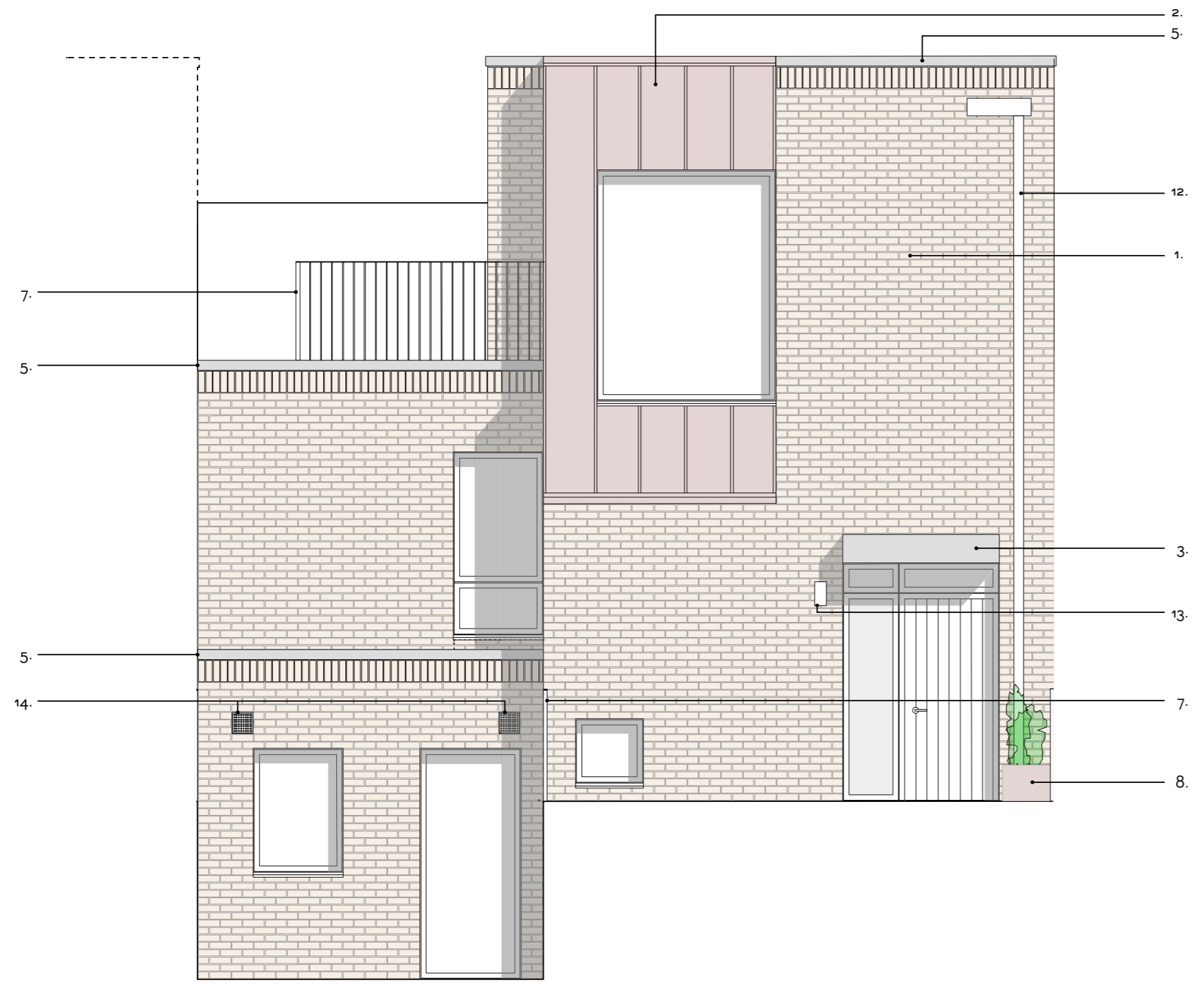


This drawing is prepared for the purposes of a planning application and to show design intent only. The information contained herein must not be used for costing, construction, engineering or any other purposes without agreement in writing from Waugh Thistleton Architects Ltd.

- NOTES**
1. Ibstock Cooksbridge Yellow clamp stock brick, running bond with flush mortar joints, Euromix masonry mortar 'natural'
 2. VM Zinc Pigmento standing seam cladding 'Autumn Red'
 3. Fibre C Concrete canopy 'Sahara'
 4. VM Zinc Pigmento standing seam cladding panel 'Autumn Red'
 5. Woodside Portland Stone coping, grey
 6. Composite Timber / Aluminium thermally broken double glazed windows and doors, Ral colour 8019
 7. Powder coated steel balcony / balustrade, Ral colour 8019
 8. Raised planting beds
 9. Bio-diverse green roof
 10. Paving Type a1 - Entrance
 11. Paving Type a2 - Open Space
 12. Aluminium Rain Water Pipes, square profile, Ral 8019 to brick areas, Ral to match Zinc cladding in Zinc areas
 13. External lighting to Entrance Doors / Amenity space
 14. Airbrick

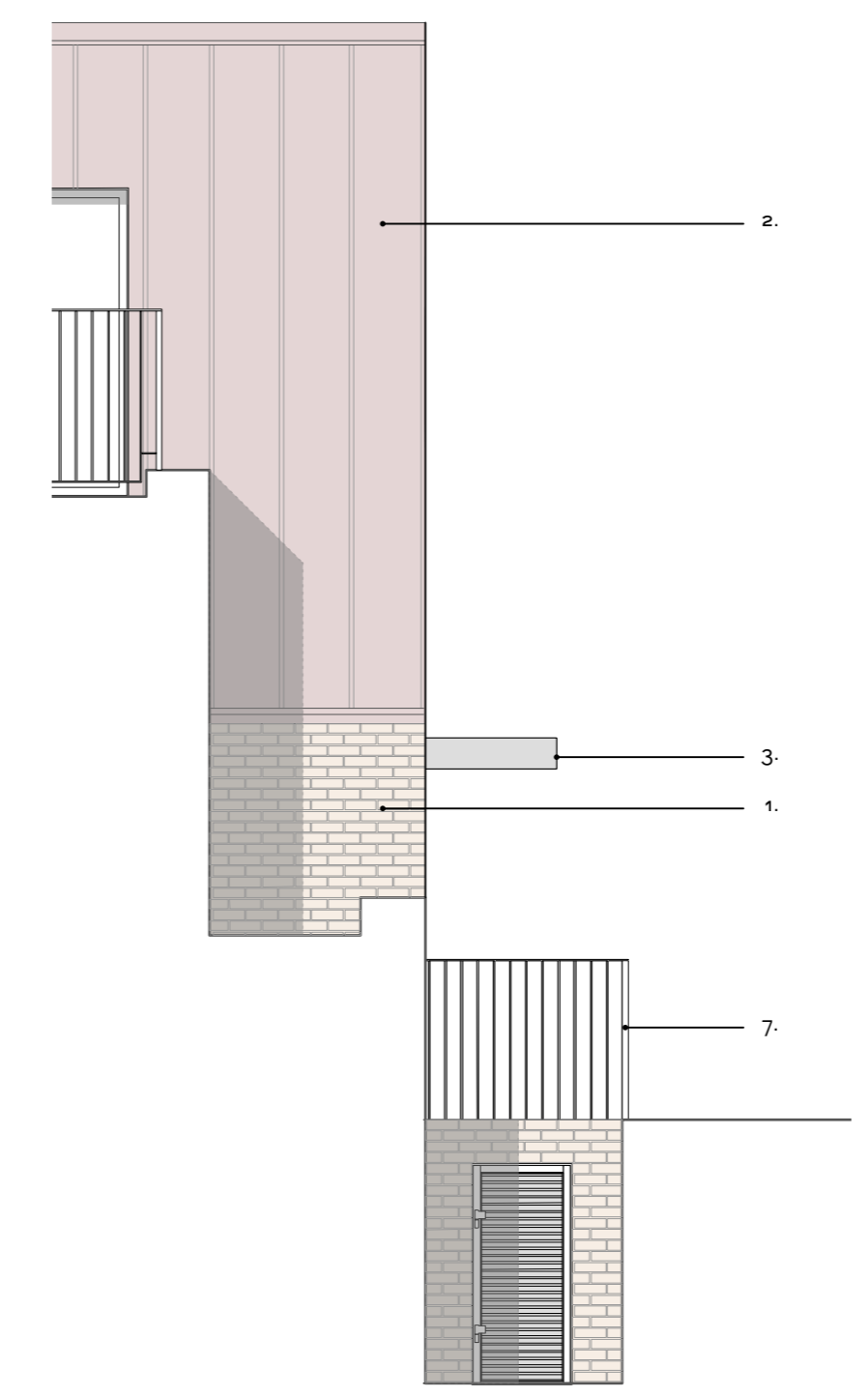
- Material Key:**
-  Ibstock cooksbridge yellow clamp stock
 -  Euromix mortar 'natural'
 -  VM zinc pigmento 'autumn red'
 -  RAL colour: 8019
 -  Portland stone coping
 -  Fibre C FE ferro 'sahara'

NB. For further information on material specification and supplier details, please refer to section 1.0 'outline specifications' of the material specification document.



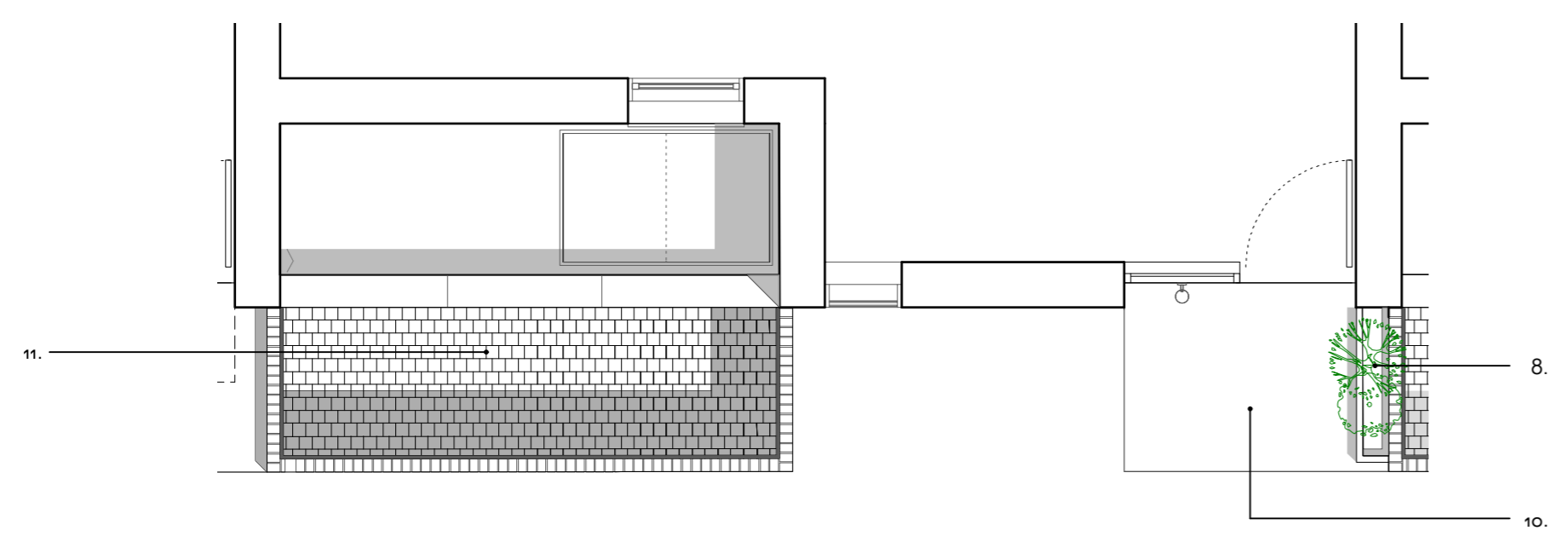
1
1501

Front Elevation
Townhouse



2
1501

Section
Townhouse



2
1501

Plan
Townhouse

B	General updates	07/07/17	
A	Heights amended	10/02/15	
REV	COMMENTS	DATE	CHK

STATUS

PLANNING

Job 277a Grays Inn Road

Title Elevation Detail Courtyard
Homes Front Elevation

Date February 2015

Scale 1:50 @ A2

Drawn PP

Client Regal Homes

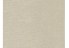
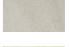
126-1501

This drawing is prepared for the purposes of a planning application and to show design intent only. The information contained herein must not be used for costing, construction, engineering or any other purposes without agreement in writing from Waugh Thistleton Architects Ltd.

NOTES

1. Ibstock Cooksbridge Yellow clamp stock brick, running bond with flush mortar joints, Euromix masonry mortar 'natural'
2. VM Zinc Pigmento standing seam cladding 'Autumn Red'
3. Fibre C Concrete canopy 'Sahara'
4. VM Zinc Pigmento standing seam cladding panel 'Autumn Red'
5. Woodside Portland Stone coping, grey
6. Composite Timber / Aluminium thermally broken double glazed windows and doors, Ral colour 8019
7. Powder coated steel balcony / balustrade, Ral colour 8019
8. Raised planting beds
9. Bio-diverse green roof
10. Paving Type 01 - Entrance
11. Paving Type 02 - Open Space
12. Aluminium Rain Water Pipes, square profile, Ral 8019 to brick areas, Ral to match Zinc cladding in Zinc areas
13. External lighting to Entrance Doors / Amentiy space
14. Airbrick

Material Key:

-  Ibstock cooksbridge yellow clamp stock
-  Euromix mortar 'natural'
-  VM zinc pigmento 'autumn red'
-  RAL colour: 8019
-  Portland stone coping
-  Fibre C FE ferro 'sahara'

NB. For further information on material specification and supplier details, please refer to section 1.0 'outline specifications' of the material specification document.



REV	COMMENTS	DATE	CHK
B	General updates	07/07/17	
A	Heights amended	10/02/15	

STATUS

PLANNING

Job 277a Grays Inn Road

Title Elevation Detail Courtyard
Homes Rear Elevation

Date February 2015

Scale 1:50 @ A2

Drawn PP

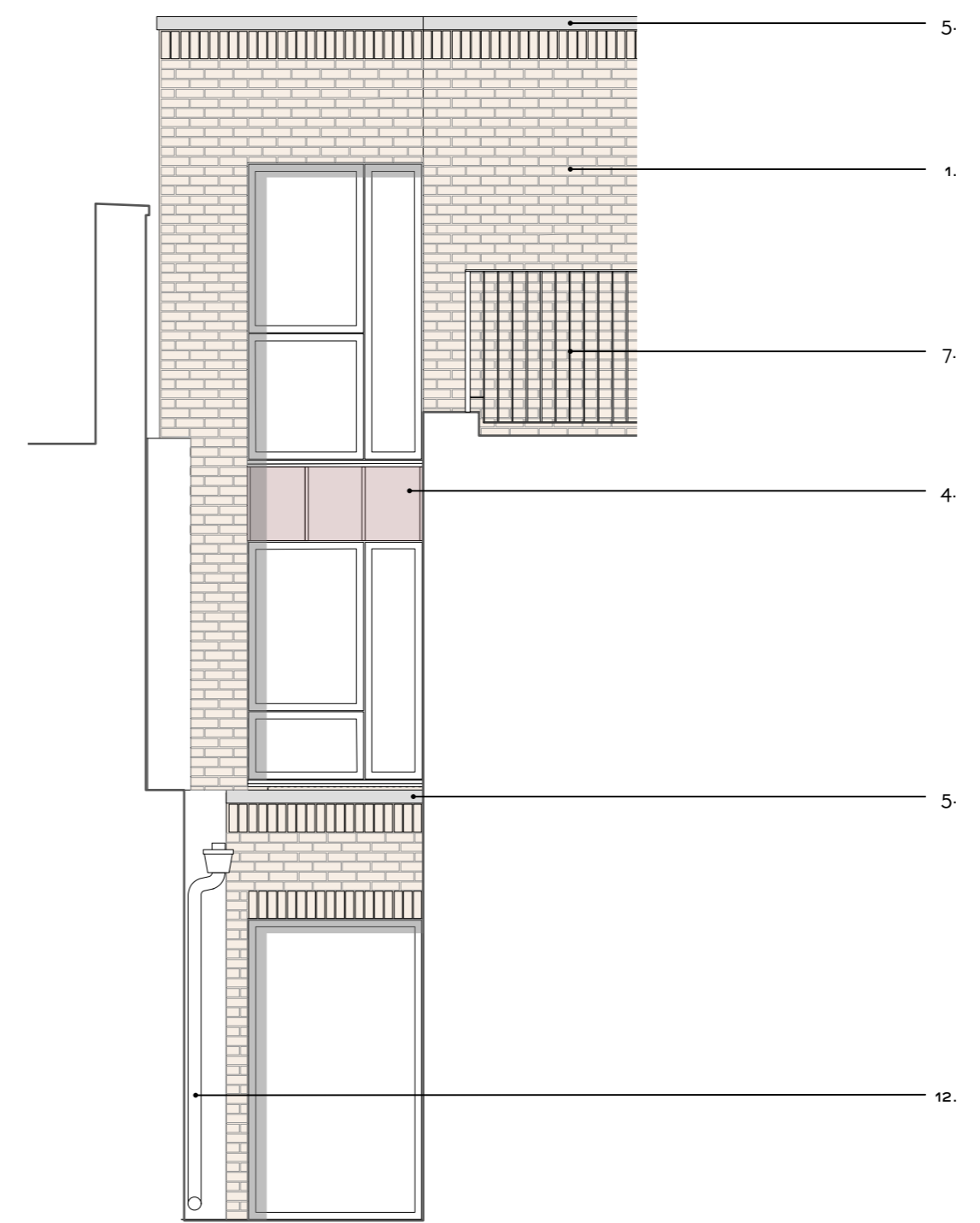
Client Regal Homes

126-1502



1
1502

Rear Elevation
Townhouse



3
1502

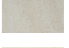
Section
Townhouse

This drawing is prepared for the purposes of a planning application and to show design intent only. The information contained herein must not be used for costing, construction, engineering or any other purposes without agreement in writing from Waugh Thistleton Architects Ltd.

NOTES

1. Ibstock Cocksbridge Yellow clamp stock brick, running bond with flush mortar joints, Euromix masonry mortar 'natural'
2. VM Zinc Pigmento standing seam cladding 'Autumn Red'
3. Fibre C Concrete canopy 'Sahara'
4. VM Zinc Pigmento standing seam cladding panel 'Autumn Red'
5. Woodside Portland Stone coping, grey
6. Composite Timber / Aluminium thermally broken double glazed windows and doors, Ral colour 8019
7. Powder coated steel balcony / balustrade, Ral colour 8019
8. Raised planting beds
9. Bio-diverse green roof
10. Paving Type 01 - Entrance
11. Paving Type 02 - Open Space
12. Aluminium Rain Water Pipes, square profile, Ral 8019 to brick areas, Ral to match Zinc cladding in Zinc areas
13. External lighting to Entrance Doors / Amenity space
14. Airbrick

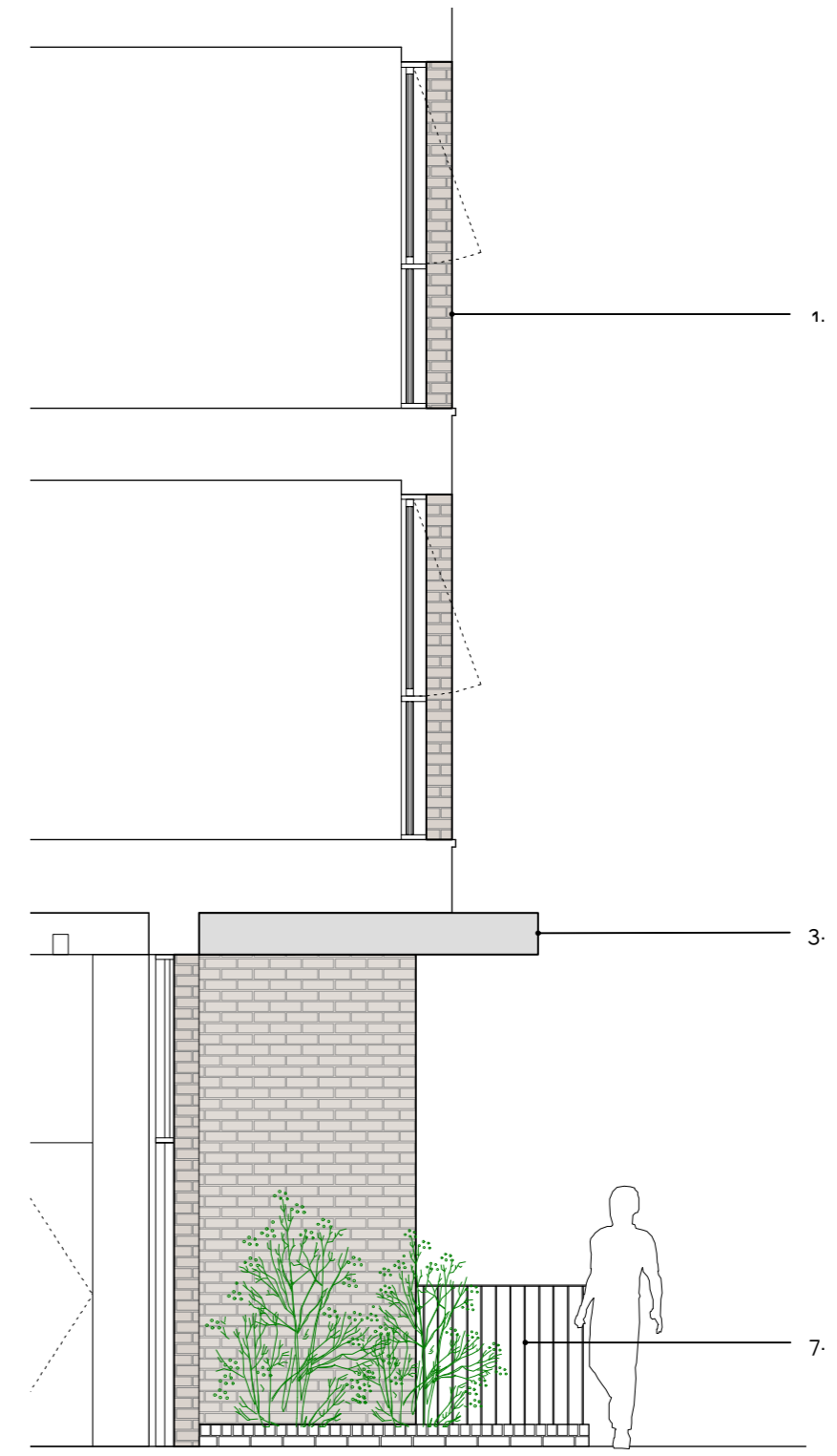
Material Key:

-  Ibstock Cocksbridge yellow clamp stock
-  Euromix mortar 'natural'
-  VM zinc pigmento 'autumn red'
-  RAL colour: 8019
-  Portland stone coping
-  Fibre C FE ferro 'sahara'

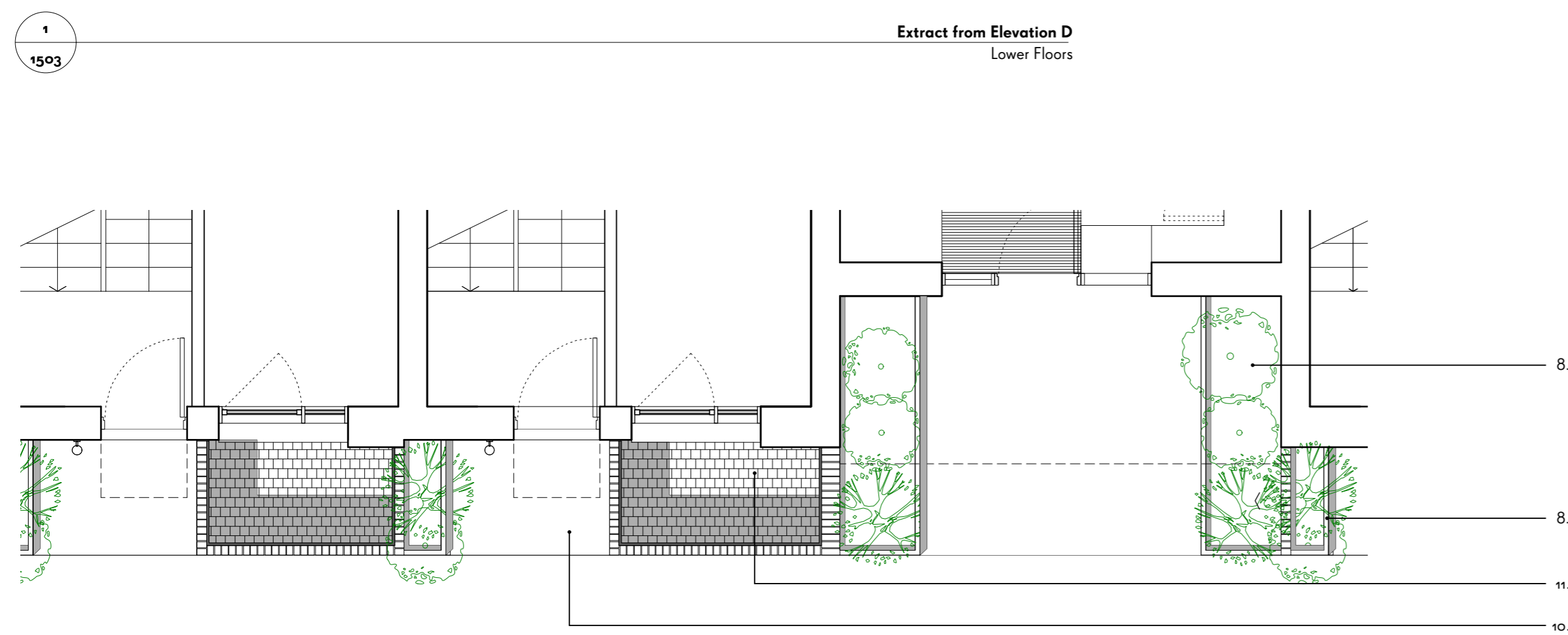
NB. For further information on material specification and supplier details, please refer to section 1.0 'outline specifications' of the material specification document.



Extract from Elevation D
Lower Floors



Section



Extract from Plan
Upper Ground Floor

B	General updates	07/07/17	
A	Heights amended	10/02/15	
REV	COMMENTS	DATE	CHK

STATUS

PLANNING

Job 277a Grays Inn Road

Title Elevation Detail Extract from Elevation D Residential Entrances

Date February 2015

Scale 1:50 @ A2

Drawn PP

Client Regal Homes

WAUGH THISTLETON ARCHITECTS

77 LEONARD STREET LONDON EC2A 4QS
+44(0) 2076135277 WAUGHTHISTLETON.COM

126-1503

This drawing is prepared for the purposes of a planning application and to show design intent only. The information contained herein must not be used for costing, construction, engineering or any other purposes without agreement in writing from Waugh Thistleton Architects Ltd.

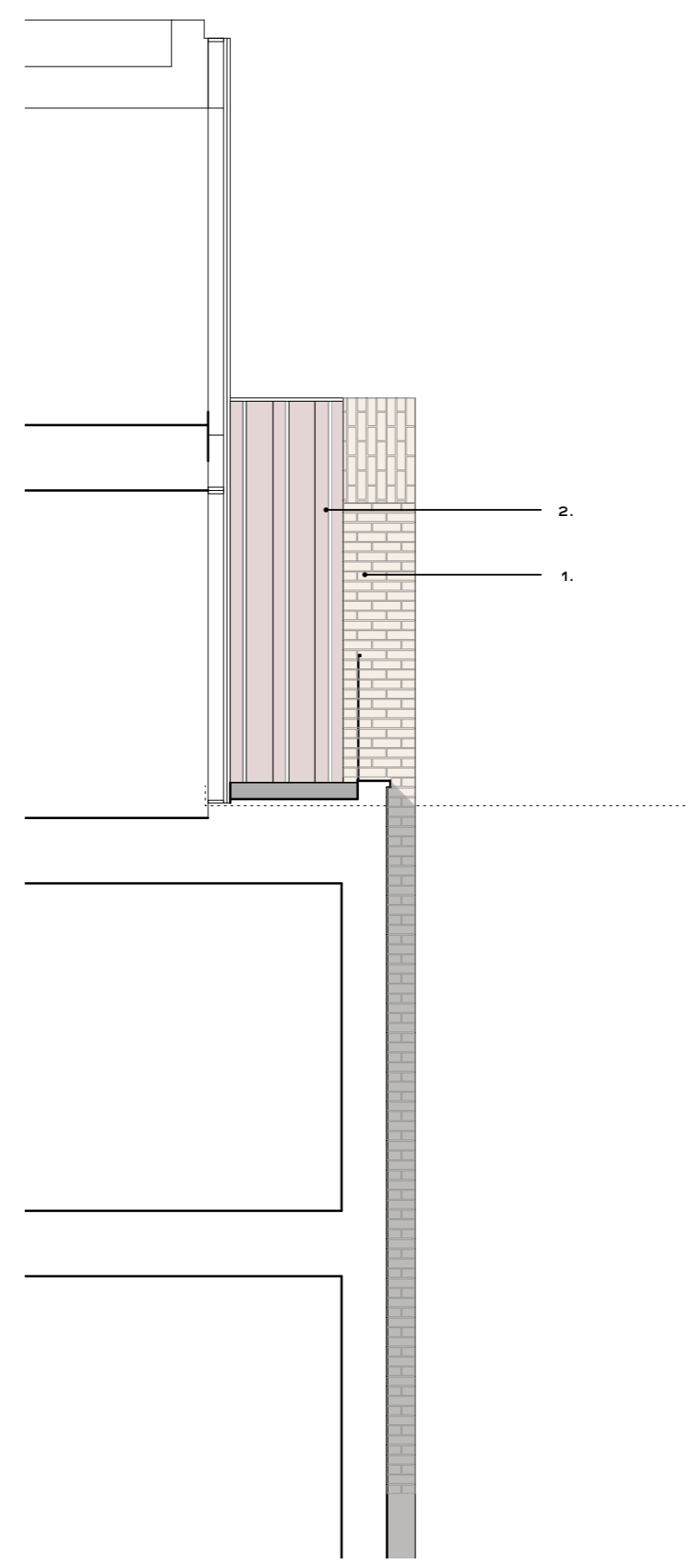
NOTES

1. Ibstock Cooksbridge Yellow clamp stock brick, running bond with flush mortar joints, Euromix masonry mortar 'natural'
2. VM Zinc Pigmento standing seam cladding 'Autumn Red'
3. Fibre C Concrete canopy 'Sahara'
4. VM Zinc Pigmento standing seam cladding panel 'Autumn Red'
5. Woodside Portland Stone coping, grey
6. Composite Timber / Aluminium thermally broken double glazed windows and doors, Ral colour 8019
7. Powder coated steel balcony / balustrade, Ral colour 8019
8. Raised planting beds
9. Bio-diverse green roof
10. Paving Type 01 - Entrance
11. Paving Type 02 - Open Space
12. Aluminium Rain Water Pipes, square profile, Ral 8019 to brick areas, Ral to match Zinc cladding in Zinc areas
13. External lighting to Entrance Doors / Amenity space
14. Airbrick

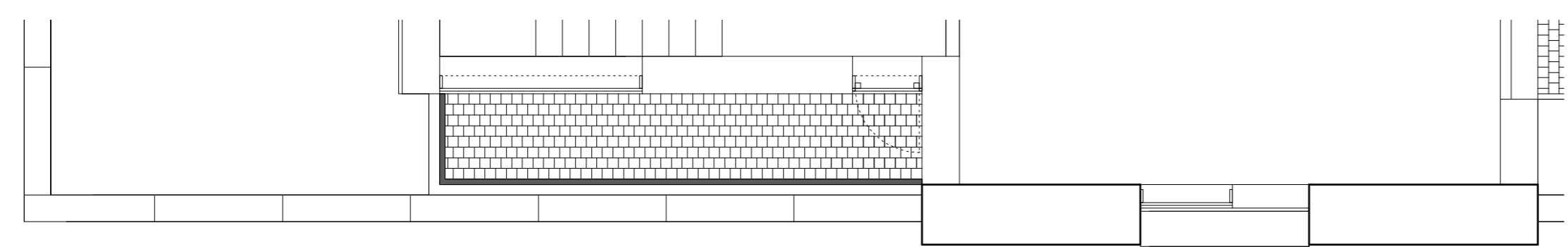
Material Key:

-  Ibstock cooksbridge yellow clamp stock
-  Euromix mortar 'natural'
-  VM zinc pigmento 'autumn red'
-  RAL colour: 8019
-  Portland stone coping
-  Fibre C FE ferro 'sahara'

NB. For further information on material specification and supplier details, please refer to section 1.0 'outline specifications' of the material specification document.



1 1504 **Extract from Elevation D** Upper Floors **3** 1504 **Section**



2 1504 **Extract from Plan** Fifth Floor

B	General updates	07/07/17	
A	Heights amended	10/02/15	
REV	COMMENTS	DATE	CHK

STATUS
PLANNING

Job 277a Grays Inn Road
Title Elevation Detail Extract from Elevation D - Upper Floors
Date May 2011
Scale 1:50 @ A2
Drawn PP
Client Regal Homes

126-1504

This drawing is prepared for the purposes of a planning application and to show design intent only. The information contained herein must not be used for costing, construction, engineering or any other purposes without agreement in writing from Waugh Thistleton Architects Ltd.

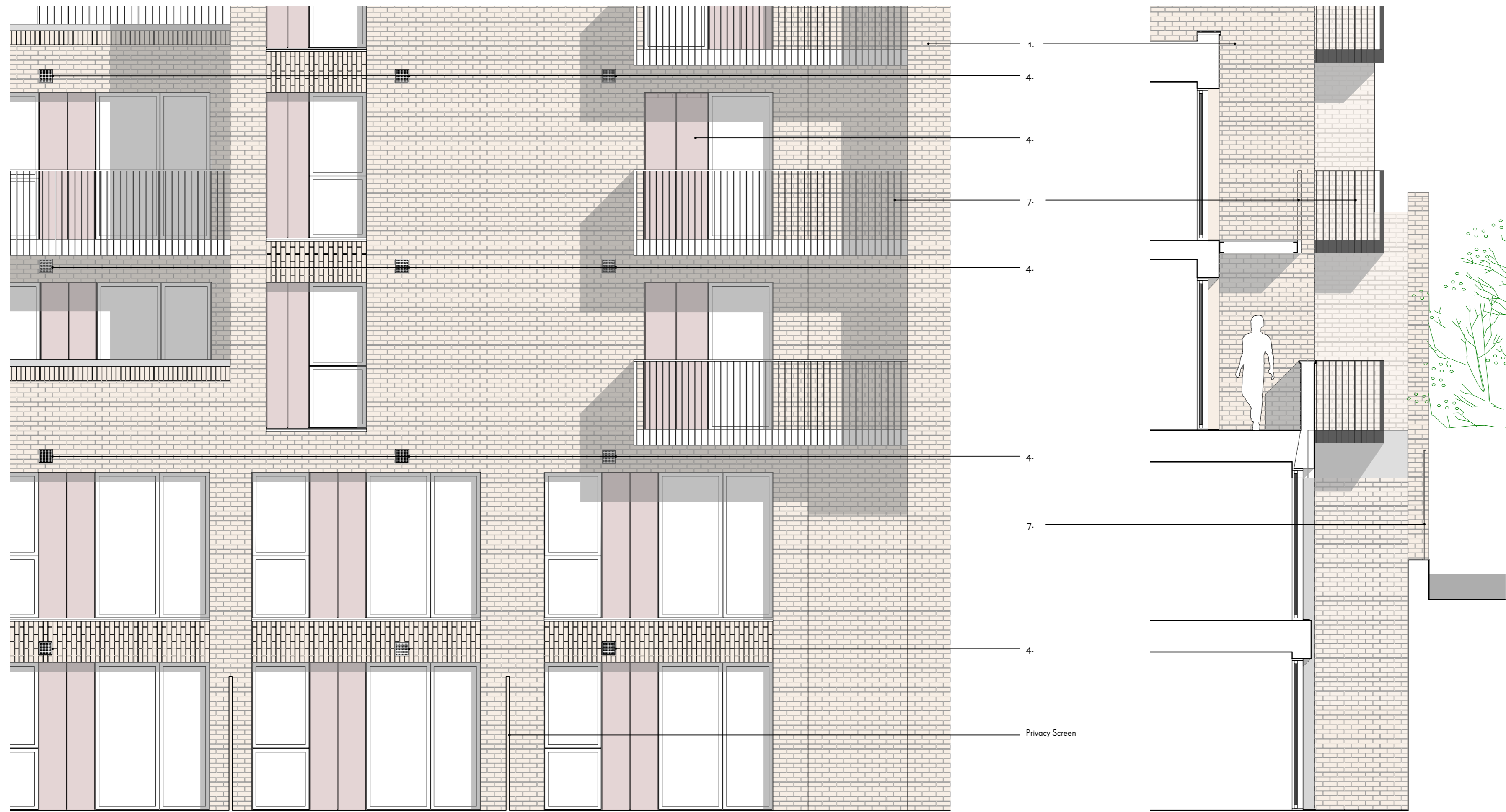
NOTES

1. Ibstock Cooksbridge Yellow clamp stock brick, running bond with flush mortar joints, Euromix masonry mortar 'natural'
2. VM Zinc Pigmento standing seam cladding 'Autumn Red'
3. Fibre C Concrete canopy 'Sahara'
4. VM Zinc Pigmento standing seam cladding panel 'Autumn Red'
5. Woodside Portland Stone coping, grey
6. Composite Timber / Aluminium thermally broken double glazed windows and doors, Ral colour 8019
7. Powder coated steel balcony / balustrade, Ral colour 8019
8. Raised planting beds
9. Bio-diverse green roof
10. Paving Type 01 - Entrance
11. Paving Type 02 - Open Space
12. Aluminium Rain Water Pipes, square profile, Ral 8019 to brick areas, Ral to match Zinc cladding in Zinc areas
13. External lighting to Entrance Doors / Amenity space
14. Airbrick

Material Key:

-  Ibstock cook'sbridge yellow clamp stock
-  Euromix mortar 'natural'
-  VM zinc pigment 'autumn red'
-  RAL colour: 8019
-  Portland stone coping
-  Fibre C FE ferro 'sahara'

NB. For further information on material specification and supplier details, please refer to section 1.0 'outline specifications' of the material specification document.



1
1505

Extract from Elevation
West (Number 1)

2
1505

Section

B	General updates	07/07/17	
A	Heights amended	10/02/15	
REV	COMMENTS	DATE	CHK

STATUS

PLANNING

Job 277a Grays Inn Road

Title Elevation Detail
West Elevation Extract (i)

Date February 2015

Scale 1:50 @ A2

Drawn PP

Client Regal Homes

126-1505

WAUGH THISTLETON
ARCHITECTS

77 LEONARD STREET LONDON EC2A 4QS
+44(0) 2076135277 WAUGHTHISTLETON.COM

This drawing is prepared for the purposes of a planning application and to show design intent only. The information contained herein must not be used for costing, construction, engineering or any other purposes without agreement in writing from Waugh Thistleton Architects Ltd.

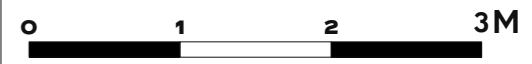
NOTES

1. Ibstock Cooksbridge Yellow clamp stock brick, running bond with flush mortar joints, Euromix masonry mortar 'natural'
2. VM Zinc Pigmento standing seam cladding 'Autumn Red'
3. Fibre C Concrete canopy 'Sahara'
4. VM Zinc Pigmento standing seam cladding panel 'Autumn Red'
5. Woodside Portland Stone coping, grey
6. Composite Timber / Aluminium thermally broken double glazed windows and doors, Ral colour 8019
7. Powder coated steel balcony / balustrade, Ral colour 8019
8. Raised planting beds
9. Bio-diverse green roof
10. Paving Type 01 - Entrance
11. Paving Type 02 - Open Space
12. Aluminium Rain Water Pipes, square profile, Ral 8019 to brick areas, Ral to match Zinc cladding in Zinc areas
13. External lighting to Entrance Doors / Amenity space
14. Airbrick

Material Key:

-  Ibstock cooksbridge yellow clamp stock
-  Euromix mortar 'natural'
-  VM zinc pigmento 'autumn red'
-  RAL colour: 8019
-  Portland stone coping
-  Fibre C FE ferro 'sahara'

NB. For further information on material specification and supplier details, please refer to section 1.0 'outline specifications' of the material specification document.



REV	COMMENTS	DATE	CHK
C	General updates	7/7/17	
B	General updates	10/07/16	
A	Heights amended	10/02/15	

STATUS

PLANNING

Job 277a Grays Inn Road

Title Elevation Detail
West Elevation Extract (ii)

Date February 2015

Scale 1:50 @ A2

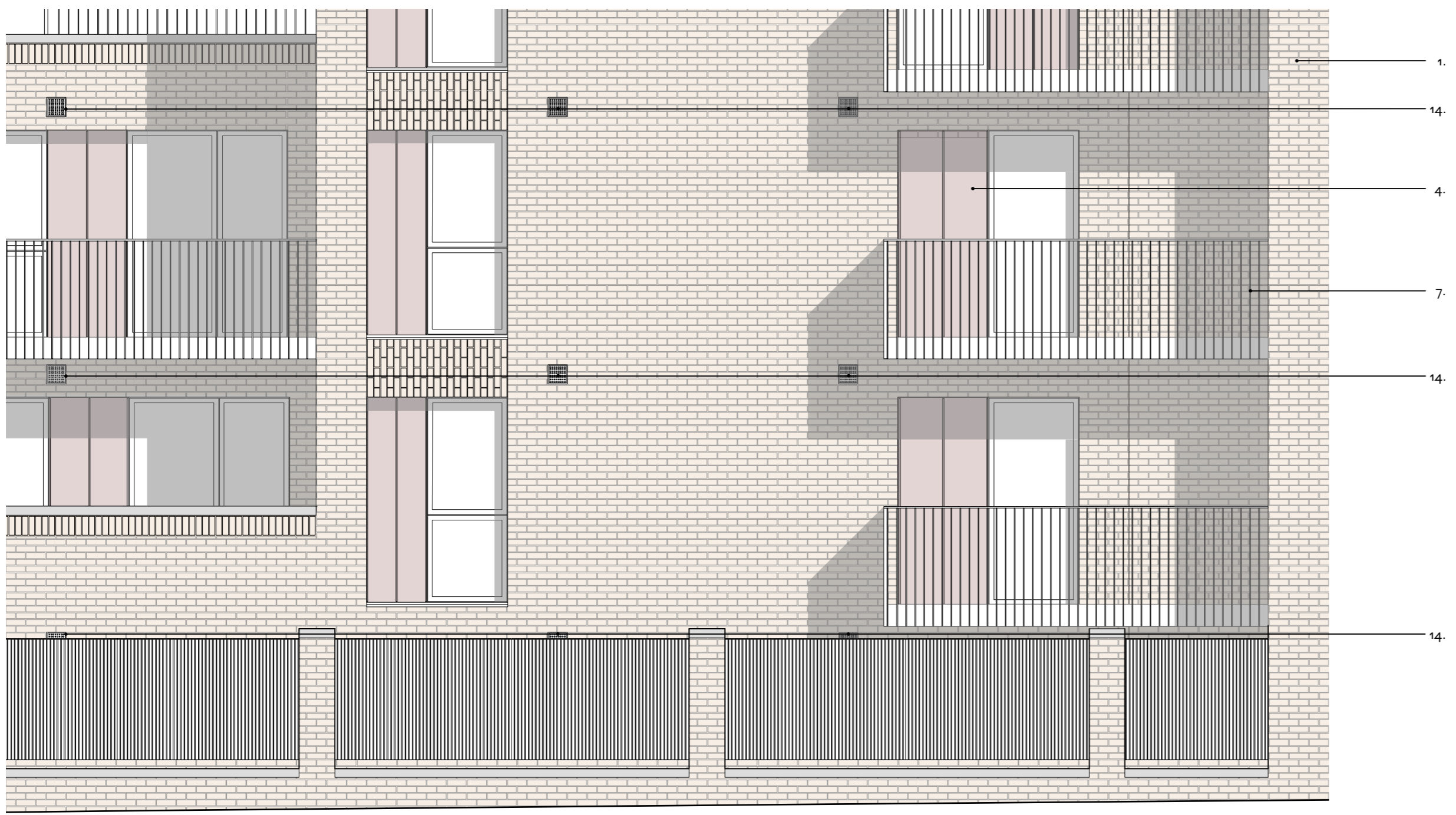
Drawn PP

Client Regal Homes

126-1506

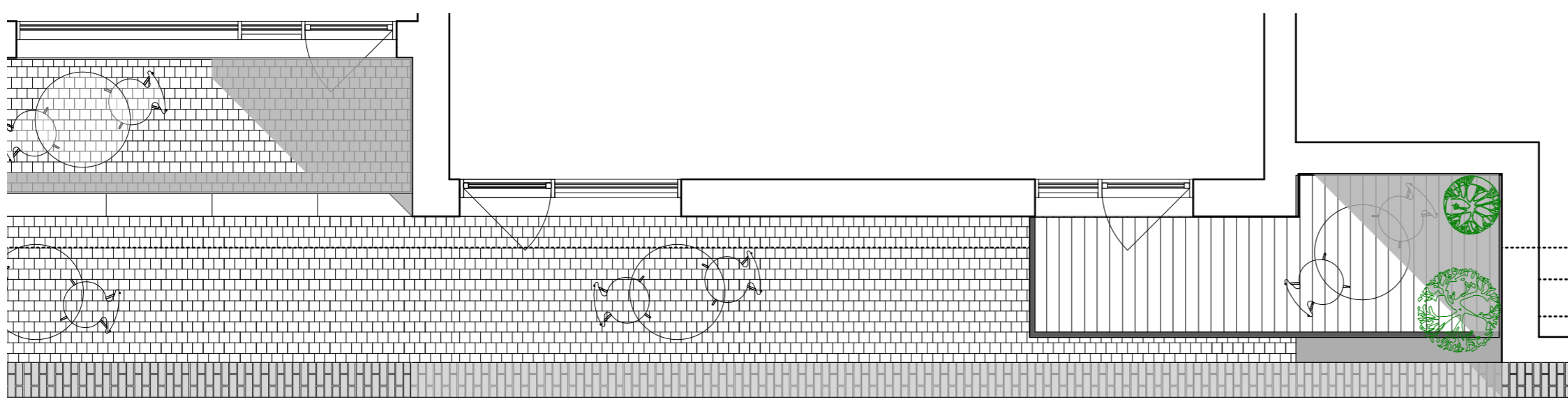
WAUGH THISTLETON ARCHITECTS

77 LEONARD STREET LONDON EC2A 4QS
+44(0) 2076135277 WAUGHTHISTLETON.COM



1
1506

Extract from Elevation
West (Number 2)



2
1506

Extract from Plan

This drawing is prepared for the purposes of a planning application and to show design intent only. The information contained herein must not be used for costing, construction, engineering or any other purposes without agreement in writing from Waugh Thistleton Architects Ltd.

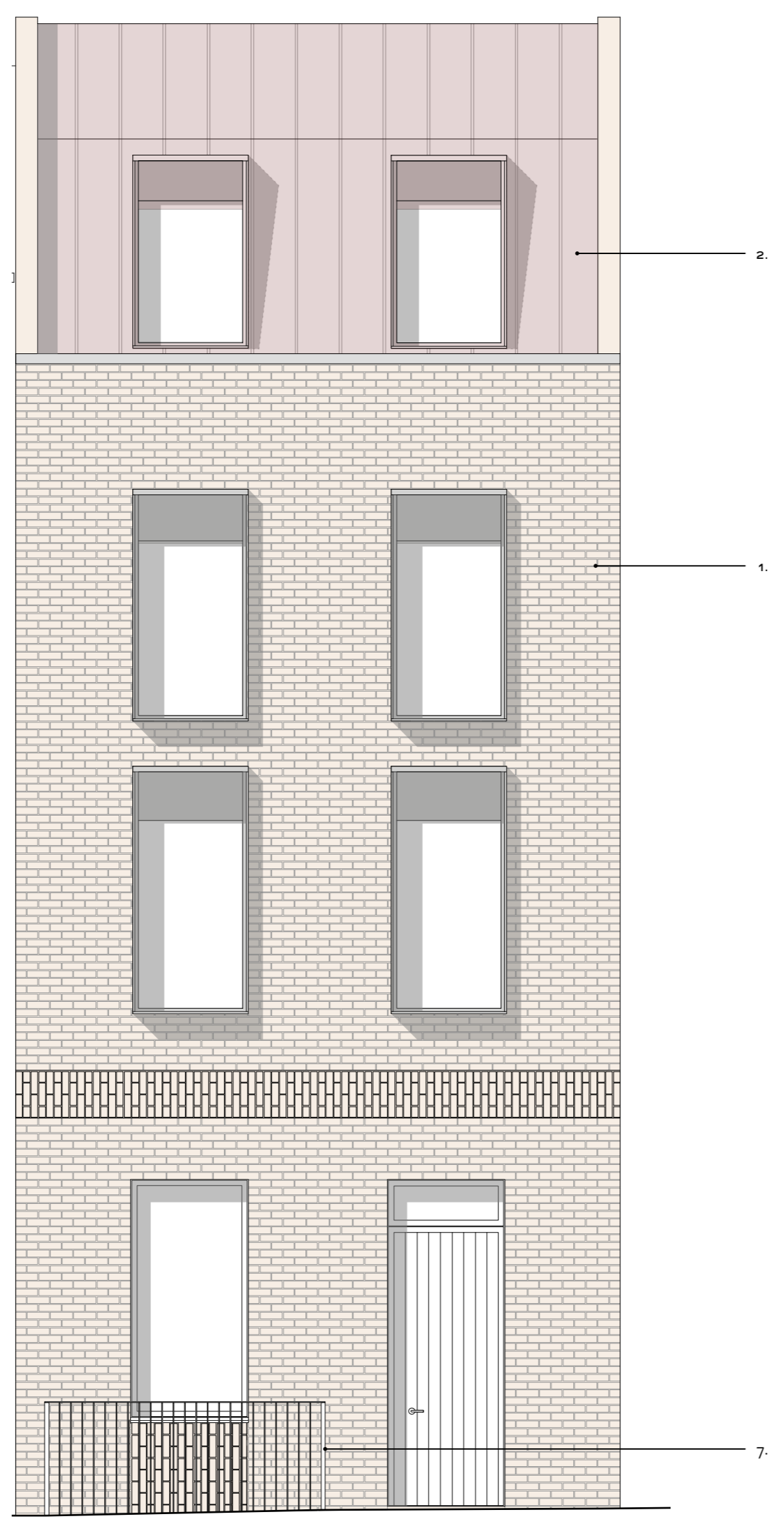
NOTES

1. Ibstock Cooksbridge Yellow clamp stock brick, running bond with flush mortar joints, Euromix masonry mortar 'natural'
2. VM Zinc Pigmento standing seam cladding 'Autumn Red'
3. Fibre C Concrete canopy 'Sahara'
4. VM Zinc Pigmento standing seam cladding panel 'Autumn Red'
5. Woodside Portland Stone coping, grey
6. Composite Timber / Aluminium thermally broken double glazed windows and doors, Ral colour 8019
7. Powder coated steel balcony / balustrade, Ral colour 8019
8. Raised planting beds
9. Bio-diverse green roof
10. Paving Type 01 - Entrance
11. Paving Type 02 - Open Space
12. Aluminium Rain Water Pipes, square profile, Ral 8019 to brick areas, Ral to match Zinc cladding in Zinc areas
13. External lighting to Entrance Doors / Amenity space
14. Airbrick

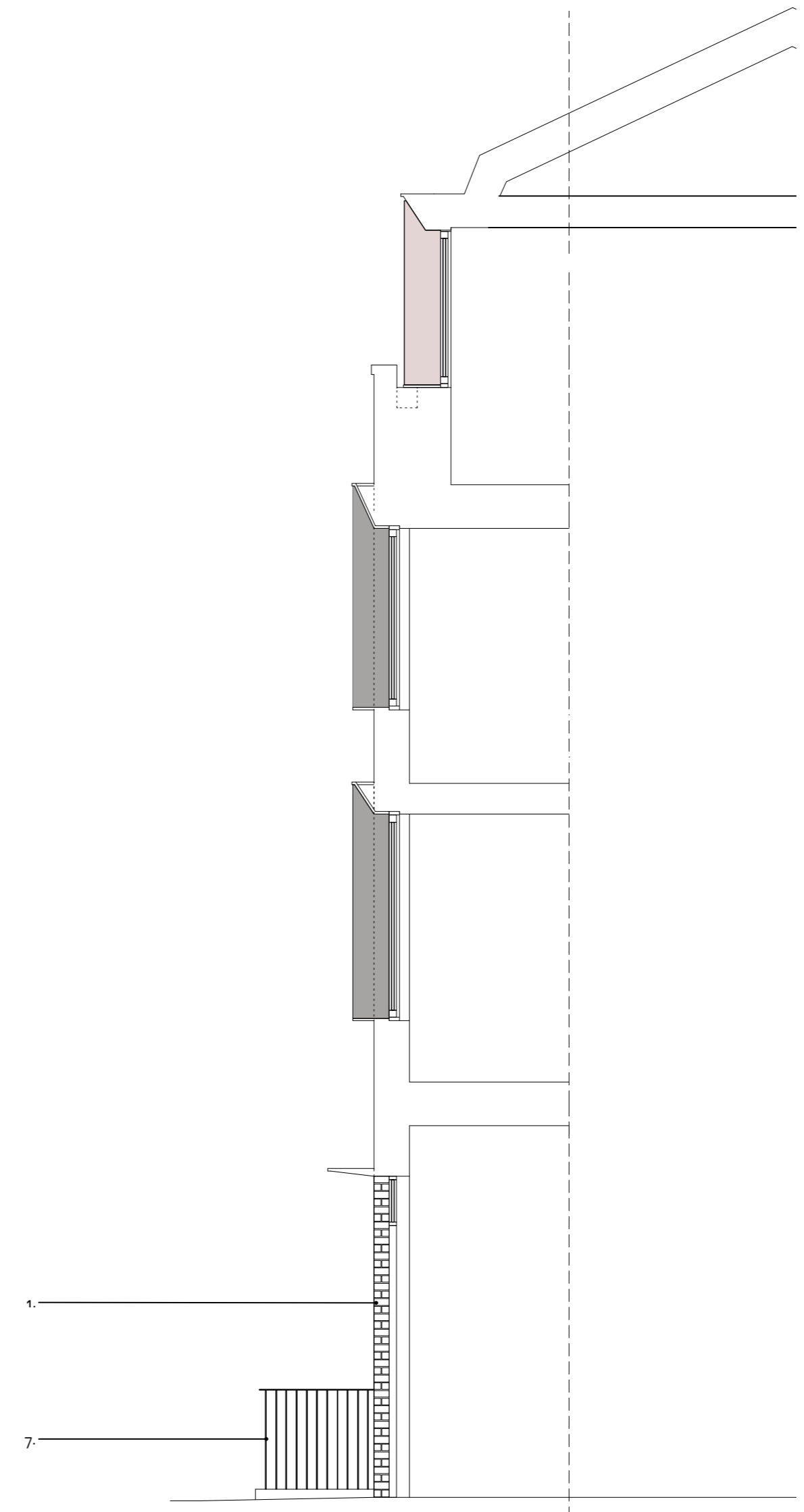
Material Key:

-  Ibstock cooksbridge yellow clamp stock
-  Euromix mortar 'natural'
-  VM zinc pigmento 'autumn red'
-  RAL colour: 8019
-  Portland stone coping
-  Fibre C FE ferro 'sahara'

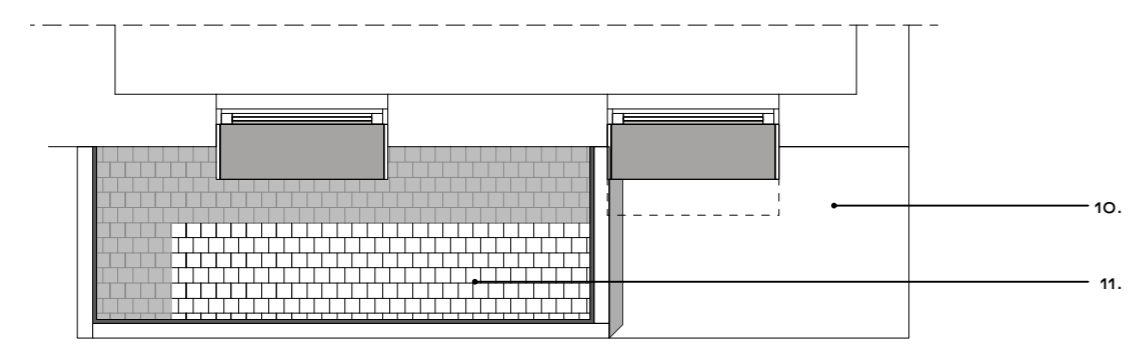
NB. For further information on material specification and supplier details, please refer to section 1.0 'outline specifications' of the material specification document.



1
1507 **Elevation**
St Chads Street



3
1507 **Section**
St Chads Street



2
1507 **Plan**
St Chads Street

REV	COMMENTS	DATE	CHK
C	General updates	7/7/17	
B	General updates	10/07/16	
A	Heights amended	10/02/15	

STATUS

PLANNING

Job 277a Grays Inn Road
Title Elevation Detail
 St Chads Street Front Elevation
Date February 2015
Scale 1:50 @ A2
Drawn PP
Client Regal Homes

126-1508