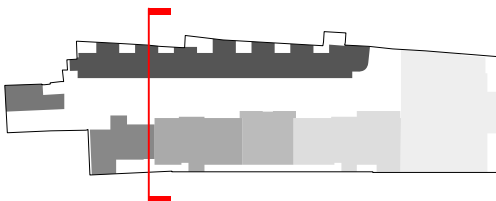
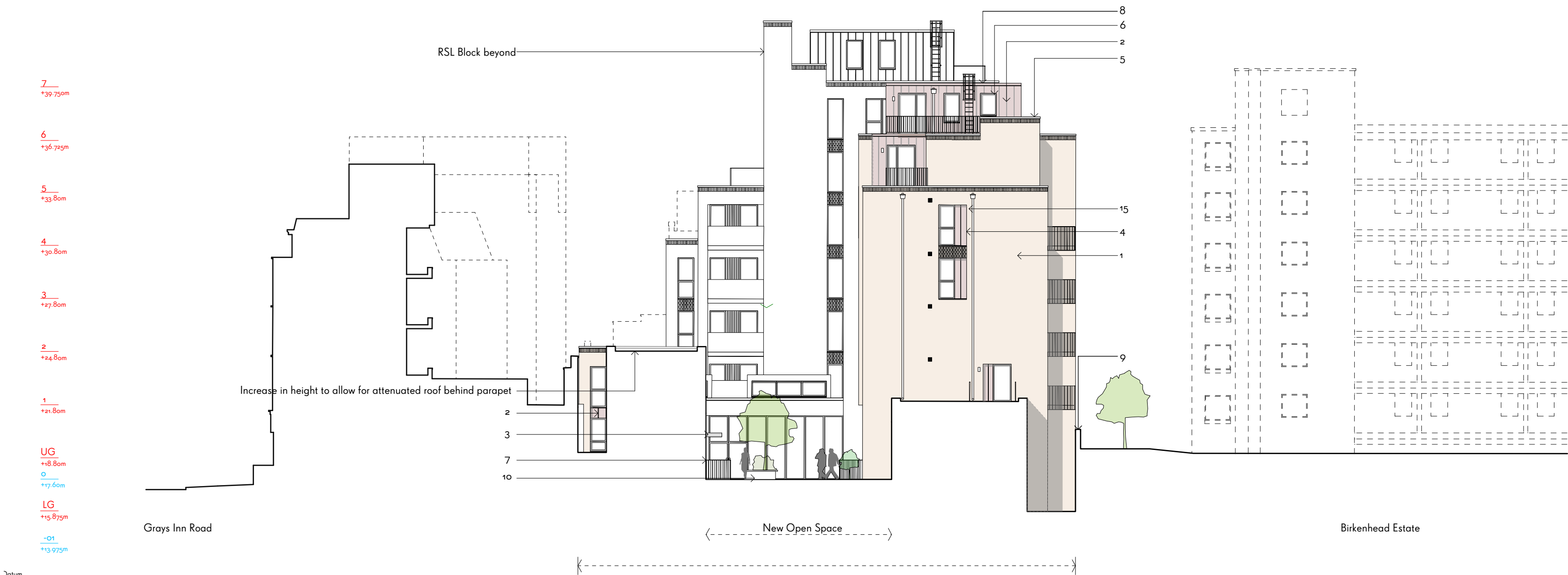

APPENDIX 9.0

NOTES

1. Ibstock Cooksbridge Yellow clamp stock brick, running bond with flush mortar joints, Euromix masonry mortar 'natural'
2. VM Zinc Pigmento standing seam cladding 'Autumn Red'
3. Fibre C Concrete canopy 'Sahara'
4. VM Zinc Pigmento standing seam cladding panel 'Autumn Red'
5. Woodside Portland Stone coping, grey
6. Composite Timber / Aluminium thermally broken double glazed windows and doors, Ral colour 809g
7. Powder coated steel balcony / balustrade, Ral colour 809g
8. Bio-Diverse green roof
9. Boundary wall, Ibstock Cooksbridge Yellow Brick, height varies
10. Raised planting beds
11. Private residential entrance door
12. Communal residential entrance
13. Commerical Bt entrance
14. Bin Store / Recycling louvered door, Ral 809g
15. Aluminium Rain Water Pipes, square profile, Ral 809g to brick areas, Ral to match Zinc cladding in Zinc areas
16. External lighting to Entrance Doors / Amentiy space



D	Standing seam side panels revised	6/7/17	
C	General revisions incorporating further coordination	27/2/17	
B	Revised in line with design coordination	23/1/16	
A	Heights Amended	16/02/15	
REV	COMMENTS	DATE	CHK

STATUS

PLANNING

Job 277a Grays Inn Road

Title Proposed Section A
Sheet 1 of 10

Date October 2016

Scale 1:200 @ A2

Drawn JY

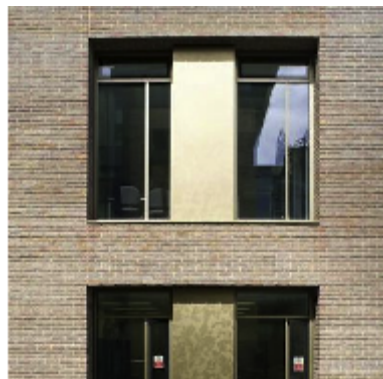
Client Regal Homes

WAUGH THISTLETON
ARCHITECTS

77 LEONARD STREET LONDON EC2A 4QS
+44 (0) 20 76133727 WAUGHTHISTLETON.COM



Mixed stock facing brick - contrasting tones
Architect: PRP Architects



Deep brick reveals with aluminium windows & panels
Architect: Hawkins Brown



Varying reveals to articulate forms and massing
Architect: Panter Hudspith



Stepping & recessed massing
Architect: Allies and Morrison

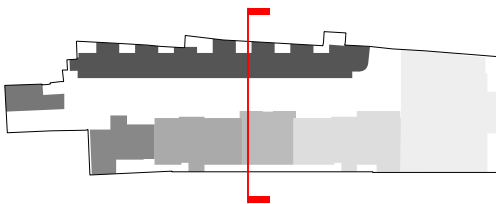
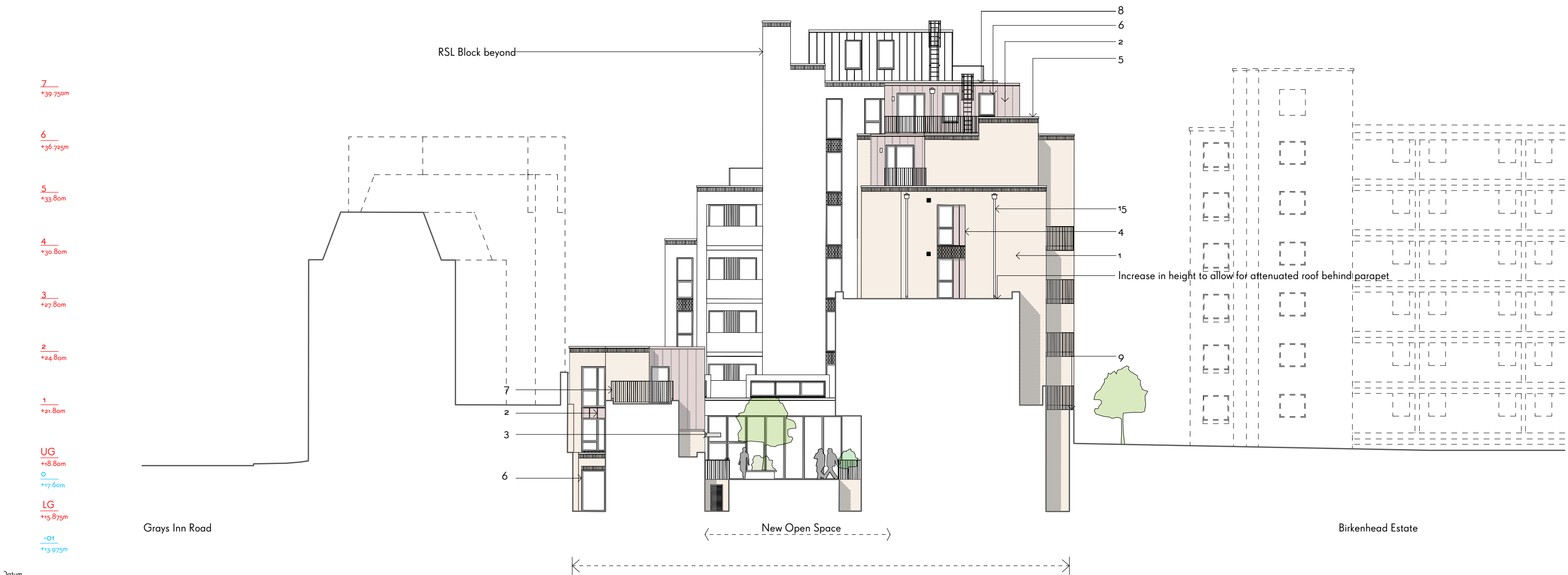


Lightweight, complementary upper storeys
Architect: Duggan Morris

126-1301

NOTES

1. Ibstock Cooksbridge Yellow clamp stock brick, running bond with flush mortar joints, Euromix masonry mortar 'natural'
2. VM Zinc Pigmento standing seam cladding 'Autumn Red'
3. Fibre C Concrete canopy 'Sahara'
4. VM Zinc Pigmento standing seam cladding panel 'Autumn Red'
5. Woodside Portland Stone coping, grey
6. Composite Timber / Aluminium thermally broken double glazed windows and doors, Ral colour 809g
7. Powder coated steel balcony / balustrade, Ral colour 809g
8. Bio-Diverse green roof
9. Boundary wall, Ibstock Cooksbridge Yellow Brick, height varies
10. Raised planting beds
11. Private residential entrance door
12. Communal residential entrance
13. Commerical Bt entrance
14. Bin Store / Recycling louvered door, Ral 809g
15. Aluminium Rain Water Pipes, square profile, Ral 809g to brick areas, Ral to match Zinc cladding in Zinc areas
16. External lighting to Entrance Doors / Amentiy space



D	Standing seam side panels revised	6/7/17	
C	General revisions incorporating further coordination	27/2/17	
B	Revised in line with design coordination	23/11/16	
A	Heights Amended	16/02/15	
REV	COMMENTS	DATE	CHK

STATUS

PLANNING

Job 277a Grays Inn Road

Title Proposed Section B
Sheet 2 of 10

Date October 2016

Scale 1:200 @ A2

Drawn JY

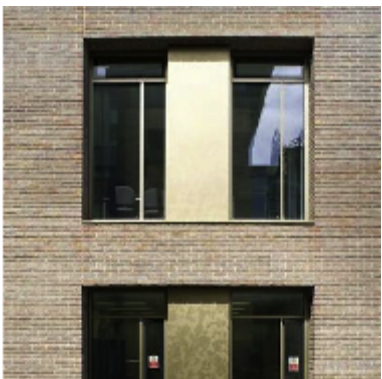
Client Regal Homes

WAUGH THISTLETON
ARCHITECTS

77 LEONARD STREET LONDON EC2A 4QS
+44 (0) 20 7613 5727 WAUGHTHISTLETON.COM



Mixed stock facing brick - contrasting tones
Architect: PRP Architects



Deep brick reveals with aluminium windows & panels
Architect: Hawkins Brown



Varying reveals to articulate forms and massing
Architect: Panter Hudspith



Stepping & recessed massing
Architect: Allies and Morrison

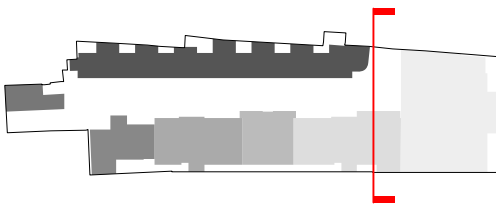


Lightweight, complementary upper storeys
Architect: Duggan Morris

126-1302

NOTES

1. Ibstock Cooksbridge Yellow clamp stock brick, running bond with flush mortar joints, Euromix masonry mortar 'natural'
2. VM Zinc Pigmento standing seam cladding 'Autumn Red'
3. Fibre C Concrete canopy 'Sahara'
4. VM Zinc Pigmento standing seam cladding panel 'Autumn Red'
5. Woodside Portland Stone coping, grey
6. Composite Timber / Aluminium thermally broken double glazed windows and doors, Ral colour 809g
7. Powder coated steel balcony / balustrade, Ral colour 809g
8. Bio-Diverse green roof
9. Boundary wall, Ibstock Cooksbridge Yellow Brick, height varies
10. Raised planting beds
11. Private residential entrance door
12. Communal residential entrance
13. Commerical Bt entrance
14. Bin Store / Recycling louvered door, Ral 809g
15. Aluminium Rain Water Pipes, square profile, Ral 809g to brick areas, Ral to match Zinc cladding in Zinc areas
16. External lighting to Entrance Doors / Amentiy space



E	Standing seam side panels revised	6/7/17	
D	Revisions incorporating construction Information	4/7/17	
C	General revisions incorporating further coordination	27/2/17	
B	Revised in line with design coordination	23/11/16	
A	Heights Amended	16/02/15	
REV	COMMENTS	DATE	CHK

STATUS

PLANNING

Job 277a Grays Inn Road

Title Proposed Section C
Sheet 3 of 10

Date October 2016

Scale 1:200 @ A2

Drawn JY

Client Regal Homes

126-1303

WAUGH THISTLETON
ARCHITECTS

77 LEONARD STREET LONDON EC2A 4QS
+44 (0) 20 7613 5727 WAUGHTHISTLETON.COM

7
+39.750m

6
+36.725m

5
+33.80m

4
+30.80m

3
+27.80m

2
+24.80m

1
+21.80m

UG
+18.80m
0
+17.60m

LG
+15.875m

-01
+13.975m

datum

Increase in height to allow for attenuated roof behind parapet

Grays Inn Road

New Open Space

Birkenhead Estate

0 5 10 15 20 25 M



Planting and seating to external open space



Glazed shopfront to cafe / gallery



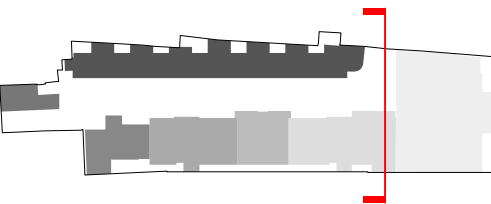
Varying reveals to articulate forms and massing
Architect: Panier Hudspeth



Stepping & recessed massing
Architect: Allies and Morrison

NOTES

1. Ibstock Cooksbridge Yellow clamp stock brick, running bond with flush mortar joints, Euromix masonry mortar 'natural'
2. VM Zinc Pigmento standing seam cladding 'Autumn Red'
3. Fibre C Concrete canopy 'Sahara'
4. VM Zinc Pigmento standing seam cladding panel 'Autumn Red'
5. Woodside Portland Stone coping, grey
6. Composite Timber / Aluminium thermally broken double glazed windows and doors, Ral colour 809g
7. Powder coated steel balcony / balustrade, Ral colour 809g
8. Bio-Diverse green roof
9. Boundary wall, Ibstock Cooksbridge Yellow Brick, height varies
10. Raised planting beds
11. Private residential entrance door
12. Communal residential entrance
13. Commerical Bt entrance
14. Bin Store / Recycling louvered door, Ral 809g
15. Aluminium Rain Water Pipes, square profile, Ral 809g to brick areas, Ral to match Zinc cladding in Zinc areas
16. External lighting to Entrance Doors / Amentiy space



D	Standing seam side panels revised	6/7/17
C	General revisions incorporating further coordination	27/2/17
B	Revised in line with design coordination	23/11/16
A	Heights Amended	16/02/15

REV	COMMENTS	DATE	CHK
-----	----------	------	-----

STATUS

PLANNING

Job 277a Grays Inn Road

Title Proposed Section D
Sheet 4 of 10

Date October 2016

Scale 1:200 @ A2

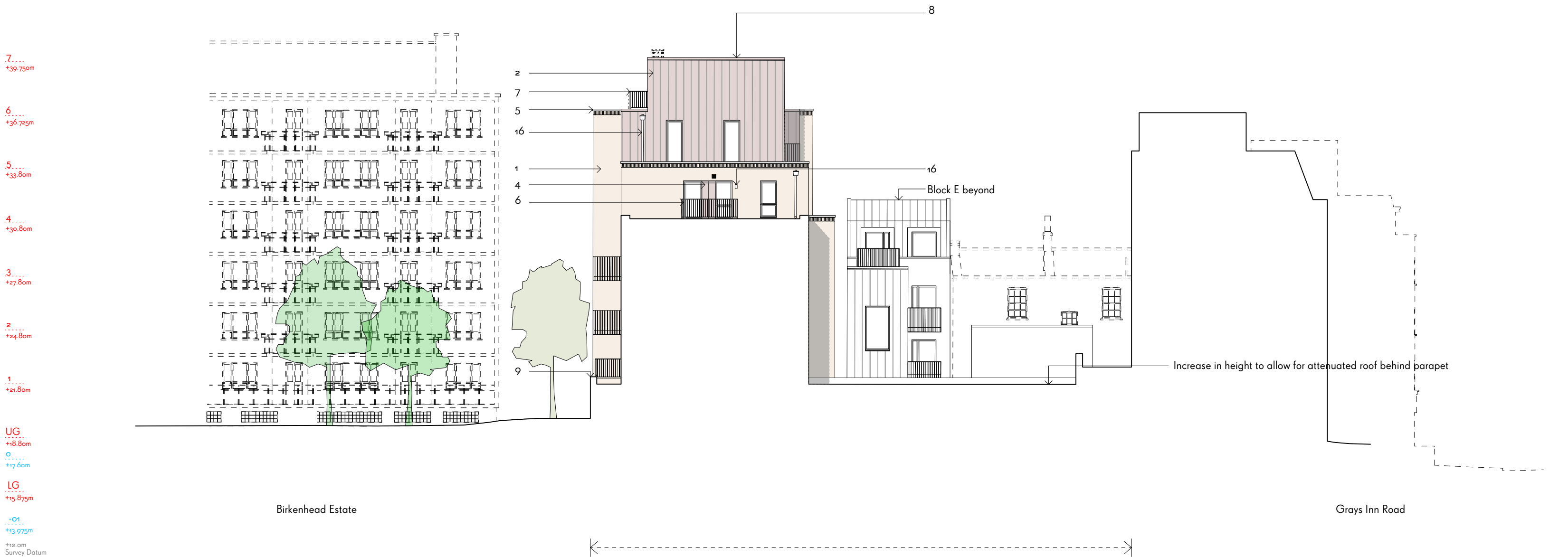
Drawn JY

Client Regal Homes

126-1304

WAUGH THISTLETON
ARCHITECTS

77 LEONARD STREET LONDON EC2A 4QS
+44 (0) 20 76133727 WAUGHTHISTLETON.COM



Private gardens to rear of ground floor dwellings
Architect: FCB Studios



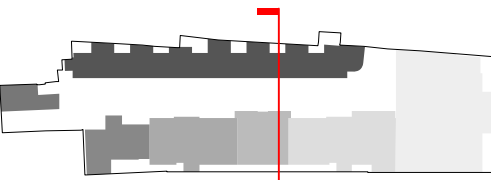
Green roofs provide visual amenity to both neighbouring
and new occupants
Architect: Hawkins/Brown



Lightweight, complementary upper storeys
Architect: Duggan Morris

NOTES

1. Ibstock Cooksbridge Yellow clamp stock brick, running bond with flush mortar joints, Euromix masonry mortar 'natural'
2. VM Zinc Pigmento standing seam cladding 'Autumn Red'
3. Fibre C Concrete canopy 'Sahara'
4. VM Zinc Pigmento standing seam cladding panel 'Autumn Red'
5. Woodside Portland Stone coping, grey
6. Composite Timber / Aluminium thermally broken double glazed windows and doors, Ral colour 809
7. Powder coated steel balcony / balustrade, Ral colour 809
8. Bio-Diverse green roof
9. Boundary wall, Ibstock Cooksbridge Yellow Brick, height varies
10. Raised planting beds
11. Private residential entrance door
12. Communal residential entrance
13. Commerical Bt entrance
14. Bin Store / Recycling louvered door, Ral 809
15. Aluminium Rain Water Pipes, square profile, Ral 809 to brick areas, Ral to match Zinc cladding in Zinc areas
16. External lighting to Entrance Doors / Amentiy space



D	Standing seam side panels revised	6/7/17
C	General revisions incorporating further coordination	27/2/17
B	Revised in line with design coordination	23/11/16
A	Heights Amended	16/02/15

REV	COMMENTS	DATE	CHK
-----	----------	------	-----

STATUS

PLANNING

Job 277a Grays Inn Road

Title Proposed Section E
Sheet 5 of 10

Date October 2016

Scale 1:200 @ A2

Drawn JY

Client Regal Homes

126-1305

WAUGH THISTLETON
ARCHITECTS

77 LEONARD STREET LONDON EC2A 4QS
+44 (0) 20 7613 5727 WAUGHTHISTLETON.COM



Private gardens to rear of ground floor dwellings
Architect: FCB Studios



Green roofs provide visual amenity to both neighbouring
and new occupants
Architect: HawkinsBrown



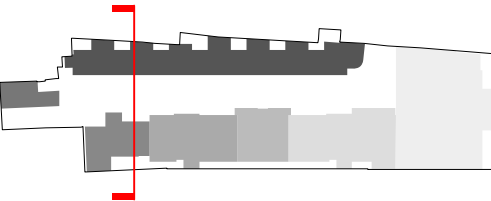
Lightweight, complementary upper storeys
Architect: Duggan Morris



Subservient mass to the rear of an existing terrace
Architect: Peter Barber

NOTES

1. Ibstock Cooksbridge Yellow clamp stock brick, running bond with flush mortar joints, Euromix masonry mortar 'natural'
2. VM Zinc Pigmento standing seam cladding 'Autumn Red'
3. Fibre C Concrete canopy 'Sahara'
4. VM Zinc Pigmento standing seam cladding panel 'Autumn Red'
5. Woodside Portland Stone coping, grey
6. Composite Timber / Aluminium thermally broken double glazed windows and doors, Ral colour 809g
7. Powder coated steel balcony / balustrade, Ral colour 809g
8. Bio-Diverse green roof
9. Boundary wall, Ibstock Cooksbridge Yellow Brick, height varies
10. Raised planting beds
11. Private residential entrance door
12. Communal residential entrance
13. Commercial Bt entrance
14. Bin Store / Recycling louvered door, Ral 809g
15. Aluminium Rain Water Pipes, square profile, Ral 809g to brick areas, Ral to match Zinc cladding in Zinc areas
16. External lighting to Entrance Doors / Amentiy space



D	Standing seam side panels revised	6/7/17
C	General revisions incorporating further coordination	27/2/17
B	Revised in line with design coordination	23/1/16
A	Heights Amended	16/02/15

REV	COMMENTS	DATE	CHK
-----	----------	------	-----

STATUS

PLANNING

Job 277a Grays Inn Road

Title Proposed Section F
Sheet 6 of 10

Date October 2016

Scale 1:200 @ A2

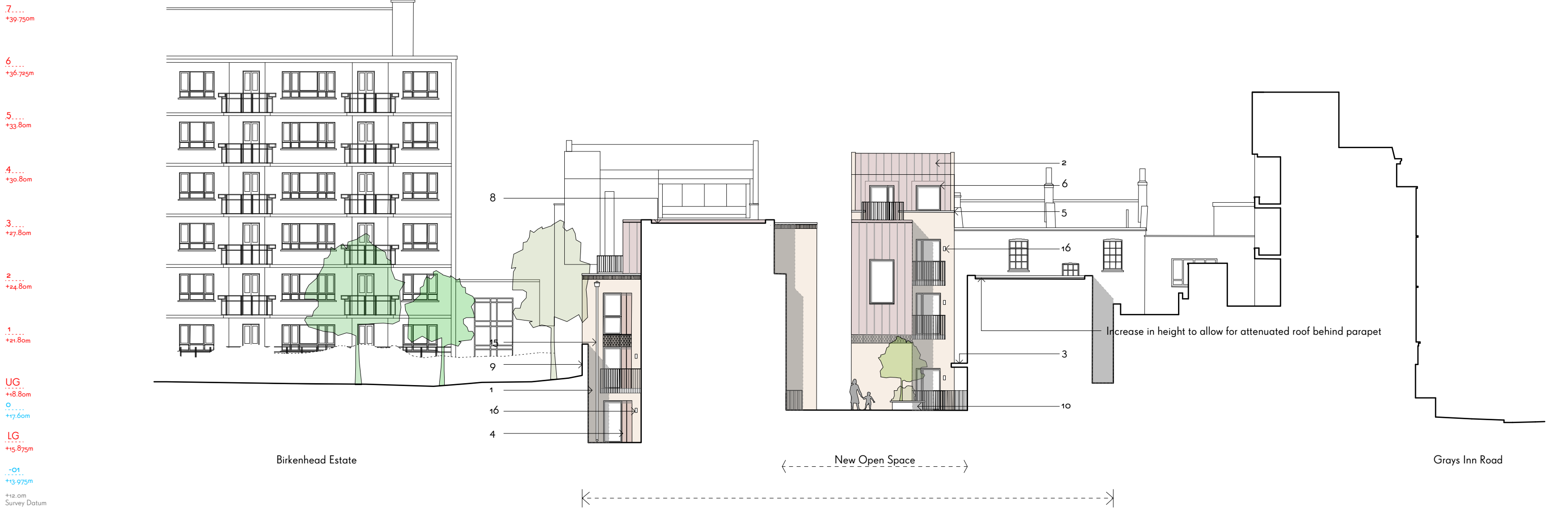
Drawn JY

Client Regal Homes

126-1306

WAUGH THISTLETON
ARCHITECTS

77 LEONARD STREET LONDON EC2A 4QS
+44 (0) 20 7613 5727 WAUGHTHISTLETON.COM



Projecting balconies - Flat steel section balustrades
Architect: Tony Fretton



Private gardens to rear of ground floor dwellings
Architect: FCB Studio



Planting and seating to external open space

This drawing is prepared for the purposes of a planning application and to show design intent only. The information contained herein must not be used for costing, construction, engineering or any other purposes without agreement in writing from Waugh Thistleton Architects Ltd.

NOTES

1. Ibstock Cooksbridge Yellow clamp stock brick, running bond with flush mortar joints, Euromix masonry mortar 'natural'
2. VM Zinc Pigmento standing seam cladding 'Autumn Red'
3. Fibre C Concrete canopy 'Sahara'
4. VM Zinc Pigmento standing seam cladding panel 'Autumn Red'
5. Woodside Portland Stone coping, grey
6. Composite Timber / Aluminium thermally broken double glazed windows and doors, Ral colour 809g
7. Powder coated steel balcony / balustrade, Ral colour 809g
8. Bio-Diverse green roof
9. Boundary wall, Ibstock Cooksbridge Yellow Brick, height varies
10. Raised planting beds
11. Private residential entrance door
12. Communal residential entrance
13. Commerical Bt entrance
14. Bin Store / Recycling louvered door, Ral 809g
15. Aluminium Rain Water Pipes, square profile, Ral 809g to brick areas, Ral to match Zinc cladding in Zinc areas
16. External lighting to Entrance Doors / Amentiy space



St Chad Street



C	General revisions incorporating further coordination	27/2/17
B	Revised in line with design coordination	23/1/16
A	Heights Amended	16/02/15

REV	COMMENTS	DATE	CHK
-----	----------	------	-----

STATUS

PLANNING

Job 277a Grays Inn Road

Title Proposed North Elevation
Sheet 7 of 10

Date October 2016

Scale 1:200 @ A2

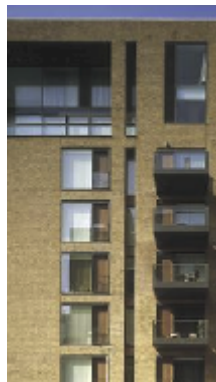
Drawn JY

Client Regal Homes

WAUGH THISTLETON
ARCHITECTS

77 LEONARD STREET LONDON EC2A 4QS
+44 (0) 20 7613 5727 WAUGHTHISTLETON.COM

126-1401



Windows and balconies with integral screening
Architect: Allies & Morrison



Varying reveals to articulate forms and massing
Architect: Panter Hudspith



Upper storey flats glazed to the north and south with private terraces



Lightweight, complementary upper storeys
Architect: Duggan Morris



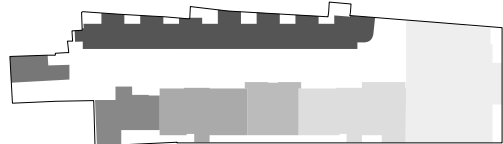
Projecting balconies - Flat steel section balustrades
Architect: Tony Fretton

This drawing is prepared for the purposes of a planning application and to show design intent only. The information contained herein must not be used for costing, construction, engineering or any other purposes without agreement in writing from Waugh Thistleton Architects Ltd.

NOTES

1. Ibstock Cooksbridge Yellow clamp stock brick, running bond with flush mortar joints
2. VM Zinc Pigmento standing seam cladding 'Autumn Red'
3. Fibre C Concrete canopy 'Sahara'
4. VM Zinc Pigmento standing seam cladding panel 'Autumn Red'
5. Woodside Portland Stone coping, grey
6. Composite Timber / Aluminium thermally broken double glazed windows and doors, Ral colour Borg
7. Powder coated steel balcony / balustrade, Ral colour Borg
8. Bio-Diverse green roof
9. Boundary wall, Ibstock Cooksbridge Yellow Brick, height varies

10. Raised planting beds
11. Private residential entrance door
12. Communal residential entrance
13. Commerical Bt entrance
14. Bin Store / Recycling louvered door, Ral Borg
15. Aluminium Rain Water Pipes, square profile, Ral Borg to brick areas, Ral to match Zinc cladding in Zinc areas
16. External lighting to Entrance Doors / Amentiy space



REV	NOTES	DATE	CHK
A	Heights Amended	16/02/15	
B	Flue Added	16/02/15	
C	Revised in line with design coordination	23/01/16	
D	General revisions incorporating further coordination	27/2/17	
E	Metalwork added to boundary wall and standing seam side panels revised	6/7/17	

**WAUGH
THISTLETON
ARCHITECTS**

77 LEONARD STREET LONDON EC2A 4QS
+44(0) 2076135727 WAUGHTHISTLETON.COM

STATUS

PLANNING

Job Title 277a Grays Inn Road
Proposed West Elevation
Sheet 8 of 10
Date October 2016
Scale 1:200 @ A2
Drawn JY

126-1404



Contemporary terrace/courtyard housing
Architect: FCB Studios



Private rear amenity space
Architect: FCB Studio



Subservient mass to the rear of an existing terrace
Architect: Peter Barber



Large high level windows to maximise
daylight penetration
Architect: Peter Barber

This drawing is prepared for the purposes of a planning application and to show design intent only. The information contained herein must not be used for costing, construction, engineering or any other purposes without agreement in writing from Waugh Thistleton Architects Ltd.

NOTES

1. Ilstock Cooksbridge Yellow clamp stock brick, running bond with flush mortar joints
2. VM Zinc Pigmento standing seam cladding 'Autumn Red'
3. Fibre C Concrete canopy 'Sahara'
4. VM Zinc Pigmento standing seam cladding panel 'Autumn Red'
5. Woodside Portland Stone coping, grey
6. Composite Timber / Aluminium thermally broken double glazed windows and doors, Ral colour Borg
7. Powder coated steel balcony / balustrade, Ral colour Borg
8. Bio-Diverse green roof
9. Boundary wall, Ilstock Cooksbridge Yellow Brick, height varies
10. Raised planting beds
11. Private residential entrance door
12. Communal residential entrance
13. Commerical Bt entrance
14. Bin Store / Recycling louvered door, Ral Borg
15. Aluminium Rain Water Pipes, square profile, Ral Borg to brick areas, Ral to match Zinc cladding in Zinc areas
16. External lighting to Entrance Doors / Amenity space



REV	NOTES	DATE	CHK
A	Height Amended	16/02/15	
B	Height of existing included	15/04/15	
C	Revised in line with design coordination	23/11/16	
D	General revisions incorporating further coordination	27/12/17	
E	Standing seam side panels revised and substation metalwork indicated	01/11/17	

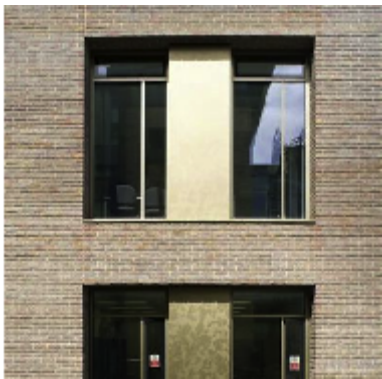
**WAUGH
THISTLETON
ARCHITECTS**
77 LEONARD STREET LONDON EC2A 4QS
+44(0) 2076135727 WAUGHTHISTLETON.COM

STATUS	
PLANNING	
Job Title	277a Grays Inn Road Proposed West Elevation Sheet 9 of 10
Date	October 2016
Scale	1:200 @ A2
Drawn	JY

126-1405



Mixed stock facing brick - contrasting tones
Architect: PRP Architects



Deep brick reveals with aluminium windows & panels
Architect: Hawkins/Brown



Varying reveals to articulate forms and massing
Architect: Panter Hudspeth



Stepping & recessed massing
Architect: Allies & Morrison



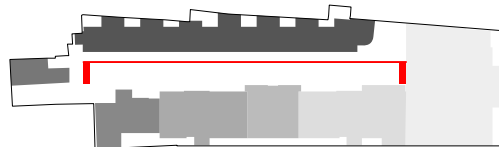
Lightweight, complementary upper storeys
Architect: Duggan Morris

This drawing is prepared for the purposes of a planning application and to show design intent only. The information contained herein must not be used for costing, construction, engineering or any other purposes without agreement in writing from Waugh Thistleton Architects Ltd.

NOTES

1. Ibstock Cooksbridge Yellow clump stock brick, running bond with flush mortar joints
2. VM Zinc Pigmento standing seam cladding 'Autumn Red'
3. Fibre C Concrete canopy 'Sahara'
4. VM Zinc Pigmento standing seam cladding panel 'Autumn Red'
5. Woodside Portland Stone coping, grey
6. Composite Timber / Aluminium thermally broken double glazed windows and doors, Ral colour Borg
7. Powder coated steel balcony / balustrade, Ral colour Borg
8. Bio-Diverse green roof
9. Boundary wall, Ibstock Cooksbridge Yellow Brick, height varies

10. Raised planting beds
11. Private residential entrance door
12. Communal residential entrance
13. Commercial B entrance
14. Bin Store / Recycling louvered door, Ral Borg
15. Aluminium Rain Water Pipes, square profile, Ral Borg to brick areas, Ral to match Zinc cladding in Zinc areas
16. External lighting to Entrance Doors / Amenity space



REV	NOTES
A	Height Amended
B	Height of existing included
C	Revised in line with design coordination
D	General revisions incorporating further coordination
E	Standing seam side panels revised

DATE
16/02/15
15/04/15
23/01/16
27/2/17
6/7/17

CHK

WAUGH
THISTLETON
ARCHITECTS

77 LEONARD STREET LONDON EC2A 4QS
+44(0) 2076135727 WAUGHTHISTLETON.COM

STATUS

PLANNING

Job Title 277a Grays Inn Road
Proposed East Elevation
Sheet 10 of 10
Date October 2016
Scale 1:200 @ A2
Drawn JY

126-1406