

NOTES
DO NOT SCALE FROM THIS DRAWING.
CONTRACTOR TO CHECK ALL DIMENSIONS ON SITE.
ANY DISCREPANCIES TO BE REPORTED TO THE ARCHITECT IMMEDIATELY.

COPYRIGHT RICK MATHER ARCHITECTS LLP ©

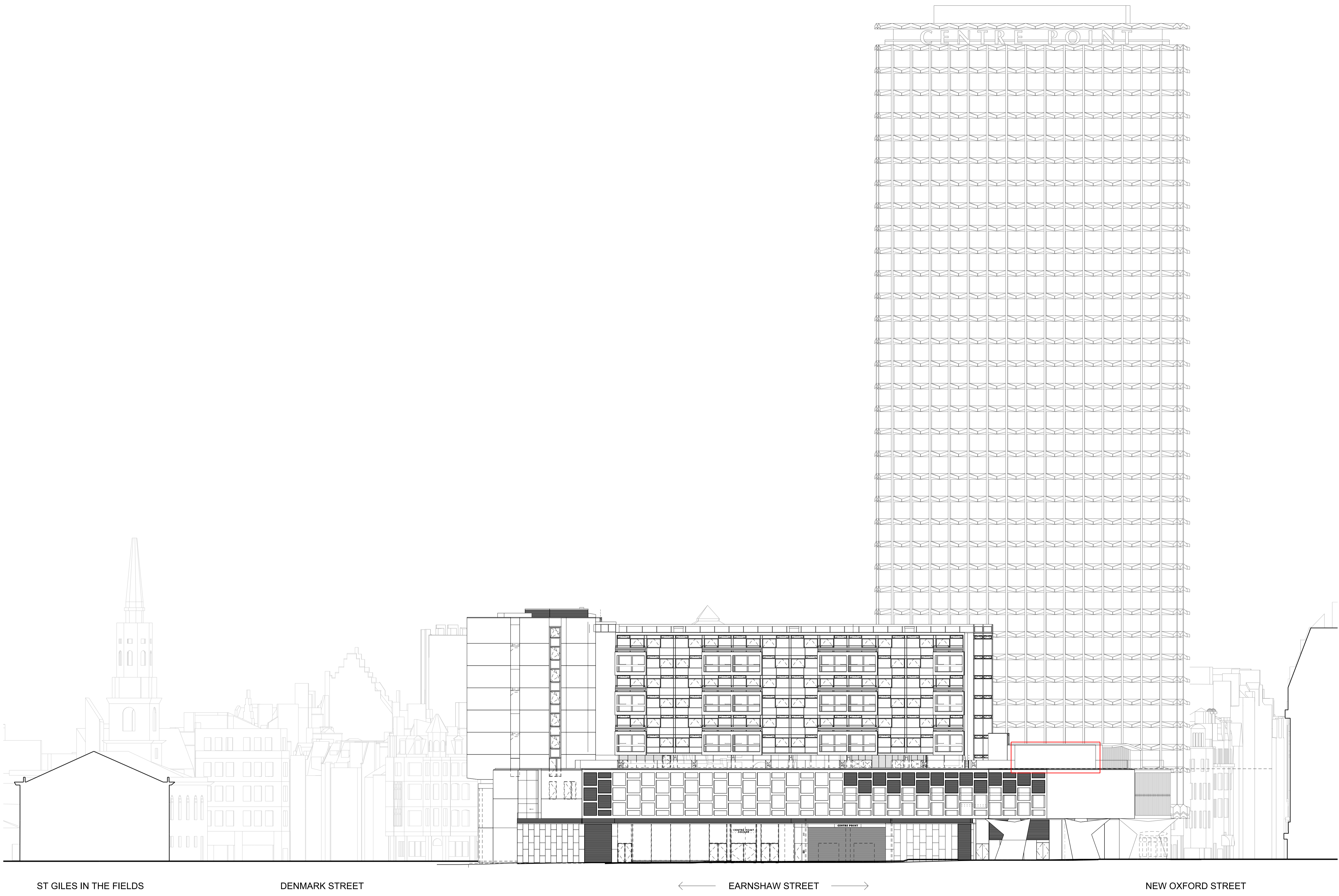


Note: this drawing shows the consented proposal.

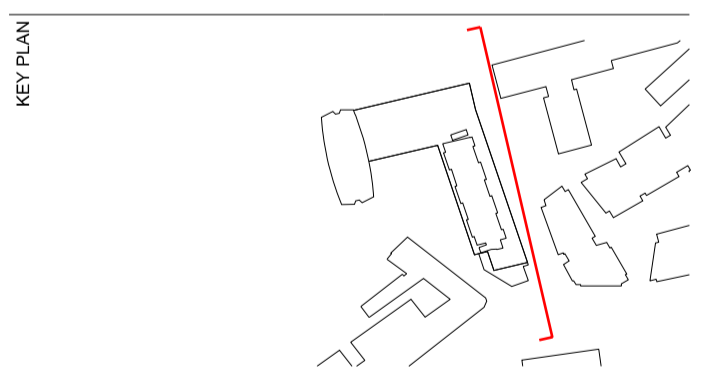
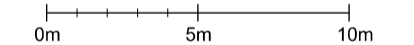
Please refer to the following planning and listed building applications for further detail:

- 2015/5068/P
2013/1957/P
- 2015/5069/L
2013/1961/L

The information outside the red line area may be superseded by more recent applications for discharge of conditions associated with the applications above.



REV	DATE	DESCRIPTION
PL2	13.07.17	RE-ISSUED FOR PLANNING LISTED BUILDING CONSENT
P2	10.07.17	Issued for Comment
PL1	05.06.17	PLANNING
P1	26.05.17	FOR REVIEW & COMMENT



PLANNING

RICK MATHER ARCHITECTS ©
123 Camden High Street London NW1 7JR
T: 020 7284 1727 F: 020 7267 7626
info@rickmather.com www.rickmather.com

JOB
Centre Point Retail Unit R03
101 - 103 New Oxford Street
London, WC1A 1DD

TITLE
CONSENTED ELEVATION
CENTRE POINT HOUSE
EAST (EARNSHAW STREET) ELEVATION

DRAWN	JOB #	DRG #	REV	
KF	645	19023	PL2	
CHECKED	SCALE@A1	SIZE	DATE	REV/DATE
JK	1:250	A1	MAY 17	13.07.17

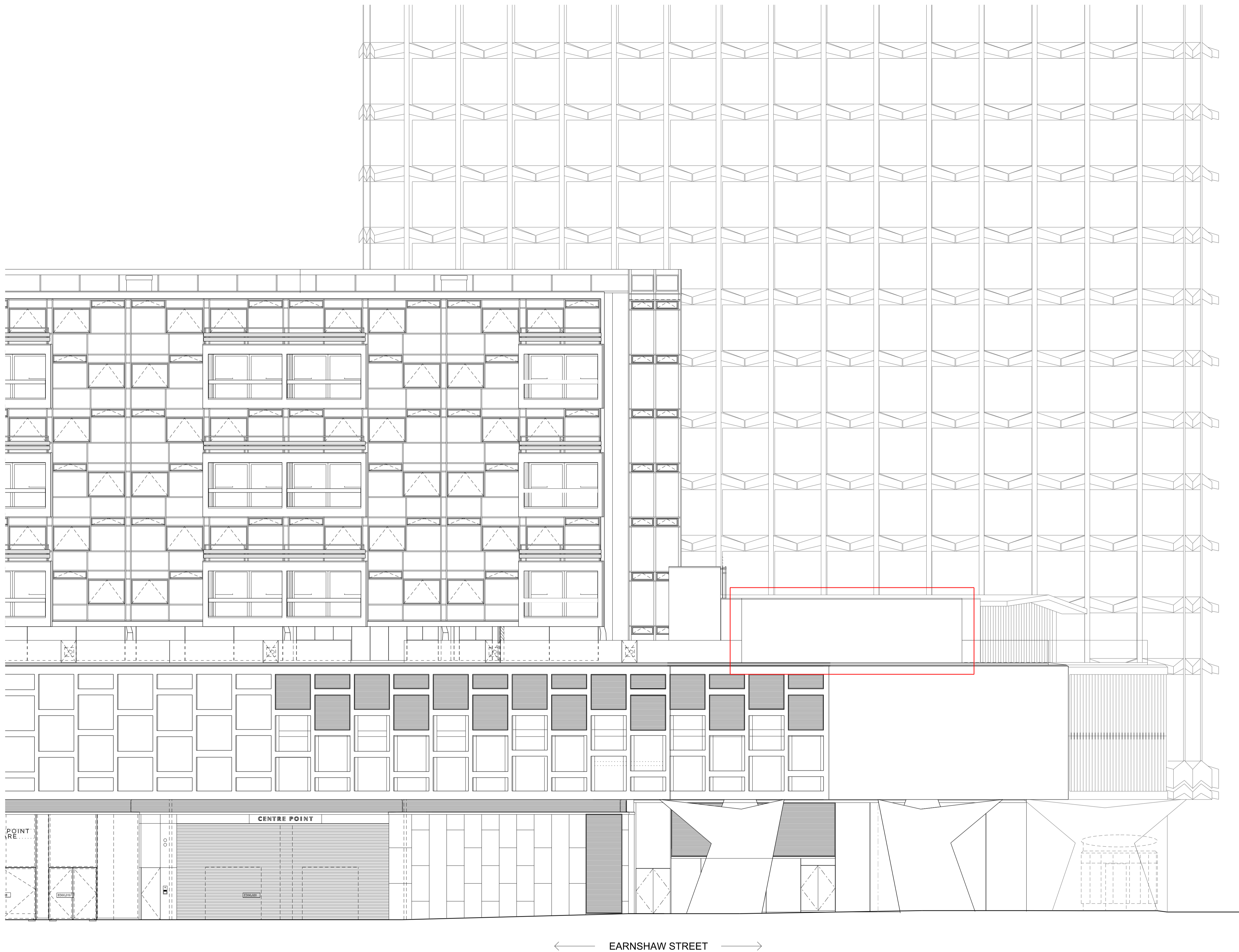
ST GILES IN THE FIELDS

DENMARK STREET

← EARNSHAW STREET →

NEW OXFORD STREET

Note: No changes are proposed to this elevation -
The works associated with this application will have no
effect on the appearance of the east elevation.



NOTES
DO NOT SCALE FROM THIS DRAWING.
CONTRACTOR TO CHECK ALL DIMENSIONS ON SITE.
ANY DISCREPANCIES TO BE REPORTED TO THE ARCHITECT IMMEDIATELY.

COPYRIGHT RICK MATHER ARCHITECTS LLP ©



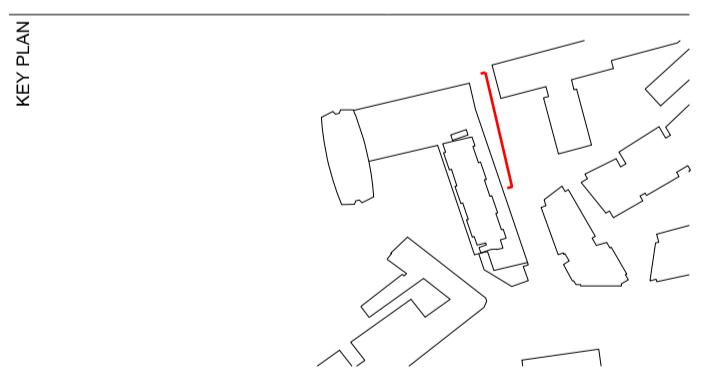
Note: this drawing shows the consented proposal.

Please refer to the following planning and listed building applications for further detail.

- 2015/5069/P
2013/1957/P
- 2015/5069/L
2013/1961/L

The information outside the red line area may be superseded by more recent applications for discharge of conditions associated with the applications above.

REV	DATE	DESCRIPTION
PL2	13.07.17	RE-ISSUED FOR PLANNING LISTED BUILDING CONSENT
P2	10.07.17	Issued for Comment
PL1	05.06.17	PLANNING
P1	26.05.17	FOR REVIEW & COMMENT



PLANNING

RICK MATHER ARCHITECTS ©
123 Camden High Street London NW1 7JR
T: 020 7284 1727 F: 020 7267 7626
info@rickmather.com www.rickmather.com

Centre Point Retail Unit R03
101 - 103 New Oxford Street
London, WC1A 1DD

CONSENTED ELEVATION
EAST ELEVATION

DRAWN	JOB #	DRG #	REV
KF	645	19021	PL2
CHECKED	SCALE@A1	SIZE	DATE
JK	1:100	A1	MAY 17
	1:200	A3	13.07.17

Note: No changes are proposed to this elevation -
The works associated with this application will have no
effect on the appearance of the east elevation.

NOTES
 DO NOT SCALE FROM THIS DRAWING.
 CONTRACTOR TO CHECK ALL DIMENSIONS ON SITE.
 ANY DISCREPANCIES TO BE REPORTED TO THE ARCHITECT IMMEDIATELY.
 THE SURVEY INFORMATION CONTAINED IN THIS DRAWING WAS PROVIDED BY PLOWMAN CRAVEN SURVEY DRAWINGS DEC 2011 - OCT 2012.
 COPYRIGHT RICK MATHER ARCHITECTS LLP ©

AREA KEY

RESIDENTIAL	[Light Blue]
RETAIL	[Yellow]
PLANT	[Green]
CIRCULATION	[Light Grey]
CAR PARK	[Light Blue]
BACK OF HOUSE	[Dark Grey]
OFFICE	[Brown]
RESIDENTIAL AMENITY	[Purple]

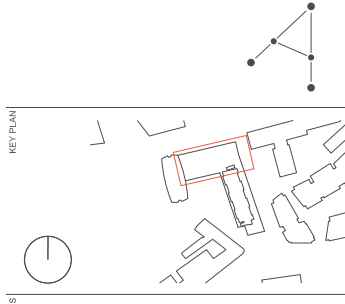
KEY

DEMOLITION	[Diagonal Hatching]
EXISTING STRUCTURE	[Solid Black]
PARTITION	[Solid Grey]
PROPOSED STRUCTURE	[Diagonal Hatching]

- All ceilings removed
- Glazed wall and spandrels removed
- Louvre wall removed
- Slab removed

REVISIONS

REV	DATE	DESCRIPTION
PL1	01.04.13	PLANNING ISSUE



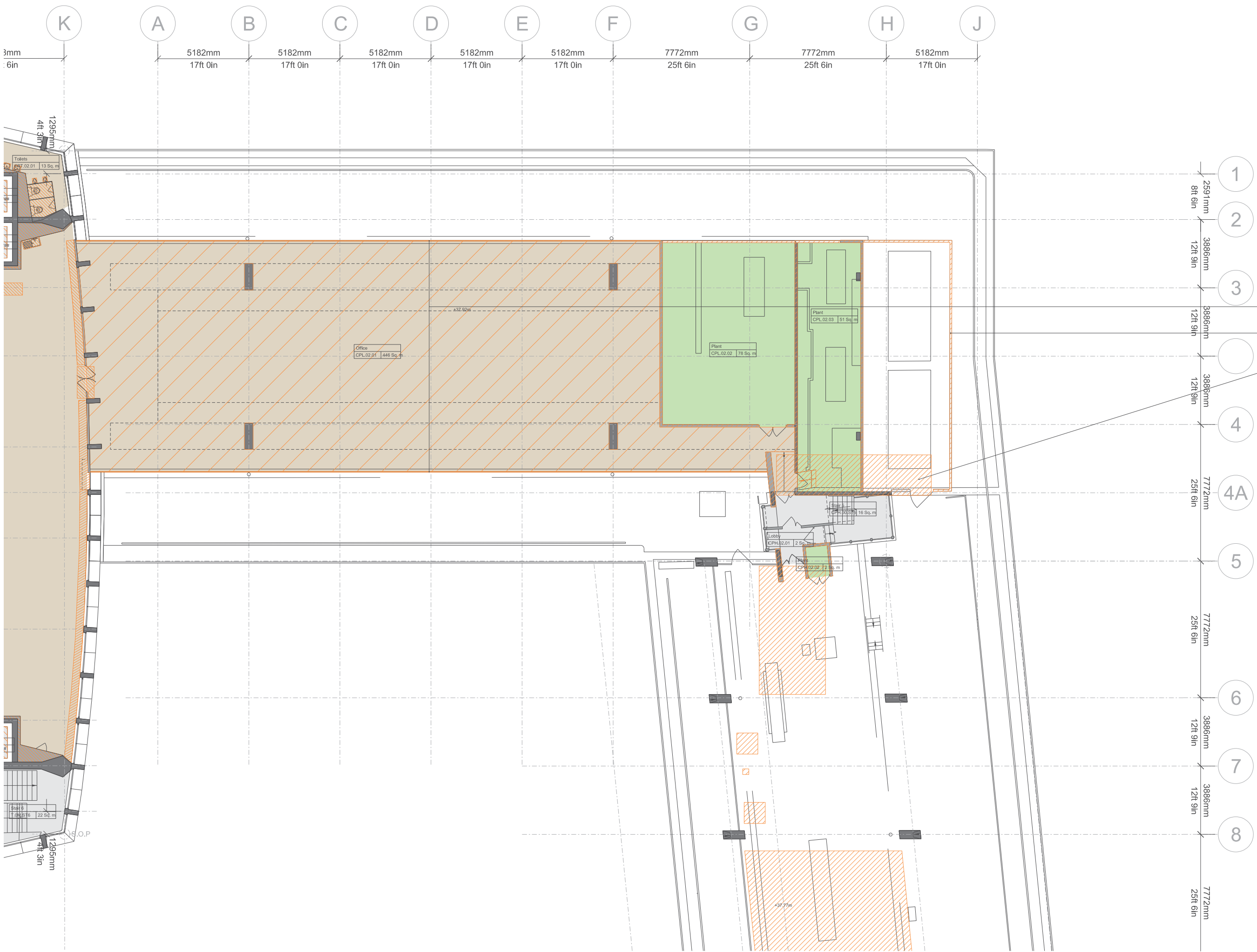
STATUS
PLANNING

RICK MATHER ARCHITECTS ©
 123 Camden High Street London NW1 7JR
 T: 020 7284 1727 F: 020 7287 7528
 info@rickmather.com www.rickmather.com

Centre Point
 101-103 New Oxford Street
 London, WC1A 1DD

TITLE
EXISTING FLOOR PLAN
 SECOND FLOOR PLAN
 CENTRE POINT LINK

DRAWN	DMcC	# 552	DWG # 19330-CPL	REV PL1
CHECKED	GM	SCALE 1:100	SER A1	DATE APR 13
				REV DATE 01.04.13



3mm
 .6in

1295mm
 4ft 3in

Toilets
 CPL.02.01 13 Sq. m

Office
 CPL.02.01 146 Sq. m

Plant
 CPL.02.02 78 Sq. m

Plant
 CPL.02.03 51 Sq. m

Lobby
 CPL.02.01 2 Sq. m

Stair
 CPL.02.01 16 Sq. m

1295mm
 4ft 3in

1295mm
 4ft 3in

1295mm
 4ft 3in

1295mm
 4ft 3in

1295mm
 4ft 3in

1295mm
 4ft 3in

1295mm
 4ft 3in

1295mm
 4ft 3in

1295mm
 4ft 3in

1295mm
 4ft 3in

1295mm
 4ft 3in

1295mm
 4ft 3in

1295mm
 4ft 3in

1295mm
 4ft 3in

1295mm
 4ft 3in

1295mm
 4ft 3in

1295mm
 4ft 3in

1295mm
 4ft 3in

1295mm
 4ft 3in

1295mm
 4ft 3in

1295mm
 4ft 3in

1295mm
 4ft 3in

1295mm
 4ft 3in

1295mm
 4ft 3in

1295mm
 4ft 3in

1295mm
 4ft 3in

1295mm
 4ft 3in

1295mm
 4ft 3in

1295mm
 4ft 3in

1295mm
 4ft 3in

1295mm
 4ft 3in

1295mm
 4ft 3in

1295mm
 4ft 3in

1295mm
 4ft 3in

1295mm
 4ft 3in

1295mm
 4ft 3in

1295mm
 4ft 3in

1295mm
 4ft 3in

1295mm
 4ft 3in

1295mm
 4ft 3in

1295mm
 4ft 3in

1295mm
 4ft 3in

1295mm
 4ft 3in

1295mm
 4ft 3in

1295mm
 4ft 3in

1295mm
 4ft 3in

1295mm
 4ft 3in

1295mm
 4ft 3in

1295mm
 4ft 3in

1295mm
 4ft 3in

1295mm
 4ft 3in

1295mm
 4ft 3in

1295mm
 4ft 3in

1295mm
 4ft 3in

1295mm
 4ft 3in

1295mm
 4ft 3in

1295mm
 4ft 3in

1295mm
 4ft 3in

1295mm
 4ft 3in

1295mm
 4ft 3in

1295mm
 4ft 3in

1295mm
 4ft 3in

1295mm
 4ft 3in

1295mm
 4ft 3in

1295mm
 4ft 3in

1295mm
 4ft 3in

1295mm
 4ft 3in

1295mm
 4ft 3in

1295mm
 4ft 3in

1295mm
 4ft 3in

1295mm
 4ft 3in

1295mm
 4ft 3in

1295mm
 4ft 3in

1295mm
 4ft 3in

1295mm
 4ft 3in

1295mm
 4ft 3in

1295mm
 4ft 3in

1295mm
 4ft 3in

1295mm
 4ft 3in

1295mm
 4ft 3in

1295mm
 4ft 3in

1295mm
 4ft 3in

1295mm
 4ft 3in

1295mm
 4ft 3in

1295mm
 4ft 3in

1295mm
 4ft 3in

1295mm
 4ft 3in

1295mm
 4ft 3in

1295mm
 4ft 3in

1295mm
 4ft 3in

1295mm
 4ft 3in

1295mm
 4ft 3in

1295mm
 4ft 3in

1295mm
 4ft 3in

1295mm
 4ft 3in

1295mm
 4ft 3in

1295mm
 4ft 3in

1295mm
 4ft 3in

1295mm
 4ft 3in

1295mm
 4ft 3in

1295mm
 4ft 3in

1295mm
 4ft 3in

1295mm
 4ft 3in

1295mm
 4ft 3in

1295mm
 4ft 3in

1295mm
 4ft 3in

1295mm
 4ft 3in

1295mm
 4ft 3in

1295mm
 4ft 3in

1295mm
 4ft 3in

1295mm
 4ft 3in

1295mm
 4ft 3in

1295mm
 4ft 3in

1295mm
 4ft 3in

1295mm
 4ft 3in

1295mm
 4ft 3in

1295mm
 4ft 3in

1295mm
 4ft 3in

1295mm
 4ft 3in

1295mm
 4ft 3in

1295mm
 4ft 3in

1295mm
 4ft 3in

1295mm
 4ft 3in

1295mm
 4ft 3in

1295mm
 4ft 3in

1295mm
 4ft 3in

1295mm
 4ft 3in

1295mm
 4ft 3in

1295mm
 4ft 3in

1295mm
 4ft 3in

1295mm
 4ft 3in

1295mm
 4ft 3in

1295mm
 4ft 3in

1295mm
 4ft 3in

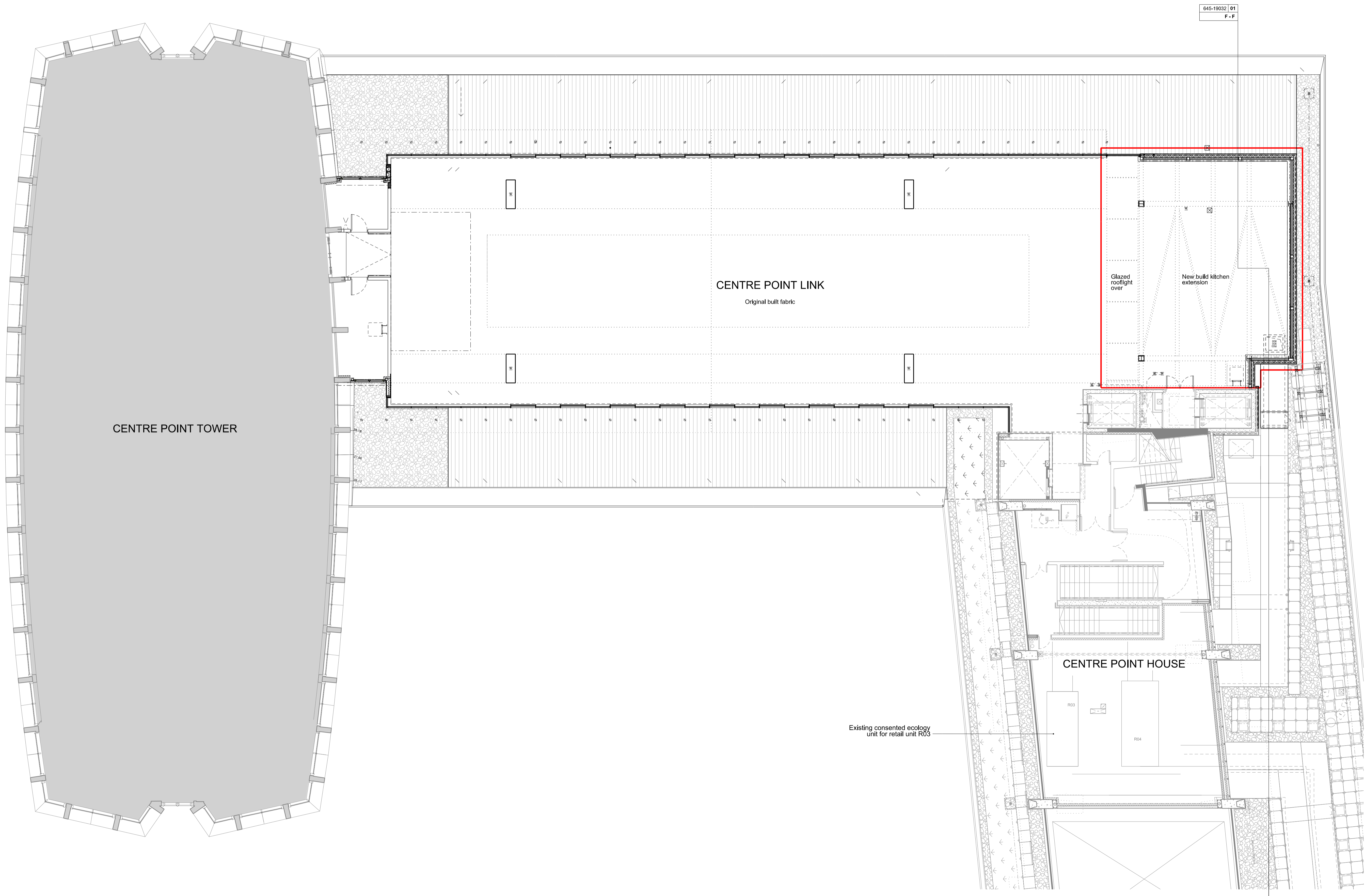
1295mm
 4ft 3in

NOTES
 DO NOT SCALE FROM THIS DRAWING.
 CONTRACTOR TO CHECK ALL DIMENSIONS ON SITE.
 ANY DISCREPANCIES TO BE REPORTED TO THE ARCHITECT IMMEDIATELY.

COPYRIGHT RICK MATHER ARCHITECTS LLP ©

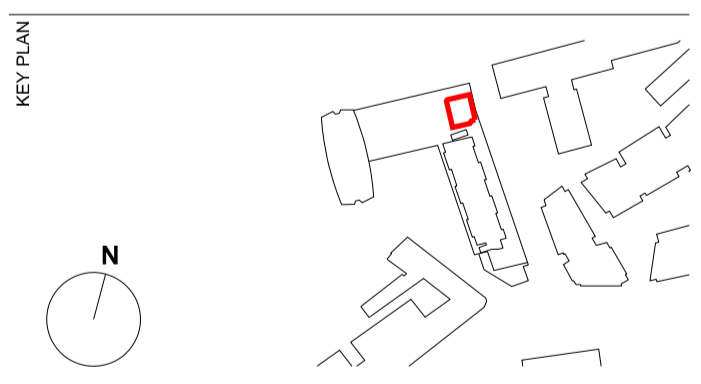
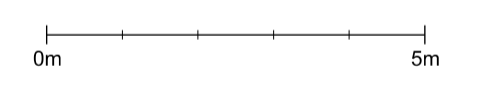
APPLICATION BOUNDARY

Construction details are indicative only.



REVISIONS

REV	DATE	DESCRIPTION
PL2	13.07.17	RE-ISSUED FOR PLANNING LISTED BUILDING CONSENT
P2	10.07.17	Issued for Comment
PL1A	08.06.17	PLANNING
PL1	05.06.17	Issued for comment
P1	26.05.17	FOR REVIEW & COMMENT



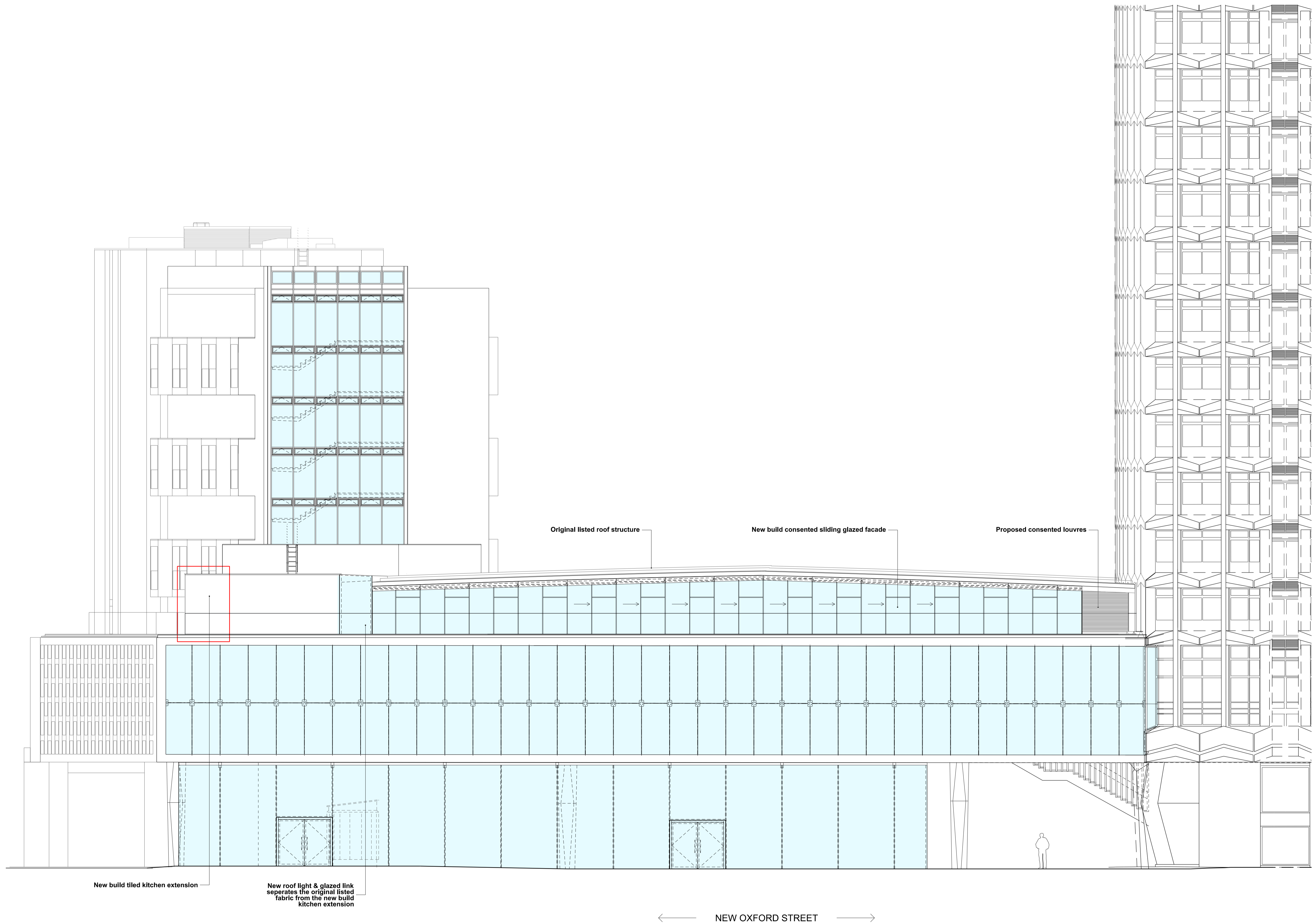
STATUS
PLANNING

RICK MATHER ARCHITECTS ©
 123 Camden High Street London NW1 7JR
 T: 020 7284 1727 F: 020 7287 7626
 info@rickmather.com www.rickmather.com

JOB
Centre Point Retail Unit R03
 101 - 103 New Oxford Street
 London, WC1A 1DD

TITLE
CONSENTED PLAN
 SECOND FLOOR

DRAWN	JOB #	DRG #	REV		
KF	645	19010	PL2		
CHECKED	SCALE@A1	SIZE	DATE	REV/DATE	REV
JK	1:100	A1	MAY 17	13.07.17	

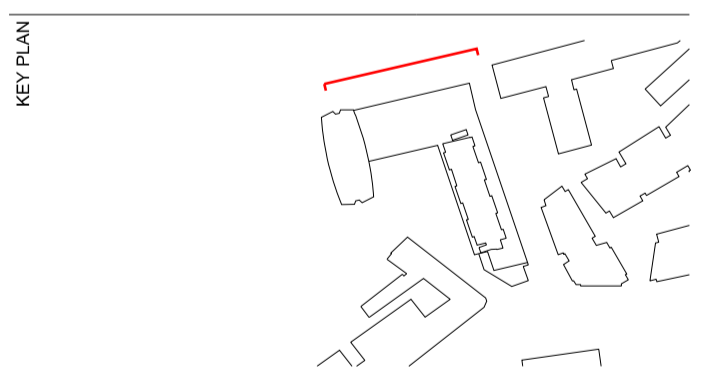
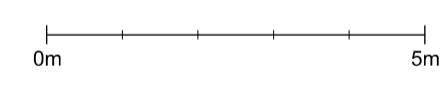


NOTES
 DO NOT SCALE FROM THIS DRAWING.
 CONTRACTOR TO CHECK ALL DIMENSIONS ON SITE.
 ANY DISCREPANCIES TO BE REPORTED TO THE ARCHITECT IMMEDIATELY.
 COPYRIGHT RICK MATHER ARCHITECTS LLP ©



REVISIONS

REV	DATE	DESCRIPTION
PL1	05.06.17	PLANNING
P1	26.05.17	FOR REVIEW & COMMENT



STATUS
PLANNING

RICK MATHER ARCHITECTS ©
 123 Camden High Street London NW1 7JR
 T: 020 7284 1727 F: 020 7267 7626
 info@rickmather.com www.rickmather.com

JOB
Centre Point Retail Unit R03
 101 - 103 New Oxford Street
 London, WC1A 1DD

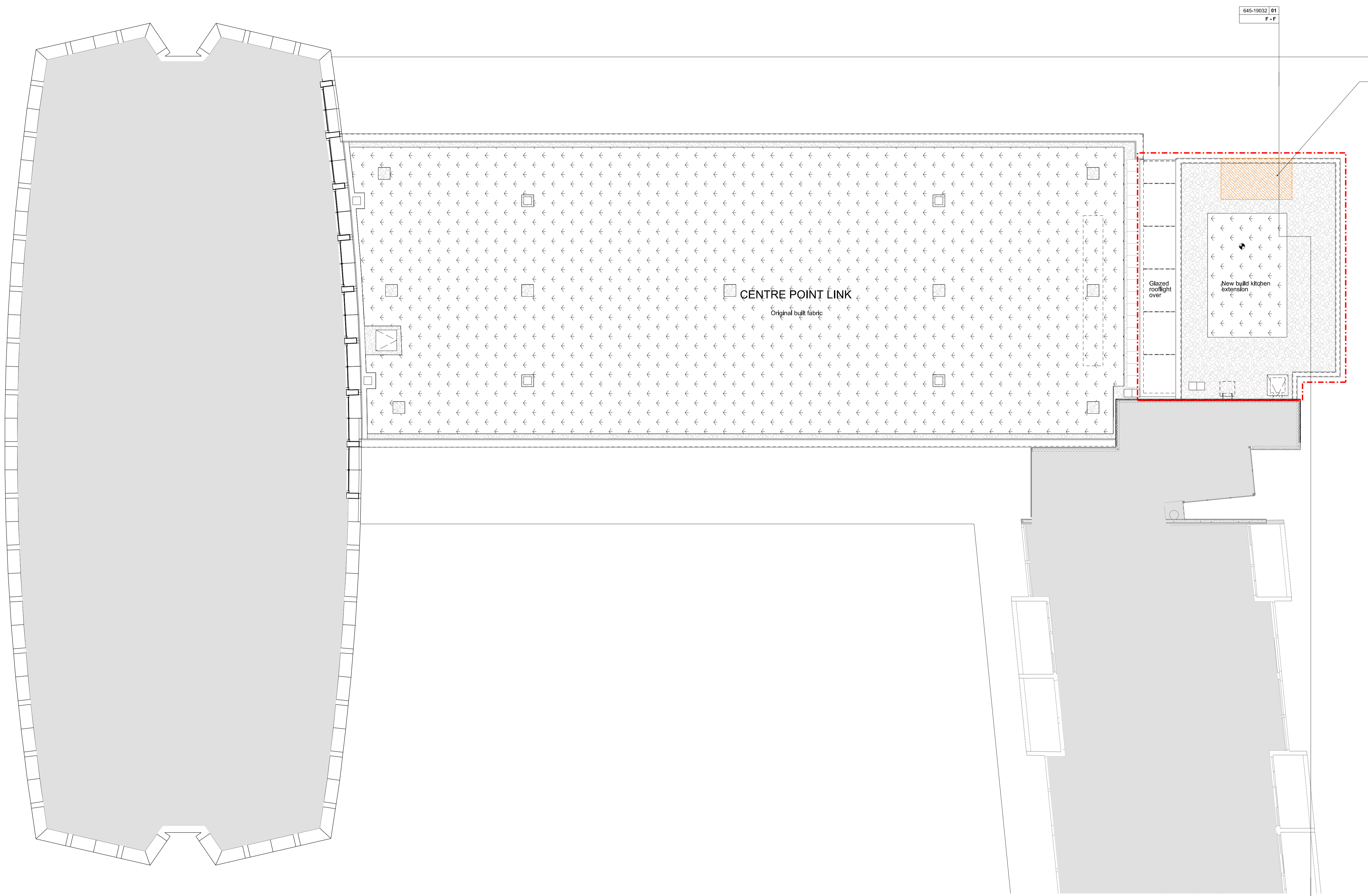
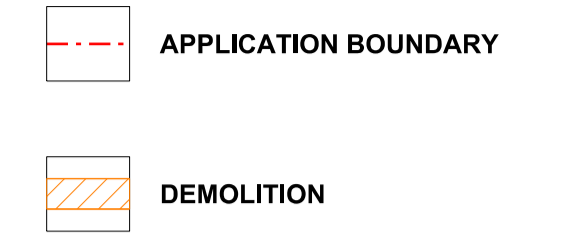
TITLE
CONSENTED ELEVATIONS
 NORTH ELEVATION
 NEW OXFORD STREET

DRAWN	KF	JOB #	645	DRG #	19024	REV	PL1
CHECKED	JK	SCALE@A1	1:100	SIZE	A1	DATE	MAY 17
						REV/DATE	05.06.17

Note: No changes are proposed to this elevation -
 The works associated with this application will have no
 effect on the appearance of the North Elevation.

← NEW OXFORD STREET →

NOTES
 DO NOT SCALE FROM THIS DRAWING.
 CONTRACTOR TO CHECK ALL DIMENSIONS ON SITE.
 ANY DISCREPANCIES TO BE REPORTED TO THE ARCHITECT IMMEDIATELY.
 COPYRIGHT RICK MATHER ARCHITECTS LLP ©

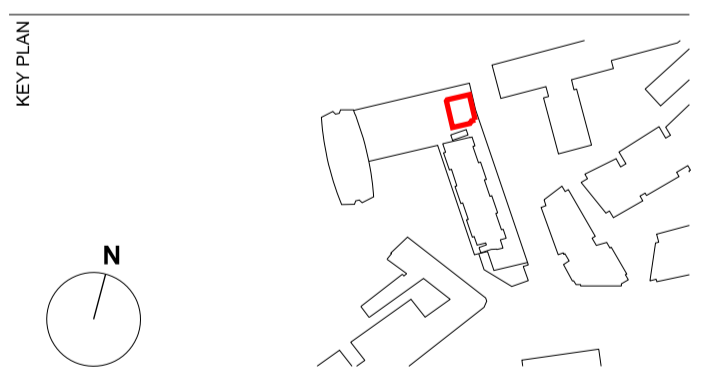
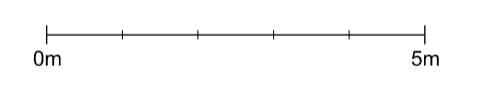


Demolition of new build roof and parapet structure and finishes only

645-19032 | 01
F - F

F - F
645-19032 | 01

REV	DATE	DESCRIPTION
PL2	13.07.17	ISSUED FOR PLANNING/LISTED BUILDING CONSENT
PL1	xx.xx.xx	NOT ISSUED
P1	10.07.17	Issued for Comment



PLANNING

RICK MATHER ARCHITECTS ©
 123 Camden High Street London NW1 7JR
 T: 020 7284 1727 F: 020 7287 7826
 info@rickmather.com www.rickmather.com

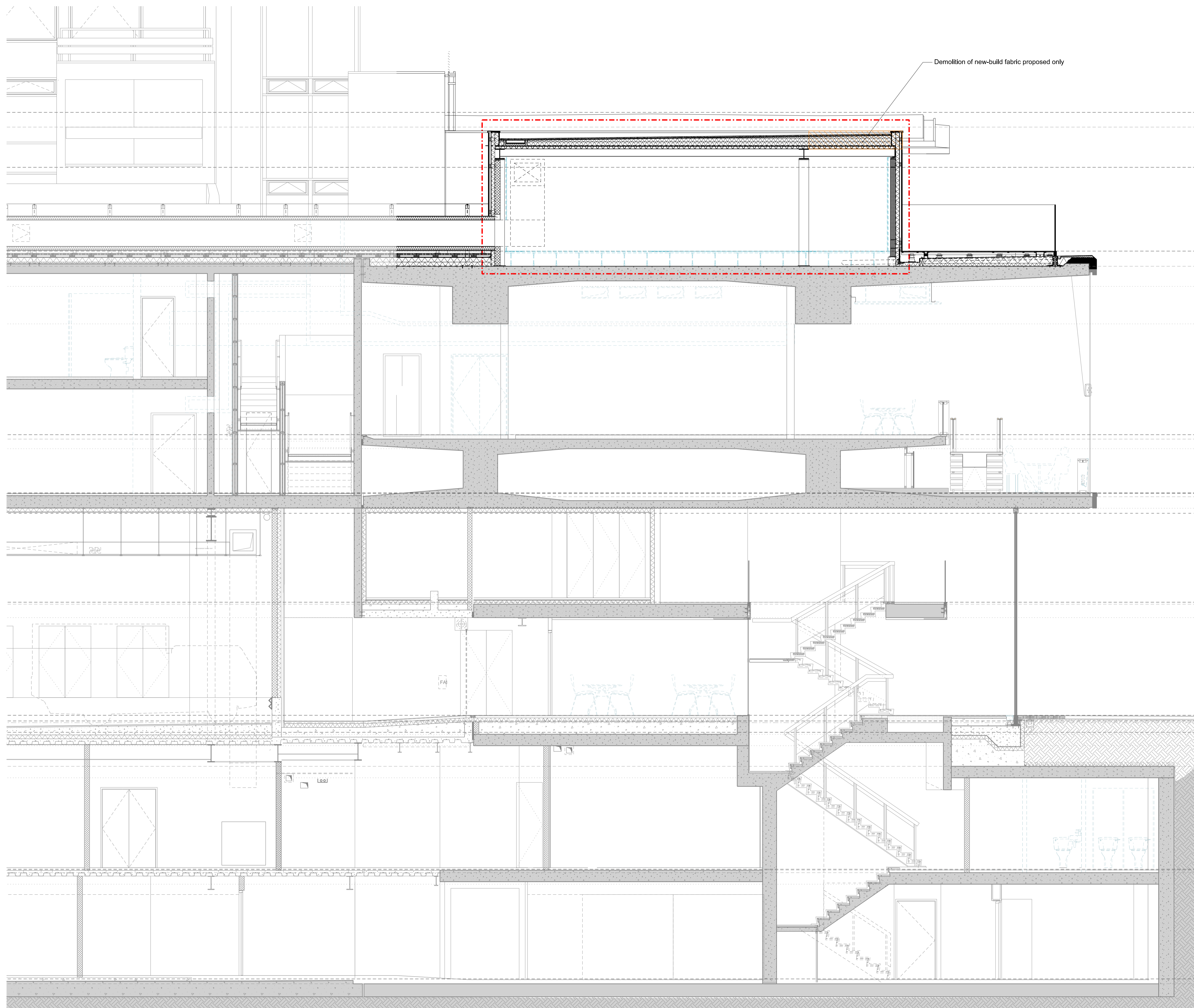
JOB
 Centre Point Retail Unit R03
 101 - 103 New Oxford Street
 London, WC1A 1DD

TITLE
 CONSENTED PLAN
 ROOF PLAN

DRAWN	RM	JOB #	645	DRG #	19011	REV	PL2
CHECKED	JK	SCALE@A1	1:100	SIZE	A1	DATE	MAY 17
		REV/DATE				REV	13.07.17

CENTRE POINT TOWER

CENTRE POINT HOUSE



Section FF (Partial)

01 645-SK-003

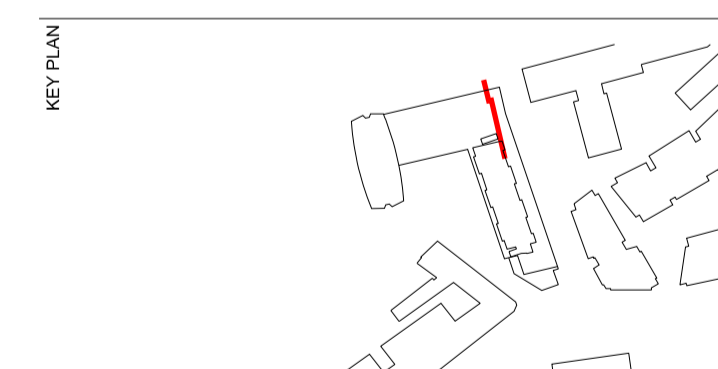
NOTES
DO NOT SCALE FROM THIS DRAWING.
CONTRACTOR TO CHECK ALL DIMENSIONS ON SITE.
ANY DISCREPANCIES TO BE REPORTED TO THE ARCHITECT IMMEDIATELY.
COPYRIGHT RICK MATHER ARCHITECTS LLP ©

- Key
- Application boundary
 - DEMOLITION
 - TENANT FIT OUT
Indicative only

Construction details are indicative only.

REVISIONS	PL2	13.07.17	RE-ISSUED FOR PLANNING LISTED BUILDING CONSENT
	PL1	xx.xx.xx	NOT ISSUED
	P1	10.07.17	Issued for Comment
REV	DATE	DESCRIPTION	

0m 2.5m



STATUS
PLANNING

RICK MATHER ARCHITECTS ©

123 Camden High Street London NW1 7JR
T: 020 7284 1727 F: 020 7287 7826
info@rickmather.com www.rickmather.com

JOB
Centre Point Retail Unit R03
101 - 103 New Oxford Street
London, WC1A 1DD

TITLE
Consented
Section FF

DRAWN	JOB #	DRG #	REV
RM	645	19032	PL2
CHECKED	SCALE@A1	SIZE	DATE
GM	1:50	A1	JULY 17
	1:100	A3	13.07.17