

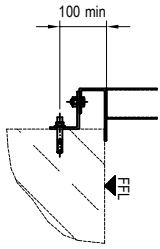
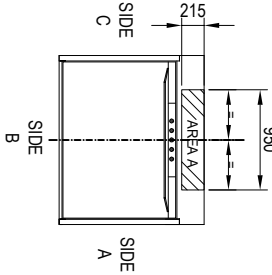
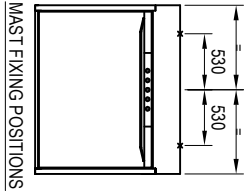
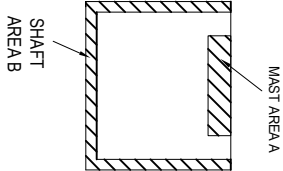
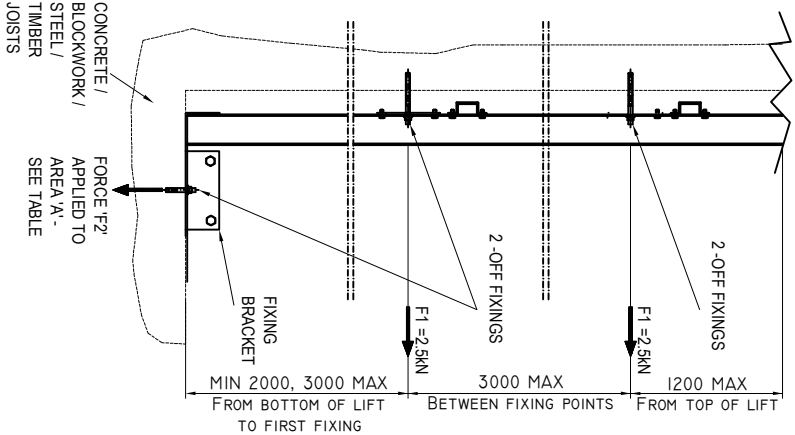
**BUILDING REQUIREMENTS AND
LOADINGS INFORMATION**

FIXING REQUIREMENTS - In line with Gartec document GA138

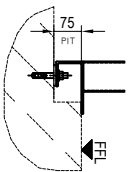
MAXIMUM FORCES BY TRAVEL

TRAVEL (m)	MAST AREA 'A' F2 (kN)	PERIMETER FORCE 'B' (kN)
2	11.3	4.40
3	12.0	5.50
4	12.7	6.60
5	13.5	7.70
6	14.3	8.80
7	14.8	9.90
8	15.6	11.00
9	16.2	12.10
10	17.0	13.20
11	17.7	14.30
12	18.4	15.40
13	19.1	16.50

FIXING POINT	FIXING TYPE	OPTIONAL
MAST INTO CONCRETE / BLOCKWORK	M10 X 68-75mm EXPANDING BOLT OR M10 THREADED BAR WITH WASHERS & NUTS	CHEMICAL COMPOUND
MAST INTO STEEL		
MAST INTO TIMBER	10mm x 100mm COACH SCREWS	WOOD SCREWS
MAST BASE INTO CONCRETE / BLOCKWORK	M10 X 68-75mm EXPANDING BOLT	CHEMICAL COMPOUND
DOOR FRAME BRACKET INTO CONCRETE / BLOCKWORK	M10 X 68-75mm EXPANDING BOLT	CHEMICAL COMPOUND
DOOR FRAME BRACKET INTO STEEL	M10 THREADED BAR WITH WASHERS & NUTS	
DOOR FRAME BRACKET INTO TIMBER	10mm x 100mm COACH SCREWS	WOOD SCREWS



FIXING OF DOOR FRAME
AT UPPER LEVELS



FIXING OF DOOR FRAME AT
GROUND FLOOR LEVEL

CLIENTS PROVISIONS - KEY POINTS (Please refer to GA124c for full list of client provisions)

Please refer to order for site specific details

POWER REQUIRED FOR INSTALLATION

(Please check your order)

400V 3ph + Neutral or

240V 1 ph

20amp MCB (Type C) and a 30mA RCD terminated at a

20amp lockable isolator within 2 metres from electrical cabinet

- If temporary supply a 20kVA generator required
- Start up current = 18amp, Running current = 4.7amp

**9000 SERIES BUILDING
REQUIREMENTS**

Product	9000	Date	19/01/15
Drawn	RC	Scale	NTS
Sheet	A3	Sheet 2 of 2	
Drawing No	99 000	Revision	F

GARTEC
LEADING THE PLATFORM LIFT INDUSTRY