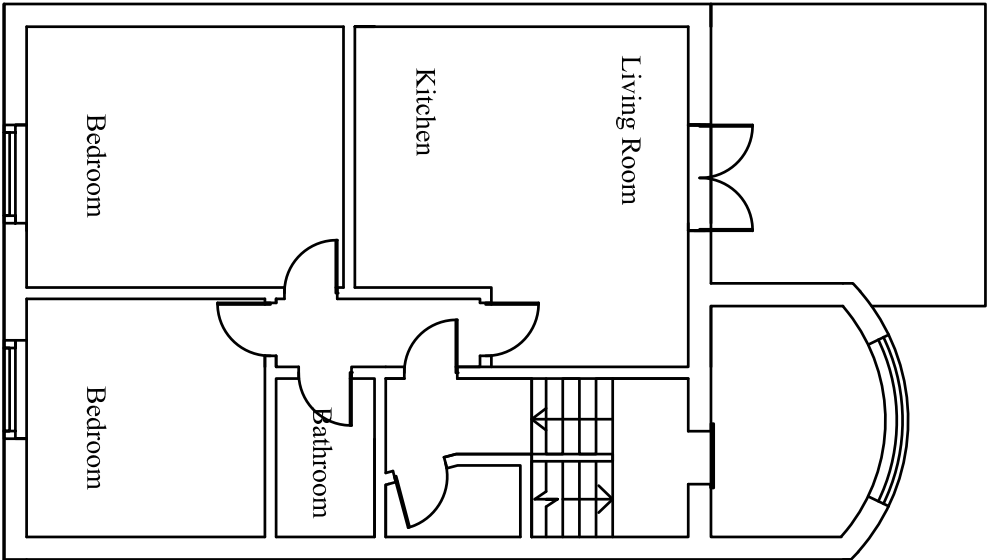
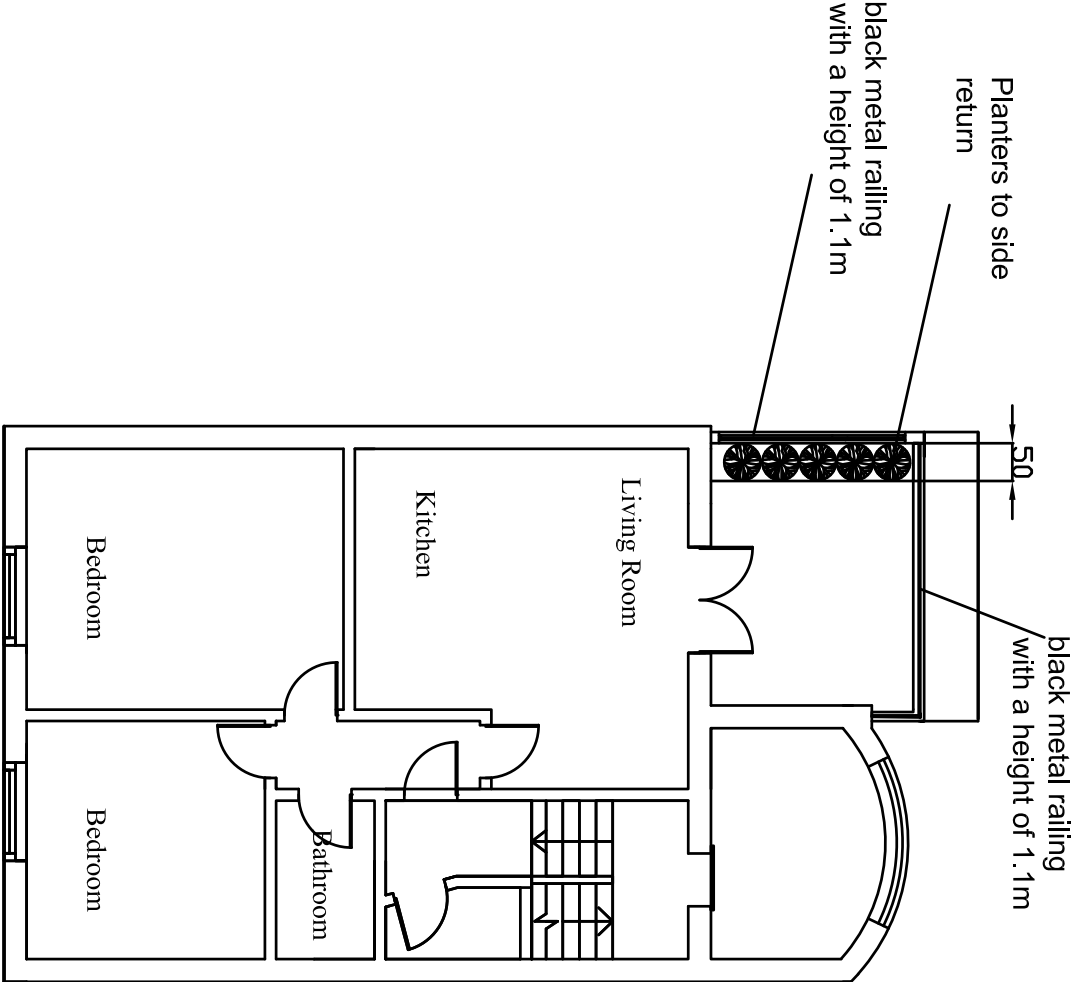


Pre - EXISTING

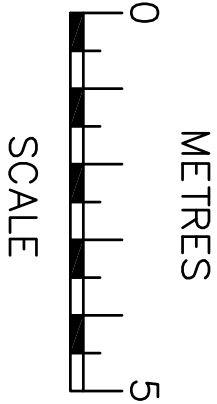


First Floor

PROPOSED



First Floor



<div>Project:</div> <div>17 Dartmouth Park Rd London, NW5 1SU</div>		
<div>Title:</div> <div>Pre-EXISTING &amp; PROPOSED Floor Plans</div>		
<div>Date:</div> <div>May 17</div>		<div>Scale:</div> <div>1:100 @ A3</div>
<div>Dwg. No.</div> <div>DA.17.EX.01</div>		<div>Rev:</div> <div>B</div>
<div><div><div><div></div></div><div>&amp; AJ</div><div>07749708930</div></div><div><div>NOTES</div><div>The contractors are to check all the dimensions, levels, drain runs and general condition of the site before works commence.</div><div>All works are to be carried out in accordance with current Building Regulations, British Standards, Code of Practice and Local Authority Requirements. Do not scale of from this drawing.</div></div></div>		