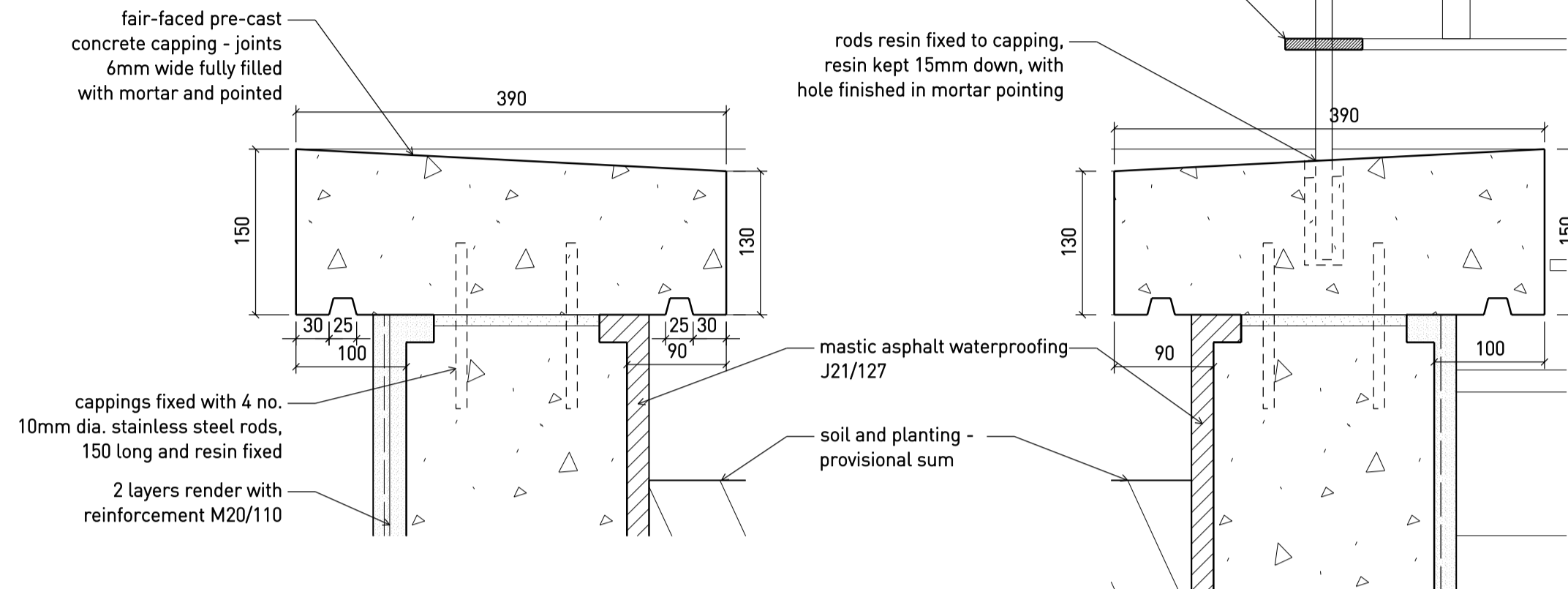
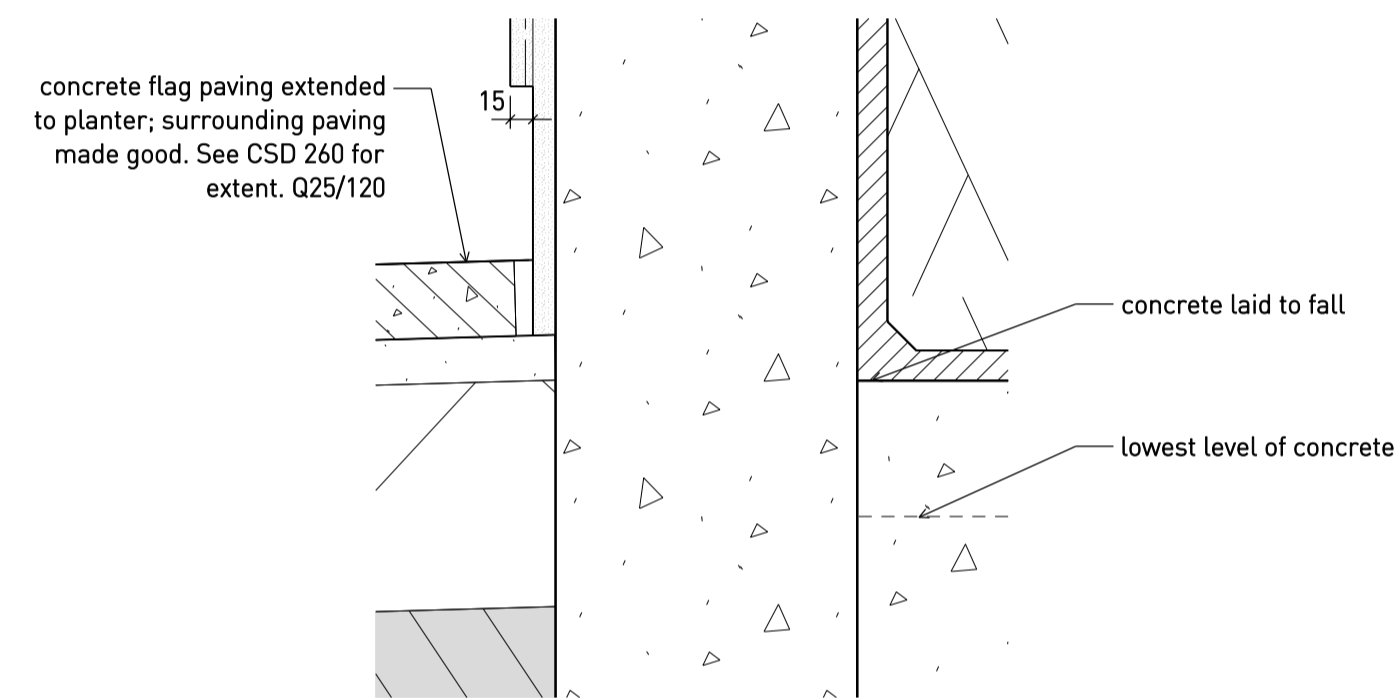


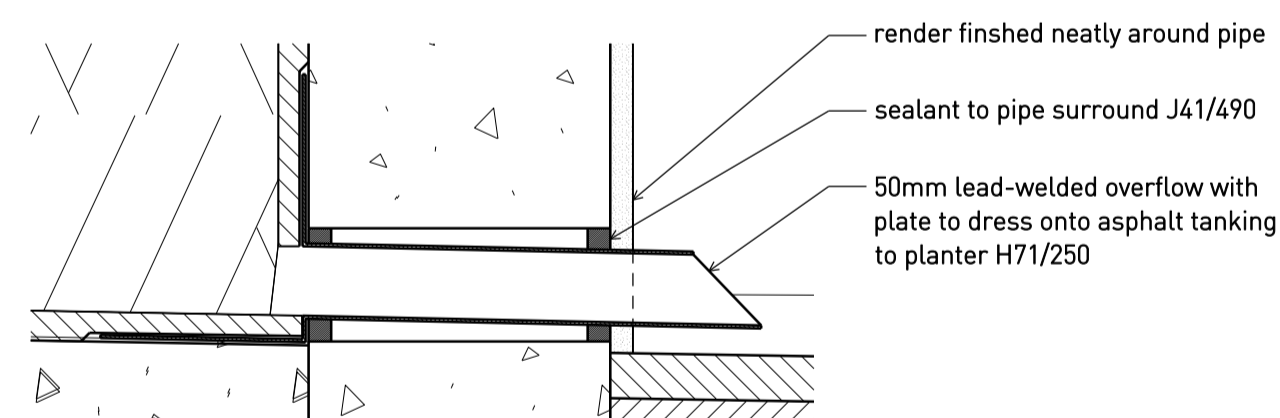
V Retaining Wall Section Detail 1:5



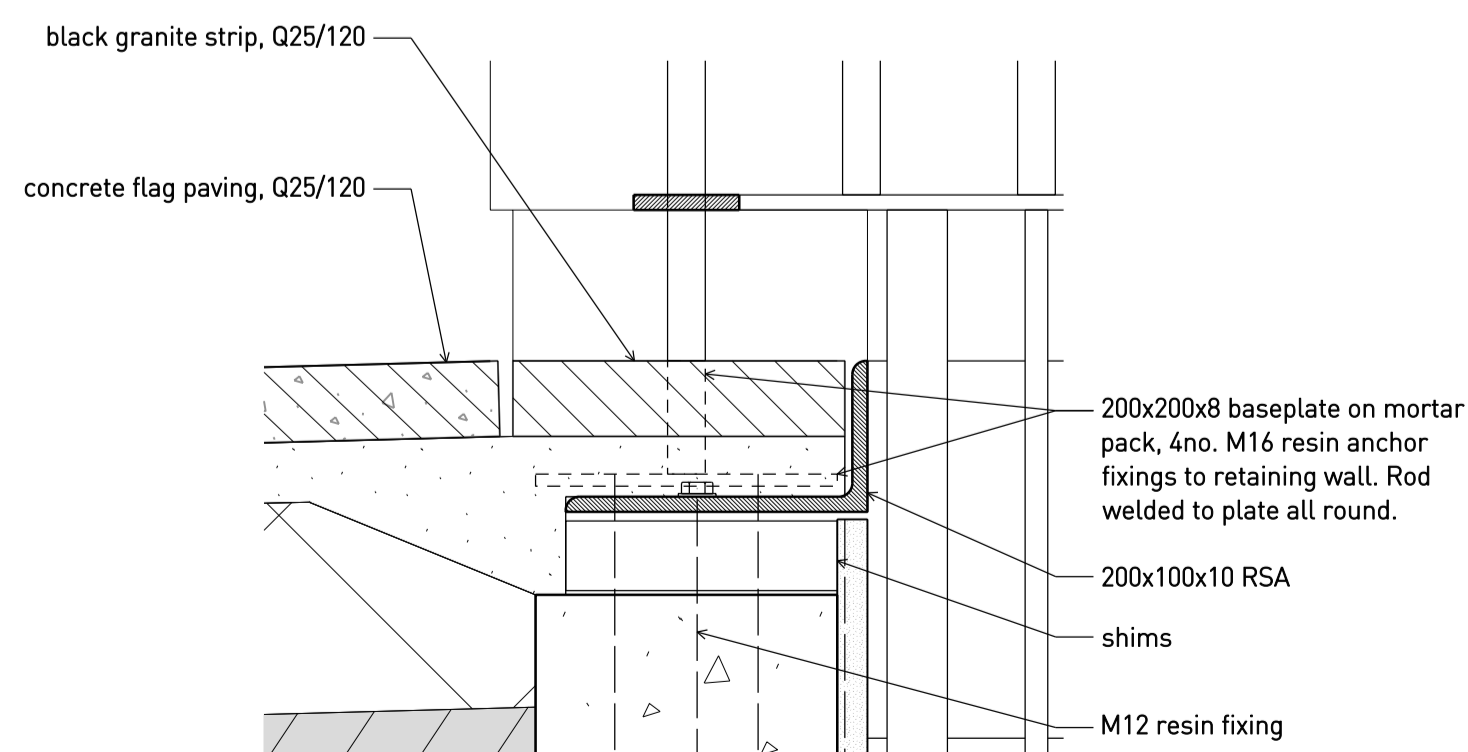
D Planter Railing Section Detail 1:5



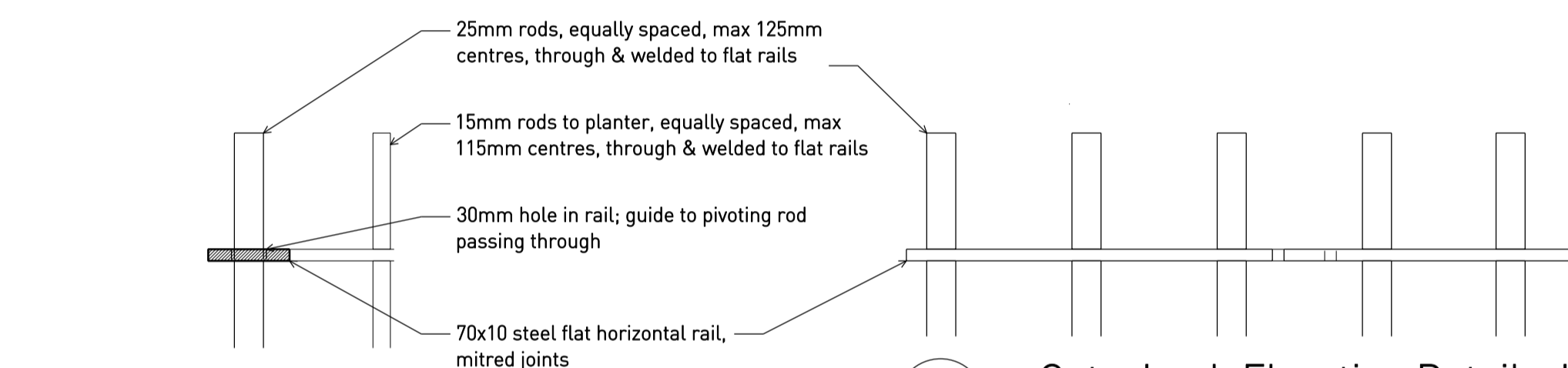
A Planter Section Detail 1:5



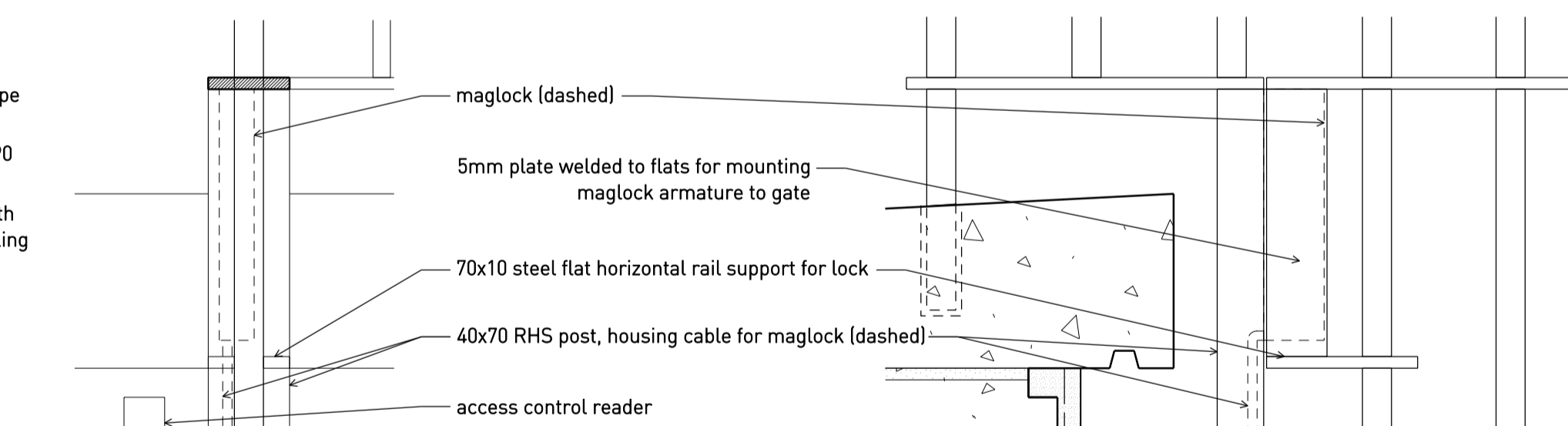
B Planter Drainage Section Detail 1:5



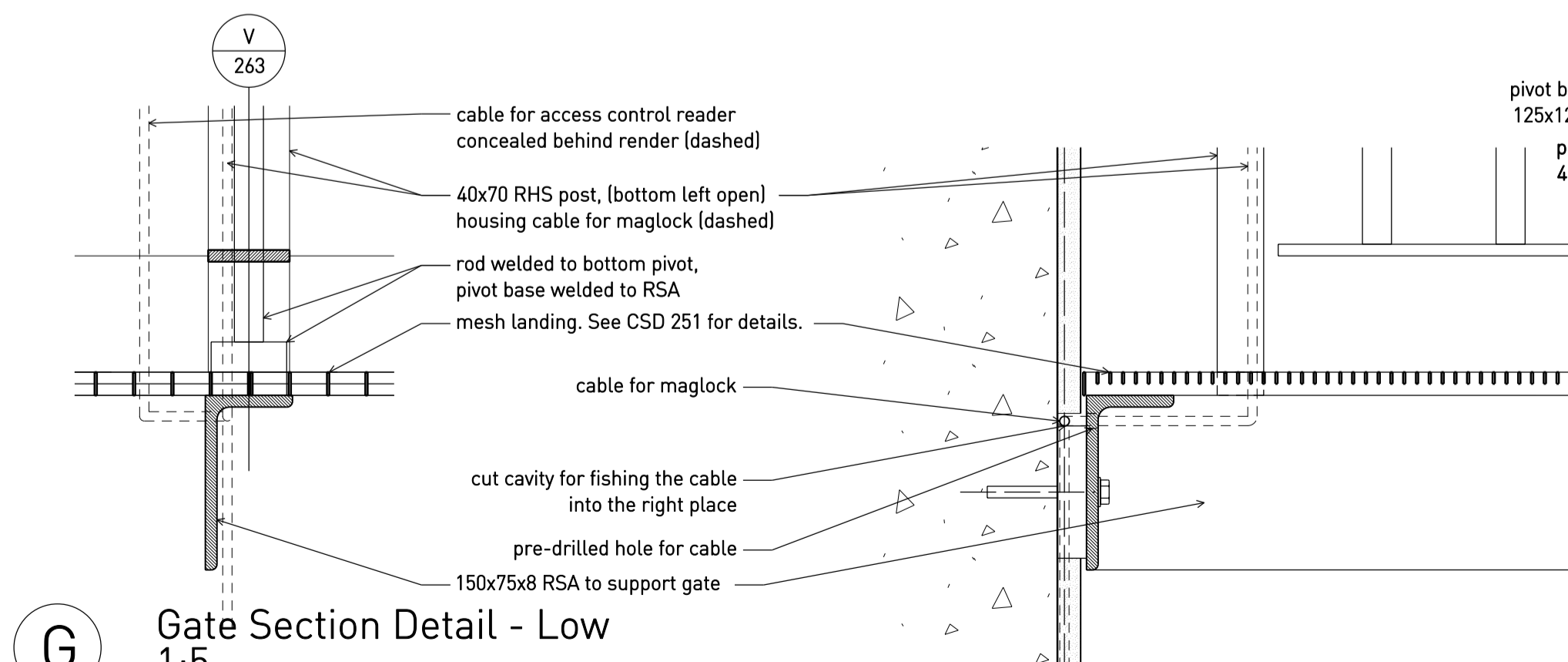
C Void Edge Section Detail 1:5



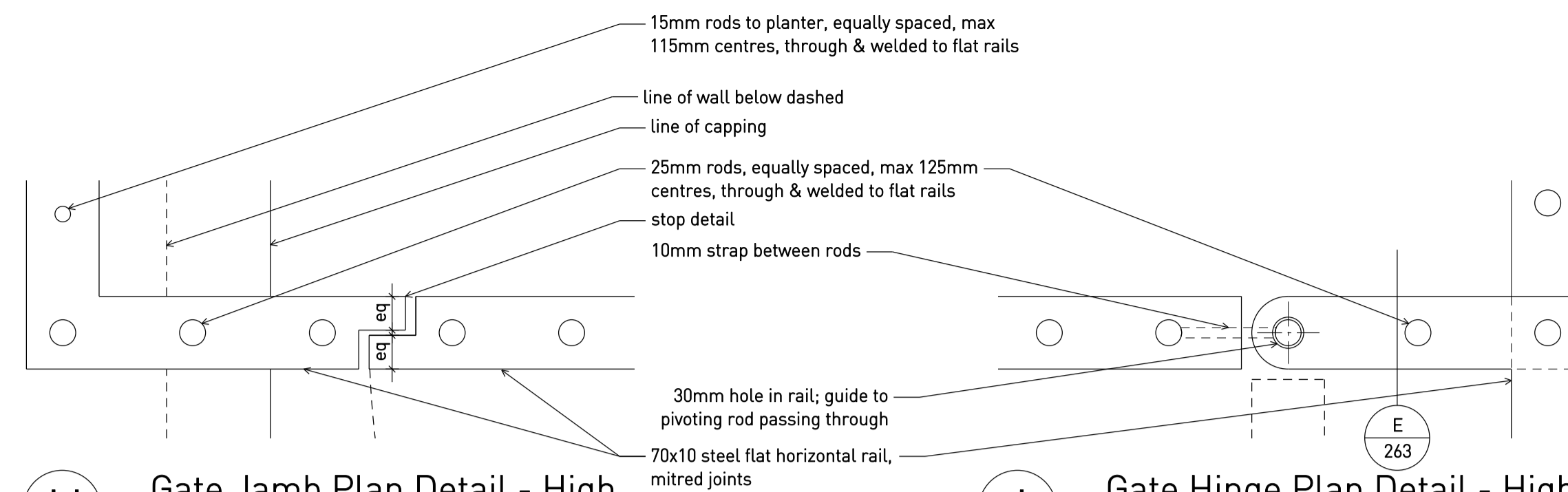
E Gate Section Detail - High 1:5



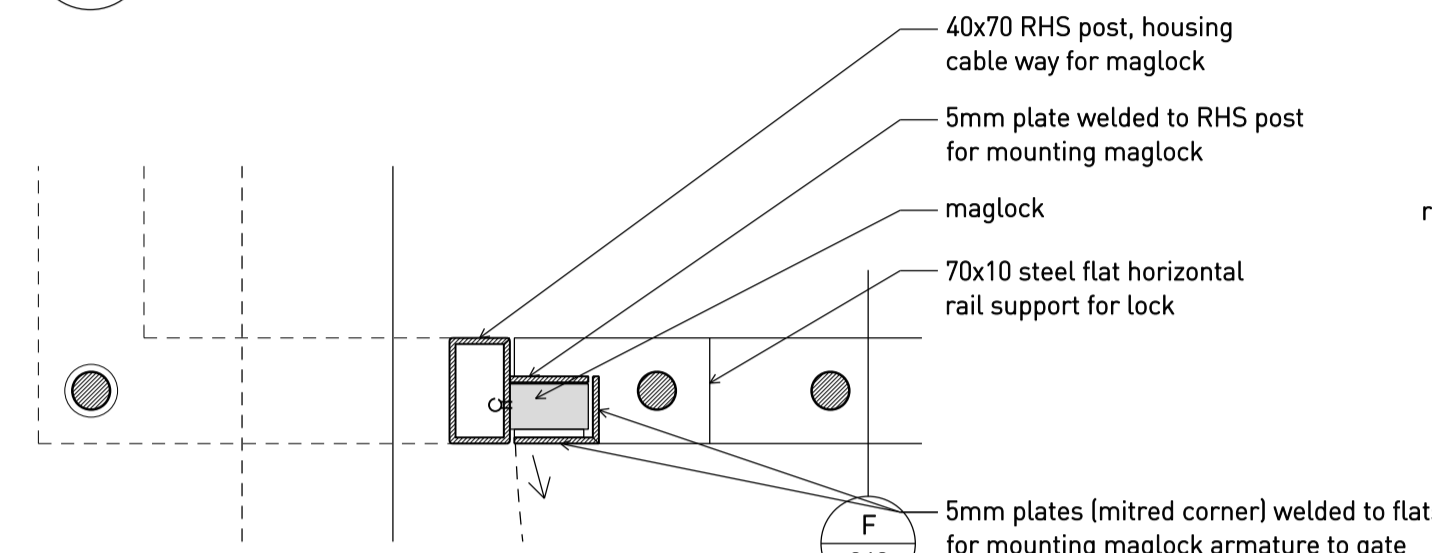
F Gate Section Detail - Mid 1:5



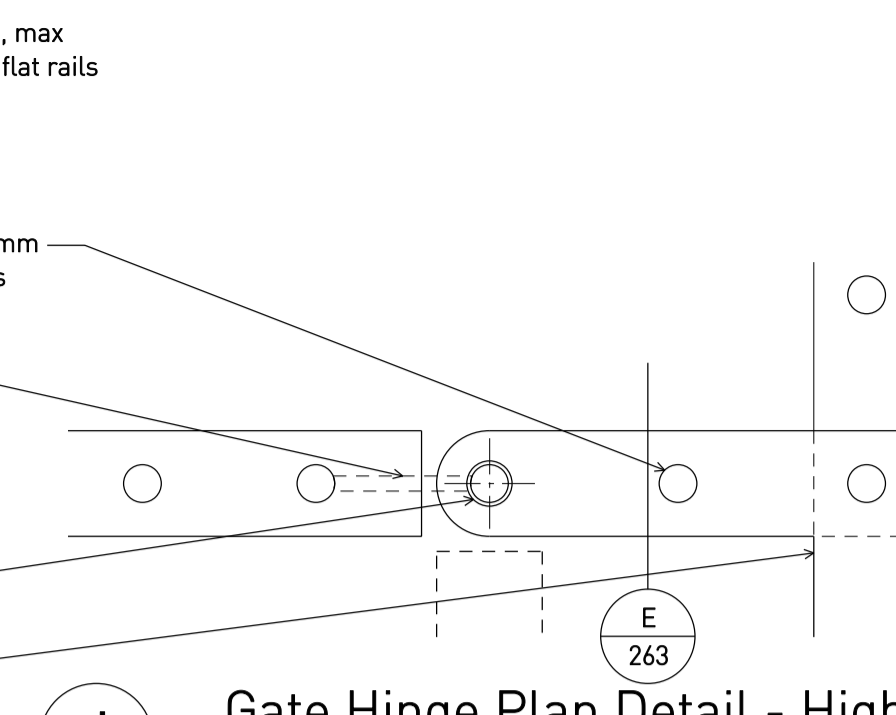
G Gate Section Detail - Low 1:5



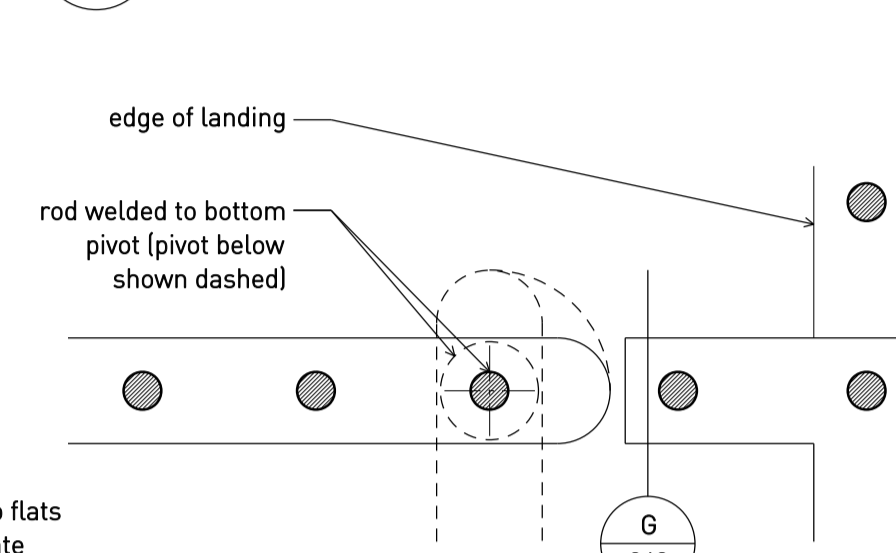
H Gate Jamb Plan Detail - High 1:5



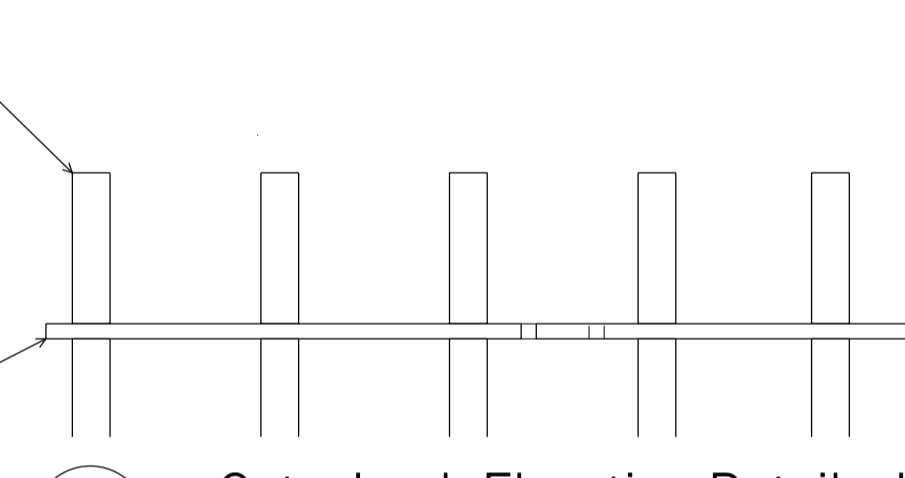
K Gate Jamb Plan Detail - Through Lock 1:5
(As detail H unless otherwise noted)



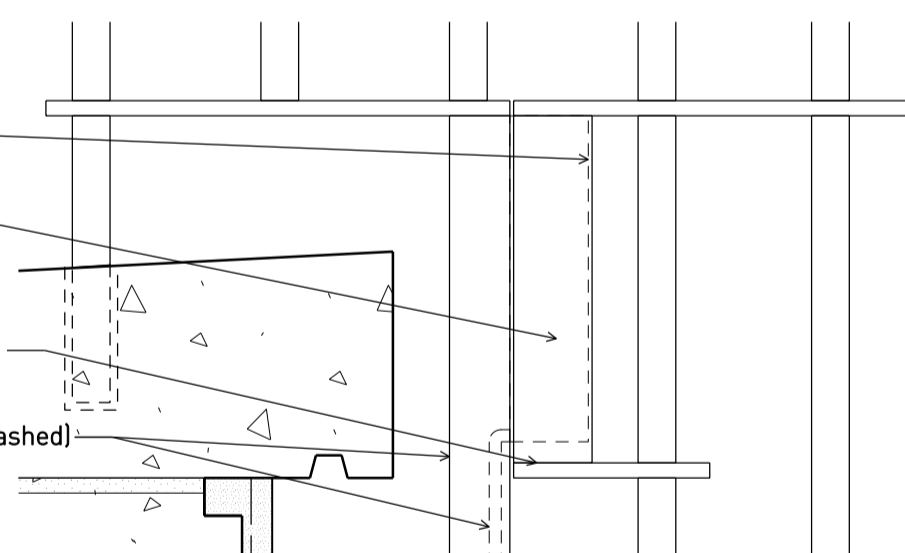
J Gate Hinge Plan Detail - High 1:5



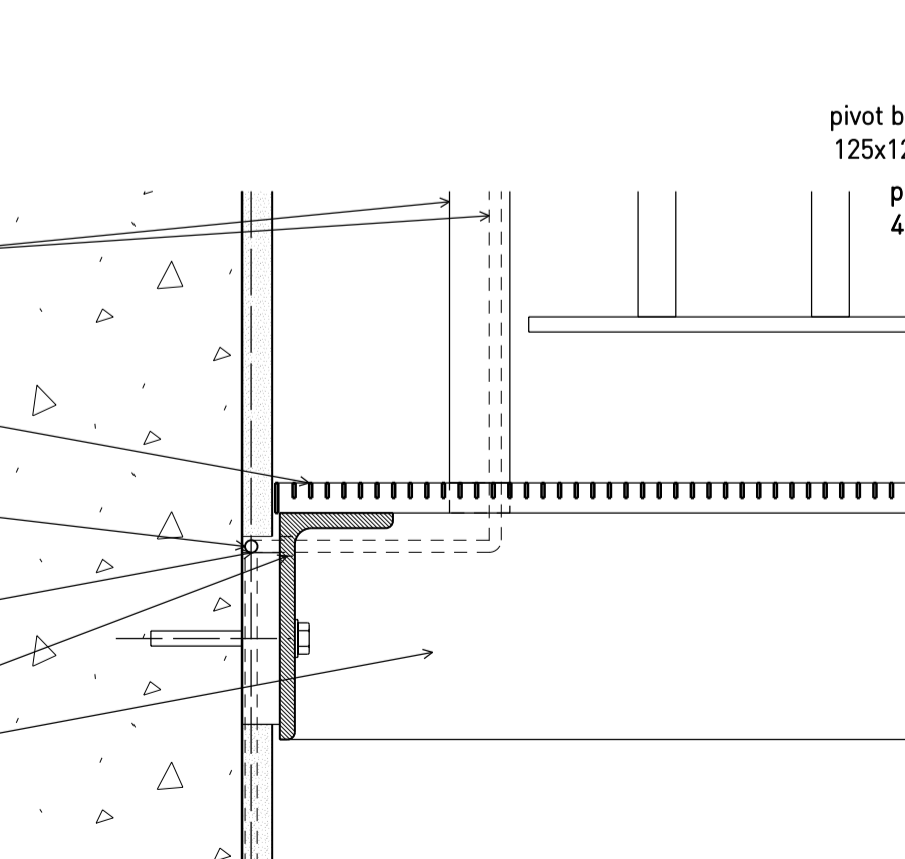
L Gate Hinge Plan Detail - Low 1:5
(As detail J unless otherwise noted)



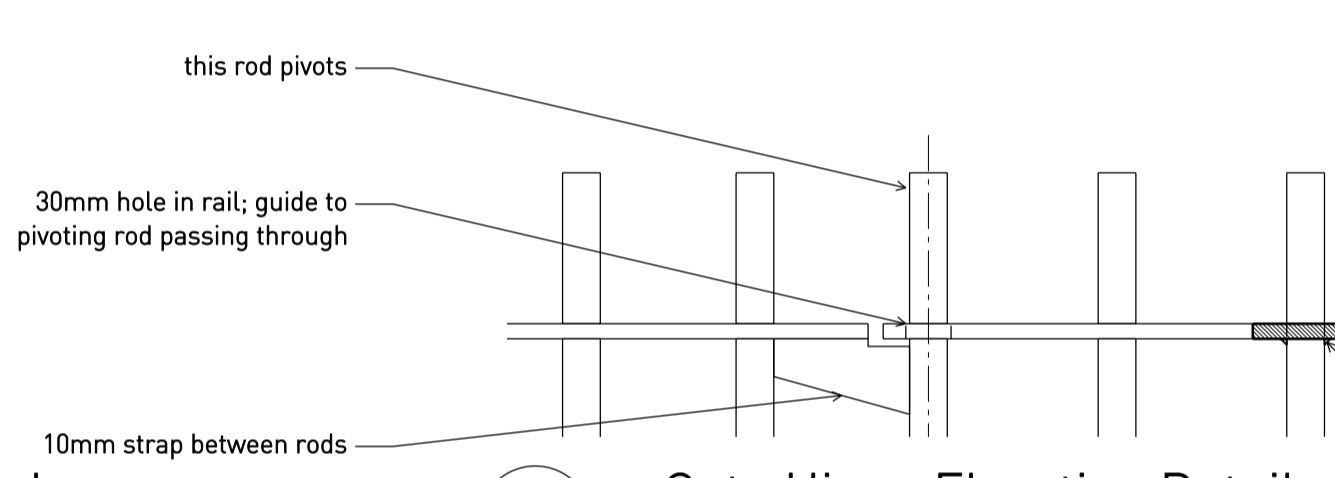
M Gate Jamb Elevation Detail - High 1:5



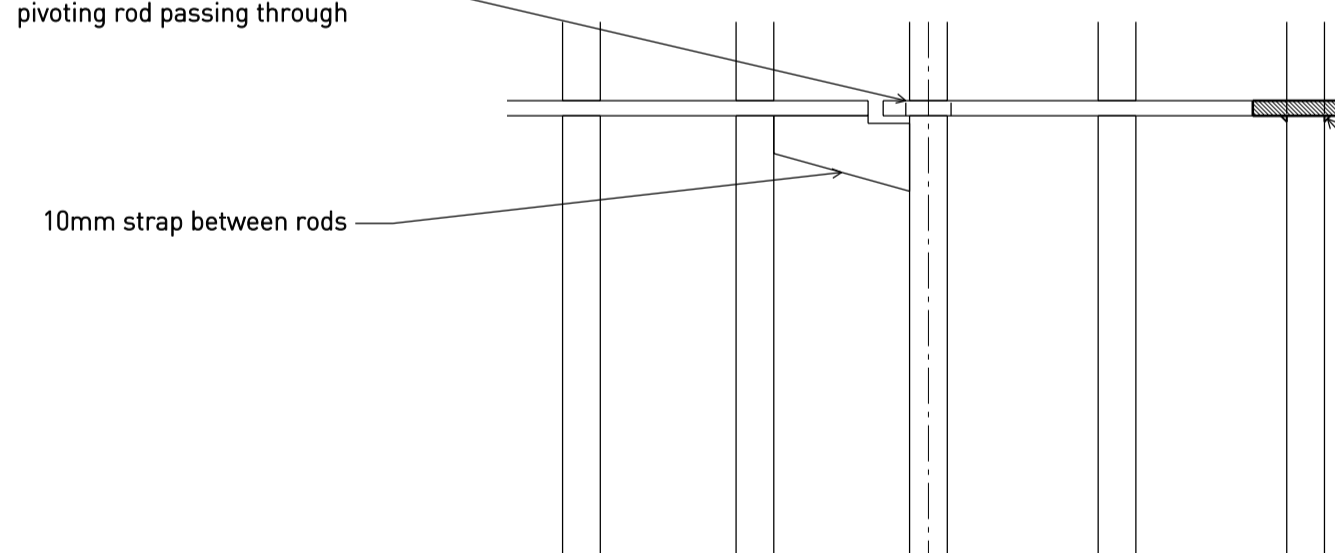
P Gate Jamb Elevation Detail - Mid 1:5



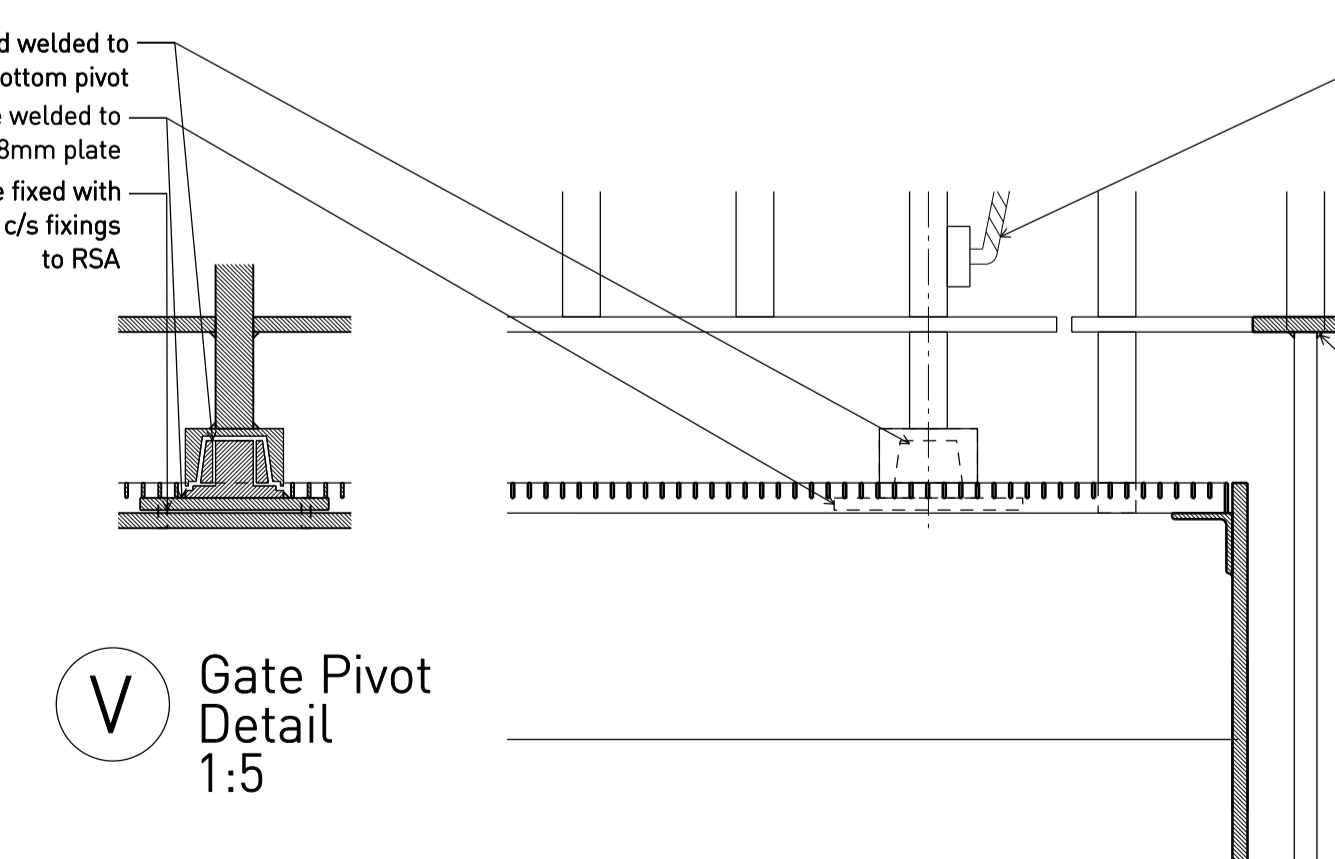
R Gate Jamb Elevation Detail - Low 1:5



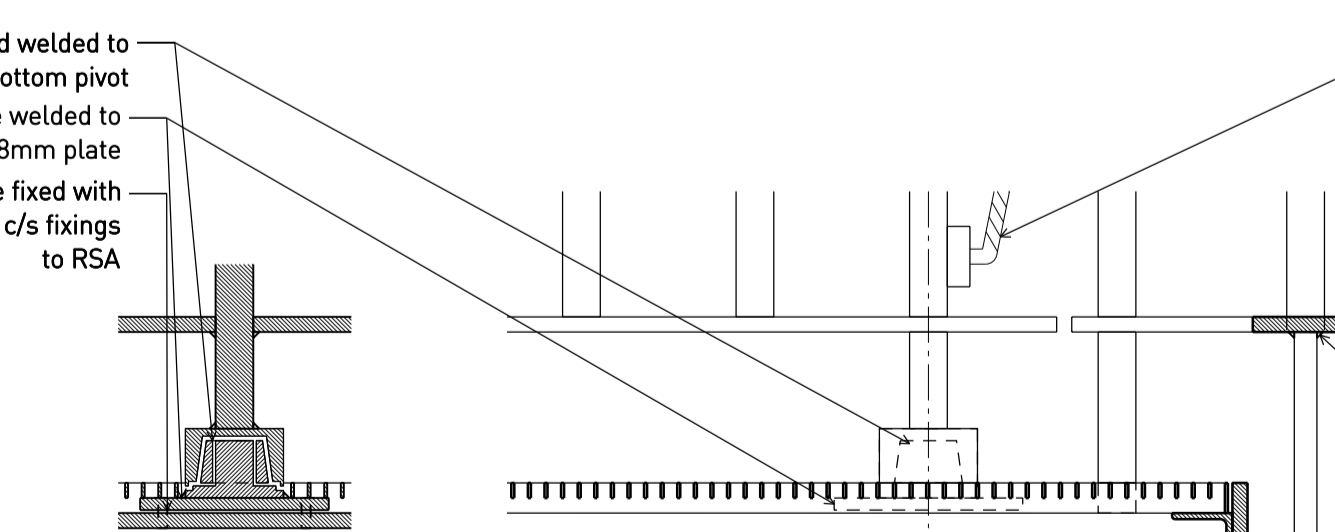
N Gate Hinge Elevation Detail - High 1:5



Q Gate Hinge Elevation Detail - Mid 1:5

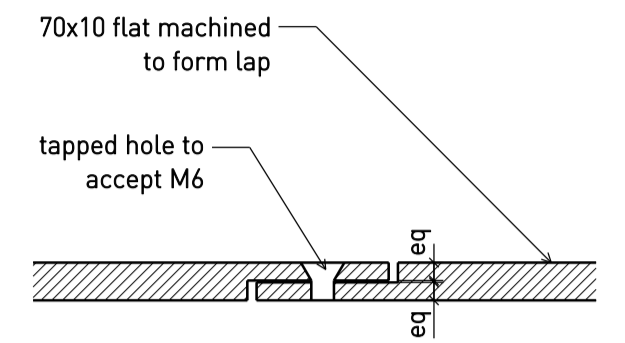


S Gate Hinge Elevation Detail - Low 1:5

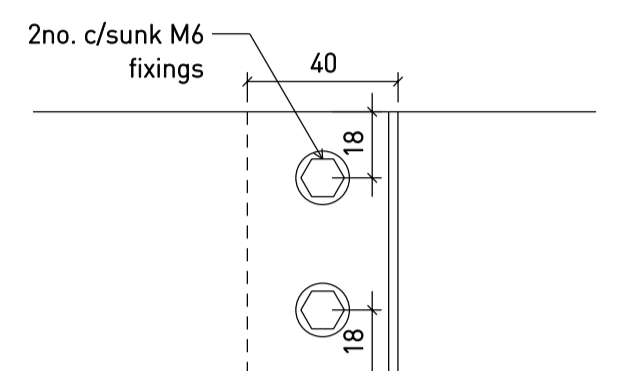


V Gate Pivot Detail 1:5

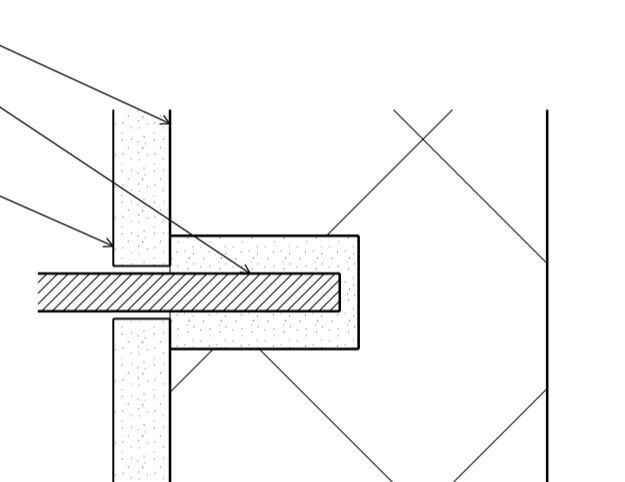
NOTES:
Specification of railings: L30/268



T Railing Connection Detail - Typical 1:2
(Positions to be agreed with architect)



U Railing to Wall Section Detail 1:2



U Railing to Wall Section Detail 1:2

A 7.10.15 Issued for TENDER
• 28.08.15 Billing issue
Rev Date Status/Notes

Tim Ronalds Architects

108 Weston Street . London SE1 3QB

tel: 020 7490 7704

office@timronalds.co.uk

Royal Central School of Speech & Drama - Phase 5

Buckland Crescent, Swiss Cottage

External Works- Details

Sheet 3- Railing

Scale [at A1] 1:2, 1:5 Drawn GK Checked AG

CSD 263 A