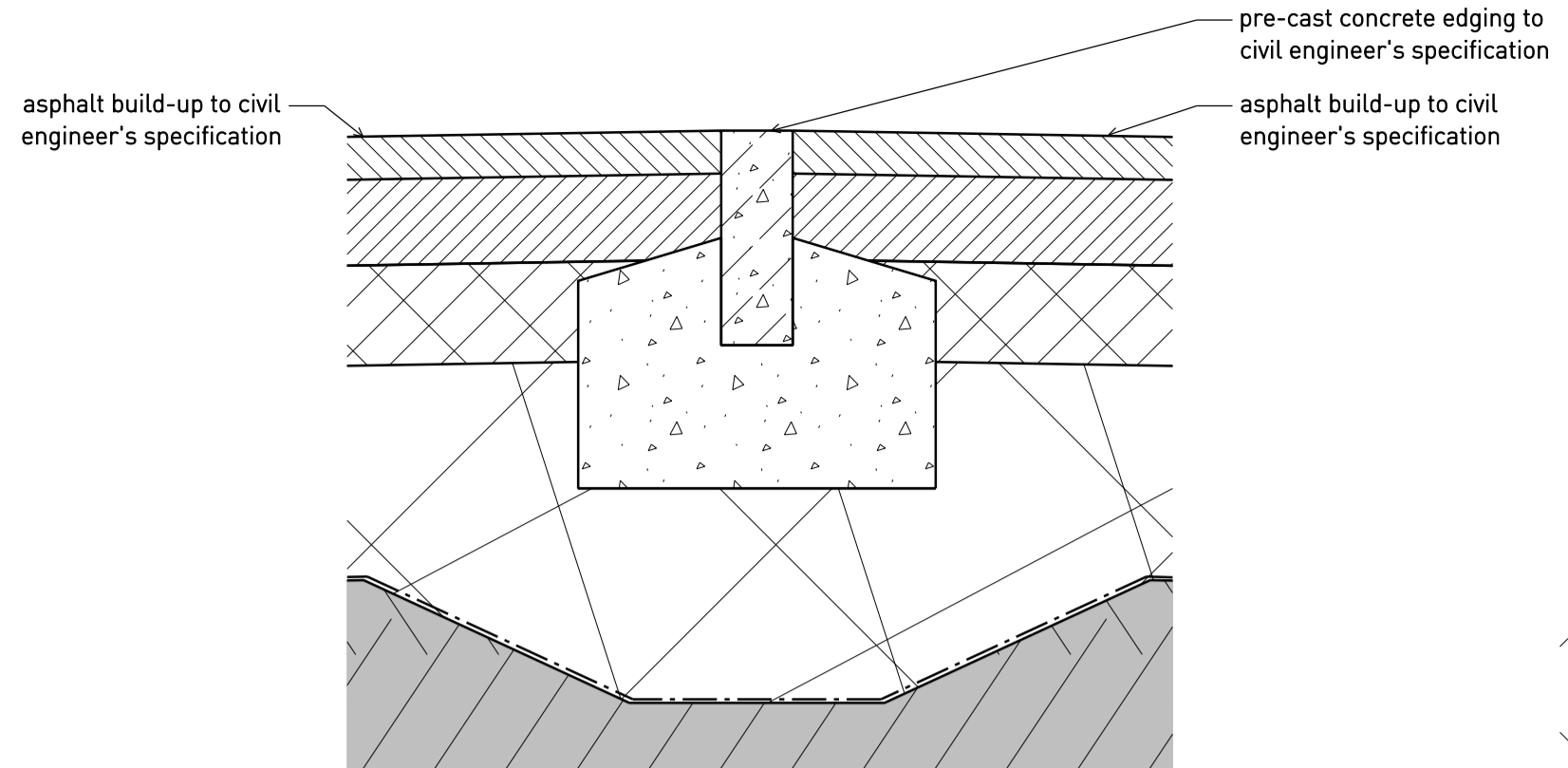
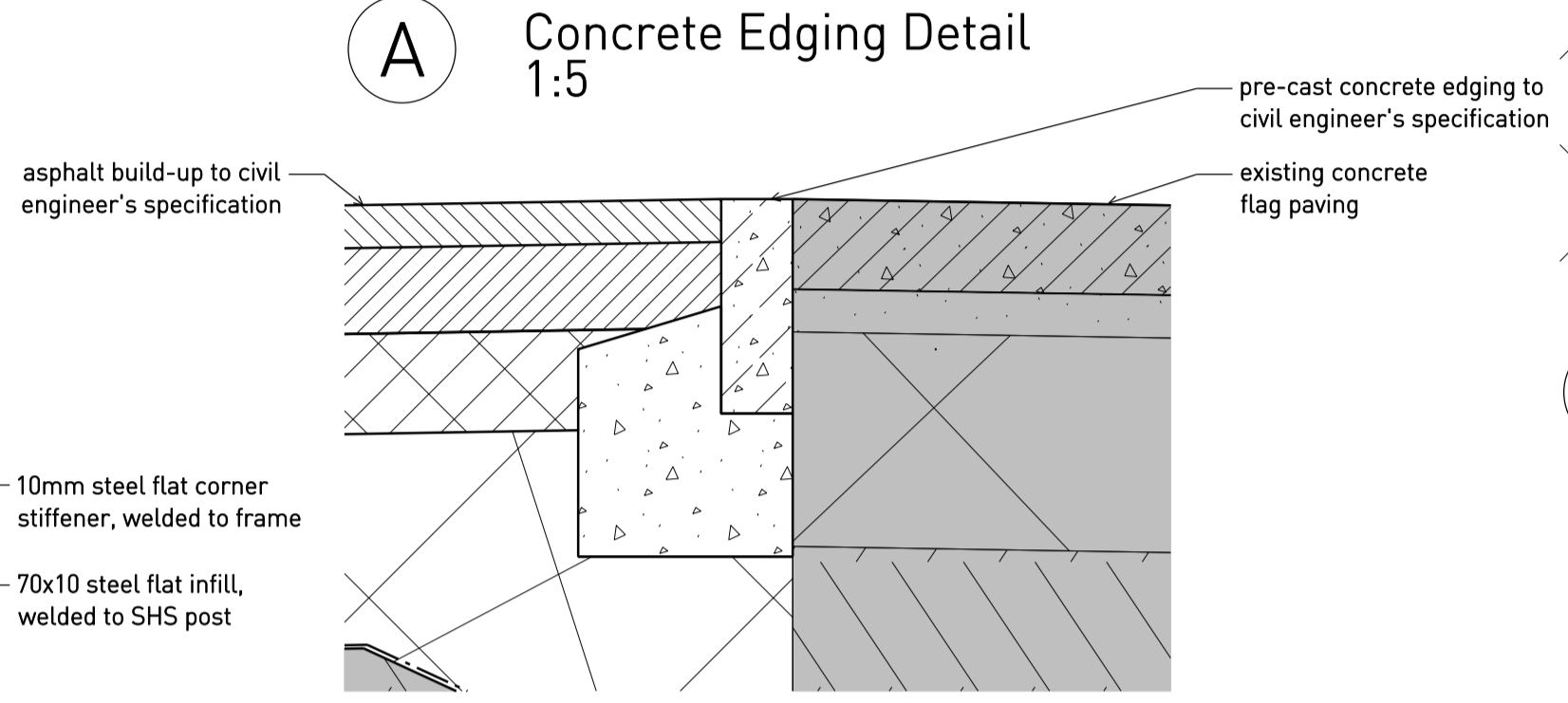


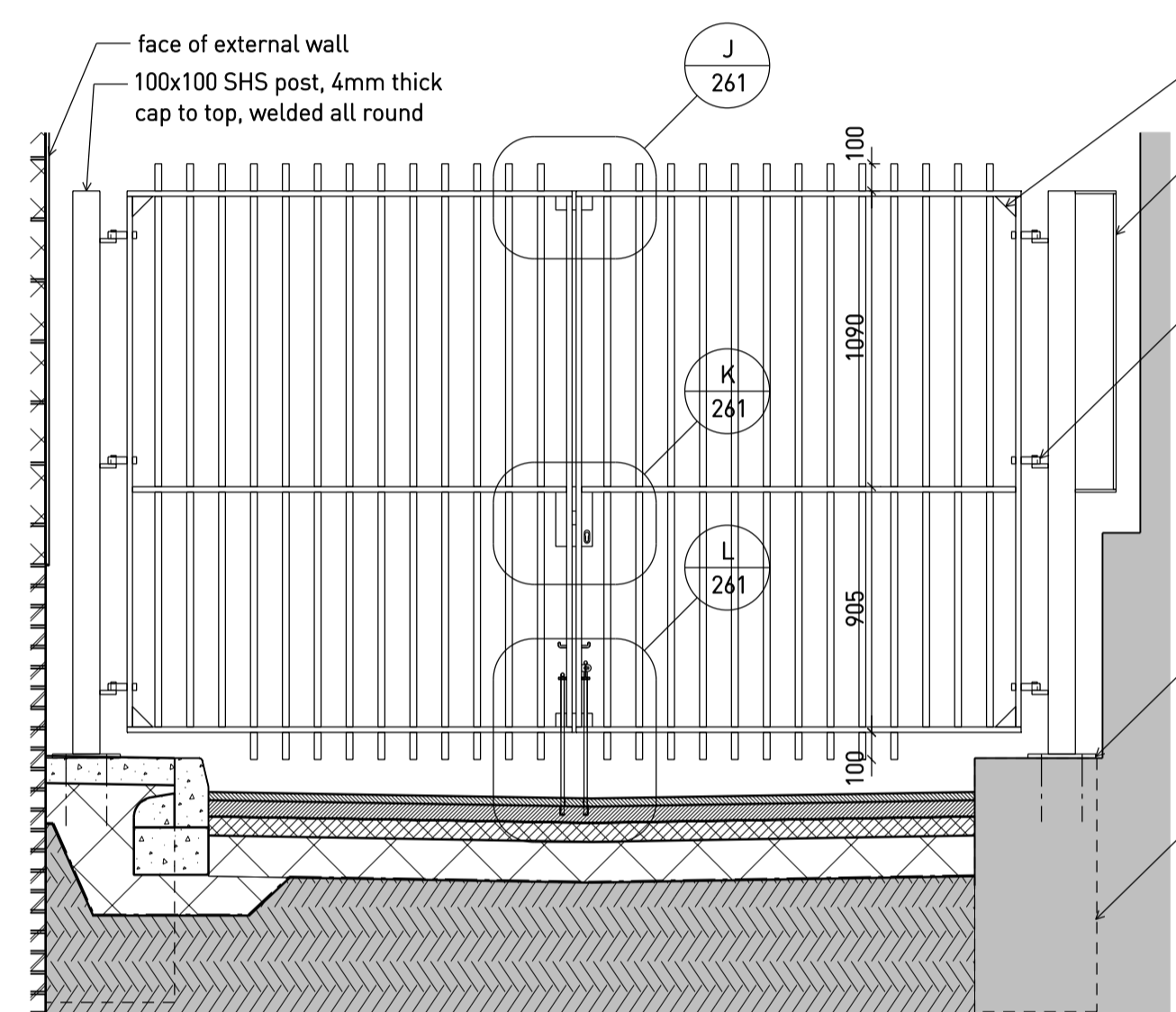
Gate Plan 1:25



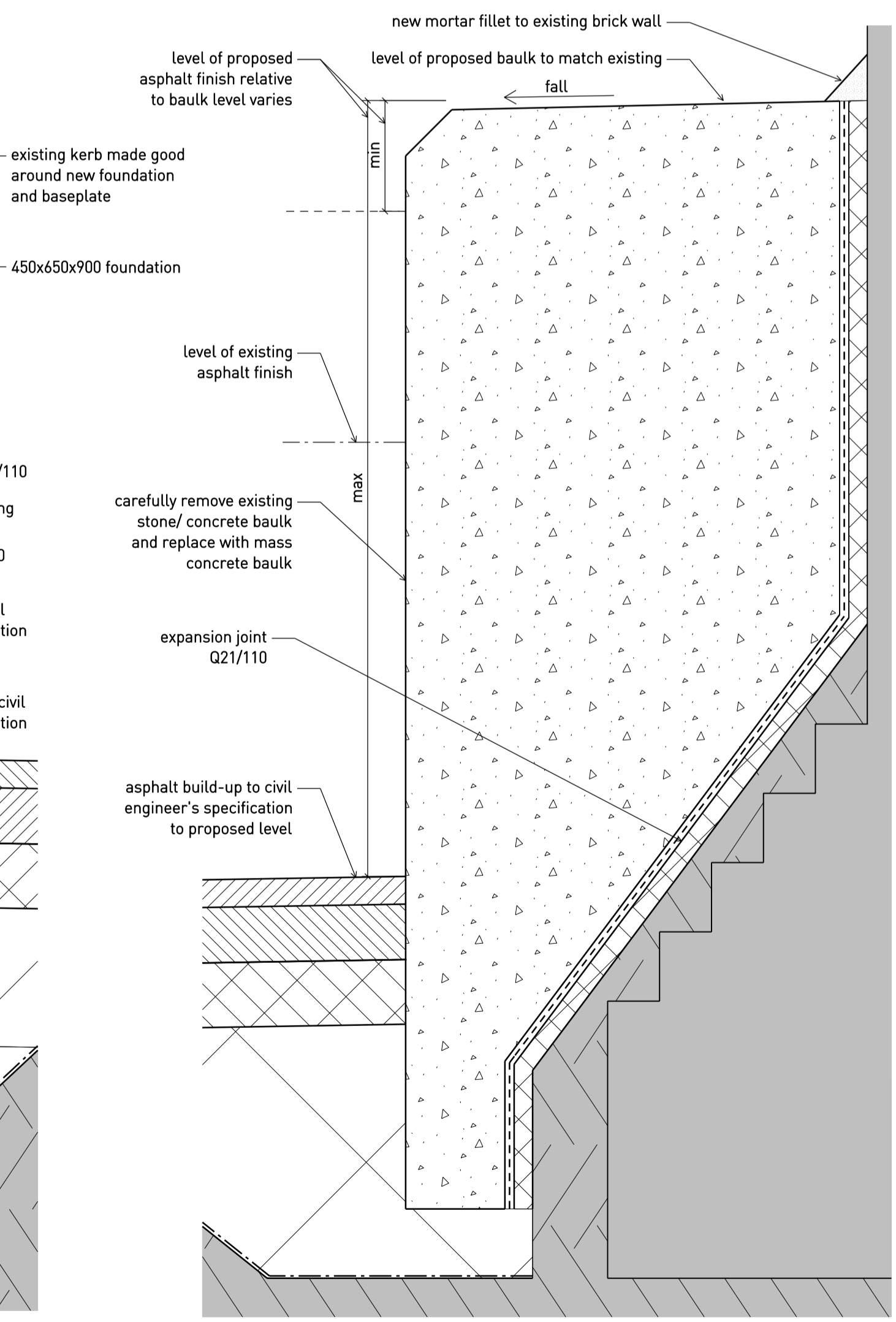
A Concrete Edging Detail 1:5



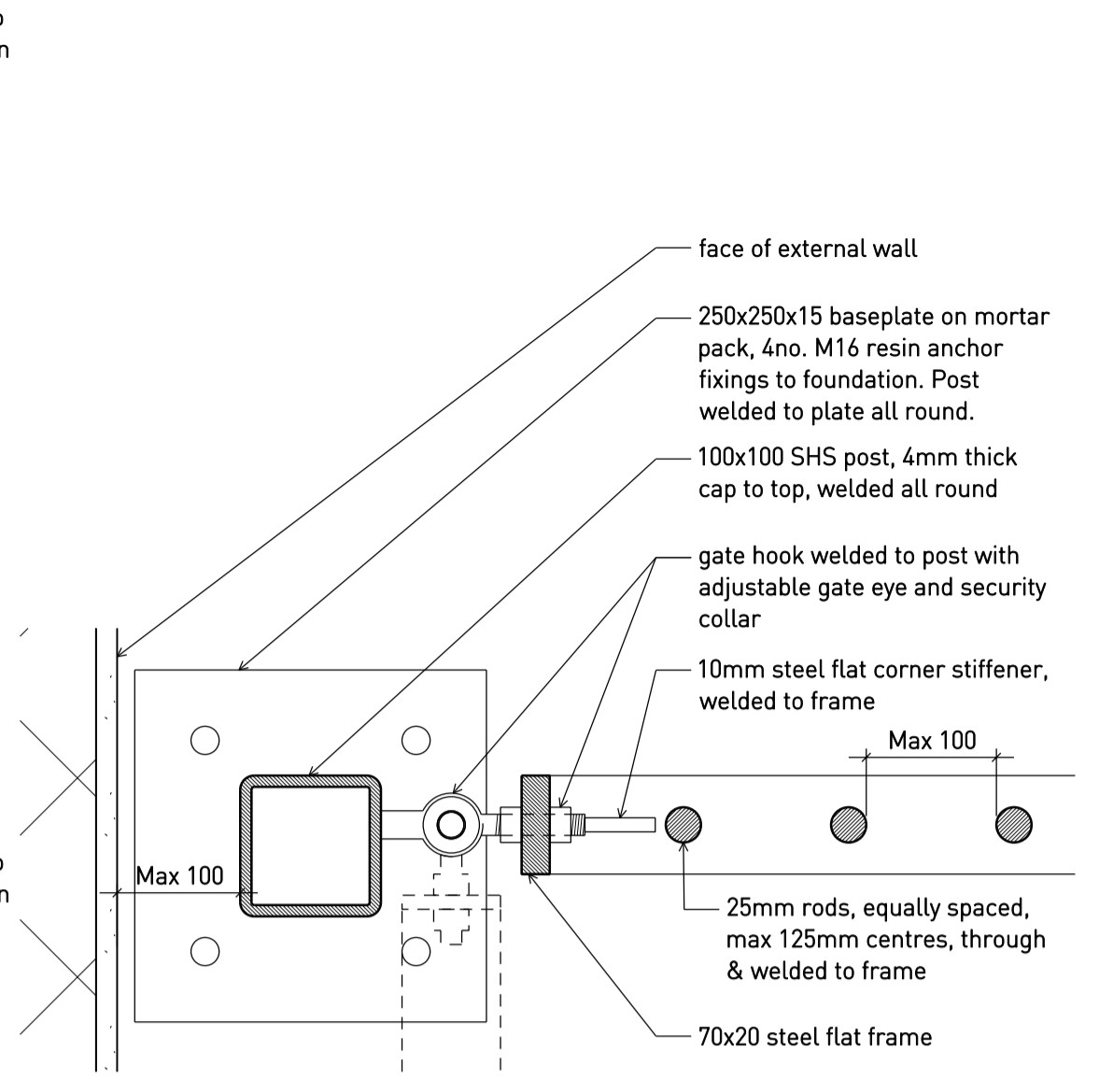
N Concrete Edging Detail to Existing Paving 1:5



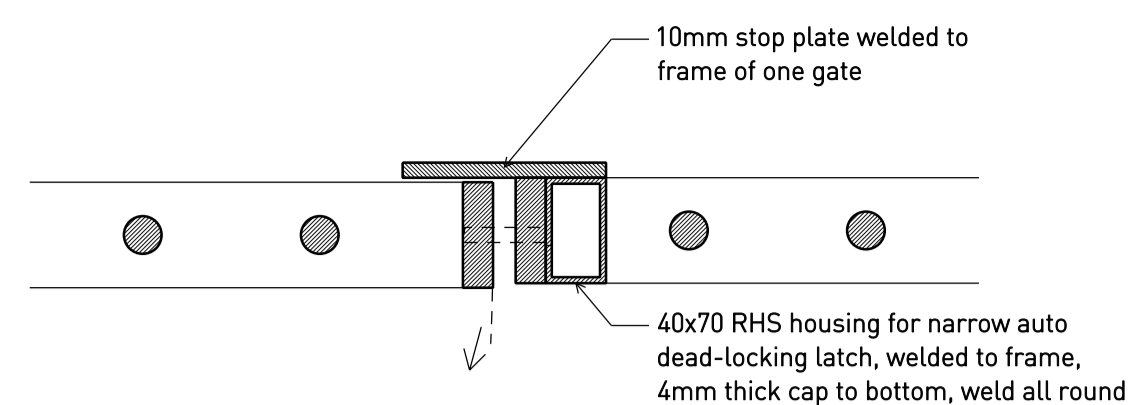
Gate Elevation - From Ramp 1:25



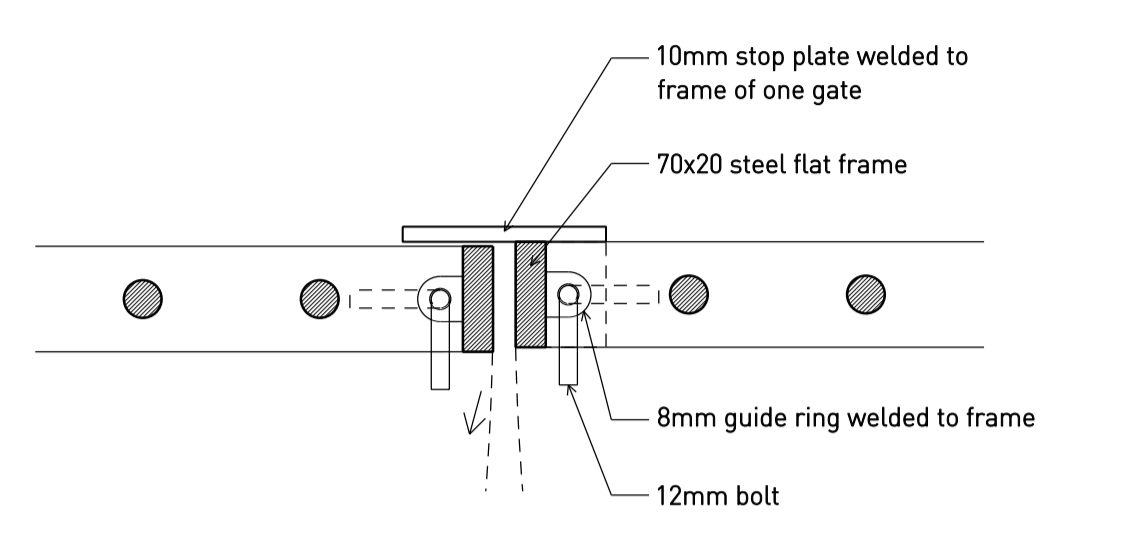
M Concrete Balk Detail to Boundary 1:5



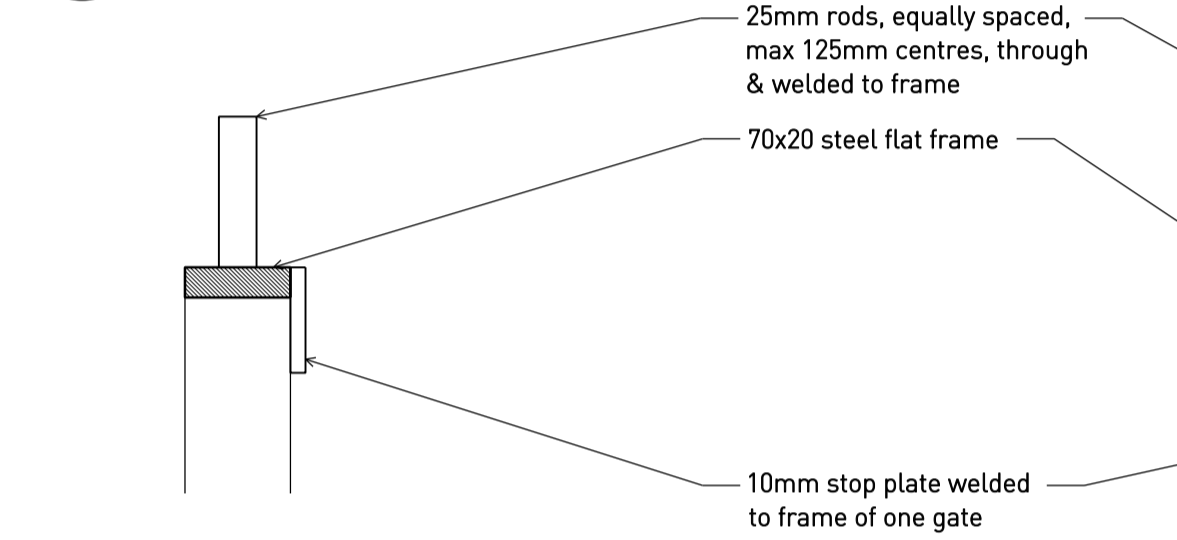
C Gate Jamb Plan Detail - Low 1:5



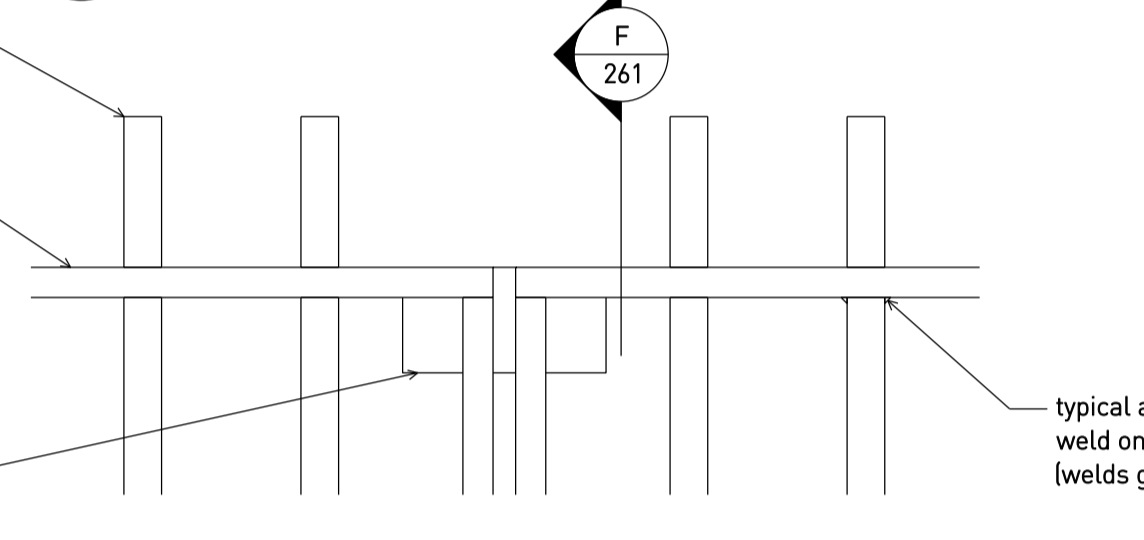
D Gate Stile Plan Detail - Through Lock 1:5



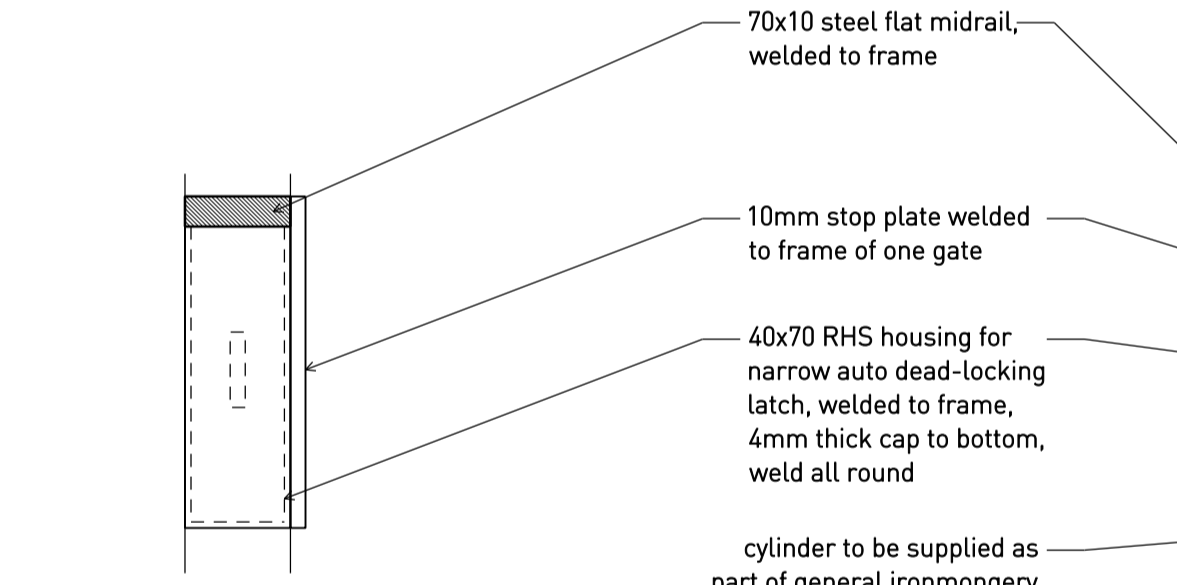
E Gate Stile Plan Detail - Low 1:5



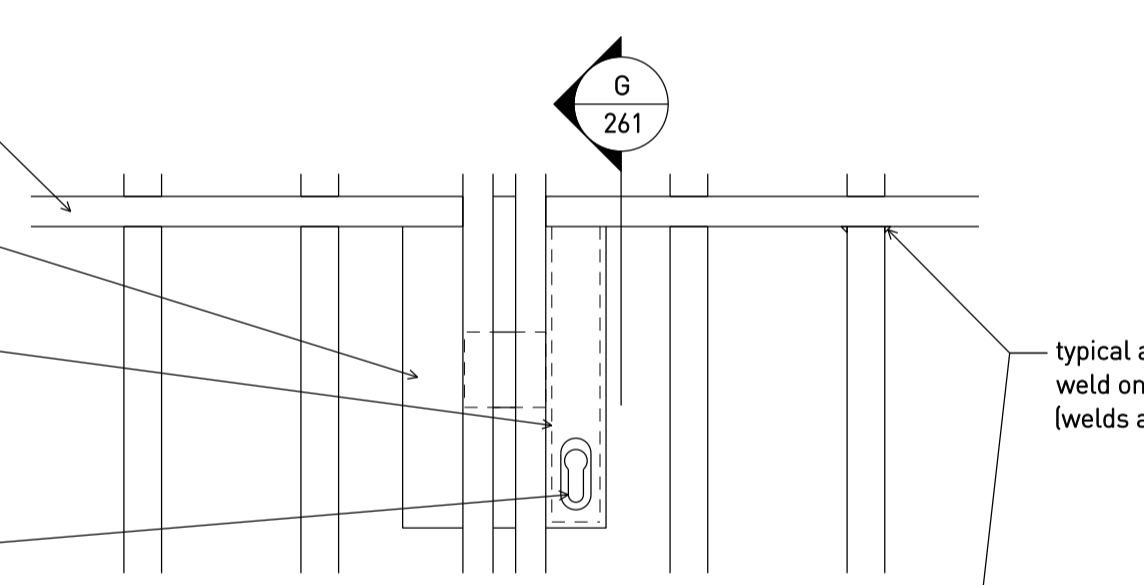
F Gate Section Detail - High 1:5



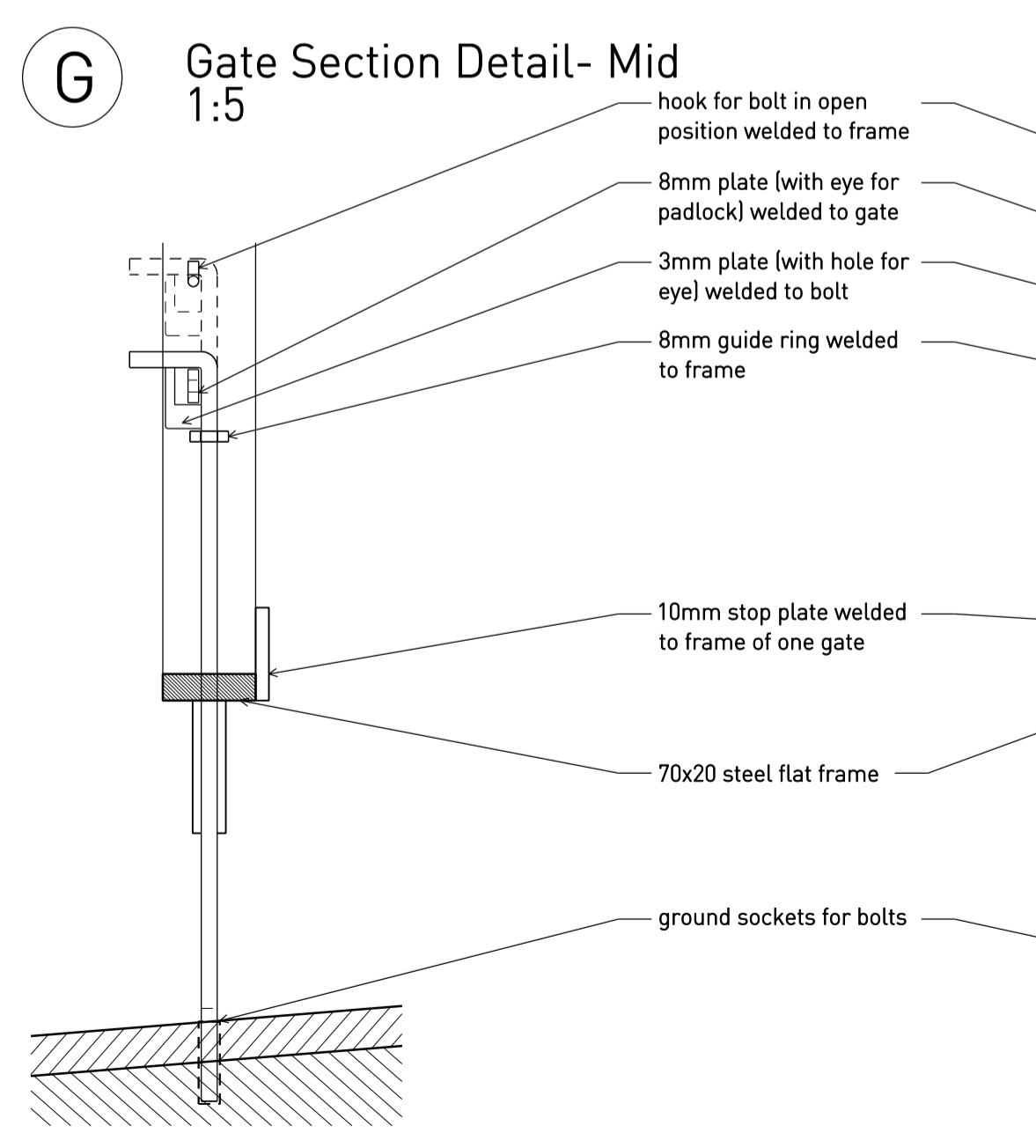
J Gate Stile Elevation Detail - High 1:5



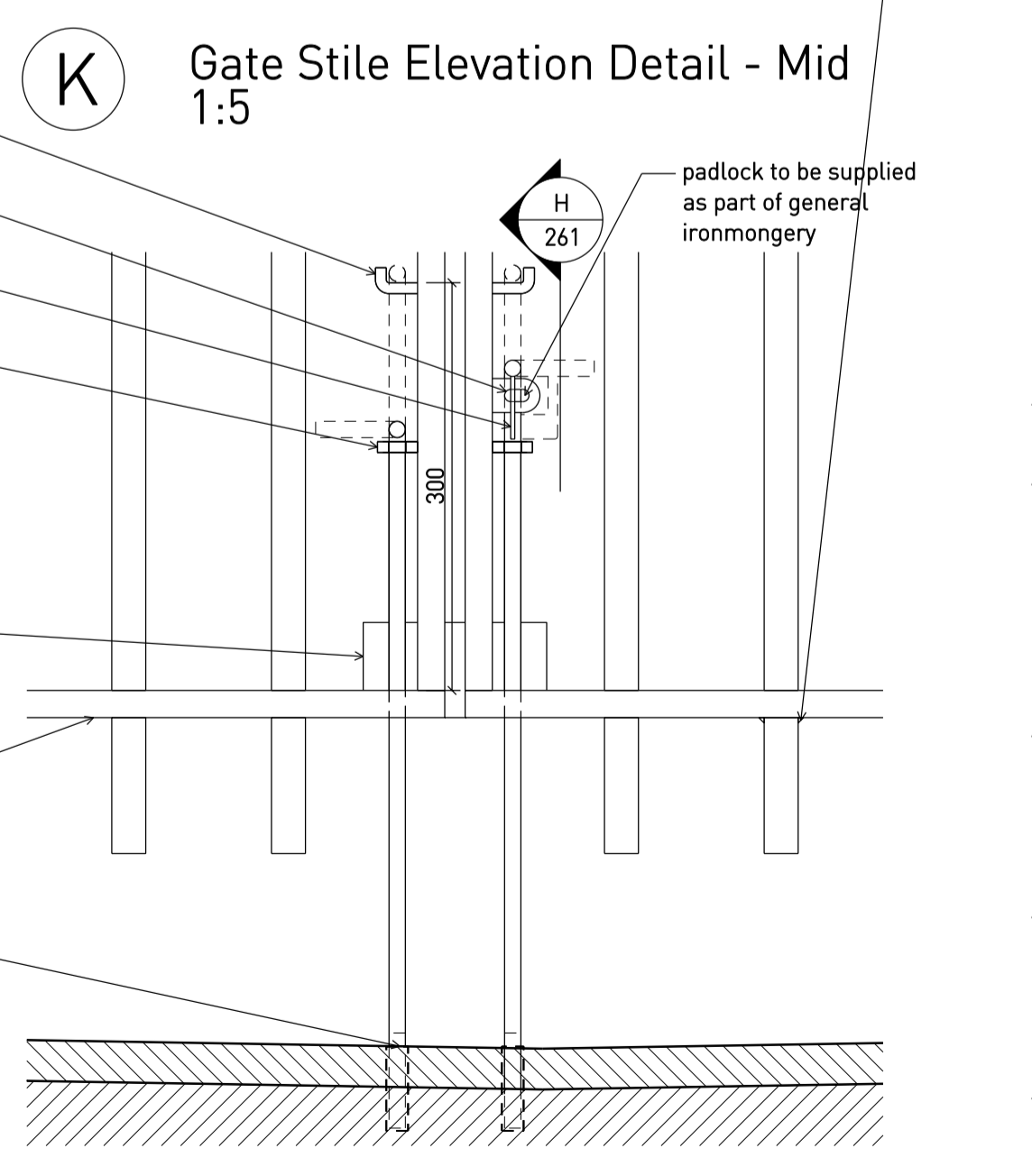
G Gate Section Detail - Mid 1:5



K Gate Stile Elevation Detail - Mid 1:5



H Gate Section Detail - Low 1:5



L Gate Stile Elevation Detail - Low 1:5

NOTES:  
Specification of gate: L30/270

A	7.10.15	Issued for TENDER
•	28.08.15	Billing issue
Rev	Date	Status/Notes

**Tim Ronalds Architects**  
108 Weston Street . London SE1 3QB  
tel: 020 7490 7704  
office@timronalds.co.uk

Royal Central School of  
Speech & Drama - Phase 5  
Buckland Crescent, Swiss Cottage  
External Works- Details  
Sheet 1

Scale [at A1]	Drawn	Checked
1:25, 1:5	GK	AG

**CSD 261 A**