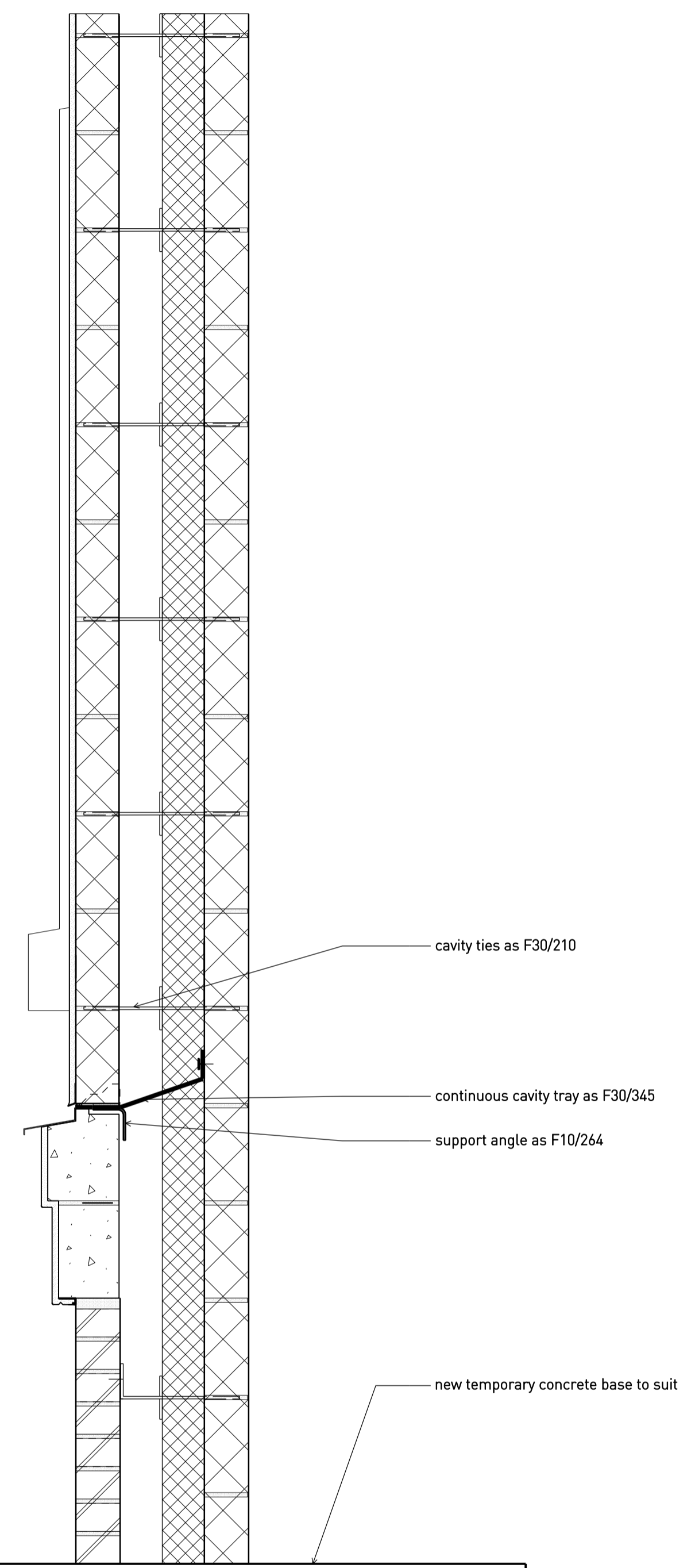


- movement joint F30/610
- render finishes as M20/110
- thickened render to form moulding around window as M20/110
- window L10/320
- precast concrete sill as F31/105
- render as M20/110 painted as M60/190
- flashing as M20/110
- render over precast banding as M20/110
- render as M20/110
- window as L10/310
- brickwork as F10/120

Wall Sample Panel Front View 1:10  
(West Elevation Extract)



- cavity ties as F30/210
- continuous cavity tray as F30/345
- support angle as F10/264
- new temporary concrete base to suit

Wall Sample Panel Side View 1:10

**Notes**

demolish sample panel at completion of external walls and windows

Rev	Date	Status/Notes
A	7.10.15	Issued for TENDER
*	18.09.15	Issued for BILLING

**Tim Ronalds Architects**  
 108 Weston Street . London SE1 3QB  
 tel: 020 7490 7704  
 office@timronalds.co.uk

Royal Central School of  
 Speech & Drama - Phase 5  
 Buckland Crescent, Swiss Cottage  
 External Wall Sample Panel

Scale (at A1)	Drawn	Checked
1:10	NB	AG

**CSD 240 A**