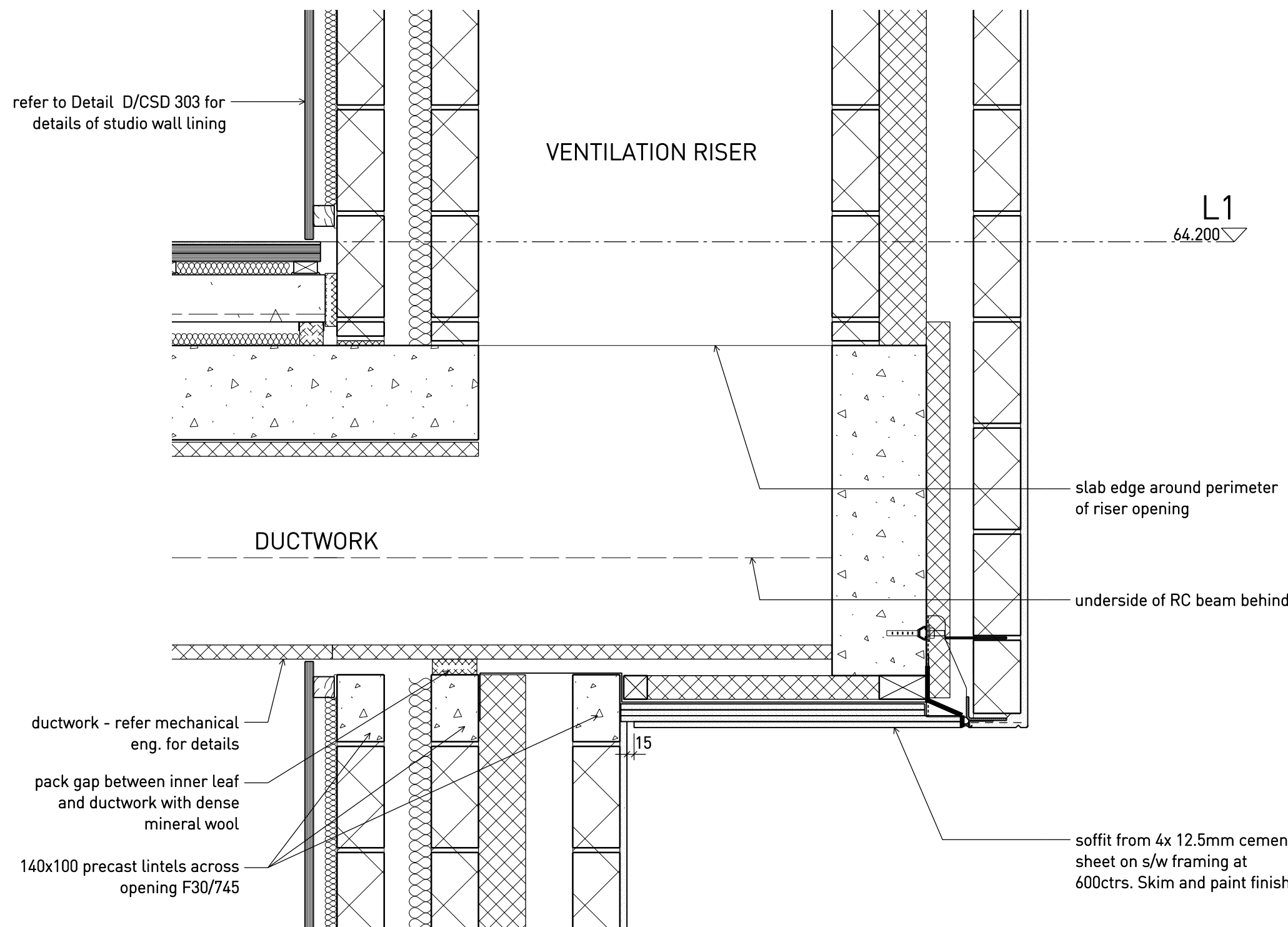
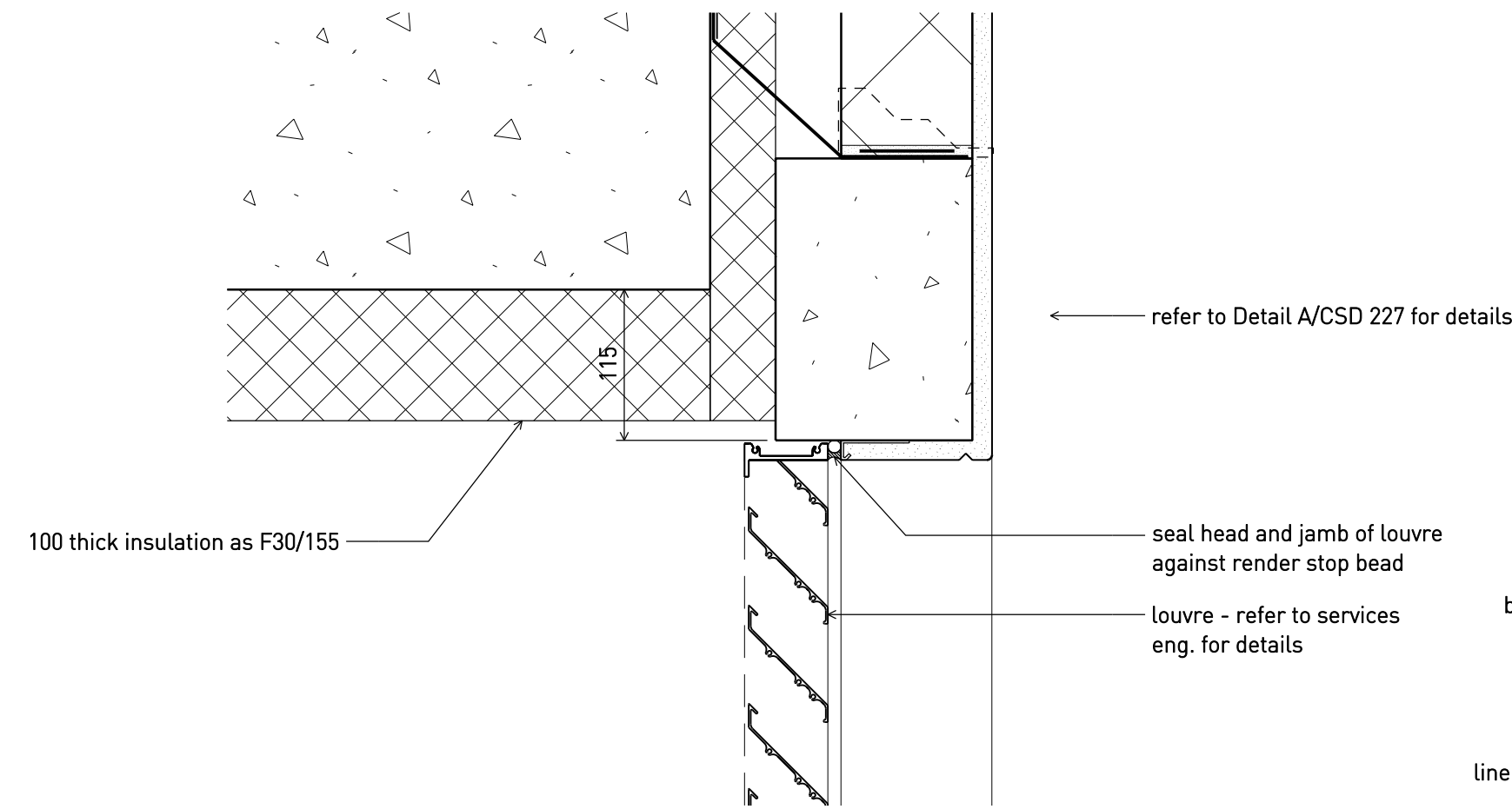


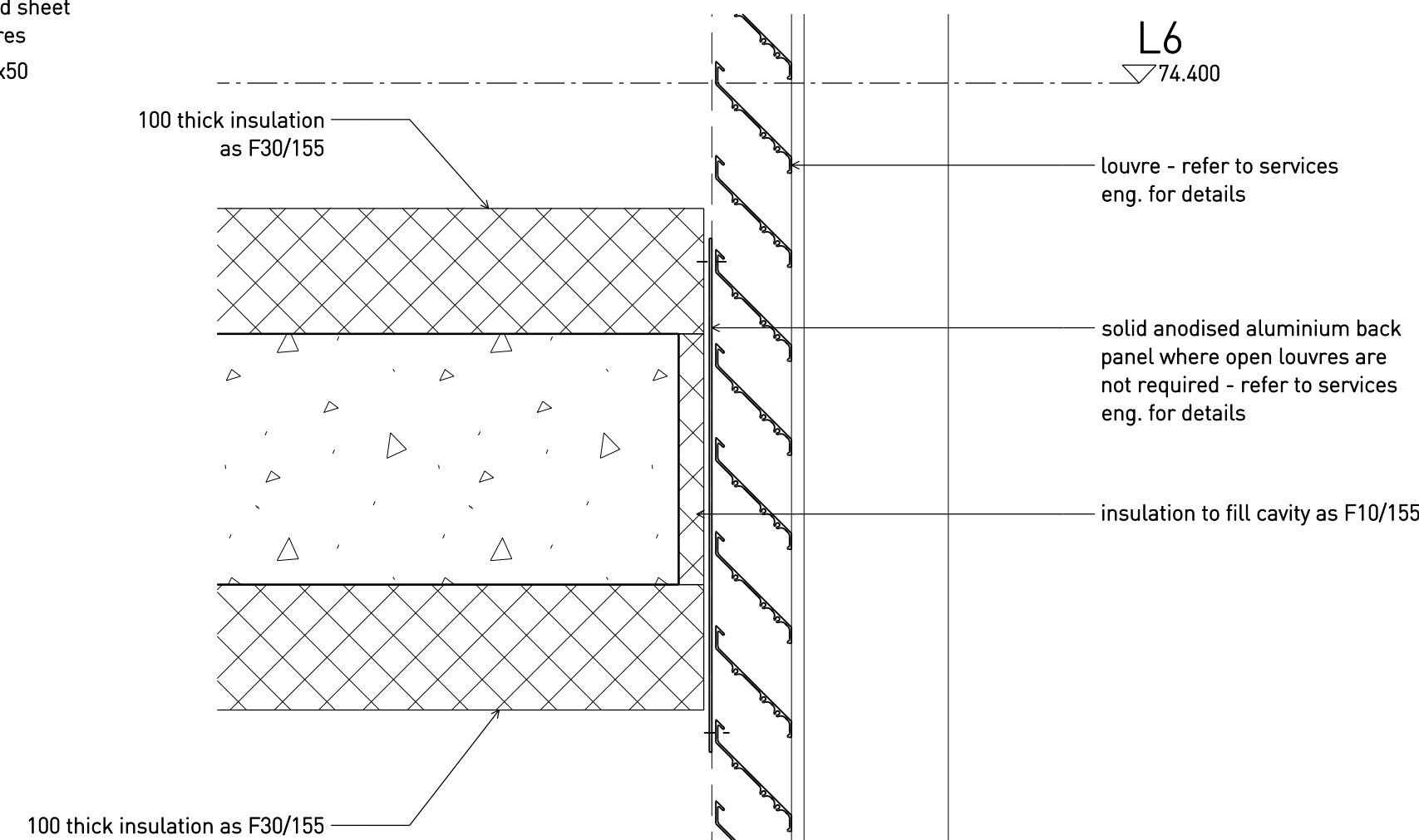
**A** East facade overhang sec. detail - typical 1:10



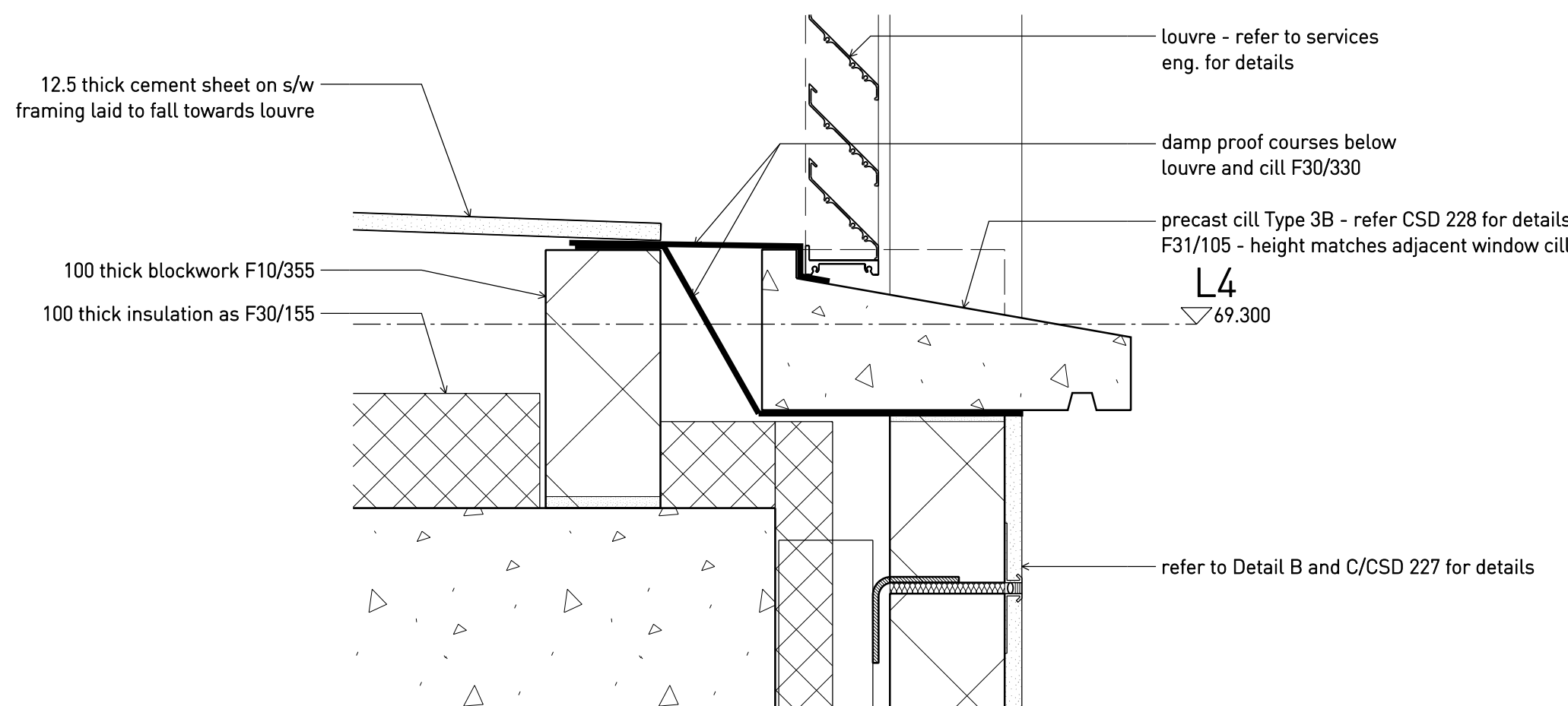
**B** East facade overhang sec. detail - ventilation riser 1:10  
AS PER DETAIL A UNLESS OTHERWISE NOTED



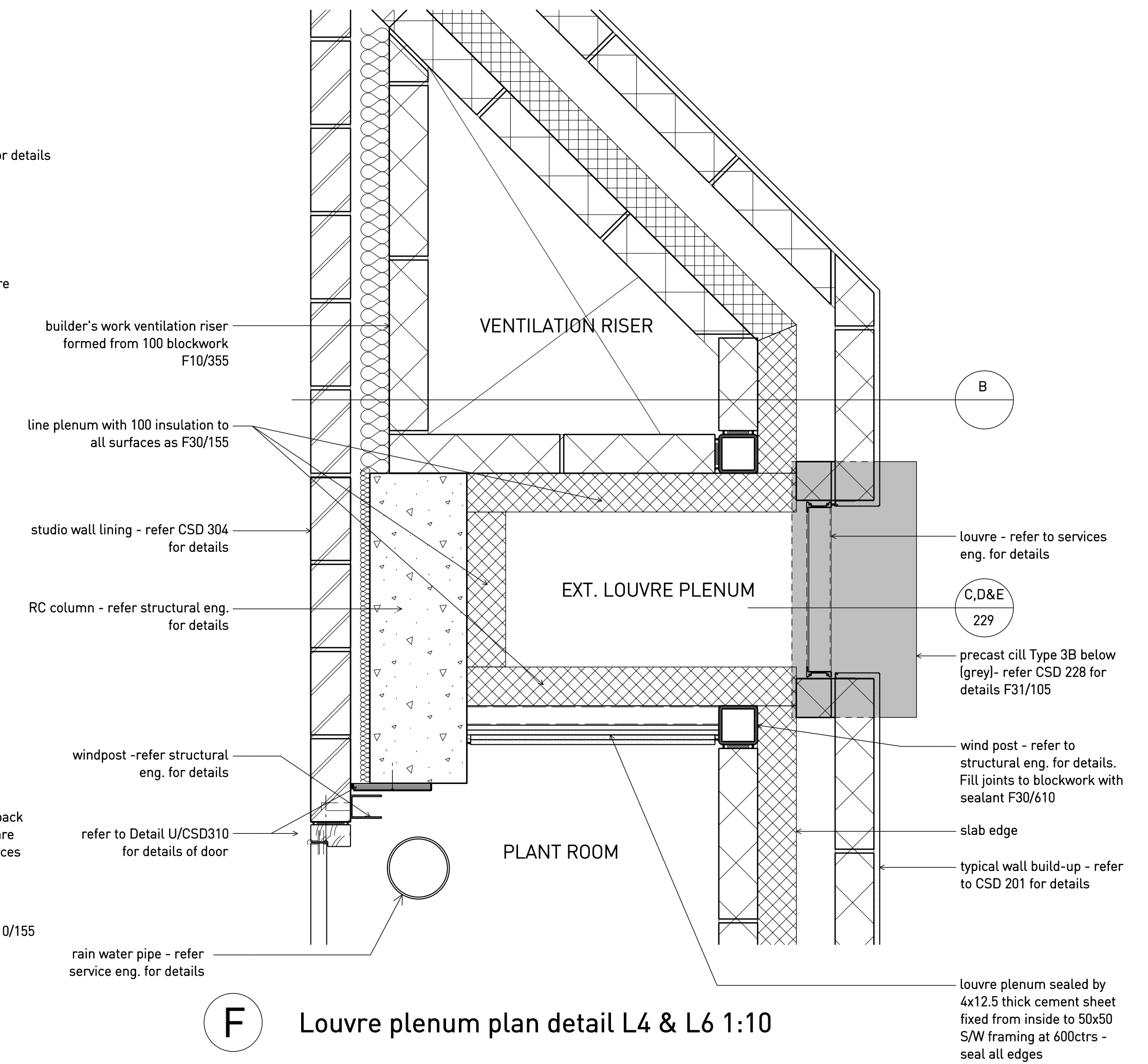
**C** Studio plant louvre head details 1:5  
READ IN CONJUNCTION WITH DETAIL A/CSD 227



**D** Studio plant louvre transom details 1:5



**E** Studio plant louvre cill details 1:5



**F** Louvre plenum plan detail L4 & L6 1:10

A	2.10.15	Issued for TENDER
•	27.08.15	Billing issue
Rev	Date	Status/Notes

## Tim Ronalds Architects

108 Weston Street . London SE1 3QB  
tel: 020 7490 7704

office@timronalds.co.uk

Royal Central School of  
Speech & Drama - Phase 5

Buckland Crescent, Swiss Cottage

East facade details

Scale [at A1]	Drawn	Checked
1:5, 1:10	MW	AG

CSD 229 A