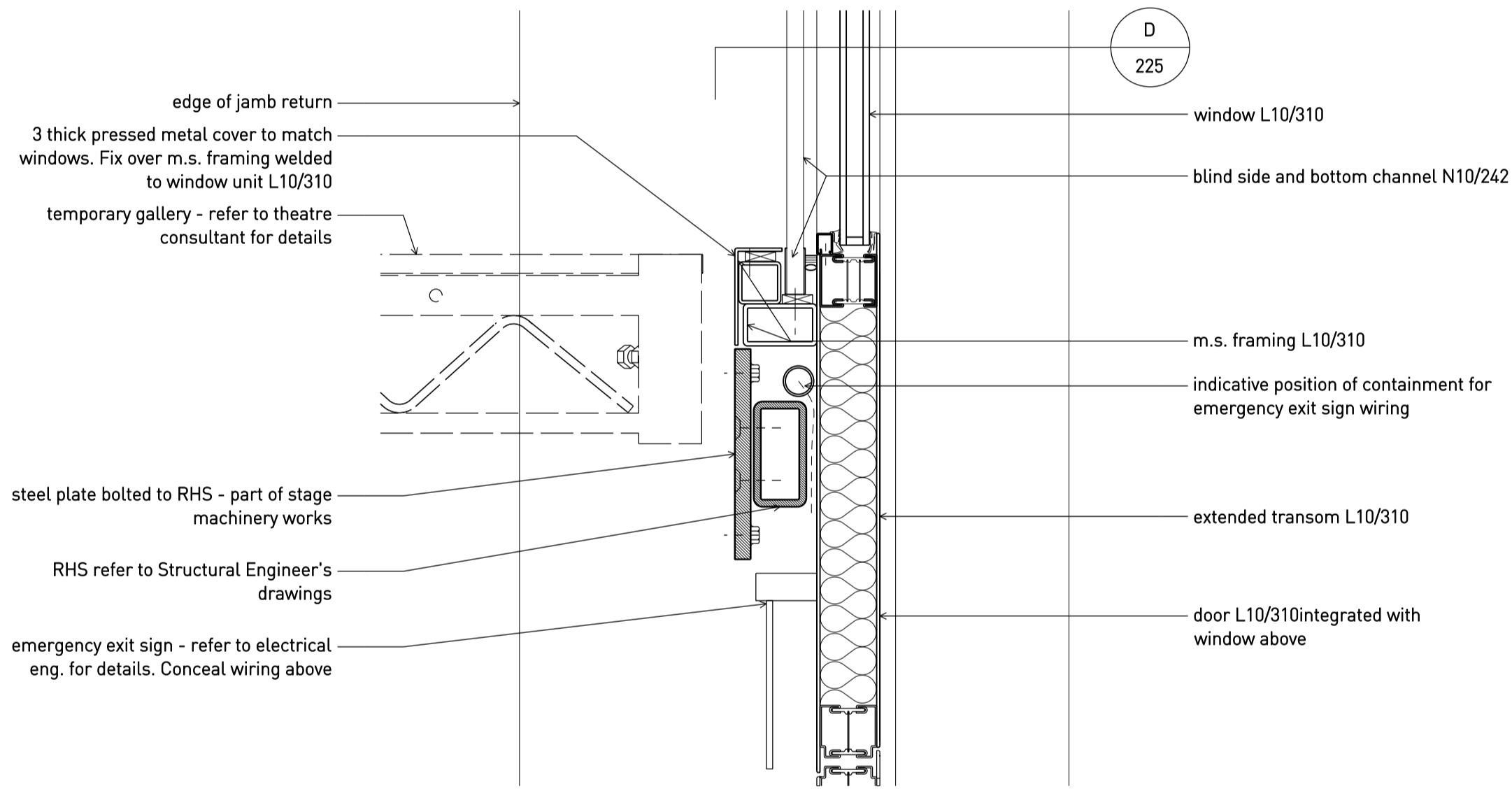
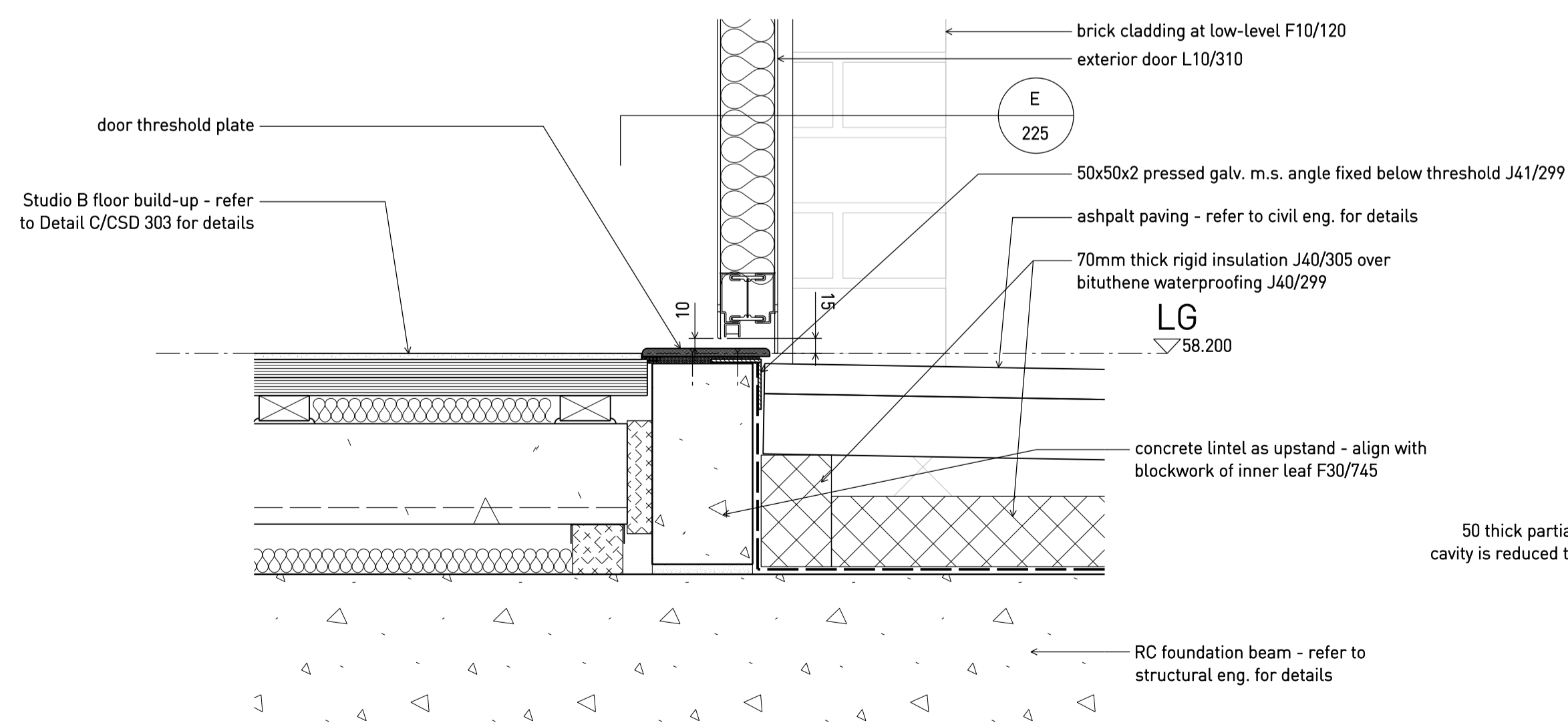


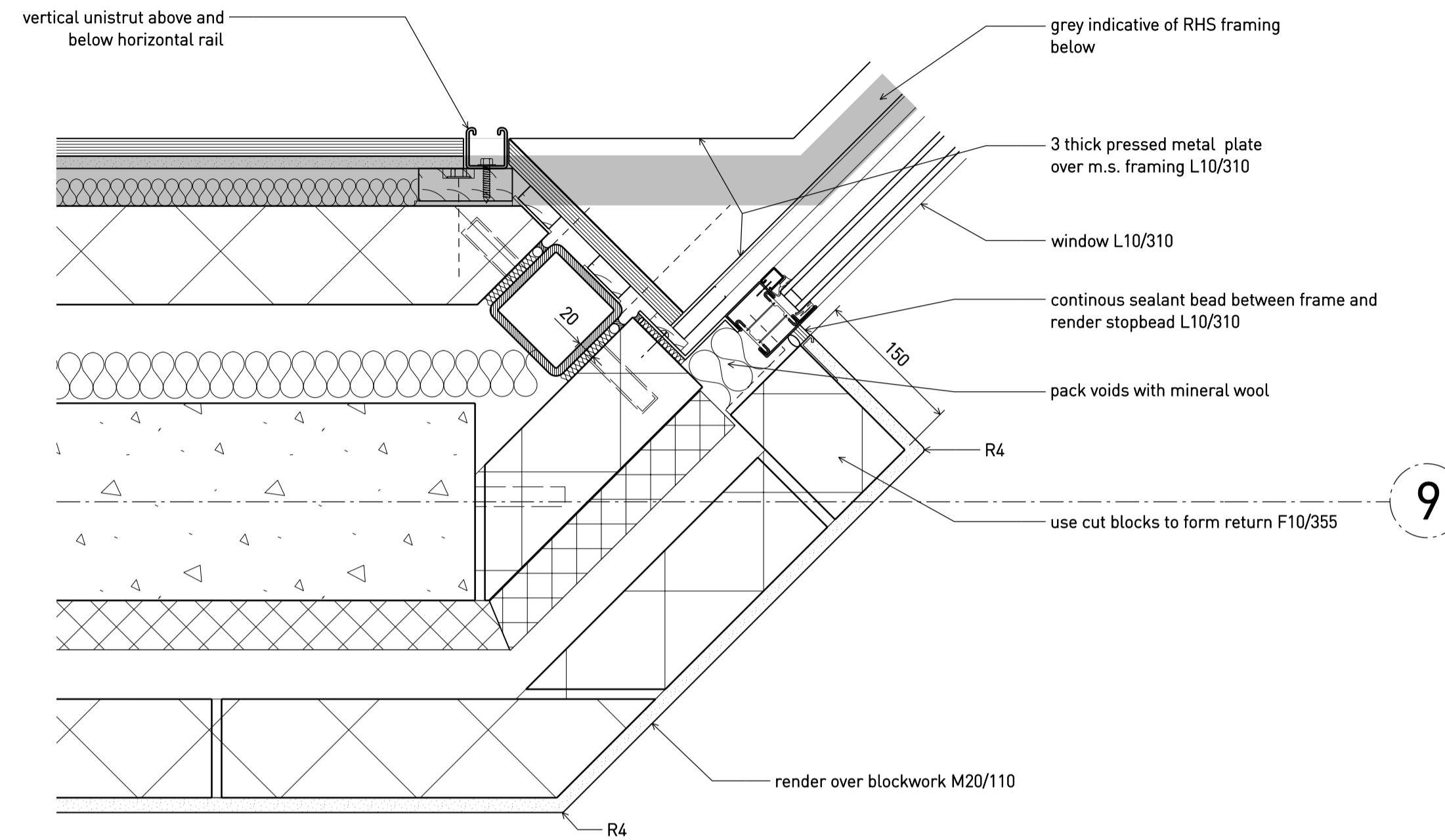
A Studio B window head - sec. detail 1:5



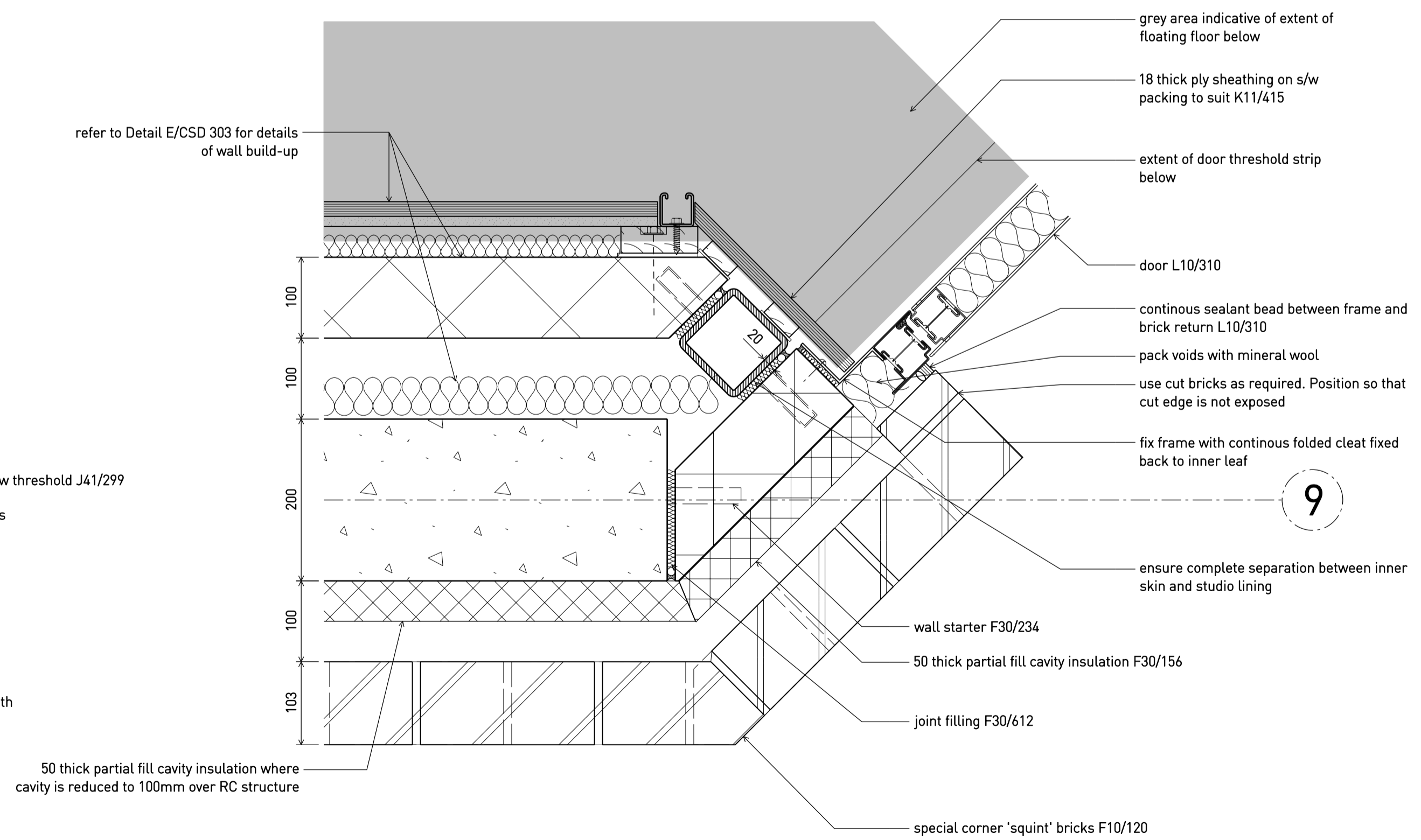
B Studio B window-door transom - sec. detail 1:5



C Studio B ext. door threshold - sec. detail 1:5



D Studio B transom - plan detail 1:5



E Studio B door jamb - plan detail 1:5

A	2.10.15	Issued for TENDER
*	27.08.15	Billing issue
Rev	Date	Status/Notes

Tim Ronalds Architects

108 Weston Street . London SE1 3QB
tel: 020 7490 7704
office@timronalds.co.uk

Royal Central School of
Speech & Drama - Phase 5
Buckland Crescent, Swiss Cottage
Studio B window and door
details

Scale (at A1)	Drawn	Checked
1:5	MW	AG

CSD 225 A