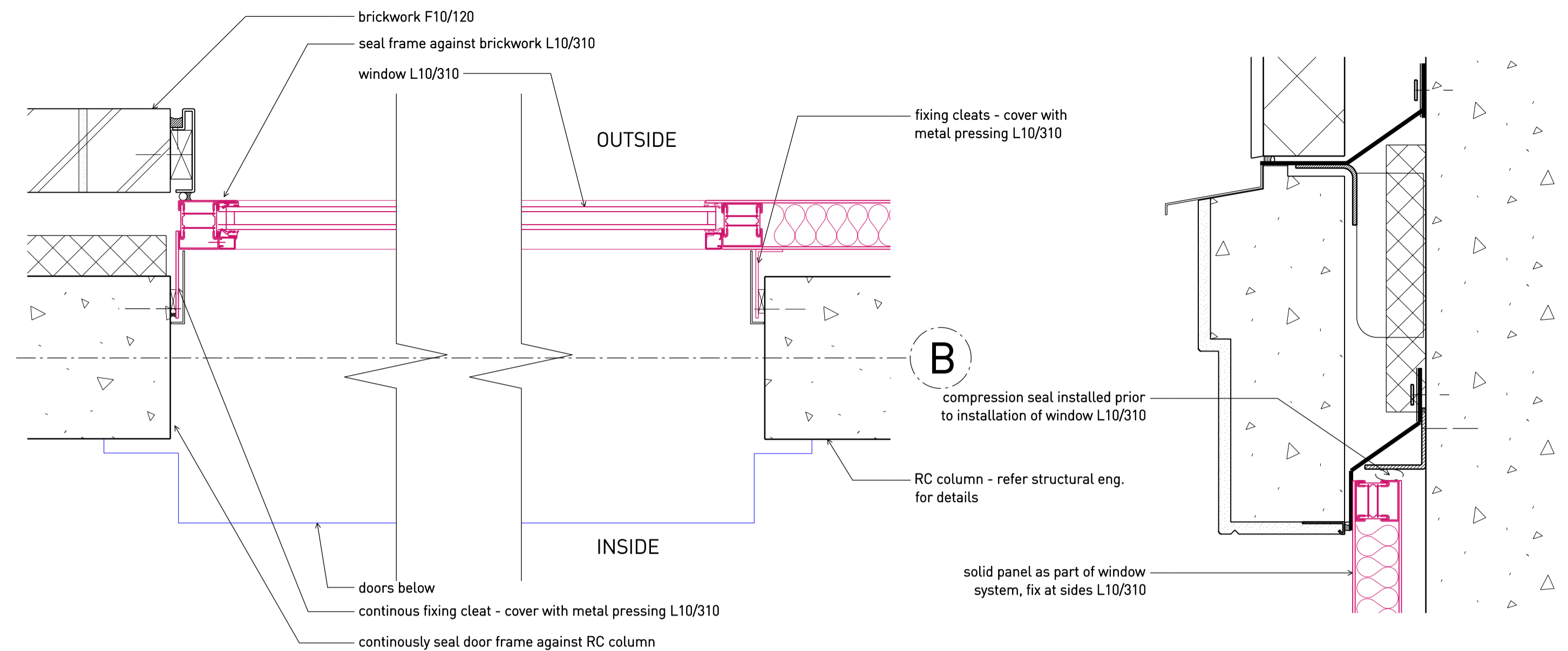
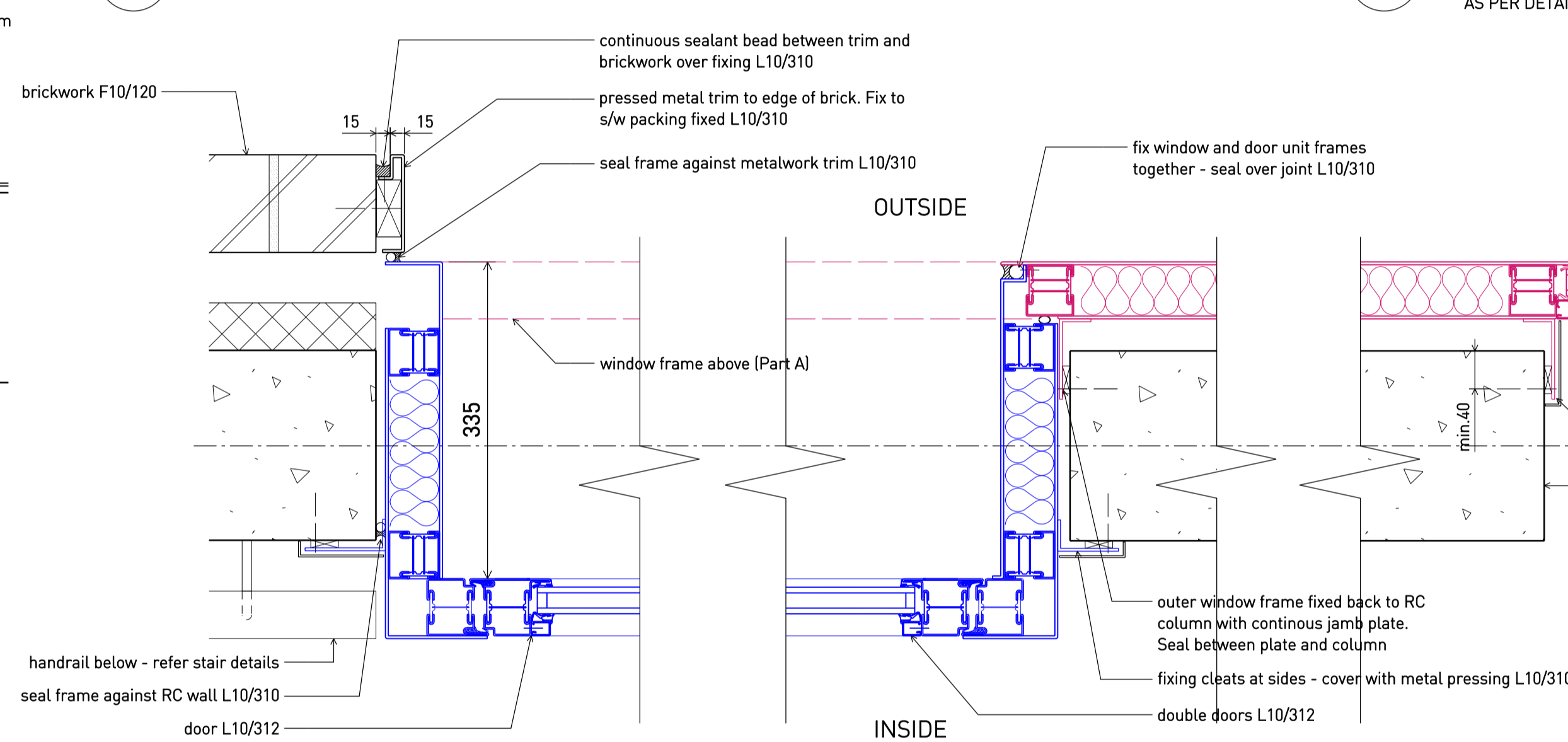


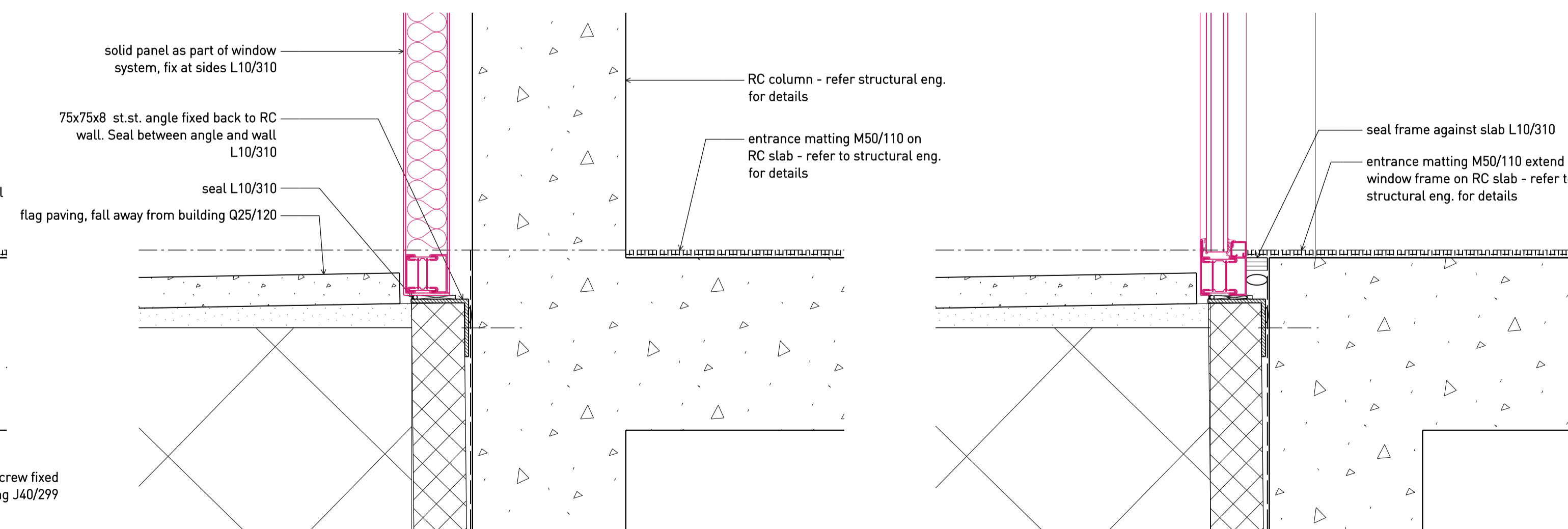
A College Cres. exit glazing - sec. detail through door
1:5 at A1



B College Cres. exit glazing - plan. detail high level 1:5

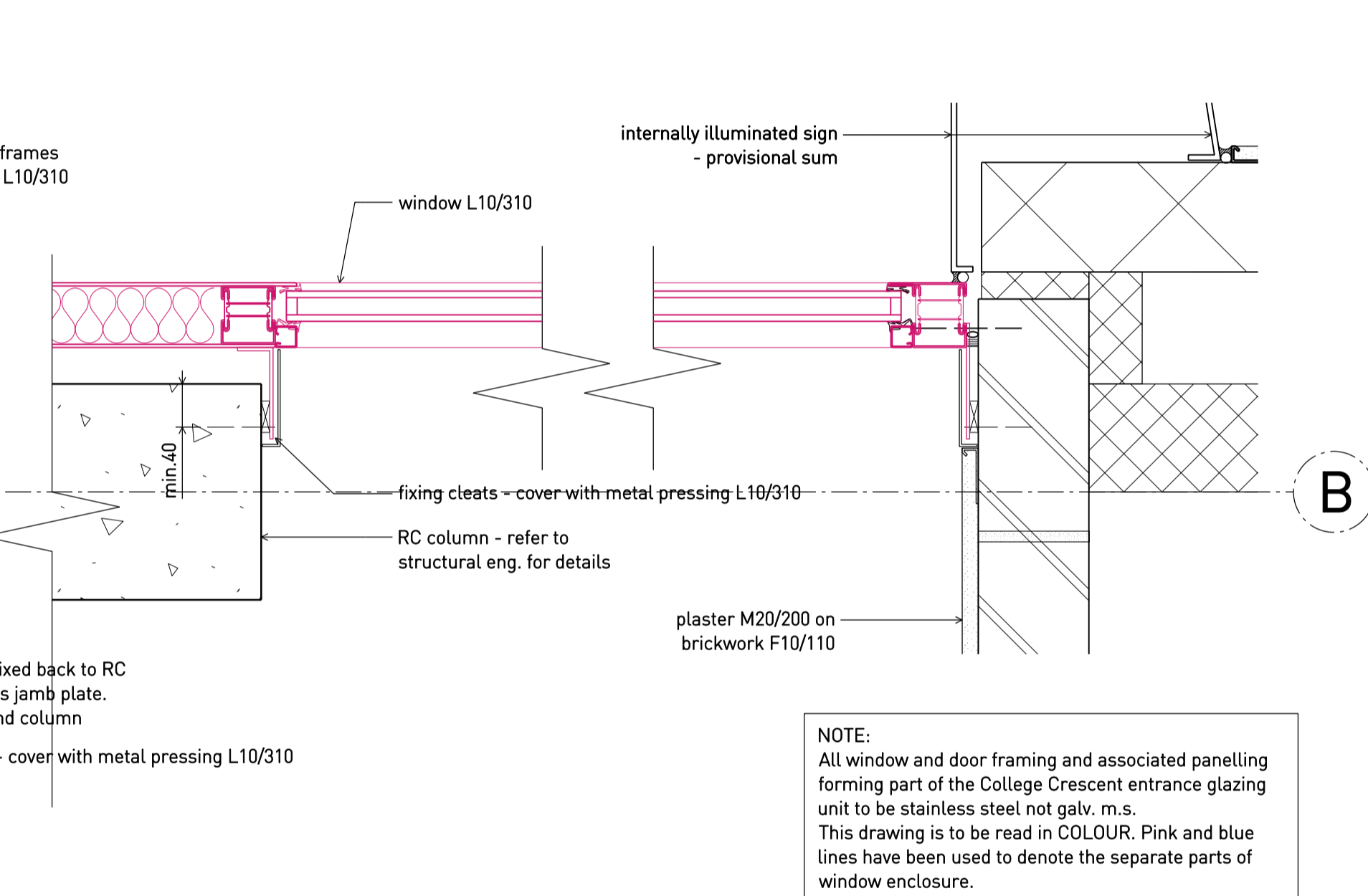


C College Cres. exit glazing - plan. detail through door 1:5



D College Cres. exit glazing cill - sec. detail through RC structure 1:5

F College Cres. exit glazing head - sec. detail through RC structure 1:5
AS PER DETAIL A/CSD 223 UNLESS OTHERWISE NOTED



NOTE:
All window and door framing and associated panelling forming part of the College Crescent entrance glazing unit to be stainless steel not galv. m.s.
This drawing is to be read in COLOUR. Pink and blue lines have been used to denote the separate parts of window enclosure.

A 2.10.15 Issued for TENDER
* 27.08.15 Billing issue
Rev Date Status/Notes

Tim Ronalds Architects
108 Weston Street . London SE1 3QB
tel: 020 7490 7704
office@timronalds.co.uk

Royal Central School of
Speech & Drama - Phase 5
Buckland Crescent, Swiss Cottage
College Cres. entrance
glazing details

Scale (at A1) 1:5
Drawn MW
Checked AG

E College Cres. exit glazing cill - sec. detail 1:5
AS PER DETAIL D/CSD 223 UNLESS OTHERWISE NOTED

CSD 223 A