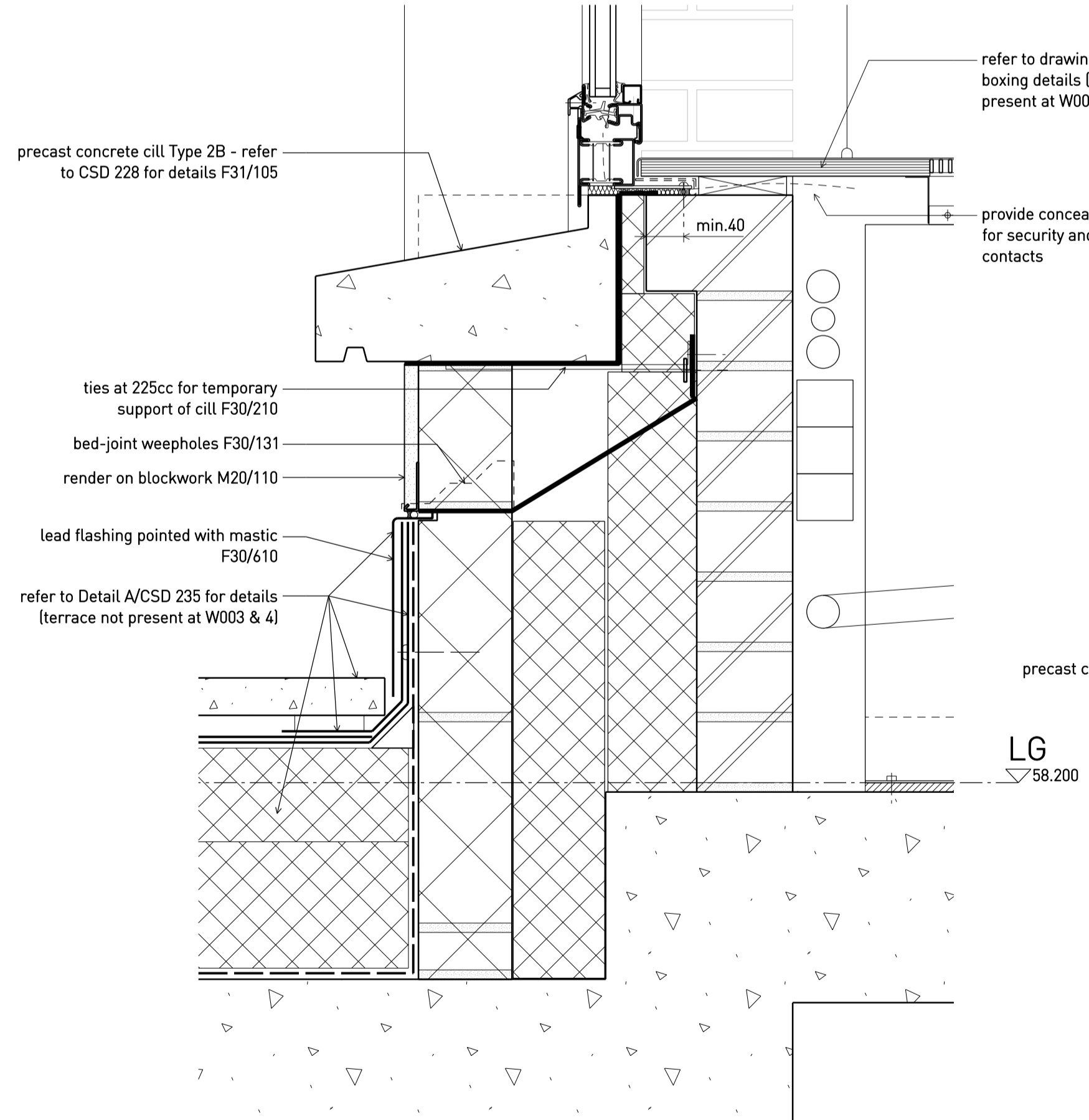


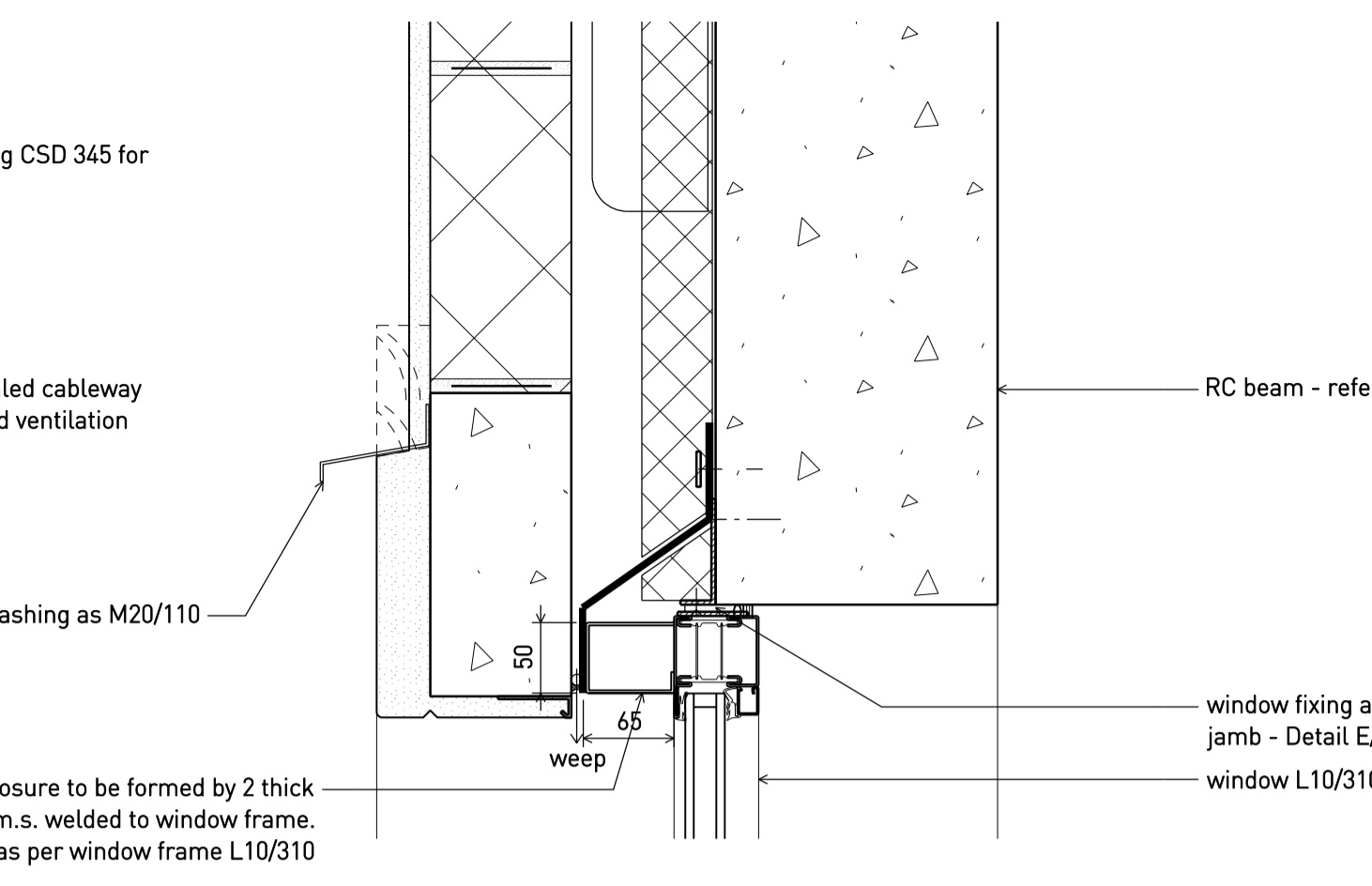
**C Stair window head sec. detail 1:5**  
AS PER CSD 221, DETAIL E UNLESS OTHERWISE NOTED

**A Typical window sec. detail - L1 1:5**  
AS PER CSD 221, DETAIL A UNLESS OTHERWISE NOTED

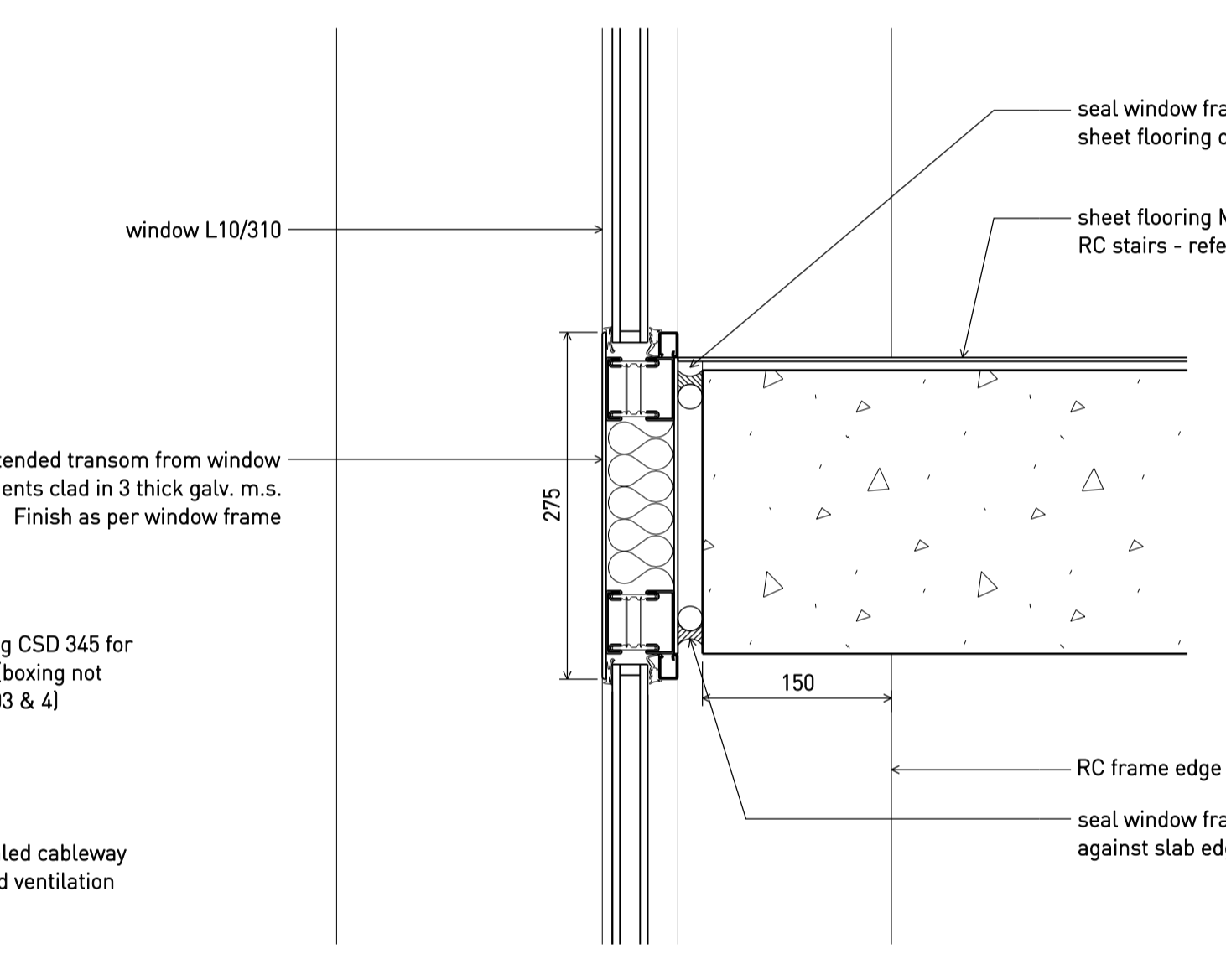


**D Stair window transom sec. detail 1:5**

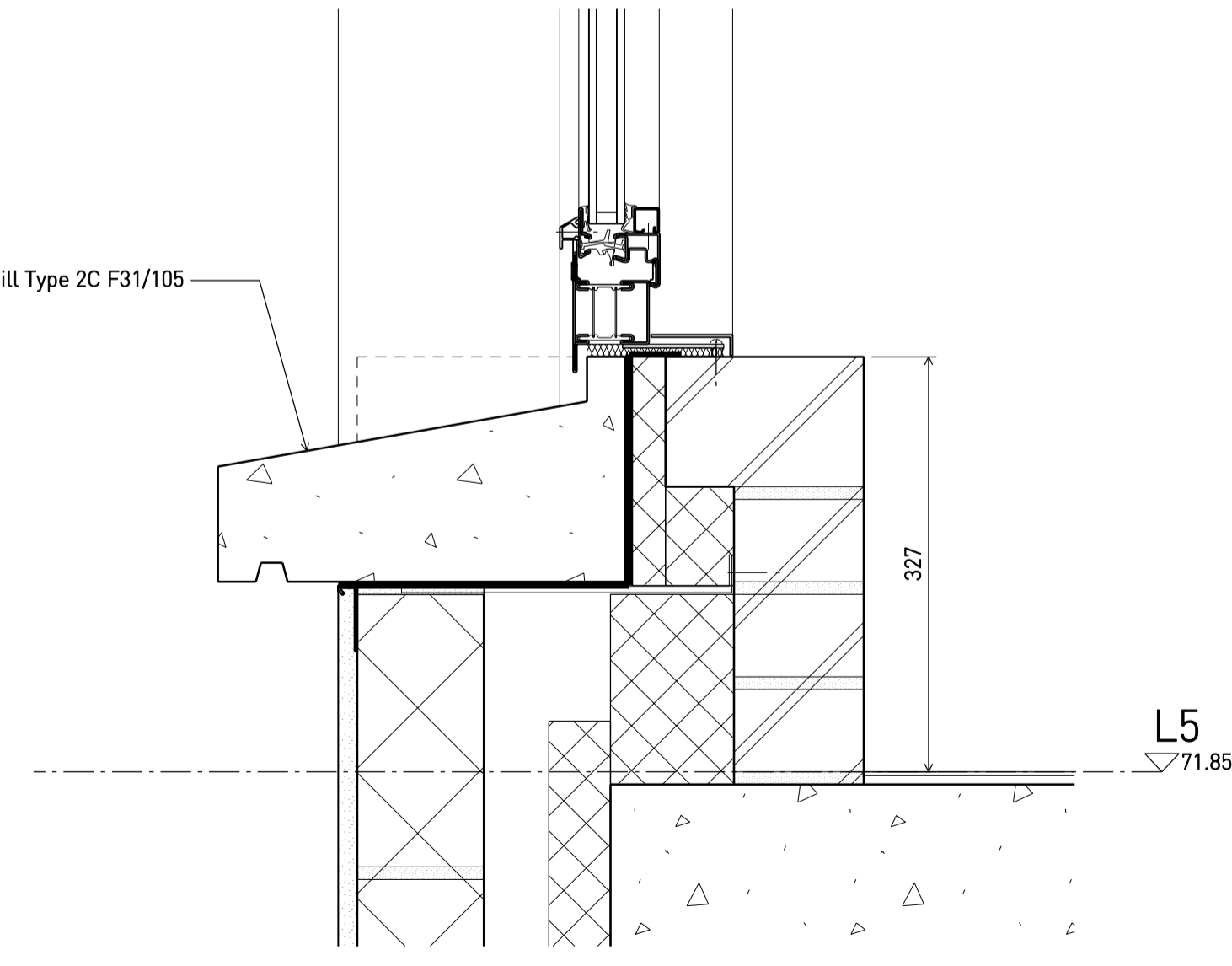
**B Typical window sec. detail - LG 1:5**  
AS PER CSD 221, DETAIL A UNLESS OTHERWISE NOTED



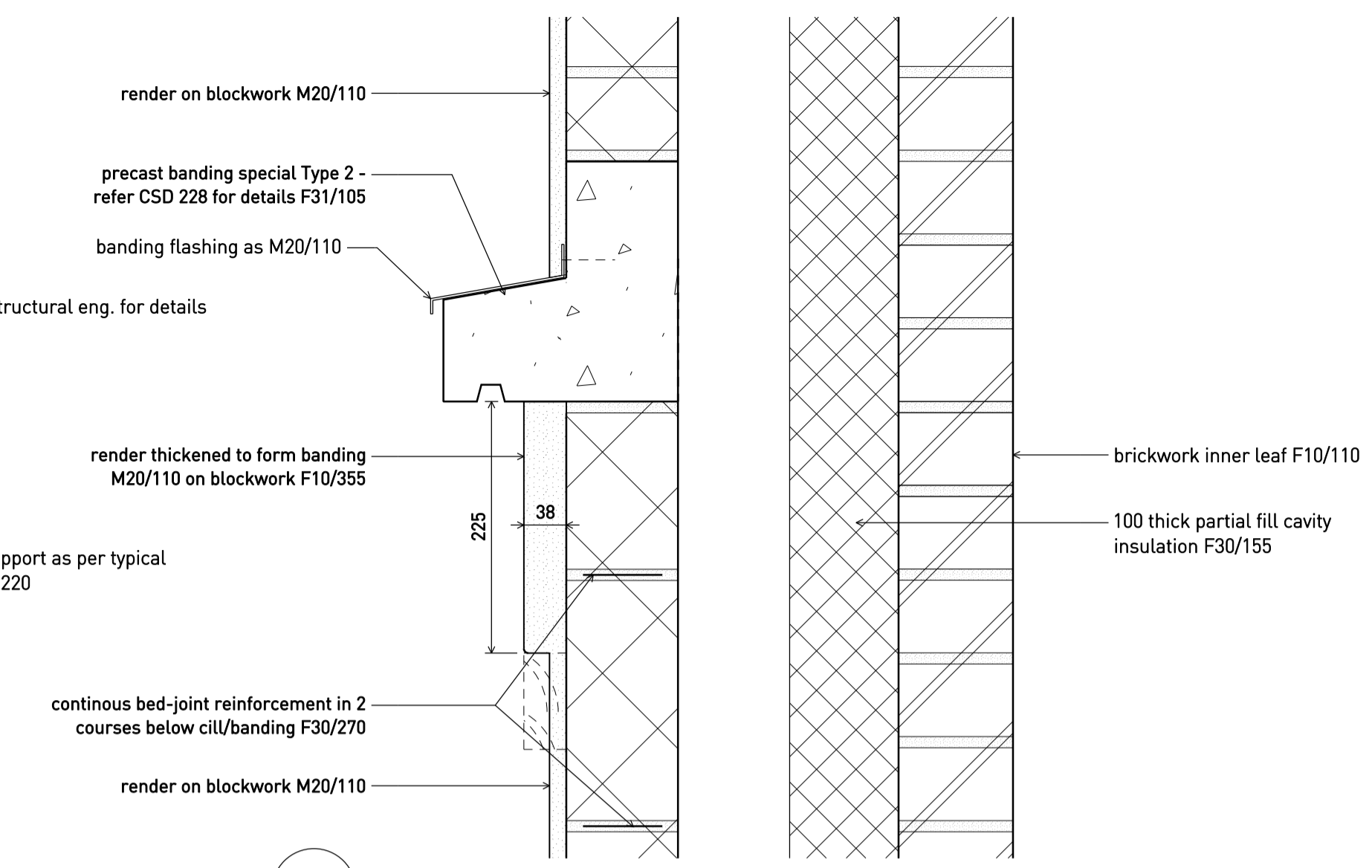
**C Stair window head sec. detail 1:5**  
AS PER CSD 221, DETAIL E UNLESS OTHERWISE NOTED



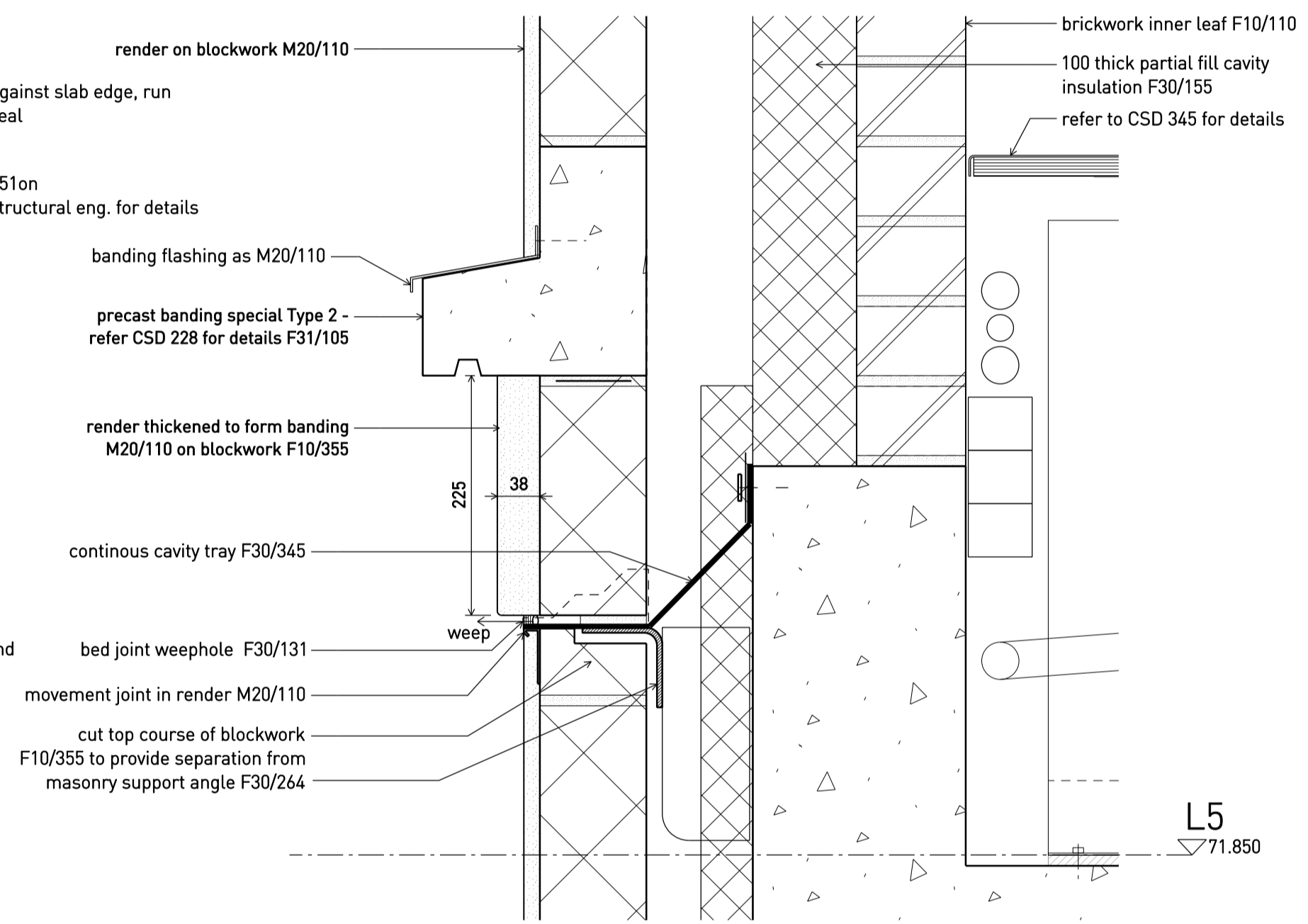
**D Stair window transom sec. detail 1:5**



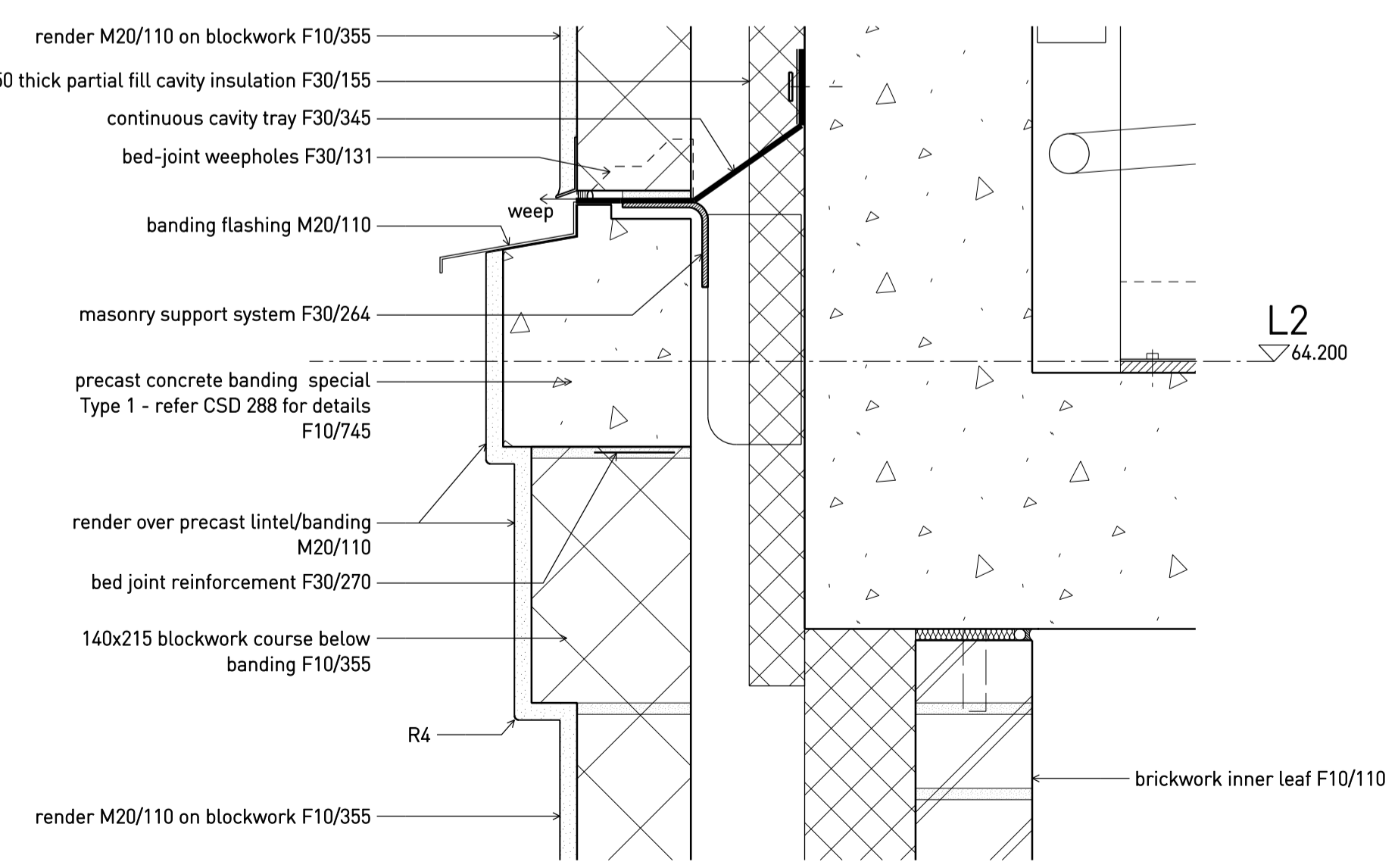
**E Changing room window cill sec. detail 1:5**  
AS PER CSD 221, DETAIL D UNLESS OTHERWISE NOTED



**F L6 wall banding sec. detail 1:5**  
READ IN CONJUNCTION WITH DETAIL D/CSD221



**G L5 wall banding sec. detail 1:5**  
READ IN CONJUNCTION WITH DETAIL C/CSD221



**H L2 wall banding sec. detail 1:5**  
READ IN CONJUNCTION WITH DETAIL A/CSD221

A	2.10.15	Issued for TENDER
•	26.08.15	Billing issue
Rev	Date	Status/Notes

**Tim Ronalds Architects**  
108 Weston Street . London SE1 3QB  
tel: 020 7490 7704  
office@timronalds.co.uk

Royal Central School of  
Speech & Drama - Phase 5  
Buckland Crescent, Swiss Cottage  
North facade ext. window &  
wall banding - sec. details

Scale (at A1)	Drawn	Checked
1:5	MW	AG

**CSD 222 A**