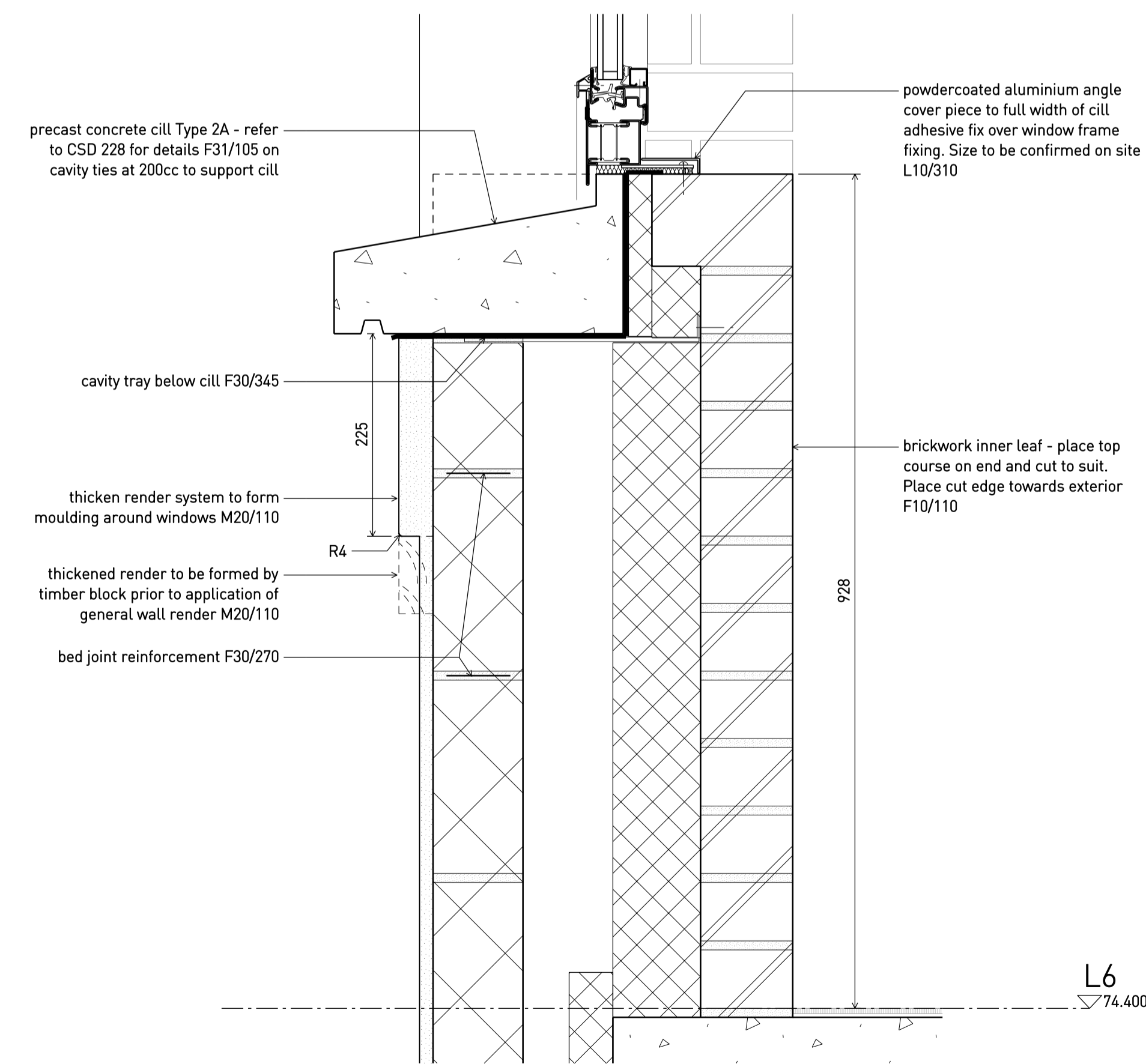
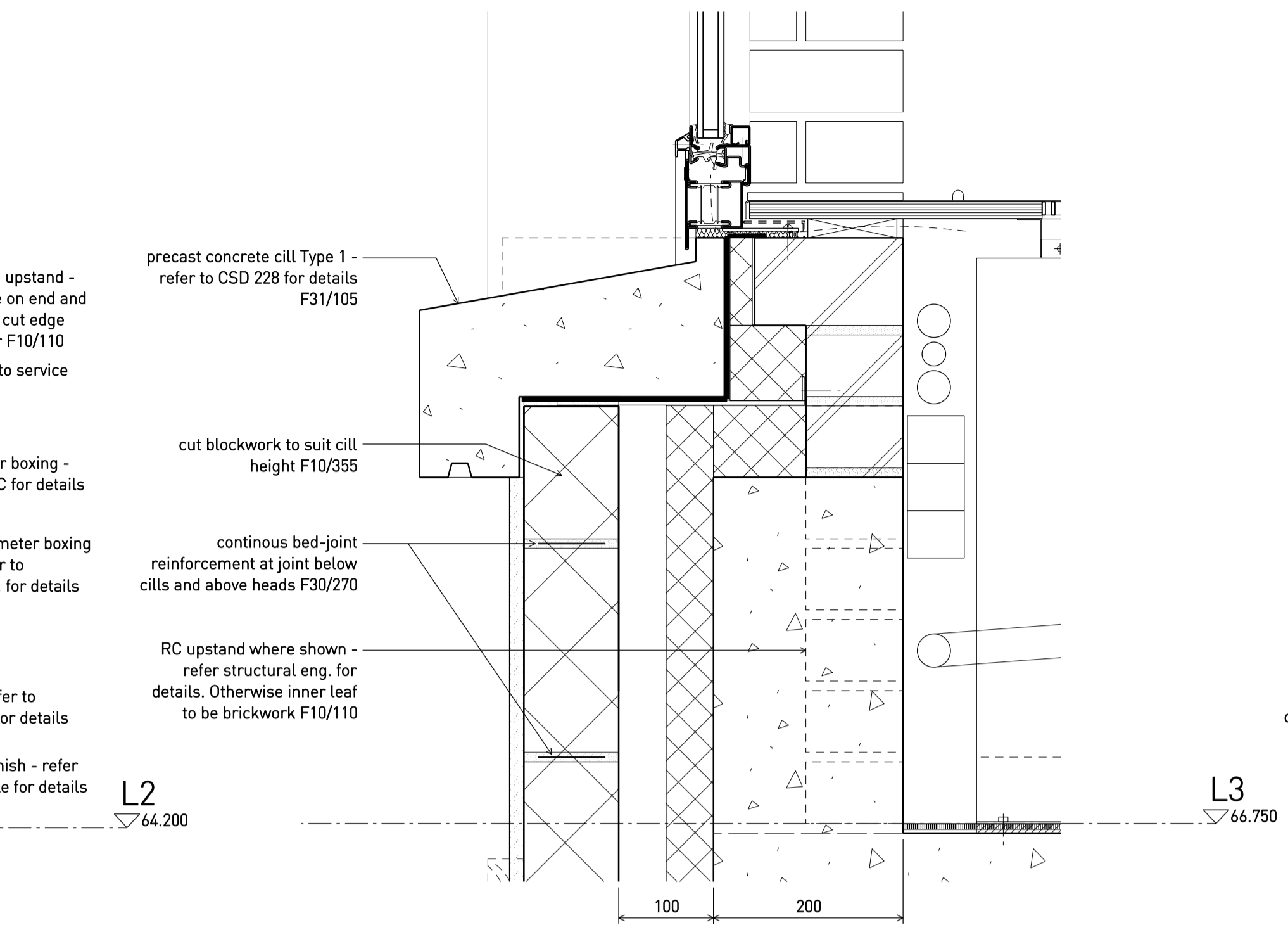


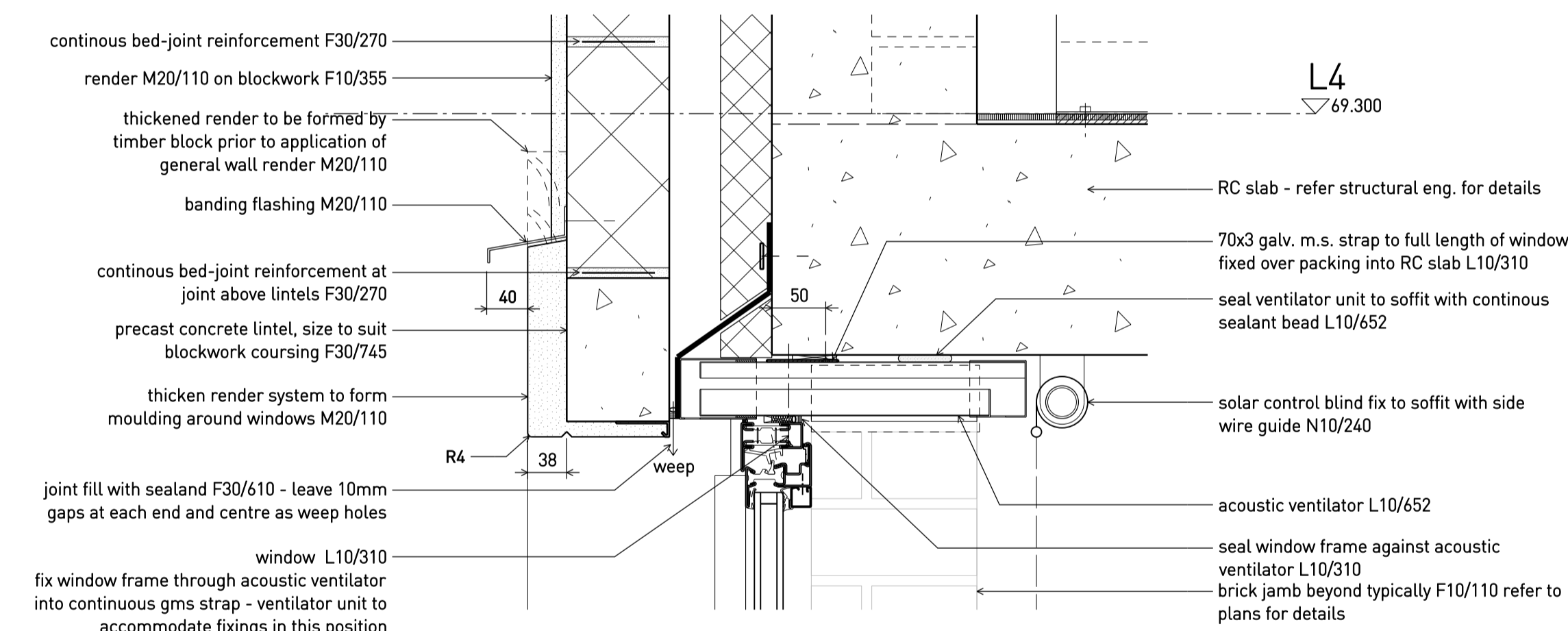
**A** Typical window sec. detail - L2 1:5



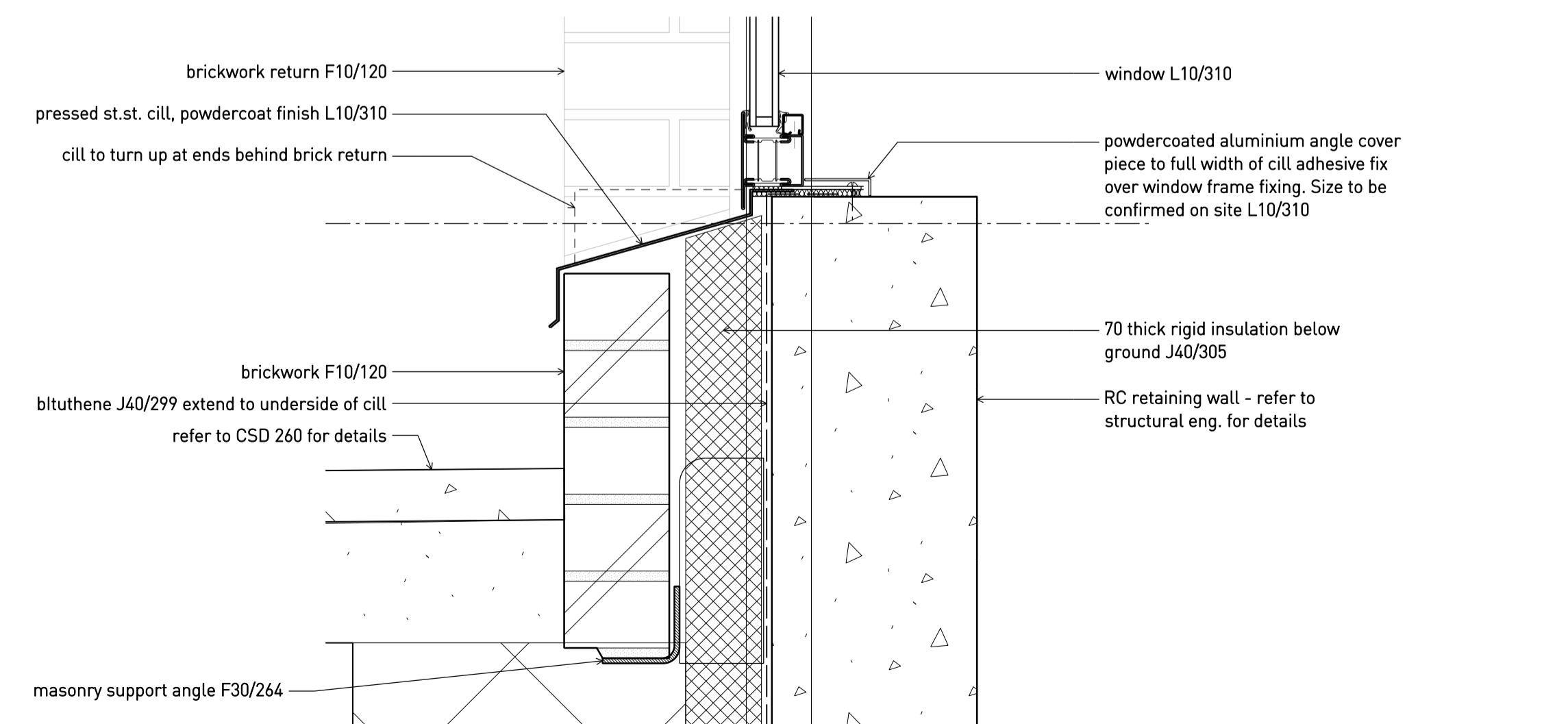
**D** Typical window cill sec. detail - L6 1:5  
AS PER CSD 221, DETAIL A UNLESS OTHERWISE NOTED



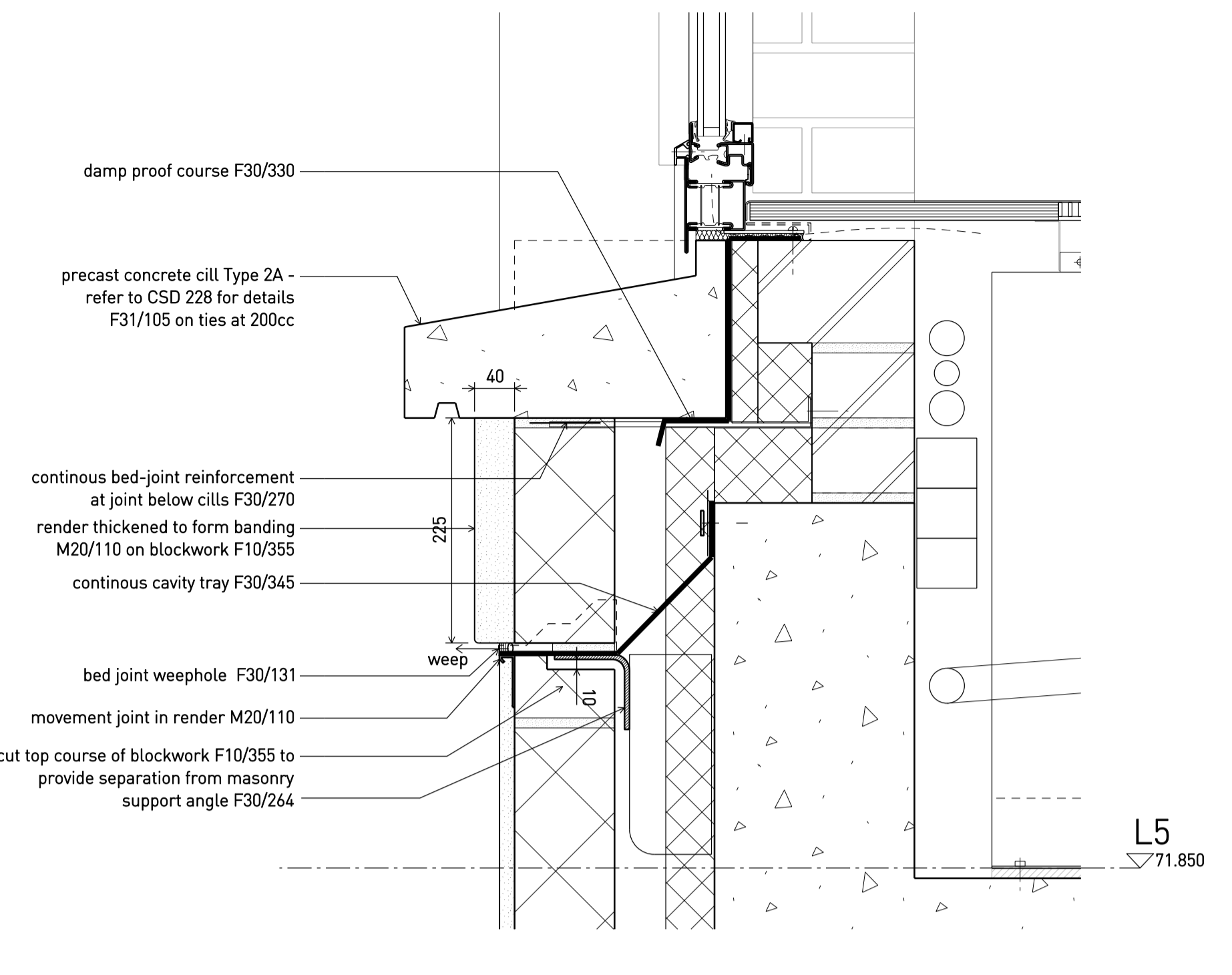
**B** Typical window cill sec. detail - L3 & L4 1:5  
AS PER CSD 221, DETAIL A UNLESS OTHERWISE NOTED



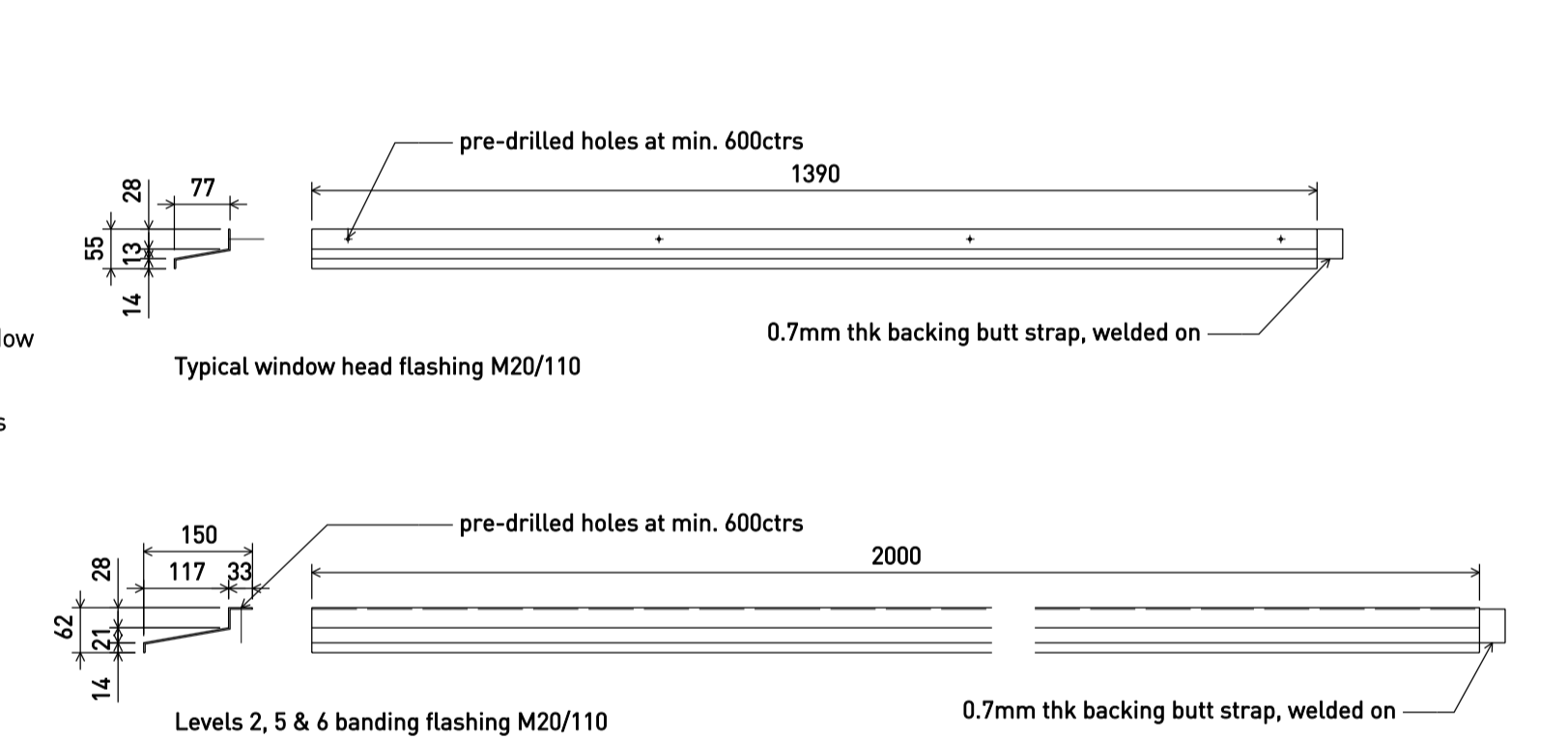
**E** Typical window sec. detail - L3, L4 & L5 (L1 & L6 similar) 1:5



**F** College Cres. street level window cill - sec. detail 1:5



**C** Typical window cill sec. detail - L5 1:5  
AS PER CSD 221, DETAIL A UNLESS OTHERWISE NOTED



**G** Flashing components 1:10

B	2.10.15	Issued for TENDER
A	04.09.15	Billing issue 4
*	07.08.15	Billing issue 1
Rev	Date	Status/Notes

**Tim Ronalds Architects**  
108 Weston Street . London SE1 3QB  
tel: 020 7490 7704  
office@timronalds.co.uk

Royal Central School of  
Speech & Drama - Phase 5  
Buckland Crescent, Swiss Cottage  
Typical ext. window -  
section details

Scale (at A1)	Drawn	Checked
1:5	MW	AG

**CSD 221 B**