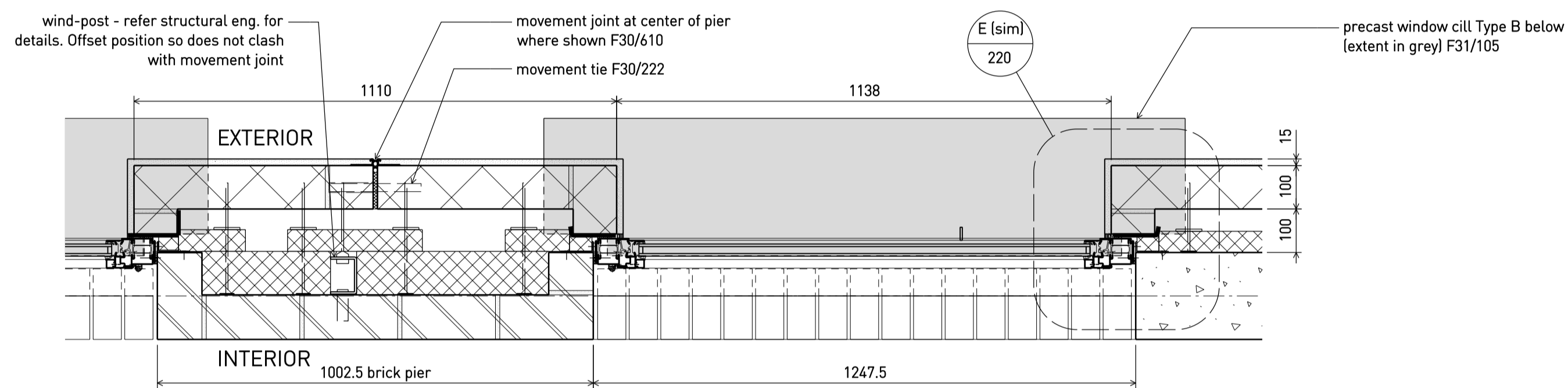
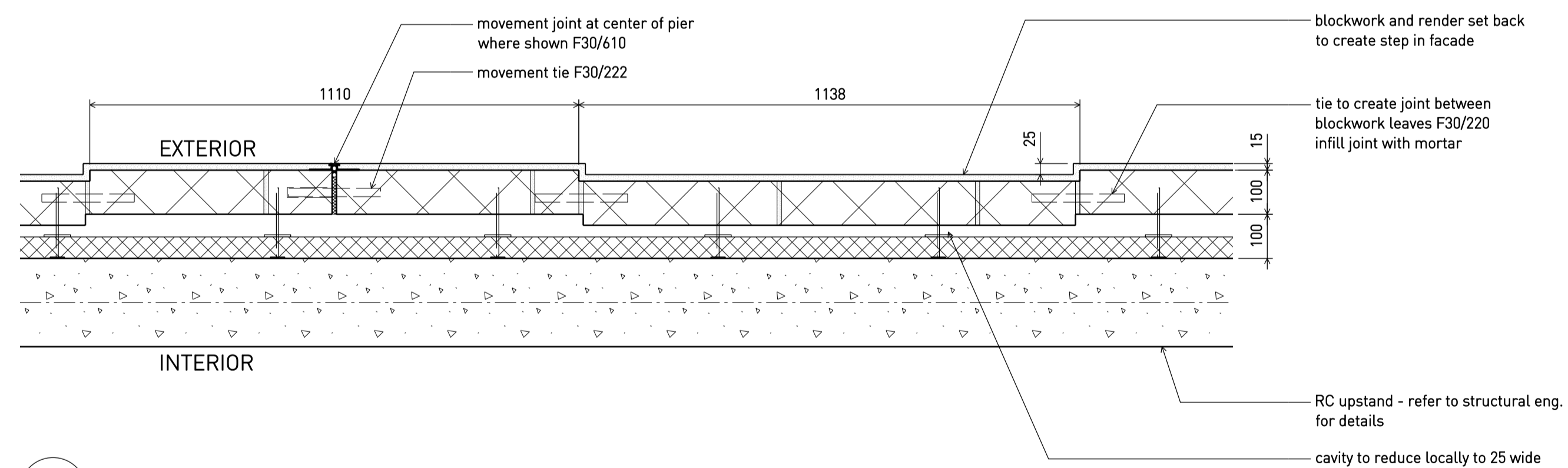


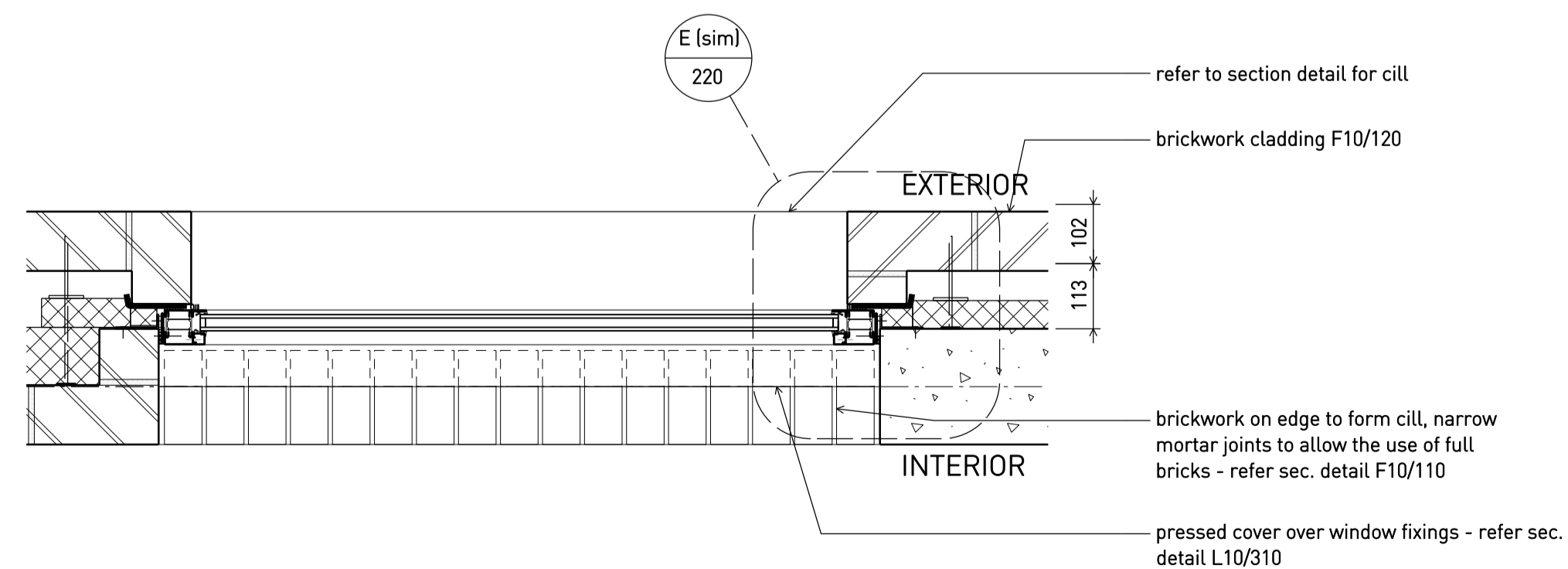
**A** Typical L2-L6 standard window - plan detail 1:10



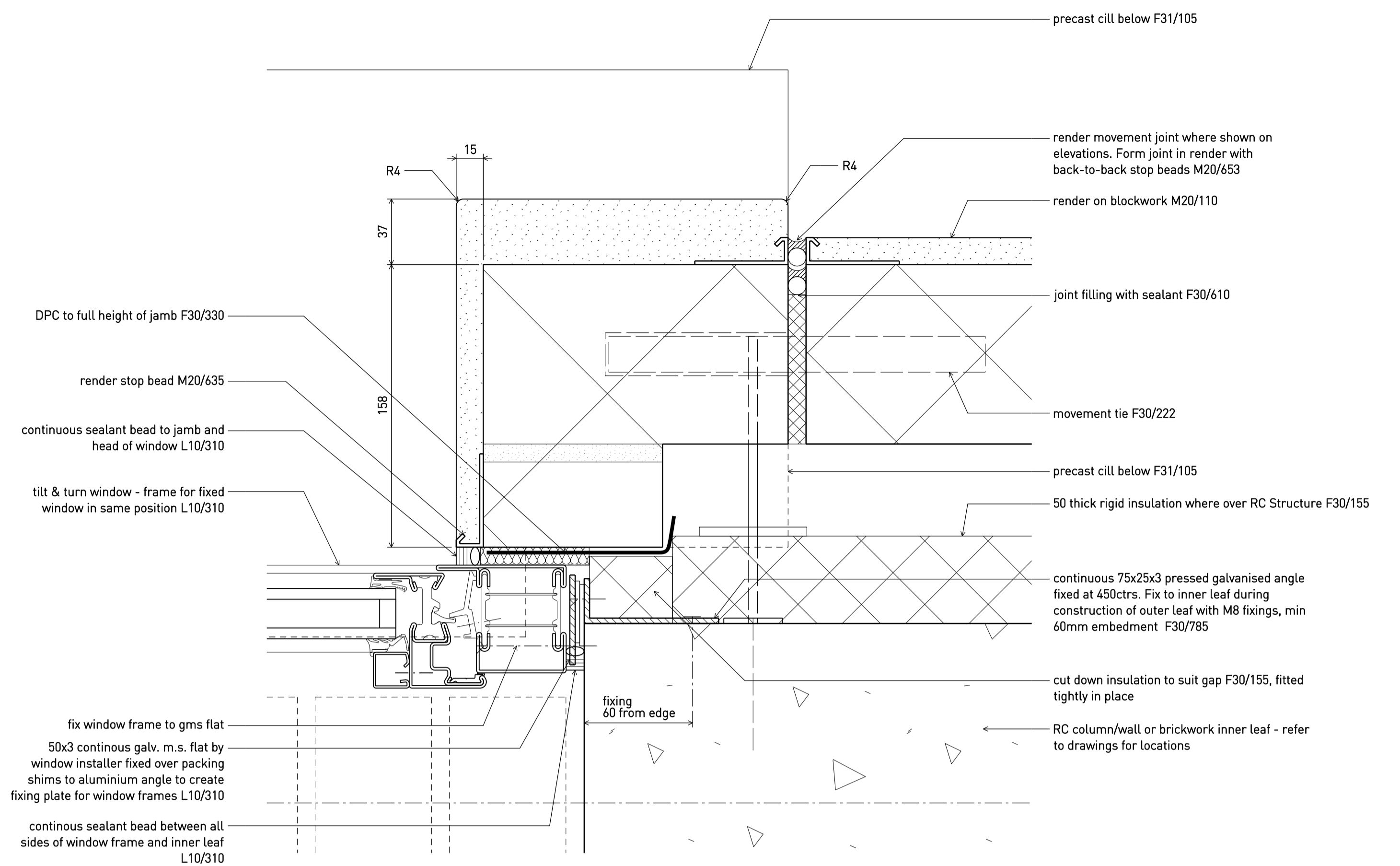
**B** Typical LG-1 standard window - plan detail 1:10  
As per Detail A/CSD 220 unless otherwise shown



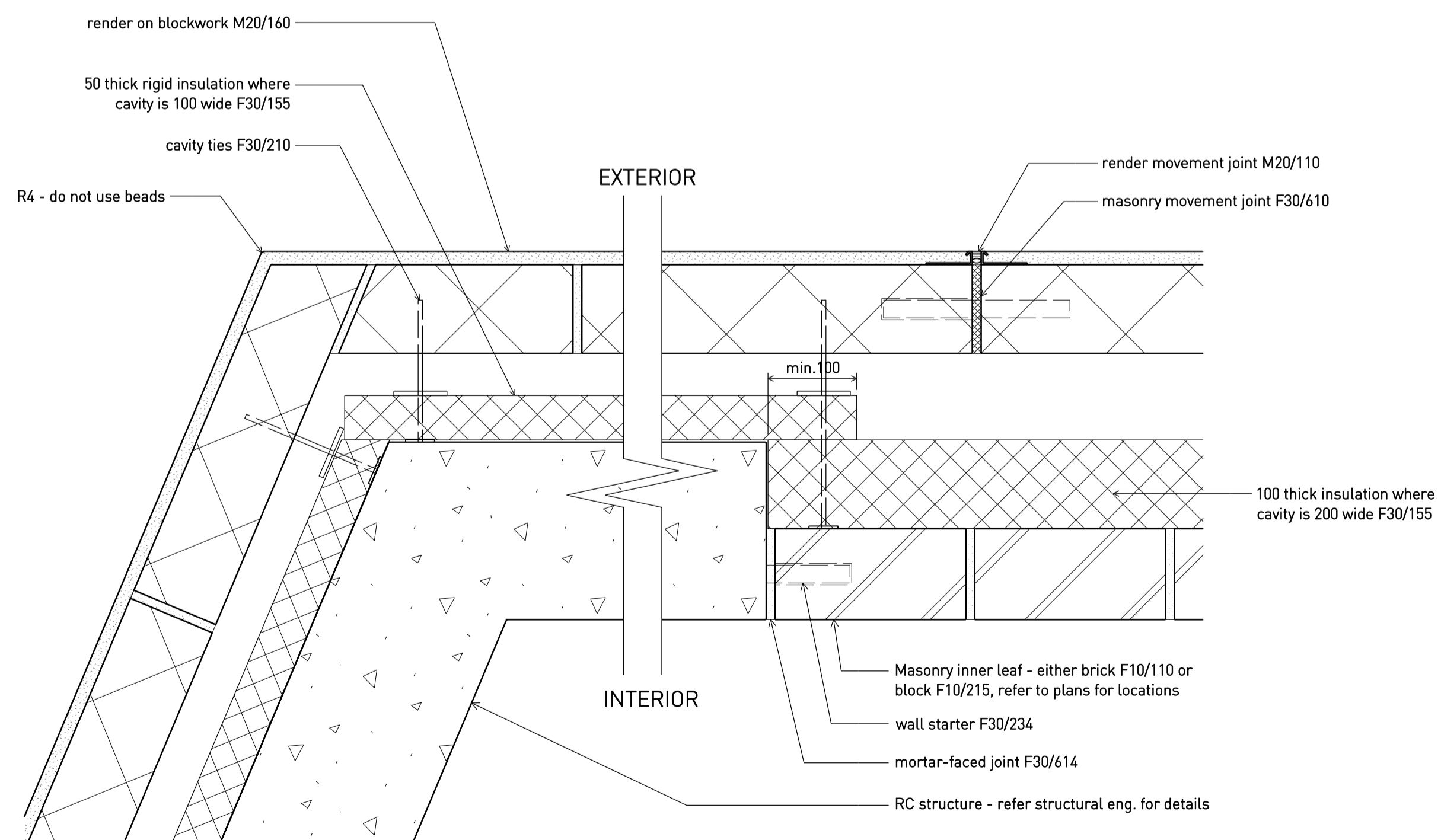
**C** Typical banding between LG-1 windows - plan detail (low-level) 1:10  
As per Detail A/CSD 220 unless otherwise shown



**D** Typical West Elevation street level windows - plan detail 1:10  
As per Detail A/CSD 220 unless otherwise shown



**E** Typical window jamb detail (operable; fixed similar) 1:2 (NB HALF SCALE)  
1:2 at A1



**F** Typical ext. wall build-up with movement joint - plan detail 1:5

B	2.10.15	Issued for TENDER
A	04.09.15	Billing issue 4
*	07.08.15	Billing issue 1
Rev	Date	Status/Notes

**Tim Ronalds Architects**  
108 Weston Street . London SE1 3QB  
tel: 020 7490 7704  
office@timronalds.co.uk

Royal Central School of  
Speech & Drama - Phase 5  
Buckland Crescent, Swiss Cottage  
Typical ext. window & facade -  
plan details

Scale (at A1)	Drawn	Checked
1:2 1:5, 1:10	MW	AG

**CSD 220 B**