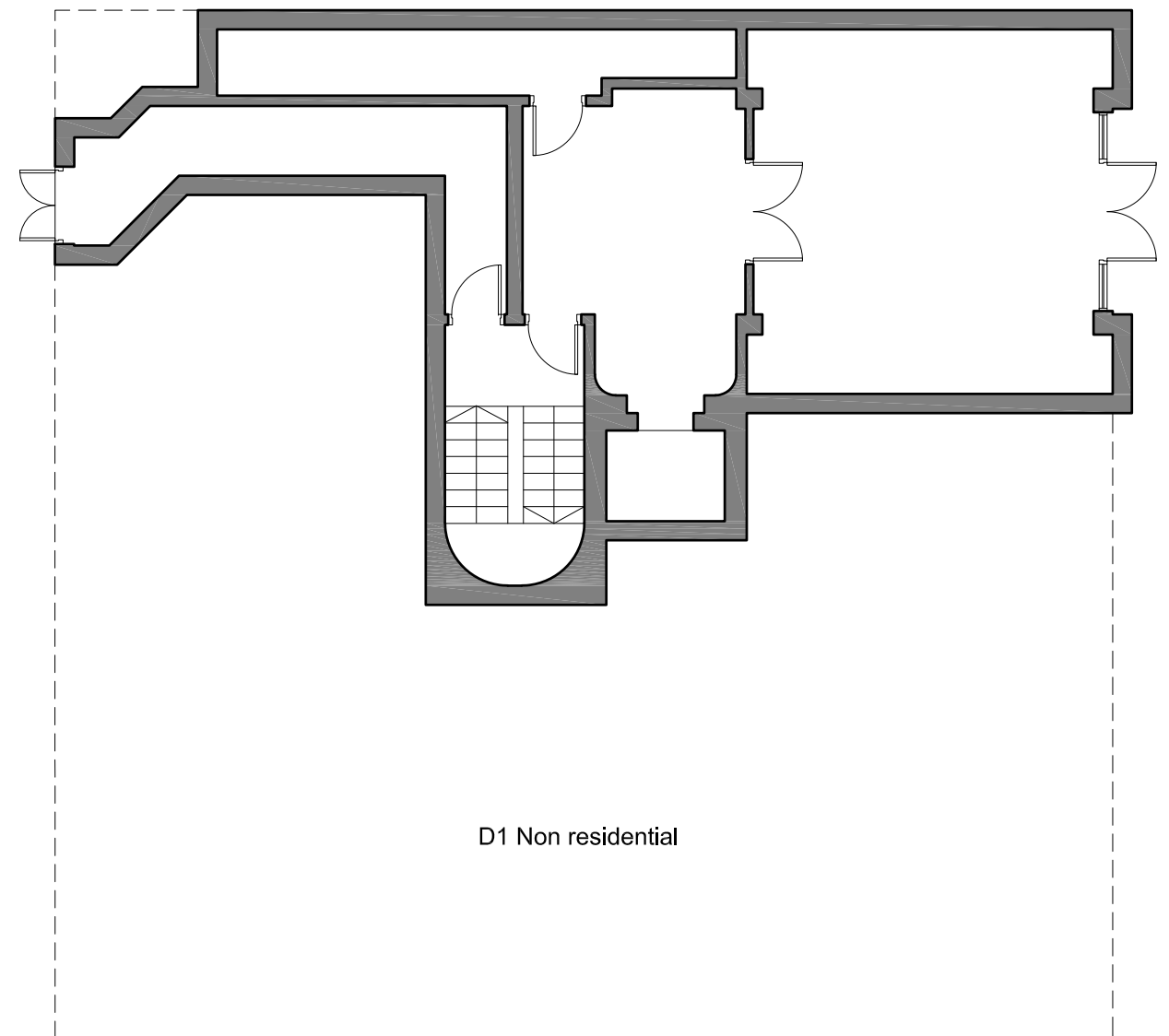


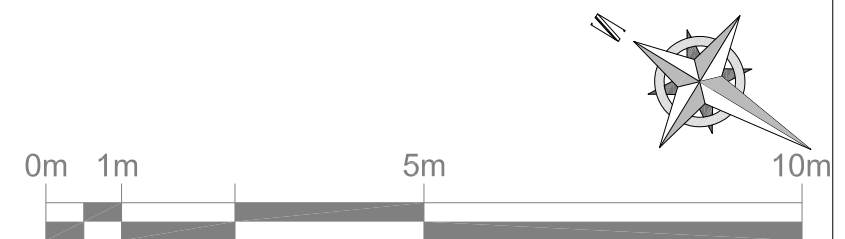
D1 Non residential

1 PROPOSED LOWER GROUND FLOOR PLAN
17_103 SCALE 1: 100 @ A3



D1 Non residential

1 PROPOSED GROUND FLOOR PLAN
17_103 SCALE 1: 100 @ A3



OFFICE B,
WEST GAINSBOROUGH,
1 POOLE STREET,
LONDON, N1 5EA
T. 020 7739 1650
F. 020 7793 0731
E. mail@idmproperties.com
W. idmproperties.com

Project:
No.40 Museum Street, London,
WC1

This drawing is the property of IDM Developments London Limited.
Copyright is reserved. The drawing is issued on the condition that it is not
copied, reproduced, retained or disclosed to any unauthorised person, either
wholly or in part.

Rev:	Description:	Date:

Drawing Title:
Proposed Lower Ground and Ground
Floor Plan

Scale:
1:100

Date:
2017/06/30

Frame Size:
A3

Drawing Ref:
17_103-209

CAD Ref:

Revision:
*

Client: